

Expertise

Protocol number: 45864831
Order No. / Reference: 26362308
Inspection date: 3 Jun 2026

Manufacturer: Audi

Model: A6 Avant 55 TFSI e quattro S tronic sport

VIN: WAUZZZF29PN045992



Vehicle details

Manufacturer / Type / Model / Equipment

Audi A6 Avant 55 TFSI e quattro S tronic sport

Vehicle Identification number WAUZZZF29PN045992

Mileage (Read) 125,110 km

First registration 23 Feb 2023

Number of holders 1

Power / Engine displacement 195 kw / 1,984 ccm

Fuel type / Cylinder Hybr.B/E ext.auf / 4

Gearbox / Number of gears Automatic / 7

Type of drive All-wheel drive

Type of vehicle Station wagon

Colour / colour code Daytonagrau Perleffekt

Doors / Seats 5 / 5

Upholstery type Cloth / leather combination

Colour of upholstery Grey

readiness to drive Roadworthy



Vehicle details			
Maintenance booklet / proof	digital proof / complete	Next maintenance in	21,900 km
Last service on / at	02/2026 at 117,964 km		
Key is / should be	2 / 2	FZG documents	ZB#2 (B) was available (copy), ZB#1 (S) was not available.
		Letter No.	GS401759
Previous damage / Accident	Detectable	Repainting	Detectable
Inspection conditions	sufficient	Lifting equipment / pit	No
Test drive	Not performed	Engine function test	Performed
readiness to drive	Roadworthy		
Manufacturer key number/ type code number	0588 / BZF 00532		
Emission standard	EURO6;WLTP;AP;PI/CI; M, N1 I	fine dust sticker	
Permitted total weight	2,675 kg	Empty weight	

Tyres

Mounted tyres				
#	Tyre size	Type of tyre	Manufacturer	Tread depth
1)	225/55 R18 102V	Winter tyres on Light alloy	Pirelli	4mm / 4mm
2)	225/55 R18 102V	Winter tyres on Light alloy	Pirelli	5mm / 5mm
Additional tyres				
#	Tyre size	Type of tyre	Manufacturer	Tread depth
1)	245/45 R19 102Y	Summer tyres on Light alloy	Bridgestone	3mm / 3mm
2)	245/45 R19 102Y	Summer tyres on Light alloy	Bridgestone	2mm / 2mm
Replacement				
Typ	Tyre size	Type of tyre	Manufacturer	Tread depth
	Tirefit	Expiration date 02/2028		

Legend: Tread depth information for the left tire is listed first, for the right tire it is listed second on the axle in the direction of travel.

TÜV SÜD Auto Partner GmbH
Wiesenring 2
04159 Leipzig

Inspection location
Hartmann Fleet Professionals GmbH
Leerenstraße 25
29683 Bad Fallingbommel



Equipment



Standard equipment

- Airbag for driver and front passenger (full-size airbag, with front passenger airbag deactivation)
- Acoustic vehicle warning system (generating a warning tone to increase traffic safety for pedestrians and cyclists)
- "quattro" all-wheel drive with ultra technology (permanently available all-wheel drive with actively controlled torque distribution, ultra technology and wheel-selective torque control. The system includes an electronically controlled all-wheel drive coupling, a friction clutch integrated into the rear axle differential and an electronic differential lock (EDS) for all driven wheels. The ultra technology allows for a reduction in drag losses in the all-wheel drive system by opening both couplings.)
- Audi connect Emergency Call & Service m.connect Remote & Control (TFSI e) (The Audi connect Emergency Call & Service services ensure a safe feeling on every journey. - Emergency call - Online breakdown call - Audi damage service - Audi service appointment online Audi connect Remote & Control: - Vehicle status and vehicle data - Remote locking/unlocking - Parking position - Remote charging - Remote climate control - Push notification anti-theft alarm system)
- Audi pre sense basic (In critical driving situations such as emergency and dangerous braking or situations at the limits of driving dynamics, Audi pre sense basic initiates preventive protection measures. These include: tightening the front and outer rear seat belts, optimizing the seating position, initiating the closing process of the windows and the panoramic glass roof (if ordered as an option), and high-frequency activation of the hazard warning lights to warn other road users.)
- Electrically adjustable and heated exterior mirrors (with integrated LED indicator lights, including heated windshield washer nozzles, aspherical mirror glass)
- Decorative inlay in dark matt brushed aluminum (for dashboard, door panels and center console; including aluminum-look trim)
- Door sills with aluminum inlay, front and rear, illuminated
- Electronic Stability Control (ESC)
- Driver information system with color display (7-inch color display; display content: speed (digital speedometer), time, mileage, outside temperature, fuel warning with remaining range, gear shift recommendation, current radio station or music track, radio and media lists, telephone menu, navigation information and driver assistance system alerts (if available), on-board computer; the integrated efficiency program supports the driver with consumption data overviews and fuel-saving tips for more economical driving, break recommendation)
- Electrically opening and closing tailgate (The tailgate can be opened electrically by pressing the button on the vehicle key, in the driver's door, or the soft-touch button on the tailgate handle. To close the tailgate: simply press the button on the inside of the tailgate, the button in the driver's door, or the button on the vehicle key. A6 Avant: Opening the tailgate in low-ceiling areas is made easier by a programmable opening angle.)
- Airbag: Front side airbags and head airbag system (front side airbags integrated into the seatbacks - with additional head airbag system: deploys in front of the side window area and thus protects the front and outer rear passengers in the event of a side impact)
- Anti-lock braking system (ABS)
- Audi connect Navigation & Infotainment in conjunction with MMI Navigation plus with MMI Touch response (Online Points of Interest, Online Traffic Information plus Hazard Information, Weather Information, Access to Calendar, myAudi Navigation, Wi-Fi Hotspot, Online News, On-Street Parking, Navigation with Google Earth, Online Search for Navigation Destinations, Online Voice Input, Amazon Alexa Integration, Highly Detailed 3D City Display, Online Radio, Hybrid Radio)
- Audi drive select (adjustment of vehicle characteristics in the available modes auto, comfort, dynamic, efficiency, allroad, offroad, individual by adjusting steering assistance, engine characteristics or shift characteristics, dynamic all-wheel steering, damper control, adaptive air suspension, sport differential, ultra technology, adaptive speed assistant, Matrix LED headlights and setting of other optional equipment.)
- Audi pre sense front (Within system limits, it can warn of impending collisions depending on the situation and speed and initiate appropriate braking. The system is active from approximately 5 km/h. Pedestrians and cyclists can be detected at speeds up to approximately 85 km/h and vehicles at speeds up to 250 km/h: If an impending frontal collision is detected, the system warns the driver visually, audibly, and haptically in a multi-stage process.)
- Exterior mirror housings in black
- Brake calipers, painted red
- Fabric headliner
- Tachometer
- e-tron compact charging system (designed for charging at wall sockets, a so-called Mode 2 charging system. It consists of a control unit including a vehicle connection cable and two different mains connection cables (with household and industrial plugs). - Manual switching between 100% and 50% charging power - LEDs indicate the status of the charging system and the charging process. - Charging power at your vehicle up to 7.4 kW.)
- Chassis: Sport chassis (with firmer spring and damping for more direct road contact and sportier handling, lowered by 20 mm compared to standard chassis, shock absorbers and coil springs on front and rear axles)
- Remote key (locks and unlocks the doors, luggage compartment and fuel filler flap. Driving authorization is granted without actively using the key (keyless go). The driver must be in the vehicle and have the key with them. The engine is started and stopped via the engine start/stop button in the center console.)



- Transmission: S tronic 7-speed
- Interior lighting (front and rear roof module, including reading lights (capacitively switched), illuminated vanity mirrors for driver and front passenger, entry lights on the underside of the front doors, front/rear door controls, front storage compartment, glove compartment, front/rear footwell lighting, right/left trunk lighting)
- 4-zone automatic climate control (separate temperature control for front passenger/front passenger, rear compartment climate control via air outlets in the rear center console, defroster vents for windshield/side windows, combined pollutant/fine dust filter, temperature setting and air distribution in the rear left/right, controlled air outlets in the B-pillar, rear climate control unit with touchscreen, efficient climate zone control possible via occupant detection, automatic recirculation mode and sun-position-dependent control, dust and odor-removing allergen filter, residual heat utilization, personalization)
- Steering wheel: Sport contour leather steering wheel in 3-spoke design, multifunction plus with shift paddles, flattened at the bottom (shift paddles allow manual changing of the driving modes.)
- Steering column, manually adjustable in height and axis
- Front center armrest (adjustable in tilt, movable in length)
- Otto particulate filter
- Non-smoking package (no ashtray in the front center console, one 12-volt socket each in the front and rear)
- Black Optics Package (adds black accents to the exterior in the area of the Audi Singleframe grille, the trim strips on the side windows, and the front and rear bumpers. Design varies depending on the model and equipment.)
- Pedals and footrest in stainless steel
- Progressive steering (increases driving dynamics and driving comfort through more direct steering response (e.g. on winding country roads or when turning) and reduced steering effort (e.g. when parking and maneuvering); driving characteristics through a steering ratio dependent on the steering angle and speed-dependent steering assistance; various modes, adjustable via Audi drive select)
- Radio accessories: Audi sound system (10 speakers including center speaker and subwoofer - 6-channel amplifier - total output of 180 watts)
- Rail system with fixing set (loading floor in the luggage compartment with one rail each on the left and right - with four variable lashing eyes which can be variably positioned in the rail system - with tension strap on the right for fixing objects and a net on the left - with two hooks on the right and left)
- Seat covers in Alcantara Frequency/leather combination with S embossing (for front sports seats: - center section of the front seats and the two outer rear seats in Alcantara Frequency - side bolsters, headrests, middle rear seat and front center armrest in black or rotor grey leather with contrasting stitching - with S embossing in the backrests of the front seats)
- Cruise control including speed limiter (The cruise control maintains the desired speed from 20 to 250 km/h by adjusting engine power or by actively applying the brakes, provided engine and braking performance allow. It is operated via a separate steering column stalk, including a display of the set speed in the driver information system. The speed limiter helps to prevent exceeding a preset maximum speed.)
- Interior mirror dimming
- ISOFIX and Top Tether child seat attachment for the outer rear seats (holding device for the practical attachment of ISOFIX child seats with an additional upper attachment point (Top Tether) on the outer rear seats)
- Headrests (4) (front ones manually height adjustable)
- AC Type 2 charging socket (charging access to the high-voltage battery via AX)
- Mode 3 charging cable (charging cable for charging at public AC charging stations (Type 2). The cable connects the charging station to the vehicle's AC charging port and enables a charging power of up to 7.4 kW at your vehicle.)
- LED headlights: Matrix LED headlights with dynamic turn signals (visually enhanced daytime running lights, low beam, high beam, position lights, turn signals, cornering lights, all-weather lights, motorway lights, synthetic cornering lights, automatic dynamic headlight range control, intersection lights, headlight cleaning system, LED taillights with dynamic turn signals)
- MMI Navigation plus with MMI touch response (10.1-inch color display, additional display of navigation maps and arrows in the driver information system, map updates, 3D map display, efficiency assistant, online traffic information, MMI search, MMI touch response for fast, intuitive operation, natural language interaction, detailed route information, input of up to 10 waypoints, entire portfolio of Audi connect Navigation & Infotainment, Audi virtual cockpit (12.3-inch color display), Audi sound system (10 speakers), Audi smartphone interface)
- Wheel: Alloy wheels, multi-spoke design, contrast grey, partially polished (8.5 J x 19 with tires 245/45 R 19)
- Wheel: Tire pressure monitoring system (visual and audible warning in case of pressure loss in one or more wheels - display in the driver information system)
- Wheel: Tire repair kit
- Radio: MMI Radio plus with MMI touch response (8-inch color display, driver information system with 7-inch TFT color display, Audi music interface; 2 USB-C ports with data and charging function, Bluetooth interface (hands-free calling and audio streaming) including voice control for telephone functions, separate MMI touch control unit with 8.6-inch color display for controlling climate control functions, passive speakers; 8 speakers, 120W AM/FM phase diversity, speed-dependent volume adjustment, DAB+)
- Seats: 4-way lumbar support (electrically adjustable, horizontally and vertically)



- Seats: Front sports seats (with manual adjustment of seat height, seat longitudinal position, seat tilt, backrest tilt, headrest height and distance and belt height with pronounced seat side bolsters for better lateral support in curves, extendable thigh support and electric 4-way lumbar support)
- Stationary climate control (The standard stationary climate control cools or heats the interior as needed before starting the journey, ensuring a very high level of climate comfort right from the moment you enter the vehicle. The stationary climate control can be programmed or activated in the MMI and can also be conveniently switched on via the smartphone app, regardless of whether the vehicle is charging at the time or not. A "short climate control" cycle can be started when unlocking the vehicle with the remote key.)
- Telephone: Audi smartphone interface (The Audi smartphone interface (Android Auto and Apple CarPlay) connects your smartphone to your Audi and seamlessly displays your smartphone content directly on the MMI display via USB. Navigation, telephony, music and selected third-party apps can be conveniently controlled via the MMI touchscreen as well as via voice control on your smartphone.)
- Central locking

Extra equipment

- Airbag: Front and rear side airbags including head airbag system (Side airbags in the rear, in addition to the front side airbags and the head airbag system, offer extra protection for rear passengers. Illuminated seatbelt buckles increase passenger comfort and enhance the interior with subtle, high-quality lighting.)
- Paint finish: Pearl effect
- Wheel: Winter alloy wheels, 5-arm design (8 J x 18 with tires 225/55 R 18)

- Seats: Split-folding rear seat backrest Avant (distinctive outer rear seats, visually adapted to the front seats, and an additional central seating option - 3 rear L-shaped headrests, manually height-adjustable - three 3-point seat belts - rear seat backrest split 40:20:40 or fully foldable - one-piece, foldable rear center armrest with storage compartment and cupholder - with removable partition net, to be attached to the body or to the folded-down rear seat backrest)
- Sun visor on driver and passenger side
- Lane Departure Warning (within system limits, helps prevent unintentional lane departures. If the system is activated and ready, and the driver has not used the turn signal, the Lane Departure Warning helps prevent crossing detected lane markings by making corrective steering interventions. Additional steering wheel vibration can be set at the driver's request. Operating range from approximately 60 to a maximum of 250 km/h)
- Start-stop system (helps reduce fuel consumption and CO2 emissions by switching off the engine during stationary phases, e.g. at traffic lights. For restarting, the starting process is initiated as soon as the foot brake is released. Can be deactivated at any time via a button.)
- Glazing: Front window in heat-insulating glazing (windshield in laminated safety glass)
- Glazing: Privacy glazing (tinted windows) (rear window, rear door and side windows tinted)
- Electronic immobilizer
- Heat-insulating glazing on the sides and rear (green tinted, heated rear window with timer)

- Business Package (Assistance Package Tour: Adaptive Driving Assistant supports the driver with acceleration, braking, maintaining speed and distance, and lane keeping. Adaptive Cruise Control, Speed Limiter. Efficiency Assistant supports the driver with predictive driving. Parking Aid Plus, 4-zone automatic climate control, heated front seats, Audi phone box, automatically dimming interior mirror, automatically dimming exterior mirrors, adaptive windscreen wipers with integrated washer nozzles, high-beam assistant)
- Steering wheel: Leather steering wheel in a 3-spoke design with multifunction plus and steering wheel heating (shift paddles allow manual changing of the driving modes. The steering wheel rim is also heated.)



Brief expert findings

Documents submitted	At the time of the inspection, the vehicle registration certificate Part 2 (title) was available, but the vehicle registration certificate Part 1 (document) was not. (Copy)
VIN comparison	The vehicle identification number (VIN) was read from the vehicle and its conformity with the submitted documents was confirmed by the undersigned during the inspection.
Inspection	The inspection conditions were sufficient for the assessment of the vehicle. No lifting equipment or pit was available for inspecting the vehicle. Therefore, inspection of the vehicle's underside was only possible to a limited extent.
Test drive	No test drive/shunting maneuver was carried out during the inspection of the vehicle.
Engine function test	An engine test run was performed.
readiness to drive	The vehicle was roadworthy at the time of inspection.

Value reducing factors

No.	Component group	Description
1	Trim / covers	Door trim - rear right side (Durch gelagerten Radsatz) - Deformed - Loss in value
2	2nd wheel set	1 alloy rim - Scratch(es) - Loss in value
3	Wheel / tyres	Alloy rim - rear left side - Scratch(es) - Loss in value
4	Side panel - rear left side	Side panel - Scratch(es) - Smart repair
5	Rear bumper	Rear bumper - Scratch(es) - Smart repair
6	Front bumper	Front bumper - Scratch(es) - Paint

Wear and tear

No.	Component group	Description
1	2nd wheel set	2 tyres (Über 2mm) - No deduction
2	Wheel / tyres	Tyre - front (Über 4mm) - No deduction
3	Side panel - rear left side	Side panel - dent(s) - No deduction
4	Vehicle glazing	Windscreen - Stone chips - No deduction
5	Door - front right side	Door - Scratch(es) - No deduction
6	Roof	Roof - dent(s) - No deduction

The vehicle shows signs of wear and tear commensurate with its age and use.

Previous damages

No.	Previous damage	Extent of damage (Net)
1	Front, Side - left, Side right, Provided by user / customer, from 5 Aug 2023	31.750,50 €

Repainting

No.	Repainting
1	Mudguard - left side, Professionally carried out, Invoice of repair done Non-existent
2	Door - rear right side, Professionally carried out, Invoice of repair done Non-existent
3	Door - front right side, Professionally carried out, Invoice of repair done Non-existent

Paint coat thickness measurement

Mudguard - left side	176 µm	Door - rear right side	165 µm
Door - front right side	249 µm		



Order/Scope of Order

An order was placed to prepare a sales report for the described vehicle. This report includes the following:

- Description of key vehicle information
- Documentation of equipment features
(Delivery by third-party service providers)
- Documentation of damage, defects, missing parts
- Documentation of prior damage, unrepaired prior damage, repainting
- A brief visual or functional inspection of the equipment details, if possible.
(Functional testing of driver assistance systems is not included in the scope of services!)
- a photographic documentation of the vehicle

Basis for the order

This product is based on the guidelines for vehicle returns and valuations published by Alphabet Fleet GmbH. The expert makes the specific findings in each individual case objectively, within the framework of the prescribed standards, based on their own expertise.

The vehicle inspection takes place in a fully assembled, unassembled state.

Damage or defects that can only be detected during disassembly/diagnostic work or through further investigation remain within the realm of prognostic risk. An increased risk exists due to concealed defects caused by fraudulent misrepresentation and which were not identifiable by the expert.

Damage or defects resulting from normal use or wear and tear of the vehicle will be accepted in accordance with the applicable standard.

There was no explicit identification or monetary consideration of the expected features within the product.

Features which, in their nature and extent, slightly exceed normal use but do not constitute unacceptable damage, will be documented and indicated as signs of wear, if applicable.

Damage or defects that, according to the applicable standard, can no longer be attributed to normal use or wear and tear are listed under "Value Reducing Factors" in the product description.

Depending on the product specification, a monetary ID can be provided. If this takes place, the costs can be 100% or pro rata depending on the vehicle's age and mileage.

Previous damages

According to available information previous damages were repaired at the vehicle. Traces of repairs, which allow conclusions about the area of repair, were not recognizable during the inspection.



Figure 1: Diagonal front (left)



Figure 2: Diagonal front (right)



Figure 3: Diagonal rear (left)



Figure 4: Diagonal rear (right)



Figure 5: Interior - front



Figure 6: Interior - rear



Figure 7: Instrument cluster



Figure 8: Instrument panel



Figure 9: Interior 360° view



Figure 10: Cargo area



Figure 11: VIN



Figure 12: Mounted tyres



Figure 13: Documents



Figure 14: Additional tyres



Figure 15: Additional tyres

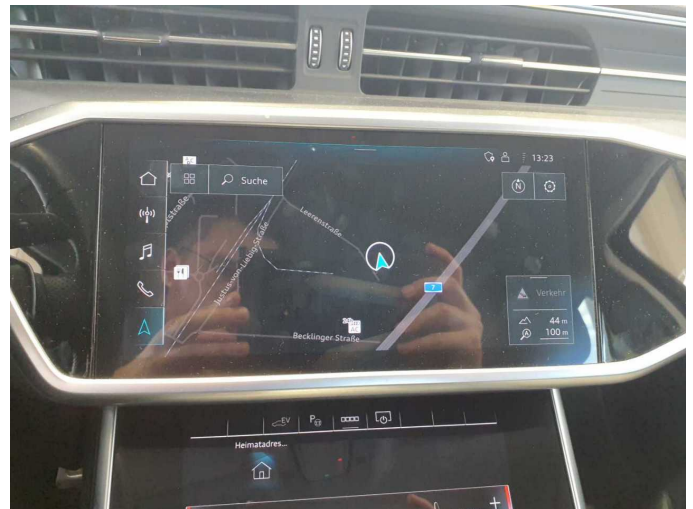


Figure 16: Navigation



Figure 17: Misc.



Figure 18: Misc.



Figure 19: Misc.



Figure 20: Misc.



Figure 21: Misc.



Figure 22: Misc.



Figure 23: Misc.



Figure 24: Misc.



Figure 25: Misc.



Figure 26: Misc.



Figure 27: Misc.



Figure 28: Misc.



Damage 1: Trim / covers: Door trim - rear right side (Durch gelagerten Radsatz) - Deformed - Loss in value



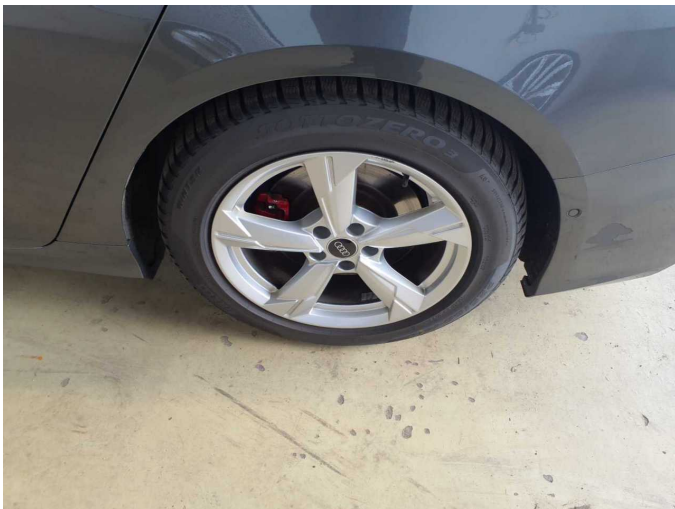
Damage 1: Trim / covers: Door trim - rear right side (Durch gelagerten Radsatz) - Deformed - Loss in value



Damage 2: 2nd wheel set: 1 alloy rim - Scratch(es) - Loss in value



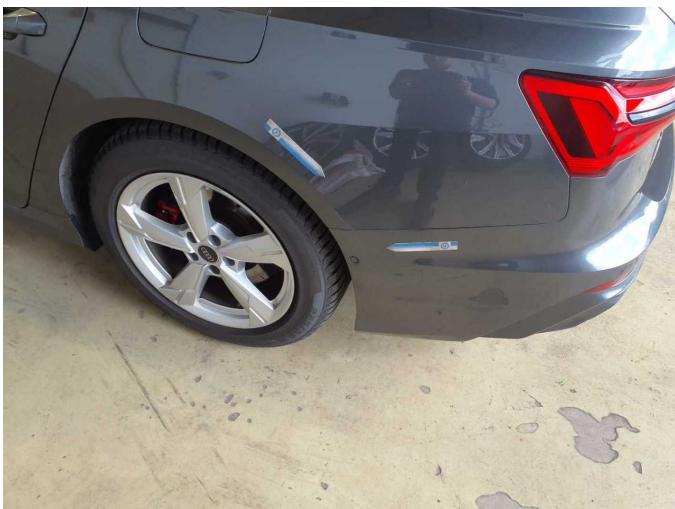
Damage 2: 2nd wheel set: 1 alloy rim - Scratch(es) - Loss in value



Damage 3: Wheel / tyres: Alloy rim - rear left side - Scratch(es) - Loss in value



Damage 3: Wheel / tyres: Alloy rim - rear left side - Scratch(es) - Loss in value



Damage 4: Side panel - rear left side: Side panel - Scratch(es) - Smart repair



Damage 4: Side panel - rear left side: Side panel - Scratch(es) - Smart repair



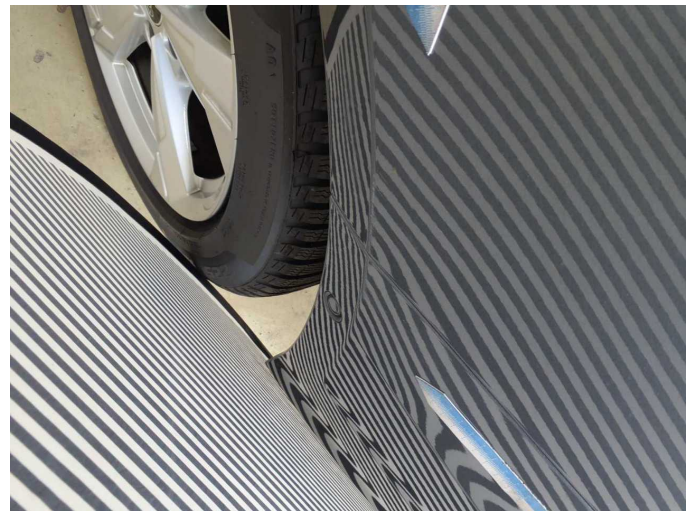
Damage 4: Side panel - rear left side: Side panel - Scratch(es) - Smart repair



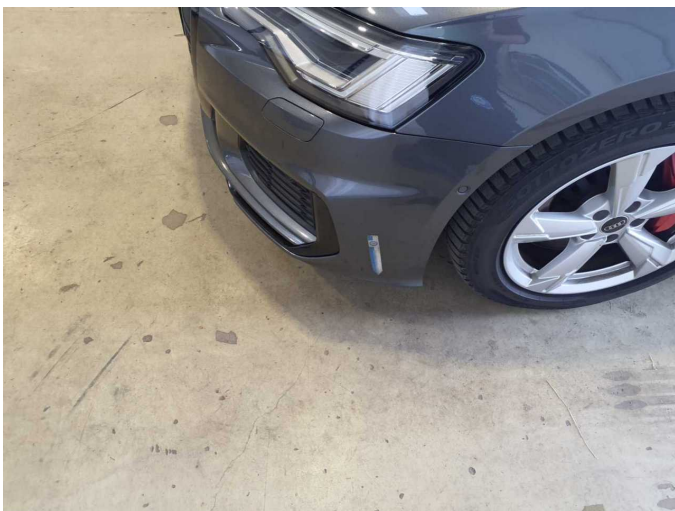
Damage 5: Rear bumper: Rear bumper - Scratch(es) - Smart repair



Damage 5: Rear bumper: Rear bumper - Scratch(es) - Smart repair



Damage 5: Rear bumper: Rear bumper - Scratch(es) - Smart repair



Damage 6: Front bumper: Front bumper - Scratch(es) - Paint



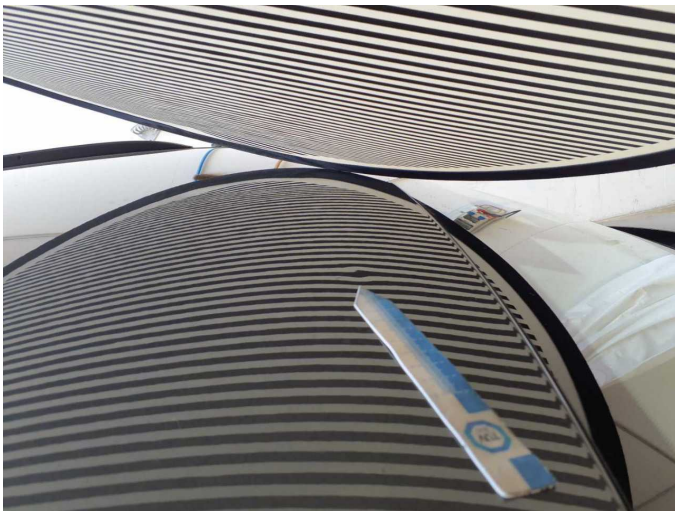
Damage 6: Front bumper: Front bumper - Scratch(es) - Paint



Damage 6: Front bumper: Front bumper - Scratch(es) - Paint



Wear and tear 6: Roof: Roof - dent(s) - No deduction



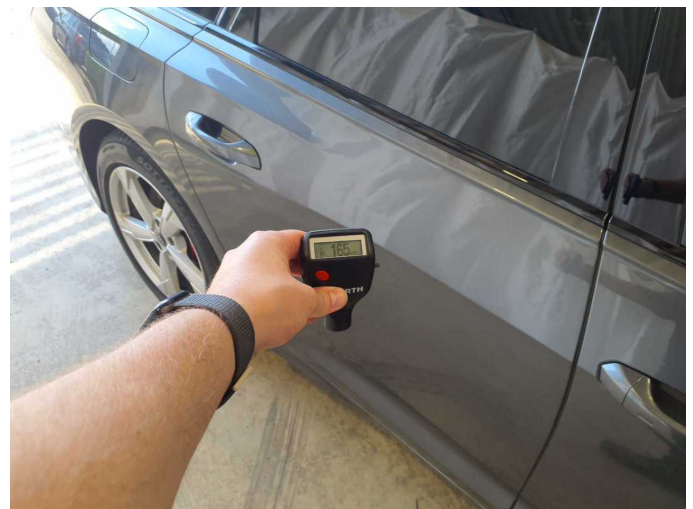
Wear and tear 6: Roof: Roof - dent(s) - No deduction



Repainting 1: Mudguard - left side



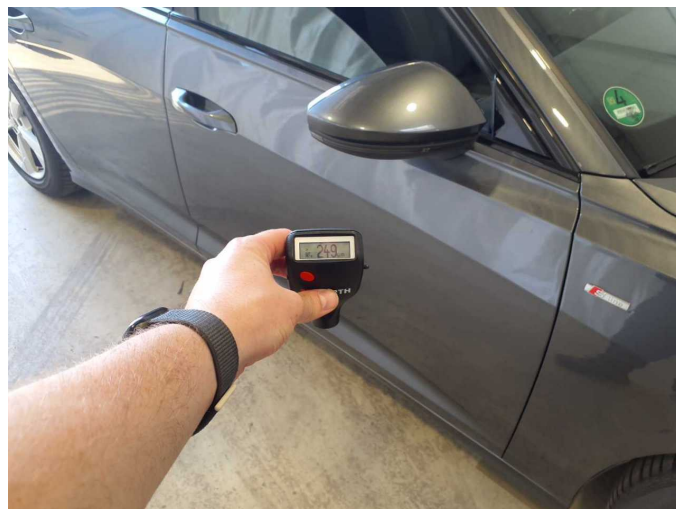
Repainting 1: Mudguard - left side



Repainting 2: Door - rear right side



Repainting 2: Door - rear right side



Repainting 3: Door - front right side



Repainting 3: Door - front right side