

Expertise

Protocol number: 46368534
Order No. / Reference: 26545768
Inspection date: 2 Jul 2026

Manufacturer: Seat

Model: Arona 1.0 TSI OPF Style

VIN: VSSZZKJZNR043124



Vehicle details

Manufacturer / Type / Model / Equipment

Seat Arona 1.0 TSI OPF Style

Vehicle Identification number VSSZZKJZNR043124

Mileage (Read) 120,078 km

First registration 2 Mar 2022

Number of holders 1

Power / Engine displacement 81 kw / 999 ccm

Fuel type / Cylinder Petrol / 3

Gearbox / Number of gears Manual / 6

Type of drive Front drive

Type of vehicle SUV

Colour / colour code Midnight Schwarz Metallic

Doors / Seats 5 / 5

Upholstery type Cloth

Colour of upholstery Grey-Black



Vehicle details			
Maintenance booklet / proof	digital proof / complete	Next maintenance in	15,900 km
Last service on / at	07/2025 at 105,963 km		
Key is / should be	2 / 2	FZG documents	ZB#2 (B) was available (copy), ZB#1 (S) was not available.
		Letter No.	GG155332
Previous damage / Accident	Detectable	Repainting	None detectable
Inspection conditions	sufficient	Lifting equipment / pit	yes
Test drive	Not performed	Engine function test	Performed
Manufacturer key number/ type code number	7593 / ARJ 01397		
Emission standard	EURO6;WLTP;AP;PI/CI; M, N1 I	fine dust sticker	
Permitted total weight	1,630 kg	Empty weight	

Tyres

Mounted tyres				
#	Tyre size	Type of tyre	Manufacturer	Tread depth
1)	205/60 R16 92H	All-season tyres on Light alloy	Goodyear	5mm / 5mm
2)	205/60 R16 92H	All-season tyres on Light alloy	Goodyear	5mm / 5mm

Replacement				
Typ	Tyre size	Type of tyre	Manufacturer	Tread depth
	Tirefit	Expiration date 07/2025		

Legend: Tread depth information for the left tire is listed first, for the right tire it is listed second on the axle in the direction of travel.



Equipment

Standard equipment

- 12V socket at the front
- Airbags
- Exterior mirror housings in body color
- Hill Start Assist (HHC)
- On-board computer
- Electronic differential lock (XDS)
- Three-point automatic seat belts, front and rear
- Electronic Stability Control (ESC)
- Luggage compartment cover
- Speed limiter
- Transmission: 6-speed transmission
- Heated rear window with timer function
- ISOFIX child seat restraint system
- Child safety locks on the rear doors
- Illuminated trunk
- Paintwork: Vehicle roof in body color
- Steering wheel: Steering column with height and reach adjustment
- Light sensor
- Multi-collision brake
- Emergency call service
- Pollen filter
- Radio: 8.25" Media System
- Tire pressure monitoring system
- Front windshield wipers with intermittent function
- Seats: Driver's seat with height adjustment
- Lane departure warning system
- Bumpers in body color
- Front Assist area monitoring system with City Emergency Braking function and pedestrian detection
- Central locking with remote control and comfort closing

Extra equipment

- Full LED headlights (low beam, high beam and turn signals at the front in LED technology - dynamic headlight range control - rear lights in LED technology)
- Package: Climate Comfort Package (Heated and electrically folding exterior mirrors - Automatic coming home and leaving home function - Climatronic with electronic temperature control, separate temperature control for driver and front passenger - Automatically dimming interior mirror - Rain sensor)
- Package: Storage package (front center armrest - storage compartment under the passenger seat - owner's manual holder under the driver's seat - lashing eyes in the luggage compartment)
- Side windows from the 2nd row of seats and rear window are dark tinted.
- Wheels: 4 all-season tires on alloy wheels "Design 20/1" (6J x 16", tires 205/60 R16)

- Storage compartment in the front doors
- Electrically adjustable exterior mirrors
- Outdoor temperature display
- Turn signals in the wing mirrors
- Roof rails and design element in the C-pillar in black
- Tachometer
- Third brake light integrated into the rear spoiler
- Electric window regulator with anti-pinch protection and one-touch function
- Cruise control
- Cup holders, 2 front
- Rear window wiper/washer system with intermittent function
- Air conditioning
- Height-adjustable headrests, front and rear
- LED technology for headlights and daytime running lights
- Steering wheel: Multifunction steering wheel in nappa leather
- Air vents in the dashboard in yellow
- Fatigue detection
- Otto particulate filter
- Upholstery: Cloth
- Radio: Digital radio reception DAB+
- Wheels: Tyre fit
- Electromechanical power steering
- Seats: Rear seat backrest split 1/3 to 2/3, foldable
- Start-stop technology
- Door handles in car color
- Electronic immobilizer
- Thermal insulation glazing

- Navigation: Navigation data for Europe including MAPCARE (on SD card) for navigation systems
- Package: Infotain (9.2" media system with navigation system and Full Link, prepared for activation of the SEAT CONNECT online infotainment service package - wireless charger)
- Package: Safety (Parking Assist with ultrasonic parking aid front and rear incl. reversing camera - Driving Assistance Package M for navigation system - Adaptive Cruise Control ACC - High Beam Assist - Traffic Sign Recognition)
- Package: Winter (Passenger seat with height adjustment - Heated front seats - Heated and electrically folding exterior mirrors)
- Paint finish: Metallic
- Virtual Cockpit (fully digital instrument cluster with TFT display)



Brief expert findings

Documents submitted	At the time of the inspection, the vehicle registration certificate Part 2 (title) was available, but the vehicle registration certificate Part 1 (document) was not. (Copy)
VIN comparison	The vehicle identification number (VIN) was read from the vehicle and its conformity with the submitted documents was confirmed by the undersigned during the inspection.
Inspection	The inspection conditions were sufficient for the assessment of the vehicle. Lifting equipment and/or a pit were available for examining the vehicle.
Test drive	No test drive/shunting maneuver was carried out during the inspection of the vehicle.
Engine function test	An engine test run was performed.

Value reducing factors

No.	Component group	Description
1	Equipment	Tirefit filler - Expired - Replace
2	Sill - right side	Trim - Scratched - Replace
3	Rear bumper	Rear bumper - Scratch(es) - Smart repair
4	Side panel - rear right side	Side panel - Dent / paintcoat damage - Smart repair
5	Side panel - rear left side	Side panel - Dent / paintcoat damage - Smart repair
6	Interior	Interior (Farbe) - Soiled - Conditioning
7	Rear bumper	Spoiler - Scratch(es) - Replace
8	Wheel / tyres	Alloy rim - front right side - Scratched - Replace
9	Mudguard - left side	Mudguard - left side - Scratch(es) - Paint
10	Door - rear left side	Door - Scratched - Paint
11	Door - front right side	Door - Scratch(es) - Paint
12	Door - front left side	Door - Scratch(es) - Paint
13	Bonnet	Bonnet - Dent / paintcoat damage - Repair and paint

Wear and tear

No.	Component group	Description
1	Side panel - rear left side	Wheel arch - Scratch(es) - No deduction

The vehicle shows signs of wear and tear commensurate with its age and use.

Missing parts

Description

Equipment - Tirefit compressor

Previous damages

No.	Previous damage	Extent of damage (Net)
1	Front, Provided by user / customer, from 28 Sept 2024	2.101,92 €
2	Side right, Provided by user / customer, from 4 Nov 2025	2.585,57 €



Order/Scope of Order

An order was placed to prepare a sales report for the described vehicle. This report includes the following:

- Description of key vehicle information
- Documentation of equipment features
(Delivery by third-party service providers)
- Documentation of damage, defects, missing parts
- Documentation of prior damage, unrepaired prior damage, repainting
- A brief visual or functional inspection of the equipment details, if possible.
(Functional testing of driver assistance systems is not included in the scope of services!)
- a photographic documentation of the vehicle

Basis for the order

This product is based on the guidelines for vehicle returns and valuations published by Alphabet Fleet GmbH. The expert makes the specific findings in each individual case objectively, within the framework of the prescribed standards, based on their own expertise.

The vehicle inspection takes place in a fully assembled, unassembled state.

Damage or defects that can only be detected during disassembly/diagnostic work or through further investigation remain within the realm of prognostic risk. An increased risk exists due to concealed defects caused by fraudulent misrepresentation and which were not identifiable by the expert.

Damage or defects resulting from normal use or wear and tear of the vehicle will be accepted in accordance with the applicable standard.

There was no explicit identification or monetary consideration of the expected features within the product.

Features which, in their nature and extent, slightly exceed normal use but do not constitute unacceptable damage, will be documented and indicated as signs of wear, if applicable.

Damage or defects that, according to the applicable standard, can no longer be attributed to normal use or wear and tear are listed under "Value Reducing Factors" in the product description.

Depending on the product specification, a monetary ID can be provided. If this takes place, the costs can be 100% d or pro rata depending on the vehicle's age and mileage.

Previous damages

According to available information previous damages were repaired at the vehicle. Traces of repairs, which allow conclusions about the area of repair, were not recognizable during the inspection.

Comments

Wartungshistorie gemäß Auftraggeber Informationen.



Figure 1: Diagonal front (left)



Figure 2: Diagonal front (right)



Figure 3: Diagonal rear (left)



Figure 4: Diagonal rear (right)

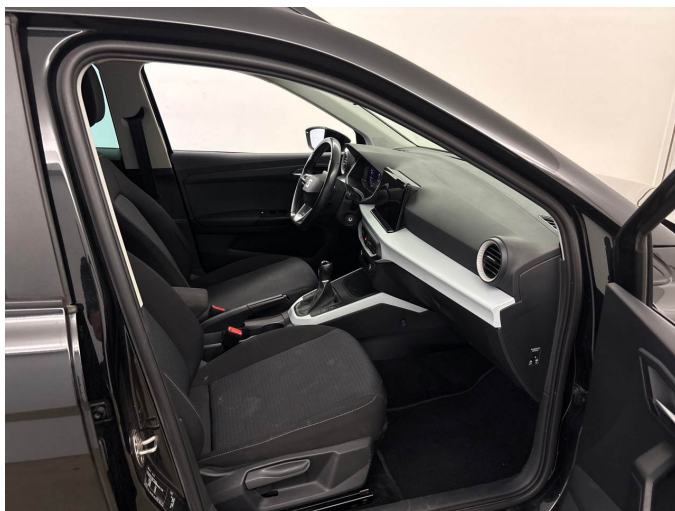


Figure 5: Interior - front



Figure 6: Interior - rear



Figure 7: Instrument cluster



Figure 8: Instrument panel



Figure 9: Interior 360° view



Figure 10: Cargo area

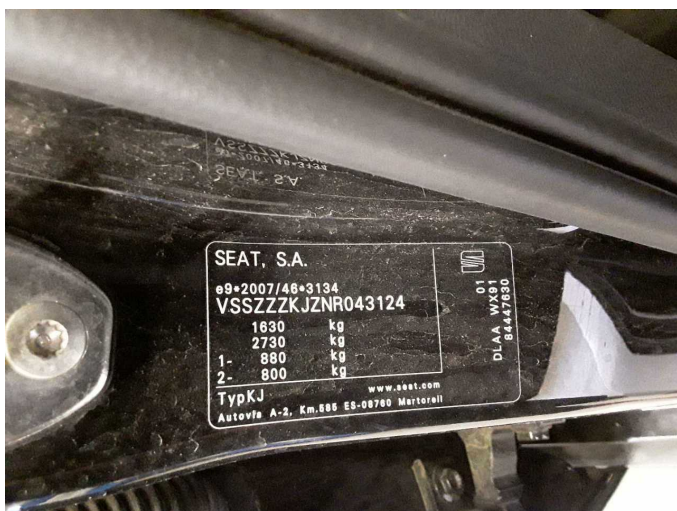


Figure 11: VIN



Figure 12: Mounted tyres



Figure 13: Documents



Figure 14: Navigation



Figure 15: Misc.



Figure 16: Misc.



Figure 17: Misc.



Figure 18: Misc.



Figure 19: Misc.



Figure 20: Misc.

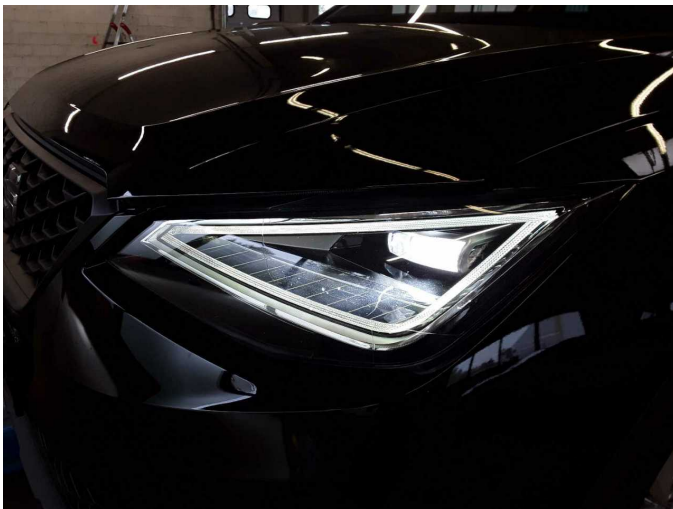


Figure 21: Misc.



Figure 22: Misc.



Figure 23: Misc.



Figure 24: Misc.



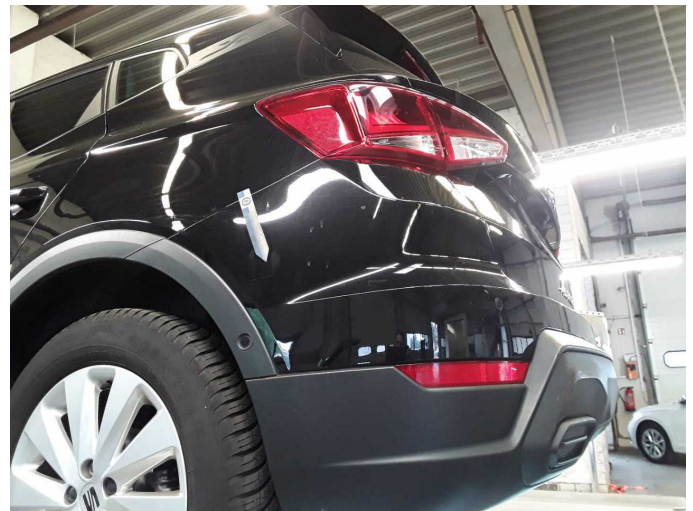
Figure 25: Misc.



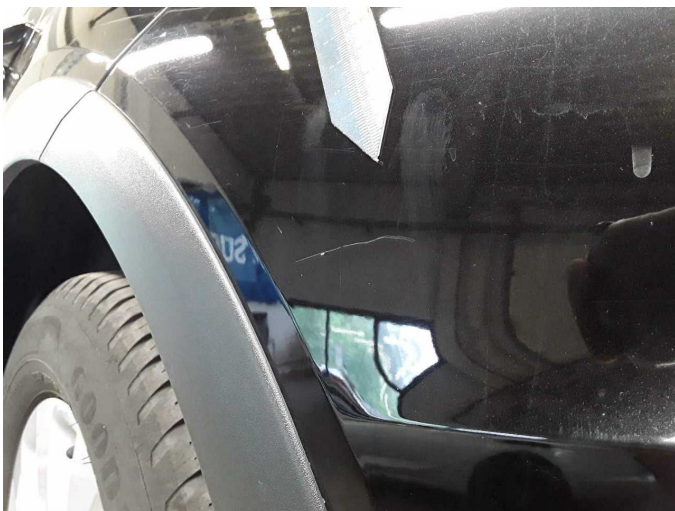
Damage 2: Sill - right side: Trim - Scratched - Replace



Damage 2: Sill - right side: Trim - Scratched - Replace



Damage 3: Rear bumper: Rear bumper - Scratch(es) - Smart repair



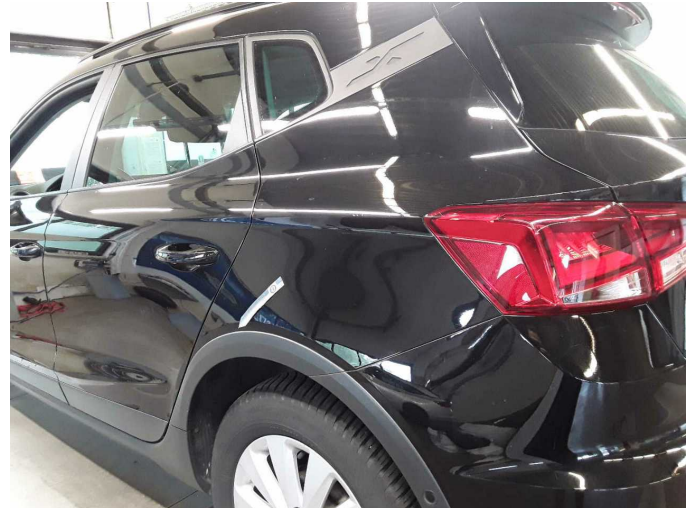
Damage 3: Rear bumper: Rear bumper - Scratch(es) - Smart repair



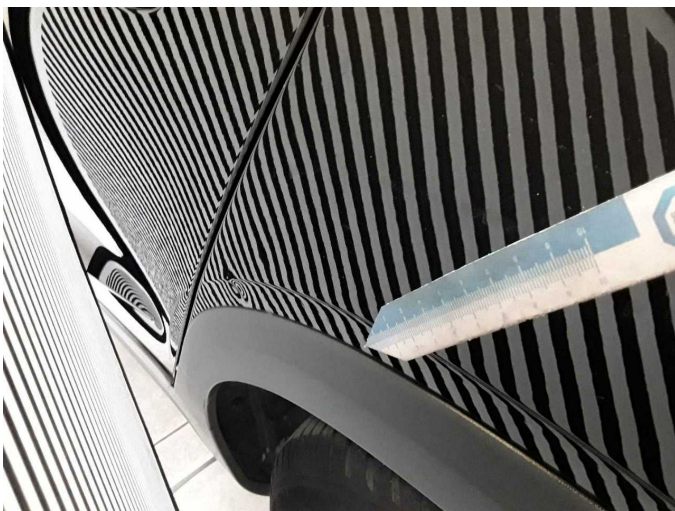
Damage 4: Side panel - rear right side: Side panel - Dent / paintcoat damage - Smart repair



Damage 4: Side panel - rear right side: Side panel - Dent / paintcoat damage - Smart repair



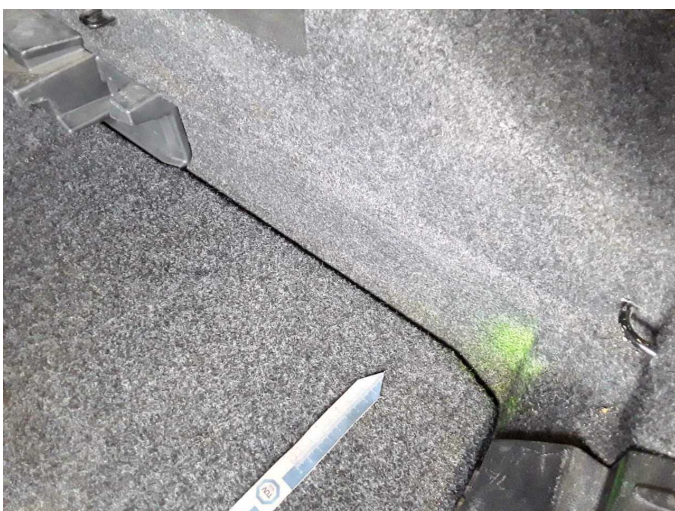
Damage 5: Side panel - rear left side: Side panel - Dent / paintcoat damage - Smart repair



Damage 5: Side panel - rear left side: Side panel - Dent / paintcoat damage - Smart repair



Damage 5: Side panel - rear left side: Side panel - Dent / paintcoat damage - Smart repair



Damage 6: Interior: Interior (Farbe) - Soiled - Conditioning



Damage 7: Rear bumper: Spoiler - Scratch(es) - Replace



Damage 7: Rear bumper: Spoiler - Scratch(es) - Replace



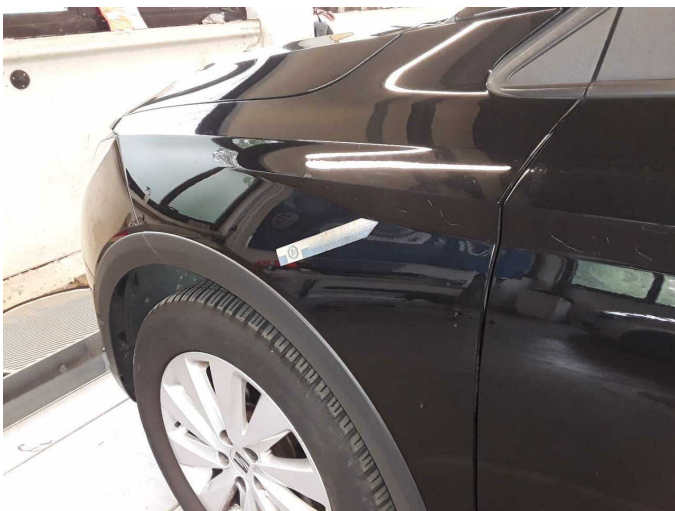
Damage 7: Rear bumper: Spoiler - Scratch(es) - Replace



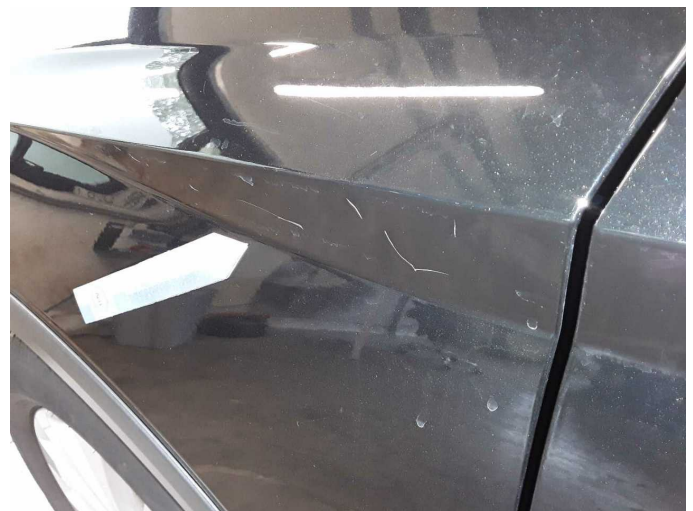
Damage 8: Wheel / tyres: Alloy rim - front right side - Scratched - Replace



Damage 8: Wheel / tyres: Alloy rim - front right side - Scratched - Replace



Damage 9: Mudguard - left side: Mudguard - left side - Scratch(es) - Paint



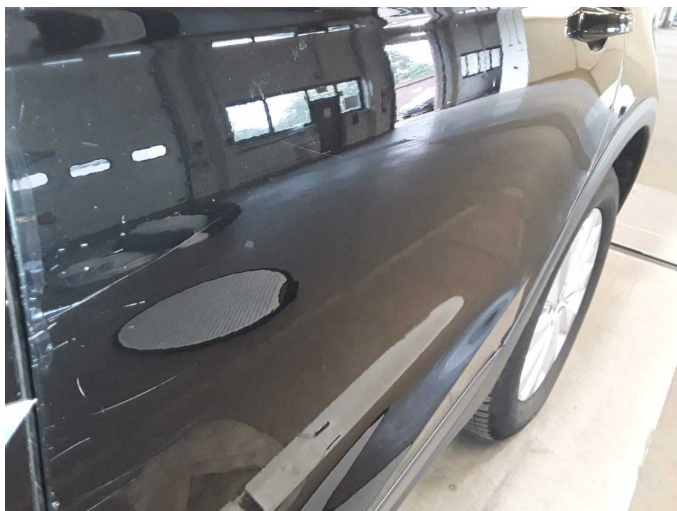
Damage 9: Mudguard - left side: Mudguard - left side - Scratch(es) - Paint



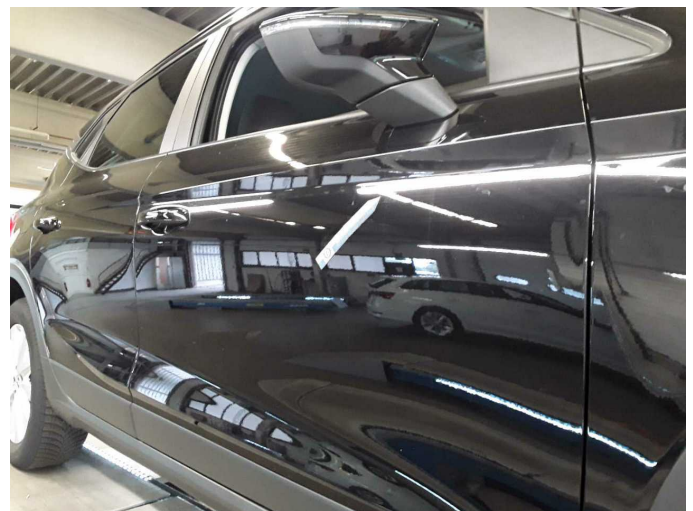
Damage 10: Door - rear left side: Door - Scratched - Paint



Damage 10: Door - rear left side: Door - Scratched - Paint



Damage 10: Door - rear left side: Door - Scratched - Paint



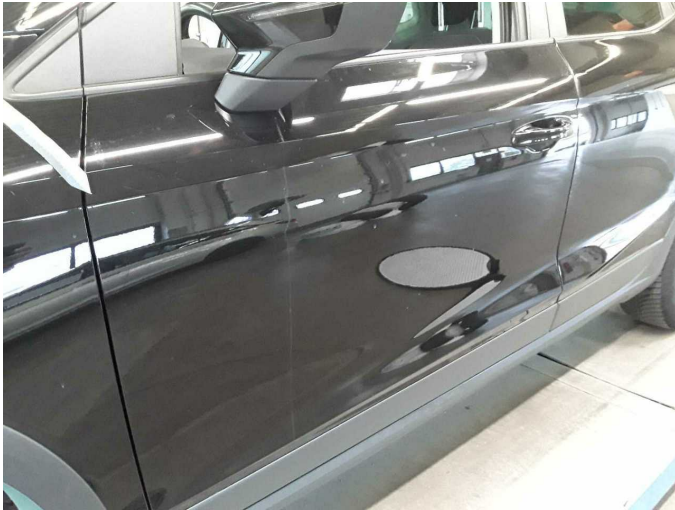
Damage 11: Door - front right side: Door - Scratch(es) - Paint



Damage 11: Door - front right side: Door - Scratch(es) - Paint



Damage 11: Door - front right side: Door - Scratch(es) - Paint



Damage 12: Door - front left side: Door - Scratch(es) - Paint



Damage 12: Door - front left side: Door - Scratch(es) - Paint



Damage 13: Bonnet: Bonnet - Dent / paintcoat damage - Repair and paint



Damage 13: Bonnet: Bonnet - Dent / paintcoat damage - Repair and paint



Missing part 1: Equipment: Tirefit compressor - Missing - Replace



Wartungshistorie

(gemäß Auftraggeber Informationen)

Fahrgestellnummer: VSSZZZKJZNR043124
Hersteller / Modell: SEAT SEAT Arona 1.0 TSI OPF Style

Datum	KM-Stand	Beschreibung
24.07.2025	105.963	AU; Motoröl b. Wartung; Ölfilter ern; Regelwartungsdienst; Wartung Sonstiges
22.08.2024	68.498	Bremse Sonstiges; Bremsflüssigkeit; Bremsflüssigkeit ern; Bremsklötze hinten; Bremsklötze vorne; Bremsscheiben hinten; Bremsscheiben vorne; Handbremsseil ern; Motoröl b. Wartung; Ölfilter ern; Regelwartungsdienst; Wartung Sonstiges; Zündkerzen ern
09.10.2023	38.690	Motoröl b. Wartung; Ölfilter ern; Ölwechsel; Wartung Sonstiges
02.06.2023	29.625	Regelwartungsdienst
01.09.2022	9.862	Motoröl b. Wartung; Ölfilter ern; Ölwechsel; Wartung Sonstiges