

## Expertise

Protocol number: 46294664  
Order No. / Reference: 26587615  
Inspection date: 26 Jun 2026

Manufacturer: Mercedes-Benz

Model: GLC 300 e 4Matic 9G-TRONIC Avantgarde Advanced

VIN: W1NKM5GB9PF010558



### Vehicle details

#### Manufacturer / Type / Model / Equipment

Mercedes-Benz GLC 300 e 4Matic 9G-TRONIC Avantgarde Advanced

**Vehicle Identification number** W1NKM5GB9PF010558

**Mileage (Read)** 97,450 km

**First registration** 26 Apr 2023

**Number of holders** 1

**Power / Engine displacement** 150 kw / 1,999 ccm

**Fuel type / Cylinder** Hybr.B/E ext.auf / 4

**Gearbox / Number of gears** Automatic / 9

**Type of drive** All-wheel drive

**Type of vehicle** SUV

**Colour / colour code** OBSIDIANSCHWARZ -  
METALLICLACK

**Doors / Seats** 5 / 5

**Upholstery type** Cloth / leather  
combination

**Colour of upholstery** Black-Grey



**Vehicle details**

<b>Maintenance booklet / proof</b>	Non-existent	<b>Next maintenance in</b>	327 Tag(e)
<b>Key is / should be</b>	2 / 2	<b>FZG documents</b>	ZB#2 (B) was available (copy), ZB#1 (S) was not available.
		<b>Letter No.</b>	GS703335
<b>Previous damage / Accident</b>	None detectable	<b>Repainting</b>	None detectable
<b>Inspection conditions</b>	sufficient	<b>Lifting equipment / pit</b>	yes
<b>Test drive</b>	Not performed	<b>Engine function test</b>	Performed
<b>Manufacturer key number/ type code number</b>	2222 / BLC 00025		
<b>Emission standard</b>	EURO6;WLTP;AP;PI/CI; M, N1 I	<b>fine dust sticker</b>	
<b>Permitted total weight</b>	2,890 kg	<b>Empty weight</b>	

**Tyres**

**Mounted tyres**

#	Tyre size	Type of tyre	Manufacturer	Tread depth
1)	235/55 R19 105W	Summer tyres on Light alloy	Continental	5mm / 5mm
2)	255/50 R19 107W	Summer tyres on Light alloy	Continental	5mm / 5mm

**Additional tyres**

#	Tyre size	Type of tyre	Manufacturer	Tread depth
1)	235/55 R19 105W	All-season tyres on Light alloy	Pirelli	7mm / 7mm
2)	255/50 R19 107Y	All-season tyres on Light alloy	Pirelli	7mm / 7mm

**Replacement**

Typ	Tyre size	Type of tyre	Manufacturer	Tread depth
Tirefit		Expiration date 01/2028		

**Legend: Tread depth information for the left tire is listed first, for the right tire it is listed second on the axle in the direction of travel.**

TÜV SÜD Auto Partner GmbH  
Wiesenring 2  
04159 Leipzig

Inspection location  
Hartmann Fleet Professionals GmbH  
Leerenstraße 25  
29683 Bad Fallingbommel



## Equipment



## Standard equipment

- Adaptive Highbeam Assist (automatic switching of the high beams on and off - camera on the inside of the windshield - detects oncoming and preceding illuminated vehicles - activated by pressing the steering wheel control lever to the high beam position)
- Active Lane Keeping Assist
- Ambient lighting (Three dimming zones (total, ambient and accent) - Variable brightness setting - 64 colors - Ten color moods - Integrated into the ENERGIZING comfort control programs)
- Roof rails made of glossy anodized aluminum
- Double cup holder
- Downhill Speed Regulation (DSR) (Speed setting between 2 and 18 km/h via the cruise control - switch for turning it on and off in the center console - display in the multimedia display)
- EASY-PACK tailgate (electrically opening and closing tailgate - switch for electrically opening the tailgate in the driver's door - button for electrically opening the tailgate in the vehicle key - switch for electrically closing the tailgate on the lower edge of the tailgate)
- Chassis: Comfort chassis (The comfort chassis with selective damping system and level control combines balanced ride comfort and high driving stability. Thanks to the passive damping system, you enjoy a confident driving experience on any road surface: rolling behavior, damping effect and stabilization are continuously and automatically adjusted.)
- Transmission: 9G-TRONIC
- Rear window wiper/washer system
- Instrument panel in black with contrasting decorative stitching
- Radiator grille with integrated Mercedes star (incl. louvre with chrome overlay and frame of the radiator grille in chrome)
- Charging cable for household socket, 5m, smooth (This charging cable, also called Mode 2 cable, allows you to charge the vehicle battery at the household socket with up to 1.8 kW (230 V, 1-phase, 8 A) and fits sockets of type E/F CEE 7/7.)
- Charging cable for wallbox and public charging station, 5m, smooth (This charging cable, also called Mode 3 cable, allows you to charge the vehicle battery at the wallbox or at public charging stations with up to 11 kW (Type 2, 3-phase, 16 A).)
- Steering wheel: Multifunction sports steering wheel in leather (sporty steering wheel in 3-spoke design - leather finish - black grained shift paddles - control via touch panels: left: driver display, cruise control and limiter or active distance assist DISTRONIC; right: MBUX multimedia system (e.g. audio volume and track selection, telephony and navigation); touch sensitivity adjustable via central display)
- Navigation: MBUX Navigation Premium (Pre-installation for navigation services - Hard drive navigation - Pre-installation for Live Traffic Information - 3 years of free navigation updates for map data)
- Otto particulate filter
- Package: Storage (map pockets on the back of the front seats - folding box - cargo bar, which allows the backrest of the rear seats to be raised by 10°)
- Airbag for driver and front passenger
- Airbag: Kneebag for driver
- Airbag: Sidebag for driver and front passenger (combined thorax/pelvisbag)
- Airbag: Windowbag
- 4MATIC all-wheel drive
- Anti-lock braking system (ABS)
- Traction control (ASR)
- Automatic passenger airbag deactivation
- Brake system with larger brake discs on the front axle (drilled front brake discs and front brake calipers with Mercedes-Benz lettering).
- Tachometer
- Dynamic front bumper with visual underguard (in glossy chrome and diamond mesh air intakes in grained black - rear bumper painted in body color with visual underguard in glossy chrome)
- EASY-Pack: Cargo area cover
- Electronic Stability Program (ESP)
- Driver display (31.2 cm (12.3") color LCD display with a resolution of 2400 x 900 pixels - 7 different contexts with specific content - 3 different display styles)
- Fingerprint scanner (color-illuminated fingerprint scanner in the control bar below the central display - two fingerprints can be stored per user - faster access replaces PIN entry - protects personal data such as profiles as well as office and payment functions)
- Velour floor mats
- Rear window heated
- Interior headliner fabric crystal grey
- Climate: THERMATIC automatic climate control (2-zone automatic climate control - control of climate settings - depending on equipment - sensor system for detecting, for example, indoor/outdoor temperature, solar radiation, humidity and dew point - automatic recirculation - ventilation system: 3 center vents in the center area and 2 side vents (each swiveling and adjustable), 2 air vents each in the footwell for driver and front passenger - fine dust activated carbon filter for filtering dust, soot and pollen - dew point sensor)
- Charging system: Alternating current charging system (AC charging) up to 11 kW (3-phase)
- LED High Performance headlights (torch and trifunctional light guide for daytime running lights, position lights and turn signals - multi-chamber reflector system with 4 individual reflectors each) for low beam and high beam. The rear light elements in LED technology: - All light functions in full LED technology - tail light - brake light and parking light - rear fog light (left side only) - turn signals in the white light strip - reversing light in the white light strip - 3rd brake light



- Package: Boot Comfort Package (electrically foldable rear seat backrests via switches on the right and left in the control panel in the cargo area - 12V socket on the left in the control panel in the cargo area - tension strap on the right side wall - reversible mat with a rubberized, non-slip side and a soft velour side)
- Package: Seating Comfort (various electric and manual adjustment options for the front seats to adapt to the specific body and comfort requirements of the driver and front passenger - electropneumatic 4-way lumbar support and lateral support adjustment with control element on the seat - electric seat cushion tilt adjustment - electric height adjustment - electric backrest adjustment - electric seat cushion depth adjustment by 6 cm with leg rest pad - mechanical longitudinal adjustment - mechanical headrest adjustment)
- Package: USB package (2 USB-C ports under the front center armrest, suitable for data transfer)
- Upholstery: ARTICO leatherette/fabric
- Radio accessories: MBUX multimedia system
- Remote Services Plus (Communication module - Mercedes me services: Remote vehicle status query, programming of auxiliary heating/ventilation, remote door locking and unlocking, sunroof/windows with remote closing and opening including ventilation function, personalization of vehicle location, vehicle tracking, geographic vehicle monitoring, parking service monitoring, finder function (Remote Vehicle Finder), notification when exceeding the driving speed)
- Windscreen wipers with rain sensor
- Heated seats for driver and front passenger
- Phone accessories: Smartphone integration (Smartphone integration merges your mobile phone with the media system via Apple CarPlay and Android Auto. This gives you convenient access to your smartphone's most important applications. You can also use third-party apps like Spotify quickly and easily. Features include: app display, access to current software and data (e.g., for navigation, traffic information, contacts, messaging, telephony, media), and voice control of smartphone functions.)
- High-visibility vest for drivers
- Immobiliser
- Heat-insulating dark tinted glass
- Central display (touchscreen with LCD technology - 30.2 cm (11.9") screen diagonal - resolution of 1,624 x 1,728 pixels (width x height) - tilted 6° - 7° towards the driver)
- Central locking with remote control
- Navigation accessories: Extended MBUX functions (personalization (profiles) and predictive functions - MBUX voice assistant with natural language understanding - activation via "Hey Mercedes" - learning function of the MBUX voice assistant through connection with a cloud-based online dictionary, Mercedes me connect service free of charge for 3 years from activation - Wi-Fi hotspot - internet radio)
- Package: Chrome Interior Package
- Package: Interior lighting (More light, more atmosphere, better orientation: The interior lighting package provides more comprehensive direct and indirect lighting. The additional light elements create a pleasant atmosphere and make operation easier.)
- Package: Parking package with reversing camera (12 ultrasonic sensors: 6 each in the front and rear bumpers - reversing camera: integrated into the trunk lid, display in the media display, trailer mode - Active Parking Assist PARKTRONIC: detects parking spaces, assisted parking, assisted exiting, visual and acoustic warning of detected obstacles, display of camera and ultrasonic data in the central display, button for Active Parking Assist with PARKTRONIC - cross traffic warning - maneuvering brake - drive-away assist)
- Package: Mirror package (interior and exterior mirrors on the driver's side automatically dimming - exterior mirrors left and right electrically folding - ambient lighting in the exterior mirrors)
- Radio accessories: Digital radio (DAB)
- Tire pressure loss warning
- Remote and Charging Services Plus (The Remote and Charging Services Plus package connects you to the vehicle. You can locate it if desired and remotely control selected functions. With Mercedes me Charge, you can charge your vehicle at many public charging stations with maximum cost transparency. You only need to register once and receive a single, centralized bill.)
- Wheels: Summer tires
- Wheel accessories: TIREFIT with tire inflator compressor
- Power steering
- Telephone accessories: Wireless charging system for mobile devices (wireless charging according to Qi standard for compatible mobile phones - fast connection setup between multimedia system and mobile phone via Near Field Communication (NFC) for identification of the mobile device - storage compartment for wireless charging is located in the storage compartment at the front of the center console)
- Cruise control
- Pre-installation for digital key handover (Share your vehicle with friends and family members more easily than ever before – no matter where you are. You retain full control and decide conveniently via app whether you consent to its use. You can also unlock your vehicle remotely via the mobile application. Only then will a stored key be activated. Service is free of charge for 3 years from activation.)
- Decorative elements in diamond pattern, silver-grey



## Extra equipment

- Center console diamond pattern silver grey
- Charging system: DC on-board charger (60 kW) (For your optimal charging speed with up to 60 kW)
- ENERGIZING AIR CONTROL (Air quality sensor and separate fine dust sensors for indoor and outdoor use detect harmful inhalable gases in the outdoor air as well as fine dust (PM2.5) in the outdoor and indoor air - Fine dust filtration with 2 filters, consisting of a fine dust pre-filter and an indoor air filter - Indoor air filter in the air conditioner based on activated carbon with filter layers against fine dust (PM2.5) and nitrogen oxides (NOx) or sulfur dioxide (SO2) as well as pollen, allergens and soot particles - automatic recirculation)
- Instrument panel and door sills in ARTICO man-made leather in black nappa look
- Package: Avantgarde Advanced Plus (electrically adjustable driver's seat with memory function - Blind Spot Assist - Ambient lighting with directly illuminated light lines - Illuminated door sills with "Mercedes-Benz" lettering - Traffic Sign Assist)
- Package: Off-road Engineering Package (comfort suspension with 20 mm higher ground clearance - metal underbody protection at the front - Gemtex durable plastic underbody protection on the sides)
- Package: Parking package with 360° camera (12 ultrasonic sensors: 6 each in the front and rear bumpers - 360° camera: four networked cameras, display on the media display, trailer mode - Active Parking Assist PARKTRONIC: detects parking spaces, assisted parking, assisted exiting, visual and acoustic warning of detected obstacles, display of camera and ultrasonic data on the central display, button for Active Parking Assist with PARKTRONIC - cross traffic warning - maneuvering brake - drive-away assist)
- Paint finish: Metallic
- Radio accessories: Pre-installation for MBUX Entertainment
- Radio accessories: Sound personalization
- Sunroof: Panoramic sunroof (large glass module made of heat-insulating safety glass - mesh wind deflector in the front area - electric sunshade with one-touch operation - comprehensive protection concept: anti-pinch protection, automatic rain closing, automatic closing when the recirculation function is activated, PRE-SAFE closing function (only in conjunction with PRE-SAFE system))
- Towbar with ESP trailer stabilization
- Wheels: 48.3 cm (19") light alloy wheels in 5-spoke design (aerodynamically optimized, painted black and polished with front axle: 235/55 R 19 on 8.0 J x 19 ET 32.5, rear axle: 255/50 R 19 on 9.0 J x 19 ET 30)
- Airbag: Side airbags in the rear
- Cargo net (This feature protects you from loose items in the luggage compartment. The cargo net is very easy to use. You can attach or remove it in just a few steps.)
- Digital Light (HD system with projection module - MULTIBEAM LED background module - Topography compensation keeps the beam range as constant as possible even with changes in altitude - Adaptive Highbeam Assist Plus - ULTRA RANGE highbeam - Active cornering light - Extended fog light, cornering light, country road light, city light, bad weather light, motorway light and motorway high beam - Cornering light with roundabout and intersection function - Off-road light - Adaptive full-LED taillights)
- GUARD 360° Vehicle Protection Plus (Anti-theft alarm system - Tow-away protection with visual and audible warning in case of detected change in position - Audible alarm - Interior monitoring (triggers upon movement inside the vehicle) - Assistance with vehicle theft (theft assistance), free of charge for 3 years from activation - Emergency key deactivation, free of charge for 3 years from activation - GUARD 360° label on the front side windows - Collision detection, free of charge for 3 years from activation)
- Package: Driving Assistance Package Plus (Active Distance Assist DISTRONIC, Active Speed Limit Assist, Extended Automatic Restart, Route-Based Speed Adaptation with Traffic Jam Definition, Active Steering Assist, Active Lane Change Assist, Active Emergency Stop Assist with SOS Radio, Emergency Lane Radio, Active Brake Assist, Turn and Intersection Radio, Traffic Jam Emergency Brake Radio, Evasive Steering Assist, Active Lane Keeping Assist, Active Blind Spot Assist, Exit Warning Radio, PRE-SAFE PLUS Pedestrian Warning Function, Traffic Sign Assist, Active Traffic Jam Assist, PRE-SAFE Impulse Side)
- Package: Winter Package (heated steering wheel - heated windshield washer system)
- Radio accessories: Burmester 3D surround sound system (15 powerful speakers - DSP amplifier with a total output of 710 W (2 x 120 watts, 7 x 50 watts, 6 x 20 watts) - 2 broadband speakers in the front for 3D sound - Frontbass technology with woofers integrated into the body shell - Sound optimization for the front, rear or all seats - 2 sound presets: "Pure" and "3D Sound" - Equalizer function for adjusting bass, midrange and treble - Noise cancellation (VNC))
- Trailer maneuvering assistant



## Brief expert findings

Documents submitted	At the time of the inspection, the vehicle registration certificate Part 2 (title) was available, but the vehicle registration certificate Part 1 (document) was not. (Copy)
VIN comparison	The vehicle identification number (VIN) was read from the vehicle and its conformity with the submitted documents was confirmed by the undersigned during the inspection.
Inspection	The inspection conditions were sufficient for the assessment of the vehicle. Lifting equipment and/or a pit were available for examining the vehicle.
Test drive	No test drive/shunting maneuver was carried out during the inspection of the vehicle.
Engine function test	An engine test run was performed.

## Value reducing factors

No.	Component group	Description
1	Door - rear right side	Door - dent(s) - Smooth repair work
2	Door - front left side	Door - dent(s) - Smooth repair work
3	Door - front right side	Door handle - outside - Scratch(es) - Paint
4	Vehicle glazing	Windscreen - Stone chips - Replace

## Wear and tear

No.	Component group	Description
1	Seat - front	Backrest cover - right side (Druckstelle) - No deduction
2	Bonnet	Bonnet - Stone chips - No deduction
3	Front bumper	Front bumper - Stone chips - No deduction
4	Door - rear right side	Door edge - Scratch(es) - No deduction

The vehicle shows signs of wear and tear commensurate with its age and use.

## Order/Scope of Order

An order was placed to prepare a sales report for the described vehicle. This report includes the following:

- Description of key vehicle information
- Documentation of equipment features  
(*Delivery by third-party service providers*)
- Documentation of damage, defects, missing parts
- Documentation of prior damage, unrepaired prior damage, repainting
- A brief visual or functional inspection of the equipment details, if possible.  
(*Functional testing of driver assistance systems is not included in the scope of services!*)
- a photographic documentation of the vehicle



## Basis for the order

This product is based on the guidelines for vehicle returns and valuations published by Alphabet Fleet GmbH. The expert makes the specific findings in each individual case objectively, within the framework of the prescribed standards, based on their own expertise.

The vehicle inspection takes place in a fully assembled, unassembled state.

Damage or defects that can only be detected during disassembly/diagnostic work or through further investigation remain within the realm of prognostic risk. An increased risk exists due to concealed defects caused by fraudulent misrepresentation and which were not identifiable by the expert.

Damage or defects resulting from normal use or wear and tear of the vehicle will be accepted in accordance with the applicable standard.

There was no explicit identification or monetary consideration of the expected features within the product.

Features which, in their nature and extent, slightly exceed normal use but do not constitute unacceptable damage, will be documented and indicated as signs of wear, if applicable.

Damage or defects that, according to the applicable standard, can no longer be attributed to normal use or wear and tear are listed under "Value Reducing Factors" in the product description.

Depending on the product specification, a monetary ID can be provided. If this takes place, the costs can be 100% d or pro rata depending on the vehicle's age and mileage.

## Previous damages

No apparent prior damage that had been repaired could be found on the vehicle.

## Comments

Der beiliegende Allwetterradsatz ist nicht Bestandteil der Ausstattung.



Figure 1: Diagonal front (left)



Figure 2: Diagonal front (right)



Figure 3: Diagonal rear (left)



Figure 4: Diagonal rear (right)

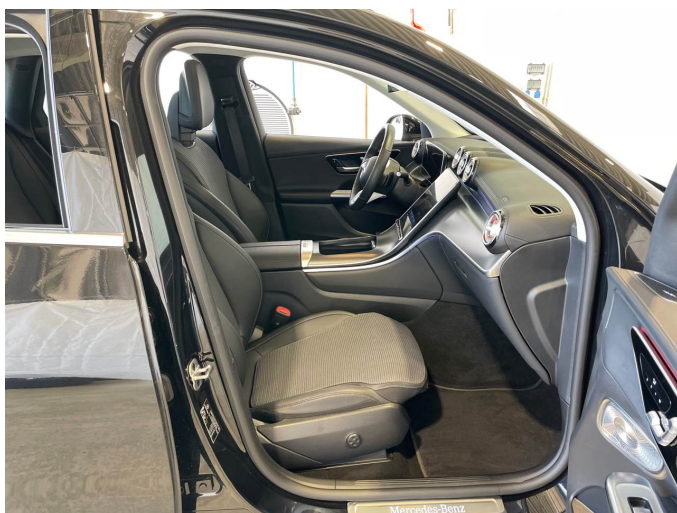


Figure 5: Interior - front

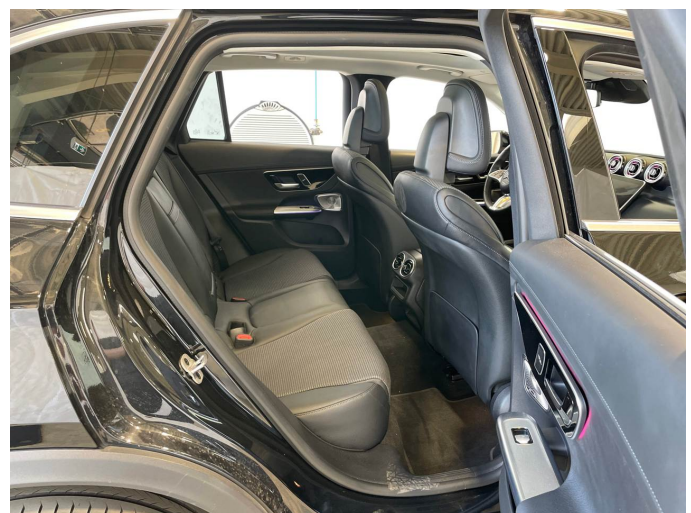


Figure 6: Interior - rear



Figure 7: Instrument cluster



Figure 8: Instrument panel



Figure 9: Interior 360° view



Figure 10: Cargo area



Figure 11: VIN



Figure 12: Mounted tyres



Figure 13: Documents



Figure 14: Additional tyres

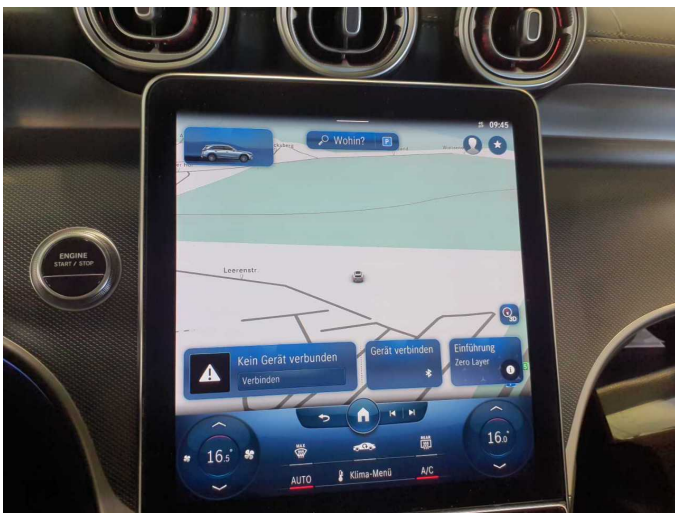


Figure 15: Navigation



Figure 16: Misc.

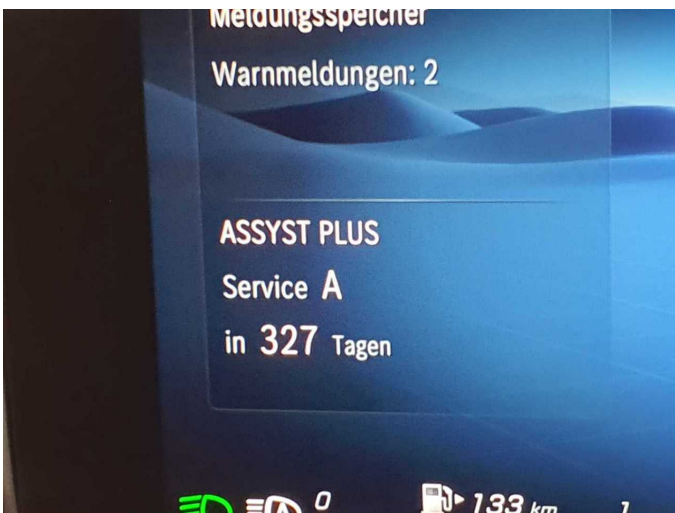


Figure 17: Misc.



Figure 18: Misc.



Figure 19: Misc.



Figure 20: Misc.



Figure 21: Misc.



Figure 22: Misc.



Figure 23: Misc.



Figure 24: Misc.



Figure 25: Misc.



Figure 26: Misc.



Figure 27: Misc.



Figure 28: Misc.



Figure 29: Misc.



Figure 30: Misc.



Figure 31: Misc.



Figure 32: Misc.



Figure 33: Misc.



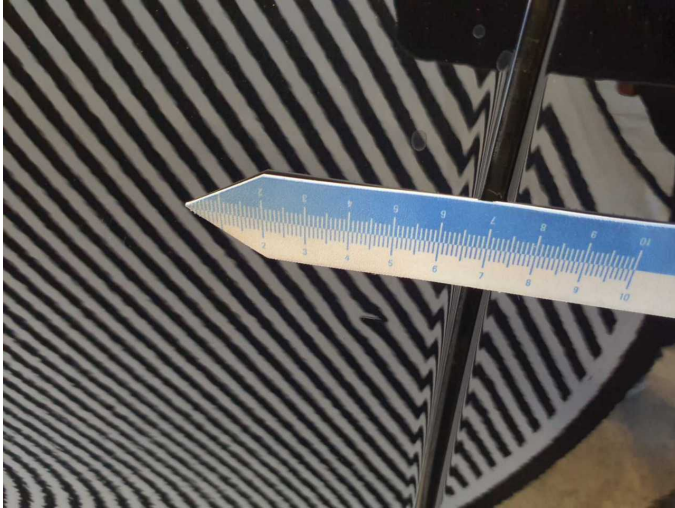
Damage 1: Door - rear right side: Door - dent(s) - Smooth repair work



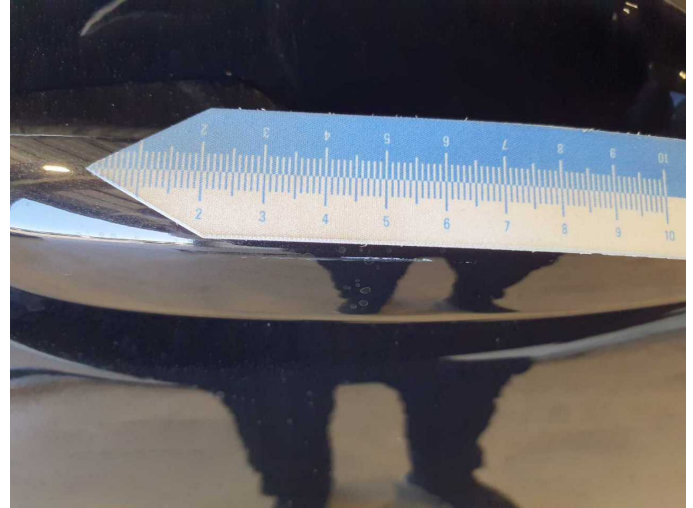
Damage 1: Door - rear right side: Door - dent(s) - Smooth repair work



Damage 2: Door - front left side: Door - dent(s) - Smooth repair work



**Damage 2:** Door - front left side: Door - dent(s) - Smooth repair work



**Damage 3:** Door - front right side: Door handle - outside - Scratch(es) - Paint



**Damage 3:** Door - front right side: Door handle - outside - Scratch(es) - Paint



**Damage 4:** Vehicle glazing: Windscreen - Stone chips - Replace



**Damage 4:** Vehicle glazing: Windscreen - Stone chips - Replace