

## Expertise

Protocol number: 46182040  
Order No. / Reference: 26520481  
Inspection date: 24 Jun 2026

Manufacturer: Mercedes-Benz

Model: C 200 d T 9G-TRONIC

VIN: W1KAH0DB4PF090985



### Vehicle details

#### Manufacturer / Type / Model / Equipment

Mercedes-Benz C 200 d T 9G-TRONIC

**Vehicle Identification number** W1KAH0DB4PF090985

**Mileage (Read)** 97,177 km

**First registration** 20 Feb 2023

**Number of holders** 1

**Power / Engine displacement** 120 kw / 1,993 ccm

**Fuel type / Cylinder** Hybrid Diesel / E / 4

**Gearbox / Number of gears** Automatic / 9

**Type of drive** Rear drive

**Type of vehicle** Station wagon

**Colour / colour code** Schwarz

**Doors / Seats** 5 / 5

**Upholstery type** Cloth

**Colour of upholstery** Black-Anthracite



## Vehicle details

|                                                  |                              |                                |                                                            |
|--------------------------------------------------|------------------------------|--------------------------------|------------------------------------------------------------|
| <b>Maintenance booklet / proof</b>               | digital proof / complete     | <b>Next maintenance in</b>     | 117 Tag(e)                                                 |
| <b>Last service on / at</b>                      | 09/2025 at 77,959 km         |                                |                                                            |
| <b>Key is / should be</b>                        | 2 / 2                        | <b>FZG documents</b>           | ZB#2 (B) was available (copy), ZB#1 (S) was not available. |
|                                                  |                              | <b>Letter No.</b>              | GN013403                                                   |
| <b>Previous damage / Accident</b>                | Detectable                   | <b>Repainting</b>              | None detectable                                            |
| <b>Inspection conditions</b>                     | sufficient                   | <b>Lifting equipment / pit</b> | yes                                                        |
| <b>Test drive</b>                                | Not performed                | <b>Engine function test</b>    | Performed                                                  |
| <b>Manufacturer key number/ type code number</b> | 2222 / BDF 00145             |                                |                                                            |
| <b>Emission standard</b>                         | EURO6;WLTP;AP;PI/CI; M, N1 I | <b>fine dust sticker</b>       |                                                            |
| <b>Permitted total weight</b>                    | 2,400 kg                     | <b>Empty weight</b>            |                                                            |

## Tyres

### Mounted tyres

| #  | Tyre size      | Type of tyre                | Manufacturer | Tread depth |
|----|----------------|-----------------------------|--------------|-------------|
| 1) | 225/45 R18 95Y | Summer tyres on Light alloy | Pirelli      | 3mm / 3mm   |
| 2) | 245/40 R18 97Y | Summer tyres on Light alloy | Continental  | 3mm / 3mm   |

### Additional tyres

| #  | Tyre size      | Type of tyre                | Manufacturer | Tread depth |
|----|----------------|-----------------------------|--------------|-------------|
| 1) | 225/50 R17 98H | Winter tyres on Light alloy | Dunlop       | 5mm / 5mm   |
| 2) | 225/50 R17 98H | Winter tyres on Light alloy | Dunlop       | 5mm / 5mm   |

**Legend: Tread depth information for the left tire is listed first, for the right tire it is listed second on the axle in the direction of travel.**



## Equipment

### Standard equipment

- Airbag for driver and front passenger
- Airbag: Center airbag
- Airbag: Windowbag for driver and front passenger
- Basic services
- Brake assist, active
- Diesel particulate filter
- DYNAMIC SELECT
- ECO start/stop function
- Chassis: AGILITY CONTROL chassis with selective damping system and lowered suspension
- Velour floor mats
- Transmission: 9-speed automatic, 9G-TRONIC
- Rear bumper with diffuser-look insert, black grained
- Interior headliner fabric crystal grey
- KEYLESS-GO start function
- THERMATIC automatic climate control with 1 climate zone
- Front headrests
- Cargo area cover including EASY-PACK safety net
- Steering wheel: Multifunction sports steering wheel in leather
- Package: Storage
- Upholstery: Fabric Tandel
- Radio: MBUX
- Radio accessories: Communication module (LTE) for using Mercedes me connect services
- Remote Services Plus
- Power steering
- Seats: Front seats mechanically adjustable
- Cruise control
- Electronic immobilizer
- Decorative elements, base foil, instrument panel

### Extra equipment

- Package: AVANTGARDE Exterior (radiator grille with integrated Mercedes star and a chrome-plated louvre, radiator grille frame in chrome - 43.2 cm (17") 5-spoke alloy wheels, high-gloss black paint and gloss coating, 225/50 R 17 on 7 J x 17 ET 44.5 - Dynamic front bumper with centrally positioned trim strip in high-gloss chrome and diamond-pattern air intakes in black. - AGILITY CONTROL suspension with 15 mm lowering and selective damping system. - Strip on the rear side windows in high-gloss black.)
- Radio accessories: Advanced sound system (with 9 speakers and 225 watts system power)
- Heat-insulating dark tinted glass

- Airbag: Automatic passenger airbag deactivation
- Airbag: Side airbag for driver and front passenger
- Left and right exterior mirrors are heated and electrically adjustable
- black roof rails
- Double cup holder at the front
- EASY-PACK tailgate
- Electronic Stability Program (ESP)
- Electric windows (4-way)
- Front bumper painted in body color
- Speed Limit Assistant
- rear window wiper
- Heated rear window
- ISOFIX child seat attachment with top tether in the rear
- Mechanical child safety lock for the rear doors
- Rear headrests (3)
- Paint finish: Solid
- LED High Performance Headlights
- Mercedes-Benz emergency call system
- Center console in high-gloss black
- Package: Interior lighting package
- Radio: Extended MBUX functions
- Radio accessories: Digital radio (DAB)
- Radio accessories: Central display
- Tire pressure monitoring system (TPMS)
- Windscreen wipers with rain sensor
- Seats: Rear seat backrests foldable
- Lane Keeping Assist, active
- High-visibility vest for drivers
- Central locking with remote control

- Package: Business (Avant. or AMG Line Ext) DB2
- Package: Night (for T-Model with Avantgarde exterior) (Radiator grille: louvers in high-gloss black and trim in glossy chrome (17") 5-spoke design light-alloy wheels, black painted and diamond-turned with 225/50 R17 tires on 7Jx17 ET44, 5 Front apron with trim (wing) in high-gloss black Rear bumper with trim (wing) in high-gloss black Belt trim strip and window surrounds in high-gloss black Exterior mirror housings painted in high-gloss black Heat-insulating dark tinted glass at the rear (from the B-pillar) Roof rails in black)
- Wheels: 45.7 cm (18") light alloy wheels in 5-twin-spoke design (black painted and polished with front axle 225/45 R 18 on 7.5 J x 18 ET 40, rear axle 245/40 R 18 on 8.5 J x 18 ET 52)



## Brief expert findings

|                      |                                                                                                                                                                              |
|----------------------|------------------------------------------------------------------------------------------------------------------------------------------------------------------------------|
| Documents submitted  | At the time of the inspection, the vehicle registration certificate Part 2 (title) was available, but the vehicle registration certificate Part 1 (document) was not. (Copy) |
| VIN comparison       | The vehicle identification number (VIN) was read from the vehicle and its conformity with the submitted documents was confirmed by the undersigned during the inspection.    |
| Inspection           | The inspection conditions were sufficient for the assessment of the vehicle.<br>Lifting equipment and/or a pit were available for examining the vehicle.                     |
| Test drive           | No test drive/shunting maneuver was carried out during the inspection of the vehicle.                                                                                        |
| Engine function test | An engine test run was performed.                                                                                                                                            |

## Value reducing factors

| No. | Component group              | Description                                             |
|-----|------------------------------|---------------------------------------------------------|
| 1   | Side panel - rear left side  | Side panel - dent(s) - Smooth repair work               |
| 2   | Rear bumper                  | Rear bumper - Scratch(es) - Smart repair                |
| 3   | Seat - rear                  | Back seat - Porous / cracked - Smart repair             |
| 4   | Front bumper                 | Front bumper - Scratch(es) - Smart repair               |
| 5   | Side panel - rear right side | Side panel - Dent / paintcoat damage - Repair and paint |
| 6   | Wheel / tyres                | Alloy rim - rear right side - Scratched - Replace       |
| 7   | Boot lid / rear door         | Boot lid - Deformed - Repair and paint                  |

## Wear and tear

| No. | Component group | Description                                    |
|-----|-----------------|------------------------------------------------|
| 1   | Bonnet          | Bonnet - Stone chips - No deduction            |
| 2   | Vehicle glazing | Windscreen - Stone chips - No deduction        |
| 3   | Body            | Underbody panelling - Scratched - No deduction |

The vehicle shows signs of wear and tear commensurate with its age and use.

## Previous damages

| No. | Previous damage                    | Extent of damage (Net) |
|-----|------------------------------------|------------------------|
| 1   | Rear, Provided by user / customer  | 768,03 €               |
| 2   | Front, Provided by user / customer | 2.286,18 €             |
| 3   | Rear, Provided by user / customer  | 3.183,65 €             |

## Order/Scope of Order

An order was placed to prepare a sales report for the described vehicle. This report includes the following:

- Description of key vehicle information
- Documentation of equipment features  
(*Delivery by third-party service providers*)
- Documentation of damage, defects, missing parts
- Documentation of prior damage, unrepaired prior damage, repainting
- A brief visual or functional inspection of the equipment details, if possible.  
(*Functional testing of driver assistance systems is not included in the scope of services!*)
- a photographic documentation of the vehicle



## Basis for the order

This product is based on the guidelines for vehicle returns and valuations published by Alphabet Fleet GmbH. The expert makes the specific findings in each individual case objectively, within the framework of the prescribed standards, based on their own expertise.

The vehicle inspection takes place in a fully assembled, unassembled state.

Damage or defects that can only be detected during disassembly/diagnostic work or through further investigation remain within the realm of prognostic risk. An increased risk exists due to concealed defects caused by fraudulent misrepresentation and which were not identifiable by the expert.

Damage or defects resulting from normal use or wear and tear of the vehicle will be accepted in accordance with the applicable standard.

There was no explicit identification or monetary consideration of the expected features within the product.

Features which, in their nature and extent, slightly exceed normal use but do not constitute unacceptable damage, will be documented and indicated as signs of wear, if applicable.

Damage or defects that, according to the applicable standard, can no longer be attributed to normal use or wear and tear are listed under "Value Reducing Factors" in the product description.

Depending on the product specification, a monetary ID can be provided. If this takes place, the costs can be 100% d or pro rata depending on the vehicle's age and mileage.

## Previous damages

According to available information previous damages were repaired at the vehicle. Traces of repairs, which allow conclusions about the area of repair, were not recognizable during the inspection.



Figure 1: Diagonal front (left)



Figure 2: Diagonal front (right)



Figure 3: Diagonal rear (left)



Figure 4: Diagonal rear (right)

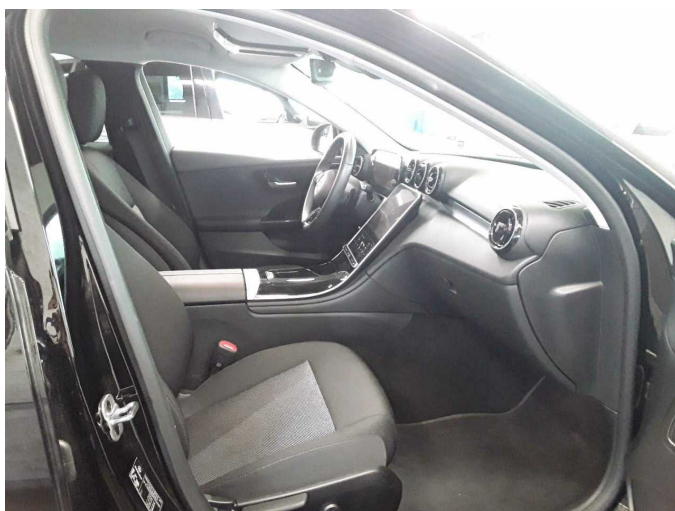


Figure 5: Interior - front



Figure 6: Interior - rear



Figure 7: Instrument cluster



Figure 8: Instrument panel



Figure 9: Interior 360° view



Figure 10: Cargo area

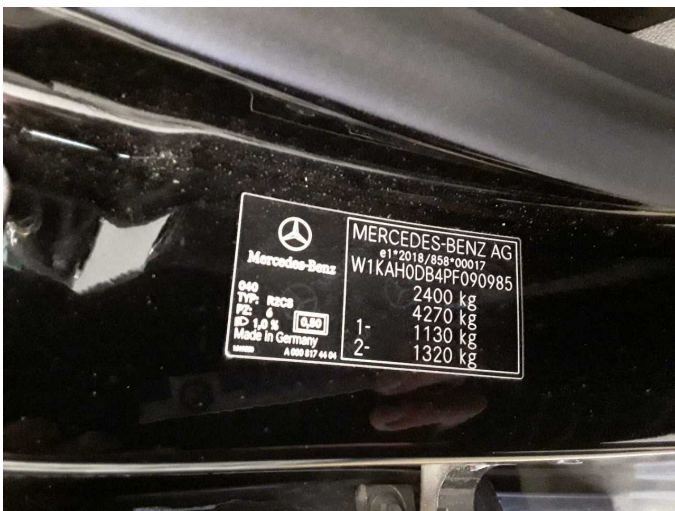


Figure 11: VIN



Figure 12: Mounted tyres



Figure 13: Mounted tyres



Figure 14: Documents



Figure 15: Additional tyres



Figure 16: Navigation

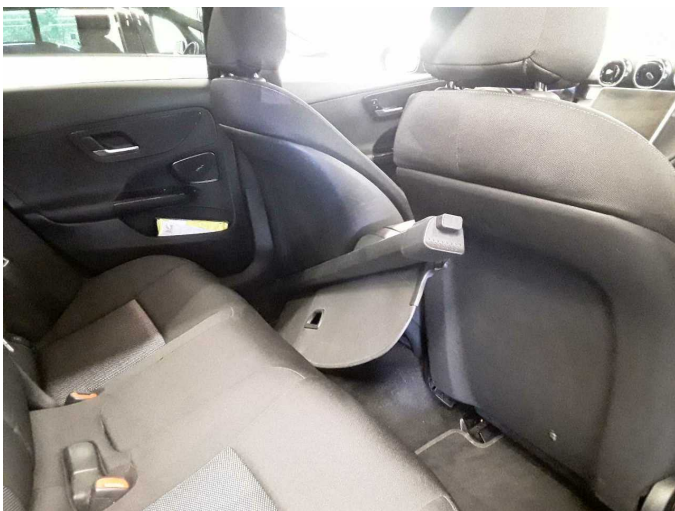


Figure 17: Misc.

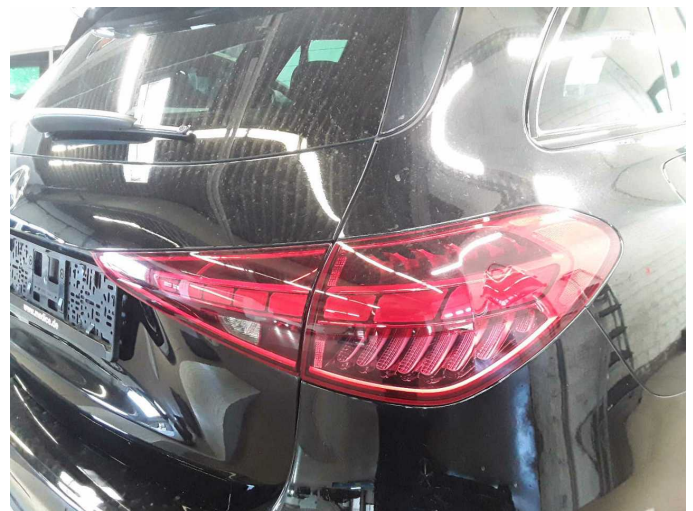


Figure 18: Misc.



Figure 19: Misc.



Figure 20: Misc.



Figure 21: Misc.



Figure 22: Misc.



Figure 23: Misc.



Figure 24: Misc.



Figure 25: Misc.



Figure 26: Misc.



Figure 27: Misc.



Figure 28: Misc.



Figure 29: Misc.



Figure 30: Misc.

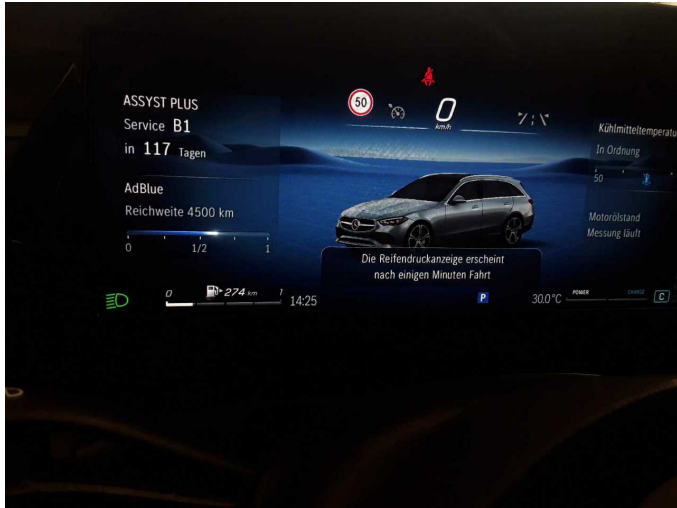
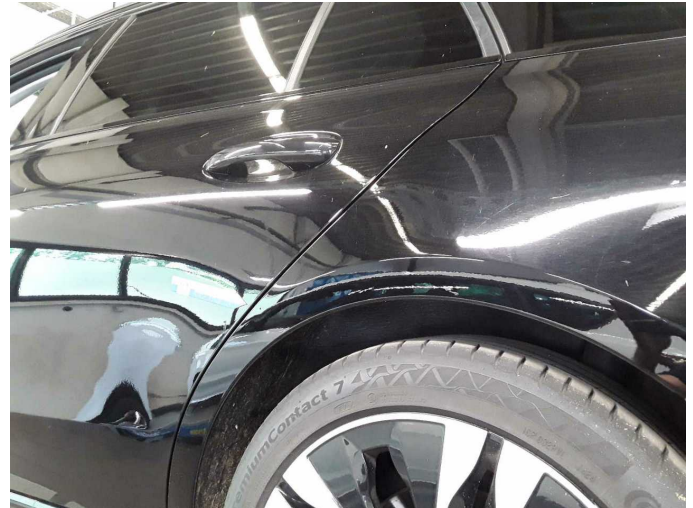


Figure 31: Misc.



Damage 1: Side panel - rear left side: Side panel - dent(s) - Smooth repair work



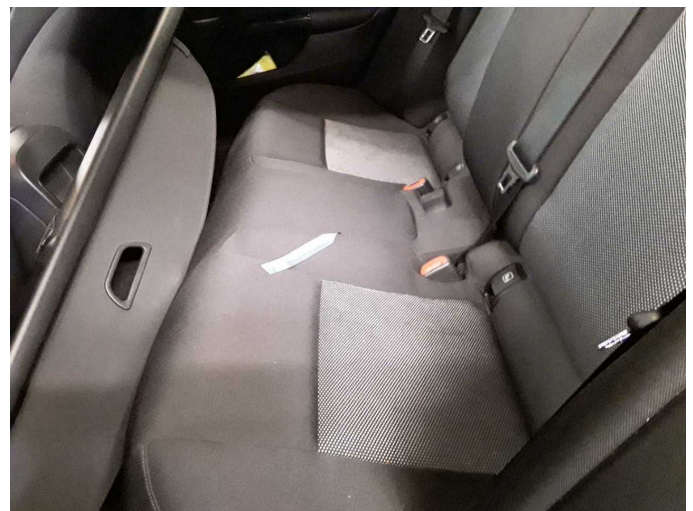
Damage 1: Side panel - rear left side: Side panel - dent(s) - Smooth repair work



Damage 2: Rear bumper: Rear bumper - Scratch(es) - Smart repair



Damage 2: Rear bumper: Rear bumper - Scratch(es) - Smart repair



Damage 3: Seat - rear: Back seat - Porous / cracked - Smart repair



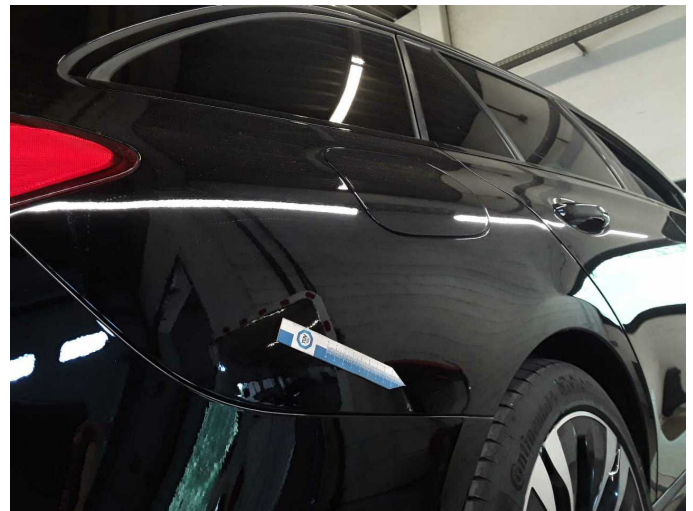
**Damage 3:** Seat - rear: Back seat - Porous / cracked - Smart repair



**Damage 4:** Front bumper: Front bumper - Scratch(es) - Smart repair



**Damage 4:** Front bumper: Front bumper - Scratch(es) - Smart repair



**Damage 5:** Side panel - rear right side: Side panel - Dent / paintcoat damage - Repair and paint



**Damage 5:** Side panel - rear right side: Side panel - Dent / paintcoat damage - Repair and paint



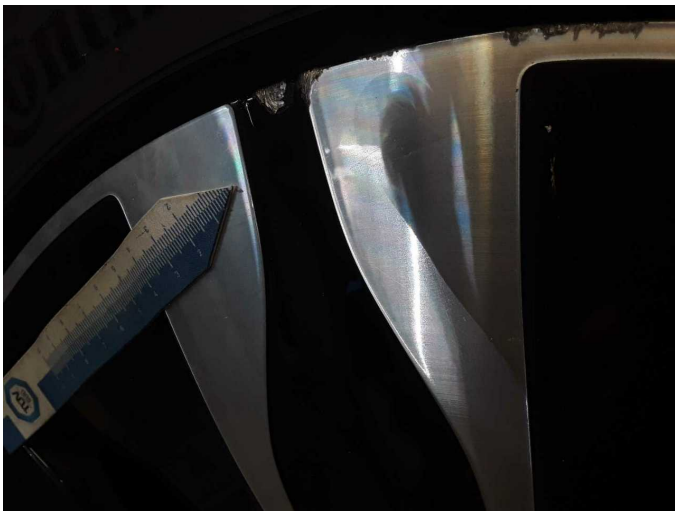
**Damage 5:** Side panel - rear right side: Side panel - Dent / paintcoat damage - Repair and paint



**Damage 6:** Wheel / tyres: Alloy rim - rear right side - Scratched - Replace



**Damage 6:** Wheel / tyres: Alloy rim - rear right side - Scratched - Replace



**Damage 6:** Wheel / tyres: Alloy rim - rear right side - Scratched - Replace



**Damage 7:** Boot lid / rear door: Boot lid - Deformed - Repair and paint



**Damage 7:** Boot lid / rear door: Boot lid - Deformed - Repair and paint



**Damage 7:** Boot lid / rear door: Boot lid - Deformed - Repair and paint



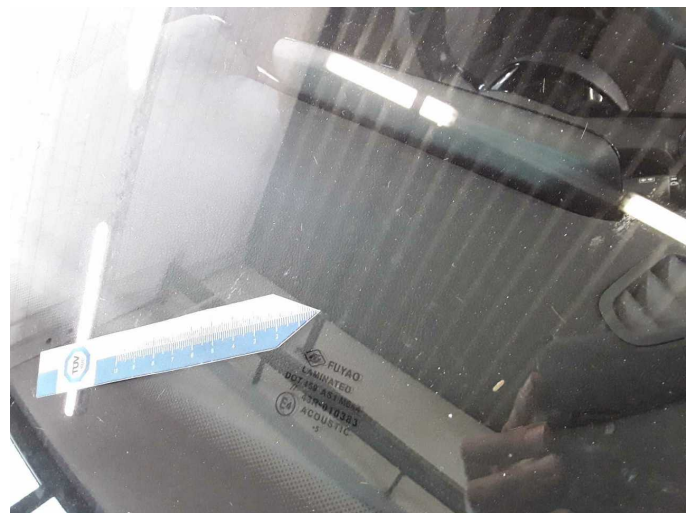
**Wear and tear 1:** Bonnet: Bonnet - Stone chips - No deduction



**Wear and tear 1:** Bonnet: Bonnet - Stone chips - No deduction



**Wear and tear 2:** Vehicle glazing: Windscreen - Stone chips - No deduction



**Wear and tear 2:** Vehicle glazing: Windscreen - Stone chips - No deduction



**Wear and tear 3:** Body: Underbody panelling - Scratched - No deduction



# Wartungshistorie

(gemäß Auftraggeber Informationen)

Fahrgestellnummer: W1KAH0DB4PF090985

Hersteller / Modell: MERCEDES-BENZ MERCEDES-BENZ C 200 d T 9G-TRONIC

| Datum      | KM-Stand | Beschreibung                                           |
|------------|----------|--------------------------------------------------------|
| 04.03.2026 | 90.616   | HU + AU; Reparatur Sonstiges; Systemtest/Eigendiagnose |
| 04.09.2025 | 77.959   | Regelwartungsdienst                                    |
| 25.11.2024 | 52.752   | Regelwartungsdienst                                    |
| 20.02.2024 | 25.215   | Regelwartungsdienst                                    |