

Expertise

Protocol number: 46191417
Order No. / Reference: 26152411
Inspection date: 21 May 2026

Manufacturer: Mercedes-Benz

Model: Vito 116 CDI Lang HA Aut. PRO

VIN: W1VVLBEZ0T4546660



Vehicle details

Manufacturer / Type / Model / Equipment

Mercedes-Benz Vito 116 CDI Lang HA Aut. PRO

Vehicle Identification number W1VVLBEZ0T4546660

Mileage (Read) 12,433 km

First registration 31 Jul 2025

Number of holders 1

Power / Engine displacement 120 kw / 1,950 ccm

Fuel type / Cylinder Diesel / 4

Gearbox / Number of gears Automatic / 9

Type of drive Rear drive

Type of vehicle Van

Colour / colour code Alpingrau

Doors / Seats 4 / 3

Upholstery type Cloth

Colour of upholstery Black-Anthracite

Type of use rental car



Vehicle details

Maintenance booklet / proof	Non-existent	Next maintenance in	639 Tag(e)
Key is / should be	2 / 2	FZG documents	ZB#2 (B) was available (copy), ZB#1 (S) was not available.
		Letter No.	HN427657
Previous damage / Accident	None detectable	Repainting	None detectable
Inspection conditions	sufficient	Lifting equipment / pit	yes
Test drive	Not performed	Engine function test	Performed
Manufacturer key number/ type code number	2222 / BBJ 11512		
Emission standard	EURO6;WLTP;EB;PI/CI;M, N1, N2	fine dust sticker	
Permitted total weight	2,800 kg	Empty weight	

Tyres

Mounted tyres

#	Tyre size	Type of tyre	Manufacturer	Tread depth
1)	225/55 R17 109H	All-season tyres on Steel rim with wheel cover	Goodyear	5mm / 5mm
2)	225/55 R17 109H	All-season tyres on Steel rim with wheel cover	Goodyear	6mm / 6mm

Legend: Tread depth information for the left tire is listed first, for the right tire it is listed second on the axle in the direction of travel.



Equipment

Standard equipment

- Screw-in towing eye front/rear
- Driver's side airbag
- ATTENTION ASSIST
- Outdoor temperature display
- Battery: fleece battery 12 V / 92 Ah
- Hill start assist
- third brake light
- COC documents
- Diesel particulate filter
- Electrical components for trailer socket
- Driving light assistant
- Chassis: Standard chassis
- electric parking brake
- Generator management
- Transmission: 9G-TRONIC
- Seatbelt warning device for front passenger seat
- Lockable glove box
- Boot lid
- Interior trim of cargo area, side
- Tempmatic controlled air conditioning
- Comfort closing
- Headrests (2), front
- Paint finish: Solid color paint
- Steering wheel: Multifunction steering wheel
- Mercedes-Benz emergency call system
- Package: BlueEFFICIENCY
- Upholstery: Caluma fabric, black
- Radio: MBUX multimedia system
- Tires: 225/55R17
- Tires: Summer tires
- Wheels: Premium complete wheel protection
- High-resolution reversing camera with guide lines
- Headlights: halogen technology
- Key: Multi-button remote control
- electromechanical power steering
- Seat: Lumbar support driver's seat
- Seats: Comfort passenger seat
- Seats: Passenger seat cushion depth adjustment
- Lane Keeping Assist active
- 12V socket
- Blind Spot Assist
- Updates to the intelligent speed assistant
- Pre-installation for Remote Services Plus
- ASSYST maintenance interval indicator
- Heat-insulating glass all around
- Registration as a truck
- Passenger side airbag
- Towing capacity 0 kg/lbs
- Electrically adjustable and heated exterior mirrors, left and right
- Fixing points in the roof frame
- Brake assist, active
- Brake lights, adaptive
- Front cupholder
- Electronic tachometer
- Electronic Stability Program (ADAPTIVE ESP) with integrated Anti-lock Braking System (ABS)
- Electric windows, driver/passenger
- Generator 14 V / 250 A
- Speed limit 210 km/h
- Weight variant 2,800 kg
- Seatbelt warning device for driver's seat
- Rear camera not foldable
- HOLD function
- Intelligent speed assistant
- Instrument cluster with color display
- Communication module (LTE) for digital services
- Large fuel tank, approx. 70 liters
- Steering wheel adjustable for tilt and height
- Headlight range control
- Navigation: Navigation pre-installation
- Breakdown management
- Radio: Digital Radio DAB
- Full wheel cover
- Tires: Tires without specified make
- Tire pressure monitoring
- Wheels: Steel rims 6.5 J x 17
- Electric suction fan, power level 5
- Sliding door on the right, cargo/passenger compartment
- Crosswind Assist
- Seat: Lumbar support, passenger seat
- Seats: Driver's seat Plus with flat seat surface
- Seats: Comfort driver's seat
- Seats: Driver's seat cushion depth adjustment
- Start-stop function
- Cruise control
- continuous partition wall
- First aid kit
- Warning triangle
- Immobiliser
- Central locking with radio remote control



Extra equipment

- Airbag: Thorax airbag - Pelvis side airbag for front passenger
- Towbar (detachable ball head)
- Interior trim of cargo area, upper panels
- Navigation
- Tires: All-season tires
- Weld nuts side wall for extensions
- Traffic Sign Assistant
- Airbag: Thorax-pelvis-sidebag for driver
- Towing capacity 2500 kg
- Wooden floor (cargo area)
- LED light strip in the cargo area
- Navigation accessories: Live Traffic Information
- Rear door, double-leaf, 180° opening, without window
- Seats: Passenger seat, two-seater
- Lashing rails on side wall to parapet strap

Brief expert findings

Documents submitted	At the time of the inspection, the vehicle registration certificate Part 2 (title) was available, but the vehicle registration certificate Part 1 (document) was not. (Copy)
VIN comparison	The vehicle identification number (VIN) was read from the vehicle and its conformity with the submitted documents was confirmed by the undersigned during the inspection.
Inspection	The inspection conditions were sufficient for the assessment of the vehicle. Lifting equipment and/or a pit were available for examining the vehicle.
Test drive	No test drive/shunting maneuver was carried out during the inspection of the vehicle.
Engine function test	An engine test run was performed.

Value reducing factors

No.	Component group	Description
1	Seat - front	Seat cover - left side - Soiled - Clean
2	Seat - front	Seat cover - right side - Soiled - Clean
3	Door - front left side	Door edge - Scratch(es) - Smart repair
4	Boot lid / rear door	Boot lid - Scratch(es) - Smart repair
5	Body	B-pillar - left side - Scratch(es) - Smart repair
6	Wheel / tyres	Tyre - front right side - Damaged - Replace
7	Body	Underbody panelling - Broken / torn - Replace
8	Engine	Engine oil sump (Ölstandsensor/Ölqualitätsensor) - Broken / torn - Replace
9	Rear bumper	Rear bumper - Scratched - Replace
10	Front bumper	Front bumper - Scratched - Replace

Wear and tear

No.	Component group	Description
1	Boot lid / rear door	License number - Scratch(es) - No deduction
2	Wing mirror - right side	Mirror housing - Scratch(es) - No deduction
3	Bonnet	Bonnet - dent(s) - No deduction

The vehicle shows signs of wear and tear commensurate with its age and use.

Paint coat thickness measurement

Roof	99 µm	Roof rail - left side	81 µm
Roof rail - right side	98 µm	Boot lid / rear door	100 µm
Mudguard - left side	99 µm	Mudguard - right side	98 µm
Bonnet	99 µm	Side panel - rear left side	111 µm
Side panel - rear right side	110 µm	Door - rear right side	100 µm
Door - front left side	85 µm	Door - front right side	91 µm



Order/Scope of Order

An order was placed to prepare a sales report for the described vehicle. This report includes the following:

- Description of key vehicle information
- Documentation of equipment features
(Delivery by third-party service providers)
- Documentation of damage, defects, missing parts
- Documentation of prior damage, unrepaired prior damage, repainting
- A brief visual or functional inspection of the equipment details, if possible.
(Functional testing of driver assistance systems is not included in the scope of services!)
- a photographic documentation of the vehicle

Basis for the order

This product is based on the guidelines for vehicle returns and valuations of light commercial vehicles published by Alphabet Fleet Management GmbH. The expert makes the specific findings in each individual case objectively, within the framework of the prescribed standards, based on their own expertise.

The vehicle inspection takes place in a fully assembled, unassembled state.

Damage or defects that can only be detected during disassembly/diagnostic work or through further investigation remain within the realm of prognostic risk. An increased risk exists due to concealed defects caused by fraudulent misrepresentation and which were not identifiable by the expert.

Damage or defects resulting from normal use or wear and tear of the vehicle will be accepted in accordance with the applicable standard.

There was no explicit identification or monetary consideration of the expected features within the product.

Features which, in their nature and extent, slightly exceed normal use but do not constitute unacceptable damage, will be documented and indicated as signs of wear, if applicable.

Damage or defects that, according to the applicable standard, can no longer be attributed to normal use or wear and tear are listed under "Value Reducing Factors" in the product description.

Depending on the product specification, a monetary ID can be provided. If this takes place, the costs can be 100% or pro rata depending on the vehicle's age and mileage.

Previous damages

No apparent prior damage that had been repaired could be found on the vehicle.



Figure 1: Diagonal front (left)



Figure 2: Diagonal front (right)



Figure 3: Diagonal rear (left)



Figure 4: Diagonal rear (right)



Figure 5: Interior - front

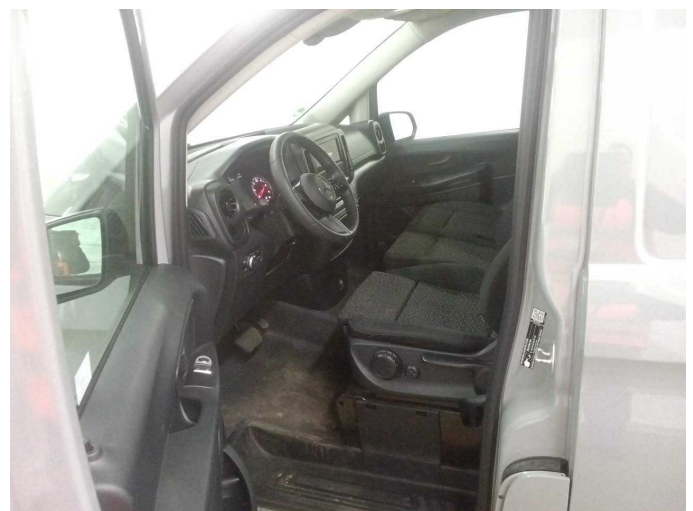


Figure 6: Interior - front



Figure 7: Interior - rear



Figure 8: Instrument cluster



Figure 9: Instrument panel



Figure 10: Instrument panel



Figure 11: Interior 360° view



Figure 12: Cargo area



Figure 13: VIN



Figure 14: Mounted tyres



Figure 15: Mounted tyres



Figure 16: Mounted tyres

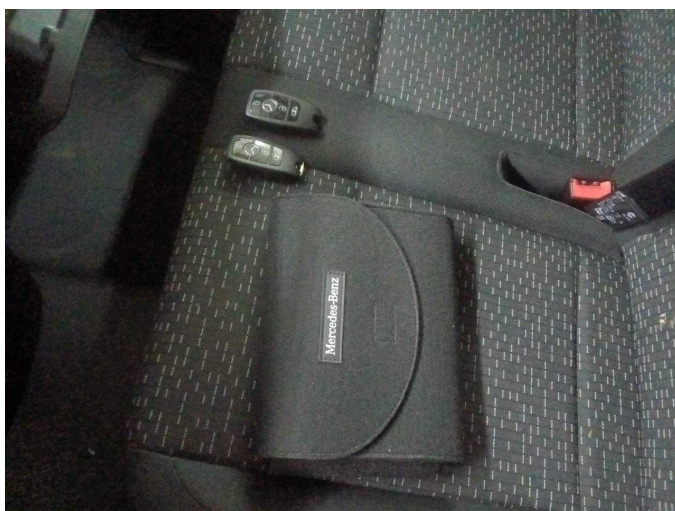


Figure 17: Documents



Figure 18: Navigation



Figure 19: Misc.



Figure 20: Misc.



Figure 21: Misc.



Figure 22: Misc.



Figure 23: Misc.



Figure 24: Misc.



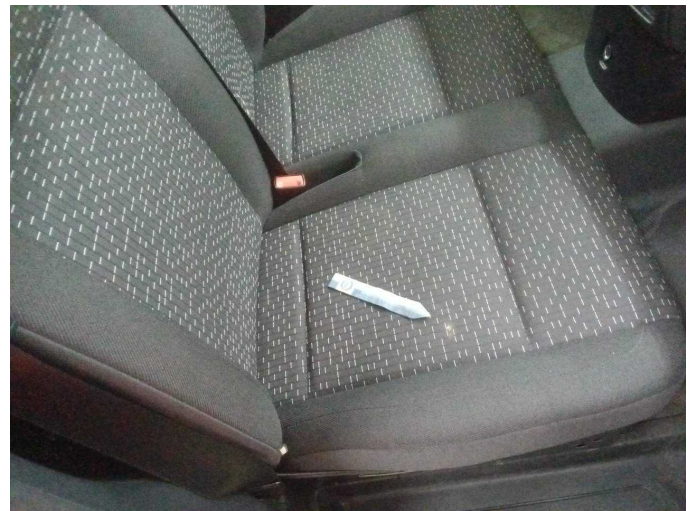
Figure 25: Misc.



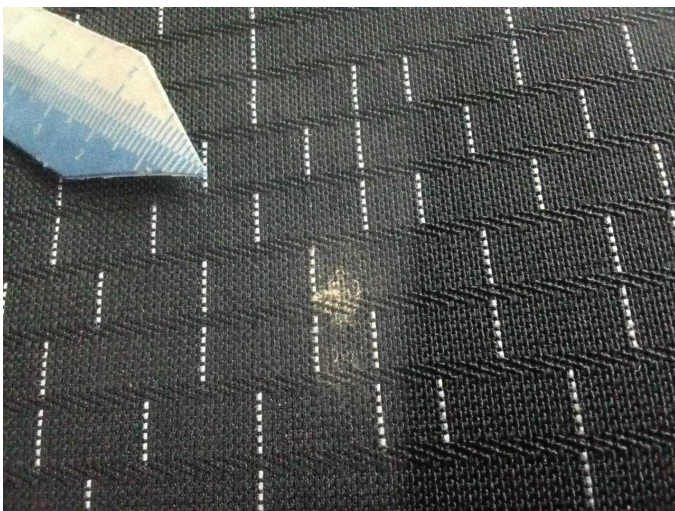
Damage 1: Seat - front: Seat cover - left side - Soiled - Clean



Damage 1: Seat - front: Seat cover - left side - Soiled - Clean



Damage 2: Seat - front: Seat cover - right side - Soiled - Clean



Damage 2: Seat - front: Seat cover - right side - Soiled - Clean



Damage 3: Door - front left side: Door edge - Scratch(es) - Smart repair



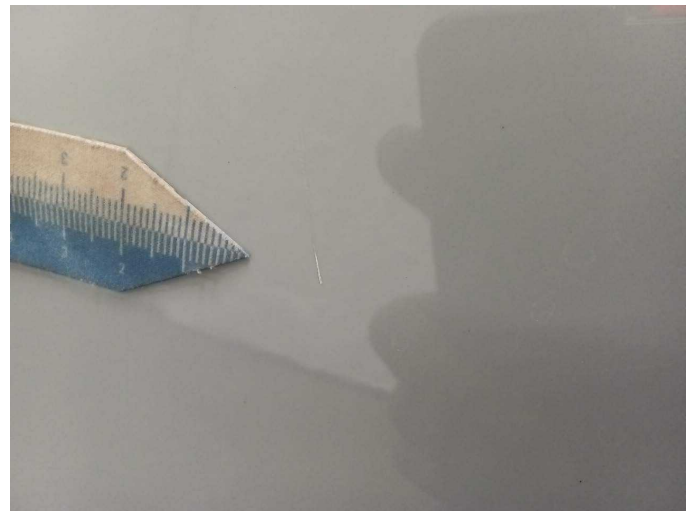
Damage 3: Door - front left side: Door edge - Scratch(es) - Smart repair



Damage 3: Door - front left side: Door edge - Scratch(es) - Smart repair



Damage 4: Boot lid / rear door: Boot lid - Scratch(es) - Smart repair



Damage 4: Boot lid / rear door: Boot lid - Scratch(es) - Smart repair



Damage 5: Body: B-pillar - left side - Scratch(es) - Smart repair



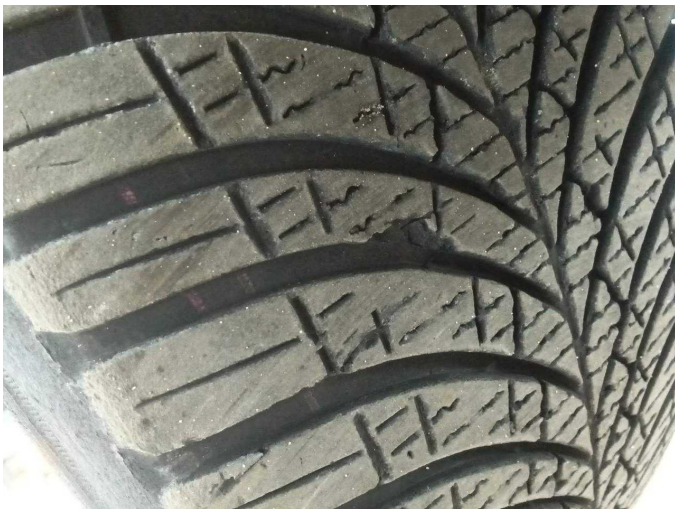
Damage 5: Body: B-pillar - left side - Scratch(es) - Smart repair



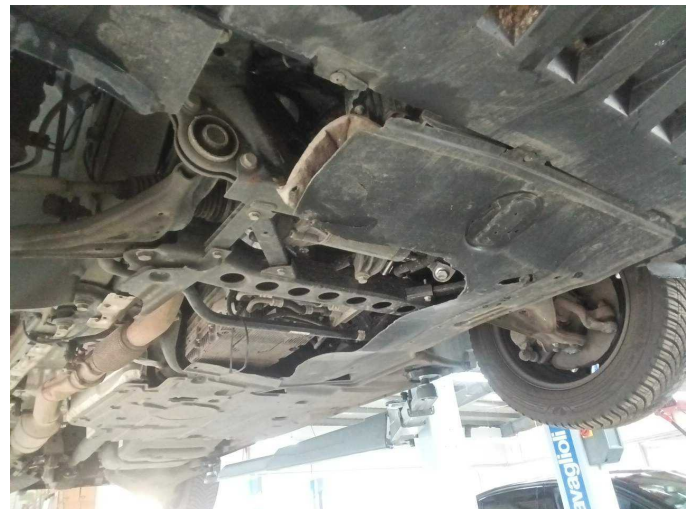
Damage 6: Wheel / tyres: Tyre - front right side - Damaged - Replace



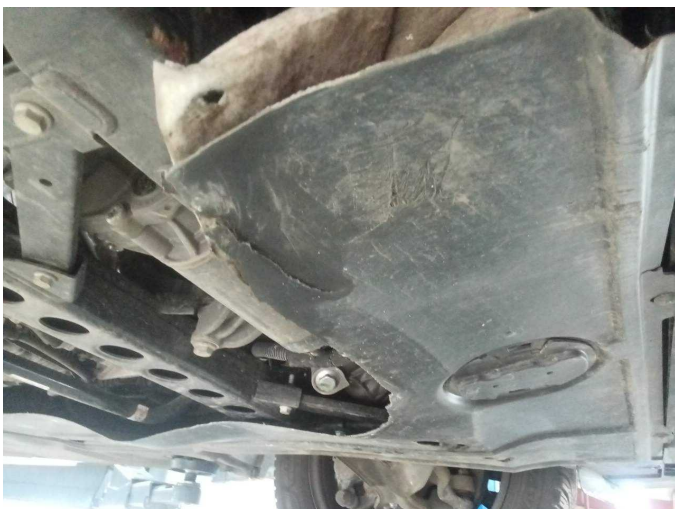
Damage 6: Wheel / tyres: Tyre - front right side - Damaged - Replace



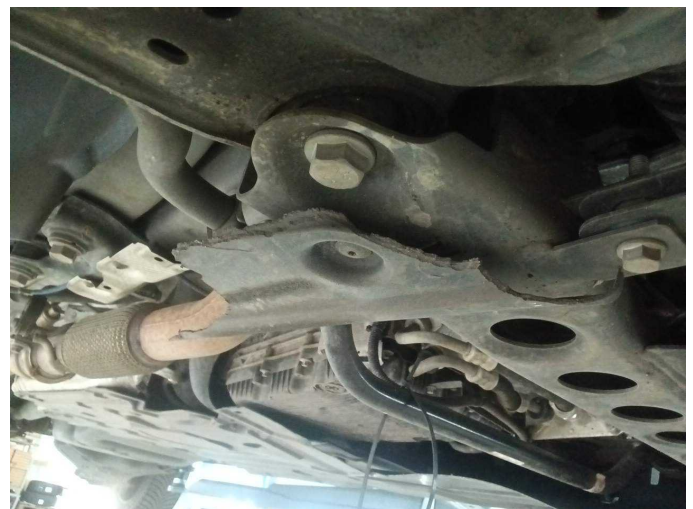
Damage 6: Wheel / tyres: Tyre - front right side - Damaged - Replace



Damage 7: Body: Underbody panelling - Broken / torn - Replace



Damage 7: Body: Underbody panelling - Broken / torn - Replace



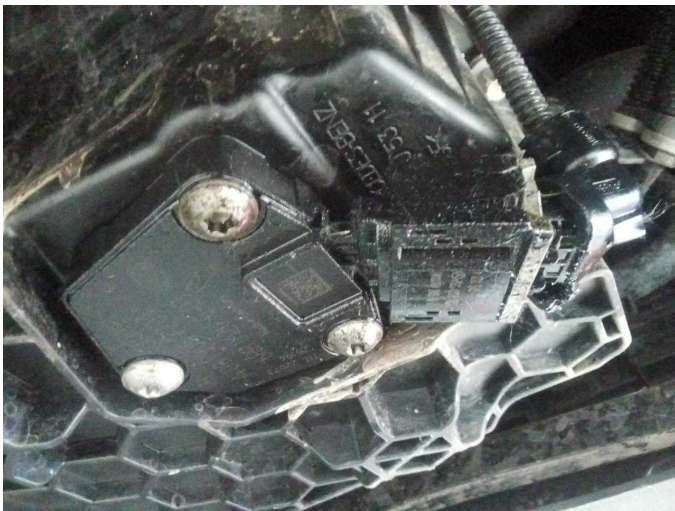
Damage 7: Body: Underbody panelling - Broken / torn - Replace



Damage 8: Engine: Engine oil sump (Ölstandsensord/Ölqualitätsensord) - Broken / torn - Replace



Damage 8: Engine: Engine oil sump (Ölstandsensord/Ölqualitätsensord) - Broken / torn - Replace



Damage 8: Engine: Engine oil sump (Ölstandsensord/Ölqualitätsensord) - Broken / torn - Replace



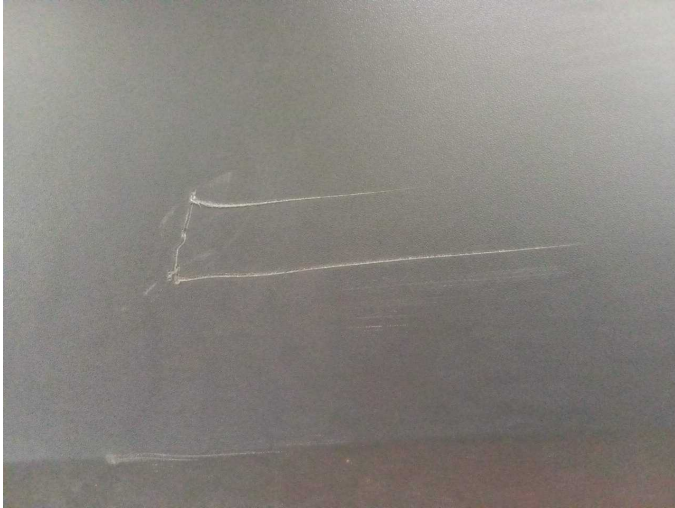
Damage 9: Rear bumper: Rear bumper - Scratched - Replace



Damage 9: Rear bumper: Rear bumper - Scratched - Replace



Damage 9: Rear bumper: Rear bumper - Scratched - Replace



Damage 9: Rear bumper: Rear bumper - Scratched - Replace



Damage 10: Front bumper: Front bumper - Scratched - Replace



Damage 10: Front bumper: Front bumper - Scratched - Replace



Damage 10: Front bumper: Front bumper - Scratched - Replace



Damage 10: Front bumper: Front bumper - Scratched - Replace



Damage 10: Front bumper: Front bumper - Scratched - Replace



Damage 10: Front bumper: Front bumper - Scratched - Replace