

## Expertise

Protocol number: 46334411  
Order No. / Reference: 26560206  
Inspection date: 6 Jul 2026

Manufacturer: Volvo

Model: XC60 T6 AWD Recharge Plus Bright

VIN: LYVUZH1V0PB317998



### Vehicle details

#### Manufacturer / Type / Model / Equipment

Volvo XC60 T6 AWD Recharge Plus Bright

**Vehicle Identification number** LYVUZH1V0PB317998

**Mileage (Read)** 118,497 km

**First registration** 12 May 2023

**Number of holders** 1

**Power / Engine displacement** 186 kw / 1,969 ccm

**Fuel type / Cylinder** Hybr.B/E ext.auf1 / 4

**Gearbox / Number of gears** Automatic / 8

**Type of drive** All-wheel drive

**Type of vehicle** Station wagon

**Colour / colour code** Black Stone

**Doors / Seats** 5 / 5

**Upholstery type** Leather

**Colour of upholstery** Beige



## Vehicle details

<b>Maintenance booklet / proof</b>	digital proof / complete	<b>Next maintenance in</b>	4,070 km
<b>Last service on / at</b>	09/2025 at 92,567 km		
<b>Key is / should be</b>	2 / 2	<b>FZG documents</b>	ZB#2 (B) was available (copy), ZB#1 (S) was not available.
		<b>Letter No.</b>	GS763925
<b>Previous damage / Accident</b>	None detectable	<b>Repainting</b>	Detectable
<b>Inspection conditions</b>	sufficient	<b>Lifting equipment / pit</b>	No
<b>Test drive</b>	Not performed	<b>Engine function test</b>	Performed
<b>Manufacturer key number/ type code number</b>	9101 / BRS 00017		
<b>Emission standard</b>	EURO6;WLTP;AP;PI/CI; M, N1 I	<b>fine dust sticker</b>	
<b>Permitted total weight</b>	2,660 kg	<b>Empty weight</b>	

## Tyres

### Mounted tyres

#	Tyre size	Type of tyre	Manufacturer	Tread depth
1)	235/55 R19 105Y	Summer tyres on Light alloy	Continental	5mm / 5mm
2)	235/55 R19 105Y	Summer tyres on Light alloy	Continental	5mm / 5mm

### Additional tyres

#	Tyre size	Type of tyre	Manufacturer	Tread depth
1)	235/60 R18 107H	Winter tyres on Light alloy	Continental	7mm / 7mm
2)	235/60 R18 107H	Winter tyres on Light alloy	Continental	7mm / 7mm

### Replacement

Typ	Tyre size	Type of tyre	Manufacturer	Tread depth
	Tirefit	Expiration date 01/2027		

**Legend: Tread depth information for the left tire is listed first, for the right tire it is listed second on the axle in the direction of travel.**

TÜV SÜD Auto Partner GmbH  
Wiesenring 2  
04159 Leipzig

Inspection location  
ARS Altmann AG Automobillogistik  
Römerstraße 3  
64560 Riedstadt



## Equipment



## Standard equipment

- ABS - Anti-lock Braking System
- Airbag, driver's knee airbag
- Airbag, side airbags for driver and front passenger and head/shoulder airbags for all occupants
- Aluminum door sill plates with Recharge lettering, front
- Aluminum roof rails (integrated)
- Ambient lighting (Extended interior lighting with: - Ambient lighting front and rear - Exit lights front and rear - Work light on the tailgate - Illuminated door pockets and door openers front and rear - Rear footwell lighting - Rear reading lights)
- Cargo area roller blind
- Charging box under the cargo floor
- Chrome applications in the front bumper
- Chrome applications on the rear of the vehicle
- Chrome trim strip in the door sill area with Recharge lettering
- Chrome window surround
- Deactivation of the high-voltage battery (in case of a collision)
- Digital instrumentation 2nd generation (Full graphic 12.3" driver display (31.2 cm diagonal) with two variable round instruments and information display (e.g. for navigation map view))
- Driver and passenger side airbags with two-stage deployment system
- Electric auxiliary heater with timer
- Electrically folding exterior mirrors
- Electronic Stability Control (ESC)
- Emergency brake lights (brake lights flash rapidly during heavy deceleration; hazard warning lights are automatically activated below 10 km/h)
- Enhanced air quality system with fine dust filtration according to air quality standard PM2.5
- Fog sensor for automatic activation of the defroster function
- Front seat belt height adjustment
- Headrests (5) front and rear
- Heated exterior mirrors and rear window (automatic)
- Hill Descent Control (HDC)
- Illuminated makeup mirror for driver and front passenger
- Immobilizer (deactivation of the high-voltage battery in the event of a collision)
- Intelligent driver information system (delays incoming calls or vehicle information in dangerous situations)
- Interior and exterior mirrors automatically dimming
- ISOFIX mounting for the outer rear seats
- Keyless Drive (electronic access system) (with sensor-controlled tailgate, illuminated door handles and floor lights)
- Lashing eyes in the luggage compartment (foldable)
- Luggage compartment partition net
- On-board computer (with vehicle control functions)
- Acoustic Vehicle Alerting System (AVAS) (Acoustic pedestrian/cyclist protection through artificially generated driving noises in the speed range up to 20 km/h)
- Active safety belts with belt tensioners
- All-wheel drive (AWD) (depending on the driving mode)
- Android infotainment system (9" touchscreen (22.9 cm diagonal) - Bluetooth hands-free system incl. audio streaming - Digital vehicle owner's manual - Digital radio reception (DAB+) - 2 USB-C ports (compatible with Apple iPod/iPhone/iPad))
- Automatic climate control with separate temperature control for driver and front passenger (and additional air vents for the 2nd row of seats (integrated in the B-pillar))
- Automatic emergency braking (emergency braking mechanism after the deployment of the airbags or seatbelt pretensioners to prevent secondary accidents)
- Automatic tailgate (electric)
- Central locking with two remote controls and integrated emergency keys (automatic locking of doors while driving (can be deactivated) - comfort opening/closing of side windows and, if applicable, sunroof via remote control - panic function integrated into the remote control)
- Charging cable Schuko/Type 2 (Mode 2) (7 m length, 1-phase, 10A (for connection to a standard 230-volt household socket))
- Child safety lock for the rear doors (electric)
- CleanZone air quality system with activated carbon filter (automatic recirculation and pre-ventilation of the interior when the vehicle is unlocked)
- Digital Services (Google Services (includes Google Maps, Google Assistant, Google Play Store and unlimited data) - Volvo On Call (includes, among other things, alerting the Volvo On Call service center at the touch of a button and additional convenience services via the Volvo CarsApp))
- Electric parking brake
- Electric windows front and rear (with auto-down and auto-up function)
- Electrically adjustable exterior mirrors
- Electronic differential lock
- First aid kit and warning triangle
- Front center armrest with integrated storage compartment and cup holders
- Full LED headlights "Thor's Hammer" ACTIVE HIGH BEAM (with extended high beam, dynamic cornering light, intelligent high beam assistant with adaptive headlight range control and integrated LED daytime running lights)
- Glazing: Colored glazing
- Hill Start Assist (HSA)
- Interior lighting (headliner, front reading lights, front ambient lighting, front footwell, storage compartment behind center console, glove compartment and luggage compartment)
- Keyless Start (electronic engine start system)
- LED turn signals integrated into the exterior mirrors



- Package: Seat Comfort Package (Electrically adjustable front passenger seat - Electrically adjustable driver's seat with memory function for driver's seat and exterior mirror settings (stored in remote control) - Lumbar support (4-way electrically adjustable) for driver and front passenger seats - Memory function for front passenger seat - Adjustable leg support for driver and front passenger seats)
- Paint finish: Solid
- Passenger side airbag can be deactivated
- Phone: Inductive smartphone charging system (Wirelessly charges smartphones that support the Qi standard on a charging pad)
- Preparation for Trailer Stability Assist (TSA)
- Rain sensor
- Rear view camera
- Roof edge spoiler
- Safety Assistance (Automatic emergency braking system with detection of vehicles, cyclists, pedestrians and large animals including intersection braking assistant and emergency braking assistant for oncoming traffic - Connected Safety - Driver Alert - Attention warning - Distance warning - Variable speed limiter - Cruise control - Lane Keeping Aid (LKA) - Active lane keeping assistant - Oncoming Lane Mitigation - Ready to Drive notification - Road Edge Detection - Road Sign Information (RSI) - Traffic sign recognition)
- Stainless steel loading sill protector in the luggage compartment
- Start/Stop technology
- Steering wheel: Three-spoke steering wheel, leather-free
- Tire pressure monitoring system (with tire-specific pressure loss warning)
- Transmission: 8-speed automatic transmission
- Upholstery: Leather/imitation leather comfort seats anthracite (incl. rear center armrest - insert: metal mesh - headliner: light beige)
- Warning tone/indicator when seat belts are not fastened (for all seats)
- Wheels: 19" 5-V-spoke alloy wheels, sport design, diamond cut/high-gloss black (with all-season tires 235/55 R19 with rims 7.5 x 19")

### Extra equipment

- Alarm system with motion/tilt sensor (security lock)
- Package: Driver Assistance Package (Driver Assistance - Adaptive Cruise Control - Emergency Stop Assist (automatic emergency stopping system in case of failure to heed warnings due to lack of steering, braking and acceleration by the driver, including activation of the hazard warning lights and automatic braking to a standstill) - Pilot Assist (lane guidance assistant with adaptive cruise control up to speeds of 130 km/h))
- Radio: Premium Sound audio system by Harman Kardon (600 watts of power - 14 speakers - Fresh Air - Subwoofer - Dirac Unison - Sound optimization)
- Glazing: Side and rear windows tinted (from the B-pillar back)

- Outdoor temperature display
- Package: Parking Assistance (front and rear parking aid with automatic braking intervention (rear))
- Package: Winter Package (front seat heating - rear seat heating - steering wheel heating)
- Panoramic glass sliding sunroof with lifting function (electric) (with integrated, continuously adjustable sunshade)
- Parking ticket holder
- Power outlet (12-volt connection in the luggage compartment)
- Radio accessories: Two USB-C ports on the back of the center console
- Radio: Audio system High Performance Sound (220 watts of power - 10 speakers)
- Rear parking assist with automatic braking intervention (rear)
- Rear seats in a 40/60 split or completely foldable with pass-through function
- Run-off Road Protection (preventive protection system in case of unintentional leaving of the road or impending rollovers and door unlocking)
- Safety braking system with disc brakes all around (internally ventilated) (automatic brake system pre-tensioning, brake assist and automatic hold function)
- Seats: Driver and front passenger seats height adjustable (electrically) (including manual tilt adjustment for the driver's seat)
- Speed-sensitive power steering
- Steering wheel adjustable for height and reach
- Steering wheel: Multifunction buttons on the steering wheel
- Third brake light (emergency brake lights (brake lights flash rapidly in case of heavy deceleration; hazard warning lights are automatically activated at speeds below 10 km/h))
- Wheels: Tire sealant (Incl. 12-volt compressor, maximum speed 80 km/h)
- Whiplash Protection System (WHIPS) (including immersion protection on all seats and energy-absorbing front seat cushions)

- Towbar (semi-electric)
- Package: Light Package (Headlight cleaning system - Full LED headlights "Thor's Hammer" Active High Beam with extended high beam, dynamic cornering lights, intelligent high beam assistant with adaptive headlight range control and integrated LED daytime running lights)
- Upholstery: Nappa leather/imitation leather comfort seats (perforated front seats) Light Beige (with active ventilation and electrically adjustable side bolsters for driver and front passenger seats - incl. rear center armrest - gearshift lever made of Swedish crystal glass by Orrefors - inlay: Drift Wood - headliner: Light Beige)



## Brief expert findings

Documents submitted	At the time of the inspection, the vehicle registration certificate Part 2 (title) was available, but the vehicle registration certificate Part 1 (document) was not. (Copy)
VIN comparison	The vehicle identification number (VIN) was read from the vehicle and its conformity with the submitted documents was confirmed by the undersigned during the inspection.
Inspection	The inspection conditions were sufficient for the assessment of the vehicle. No lifting equipment or pit was available for inspecting the vehicle. Therefore, inspection of the vehicle's underside was only possible to a limited extent.
Test drive	No test drive/shunting maneuver was carried out during the inspection of the vehicle.
Engine function test	An engine test run was performed.

## Value reducing factors

No.	Component group	Description
1	Misc.	Main inspection - No evidence - No deduction
2	Rear bumper	Rear bumper - Scratch(es) - Smart repair
3	Bonnet	Bonnet - Scratch(es) - Smart repair
4	Front bumper	Front bumper - Scratch(es) - Paint

## Repainting

### No. Repainting

1	Door - rear left side, Professionally carried out, Invoice of repair done Non-existent
---	--

## Paint coat thickness measurement

Door - rear left side	188 µm
-----------------------	--------

## Order/Scope of Order

An order was placed to prepare a sales report for the described vehicle. This report includes the following:

- Description of key vehicle information
- Documentation of equipment features  
(*Delivery by third-party service providers*)
- Documentation of damage, defects, missing parts
- Documentation of prior damage, unrepaired prior damage, repainting
- A brief visual or functional inspection of the equipment details, if possible.  
(*Functional testing of driver assistance systems is not included in the scope of services!*)
- a photographic documentation of the vehicle



## Basis for the order

This product is based on the guidelines for vehicle returns and valuations published by Alphabet Fleet GmbH. The expert makes the specific findings in each individual case objectively, within the framework of the prescribed standards, based on their own expertise.

The vehicle inspection takes place in a fully assembled, unassembled state.

Damage or defects that can only be detected during disassembly/diagnostic work or through further investigation remain within the realm of prognostic risk. An increased risk exists due to concealed defects caused by fraudulent misrepresentation and which were not identifiable by the expert.

Damage or defects resulting from normal use or wear and tear of the vehicle will be accepted in accordance with the applicable standard.

There was no explicit identification or monetary consideration of the expected features within the product.

Features which, in their nature and extent, slightly exceed normal use but do not constitute unacceptable damage, will be documented and indicated as signs of wear, if applicable.

Damage or defects that, according to the applicable standard, can no longer be attributed to normal use or wear and tear are listed under "Value Reducing Factors" in the product description.

Depending on the product specification, a monetary ID can be provided. If this takes place, the costs can be 100% d or pro rata depending on the vehicle's age and mileage.

## Previous damages

No apparent prior damage that had been repaired could be found on the vehicle.

## Comments

- Die Unterbodenbesichtigung war nur ebenerdig & eingeschränkt möglich. Mehrkosten möglich.



Figure 1: Diagonal front (left)



Figure 2: Diagonal front (right)



Figure 3: Diagonal rear (left)



Figure 4: Diagonal rear (right)



Figure 5: Interior - front

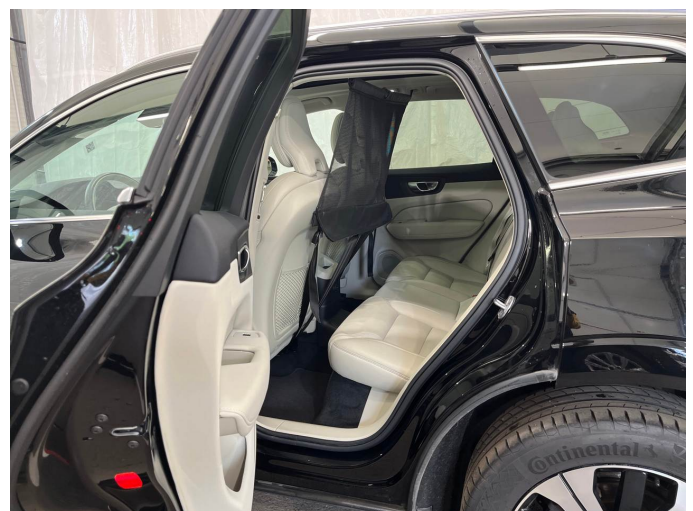


Figure 6: Interior - rear



Figure 7: Instrument cluster



Figure 8: Instrument panel



Figure 9: Interior 360° view



Figure 10: Cargo area

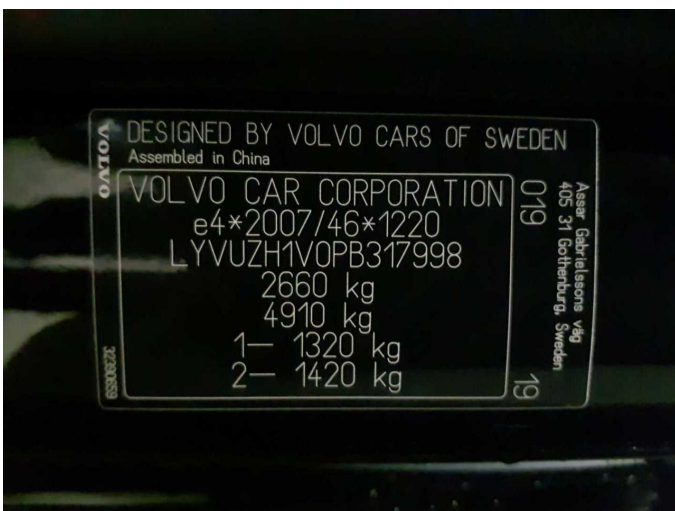


Figure 11: VIN



Figure 12: Mounted tyres



Figure 13: Documents

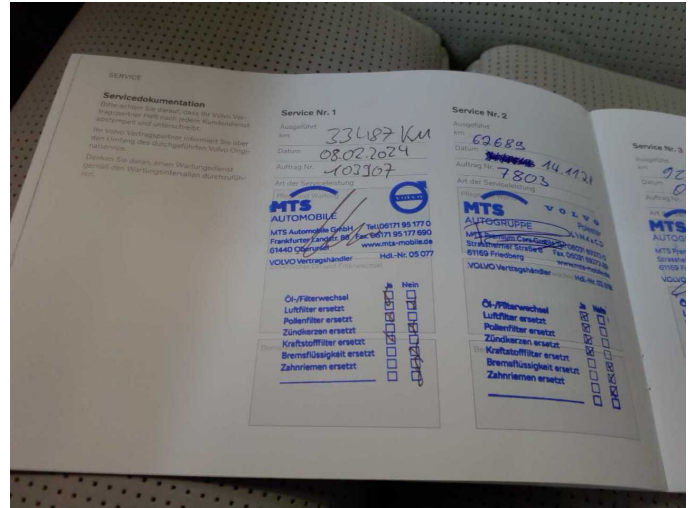


Figure 14: Documents

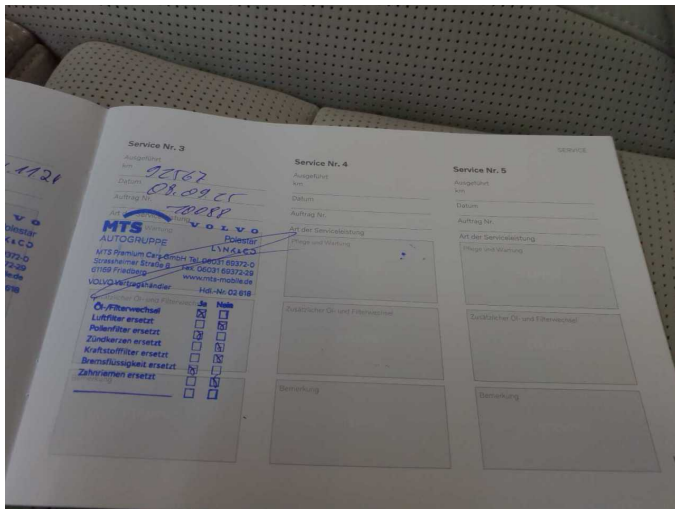


Figure 15: Documents

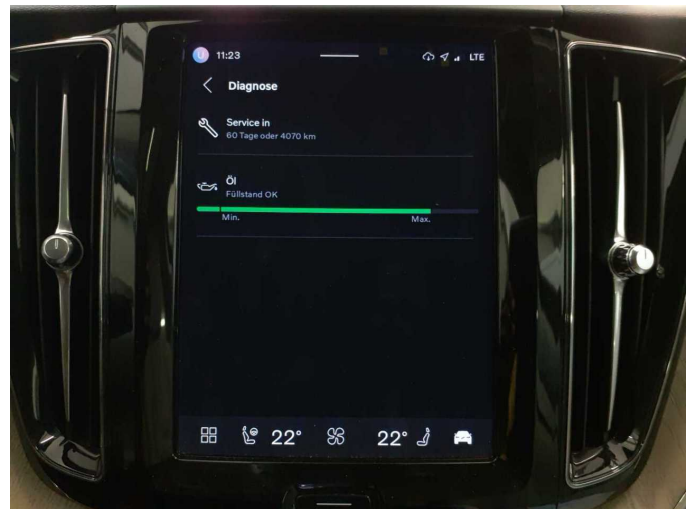


Figure 16: Documents



Figure 17: Additional tyres



Figure 18: Navigation



Figure 19: Misc.



Figure 20: Misc.



Figure 21: Misc.



Figure 22: Misc.



Figure 23: Misc.



Figure 24: Misc.



Figure 25: Misc.

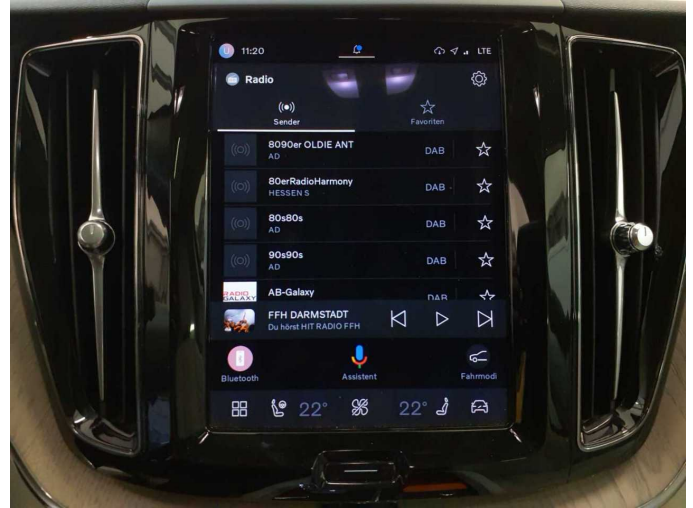


Figure 26: Misc.

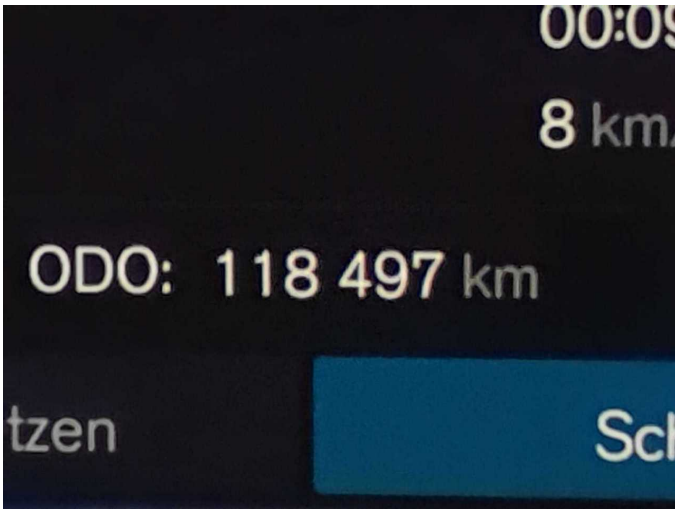


Figure 27: Misc.



Figure 28: Misc.

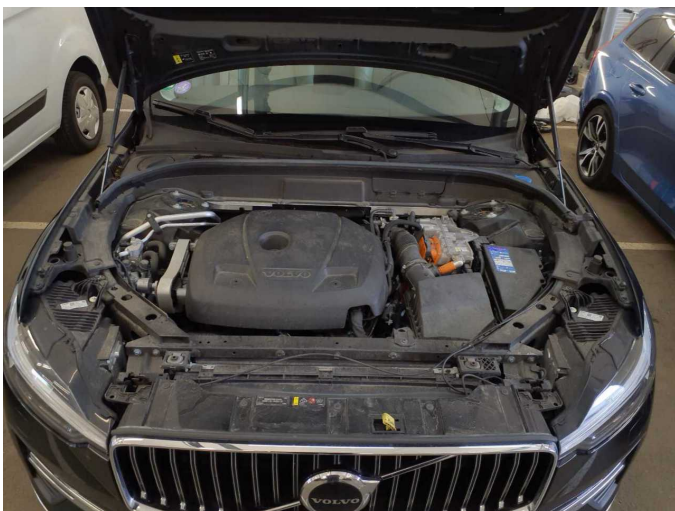


Figure 29: Misc.



Figure 30: Misc.



Figure 31: Misc.



Figure 32: Misc.

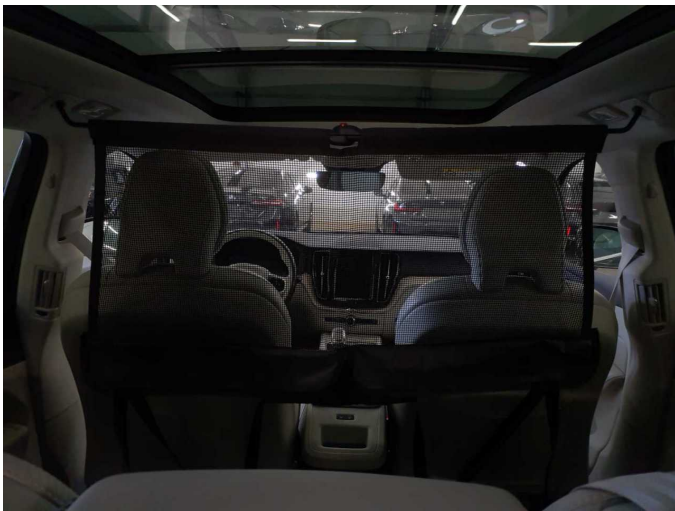


Figure 33: Misc.



Figure 34: Misc.



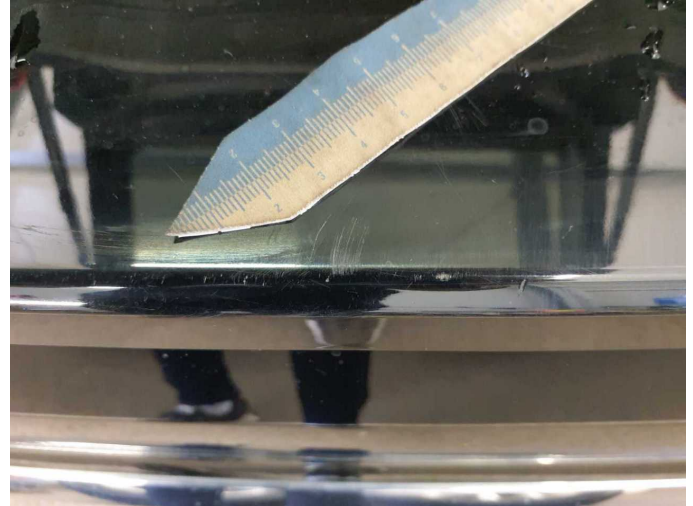
Figure 35: Misc.



Figure 36: Misc.



**Damage 2:** Rear bumper: Rear bumper - Scratch(es) - Smart repair



**Damage 2:** Rear bumper: Rear bumper - Scratch(es) - Smart repair



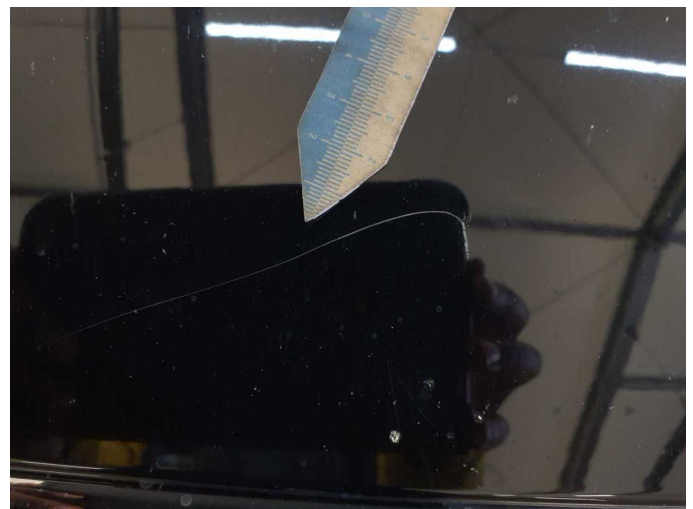
**Damage 2:** Rear bumper: Rear bumper - Scratch(es) - Smart repair



**Damage 2:** Rear bumper: Rear bumper - Scratch(es) - Smart repair



**Damage 3:** Bonnet: Bonnet - Scratch(es) - Smart repair



**Damage 3:** Bonnet: Bonnet - Scratch(es) - Smart repair



**Damage 4:** Front bumper: Front bumper - Scratch(es) - Paint



**Damage 4:** Front bumper: Front bumper - Scratch(es) - Paint



**Damage 4:** Front bumper: Front bumper - Scratch(es) - Paint



**Repainting 1:** Door - rear left side



**Repainting 1:** Door - rear left side



# Wartungshistorie

(gemäß Auftraggeber Informationen)

Fahrgestellnummer: LYVUZH1V0PB317998

Hersteller / Modell: VOLVO VOLVO XC60 T6 AWD Recharge Plus Bright

Datum	KM-Stand	Beschreibung
08.09.2025	92.567	Bremsflüssigkeit; Bremsflüssigkeit ern; Motoröl b. Wartung; Ölfilter ern; Regelwartungsdienst; Wartung Sonstiges
14.11.2024	62.693	Luffiltereinsatz ern; Motoröl b. Wartung; Ölfilter ern; Regelwartungsdienst; Reparatur Sonstiges; Wartung Sonstiges; Zündkerzen ern
08.02.2024	33.485	Motoröl b. Wartung; Ölfilter ern; Regelwartungsdienst; Wartung Sonstiges