

Expertise

Protocol number: 46213087
Order No. / Reference: 26490333
Inspection date: 22 Jun 2026

Manufacturer: Mercedes-Benz

Model: GLC 300 e 4Matic 9G-TRONIC Exclusive

VIN: W1N2539531F931225



Vehicle details

Manufacturer / Type / Model / Equipment

Mercedes-Benz GLC 300 e 4Matic 9G-TRONIC Exclusive

Vehicle Identification number	W1N2539531F931225
Mileage (Read)	68,397 km
First registration	29 Jan 2021
Number of holders	1
Next periodical technical inspection (Report on hand)	12/2027

Power / Engine displacement	155 kw / 1,991 ccm
Fuel type / Cylinder	Hybr.B/E ext.aufll / 4
Gearbox / Number of gears	Automatic / 9
Type of drive	All-wheel drive
Type of vehicle	SUV

Colour / colour code	Polarweiß
Doors / Seats	5 / 5
Upholstery type	Leather
Colour of upholstery	Black



Vehicle details

Maintenance booklet / proof	digital proof / complete	Next maintenance in	241 Tag(e)
Last service on / at	02/2026 at 66,367 km		
Key is / should be	2 / 2	FZG documents	ZB#2 (B) was available (copy), ZB#1 (S) was not available.
		Letter No.	GA326436
Previous damage / Accident	Detectable	Repainting	Detectable
Inspection conditions	sufficient	Lifting equipment / pit	No
Test drive	Not performed	Engine function test	Performed
Manufacturer key number/ type code number	2222 / AKU 00049		
Emission standard	EURO6;WLTP;AP;PI/CI; M, N1 I	fine dust sticker	
Permitted total weight	2,615 kg	Empty weight	

Tyres

Mounted tyres

#	Tyre size	Type of tyre	Manufacturer	Tread depth
1)	235/60 R18 103H	Winter tyres on Light alloy	Pirelli	6mm / 6mm
2)	235/60 R18 103H	Winter tyres on Light alloy	Pirelli	6mm / 6mm

Additional tyres

#	Tyre size	Type of tyre	Manufacturer	Tread depth
1)	235/55 R19 101V	Summer tyres on Light alloy	Pirelli	6mm / 6mm
2)	235/55 R19 101V	Summer tyres on Light alloy	Pirelli	6mm / 6mm

Replacement

Typ	Tyre size	Type of tyre	Manufacturer	Tread depth
	Tirefit	Expiration date 02/2026		

Legend: Tread depth information for the left tire is listed first, for the right tire it is listed second on the axle in the direction of travel.



Equipment

Standard equipment

- Airbag for driver and front passenger
- Airbag: Side airbag for driver and front passenger
- Active Brake Assist
- 4MATIC all-wheel drive
- ATTENTION ASSIST
- Heated exterior mirrors (left and right), electrically adjustable from inside
- Roof rails in polished aluminum
- Third brake light in LED technology
- EASY-Pack cargo cover (removable)
- Driving light assistant
- Electric windows (4-way)
- Velour floor mats in interior color
- Rear window heated
- Interior headliner fabric crystal grey
- KEYLESS-GO start function
- Climate: THERMATIC automatic climate control with 2 climate zones
- Communication module (LTE) for the use of Mercedes me connect services
- Charging system: AC on-board charger (AC charging)
- Steering wheel: Multifunction sports steering wheel in 3-spoke design in black leather
- Mercedes-Benz emergency call system
- Otto particulate filter
- Package: Interior light
- Radio: MBUX multimedia system
- Radio accessories: Touchpad
- Remote Services Plus
- Windscreen wipers with rain sensor
- Seats: Rear seat backrests foldable
- Seats: Front seats electrically adjustable
- High-visibility vest for drivers
- Central locking
- Airbag: Kneebag for driver
- Airbag: Windowbags
- Acoustic environmental protection
- Anti-lock braking system (ABS)
- Automatic passenger airbag deactivation
- On-board computer
- Brake system with larger brake discs on the front axle
- Tachometer
- DYNAMIC SELECT
- Electronic Stability Program (ESP)
- Chassis with higher ground clearance
- electric parking brake
- Transmission: 9G-TRONIC
- rear window wiper
- Instrument panel and door sills in ARTICO man-made leather
- Remote trunk lid release
- Instrument cluster with 2 tubular round instruments, 13.97 cm (5.5") multifunction display
- Headrests 5-way
- LED High Performance Headlights
- Steering column mechanically adjustable in height and length
- Navigation accessories: Extended MBUX functions
- Package: Storage
- Upholstery: ARTICO leatherette/Grenoble fabric
- Radio accessories: Digital radio
- Tire pressure monitoring system (TPMS)
- Wheels: 45.7 cm (18") alloy wheels, 4-spoke design
- Power steering
- Seats: i-Size child restraint system on the outer rear seats
- Cruise control
- Immobiliser
- Decorative elements: Linden wood, line structure, glossy brown



Extra equipment

- Ambient lighting (Design the interior according to your personal preference or current mood. With a total of 64 colors, the ambient lighting offers almost unlimited possibilities for lighting design and has the right color for every situation. Illuminated door sills on the driver and passenger sides.)
- Package: Business (for plug-in hybrid vehicles) (Advanced Parking Package: Active Parking Assist PARKTRONIC with reversing camera; Advanced Infotainment Package: Media display with touch operation, smartphone integration - Apple CarPlay and Android Auto, connectivity package navigation, traffic sign assist; Comfort Package: Heated seats for driver and front passenger, seat comfort package - electric and manual adjustment options for the front seats)
- Package: High End Park (Parking package with 360° camera, Active Parking Assist with PARKTRONIC)
- Package: KEYLESS-GO Comfort (vehicle key with KEYLESS-GO functionality - KEYLESS-GO access and drive authorization system - start/stop button - comfort opening and closing - door handles with chrome inlay - HANDS-FREE ACCESS - handle recess lighting - remote trunk lid closing - EASY-PACK trunk lid)
- Package: Public Charging (includes the Mercedes me Charge service and the Mode 3 charging cable)
- Panoramic sunroof
- Wheels: Winter complete wheels M+S 4x 45.7 cm (18") light alloy wheels in 5-spoke design (additionally vanadium silver painted (82R) with 235/60 R 18 on 8 J x18 ET 38)
- Paint finish: Special paint finish, solid color
- Package: Advanced Light (LED High Performance headlights and adaptive LED taillights, Adaptive Highbeam Assist)
- Package: AMG Line Exterior (Plug-in Hybrid) (AMG Styling, consisting of AMG front apron with sporty air intakes and chrome trim element, AMG rear apron in diffuser look with black insert, diamond grille with chrome pins, integrated Mercedes star and matte iridium silver louvre with chrome inlay, 19-inch (48.3 cm) AMG light-alloy wheels in 5-twin-spoke design, painted tremolite grey and high-sheen finish with 235/55 R19 tires on 8 J x 19 ET 38 rims, 2 visible tailpipe trims permanently integrated into the bumper)
- Package: High-end infotainment (Media display with touch operation, smartphone integration: Apple CarPlay and Android Auto, connectivity package, navigation, traffic sign assistant: thanks to intelligent linking of camera and map data, it can recognize not only speed limits, no-overtaking zones and their cancellation, but also MBUX augmented reality for navigation, fully digital instrument display, wireless charging system for mobile devices in the storage compartment)
- Package: Mirrors (Electrically folding exterior mirrors, lowering right exterior mirror, automatic dimming function)
- Upholstery: Black leather
- TIREFIT with tire inflation compressor
- Heat-insulating dark tinted glass all around from the B-pillar back

Brief expert findings

Documents submitted	At the time of the inspection, the vehicle registration certificate Part 2 (title) was available, but the vehicle registration certificate Part 1 (document) was not. (Copy)
VIN comparison	The vehicle identification number (VIN) was read from the vehicle and its conformity with the submitted documents was confirmed by the undersigned during the inspection.
Inspection	The inspection conditions were sufficient for the assessment of the vehicle. No lifting equipment or pit was available for inspecting the vehicle. Therefore, inspection of the vehicle's underside was only possible to a limited extent.
Test drive	No test drive/shunting maneuver was carried out during the inspection of the vehicle.
Engine function test	An engine test run was performed.

Value reducing factors

No.	Component group	Description
1	Equipment	Tirefit filler - Expired - Replace
2	2nd wheel set	1 alloy rim - Scratch(es) - Loss in value
3	2nd wheel set	1 alloy rim - Scratch(es) - Loss in value



Wear and tear

No.	Component group	Description
1	Front bumper	Front bumper - Stone chips - No deduction
2	Bonnet	Bonnet - Stone chips - No deduction
3	Vehicle glazing	Windscreen - Stone chips - No deduction

The vehicle shows signs of wear and tear commensurate with its age and use.

Previous damages

No.	Previous damage	Extent of damage (Net)
1	Front, Provided by user / customer, from 2 Apr 2025	1.027,44 €
2	Front, Provided by user / customer, from 22 Apr 2025	1.974,93 €
3	Front, Provided by user / customer, from 12 Mar 2026	2.426,62 €
4	Side - left, Provided by user / customer, from 14 Apr 2025	4.576,83 €

Repainting

No.	Repainting
1	Bonnet
2	Door - front left side

Paint coat thickness measurement

Bonnet	273 µm	Door - front left side	221 µm
--------	--------	------------------------	--------

Order/Scope of Order

An order was placed to prepare a sales report for the described vehicle. This report includes the following:

- Description of key vehicle information
- Documentation of equipment features
(Delivery by third-party service providers)
- Documentation of damage, defects, missing parts
- Documentation of prior damage, unrepaired prior damage, repainting
- A brief visual or functional inspection of the equipment details, if possible.
(Functional testing of driver assistance systems is not included in the scope of services!)
- a photographic documentation of the vehicle



Basis for the order

This product is based on the guidelines for vehicle returns and valuations published by Alphabet Fleet GmbH. The expert makes the specific findings in each individual case objectively, within the framework of the prescribed standards, based on their own expertise.

The vehicle inspection takes place in a fully assembled, unassembled state.

Damage or defects that can only be detected during disassembly/diagnostic work or through further investigation remain within the realm of prognostic risk. An increased risk exists due to concealed defects caused by fraudulent misrepresentation and which were not identifiable by the expert.

Damage or defects resulting from normal use or wear and tear of the vehicle will be accepted in accordance with the applicable standard.

There was no explicit identification or monetary consideration of the expected features within the product.

Features which, in their nature and extent, slightly exceed normal use but do not constitute unacceptable damage, will be documented and indicated as signs of wear, if applicable.

Damage or defects that, according to the applicable standard, can no longer be attributed to normal use or wear and tear are listed under "Value Reducing Factors" in the product description.

Depending on the product specification, a monetary ID can be provided. If this takes place, the costs can be 100% d or pro rata depending on the vehicle's age and mileage.

Previous damages

According to available information previous damages were repaired at the vehicle. Traces of repairs, which allow conclusions about the area of repair, were not recognizable during the inspection.

Comments

- Die Unterbodenbesichtigung war nur ebenerdig & eingeschränkt möglich. Mehrkosten möglich.



Figure 1: Diagonal front (left)



Figure 2: Diagonal front (right)



Figure 3: Diagonal rear (left)



Figure 4: Diagonal rear (right)



Figure 5: Interior - front



Figure 6: Interior - rear



Figure 7: Instrument cluster



Figure 8: Instrument panel



Figure 9: Interior 360° view



Figure 10: Cargo area



Figure 11: VIN



Figure 12: Mounted tyres



Figure 13: Documents



Figure 14: Documents

Prüfplakette (8) Nächste HU: 12.27

zugeteilt	Berechn. Druck (bar)	Summe der Bremskräfte Σ FB Ist (daN)	Erforderliche Bremskräfte Σ FB Min (daN)	Bremskraftanteil Ist (%)	Bremskraftanteil Min (%)	Gesamtbremsleistung 2 (%)
Brems-Druck/Kennw. (bar/-)	19,93	385	189	66,2	52,1	
	36,12	356	184	33,8	19,5	15,7
		410				

Ergebnis: Bestanden.

Figure 15: Documents



Figure 16: Additional tyres



Figure 17: Navigation



Figure 18: Misc.



Figure 19: Misc.



Figure 20: Misc.



Figure 21: Misc.

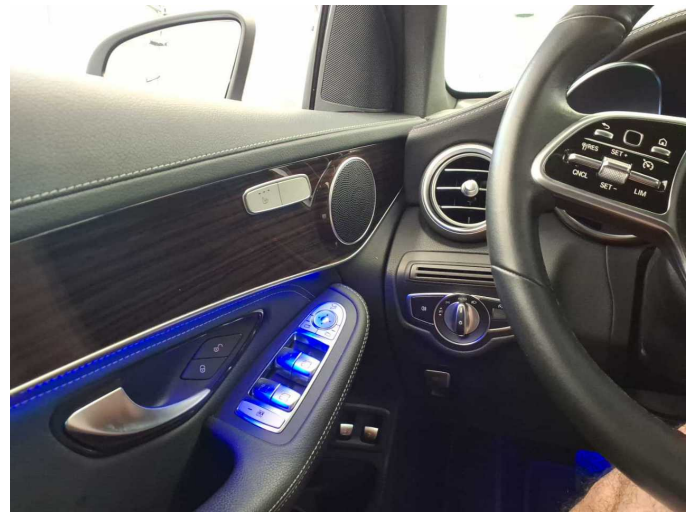


Figure 22: Misc.

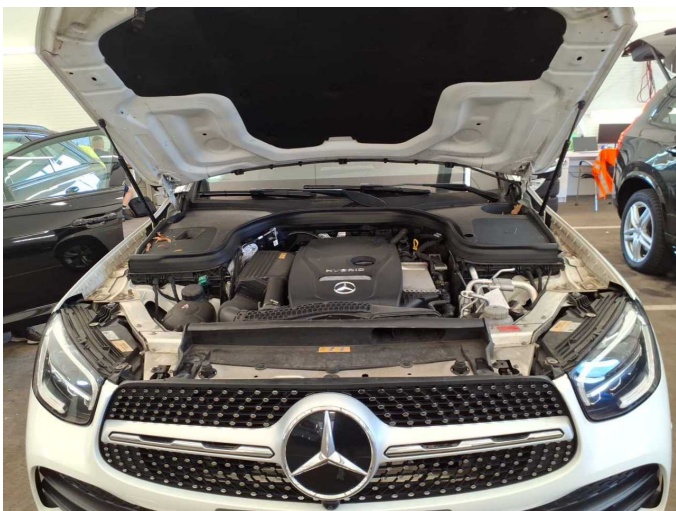


Figure 23: Misc.

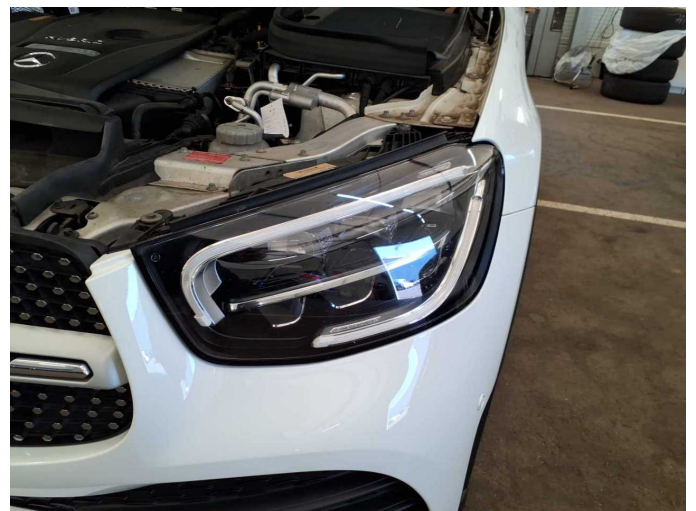


Figure 24: Misc.



Figure 25: Misc.



Figure 26: Misc.



Figure 27: Misc.



Figure 28: Misc.



Figure 29: Misc.



Figure 30: Misc.



Figure 31: Misc.



Figure 32: Misc.



Damage 1: Equipment: Tirefit filler - Expired - Replace



Damage 2: 2nd wheel set: 1 alloy rim - Scratch(es) - Loss in value



Damage 2: 2nd wheel set: 1 alloy rim - Scratch(es) - Loss in value



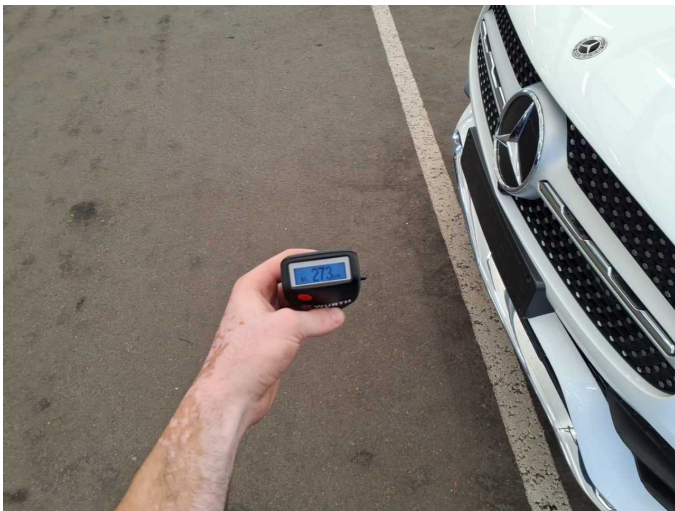
Damage 3: 2nd wheel set: 1 alloy rim - Scratch(es) - Loss in value



Damage 3: 2nd wheel set: 1 alloy rim - Scratch(es) - Loss in value



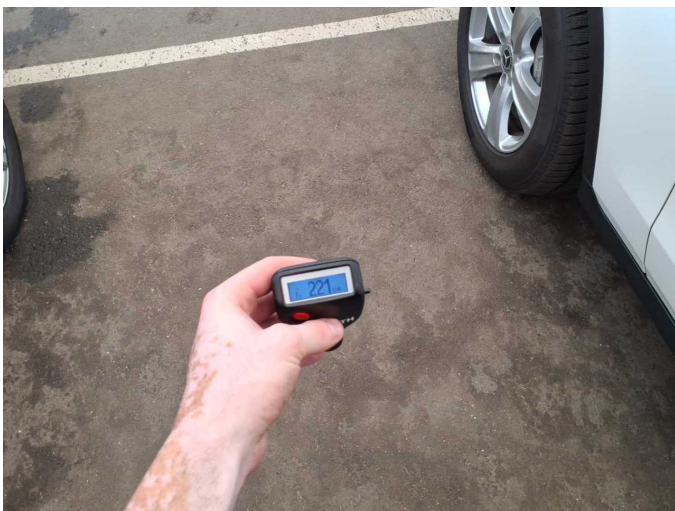
Damage 3: 2nd wheel set: 1 alloy rim - Scratch(es) - Loss in value



Repainting 1: Bonnet



Repainting 1: Bonnet



Repainting 2: Door - front left side



Repainting 2: Door - front left side



Wartungshistorie

(gemäß Auftraggeber Informationen)

Fahrgestellnummer: W1N2539531F931225

Hersteller / Modell: MERCEDES-BENZ MERCEDES-BENZ GLC 300 e 4Matic 9G-TRONIC Exclusive

Datum	KM-Stand	Beschreibung
18.02.2026	66.367	Regelwartungsdienst
21.02.2025	48.634	Regelwartungsdienst
23.02.2024	36.491	HU + AU; Regelwartungsdienst
13.03.2023	23.589	Regelwartungsdienst
21.02.2022	8.012	Regelwartungsdienst