

Expertise

Protocol number: 46101807
Order No. / Reference: 26528144
Inspection date: 17 Jun 2026

Manufacturer: Ford

Model: Focus 1.5 EcoBlue Start-Stopp-System Aut. TITANIUM X

VIN: WF0NXXGCHNPD63038



Vehicle details

Manufacturer / Type / Model / Equipment

Ford Focus 1.5 EcoBlue Start-Stopp-System Aut. TITANIUM X

Vehicle Identification number WF0NXXGCHNPD63038

Mileage (Read) 22,668 km

First registration 5 May 2023

Number of holders 1

Next periodical technical inspection 05/2026

(Report not on hand)

Power / Engine displacement 85 kw / 1,499 ccm

Fuel type / Cylinder Diesel / 4

Gearbox / Number of gears Automatic / 8

Type of drive Front drive

Type of vehicle Station wagon

Colour / colour code Silber-Metallic

Doors / Seats 5 / 5

Upholstery type Cloth

Colour of upholstery Black-Anthracite

Re-import no

readiness to drive Roadworthy



Vehicle details

Maintenance booklet / proof	digital proof / complete	Next maintenance in	42 %
Last service on / at	04/2025 at 17,204 km		
Key is / should be	2 / 2	FZG documents	ZB#2 (B) was available (copy), ZB#1 (S) was not available.
		Letter No.	GT895229
Previous damage / Accident	Detectable	Repainting	None detectable
Inspection conditions	sufficient	Lifting equipment / pit	No
Test drive	Not performed	Engine function test	Performed
readiness to drive	Roadworthy		
Manufacturer key number/ type code number	8566 / BYD 00002		
Emission standard	EURO6;WLTP;AP;PI/CI; M, N1 I	fine dust sticker	
Permitted total weight	1,910 kg	Empty weight	

Tyres

Mounted tyres

#	Tyre size	Type of tyre	Manufacturer	Tread depth
1)	205/60 R16 92V	Summer tyres on Steel rim with wheel cover	Goodyear	6mm / 6mm
2)	205/60 R16 92V	Summer tyres on Steel rim with wheel cover	Goodyear	6mm / 6mm

Additional tyres

#	Tyre size	Type of tyre	Manufacturer	Tread depth
1)	205/60 R16 92H	Winter tyres on Light alloy	Fulda	7mm / 7mm
2)	205/60 R16 92H	Winter tyres on Light alloy	Fulda	7mm / 7mm

Replacement

Typ	Tyre size	Type of tyre	Manufacturer	Tread depth
Tirefit		Expiration date 03/2027		

Legend: Tread depth information for the left tire is listed first, for the right tire it is listed second on the axle in the direction of travel.

TÜV SÜD Auto Partner GmbH
Wiesenring 2
04159 Leipzig

Inspection location
Hartmann Fleet Professionals GmbH
Leerenstraße 25
29683 Bad Fallingbommel



Equipment



Standard equipment

- Rear center armrest (with 2 cup holders)
- MyKey key system (individually programmable second key)
- Navigation: Ford SYNC 4 including Ford navigation system with AppLink, 13.2" touchscreen and DAB/DAB+ (6 speakers - Amazon Alexa built-in voice assistant - Android Auto and Apple CarPlay - Steering wheel controls - Digital user manual - Bluetooth hands-free calling and audio streaming - USB ports - Voice control for audio and phone - Ford Power-Up software updates - Intelligent route suggestions - Customizable user profiles - Radio player - Audible and visual route guidance, dynamic and cloud-based navigation with advanced traffic information system, lane guidance and road map for Europe)
- Pre-Collision Assist (Forward Alert system with pedestrian and bicycle detection)
- Rear view camera
- Headlight dipped beam (with switch-off delay)
- Side windows from the 2nd row of seats and rear window, dark tinted.
- Electro-mechanical speed-dependent power steering (EPAS - Electric Power Assisted Steering)
- Seats: Driver's seat height adjustable (with manually adjustable lumbar support)
- Seats: Front sports seats with enhanced lateral support
- Phone accessories: Inductive charging station for mobile devices (according to Qi standard, compatibility depends on the device)
- Warning system for unfastened seat belts for the 1st and 2nd rows of seats
- Airbag: Passenger airbag deactivation
- Ambient lighting, front
- Exterior mirrors painted in body color, electrically adjustable, heated and foldable (with integrated turn signals - ambient lighting)
- Hill start assist
- Roof spoiler painted in car color
- Digital instrument panel 12.3" (31.2 cm screen diagonal)
- Electronic Shifter
- Lane keeping assist including lane keeping assist
- Electric front and rear windows (with all-around closing function)
- FordPass Connect including live traffic information (Additionally for PowerShift automatic transmission: Ford Mobile Remote remote start function)
- Speed limiter (Intelligent speed limiter with speed limit display)
- Illuminated glove compartment
- rear window wiper
- Interior mirror, automatically dimming
- Intelligent safety system (front airbag for driver and front passenger - front and rear head and shoulder airbags - side airbag for driver and front passenger - seat belt tensioners and force limiters in the front and on the outer seats of the 2nd row - 3-point seat belts on all seats, height-adjustable in the front - safety pedal assembly)
- Headrests: 2 front and 3 rear, height adjustable
- Front center console "Premium" (sliding armrest - cup holders - storage compartments - 12-volt and USB connection)
- Emergency call assistant
- Front and rear parking pilot system
- Upholstery: Cloth
- Post-Collision Assist (In the event of a severe collision, which would also deploy the airbag and in which the driver might be incapacitated, this system initiates the braking process. This reduces the risk of colliding with further obstacles and road users after the initial collision. The driver can intervene and operate the accelerator or brake pedal manually throughout the entire process.)
- Tire repair kit (for use at a maximum speed of 80 km/h)
- Tire Pressure Monitoring System (TPMS)
- Windscreen wipers with rain sensor (sensitivity adjustable)
- Headlight assistant with day/night sensor
- Selective driving mode switch (including 3 selectable driving modes: Normal, Sport and Eco)
- Seats: Passenger seat height-adjustable, manually (with adjustable lumbar support)
- Seats: Rear seat backrest (foldable, 60:40 split with ski pass-through)
- Start-stop system
- Carpet floor mats front and rear, velour
- 2 USB ports in the center console, rear
- Variable radiator air intake
- Electronic immobilizer
- Central locking with remote control and remote luggage compartment release
- Anti-lock braking system (ABS) with electronic brake force distribution (EBD)
- Tires: 6.5 J x 16 design wheels (4) with 205/60 R16 tires (in 10-spoke design, in black-silver)
- Fabric headliner
- Diesel particulate filter (DPF)
- Tachometer
- Electronic Stability Program (ESP) (with Emergency Brake Assist (EBA) and Traction Control System (TCS))
- Electric parking brake with auto-hold function
- Ford Key Free system including Ford Power Start function (keyless unlocking/locking - keyless starting)
- Luggage compartment cover
- Luggage compartment lighting
- Cruise control
- Transmission: 8-speed automatic transmission
- Back window, heater
- Interior lighting with LED technology (front and rear and map reading lights at the front)
- Isofix mounting (including top tether anchor points on the outer seats of the 2nd row)



- LED headlights (LED low beam - LED high beam - LED daytime running lights incl. integrated LED turn signals at the front - LED cornering lights, static, incl. integrated LED fog light function and maneuvering light)
- Make-up mirrors in driver and passenger sun visors

- Air conditioning with automatic temperature control (separately adjustable for driver and passenger side (2-zone automatic climate control))
- Knee pads on the center console
- LED taillights
- Steering wheel: 3-spoke design steering wheel (in Sensico leather look)
- Steering column, adjustable (adjustable in height and reach)

Extra equipment

- Package: Easy Parking (Active Parking Assist with parking and exiting function (in conjunction with 8-speed automatic transmission including semi-automated vehicle guidance) - Door edge protection - Rearview camera with "Split View" technology)
- Package: Winter (heated windscreen - heated steering wheel - individually and variably heated front seats)
- Seats: Ford ergonomic seat (driver and front passenger seat, 18-way adjustable: - position, height and tilt of the backrest and seat cushion manually adjustable (in conjunction with EcoBoost Hybrid - front passenger seat, 2-way adjustable) - thigh support, manually extendable - lumbar support, 4-way electrically adjustable)

- Package: Driver Assistance Package II (Drive Assist Intelligent adaptive cruise control Lane keeping assist Traffic jam assist with Stop&Go Traffic sign recognition Wrong-way driver warning radio Evasive steering assist Distance display and distance warning Driver drowsiness detection High beam assist (in conjunction with adaptive LED matrix headlights with glare-free high beam assist) Blind spot assist with cross traffic alert including emergency braking function (when reversing out of parking spaces) and trailer recognition Rear view camera with split view Electrically folding exterior mirrors with surround view)
- Paint finish: Metallic

Brief expert findings

Documents submitted	At the time of the inspection, the vehicle registration certificate Part 2 (title) was available, but the vehicle registration certificate Part 1 (document) was not. (Copy)
VIN comparison	The vehicle identification number (VIN) was read from the vehicle and its conformity with the submitted documents was confirmed by the undersigned during the inspection.
Inspection	The inspection conditions were sufficient for the assessment of the vehicle. No lifting equipment or pit was available for inspecting the vehicle. Therefore, inspection of the vehicle's underside was only possible to a limited extent.
Test drive	No test drive/shunting maneuver was carried out during the inspection of the vehicle.
Engine function test	An engine test run was performed.
readiness to drive	The vehicle was roadworthy at the time of inspection.

Value reducing factors

No.	Component group	Description
1	Wheel / tyres	Wheel cover - rear left side - Deformed - Replace
2	Wheel / tyres	Wheel cover - rear right side - Deformed - Replace
3	Misc.	Main inspection - Due - Perform

Order/Scope of Order

An order was placed to prepare a sales report for the described vehicle. This report includes the following:

- Description of key vehicle information
- Documentation of equipment features
(*Delivery by third-party service providers*)
- Documentation of damage, defects, missing parts
- Documentation of prior damage, unrepaired prior damage, repainting
- A brief visual or functional inspection of the equipment details, if possible.
(*Functional testing of driver assistance systems is not included in the scope of services!*)
- a photographic documentation of the vehicle



Basis for the order

This product is based on the guidelines for vehicle returns and valuations published by Alphabet Fleet GmbH. The expert makes the specific findings in each individual case objectively, within the framework of the prescribed standards, based on their own expertise.

The vehicle inspection takes place in a fully assembled, unassembled state.

Damage or defects that can only be detected during disassembly/diagnostic work or through further investigation remain within the realm of prognostic risk. An increased risk exists due to concealed defects caused by fraudulent misrepresentation and which were not identifiable by the expert.

Damage or defects resulting from normal use or wear and tear of the vehicle will be accepted in accordance with the applicable standard.

There was no explicit identification or monetary consideration of the expected features within the product.

Features which, in their nature and extent, slightly exceed normal use but do not constitute unacceptable damage, will be documented and indicated as signs of wear, if applicable.

Damage or defects that, according to the applicable standard, can no longer be attributed to normal use or wear and tear are listed under "Value Reducing Factors" in the product description.

Depending on the product specification, a monetary ID can be provided. If this takes place, the costs can be 100% or pro rata depending on the vehicle's age and mileage.



Figure 1: Diagonal front (left)



Figure 2: Diagonal front (right)



Figure 3: Diagonal rear (left)



Figure 4: Diagonal rear (right)

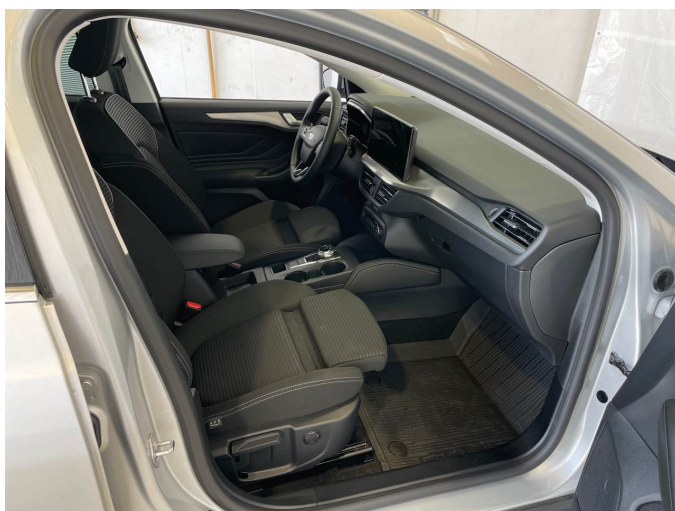


Figure 5: Interior - front



Figure 6: Interior - rear



Figure 7: Instrument cluster



Figure 8: Instrument panel



Figure 9: Interior 360° view



Figure 10: Cargo area



Figure 11: VIN



Figure 12: Mounted tyres



Figure 13: Documents



Figure 14: Additional tyres

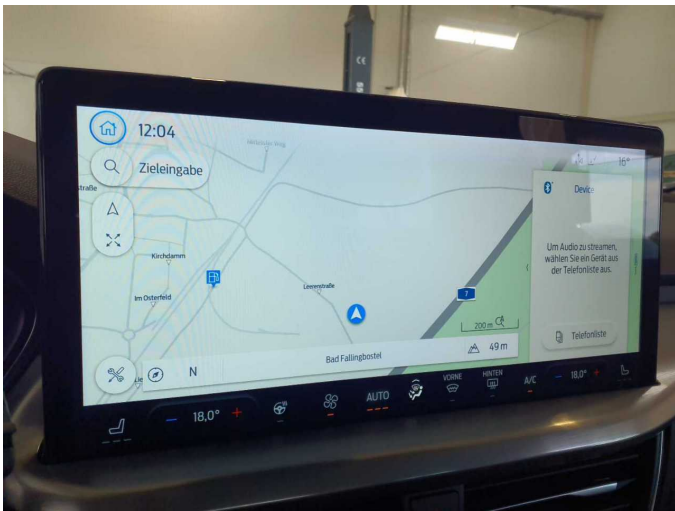


Figure 15: Navigation



Figure 16: Misc.



Figure 17: Misc.

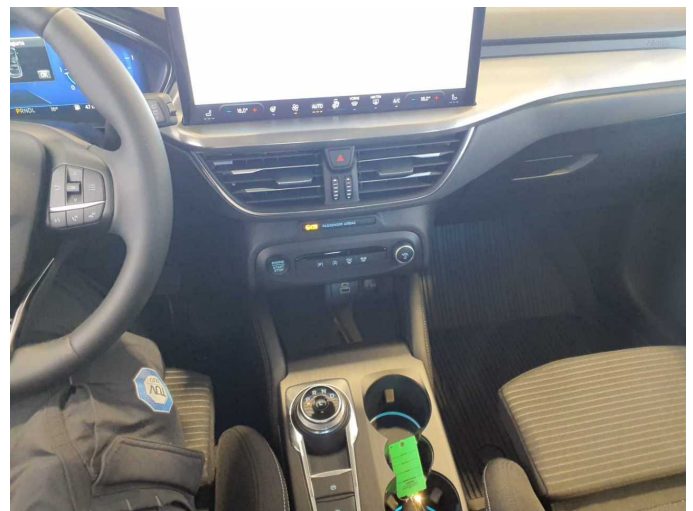


Figure 18: Misc.



Figure 25: Misc.



Figure 26: Misc.



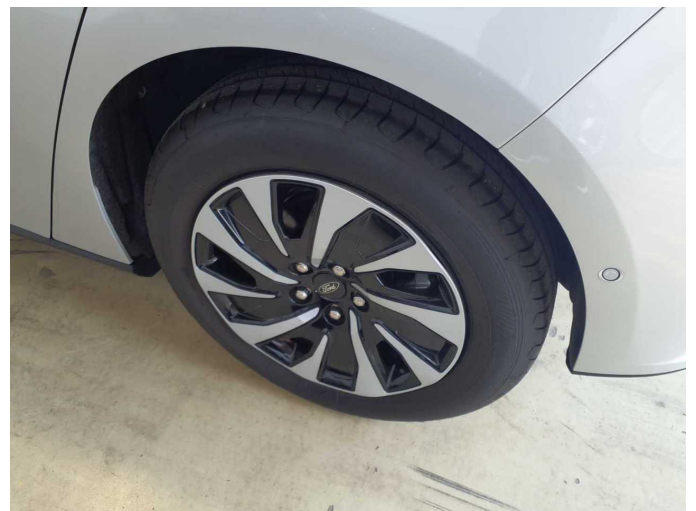
Figure 27: Misc.



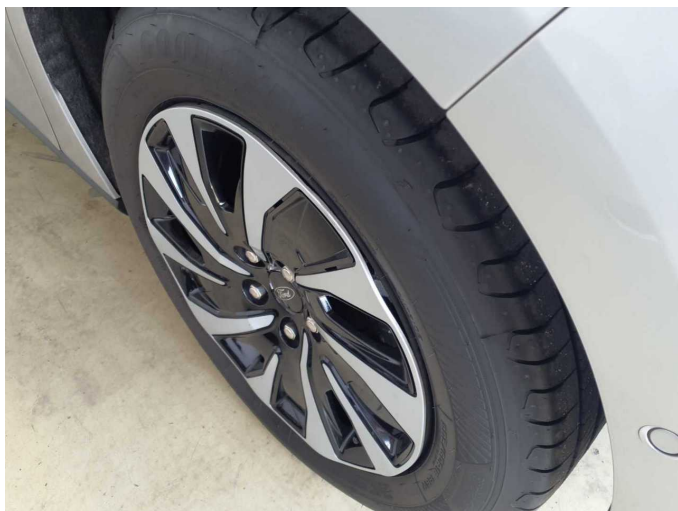
Figure 28: Misc.



Figure 29: Misc.



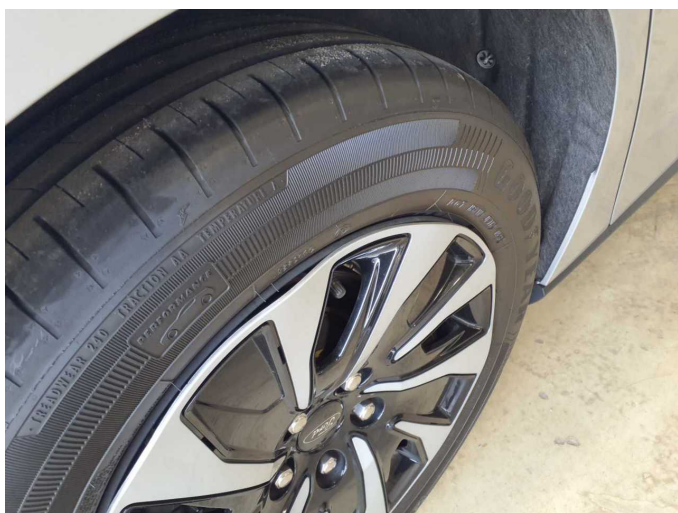
Damage 1: Wheel / tyres: Wheel cover - rear left side - Deformed - Replace



Damage 1: Wheel / tyres: Wheel cover - rear left side - Deformed - Replace



Damage 2: Wheel / tyres: Wheel cover - rear right side - Deformed - Replace



Damage 2: Wheel / tyres: Wheel cover - rear right side - Deformed - Replace