

Expertise

Protocol number: 45923190
Order No. / Reference: 26451667
Inspection date: 11 Jun 2026

Manufacturer: Opel

Model: Vivaro 2.0 D Cargo L EHZ Autm. Elegance

VIN: VXEVFEHZ7N7042612



Vehicle details

Manufacturer / Type / Model / Equipment

Opel Vivaro 2.0 D Cargo L EHZ Autm. Elegance

Vehicle Identification number VXEVFEHZ7N7042612

Mileage (Read) 123,195 km

First registration 11 Aug 2022

Number of holders 1

Power / Engine displacement 130 kw / 1,997 ccm

Fuel type / Cylinder Diesel / 4

Gearbox / Number of gears Automatic / 8

Type of drive Front drive

Type of vehicle Van

Colour / colour code TYPE HABILLAGE
EXTERIEUR PLATE
STANDARD

Doors / Seats 4 / 3

Upholstery type Cloth

Colour of upholstery Black-Grey



Vehicle details

Maintenance booklet / proof	digital evidence / incomplete	Next maintenance in	30 km
Last service on / at	01/2026 at 114,851 km		
Key is / should be	2 / 2	FZG documents	ZB#2 (B) was available (copy), ZB#1 (S) was not available.
		Letter No.	GN176200
Previous damage / Accident	Detectable	Repainting	Detectable
Inspection conditions	sufficient	Lifting equipment / pit	yes
Test drive	Not performed	Engine function test	Performed
Manufacturer key number/ type code number	3003 / AXZ 01227		
Emission standard	EURO6;WLTP;AR;PI/CI;N1 III, N2	fine dust sticker	
Permitted total weight	3,100 kg	Empty weight	

Tyres

Mounted tyres

#	Tyre size	Type of tyre	Manufacturer	Tread depth
1)	215/65 R16 109T	Winter tyres on Light alloy	Hankook	5mm / 5mm
2)	215/65 R16 106T	Winter tyres on Light alloy	Continental	6mm / 6mm

Additional tyres

#	Tyre size	Type of tyre	Manufacturer	Tread depth
1)	215/65 R16 106T	Summer tyres on Steel	Michelin	4mm / 4mm
2)	215/65 R16 106T	Summer tyres on Steel	Michelin	7mm / 7mm

Legend: Tread depth information for the left tire is listed first, for the right tire it is listed second on the axle in the direction of travel.



Equipment

Standard equipment

- Storage compartments (storage compartment in the center console, front - storage shelf above the windshield, open - storage compartment in the front doors, suitable for 1.5-liter beverage bottles - glove compartment, open - storage compartment on dashboard, passenger side, closed)
- Exterior mirror housings in black
- Hill Start Assist
- On-board computer
- Diesel particulate filter, maintenance-free
- Three-point seat belts on all seats (belt force limiter, front - double belt tensioners, front - warning tone and light for unfastened seat belts, front)
- Speed controller and limiter
- Grab handle in the first row of seats, passenger side
- Air conditioning, front with particle and odor filter (recirculation mode, manual)
- Steering column, adjustable for reach and height
- Fatigue detection level 1 coffee break
- Package: Driver Assistance Package 1
- Radio: Multimedia radio with 7" color touchscreen display (Automatic music recognition for audio devices with USB connection, Bluetooth audio streaming, Digital radio reception DAB+, Hands-free system via Bluetooth interface, Display of phonebook and call lists, Up to 10 mobile phones can be paired, Display of pictures/films/videos via USB interface, Smartphone integration, Voice control, 1 USB interface, Dual tuner, Graphic equalizer, 4 speakers (8 in double cab Edition or Elegance))
- Side impact protection
- Side protection strips (in black)
- Visibility equipment (rain sensor - automatic dipped headlights)
- Sun visors, driver and passenger
- 12-volt power outlet in the center console
- 12V power outlet in the cargo area and in the lower glove compartment (2nd row of seats, left side of cargo area)
- Doors: Rear wing doors, sheet metal with a 180° opening angle
- Lashing eyes (8) in the cargo area
- Heat-insulating glazing, tinted
- Payload increased by +300 kg
- ABS including brake assist and adaptive brake light
- Driver and passenger side airbags (front airbag, passenger airbag, deactivatable)
- Anti-lock braking system (ABS) with cornering brake control and brake assist
- Exterior mirrors, electrically folding, heated and adjustable
- Battery discharge protection
- Floor covering: Cargo area floor, painted
- third brake light
- Tachometer
- Electric parking brake
- Electronic Stability Program (ESP Plus)
- Electric front windows (with one-touch function)
- Transmission: 8-speed automatic
- Glove compartment closed at the top (cooled and illuminated)
- Steering wheel: Comfort steering wheel (PU), flattened at the bottom
- Fog light
- Park pilot, front and rear parking aid (with acoustic warning signal when parking forwards and backwards - blind spot warning - electrically folding exterior mirrors - fog lights)
- Radio accessories: Digital radio reception DAB+ (Digital Audio Broadcasting) (Offers a wider selection of radio programs. Digitally broadcast radio stations and traffic information can be received.)
- Wheels: Tire repair kit (with tire sealant and 12-volt compressor (without jack))
- Wheels: Steel wheels 7 J x 16 with wheel hub cover (tires 215/65 R 16 C 106T)
- Speed-sensitive power steering
- Seats: Comfort driver's seat and double passenger seat (comfort driver's seat adjustable in 6 ways, with armrest and lumbar support - double passenger seat with storage under the seat - height-adjustable headrests, front)
- Daytime running light
- Traction control with engine and brake intervention (TC Plus)
- Doors: Sliding door, passenger side
- Electronic immobilizer
- Central locking with remote control
- Ignition key (2), foldable



Extra equipment

- Steering wheel: Multifunction leather steering wheel
- Radio: Multimedia Navi Pro with 7" color touchscreen display and voice control for audio, telephone and navigation (automatic music recognition (title, album, artist, cover) for audio devices with USB connection, Bluetooth audio streaming, hands-free calling via Bluetooth interface, up to 10 mobile phones can be paired, image display via USB interface, navigation system with integrated memory, OpelConnect with telematics services, map of Europe, 3D map display, TMC GPS module, smartphone integration via Apple CarPlay and Android Auto, 1 USB interface, dual tuner, graphic equalizer)
- Doors: Rear wing doors, glazed with a 180° opening angle (and heated rear window wipers)
- Package: Design package (front and rear bumpers in body color - door handles in body color - exterior mirror housings in black - exterior mirrors, electrically adjustable, heated and folding - side protection strip in body color - fog lights - LED daytime running lights)
- 180° panoramic reversing camera (displays the area behind the vehicle up to 180 degrees, including steering guidelines, when reverse gear is engaged, in the color display of the infotainment system.)
- Seats: Comfort driver's seat and multifunctional double passenger seat
- Partition wall: closed with window (FlexCargo function)

Brief expert findings

Documents submitted	At the time of the inspection, the vehicle registration certificate Part 2 (title) was available, but the vehicle registration certificate Part 1 (document) was not. (Copy)
VIN comparison	The vehicle identification number (VIN) was read from the vehicle and its conformity with the submitted documents was confirmed by the undersigned during the inspection.
Inspection	The inspection conditions were sufficient for the assessment of the vehicle. Lifting equipment and/or a pit were available for examining the vehicle.
Test drive	No test drive/shunting maneuver was carried out during the inspection of the vehicle.
Engine function test	An engine test run was performed.

Value reducing factors

No.	Component group	Description
1	Misc.	Inspection / maintenance (in 30km) - No evidence - No deduction
2	Misc.	Main inspection - No evidence - No deduction
3	Gearbox	Gearbox - Leaking - Perform diagnosis
4	Electronic systems	Electronic systems - Specify findings - Perform diagnosis
5	Trim / covers	Trim / covers - Loose - Un- / install
6	Side panel - rear right side	Side panel - dent(s) - Smooth repair work
7	Sill - left side	Sill - Scratch(es) - Smart repair
8	Side panel - rear left side	Side panel - Scratch(es) - Smart repair
9	Side panel - rear right side	Side panel - Scratch(es) - Smart repair
10	Roof	Roof rail - left side - Scratch(es) - Smart repair
11	Boot lid / rear door	Hinge (Lack löst sich) - Paint defect - Smart repair
12	Boot lid / rear door	Hinge - Scratch(es) - Smart repair
13	Seat - front	Seat cover - left side - Scratch(es) - Smart repair
14	Door - front right side	Door - Dent / paintcoat damage - Smart repair
15	Fog lamp	Fog lamp - front right side - Broken / torn - Replace
16	Engine	Engine (Motorkontrolle,nicht fahrbereit) - Specify findings - Perform diagnosis
17	Front bumper	Front bumper (Inklusive Anbauteile) - Scratch(es) - Paint
18	Vehicle glazing	Windscreen - Stone chips - Replace



Wear and tear

No.	Component group	Description
1	Door - front left side	Door - Dent / paintcoat damage - No deduction
2	Rear bumper	Rear bumper (unpainted) - Scratch(es) - No deduction
3	Roof	Roof - dent(s) - No deduction
4	Side panel - rear left side	Brightware - Scratch(es) - No deduction

The vehicle shows signs of wear and tear commensurate with its age and use.

Previous damages

No.	Previous damage	Extent of damage (Net)
1	Underbody, Provided by user / customer, from 3 Feb 2025	1.049,69 €
2	Front, Provided by user / customer, from 25 Sept 2024	14.382,46 €

Repainting

No.	Repainting
1	Mudguard - left side, Professionally carried out, Invoice of repair done Non-existent
2	Bonnet, Professionally carried out, Invoice of repair done Non-existent

Paint coat thickness measurement

Mudguard - left side	183 µm	Bonnet	209 µm
----------------------	--------	--------	--------

Order/Scope of Order

An order was placed to prepare a sales report for the described vehicle. This report includes the following:

- Description of key vehicle information
- Documentation of equipment features
(*Delivery by third-party service providers*)
- Documentation of damage, defects, missing parts
- Documentation of prior damage, unrepaired prior damage, repainting
- A brief visual or functional inspection of the equipment details, if possible.
(*Functional testing of driver assistance systems is not included in the scope of services!*)
- a photographic documentation of the vehicle



Basis for the order

This product is based on the guidelines for vehicle returns and valuations of light commercial vehicles published by Alphabet Fleet Management GmbH. The expert makes the specific findings in each individual case objectively, within the framework of the prescribed standards, based on their own expertise.

The vehicle inspection takes place in a fully assembled, unassembled state.

Damage or defects that can only be detected during disassembly/diagnostic work or through further investigation remain within the realm of prognostic risk. An increased risk exists due to concealed defects caused by fraudulent misrepresentation and which were not identifiable by the expert.

Damage or defects resulting from normal use or wear and tear of the vehicle will be accepted in accordance with the applicable standard.

There was no explicit identification or monetary consideration of the expected features within the product.

Features which, in their nature and extent, slightly exceed normal use but do not constitute unacceptable damage, will be documented and indicated as signs of wear, if applicable.

Damage or defects that, according to the applicable standard, can no longer be attributed to normal use or wear and tear are listed under "Value Reducing Factors" in the product description.

Depending on the product specification, a monetary ID can be provided. If this takes place, the costs can be 100% or pro rata depending on the vehicle's age and mileage.

Previous damages

According to available information previous damages were repaired at the vehicle. Traces of repairs, which allow conclusions about the area of repair, were not recognizable during the inspection.



Figure 1: Diagonal front (left)



Figure 2: Diagonal front (right)



Figure 3: Diagonal rear (left)



Figure 4: Diagonal rear (right)



Figure 5: Interior - front



Figure 6: Interior - rear



Figure 7: Instrument cluster



Figure 8: Instrument panel



Figure 9: Interior 360° view



Figure 10: Cargo area

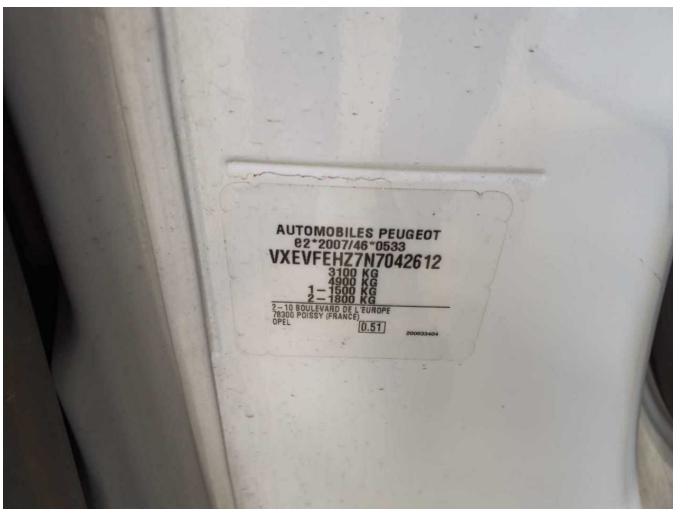


Figure 11: VIN



Figure 12: Mounted tyres



Figure 19: Misc.



Figure 20: Misc.



Figure 21: Misc.



Figure 22: Misc.

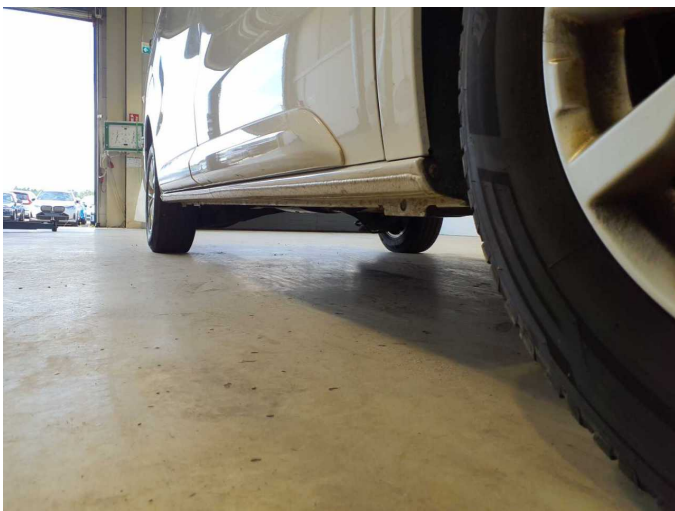


Figure 23: Misc.



Figure 24: Misc.



Figure 25: Misc.



Figure 26: Misc.



Figure 27: Misc.



Figure 28: Misc.



Damage 1: Misc.: Inspection / maintenance (in 30km) - No evidence - No deduction



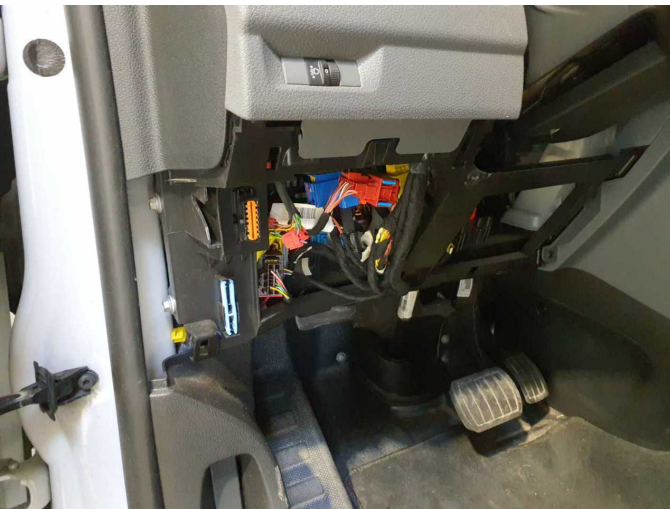
Damage 3: Gearbox: Gearbox - Leaking - Perform diagnosis



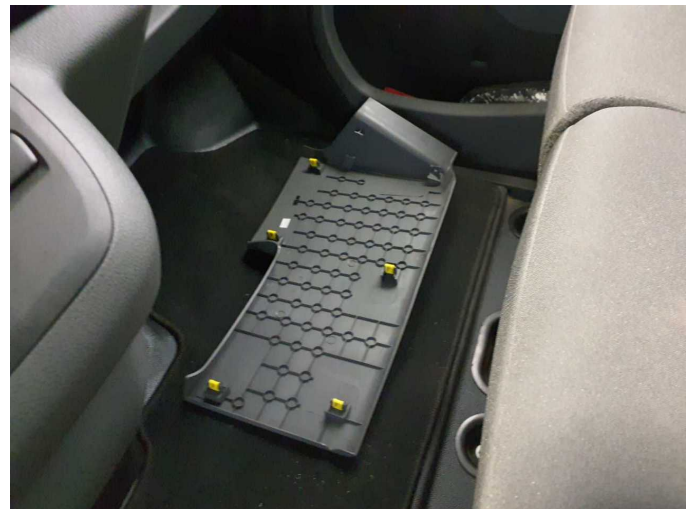
Damage 4: Electronic systems: Electronic systems - Specify findings - Perform diagnosis



Damage 4: Electronic systems: Electronic systems - Specify findings - Perform diagnosis



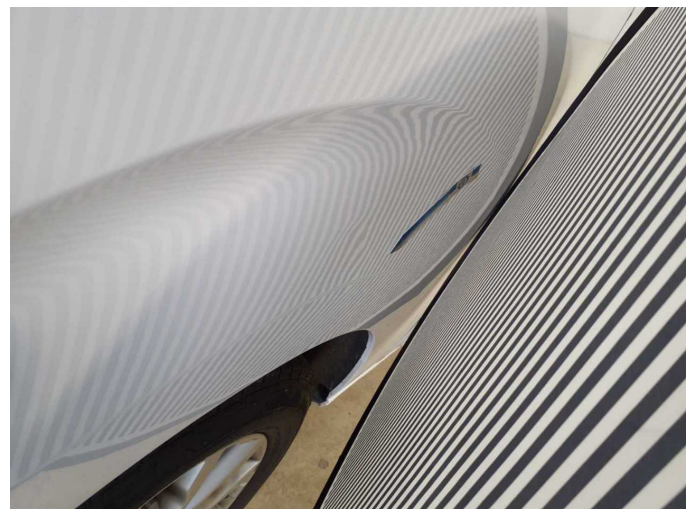
Damage 5: Trim / covers: Trim / covers - Loose - Un- / install



Damage 5: Trim / covers: Trim / covers - Loose - Un- / install



Damage 6: Side panel - rear right side: Side panel - dent(s) - Smooth repair work



Damage 6: Side panel - rear right side: Side panel - dent(s) - Smooth repair work



Damage 7: Sill - left side: Sill - Scratch(es) - Smart repair



Damage 7: Sill - left side: Sill - Scratch(es) - Smart repair



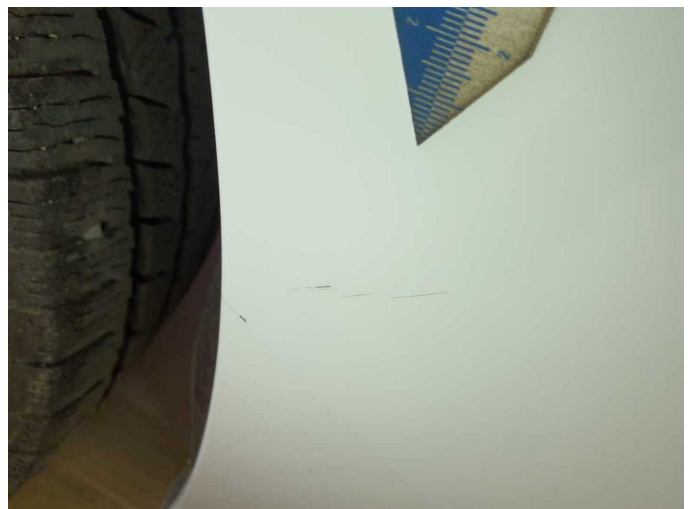
Damage 8: Side panel - rear left side: Side panel - Scratch(es) - Smart repair



Damage 8: Side panel - rear left side: Side panel - Scratch(es) - Smart repair



Damage 9: Side panel - rear right side: Side panel - Scratch(es) - Smart repair



Damage 9: Side panel - rear right side: Side panel - Scratch(es) - Smart repair



Damage 10: Roof: Roof rail - left side - Scratch(es) - Smart repair



Damage 10: Roof: Roof rail - left side - Scratch(es) - Smart repair



Damage 11: Boot lid / rear door: Hinge (Lack löst sich) - Paint defect - Smart repair



Damage 11: Boot lid / rear door: Hinge (Lack löst sich) - Paint defect - Smart repair



Damage 12: Boot lid / rear door: Hinge - Scratch(es) - Smart repair



Damage 12: Boot lid / rear door: Hinge - Scratch(es) - Smart repair



Damage 13: Seat - front: Seat cover - left side - Scratch(es) - Smart repair



Damage 13: Seat - front: Seat cover - left side - Scratch(es) - Smart repair



Damage 14: Door - front right side: Door - Dent / paintcoat damage - Smart repair



Damage 14: Door - front right side: Door - Dent / paintcoat damage - Smart repair



Damage 14: Door - front right side: Door - Dent / paintcoat damage - Smart repair



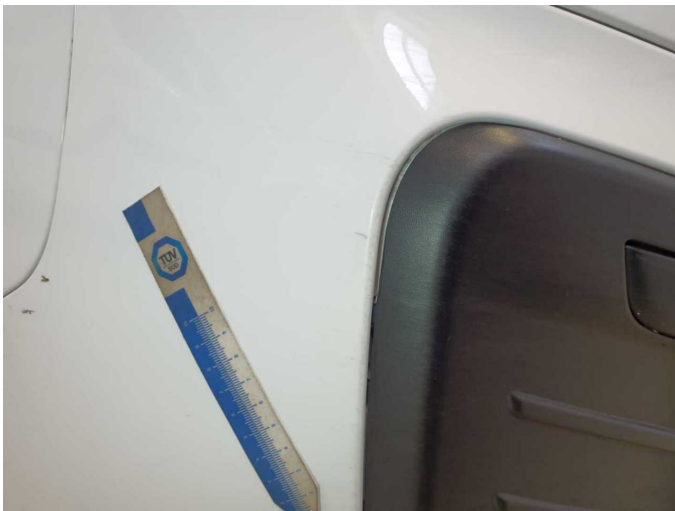
Damage 15: Fog lamp: Fog lamp - front right side - Broken / torn - Replace



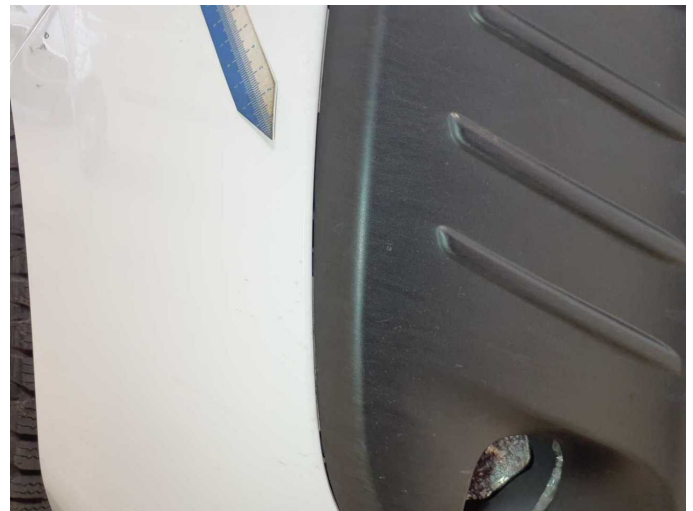
Damage 16: Engine: Engine (Motorkontrolle,nicht fahrbereit) - Specify findings - Perform diagnosis



Damage 17: Front bumper: Front bumper (Inklusive Anbauteile) - Scratch(es) - Paint



Damage 17: Front bumper: Front bumper (Inklusive Anbauteile) - Scratch(es) - Paint



Damage 17: Front bumper: Front bumper (Inklusive Anbauteile) - Scratch(es) - Paint



Damage 17: Front bumper: Front bumper (Inklusive Anbauteile) - Scratch(es) - Paint



Damage 17: Front bumper: Front bumper (Inklusive Anbauteile) - Scratch(es) - Paint



Damage 18: Vehicle glazing: Windscreen - Stone chips - Replace



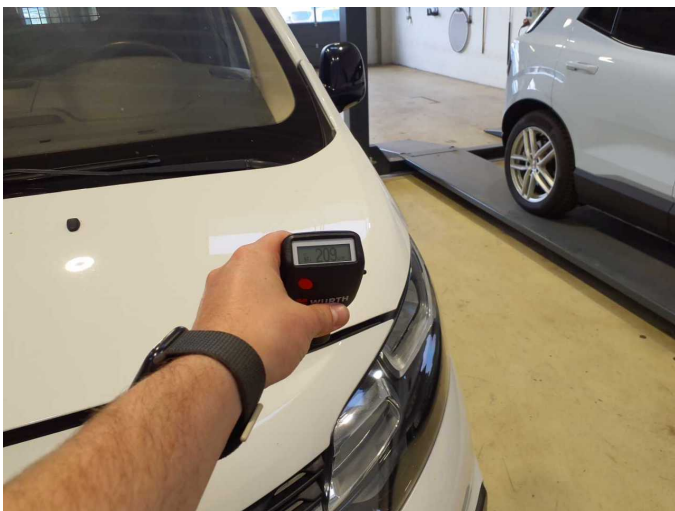
Damage 18: Vehicle glazing: Windscreen - Stone chips - Replace



Repainting 1: Mudguard - left side



Repainting 1: Mudguard - left side



Repainting 2: Bonnet



Repainting 2: Bonnet