

MACADAM



AUDI A3 SPORTBACK:

| | | | |
|-------------------------------------|--------------------------|-------------------------|-------------------------------|
| Vinnumber: | WAUZZZGY6MA088384 | Versionname: | 2.0 30 TDi 85kW S line |
| First Registrationdate: | 26/03/2021 | Fiscalpower: | |
| Expertise Mileage: | 124884 | Power Kw: | 85 |
| Bodytype: | | Body colour: | Grey |
| Gearbox: | MAN 6 VIT | Type of rims (mounted): | Aluminium |
| Transmission: | | Parking lot: | 1514 |
| Fueltype: | Diesel | | |
| Maintenance: | OK | | |
| Maintenance: | 14100.0 | | |
| Maintenance: | 16 december 2027 | | |
| Type of rims (mounted): | Aluminium | | |
| Certificate of Conformity: | Yes | | |
| Category: | Passenger Car | | |
| Registration Certificate Car (BE): | Yes | | |
| Registration Certificate Home (BE): | No | | |

Options

| | | | |
|---------------------------------|------------------------------|------------------------|-------------------|
| Number of keys total: | 2 | Luggage cover: | |
| Cruise Control: | | Front parking sensors: | |
| Steering wheel multifunctional: | | Rear parking sensors: | |
| Seats F heated: | | Type of Tow bar: | No Tow bar |
| Radio multimedia: | | | |
| Type of headlighting: | Headlighting LED | | |
| Type of GPS: | GPS big screen color | | |
| Type of Lining: | Lining fabrics | | |
| Type of climate control: | Autom climate control | | |
| Type of GPS storage: | HD | | |

Limited Technical Inspection

Tyres

| 225/40/18/92 Y | | | | |
|-----------------------|-------|-----------------------|-------|-------------------------|
| Summer tyres: | Fr.L. | Michelin: 4 mm | Fr.R. | Michelin: 5 mm |
| | Re.L. | Uniroyal: 8 mm | Re.R. | Uniroyal: 8 mm |
| Tyre profile depth FL | | | | 4.0 |
| Tyre profile depth FR | | | | 5.0 |
| Tyre profile depth RL | | | | 8.0 |
| Tyre profile depth RR | | | | 8.0 |
| Tyre size FL | | | | 225/40 R 18 92 Y |
| Tyre size FR | | | | 225/40 R 18 92 Y |
| Tyre size RL | | | | 225/40 R 18 92 Y |
| Tyre size RR | | | | 225/40 R 18 92 Y |
| Tyre type FL | | | | Summer |
| Tyre type FR | | | | Summer |
| Tyre type RL | | | | Summer |
| Tyre type RR | | | | Summer |
| Tyre make FL | | | | 261 |
| Tyre make FR | | | | 261 |
| Tyre make RL | | | | 265 |
| Tyre make RR | | | | 265 |

Assistance equipment

| | | | |
|---|------------|-------------|------------|
| Repair kit: | Yes | Compressor: | Yes |
| Number of charging cables (normal): | 0 | | |
| Number of charging cables (rapid charge): | 0 | | |

| | |
|-------------------|----------------|
| Total cost ex VAT | 2439,12 |
|-------------------|----------------|

| | |
|--|-------------|
| Backrest cover FL, Scratch(es), Acceptable | 0,00 |
|--|-------------|



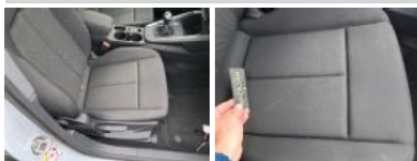
Interior covering A pillar R, Scratch(es), Acceptable 0,00



Backrest cover FR, Scratch(es), Acceptable 0,00



Seat cover FR, Stain, Acceptable 0,00



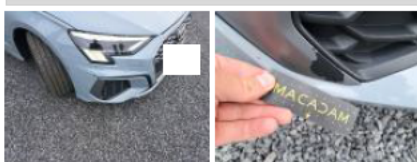
GPS, Not functioning (well), Acceptable 0,00



Bumper F, Broken, Replace and paint 1121,11



Bumper moulding F, Scratch(es), Replace 103,44



Bumper moulding F, Scratch(es), Replace 119,82



Alloy rim FL polished, Scratch(es), Repair and paint (complete) 204,21



Door window FL, Scratch(es), Acceptable 0,00



Alloy rim RL polished, Scratch(es), Acceptable 0,00



Internal boot lining L, Scratch(es), Acceptable 0,00



Internal boot lining R, Scratch(es), Acceptable 0,00



Boot carpet, Scratch(es), Acceptable 0,00



Boot lid covering R, Scratch(es), Acceptable 0,00



Rear window, Scratch(es), Replace 482,12





Bumper R, Scratch(es), Acceptable 0,00



Alloy rim RR polished, Scratch(es), Repair and paint (complete) 204,21



Wing RR, Scratch(es), Acceptable 0,00



Door window FR, Scratch(es), Acceptable 0,00



Outer door handle FR, Scratch(es), Acceptable 0,00



Alloy rim FR polished, Scratch(es), Repair and paint (complete) 204,21



Tyre FR, Tear, Acceptable 0,00

