

Expertise

Protocol number: 45748477
Order No. / Reference: 26530300
Inspection date: 3 Jun 2026

Manufacturer: Mercedes-Benz

Model: C 200 d T 9G-TRONIC

VIN: W1KAH0DB0PF113811



Vehicle details

Manufacturer / Type / Model / Equipment

Mercedes-Benz C 200 d T 9G-TRONIC

Vehicle Identification number W1KAH0DB0PF113811

Mileage (Read) 98,634 km

First registration 4 Jul 2023

Number of holders 1

Power / Engine displacement 120 kw / 1,993 ccm

Fuel type / Cylinder Hybrid Diesel / E / 4

Gearbox / Number of gears Automatic / 9

Type of drive Rear drive

Type of vehicle Station wagon

Colour / colour code Graphitgrau Metallic

Doors / Seats 5 / 5

Upholstery type Cloth

Colour of upholstery Black-Anthracite

Vehicle with smoke odor no



Vehicle details			
Maintenance booklet / proof	Non-existent	Next maintenance in	71 Tag(e)
Key is / should be	2 / 2	FZG documents	ZB#2 (B) was available (copy), ZB#1 (S) was not available.
		Letter No.	GV673280
Previous damage / Accident	Detectable	Repainting	Detectable
Inspection conditions	sufficient	Lifting equipment / pit	yes
Test drive	short drive on the company premises	Engine function test	Performed
Manufacturer key number/ type code number	2222 / BDF 00241		
Emission standard	EURO6;WLTP;AP;PI/CI; M, N1 I	fine dust sticker	
Permitted total weight	2,400 kg	Empty weight	

Tyres

Mounted tyres				
#	Tyre size	Type of tyre	Manufacturer	Tread depth
1)	225/50 R17 94Y	Summer tyres on Light alloy	Goodyear	4mm / 4mm
2)	225/50 R17 94Y	Summer tyres on Light alloy	Goodyear	3mm / 3mm
Additional tyres				
#	Tyre size	Type of tyre	Manufacturer	Tread depth
1)	225/50 R17 94H	Winter tyres on Light alloy	Bridgestone	6mm / 6mm
2)	225/50 R17 94H	Winter tyres on Light alloy	Bridgestone	6mm / 6mm
Replacement				
Typ	Tyre size	Type of tyre	Manufacturer	Tread depth
	Tirefit	Expiration date 04/2028		

Legend: Tread depth information for the left tire is listed first, for the right tire it is listed second on the axle in the direction of travel.



Equipment

Standard equipment

- Airbag for driver and front passenger
- Airbag: Center airbag
- Airbag: Windowbag for driver and front passenger
- Basic services
- Brake assist, active
- Diesel particulate filter
- DYNAMIC SELECT
- ECO start/stop function
- Chassis: AGILITY CONTROL chassis with selective damping system and lowered suspension
- Velour floor mats
- Transmission: 9-speed automatic, 9G-TRONIC
- Rear bumper with diffuser-look insert, black grained
- Interior headliner fabric crystal grey
- KEYLESS-GO start function
- THERMATIC automatic climate control with 1 climate zone
- Front headrests
- Cargo area cover including EASY-PACK safety net
- Steering wheel: Multifunction sports steering wheel in leather
- Package: Storage
- Upholstery: Fabric Tandel
- Radio: MBUX
- Radio accessories: Communication module (LTE) for using Mercedes me connect services
- Remote Services Plus
- Windscreen wipers with rain sensor
- Seats: Rear seat backrests foldable
- Lane Keeping Assist, active
- High-visibility vest for drivers
- Central locking with remote control
- Airbag: Automatic passenger airbag deactivation
- Airbag: Side airbag for driver and front passenger
- Left and right exterior mirrors are heated and electrically adjustable
- black roof rails
- Double cup holder at the front
- EASY-PACK tailgate
- Electronic Stability Program (ESP)
- Electric windows (4-way)
- Front bumper painted in body color
- Speed Limit Assistant
- rear window wiper
- Heated rear window
- ISOFIX child seat attachment with top tether in the rear
- Mechanical child safety lock for the rear doors
- Rear headrests (3)
- Paint finish: Solid
- LED High Performance Headlights
- Mercedes-Benz emergency call system
- Center console in high-gloss black
- Package: Interior lighting package
- Radio: Extended MBUX functions
- Radio accessories: Digital radio (DAB)
- Radio accessories: Central display
- Tire pressure monitoring system (TPMS)
- Wheels: 43.2 cm (17") multi-spoke alloy wheels
- Power steering
- Seats: Front seats mechanically adjustable
- Cruise control
- Electronic immobilizer
- Decorative elements, base foil, instrument panel



Extra equipment

- Active Distance Assist DISTRONIC (Automatically regulates the distance to the vehicle in front.)
- Paint finish: Metallic
- Package: Assistance (Blind Spot Assist: The system can warn you of side collisions with other road users in your blind spot, especially as soon as you activate the turn signal. Even after driving, the system remains vigilant and warns you if you open the door at the wrong moment. An important safety feature – especially for cyclists.)
- Package: AVANTGARDE Exterior (radiator grille with integrated Mercedes star and a chrome-plated louvre, radiator grille frame in chrome - 43.2 cm (17") 5-spoke alloy wheels, high-gloss black paint and gloss coating, 225/50 R 17 on 7 J x 17 ET 44.5 - Dynamic front bumper with centrally positioned trim strip in high-gloss chrome and diamond-pattern air intakes in black. - AGILITY CONTROL suspension with 15 mm lowering and selective damping system. - Strip on the rear side windows in high-gloss black.)
- Package: Infotainment package (MBUX Navigation Premium (hard drive navigation, pre-installation for Live Traffic Information), traffic sign assistant, smartphone integration (connects the mobile phone wirelessly to the multimedia system via Apple CarPlay and Android Auto))
- Wheels: 43.2 cm (17") light alloy wheels in 5-spoke design (black painted and polished with 225/50 R 17 on 7 J x 17 ET 44.5)
- TIREFIT with tire inflation compressor
- Towbar with ESP trailer stabilization
- THERMATIC automatic climate control with 2 climate zones (control via the central display or the climate control unit in the center console; sensor system for detecting, for example, indoor/outdoor temperature, sunlight, humidity, and dew point; automatic recirculation (only in conjunction with navigation system); ventilation system consisting of: 3 center vents and 2 side vents; fine dust activated carbon filter for filtering dust, soot, and pollen; dew point sensor; residual heat function for efficient use of engine waste heat)
- Package: Business (for Avantgarde Exterior (P15) or AMG Line Exterior (P31)) (Mirror Package: Electrically folding exterior mirrors with automatic dimming function, ambient lighting with Mercedes-Benz logo projection - Advanced Comfort Package: Heated seats for driver and front passenger, 4-way lumbar support, seat comfort package - Parking Package: Parking package with reversing camera - Infotainment Package: MBUX Navigation Premium, traffic sign assist, smartphone integration - Larger fuel tank)
- Package: Parking (12 ultrasonic sensors - reversing camera - Active Parking Assist with PARKTRONIC: detects free parking spaces, assisted parking, visual and acoustic warning, display of camera and ultrasonic data in the media display - Cross traffic warning: can provide visual and acoustic warnings when reversing out of a parking space and, if necessary, automatically initiate emergency braking - Reverse maneuvering brake: can trigger a braking process - Drive-away assist)

Brief expert findings

Documents submitted	At the time of the inspection, the vehicle registration certificate Part 2 (title) was available, but the vehicle registration certificate Part 1 (document) was not. (Copy)
VIN comparison	The vehicle identification number (VIN) was read from the vehicle and its conformity with the submitted documents was confirmed by the undersigned during the inspection.
Inspection	The inspection conditions were sufficient for the assessment of the vehicle. Lifting equipment and/or a pit were available for examining the vehicle.
Test drive	A short maneuvering and shunting exercise was carried out on the company premises.
Engine function test	An engine test run was performed.

Value reducing factors

No.	Component group	Description
1	Side panel - rear right side	Elbow - dent(s) - Smooth repair work
2	Boot lid / rear door	Boot lid - dent(s) - Smooth repair work
3	Rear bumper	Rear bumper - Scratched - Repair and paint



Wear and tear

No.	Component group	Description
1	Roof	Roof rail - right side - dent(s) - No deduction
2	Door - front left side	Door edge - Scratch(es) - No deduction
3	Side panel - rear right side	Sill - Scratch(es) - No deduction
4	Vehicle glazing	Windscreen - Stone chips - No deduction
5	Documents	Service book (Digitaler Nachweis) - Missing - No deduction

The vehicle shows signs of wear and tear commensurate with its age and use.

Previous damages

No.	Previous damage	Extent of damage (Net)
1	Front, Side right, Provided by user / customer, from 5 Dec 2023	3.983,55 €

Repainting

No.	Repainting
1	Mudguard - right side, Professionally carried out, Invoice of repair done Non-existent
2	Door - rear right side, Professionally carried out, Invoice of repair done Non-existent
3	Door - front right side, Professionally carried out, Invoice of repair done Non-existent

Paint coat thickness measurement

Mudguard - right side	204 µm	Door - rear right side	170 µm
Door - front right side	194 µm		

Order/Scope of Order

An order was placed to prepare a sales report for the described vehicle. This report includes the following:

- Description of key vehicle information
- Documentation of equipment features
(*Delivery by third-party service providers*)
- Documentation of damage, defects, missing parts
- Documentation of prior damage, unrepaired prior damage, repainting
- A brief visual or functional inspection of the equipment details, if possible.
(*Functional testing of driver assistance systems is not included in the scope of services!*)
- a photographic documentation of the vehicle



Basis for the order

This product is based on the guidelines for vehicle returns and valuations published by Alphabet Fleet GmbH. The expert makes the specific findings in each individual case objectively, within the framework of the prescribed standards, based on their own expertise.

The vehicle inspection takes place in a fully assembled, unassembled state.

Damage or defects that can only be detected during disassembly/diagnostic work or through further investigation remain within the realm of prognostic risk. An increased risk exists due to concealed defects caused by fraudulent misrepresentation and which were not identifiable by the expert.

Damage or defects resulting from normal use or wear and tear of the vehicle will be accepted in accordance with the applicable standard.

There was no explicit identification or monetary consideration of the expected features within the product.

Features which, in their nature and extent, slightly exceed normal use but do not constitute unacceptable damage, will be documented and indicated as signs of wear, if applicable.

Damage or defects that, according to the applicable standard, can no longer be attributed to normal use or wear and tear are listed under "Value Reducing Factors" in the product description.

Depending on the product specification, a monetary ID can be provided. If this takes place, the costs can be 100% d or pro rata depending on the vehicle's age and mileage.

Previous damages

According to available information previous damages were repaired at the vehicle. Traces of repairs, which allow conclusions about the area of repair, were not recognizable during the inspection.

Comments

- Winterradsatz ist kein Bestandteil des Auslieferungsumfangs.



Figure 1: Diagonal front (left)



Figure 2: Diagonal front (right)



Figure 3: Diagonal rear (left)



Figure 4: Diagonal rear (right)



Figure 5: Interior - front



Figure 6: Interior - rear



Figure 7: Instrument cluster



Figure 8: Instrument panel



Figure 9: Interior 360° view



Figure 10: Cargo area



Figure 11: VIN



Figure 12: Mounted tyres



Figure 13: Documents



Figure 14: Documents



Figure 15: Additional tyres

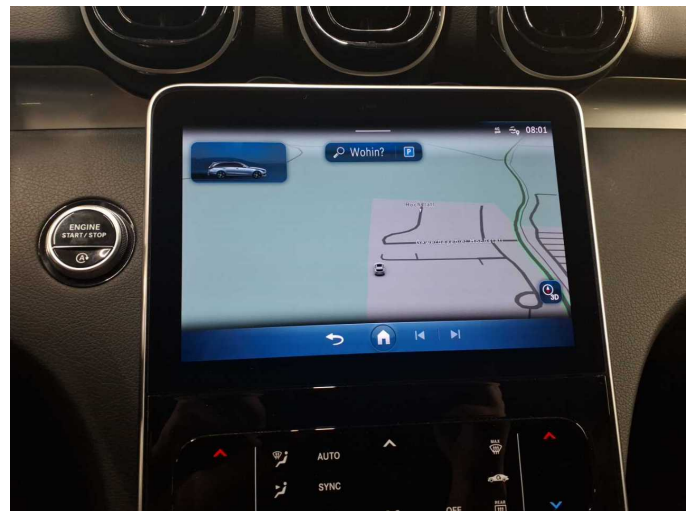


Figure 16: Navigation



Figure 17: Misc.



Figure 18: Misc.



Figure 19: Misc.



Figure 20: Misc.



Figure 21: Misc.

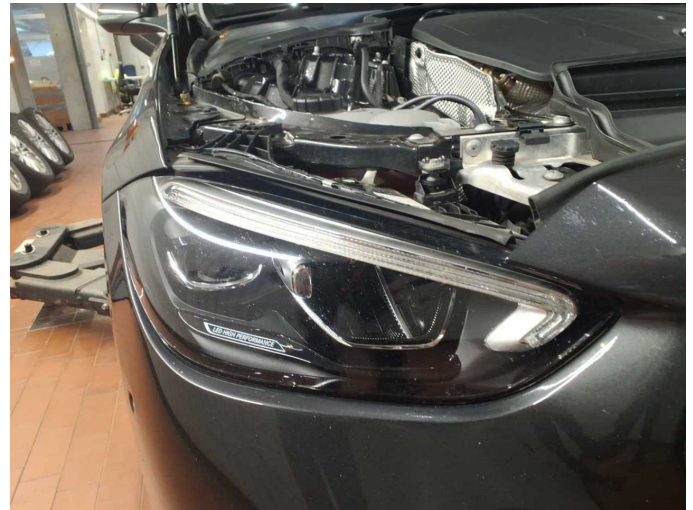


Figure 22: Misc.



Figure 23: Misc.

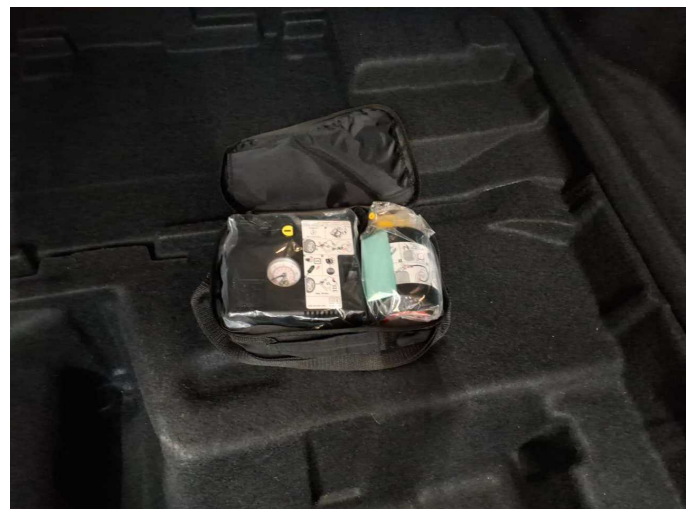


Figure 24: Misc.

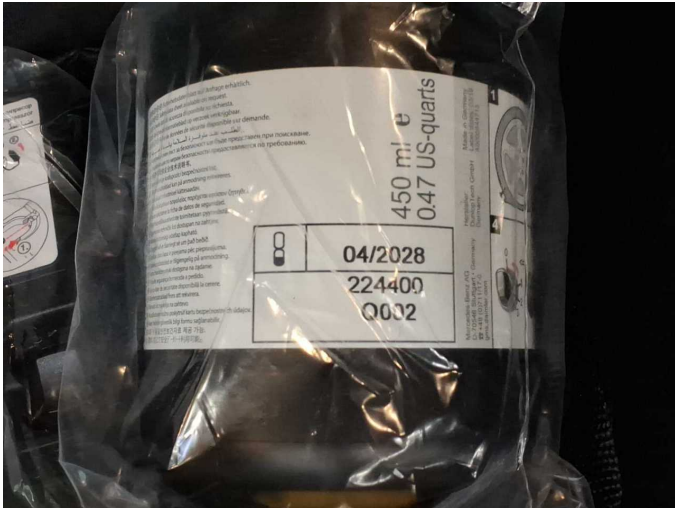


Figure 25: Misc.



Figure 26: Misc.



Figure 27: Misc.



Figure 28: Misc.

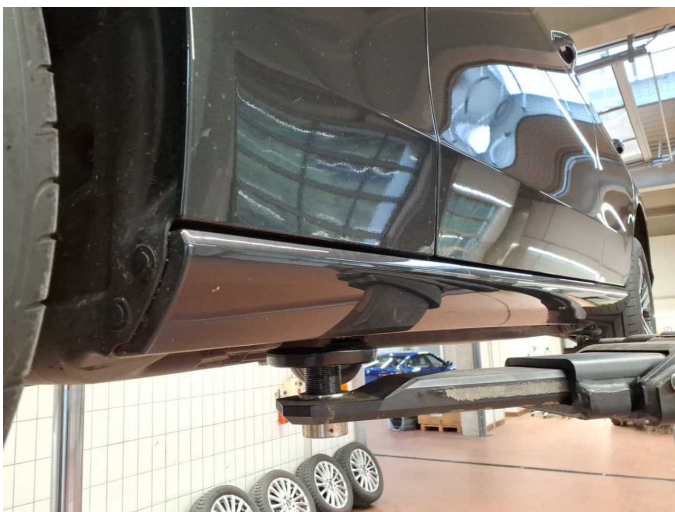


Figure 29: Misc.



Figure 30: Misc.



Damage 1: Side panel - rear right side: Elbow - dent(s) - Smooth repair work



Damage 1: Side panel - rear right side: Elbow - dent(s) - Smooth repair work



Damage 1: Side panel - rear right side: Elbow - dent(s) - Smooth repair work



Damage 2: Boot lid / rear door: Boot lid - dent(s) - Smooth repair work



Damage 2: Boot lid / rear door: Boot lid - dent(s) - Smooth repair work



Damage 2: Boot lid / rear door: Boot lid - dent(s) - Smooth repair work



Damage 2: Boot lid / rear door: Boot lid - dent(s) - Smooth repair work



Damage 3: Rear bumper: Rear bumper - Scratched - Repair and paint



Damage 3: Rear bumper: Rear bumper - Scratched - Repair and paint



Damage 3: Rear bumper: Rear bumper - Scratched - Repair and paint



Damage 3: Rear bumper: Rear bumper - Scratched - Repair and paint



Repainting 1: Mudguard - right side



Repainting 2: Door - rear right side



Repainting 3: Door - front right side