

» Overview

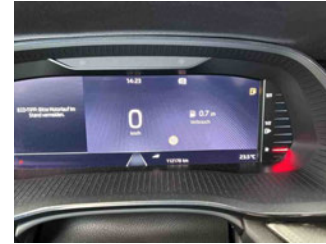
**Order number:** 1002415198  
**Order completed:** 28.04.2026 14:38  
**Report number:** 10510596  
**VIN:** TMBJG8NX5PY086390



Front Left 3/4



Rear Right 3/4



Mileage

## » Vehicle Data

Vehicle category:	Passenger Car
Vehicle type:	EstateCar
Make:	Skoda
Model:	Octavia
Manufacturers and type code:	8004 / AWK
Date of first registration:	15.03.2023
Mileage:	112,178 km
Proof of mileage:	ReadOff
Exterior colour:	Energy Blau
Roof colour:	Energy Blau
Propulsion:	Front
Fuel:	Diesel
Engine size (cc):	1,968 ccm
Performance:	85 kW (116 PS)
Length:	
Height:	
Width:	
Permitted total weight:	
Wheelbase:	
Number of powered axles:	2
Cylinders:	4
Euronorm:	Euro 6
Number of doors:	4
Number of seats:	5
Gearbox:	Automatic 7-speed
Upholstery type:	Lining fabrics
Interior colour:	Schwarz
Number of keys:	2

## » Documents &amp; Maintenance

Statutory inspection date:	03.2026
Registration certificate available:	Yes
Registration certificate received:	Yes
License plate:	Both
Maintenance book:	Digital
Maintenance:	Completed
Maintenance last date:	
Maintenance last mileage:	103,695 km
Remainder until next maintenance:	21,600 KM

"DRIVER ALERT" - driver alert system	Electric auxiliary air heater
"FRONT ASSIST" - with warning and braking reaction to vehicles, pedestrians and cyclists	Electronic differential lock XDS, dynamic traction support
"SMART LINK" (wired and wireless connect)	Electronic immobilizer
12-volt socket in luggage boot	Emergency call system eCall+
3-point seat belt for center rear seat	Emission standard EU6 AP
3-point seat belts in front, with tensioner and height adjustment	Equipment options subset for Germany
3-point seat belts, outer rear with ECE label	Exterior mirror housings and various add-on parts in body color
4 doors	Exterior mirrors: convex on driver side, convex on front passenger side
4-cyl. turbo dies. eng. 2.0 l/85 kW (4V) TDI common rail base engine is T0N/T6M/TL4/TR1/T3Y	Exterior rear view mirrors; glass el. adjusted-auto dimming (driver), heated, housing el. powerf., board.spot(w. KA6)
4-cylinder diesel engine 2.0 l unit 05L.C	External, USB type C, only data socket(s)
7-speed automatic transmission	Freely programmable instrument cluster Medium
8 speakers (passive)	Front fog lamps
Adaptive cruise control (with "follow-to-stop") and speed limiter	Front head restraints
Additional exterior noise suppression	Front stabilizer bar
Additional retro-reflectors (door area)	Front-wheel drive
Additional stone guard body covers	Fuel system for diesel engine
Alloy wheels "TWISTER AERO" 7J x 16" - 4 pcs	Headlight range control
Alternator 140 A	Heated winscreen washer nozzles
Antenna for FM reception only, diversity	Heat-reflecting windshield
Battery 420 A (70 Ah)	Hill start assist
Black decorative trims	Infotainment Columbus w/o VC
Black roof rails	Initial standard fuel filling (6L)
Brake control system for vehicles without electric drive (ESC and electromechanical brake booster)	Installation differentiation for transmission DQ200 -- vehicle components --
Breakaway interior rearview mirror, auto-dimming	Instrument cluster, km/h speedometer
Breakdown kit	Keyless locking and starting system "Keyless Advanced" without SAFELOCK
Center armrest in front	Lane Assist with adaptive lane guidance function + Emergency Assist
Center console	Leather multi-function steering wheel with tiptronic
Child seat anchors f. child seat system i-Size, 2x top tether and child seat anchors in front on front passenger side	LED headlamps
Climatronic with impact pressure control, CFC-free	LED rear combination lamp
Comfort equipment	Left-hand drive
Comfort telephony with LTE and wireless charging	LongLife Service Regime
Curb weight range 1	Luggage compartment cover, sliding
DAB - Digital radio reception	Luggage compartment floor covering "Comfort"
Decorative aluminum inserts	Luggage compartment lighting
Disc brakes in front (Geomet D)	Manual child safety lock
Disc brakes in rear	Manual height adjustment for front seats
Door and side trim panel (umbrella)	Manual in German
Driver knee airbag	Manually adjustable lumbar support in front seats
Driving on the right	Mass damper for steering wheel, XX Hz
Driving profile selection and conventional shock absorber	

Nameplate set in basic style	Standard rear seat release
Navi Columbus + Web Radio	Standard seats in front
Net partition	Standard wheel bolts
No special edition	Start-stop system with regenerative braking
No special purpose vehicle, standard equipment	Storage compartments in trunk
Not hot country	Sun visors with mirror and airbag label on front passenger side
Operating permit, alteration	Suspension range 06 installation control only, no requirement forecast
Operating voltage 12 V	Tailgate/trunk lid release from inside (electrically)
Optional infotainment system (MIB3)	Three rear head restraints
Park distance control in front and rear	Tire pressure monitoring system
Parking brake	Tire suppliers for EU countries
Part set without country-specific prescriptive standard	Tires 205/60 R16 92V
Power windows with comfort operation and circuit breaker	Tool kit
Rear axle weight, type 1	Transport protection film (minimum protection) with additional transport protection measures
Rear exhaust tailpipe (standard)	Trims for alloy wheels
Rear floor panel module, type 4	Two-tone horn
Rear fog light on one side, back-up light on both sides	Type approval country Germany
Rear shock absorption, basic version 1	Unsplit molded headliner
Rear spoiler	Unsplit rear seat bench, split folding backrest, with center armrest
Rear window wiper "AERO"	UWB-capable country and carrier frequency, 433.92 to 434.42 MHz
Refrigerant R1234yf	Vehicle class differentiation -5EN-
Regional code " ECE " for radio	Vehicles without special upgrade measures
Reise	Vent
Remote Access / Remote Access + Online Infotainment	Visual and acoustic seat belt reminder, electric contact in front and rear
Remote Access + Infotainment Online 3 years	Voice control
Seat trim covers in fabric	Wagon/Avant
Separate daytime running light	Weight range 11 installation control only, no requirement forecast
Service indicator 30 000 km or 2 years ( variable )	Wheelbase
Shock absorption in front	Windshield wiper intermittent control with light/rain sensor
Side airbag in front with curtain airbag and interaction airbag in front	With dynamic road sign display
Side and rear windows in heat-insulating glass	With emergency steering support with turn assist
Special identification label for EC for M1 passenger vehicles	With multifunction camera
Special interior noise suppression	Without activated carbon canister with SCR
Speed-related variable steering assist (Servotronic)	Without adapter
Standard battery/alternator capacity	Without add. lights (interior lighting)
Standard bumpers	Without additional front underbody guard
Standard climatic zones	Without additional malfunction display
Standard dashboard	Without additional tires
Standard electronic engine sound	Without alternative drive system
Standard manufacturing sequence	Without auxiliary heater/parking heater
Standard paint coating	Without backrest release for front seats
Standard pedal cluster	
Standard rear axle	

Without bracket  
Without camera systems/accident sensors  
Without Car2X  
Without charging cable  
Without delivery equipment  
Without electric motor (hybrid)  
Without extended safety system  
Without floor mats  
Without folding table on front seat backrest  
Without gearshift knob/handle  
Without headlamp washer system  
Without head-up display  
Without interior light in footwell  
Without lane change assist  
Without light control  
Without locking and starting systems  
Without luggage/load compartment floor  
Without mode 3 charging cable  
Without mud flap  
Without protective film for scuff plate  
Without rear stabilizer bar  
Without roof insert (standard roof)  
Without seat heater  
Without seat ventilation/massage seat  
Without second battery  
Without ski bag  
Without special body measures  
Without speed limiter  
Without storage compartment package/box  
Without supertone system and tone sequence control  
Without tie down straps/net/pocket  
Without trailer hitch

## » Tyres

### MOUNTED TYRES

Make	Location	Position	Type	Rim	Dimensions	Profile depth
Hankook	Front	Left	All season	Aluminium	205/60 R 16 96 V	2.0 mm
Hankook	Front	Right	All season	Aluminium	205/60 R 16 96 V	4.0 mm
Hankook	Rear	Left	All season	Aluminium	205/60 R 16 96 V	5.0 mm
Hankook	Rear	Right	All season	Aluminium	205/60 R 16 96 V	5.0 mm

**Permitted:** Yes

**Roadworthy:** No

### SPARE/EMERGENCY TYRE & ACCESSORIES

**Toolkit present:** Yes

**Repair kit present:** Yes

**Repair kit expiration date:** 11.2026

**Compressor present:** Yes

## » Devaluation Factors

Nr	Location	Damage type	Repair type
1	Bonnet	Dent(s) and scratch(es)	Repair and paint (complete)
2	Preparationtime metal painting	Paint preparation	Execute
3	Roof	Dent(s)	Paintless dent repair
4	Inner door sill FR	Dent(s) and scratch(es)	Repair and paint (complete)
5	Tyre FR	Worn	Replace
6	Tyre FL	Worn	Replace
7	Bumper FR	Scratch(es)	Smart repair
8	MOT certificate	Expired	Renew
9	Engine insulation	Damaged	Replace
10	Grille frame	Broken	Replace
11	Alloy rim FR	Scratch(es)	Visual depreciation
12	Door RR	Scratch(es)	Touch up

## » Usage Damages

Nr	Location	Damage type	Repair type
1	Side wall RL	Dent(s)	Acceptable

**» Commercial devaluation**

<b>Known previous damages:</b>	Yes
<b>Previous damages detectable:</b>	No
<b>Repainting present:</b>	Yes
<b>Repainting professionally executed:</b>	Yes
<b>Paint thickness measurement performed:</b>	Yes - no abnormalities/deviations

**PAINTTHICKNESS MEASUREMENT RESULTS**

The measured values were in the usual range.

At least 3 measurements were carried out per component.

**» Notes On The Assessment****Details of the assignment and the scope of the assessment:**

The order was placed to prepare a condition report on the described vehicle.

The vehicle condition assessment was carried out in accordance with the order on the basis of the standards for vehicle assessments specified by the client. The expert makes the findings in the individual case on the basis of his own expertise and at his own expert discretion.

**Vehicle identification:**

TMBJG8NX5PY086390

VIN checked and matches documentation

**Vehicle condition:**

Average general condition

**Inspection condition:**

Sufficient

**Lifting platform/lifting equipment used:**

Yes

**Testdrive carried out:**

Yes

**Engine test carried out:**

Yes

» **Remarks**

This copy was generated electronically. It is valid without an original signature.

» Commercial Pictures



Front Left 3/4



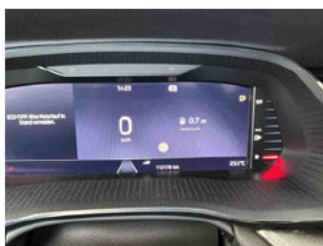
Front Right 3/4



Rear Left 3/4



Rear Right 3/4



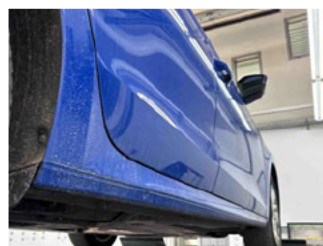
Mileage



Tools



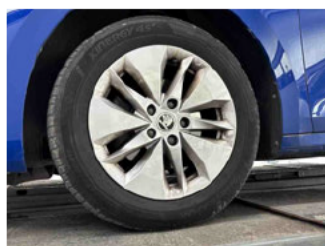
Sill outer L



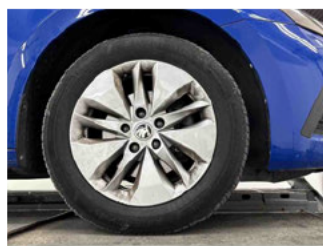
Sill outer R



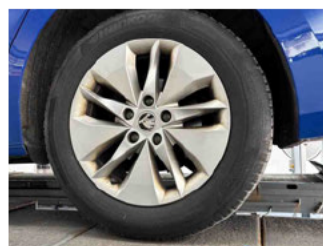
Chassis nr



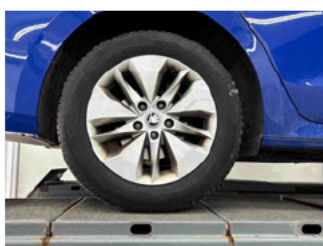
Wheel FL



Wheel FR



Wheel RL



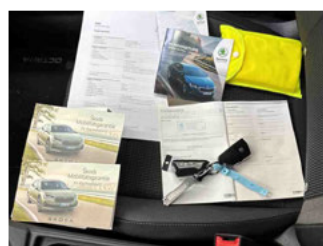
Wheel RR



Central console



Engine compartment



Documents



Interior arrangement



Registration Certificate



History Maintenance



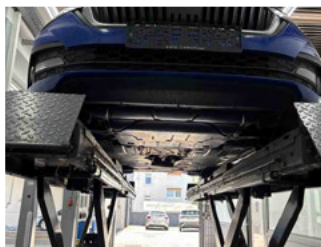
Interior - front



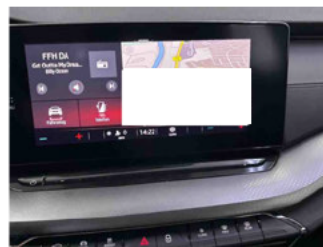
Interior - rear



Tirefit expiration date



Underbody scan

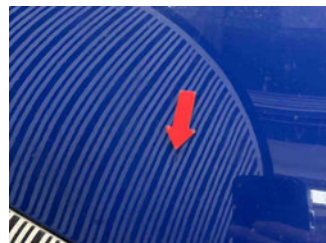
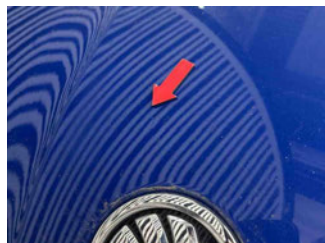
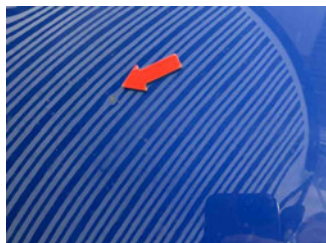
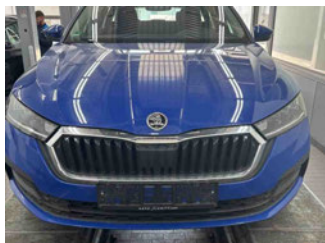


GPS/Radio

## » Devaluation Damages

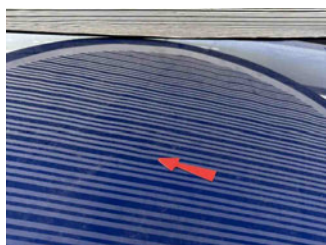
### DEVALUATION FACTORS

1 - Bonnet - Dent(s) and scratch(es) - Repair and paint (complete)



2 - Preparationtime metal painting - Paint preparation - Execute

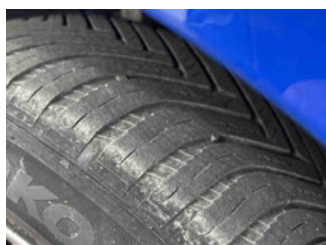
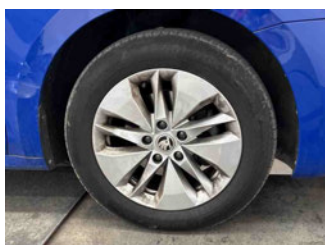
3 - Roof - Dent(s) - Paintless dent repair



4 - Inner door sill FR - Dent(s) and scratch(es) - Repair and paint (complete)



5 - Tyre FR - Worn - Replace



6 - Tyre FL - Worn - Replace



7 - Bumper FR - Scratch(es) - Smart repair



8 - MOT certificate - Expired - Renew

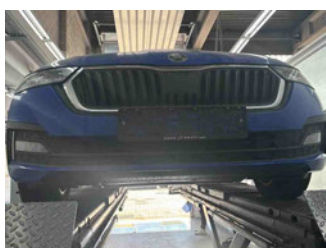
Comment	Fahrzeug mit Wartungsvertrag
---------	------------------------------



9 - Engine insulation - Damaged - Replace



10 - Grille frame - Broken - Replace



11 - Alloy rim FR - Scratch(es) - Visual depreciation



12 - Door RR - Scratch(es) - Touch up



**USAGE DAMAGES**

1 - Side wall RL - Dent(s) - Acceptable

