

Expertise

Protocol number: 46135399
Order No. / Reference: 26426718
Inspection date: 19 Jun 2026

Manufacturer: Audi

Model: Q5 50 TFSIe quattro S tronic S line

VIN: WAUZZZFY3P2079092



Vehicle details

Manufacturer / Type / Model / Equipment

Audi Q5 50 TFSIe quattro S tronic S line

Vehicle Identification number WAUZZZFY3P2079092

Mileage (Read) 93,283 km

First registration 10 May 2023

Number of holders 1

Power / Engine displacement 195 kw / 1,984 ccm

Fuel type / Cylinder Hybr.B/E ext.auf / 4

Gearbox / Number of gears Automatic / 7

Type of drive All-wheel drive

Type of vehicle SUV

Colour / colour code Mythossschwarz Metallic

Doors / Seats 5 / 5

Upholstery type Cloth / leather combination

Colour of upholstery Black-Red



Vehicle details

Maintenance booklet / proof	digital proof / complete	Next maintenance in	13,800 km
Last service on / at	03/2026 at 89,309 km		
Key is / should be	2 / 2	FZG documents	ZB#2 (B) was available (copy), ZB#1 (S) was not available.
		Letter No.	GS357905
Previous damage / Accident	Detectable	Repainting	None detectable
Inspection conditions	sufficient	Lifting equipment / pit	No
Test drive	Not performed	Engine function test	Performed
Manufacturer key number/ type code number	0588 / BYJ 00096		
Emission standard	EURO6;WLTP;AP;PI/CI; M, N1 I	fine dust sticker	
Permitted total weight	2,660 kg	Empty weight	

Tyres

Mounted tyres

#	Tyre size	Type of tyre	Manufacturer	Tread depth
1)	255/40 R21 102Y	Summer tyres on Light alloy	Continental	6mm / 6mm
2)	255/40 R21 102Y	Summer tyres on Light alloy	Continental	6mm / 6mm

Additional tyres

#	Tyre size	Type of tyre	Manufacturer	Tread depth
1)	255/45 R20 101V	Winter tyres on Light alloy	Continental	5mm / 5mm
2)	255/45 R20 101V	Winter tyres on Light alloy	Continental	5mm / 5mm

Legend: Tread depth information for the left tire is listed first, for the right tire it is listed second on the axle in the direction of travel.



Equipment

Standard equipment

- Airbag for driver and front passenger
 - Acoustic vehicle warning system
 - "quattro" all-wheel drive with ultra technology
 - Traction control (ASR)
 - Audi drive select
 - Audi pre sense city
 - Electrically adjustable and heated exterior mirrors
 - Hill descent control
 - Fabric headliner
 - Black roof rails with roof rack recognition
 - Tachometer
 - Parking assistance plus
 - Electromechanical parking brake
 - Electronic Differential Lock (EDS)
 - Chassis: Standard chassis
 - Remote key (without Safe-Lock)
 - Electrically opening and closing tailgate
 - Transmission: S tronic 7-speed
 - PHEV hybrid drive system
 - Interior mirror dimming
 - Manual child lock
 - boot floor mat
 - 3-zone automatic climate control
 - Front headrests
 - Charging cable with industrial plug CEE 16A / 400V / 6 h / long + straight
 - Mode 3 charging cable for public charging 22 kW (charging cable for charging at public AC charging stations (Type 2). The cable connects the charging station to the vehicle's AC charging port and enables a charging power of up to 7.4 kW at your vehicle. A current of up to 32 A can be transmitted per phase.)
 - Non-smoking version
 - Wheel: On-board tools (excluding jack)
 - Wheel: Tire repair kit
 - Seat belts
 - Seats: Front seats manually adjustable
 - Lane Departure Warning
 - Start-stop system
 - Partition net (to be attached to the body or to the folded-down rear seat backrest, helpful whether the rear seat backrest is upright, folded down on one side or completely folded down, removable)
 - Glazing: Side and rear panes are made of heat-insulating glass.
 - black decorative trim
- Airbag: Front side airbags and head airbag system
 - Accent areas matte black
 - Anti-lock braking system (ABS)
 - Audi connect emergency call & service with Audi connect Remote & Control
 - Audi virtual cockpit
 - Exterior mirror housings in body color
 - third brake light
 - Roof edge spoiler
 - Decorative inlays Micrometallic silver
 - e-tron compact charging system
 - Door sill trims with aluminum inlay at the front, illuminated, with S lettering
 - Electronic Stability Control (ESC)
 - Electric windows front and rear
 - front and rear floor mats
 - Cruise control system including speed limiter
 - rear window wiper
 - Interior lighting
 - Camera-based traffic sign recognition
 - ISOFIX child seat attachment and Top Tether for the outer rear seats
 - Rear headrests (3)
 - Charging cable with household plug type E/F (mains connection cable (length 1.6 m, current 10 A) with angled household plug)
 - Stainless steel loading sill protector
 - LED taillights
 - Steering wheel: Leather steering wheel in 3-spoke design with multifunction plus
 - front center armrest
 - Model designation according to new performance labeling
 - Otto particulate filter
 - Wheel: Tire pressure monitoring system
 - Electromechanical power steering
 - Seats: Rear bench seat plus
 - Front sun visor
 - Stationary air conditioning
 - Phone: Bluetooth interface
 - First aid kit with warning triangle
 - Glazing: Windscreen in heat-insulating and acoustic glazing
 - Glazing: Clear glass
 - Electronic immobilizer
 - Central locking with remote control



Extra equipment

- ACC system
- Audi exclusive piano black decorative inlays (for dashboard, door panels and center console)
- Brake calipers, painted red (on front and rear axles)
- Chassis: adaptive air suspension (electronically controlled air suspension with continuously adaptive damping system at all 4 wheels, automatically regulates vehicle level and damping, including level control and manual lift function - setting of various modes via Audi drive select - with 5-link lightweight front axle; controlled shock absorbers and air springs; stabilizer; front axle carrier rigidly bolted to the body - with 5-link lightweight rear axle with independent wheel suspension; controlled shock absorbers and air springs, rear axle carrier)
- Comfort center armrest at the front (adjustable in tilt and longitudinally sliding or completely foldable)
- Exterior mirror housings in carbon fiber
- Front seat heating (for driver and front passenger side, individually adjustable in 3 stages via direct selection button on the climate control unit)
- Glazing: Sun protection glazing, tinted (rear window, rear door and side windows tinted)
- Head-up display (On request, the speed and other driver-relevant information from optional equipment such as assistance systems and navigation, as well as warning messages, are projected into the driver's direct field of vision - The multi-color display enables a high-contrast presentation - The projection surface of the discreetly integrated head-up display in the instrument panel is adjustable in height and brightness)
- Headrests: variable headrests for front seats (with manual adjustment of headrest height and distance)
- Interior elements in synthetic leather (lower center console and armrest in the doors in synthetic leather)
- LED headlights: Matrix LED headlights with dynamic light display and dynamic turn signals (multifunction camera - headlight cleaning system). Front and rear LED headlights with the following functionalities: - visually enhanced daytime running lights - low beam - high beam - position lights - turn signals - cornering lights - all-weather lights - maneuvering lights - motorway lights - automatic dynamic headlight range control - static cornering lights - dynamic light display for coming home/leaving home functions.
- Paint finish: Metallic
- Parking Assistance Package (surround view cameras - Parking Assistant with Parking Aid Plus: The Parking Assistant with Parking Aid Plus detects suitable parking spaces. The driver is actively supported during parking maneuvers through targeted steering inputs. A visual display warns of obstacles. Within the detection range of the ultrasonic sensors, the Parking Assistant helps in finding a suitable parking space along the roadway. The system supports the driver during parking maneuvers through targeted steering inputs.)
- Ambient Lighting Package Plus (in addition to the standard interior lighting (LED): - Approach lighting in the exterior door handles - Entry lights on the underside of the front and rear doors (white) - Footwell lighting front and rear (white) - Interior door handles front and rear (white) - Ambient lighting in the front and rear doors, multi-colored - Illuminated storage compartment below the instrument panel - Ambient lighting on the front center console, multi-colored - Illuminated decorative inserts in the instrument panel and doors, multi-colored)
- Audi active lane assist including camera-based traffic sign recognition in conjunction with the Business package (includes: Audi active lane assist, high-beam assist, camera-based traffic sign recognition, lane keeping assist, which comfortably supports the driver in staying in their lane within system limits (functional range from approx. 65 to a maximum of 250 km/h). If the system is activated and ready, and the driver has not activated the turn signal, Audi active lane assist helps to guide the vehicle within the detected lane markings by making gentle corrective steering interventions.)
- Audi Sport red stitching (seat covers with crimson red contrast stitching - front center armrest in black leather with crimson red contrast stitching - black Dinamica door panel inserts - 3-spoke leather steering wheel with crimson red contrast stitching - black gearshift/selector lever knob, black fine nappa leather selector lever boot with crimson red contrast stitching - black floor mats and piping with crimson red contrast stitching - dark brushed aluminum decorative inlays - illuminated aluminum door sill trims with S logo - door panels and center console)
- Black Optics Package Plus (Audi rings front and rear as well as model designation on the rear in black - black accents in the area of the Audi Singleframe - black accents in the area of the trim strips on the side windows and the front and rear bumpers - exterior mirror housings in black (optionally available) - roof rails in black (not for Sportback))
- Business Package (Audi phone box - MMI Navigation plus (incl. driver information system with color display) - Audi virtual cockpit - 3-spoke leather steering wheel with multifunction plus - Heated front seats - Automatically dimming interior mirror - Electrically adjustable, heated and folding exterior mirrors, automatically dimming on both sides incl. curb view function for the passenger mirror - High-beam assistant - Manual sunshade for rear door windows)
- Child Safety Package (ISOFIX child seat attachment for the front passenger seat with deactivation switch for the passenger airbag and electric child safety lock in the rear. The recommended child seats from Audi Genuine Accessories are available from your Audi Partner.)



- Radio accessories: Audi sound system (10 speakers including center speaker and subwoofer - 6-channel amplifier - total output of 180 watts)
- S line interior package (sports seats in front - black cloth/leather combination with S embossing on the seatbacks - 3-spoke leather steering wheel with multifunction plus in black (perforated leather steering wheel grips) with S emblem; with contrast stitching, color-coordinated with the respective interior color; with shift paddles - matte brushed aluminum trim - glossy black accents - illuminated front door sills with aluminum inserts - stainless steel pedals and footrest (not for plug-in hybrids) - front and rear floor mats - black cloth headliner)
- Seat covers in Dinamica Frequency microfiber/leather with S embossing (seat center panel in black Frequency microfiber - seat side bolsters, headrest center panel and center armrest in black leather with crimson contrast stitching - S embossing in the backrests of the front seats - rear center armrest surface in synthetic leather)
- Wheel: Alloy wheels, 21" 5-arm Avius, matte black, diamond-turned (8.5 J x 21, tires 255/40 R 21)
- Winter wheel set black
- Comfort key with sensor-controlled luggage compartment unlocking including anti-theft alarm system (The comfort key offers convenient control for access and engine start authorization without having to actively use the vehicle key. With the electronic access and drive authorization system, all doors and the luggage compartment lid can be opened via wireless communication between the key and the vehicle. The engine is started and stopped using the engine start/stop button.)
- Seats: Electrically adjustable front seats with memory function for the driver's seat and exterior mirrors (4-way lumbar support for the front seats - electrically adjustable, heated and folding exterior mirrors, automatically dimming on both sides, with memory function - electrically adjustable front seats with memory function for the driver's seat)
- Telephone: Smartphone Interface in conjunction with Business Package or MMI Navigation (The smartphone interface (Android Auto and Apple CarPlay) connects your smartphone to your Audi and seamlessly displays your smartphone content directly on the MMI display via USB. Navigation, telephony, music, and selected third-party apps can be conveniently controlled via the MMI touchscreen and your smartphone's voice control. The connection can be established either using a suitable USB cable or wirelessly.)

Brief expert findings

Documents submitted	At the time of the inspection, the vehicle registration certificate Part 2 (title) was available, but the vehicle registration certificate Part 1 (document) was not. (Copy)
VIN comparison	The vehicle identification number (VIN) was read from the vehicle and its conformity with the submitted documents was confirmed by the undersigned during the inspection.
Inspection	The inspection conditions were sufficient for the assessment of the vehicle. No lifting equipment or pit was available for inspecting the vehicle. Therefore, inspection of the vehicle's underside was only possible to a limited extent.
Test drive	No test drive/shunting maneuver was carried out during the inspection of the vehicle.
Engine function test	An engine test run was performed.

Value reducing factors

No.	Component group	Description
1	Door - rear left side	Door - Scratched - Smart repair
2	Rear bumper	Spoiler (& Lackschaden) - Deformed - Replace
3	Rear bumper	Rear bumper - Scratched - Repair and paint
4	Wheel / tyres	Alloy rim - front right side (Mit Materialabtrag) - Scratched - Replace

Wear and tear

No.	Component group	Description
1	Bonnet	Bonnet - Stone chips - No deduction
2	Vehicle glazing	Windscreen - Stone chips - No deduction
3	Interior	Interior - Soiled - No deduction

The vehicle shows signs of wear and tear commensurate with its age and use.



Accident damages

No. Accident

1 Front

Order/Scope of Order

An order was placed to prepare a sales report for the described vehicle. This report includes the following:

- Description of key vehicle information
- Documentation of equipment features
(*Delivery by third-party service providers*)
- Documentation of damage, defects, missing parts
- Documentation of prior damage, unrepaired prior damage, repainting
- A brief visual or functional inspection of the equipment details, if possible.
(*Functional testing of driver assistance systems is not included in the scope of services!*)
- a photographic documentation of the vehicle

Basis for the order

This product is based on the guidelines for vehicle returns and valuations published by Alphabet Fleet GmbH. The expert makes the specific findings in each individual case objectively, within the framework of the prescribed standards, based on their own expertise.

The vehicle inspection takes place in a fully assembled, unassembled state.

Damage or defects that can only be detected during disassembly/diagnostic work or through further investigation remain within the realm of prognostic risk. An increased risk exists due to concealed defects caused by fraudulent misrepresentation and which were not identifiable by the expert.

Damage or defects resulting from normal use or wear and tear of the vehicle will be accepted in accordance with the applicable standard.

There was no explicit identification or monetary consideration of the expected features within the product.

Features which, in their nature and extent, slightly exceed normal use but do not constitute unacceptable damage, will be documented and indicated as signs of wear, if applicable.

Damage or defects that, according to the applicable standard, can no longer be attributed to normal use or wear and tear are listed under "Value Reducing Factors" in the product description.

Depending on the product specification, a monetary ID can be provided. If this takes place, the costs can be 100% d or pro rata depending on the vehicle's age and mileage.

Previous damages

Non-repaired previous damages were found at the vehicle. The necessary repair costs are listed in the expert report or if necessary, are listed in detail in a separately enclosed repair cost calculation.

Comments

- Die Unterbodenbesichtigung war nur ebenerdig & eingeschränkt möglich. Mehrkosten möglich.



Figure 1: Diagonal front (left)



Figure 2: Diagonal front (right)



Figure 3: Diagonal rear (left)



Figure 4: Diagonal rear (right)



Figure 5: Interior - front



Figure 6: Interior - rear



Figure 7: Instrument cluster



Figure 8: Instrument panel



Figure 9: Interior 360° view



Figure 10: Cargo area



Figure 11: VIN



Figure 12: Mounted tyres



Figure 13: Documents



Figure 14: Documents



Figure 15: Additional tyres



Figure 16: Navigation



Figure 17: Misc.



Figure 18: Misc.



Figure 19: Misc.



Figure 20: Misc.



Figure 21: Misc.

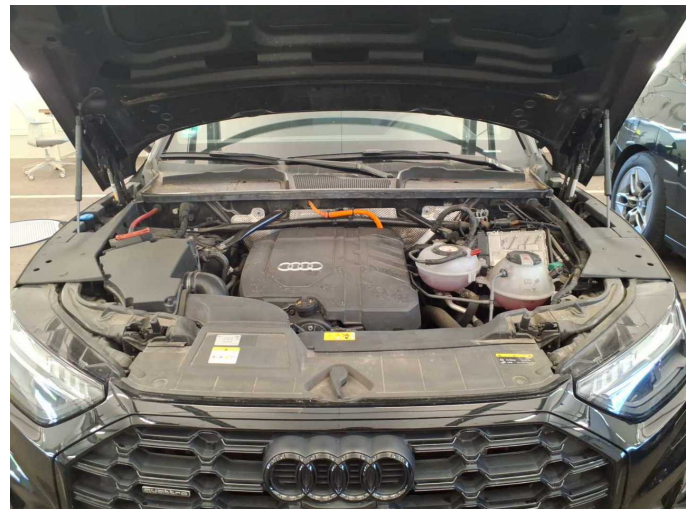


Figure 22: Misc.



Figure 23: Misc.

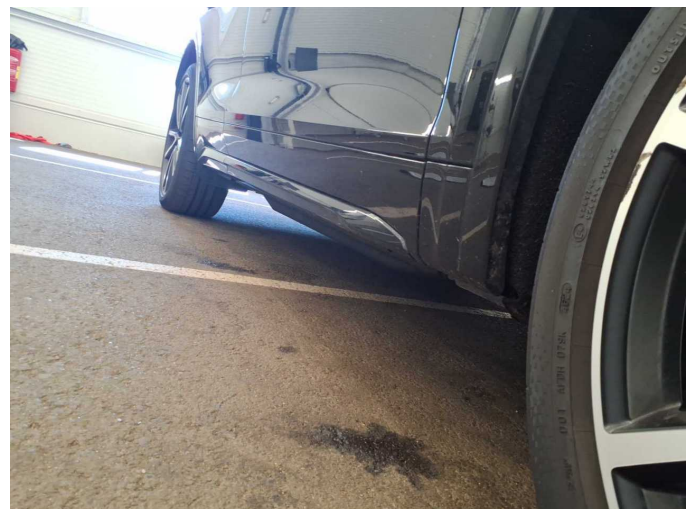


Figure 24: Misc.



Figure 25: Misc.



Figure 26: Misc.



Figure 27: Misc.

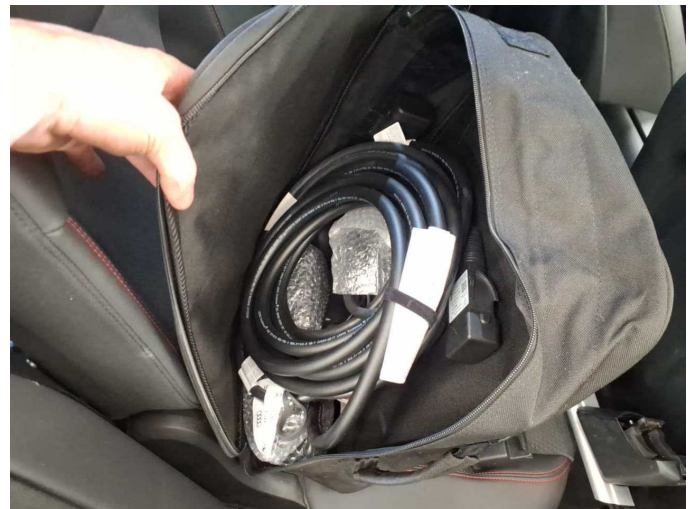


Figure 28: Misc.



Figure 29: Misc.



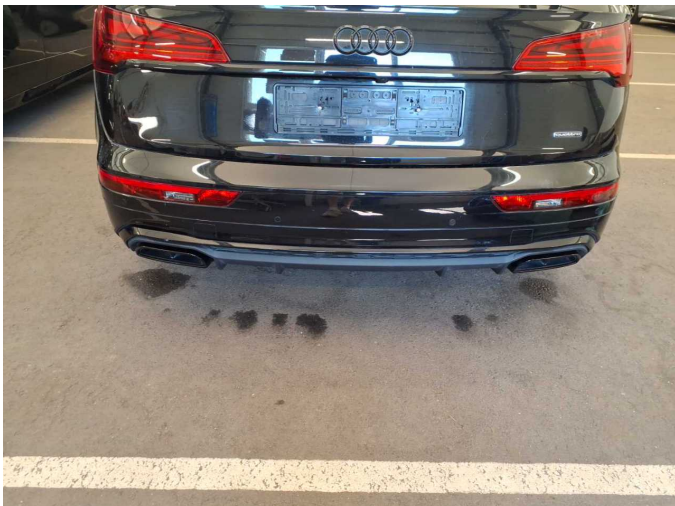
Figure 30: Misc.



Damage 1: Door - rear left side: Door - Scratched - Smart repair



Damage 1: Door - rear left side: Door - Scratched - Smart repair



Damage 2: Rear bumper: Spoiler (& Lackschaden) - Deformed - Replace



Damage 2: Rear bumper: Spoiler (& Lackschaden) - Deformed - Replace



Damage 2: Rear bumper: Spoiler (& Lackschaden) - Deformed - Replace



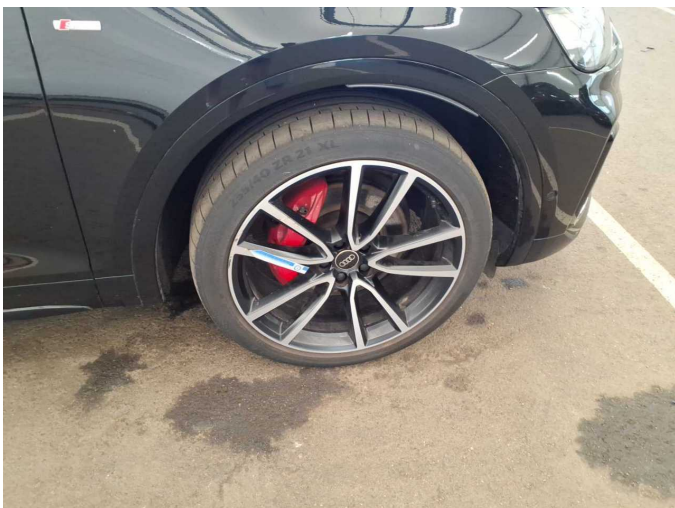
Damage 3: Rear bumper: Rear bumper - Scratched - Repair and paint



Damage 3: Rear bumper: Rear bumper - Scratched - Repair and paint



Damage 3: Rear bumper: Rear bumper - Scratched - Repair and paint



Damage 4: Wheel / tyres: Alloy rim - front right side (Mit Materialabtrag) - Scratched - Replace



Damage 4: Wheel / tyres: Alloy rim - front right side (Mit Materialabtrag) - Scratched - Replace



Accident 1: Front



Accident 1: Front



Accident 1: Front



Accident 1: Front



Accident 1: Front



Wartungshistorie

(gemäß Auftraggeber Informationen)

Fahrgestellnummer: WAUZZZF3P2079092
Hersteller / Modell: AUDI AUDI Q5 50 TFSle quattro S tronic S line

Datum	KM-Stand	Beschreibung
17.03.2026	89.309	Luftfiltereinsatz ern; Regelwartungsdienst
20.11.2025	84.023	Motoröl b. Wartung; Ölfilter ern; Ölwechsel; Wartung Sonstiges
28.05.2025	71.073	Bremsflüssigkeit; Bremsflüssigkeit ern
03.12.2024	59.296	Getriebeöl ern/prüfen; Motoröl b. Wartung; Ölfilter ern; Regelwartungsdienst; Wartung Sonstiges; Zündkerzen ern
11.04.2024	37.156	Motoröl b. Wartung; Ölfilter ern; Ölwechsel; Wartung Sonstiges
15.02.2024	31.283	Regelwartungsdienst
09.11.2023	20.296	Motoröl b. Wartung; Ölfilter ern; Ölwechsel; Wartung Sonstiges