

Expertise

Protocol number: 46310946
Order No. / Reference: 26543068
Inspection date: 1 Jul 2026

Manufacturer: Volkswagen

Model: ID.4 Performance Upgrade Pro

VIN: WVGZZZE2ZPE020296



Vehicle details

Manufacturer / Type / Model / Equipment

Volkswagen ID.4 Performance Upgrade Pro

Vehicle Identification number WVGZZZE2ZPE020296

Mileage (Read) 61,942 km

First registration 21 Dec 2022

Number of holders 1

Next periodical technical inspection 01/2028
(Report on hand)

Power / Engine displacement 70 kw / 0 ccm

Fuel type / Cylinder Electric / 0

Gearbox / Number of gears Direct drive / 1

Type of drive Rear drive

Type of vehicle SUV

Colour / colour code Blue Dusk Metallic

Doors / Seats 5 / 5

Upholstery type Alcantara / Leather

Colour of upholstery Black-Dark grey

Vehicle with smoke odor no



Vehicle details

Maintenance booklet / proof	digital proof / complete	Next maintenance in	165 Tag(e)
Last service on / at	12/2024 at 32,381 km		
Key is / should be	2 / 2	FZG documents	ZB#2 (B) was available (copy), ZB#1 (S) was not available.
		Letter No.	GP913422
Previous damage / Accident	None detectable	Repainting	None detectable
Inspection conditions	sufficient	Lifting equipment / pit	yes
Test drive	Not performed	Engine function test	Performed
Manufacturer key number/ type code number	0603 / CLQ 00105		
Emission standard	2017/1151;WLTP;reine Elektrofz	fine dust sticker	
Permitted total weight	2,540 kg	Empty weight	

Tyres

Mounted tyres				
#	Tyre size	Type of tyre	Manufacturer	Tread depth
1)	235/45 R21 104T	Summer tyres on Light alloy	Hankook	5mm / 5mm
2)	255/40 R21 102T	Summer tyres on Light alloy	Hankook	5mm / 5mm
Additional tyres				
#	Tyre size	Type of tyre	Manufacturer	Tread depth
1)	235/55 R19 101T	Winter tires (with run-flat tires) on Light alloy	Pirelli	6mm / 6mm
2)	255/50 R19 103T	Winter tires (with run-flat tires) on Light alloy	Pirelli	7mm / 7mm

Legend: Tread depth information for the left tire is listed first, for the right tire it is listed second on the axle in the direction of travel.



Equipment

Standard equipment

- 2 USB-C ports on the front
- Airbag for driver and front passenger, with front passenger airbag deactivation
- Ambient lighting, 10 colors
- Electrically adjustable, folding and heated exterior mirrors
- Car2X
- e-Sound
- ESP Electronic Stability Program
- Speed limiter
- Back window, heater
- Interior mirror automatically dimming
- "Climatronic" air conditioning system
- Mode 3 Type 2 charging cable, 16 A
- Charging: 125 kW DC charging power (direct current)
- Steering wheel: Multifunction steering wheel with touch controls
- Navigation system "Discover Pro"
- Emergency call service
- Package: Infotainment Package
- Radio "Ready 2 Discover"
- Radio accessories: 6 + 1 speakers
- Wheels: Steel wheels (4) 8 J x 19
- Keyless Start system
- Seat belts: Three-point automatic seat belts at the front with height adjustment and belt tensioner
- Seats: Rear bench seat undivided, backrest asymmetrically split and foldable
- Telephone interface
- First aid kit, warning triangle and high-visibility vest
- Electronic immobilizer
- Central locking including remote control
- Turning brake function and evasive steering support
- Airbags: Front and rear head airbags, front side airbags, center airbag
- App-Connect Wireless for Apple CarPlay and Android Auto
- third brake light
- black roof rails
- Parking assistance
- Driving profile selection
- Transmission: 1-speed automatic
- rear window wiper
- ISOFIX mounting points for child car seats
- Front and rear headrests (5)
- Charging: 11 kW AC charging power (alternating current)
- LED headlights with automatic headlight control
- Makeup mirrors in the sun visors
- Fatigue detection
- Emergency braking assistant "Front Assist" with pedestrian and cyclist detection
- Upholstery: Seat center panels of the front seats and the outer rear seats in "Matrix" fabric
- Tire pressure monitoring system
- LED taillights
- electromechanical power steering
- Seats: Armrest for front seats
- Seats: Driver's seat height adjustable
- Voice control
- Lane keeping assistant "Lane Assist"
- Ambient lighting with logo projection
- Traffic sign recognition
- Green thermal insulation glazing, sides and rear



Extra equipment

- Interior Style "Plus" Platinum Grey with black steering wheel (30-color ambient lighting, electrically adjustable, folding, and heated exterior mirrors, passenger-side mirror dipping function, ergoActive front seats with electrical adjustment, memory function, sliding thigh support, pneumatically adjustable lumbar support in the front, massage function, multifunction leather steering wheel, heated, touch-operated pedals in "Play/Pause" design, asymmetrically split-folding rear seat backrest, pass-through, center armrest, ArtVelours microfleece seats, heated front seats, ambient lighting)
- Package: Design Package "Plus" (3D LED taillights with dynamic turn signals - Dynamic Light Assist high beam control for LED matrix headlights - IQ.LIGHT - LED matrix headlights with automatic headlight control, bad weather light, welcome function - Illuminated strip between the headlights - Panoramic roof - Laminated safety glass for front side windows; tinted rear window and rear side windows)
- Package: Comfort Package "Plus" in conjunction with Interior Top Sport "Plus" or Style (2 USB-C interfaces in the front, 2 USB-C charging ports on the rear center console - Windscreen in laminated safety glass, wirelessly heated and infrared-reflecting, noise-reducing - Luggage net - Luggage compartment floor - "Air Care Climatronic" air conditioning with active combination filter, stationary climate control and 3-zone temperature control - Variable center console with interchangeable inserts for cup holders and storage compartments - Cargo net partition - Rain sensor - Automatically heated front windscreen washers - Heated front seats)
- Heat pump for range optimization
- Paint finish: Metallic
- Package: Assistance Package "Plus" including "IQ.DRIVE" in conjunction with Interior Top Sport "Plus" and Style ("Easy Open & Close" - tailgate with sensor-controlled opening and closing, with remote release; Adaptive Cruise Control "Stop & Go", with speed limiter; Anti-theft alarm with interior, backup horn and tow-away function; Driving Assistance "Travel Assist", Lane Keeping Assist "Lane Assist" and "Emergency Assist"; Multifunction leather steering wheel; Parking Assist "Park Assist Plus"; Precise occupant protection; Keyless locking and start system "Keyless Access", with Safe Security; Lane Change Assist "Side Assist"; Surround view "Area View" including reversing camera.)
- Package: Infotainment Package "Plus" (Head-up display - Navigation system "Discover Pro": 23.4 cm touchscreen, map with 2D display, traffic sign recognition, points of interest, App-Connect Wireless, voice control - Radio "Ready 2 Discover Max": DAB+ digital radio reception, diversity antenna for FM reception - Telephone interface "Comfort" with inductive charging function including hands-free system, Bluetooth audio, external antenna connection with LTE support - Sound system, 6 loudspeakers, digital channel amplifier, subwoofer, 450 W)
- Package: Sport package "Plus" (Adaptive chassis control DCC incl. driving profile selection - progressive steering)
- Wheels: Alloy wheels (4) "Narvik" 8.5 J x 21 front, 9 J x 21 rear, in black / diamond-turned (wheels in black, diamond-turned surface - Airstop tires 235/45 R 21 front, Airstop tires 255/40 R 21 rear - wheel locks with enhanced theft protection)

Brief expert findings

Documents submitted	At the time of the inspection, the vehicle registration certificate Part 2 (title) was available, but the vehicle registration certificate Part 1 (document) was not. (Copy)
VIN comparison	The vehicle identification number (VIN) was read from the vehicle and its conformity with the submitted documents was confirmed by the undersigned during the inspection.
Inspection	The inspection conditions were sufficient for the assessment of the vehicle. Lifting equipment and/or a pit were available for examining the vehicle.
Test drive	No test drive/shunting maneuver was carried out during the inspection of the vehicle.
Engine function test	An engine test run was performed.

Value reducing factors

No.	Component group	Description
1	Wheel / tyres	Alloy rim - rear left side - Scratch(es) - Loss in value
2	Wing mirror - left side	Cap - Scratch(es) - Smart repair
3	Sill - right side	Sill - dent(s) - Smooth repair work
4	Wing mirror - left side	Mirror housing - Scratch(es) - Loss in value
5	Mudguard - left side	Mudguard - left side - Scratched - Smart repair
6	Front bumper	Front bumper - Scratched - Paint



Wear and tear

No.	Component group	Description
1	Wheel / tyres	Alloy rim - front left side - Scratch(es) - No deduction
2	Wheel / tyres	Alloy rim - front right side - Scratch(es) - No deduction
3	Wheel / tyres	Alloy rim - rear right side - Scratched - No deduction

The vehicle shows signs of wear and tear commensurate with its age and use.

Order/Scope of Order

An order was placed to prepare a sales report for the described vehicle. This report includes the following:

- Description of key vehicle information
- Documentation of equipment features
(*Delivery by third-party service providers*)
- Documentation of damage, defects, missing parts
- Documentation of prior damage, unrepaired prior damage, repainting
- A brief visual or functional inspection of the equipment details, if possible.
(*Functional testing of driver assistance systems is not included in the scope of services!*)
- a photographic documentation of the vehicle

Basis for the order

This product is based on the guidelines for vehicle returns and valuations published by Alphabet Fleet GmbH. The expert makes the specific findings in each individual case objectively, within the framework of the prescribed standards, based on their own expertise.

The vehicle inspection takes place in a fully assembled, unassembled state.

Damage or defects that can only be detected during disassembly/diagnostic work or through further investigation remain within the realm of prognostic risk. An increased risk exists due to concealed defects caused by fraudulent misrepresentation and which were not identifiable by the expert.

Damage or defects resulting from normal use or wear and tear of the vehicle will be accepted in accordance with the applicable standard.

There was no explicit identification or monetary consideration of the expected features within the product.

Features which, in their nature and extent, slightly exceed normal use but do not constitute unacceptable damage, will be documented and indicated as signs of wear, if applicable.

Damage or defects that, according to the applicable standard, can no longer be attributed to normal use or wear and tear are listed under "Value Reducing Factors" in the product description.

Depending on the product specification, a monetary ID can be provided. If this takes place, the costs can be 100% or pro rata depending on the vehicle's age and mileage.

Previous damages

No apparent prior damage that had been repaired could be found on the vehicle.

Comments

- Der Winterradsatz ist kein Bestandteil der Ausstattungsliste.



Figure 1: Diagonal front (left)



Figure 2: Diagonal front (right)



Figure 3: Diagonal rear (left)



Figure 4: Diagonal rear (right)

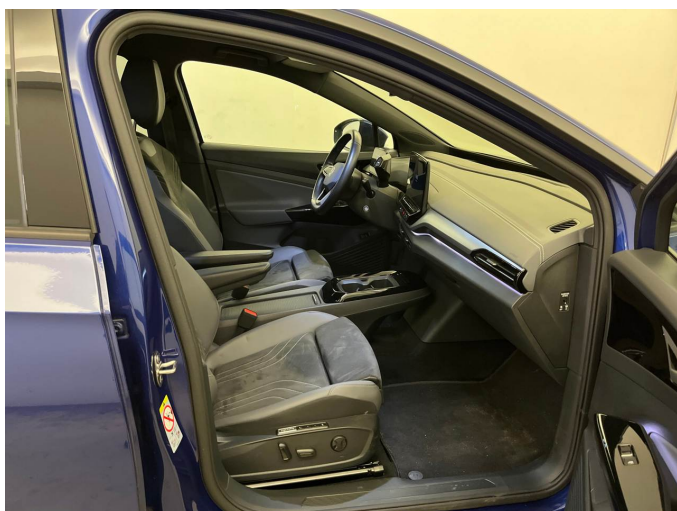


Figure 5: Interior - front



Figure 6: Interior - rear



Figure 7: Instrument cluster



Figure 8: Instrument panel



Figure 9: Interior 360° view



Figure 10: Cargo area



Figure 11: VIN



Figure 12: Mounted tyres



Figure 13: Documents



Figure 14: Additional tyres



Figure 15: Additional tyres

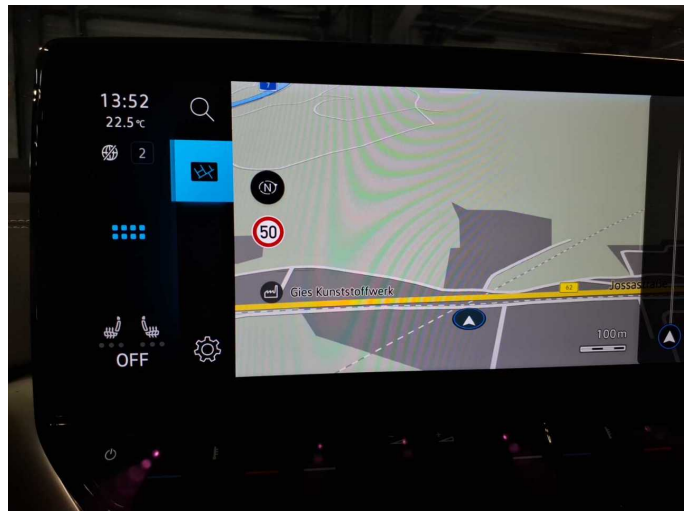


Figure 16: Navigation

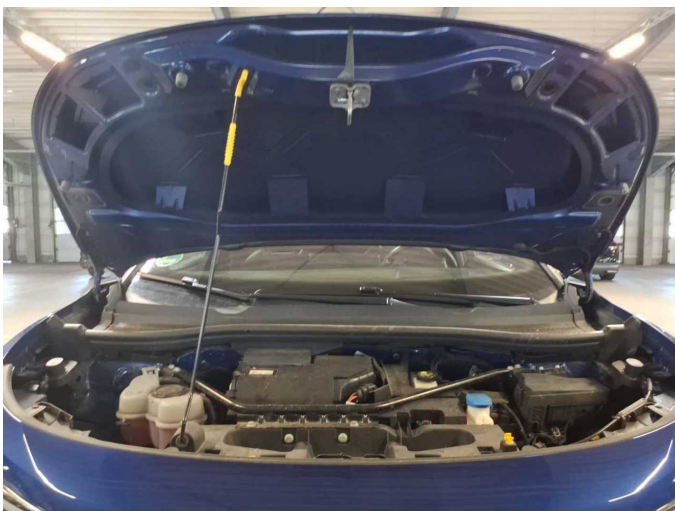


Figure 17: Misc.



Figure 18: Misc.



Figure 19: Misc.



Figure 20: Misc.

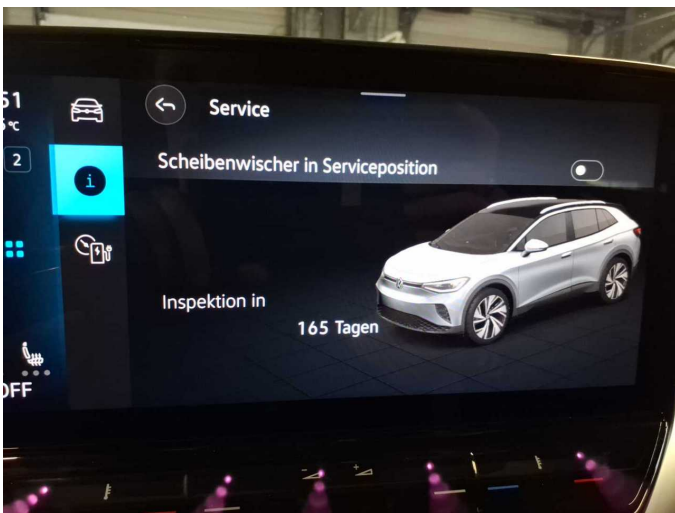


Figure 21: Misc.

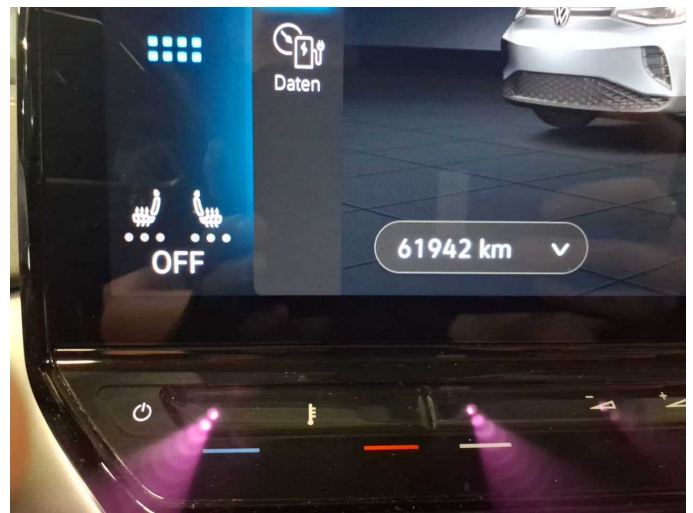


Figure 22: Misc.



Damage 1: Wheel / tyres: Alloy rim - rear left side - Scratch(es) - Loss in value



Damage 1: Wheel / tyres: Alloy rim - rear left side - Scratch(es) - Loss in value



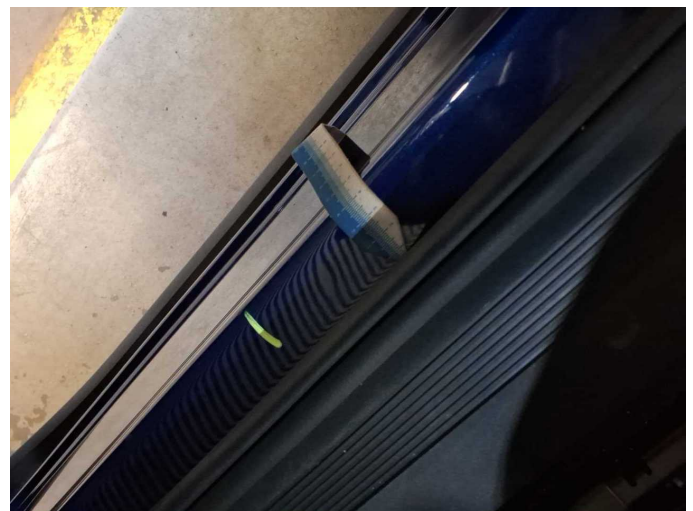
Damage 2: Wing mirror - left side: Cap - Scratch(es) - Smart repair



Damage 2: Wing mirror - left side: Cap - Scratch(es) - Smart repair



Damage 3: Sill - right side: Sill - dent(s) - Smooth repair work



Damage 3: Sill - right side: Sill - dent(s) - Smooth repair work



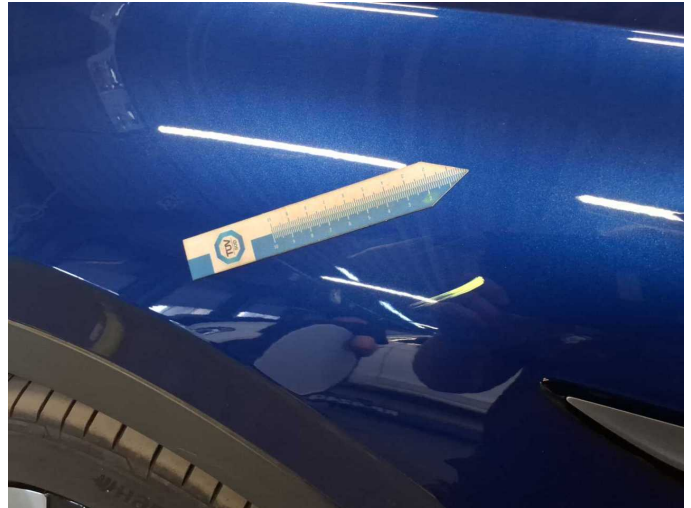
Damage 4: Wing mirror - left side: Mirror housing - Scratch(es) - Loss in value



Damage 4: Wing mirror - left side: Mirror housing - Scratch(es) - Loss in value



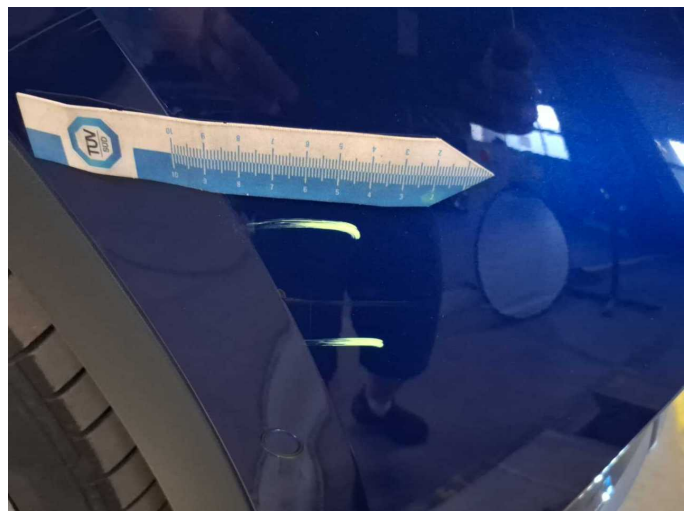
Damage 5: Mudguard - left side: Mudguard - left side - Scratched - Smart repair



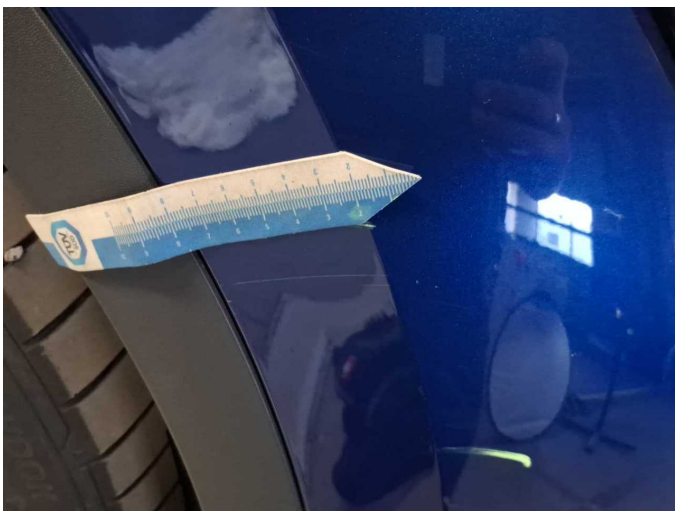
Damage 5: Mudguard - left side: Mudguard - left side - Scratched - Smart repair



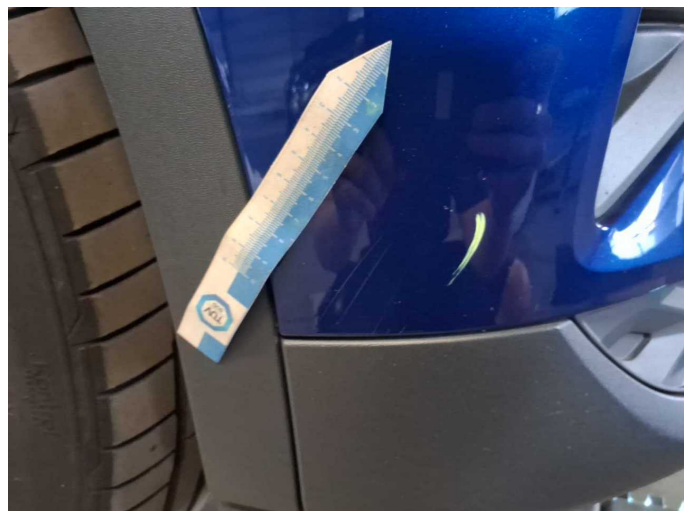
Damage 6: Front bumper: Front bumper - Scratched - Paint



Damage 6: Front bumper: Front bumper - Scratched - Paint



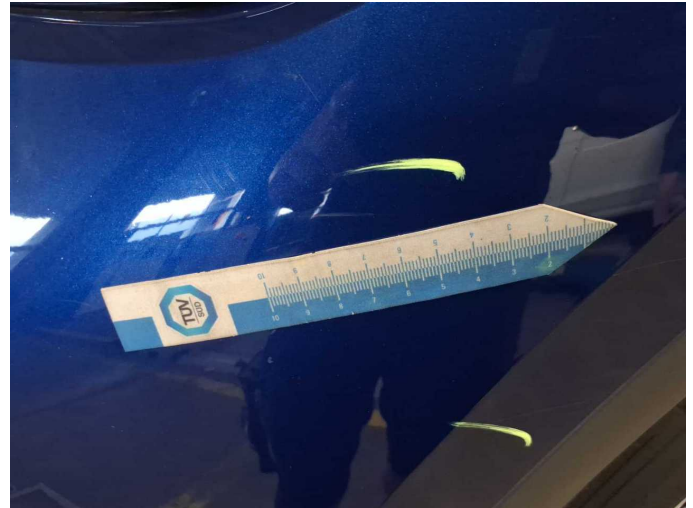
Damage 6: Front bumper: Front bumper - Scratched - Paint



Damage 6: Front bumper: Front bumper - Scratched - Paint



Damage 6: Front bumper: Front bumper - Scratched - Paint



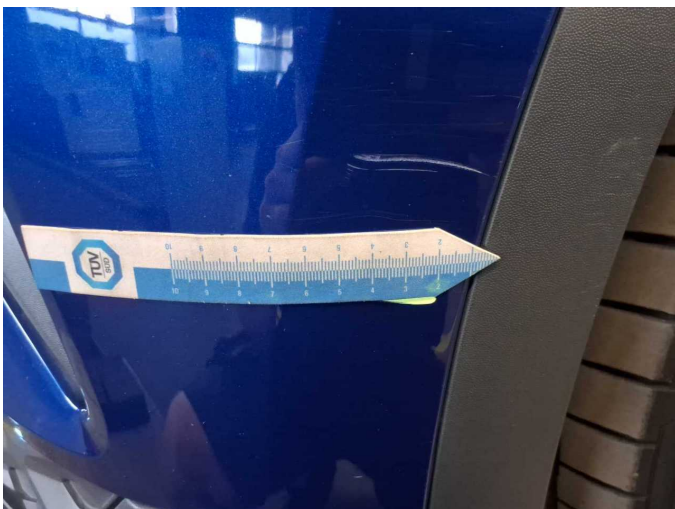
Damage 6: Front bumper: Front bumper - Scratched - Paint



Damage 6: Front bumper: Front bumper - Scratched - Paint



Damage 6: Front bumper: Front bumper - Scratched - Paint



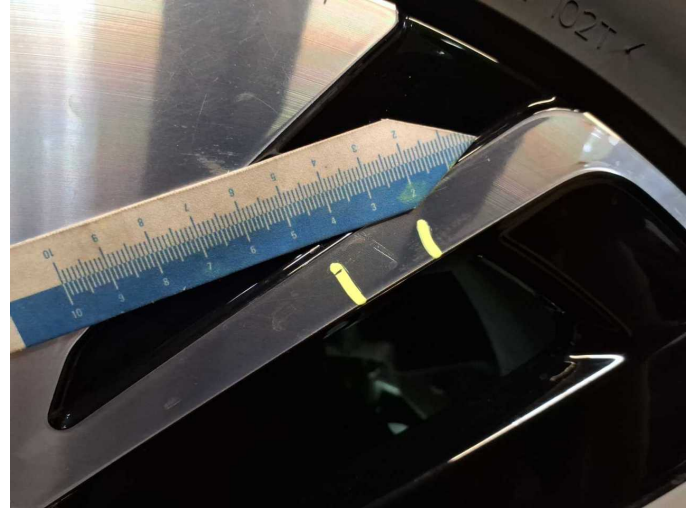
Damage 6: Front bumper: Front bumper - Scratched - Paint



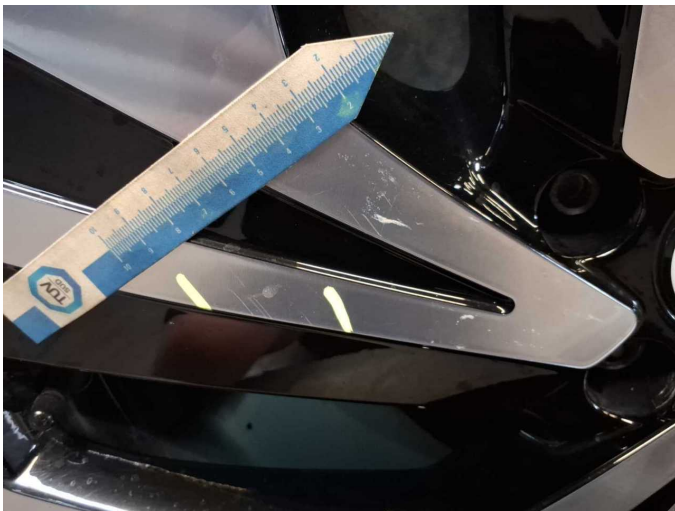
Wear and tear 3: Wheel / tyres: Alloy rim - rear right side - Scratched - No deduction



Wear and tear 3: Wheel / tyres: Alloy rim - rear right side - Scratched - No deduction



Wear and tear 3: Wheel / tyres: Alloy rim - rear right side - Scratched - No deduction



Wear and tear 3: Wheel / tyres: Alloy rim - rear right side - Scratched - No deduction



Wartungshistorie

(gemäß Auftraggeber Informationen)

Fahrgestellnummer: WVGZZZE2ZPE020296

Hersteller / Modell: VOLKSWAGEN VW ID.4 Performance Upgrade Pro

Datum	KM-Stand	Beschreibung
03.02.2025	36.407	Reparatur Sonstiges; Systemtest/Eigendiagnose
13.12.2024	32.381	Bremsflüssigkeit; Bremsflüssigkeit ern; Regelwartungsdienst