

Expertise

Protocol number: 45922389
Order No. / Reference: 26479395
Inspection date: 12 Jun 2026

Manufacturer: Skoda

Model: Octavia Combi 2.0 TDI DSG 4x4 Scout

VIN: TMBLJ8NX5NY021434



Vehicle details

Manufacturer / Type / Model / Equipment

Skoda Octavia Combi 2.0 TDI DSG 4x4 Scout

Vehicle Identification number	TMBLJ8NX5NY021434
Mileage (Read)	114,404 km
First registration	21 Sept 2021
Number of holders	1
Next periodical technical inspection (Report on hand)	09/2026

Power / Engine displacement	110 kw / 1,968 ccm
------------------------------------	--------------------

Fuel type / Cylinder	Diesel / 4
-----------------------------	------------

Gearbox / Number of gears	Automatic / 7
----------------------------------	---------------

Type of drive	All-wheel drive
----------------------	-----------------

Type of vehicle	Station wagon
------------------------	---------------

Colour / colour code	Moon-Weiß Perleffekt
-----------------------------	----------------------

Doors / Seats	5 / 5
----------------------	-------

Upholstery type	Cloth
------------------------	-------

Colour of upholstery	Black-Brown
-----------------------------	-------------



Vehicle details			
Maintenance booklet / proof	digital proof / complete	Next maintenance in	5,300 km
Last service on / at	07/2025 at 96,297 km		
Key is / should be	2 / 2	FZG documents	ZB#2 (B) was available (copy), ZB#1 (S) was not available.
		Letter No.	GD073955
Previous damage / Accident	None detectable	Repainting	None detectable
Inspection conditions	sufficient	Lifting equipment / pit	yes
Test drive	Not performed	Engine function test	Performed
Manufacturer key number/ type code number	8004 / AXF 00021		
Emission standard	EURO6;WLTP;AP;PI/CI; M, N1 I	fine dust sticker	
Permitted total weight	2,197 kg	Empty weight	

Tyres

Mounted tyres				
#	Tyre size	Type of tyre	Manufacturer	Tread depth
1)	205/55 R17 91H	Winter tyres on Light alloy	Continental	3mm / 3mm
2)	205/55 R17 95V	Winter tyres on Light alloy	Dunlop	5mm / 5mm
Additional tyres				
#	Tyre size	Type of tyre	Manufacturer	Tread depth
1)	225/45 R18 91Y	Summer tyres on Light alloy	Bridgestone	5mm / 5mm
2)	225/45 R18 91Y	Summer tyres on Light alloy	Bridgestone	5mm / 5mm
Replacement				
Typ	Tyre size	Type of tyre	Manufacturer	Tread depth
	Tirefit	Expiration date 01/2029		

Legend: Tread depth information for the left tire is listed first, for the right tire it is listed second on the axle in the direction of travel.



Equipment

Standard equipment

- Storage compartment in the luggage compartment with cargo element
- Airbag, driver's knee airbag
- Airbag, front side airbags
- All-wheel drive 4x4
- Anti-lock braking system (ABS)
- Center section of the dashboard with fabric covering
- Electrically adjustable and heated exterior mirrors
- Heated windshield washer nozzles including 5l washer fluid reservoir
- Glasses compartment in the headliner
- Roof rails, anodized
- Diesel particulate filter
- Tachometer
- Electronic parking brake
- Electronic Stability Control (ESC)
- Driving profile selection
- Electric windows front and rear, including anti-pinch protection and child safety lock
- Cruise control system
- Tinted windows
- Heated rear window
- Rear window wiper including windshield washer system
- ISOFIX preparations on the front passenger seat and the outer rear seats including top tether anchorage
- Removable boot cover
- LED fog lights
- LED license plate lights
- LED matrix headlights and dynamic high beam assist (AFS)
- Steering wheel: Heated steering wheel including heated front seats
- Rear center armrest with pass-through option
- Front center armrest, including storage compartment
- Front and rear parking sensors
- Upholstery: Cloth
- Radio accessories: 2 USB-C ports on the front
- Radio accessories: 8 speakers
- Radio accessories: Digital radio reception DAB+
- Radio accessories: Voice control
- Tire pressure monitoring
- Wheels: 18" Braga alloy wheels
- Seat belts
- Seats: Height-adjustable driver and passenger seats
- SKODA Care Connect
- Lane keeping assistant (Lane Assist)
- Telephone: Phonebox with inductive charging function (connection via external antenna)
- Front door sill trims
- Immobiliser
- Storage compartments
- Airbag, driver and passenger
- Airbag, head airbags
- Airbag: Center airbag front
- Ambient lighting
- Traction control (ASR)
- Automatically dimming exterior mirror (driver's side)
- Electrically folding exterior mirrors
- Hill start assist including auto-hold function
- Hydraulic brake assist (HBA)
- Grey headliner
- Decorative strip in ash brown
- Digital instrument cluster (Virtual Cockpit) 10.2"
- Third brake light
- Electronic transverse differential lock (XDS+)
- Driving light assistant
- Suspension: Suspension lift
- Front radar assistant including city emergency braking function and pedestrian and cyclist detection
- Transmission: 7-speed dual-clutch transmission (DSG)
- Green tec: Start/stop system including brake energy recuperation
- Interior mirror automatically dimming
- Kessy, keyless entry and start-stop system
- Climatronic air conditioning (2-zone)
- Headrests (5) front and rear height adjustable
- LED taillights in crystal glass look and animated turn signals
- LED headlights with LED daytime running lights
- Remote release of the rear seat backrests in the trunk
- Steering wheel: height and reach adjustable
- Steering wheel: Leather steering wheel with multifunction buttons and paddle shifters.
- Engine drag torque control (MSR)
- Pedals in stainless steel look
- Radio: Bolero music system with capacitive 10" color display
- Radio accessories: Bluetooth hands-free system
- Radio accessories: SmartLink
- Rain sensor
- Tire mobility kit
- Electromechanical power steering
- Safety lights in the front side doors
- Seats: Rear seat backrest split 60:40, foldable
- Speed limiter
- 12V socket in the trunk
- Phone: Wireless SmartLink for Apple CarPlay
- Textile floor mats
- Lashing eyes in the trunk
- Central locking including remote control integrated into the key and EASY Start



Extra equipment

- Swiveling trailer hitch including trailer stabilization and adapter
- Auxiliary heater with radio remote control
- Luggage net partition
- Paint finish: Pearl effect
- 230V socket and USB charging port (230V socket and 2 x USB charging ports in the rear as well as USB charging port in the rearview mirror)

Brief expert findings

Documents submitted	At the time of the inspection, the vehicle registration certificate Part 2 (title) was available, but the vehicle registration certificate Part 1 (document) was not. (Copy)
VIN comparison	The vehicle identification number (VIN) was read from the vehicle and its conformity with the submitted documents was confirmed by the undersigned during the inspection.
Inspection	The inspection conditions were sufficient for the assessment of the vehicle. Lifting equipment and/or a pit were available for examining the vehicle.
Test drive	No test drive/shunting maneuver was carried out during the inspection of the vehicle.
Engine function test	An engine test run was performed.

Value reducing factors

No.	Component group	Description
1	Front bumper	Spoiler - Scratch(es) - Smart repair
2	Side panel - rear left side	Sill (Edging) - Soiled - Clean
3	Rear bumper	Rear bumper - Scratch(es) - Smart repair
4	Body	Body - Glued / labelled - De-glue / neutralise

Wear and tear

No.	Component group	Description
1	Wheel / tyres	Tyre - front (3mm) - Does not meet the leasing specifications - No deduction
2	Wheel / tyres	Alloy rim - rear right side - Scratched - No deduction
3	Wheel / tyres	Alloy rim - front right side - Scratched - No deduction

The vehicle shows signs of wear and tear commensurate with its age and use.

Missing parts

Description

Multimedia system - Navigation data storage

Order/Scope of Order

An order was placed to prepare a sales report for the described vehicle. This report includes the following:

- Description of key vehicle information
- Documentation of equipment features
(*Delivery by third-party service providers*)
- Documentation of damage, defects, missing parts
- Documentation of prior damage, unrepaired prior damage, repainting
- A brief visual or functional inspection of the equipment details, if possible.
(*Functional testing of driver assistance systems is not included in the scope of services!*)
- a photographic documentation of the vehicle



Basis for the order

This product is based on the guidelines for vehicle returns and valuations published by Alphabet Fleet GmbH. The expert makes the specific findings in each individual case objectively, within the framework of the prescribed standards, based on their own expertise.

The vehicle inspection takes place in a fully assembled, unassembled state.

Damage or defects that can only be detected during disassembly/diagnostic work or through further investigation remain within the realm of prognostic risk. An increased risk exists due to concealed defects caused by fraudulent misrepresentation and which were not identifiable by the expert.

Damage or defects resulting from normal use or wear and tear of the vehicle will be accepted in accordance with the applicable standard.

There was no explicit identification or monetary consideration of the expected features within the product.

Features which, in their nature and extent, slightly exceed normal use but do not constitute unacceptable damage, will be documented and indicated as signs of wear, if applicable.

Damage or defects that, according to the applicable standard, can no longer be attributed to normal use or wear and tear are listed under "Value Reducing Factors" in the product description.

Depending on the product specification, a monetary ID can be provided. If this takes place, the costs can be 100% d or pro rata depending on the vehicle's age and mileage.

Previous damages

No apparent prior damage that had been repaired could be found on the vehicle.

Comments

Der montierte Radsatz ist nicht Bestandteil der Ausstattung.



Figure 1: Diagonal front (left)



Figure 2: Diagonal front (right)



Figure 3: Diagonal rear (left)



Figure 4: Diagonal rear (right)



Figure 5: Interior - front



Figure 6: Interior - rear



Figure 7: Instrument cluster



Figure 8: Instrument panel



Figure 9: Interior 360° view



Figure 10: Cargo area



Figure 11: VIN



Figure 12: Mounted tyres

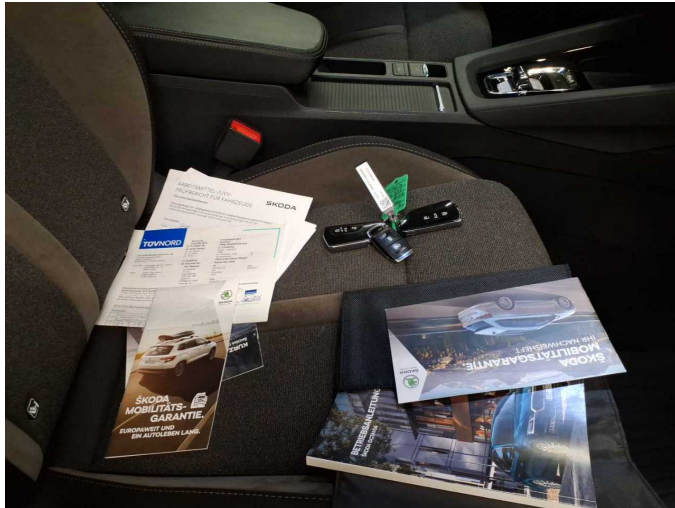


Figure 13: Documents



Figure 14: Documents



Figure 15: Additional tyres

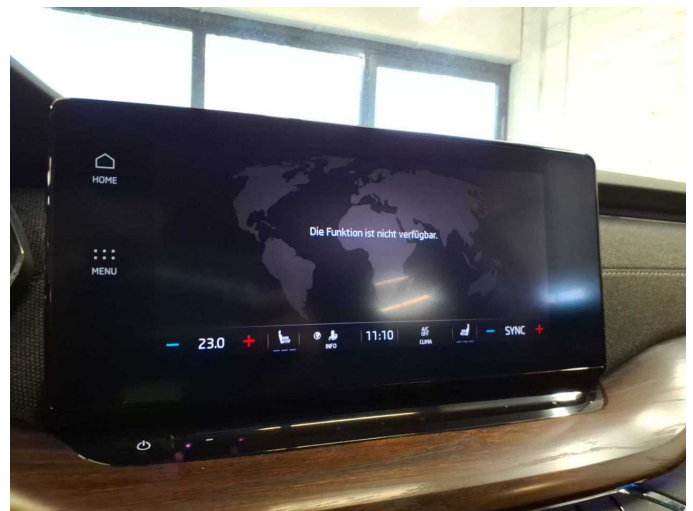


Figure 16: Navigation



Figure 17: Misc.



Figure 18: Misc.



Figure 19: Misc.



Figure 20: Misc.



Figure 21: Misc.



Figure 22: Misc.



Figure 23: Misc.



Figure 24: Misc.



Figure 25: Misc.



Figure 26: Misc.



Figure 27: Misc.



Figure 28: Misc.



Figure 29: Misc.



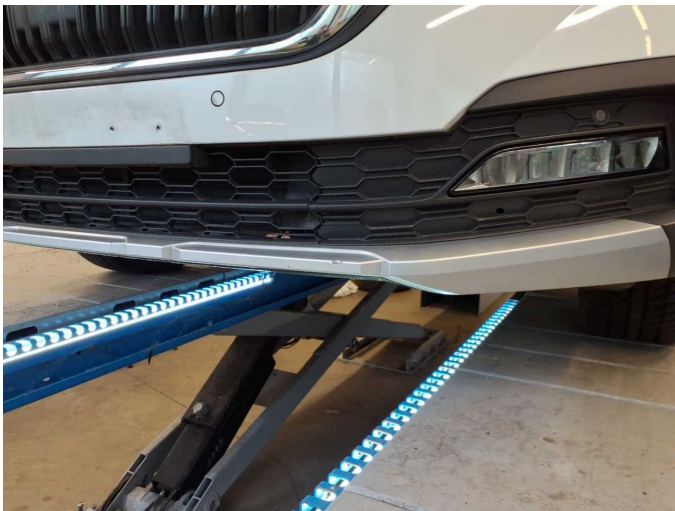
Figure 30: Misc.



Figure 31: Misc.



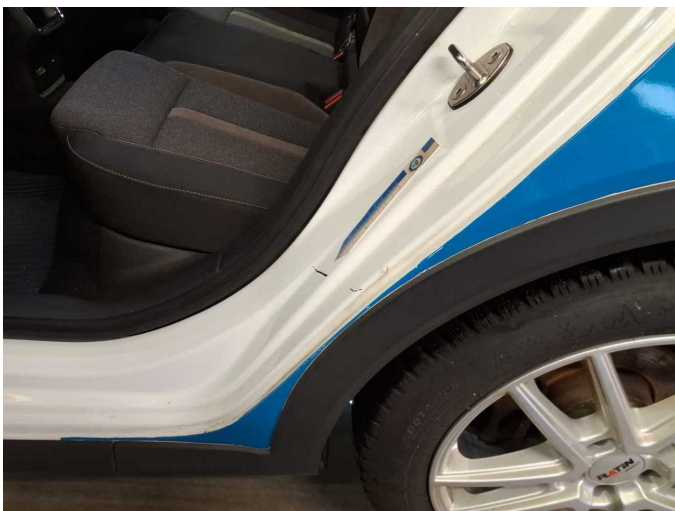
Figure 32: Misc.



Damage 1: Front bumper: Spoiler - Scratch(es) - Smart repair



Damage 1: Front bumper: Spoiler - Scratch(es) - Smart repair



Damage 2: Side panel - rear left side: Sill (Eding) - Soiled - Clean



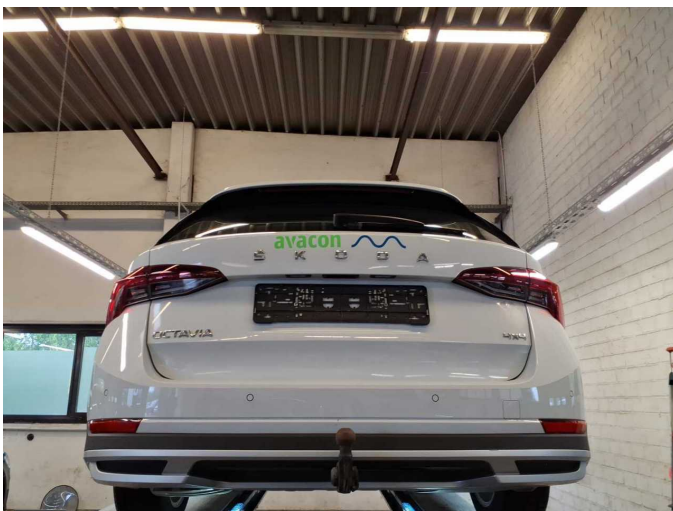
Damage 2: Side panel - rear left side: Sill (Eding) - Soiled - Clean



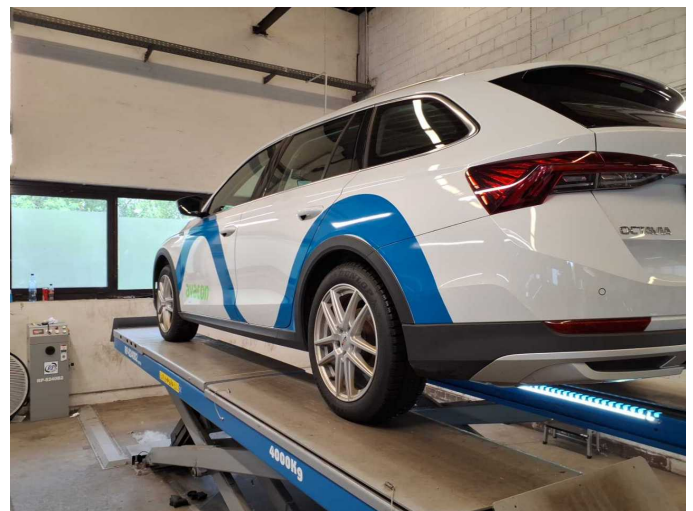
Damage 3: Rear bumper: Rear bumper - Scratch(es) - Smart repair



Damage 3: Rear bumper: Rear bumper - Scratch(es) - Smart repair



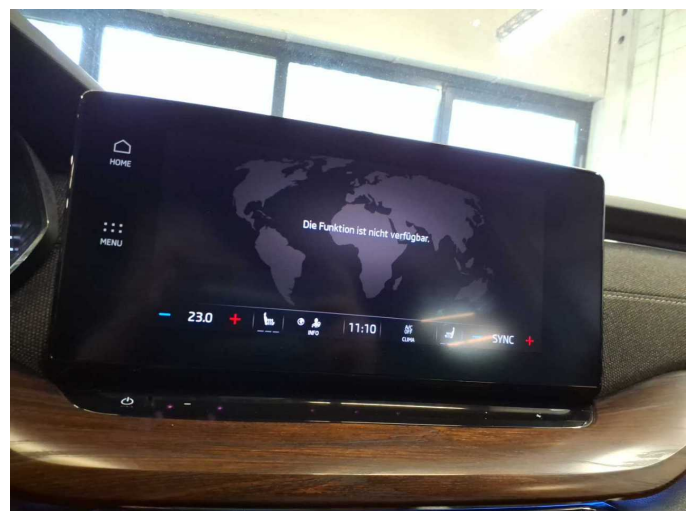
Damage 4: Body: Body - Glued / labelled - De-glug / neutralise



Damage 4: Body: Body - Glued / labelled - De-glug / neutralise



Damage 4: Body: Body - Glued / labelled - De-glug / neutralise



Missing part 1: Multimedia system: Navigation data storage - Missing - Replace



Wartungshistorie

(gemäß Auftraggeber Informationen)

Fahrgestellnummer: TMBLJ8NX5NY021434

Hersteller / Modell: SKODA SKODA Octavia Combi 2.0 TDI DSG 4x4 Scout

Datum	KM-Stand	Beschreibung
24.02.2026	112.484	Reparatur Sonstiges; Systemtest/Eigendiagnose; Wartung Sonstiges
17.07.2025	97.588	Systemtest/Eigendiagnose
14.07.2025	96.297	Kraftstofffilter ern; Luftfiltereinsatz ern; Motoröl b. Wartung; Ölfilter ern; Ölwechsel; Wartung Sonstiges
25.10.2024	75.089	Systemtest/Eigendiagnose; Wartung Sonstiges
24.09.2024	75.089	AU; Bremse Sonstiges; Bremsklötze hinten; Bremsklötze vorne; Bremsscheiben hinten; Bremsscheiben vorne; Motoröl b. Wartung; Ölfilter ern; Regelwartungsdienst; Wartung Sonstiges
07.06.2024	65.891	Systemtest/Eigendiagnose
02.11.2023	49.684	Bremsflüssigkeit; Bremsflüssigkeit ern; Getriebeöl ern/prüfen; Motoröl b. Wartung; Ölfilter ern; Ölwechsel - Hinterachse; Regelwartungsdienst; Reparatur Sonstiges; Wartung Sonstiges
11.11.2022	25.947	Motoröl b. Wartung; Ölfilter ern; Regelwartungsdienst; Wartung Sonstiges