

Expertise

Protocol number: 45925257
Order No. / Reference: 26479130
Inspection date: 12 Jun 2026

Manufacturer: Volkswagen

Model: Passat Variant 2.0 TDI SCR DSG Business

VIN: WVVZZZ3CZPE030951



Vehicle details

Manufacturer / Type / Model / Equipment

Volkswagen Passat Variant 2.0 TDI SCR DSG Business

Vehicle Identification number WVVZZZ3CZPE030951

Mileage (Read) 145,567 km

First registration 20 Feb 2023

Number of holders 1

Power / Engine displacement 110 kw / 1,968 ccm

Fuel type / Cylinder Diesel / 4

Gearbox / Number of gears Automatic / 7

Type of drive Front drive

Type of vehicle Station wagon

Colour / colour code pyrit silber metallic (B7S)

Doors / Seats 5 / 5

Upholstery type Cloth

Colour of upholstery Anthracite-Grey



| Vehicle details | | | |
|--|------------------------------|--------------------------------|--|
| Maintenance booklet / proof | digital proof / complete | Next maintenance in | 23,700 km |
| Last service on / at | 04/2026 at 145,235 km | | |
| Key is / should be | 2 / 2 | FZG documents | ZB#2 (B) was available (copy), ZB#1 (S) was not available. |
| | | Letter No. | GP907890 |
| Previous damage / Accident | None detectable | Repainting | None detectable |
| Inspection conditions | sufficient | Lifting equipment / pit | No |
| Test drive | Not performed | Engine function test | Performed |
| Manufacturer key number/ type code number | 0603 / BQS 04327 | | |
| Emission standard | EURO6;WLTP;AP;PI/CI; M, N1 I | fine dust sticker | |
| Permitted total weight | 2,200 kg | Empty weight | |

Tyres

| Mounted tyres | | | | |
|------------------|----------------|--|--------------|-------------|
| # | Tyre size | Type of tyre | Manufacturer | Tread depth |
| 1) | 215/60 R16 99V | Summer tyres on Light alloy | Pirelli | 6mm / 6mm |
| 2) | 215/60 R16 99V | Summer tyres on Light alloy | Continental | 6mm / 6mm |
| Additional tyres | | | | |
| # | Tyre size | Type of tyre | Manufacturer | Tread depth |
| 1) | 215/60 R16 99H | Winter tyres on Steel rim with wheel cover | Continental | 6mm / 6mm |
| 2) | 215/60 R16 99H | Winter tyres on Steel rim with wheel cover | Continental | 6mm / 6mm |
| Replacement | | | | |
| Typ | Tyre size | Type of tyre | Manufacturer | Tread depth |
| | Tirefit | Expiration date 11/2026 | | |

Legend: Tread depth information for the left tire is listed first, for the right tire it is listed second on the axle in the direction of travel.

TÜV SÜD Auto Partner GmbH
Wiesenring 2
04159 Leipzig

Inspection location
Hartmann Fleet Professionals GmbH
Leerenstraße 25
29683 Bad Fallingbommel



Equipment



Standard equipment

- Airbag for driver and front passenger (airbag deactivation switch on the passenger side)
- Anti-lock braking system (ABS)
- Adaptive Cruise Control (ACC) "stop & go", including speed limiter
- Electrically adjustable and heated exterior mirrors, ambient lighting (automatically dimming on the driver's side)
- Chrome trim on the side windows
- Diesel particulate filter
- Parking aid - warning signals for obstacles in the front and rear area
- Electronic stability program and electromechanical brake booster
- Remote release for luggage compartment lid
- Windscreen made of laminated safety glass, heat and sound insulating
- Transmission: 7-speed DSG (7-speed dual-clutch transmission DSG)
- Interior lights with delayed shut-off and dimming function (2 LED reading lights each at the front and rear)
- Rear headrests (3)
- LED fog lights and cornering lights
- LED taillights
- Steering wheel: Multifunction steering wheel in leather, with paddle shifters
- Multifunction display "Premium" with multi-color display (showing, among other things: - Outside temperature - Average consumption - Average speed - Trip distance - Trip time - Gear recommendation - Speed warning - Comfort - Current consumption - Range - Service - Time with extended display options, e.g.: - Digital speedometer - Digital oil temperature display - Lights & visibility - Language - Auxiliary heater - Winter tires)
- Emergency call service (no registration required, service is activated upon delivery)
- Upholstery: Fabric "Business" (seat center panels of the front seats and the outer rear seats in fabric "Weave")
- Radio "Composition" (touchscreen with 16.5 cm screen diagonal - 8 speakers - output power 4 x 20 watts - diversity antenna for FM reception - dual tuner - RDS - MP3 playback - USB-C interface - 3-way tone control)
- Radio accessories: Digital radio reception DAB+ (reception of digitally broadcast radio stations and traffic information in addition to the analog station offering - reception depends on the local availability of digital networks - expanded range of radio programs - improved reception performance)
- Wheels: Tire Mobility Set (12-volt compressor and tire sealant)
- Gearshift knob in leather
- Keyless start system without safe locking
- Seat belts: Three-point automatic seat belt (seat belt for middle rear seat - seat belts for outer rear seats - front seat belts with height adjustment and belt tensioner)
- Seats: Front seats height-adjustable (ergoComfort seat on the driver's side - with electric backrest adjustment)
- Start-stop system (with brake energy recuperation)
- Airbag, head airbag system for front and rear passengers (including front side airbags)
- App-Connect (Volkswagen offers three interfaces for connecting smartphones with numerous possibilities: - Apple CarPlay - Android Auto from Google - MirrorLink)
- Cup holders (2) front
- Hill start assist
- third brake light
- Headliner in Mistral Grey
- Tachometer
- Entry/warning lights in LED technology in the front doors
- Electronic parking brake including auto-hold function
- Automatic headlight control (with daytime running lights, "Leaving home" function and manual "Coming home" function)
- Pedestrian detection
- Adjustable luggage compartment floor
- Rear window heated
- rear window wiper
- ISOFIX mounting points (for attaching 2 child seats to the rear seats, also for i-Size child seats)
- Front headrests (safety-optimized, longitudinally and height-adjustable)
- LED headlights with daytime running lights
- Headlight range control
- Front center armrest, height and length adjustable, with storage box (2 rear air vents with chrome slats)
- Fatigue detection (detects signs of possible driver fatigue based on characteristic steering behavior, time of day and driving duration and issues a visual and audible warning)
- Mesh partition
- Non-smoking version (storage compartment and 12V socket at the front)
- Emergency braking assistant "Front Assist" (for automatic distance control ACC up to 210 km/h)
- Package: Light and Sight Package "Plus" (LED lights in the front footwell - Electrically adjustable and heated exterior mirrors, automatically dimming on the driver's side - Entry/warning lights in the front doors, in LED technology - Automatic headlight control, with daytime running lights, "Leaving Home" function and manual "Coming Home" function - Interior light with delayed shut-off and dimming function, 2 LED reading lights each in the front and rear - Automatically dimming interior mirror - Illuminated vanity mirrors - Extendable sun visors - Rain sensor)
- Tire pressure monitoring system (passive)
- Wheels: 4 light alloy wheels "Sepang" 6.5 J x 16 (tires 215/60 R 16, optimized for rolling resistance)
- Rear bench seat undivided, backrest asymmetrically split and foldable, with center armrest (and pass-through option)
- Power steering (electromechanical, speed-dependent)
- Seats: Comfort seats in the front



- Telephone interface
- Textile floor mats (front and rear)
- Warning tone and light for unfastened seat belts front and rear

Extra equipment

- Airbag: Driver's side knee airbag, rear side airbags and seatbelt pretensioners (airbag for driver and front passenger, with front passenger airbag deactivation, including driver's side knee airbag - three-point automatic seatbelts with pretensioners for the outer rear seats - side airbags for the outer rear seats, including front side airbags and head airbag system)
- Chassis: Rear suspension with fully automatic level control
- Navigation system "Discover Pro" incl. "Streaming & Internet" (4x20 Watt App-Con. Wireless Digital Cockpit. Operation with proximity sensor. Dual tuner with phase differentiation. DAB. Vehicle menu. Speed. Volume adjustment. Gestures. 32 GB SSD hard drive. Map 2D display. Tone control. 3-way TFT display with touchscreen. MP3. Navigation for Europe. Voice control. Telephone contact. Address. Telephone interface. "Comfort" with inductive charging. 2 USB iPod/iPhone. Traffic sign recognition. "We Connect Plus" incl. "We Connect". Dynamic route guidance. RDS. TMC tuner. Mobile key pre-activation, vehicle via smartphone.)
- Package: Ambient lighting (ambient lighting, 1-color - entry/warning lights in LED technology in all doors)
- Removable luggage compartment protective mat (back of the rear seat backrest with black rubber coating)
- Seats: Front passenger seat backrest folds down completely
- Surround view "Area View" incl. reversing camera "Rear View" with Business Premium (displays the vehicle's surroundings in real time on the radio/navigation system display - assists when exiting blind driveways or side streets, when parking in and out of parking spaces, when maneuvering with a trailer or when driving off-road)
- Voice control

- Seats: Lumbar support in the front (driver's side electrically adjustable)
- Lane Assist (warns with a corrective steering intervention if the vehicle unintentionally leaves the lane)
- 12V power outlet on the rear center console (and in the luggage compartment)
- First aid kit, warning triangle and high-visibility vest
- Electronic immobilizer
- Central locking with remote control

- Auxiliary heating and ventilation (with radio remote control and timer)
- Decorative inlays in brushed aluminum (for instrument panel, door panels)
- Exterior mirrors with ambient lighting and passenger-side mirror lowering function (foldable and heated - dimming on the driver's side)
- High beam control "Light Assist" (automatically switches on the high beam in darkness from 65 km/h - detects vehicles ahead and oncoming vehicles and automatically dims the headlights before they are blinded)
- Package: "Business Premium" package incl. navigation (from Business trim level) (2 USB-C ports in the front, USB-C charging socket in the rear, 230V socket, App-Connect incl. wireless, Apple CarPlay, Android Auto, "Travel Assist" driver assistance system and "Lane Assist" lane keeping assist system, Air Care Climatronic with 3-zone temperature control, active combination filter and rear controls, lumbar support in the front, electric on the driver's side, massage function on the driver's side, "Rear View" reversing camera, heated windshield washer nozzles, Comfort telephone interface, inductive charging function, heated front seats)
- Paint finish: Metallic
- Proactive occupant protection system and lane change assistant "Side Assist" (Proactive occupant protection system in conjunction with "Front Assist" and "Side Assist" - lane change assistant "Side Assist" and parking assistant)
- Rear side windows and rear window tinted
- Roof headliner in titanium black
- Roof rails, silver anodized
- Towbar, foldable (with electric release)

Brief expert findings

| | |
|----------------------|---|
| Documents submitted | At the time of the inspection, the vehicle registration certificate Part 2 (title) was available, but the vehicle registration certificate Part 1 (document) was not. (Copy) |
| VIN comparison | The vehicle identification number (VIN) was read from the vehicle and its conformity with the submitted documents was confirmed by the undersigned during the inspection. |
| Inspection | The inspection conditions were sufficient for the assessment of the vehicle. No lifting equipment or pit was available for inspecting the vehicle. Therefore, inspection of the vehicle's underside was only possible to a limited extent. |
| Test drive | No test drive/shunting maneuver was carried out during the inspection of the vehicle. |
| Engine function test | An engine test run was performed. |



Value reducing factors

| No. | Component group | Description |
|-----|-----------------------|---|
| 1 | Door - rear left side | Door handle - outside - Scratch(es) - Smart repair |
| 2 | Rear bumper | Rear bumper - Scratch(es) - Paint |
| 3 | Bonnet | Bonnet - Stone chips - Paint |
| 4 | Boot lid / rear door | Boot lid - Dent / paintcoat damage - Repair and paint |

Wear and tear

| No. | Component group | Description |
|-----|------------------------------|---|
| 1 | Vehicle glazing | Windscreen - Stone chips - No deduction |
| 2 | Front bumper | Front bumper - Stone chips - No deduction |
| 3 | Side panel - rear right side | Side panel - dent(s) - No deduction |

The vehicle shows signs of wear and tear commensurate with its age and use.

Order/Scope of Order

An order was placed to prepare a sales report for the described vehicle. This report includes the following:

- Description of key vehicle information
- Documentation of equipment features
(*Delivery by third-party service providers*)
- Documentation of damage, defects, missing parts
- Documentation of prior damage, unrepaired prior damage, repainting
- A brief visual or functional inspection of the equipment details, if possible.
(*Functional testing of driver assistance systems is not included in the scope of services!*)
- a photographic documentation of the vehicle

Basis for the order

This product is based on the guidelines for vehicle returns and valuations published by Alphabet Fleet GmbH. The expert makes the specific findings in each individual case objectively, within the framework of the prescribed standards, based on their own expertise.

The vehicle inspection takes place in a fully assembled, unassembled state.

Damage or defects that can only be detected during disassembly/diagnostic work or through further investigation remain within the realm of prognostic risk. An increased risk exists due to concealed defects caused by fraudulent misrepresentation and which were not identifiable by the expert.

Damage or defects resulting from normal use or wear and tear of the vehicle will be accepted in accordance with the applicable standard.

There was no explicit identification or monetary consideration of the expected features within the product.

Features which, in their nature and extent, slightly exceed normal use but do not constitute unacceptable damage, will be documented and indicated as signs of wear, if applicable.

Damage or defects that, according to the applicable standard, can no longer be attributed to normal use or wear and tear are listed under "Value Reducing Factors" in the product description.

Depending on the product specification, a monetary ID can be provided. If this takes place, the costs can be 100% d or pro rata depending on the vehicle's age and mileage.

Previous damages

No apparent prior damage that had been repaired could be found on the vehicle.

Comments

- Winterradsatz ist kein Bestandteil des Auslieferungsumfangs.



Figure 1: Diagonal front (left)



Figure 2: Diagonal front (right)



Figure 3: Diagonal rear (left)



Figure 4: Diagonal rear (right)



Figure 5: Interior - front



Figure 6: Interior - rear



Figure 7: Instrument cluster



Figure 8: Instrument panel



Figure 9: Interior 360° view



Figure 10: Cargo area



Figure 11: VIN



Figure 12: Mounted tyres



Figure 13: Documents



Figure 14: Additional tyres



Figure 15: Additional tyres



Figure 16: Navigation

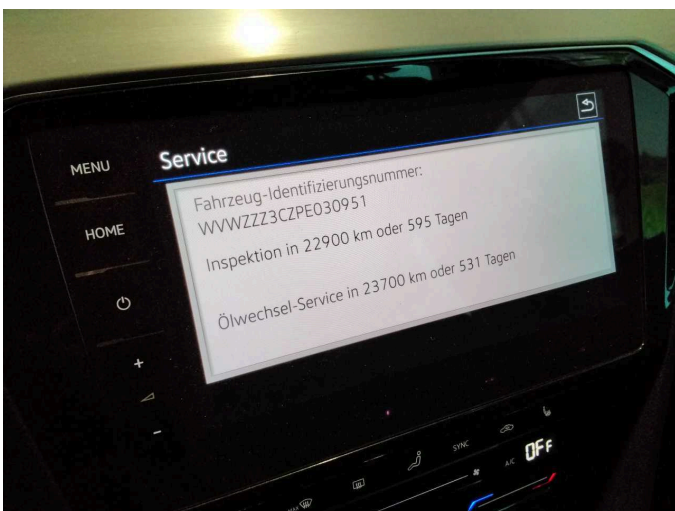


Figure 17: Misc.



Figure 18: Misc.



Figure 19: Misc.



Figure 20: Misc.



Figure 21: Misc.

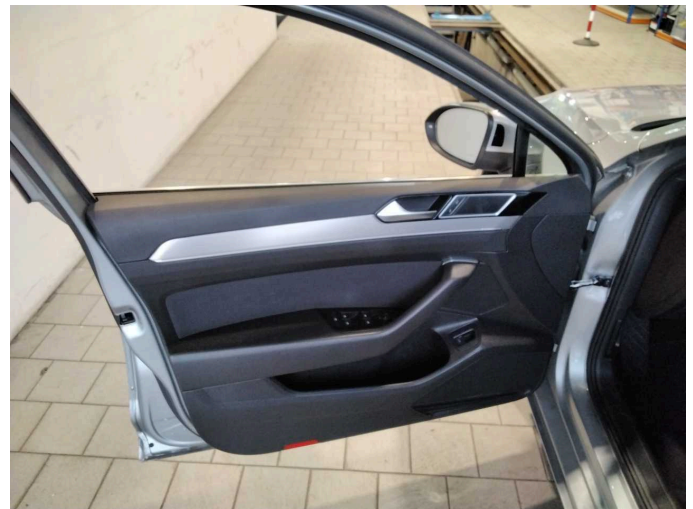


Figure 22: Misc.



Figure 23: Misc.

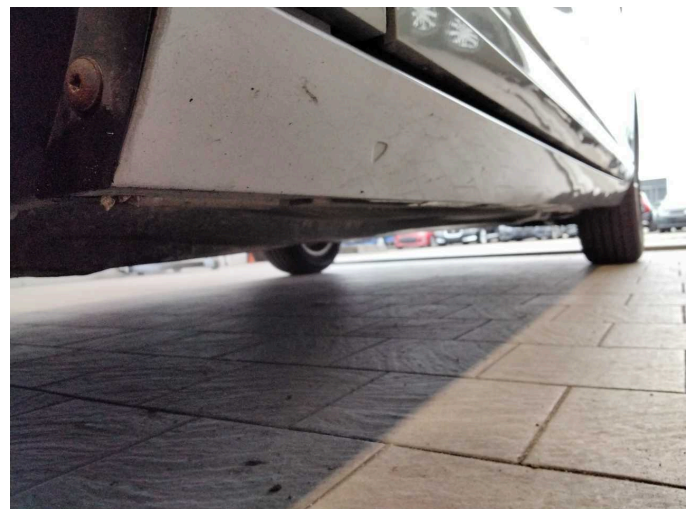


Figure 24: Misc.



Figure 25: Misc.



Figure 26: Misc.



Figure 27: Misc.

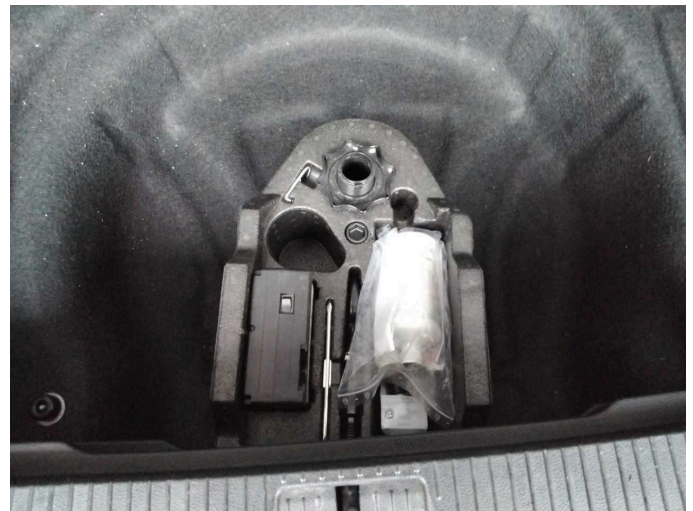


Figure 28: Misc.



Damage 1: Door - rear left side: Door handle - outside - Scratch(es) - Smart repair



Damage 1: Door - rear left side: Door handle - outside - Scratch(es) - Smart repair



Damage 2: Rear bumper: Rear bumper - Scratch(es) - Paint



Damage 2: Rear bumper: Rear bumper - Scratch(es) - Paint



Damage 2: Rear bumper: Rear bumper - Scratch(es) - Paint



Damage 2: Rear bumper: Rear bumper - Scratch(es) - Paint



Damage 3: Bonnet: Bonnet - Stone chips - Paint



Damage 3: Bonnet: Bonnet - Stone chips - Paint



Damage 3: Bonnet: Bonnet - Stone chips - Paint



Damage 3: Bonnet: Bonnet - Stone chips - Paint



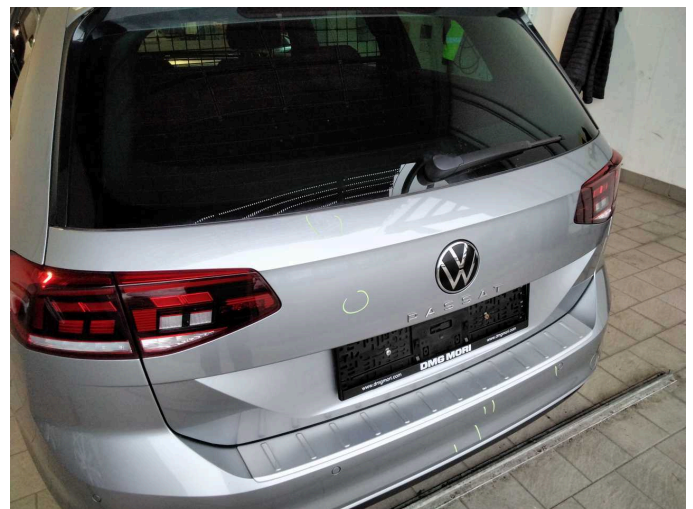
Damage 3: Bonnet: Bonnet - Stone chips - Paint



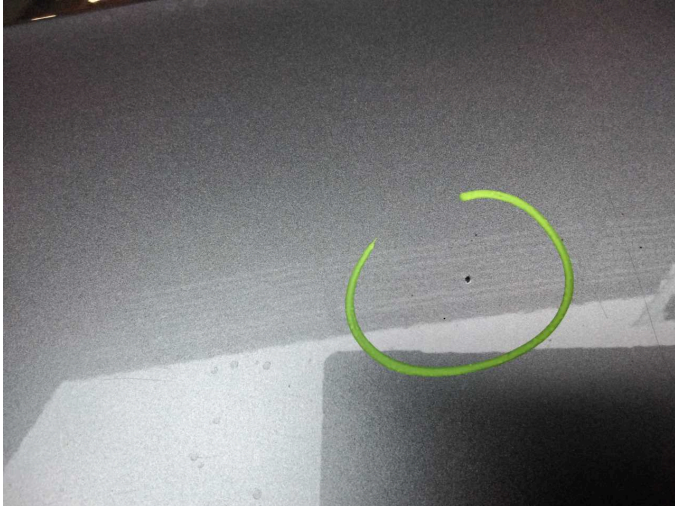
Damage 3: Bonnet: Bonnet - Stone chips - Paint



Damage 3: Bonnet: Bonnet - Stone chips - Paint



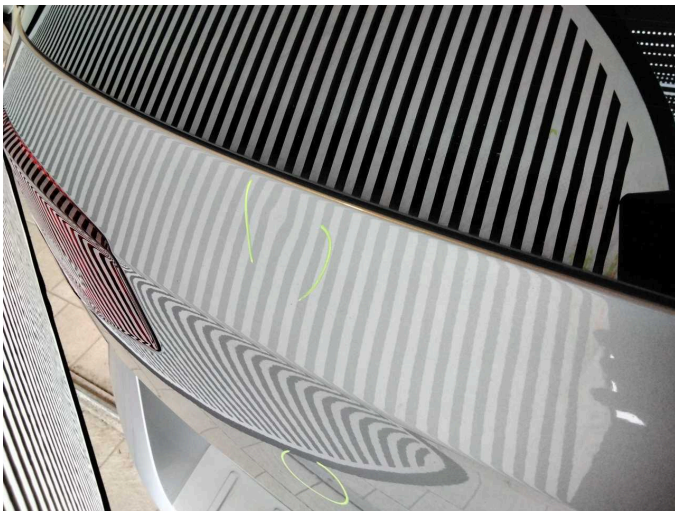
Damage 4: Boot lid / rear door: Boot lid - Dent / paintcoat damage - Repair and paint



Damage 4: Boot lid / rear door: Boot lid - Dent / paintcoat damage - Repair and paint



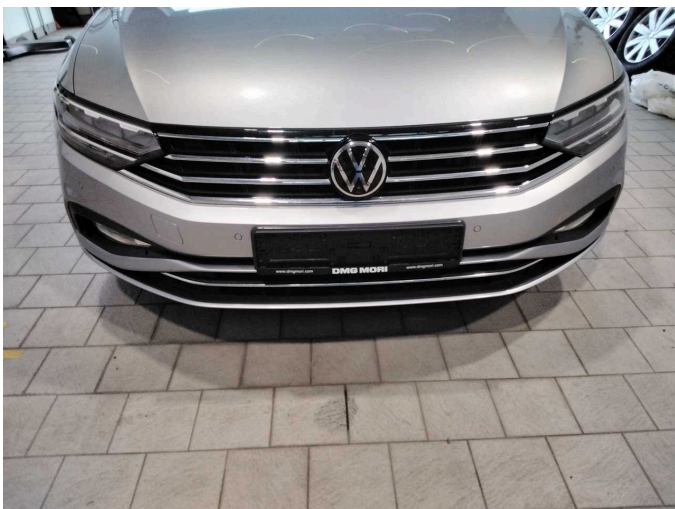
Damage 4: Boot lid / rear door: Boot lid - Dent / paintcoat damage - Repair and paint



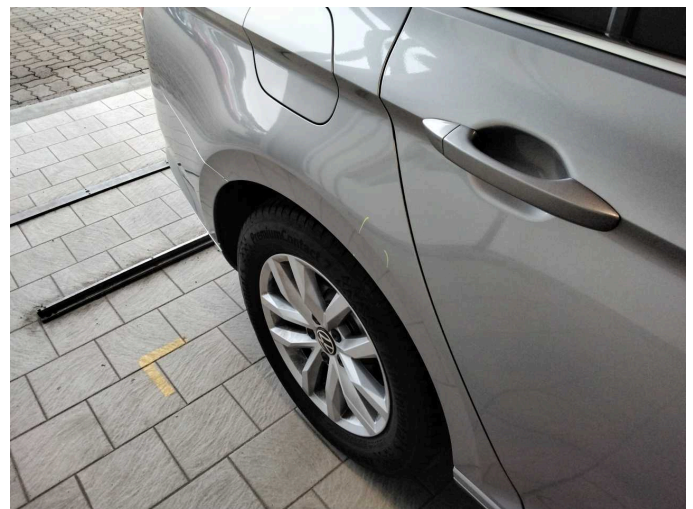
Damage 4: Boot lid / rear door: Boot lid - Dent / paintcoat damage - Repair and paint



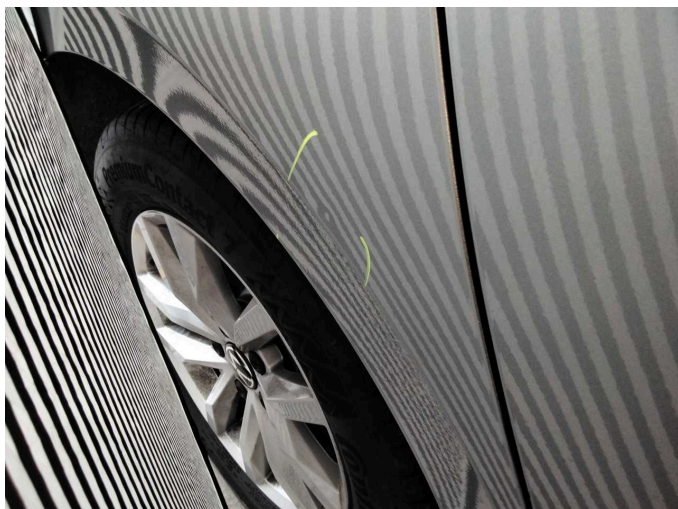
Wear and tear 1: Vehicle glazing: Windscreen - Stone chips - No deduction



Wear and tear 2: Front bumper: Front bumper - Stone chips - No deduction



Wear and tear 3: Side panel - rear right side: Side panel - dent(s) - No deduction



Wear and tear 3: Side panel - rear right side: Side panel - dent(s) - No deduction



Wartungshistorie

(gemäß Auftraggeber Informationen)

Fahrgestellnummer: WVWZZZ3CZPE030951
Hersteller / Modell: VOLKSWAGEN VOLKSWAGEN Passat Variant 2.0 TDI SCR DSG
Business

| Datum | KM-Stand | Beschreibung |
|------------|----------|--|
| 22.04.2026 | 145.235 | AU; Batterie ern; Bremse Sonstiges; Bremsflüssigkeit; Bremsflüssigkeit ern; Bremsklötze hinten; Bremsklötze vorne; Bremsscheiben + Klötze h; Bremsscheiben hinten; Keilrippenriemen; Motoröl b. Wartung; Ölfilter ern; Ölwechsel; Reparatur Sonstiges; Systemtest/Eigendiagnose; Wartung Sonstiges |
| 28.01.2026 | 138.363 | Getriebeöl ern/prüfen; Regelwartungsdienst |
| 22.09.2025 | 123.414 | Motoröl b. Wartung; Regelwartungsdienst; Systemtest/Eigendiagnose |
| 14.07.2025 | 110.324 | Bremsscheiben + Klötze v; Regelwartungsdienst |
| 18.04.2025 | 100.343 | Bremsscheiben + Klötze h; Luftfiltereinsatz ern; Motoröl b. Wartung; Regelwartungsdienst |
| 17.10.2024 | 75.675 | Kraftstofffilter ern; Motoröl b. Wartung; Ölfilter ern; Ölwechsel; Systemtest/Eigendiagnose; Wartung Sonstiges |
| 10.06.2024 | 56.292 | Regelwartungsdienst |
| 28.03.2024 | 47.515 | Motoröl b. Wartung; Ölwechsel |
| 29.09.2023 | 23.650 | Motoröl b. Wartung; Regelwartungsdienst; Wartung Sonstiges |