

Expertise

Protocol number: 45046957
Order No. / Reference: 26274843
Inspection date: 20 Apr 2026

Manufacturer: Opel

Model: Astra Sports Tourer 1.5 D Automatik Elegance

VIN: VXXKFCYHZTP1094323



Vehicle details

Manufacturer / Type / Model / Equipment

Opel Astra Sports Tourer 1.5 D Automatik Elegance

Vehicle Identification number VXXKFCYHZTP1094323

Mileage (Read) 46,733 km

First registration 20 Feb 2024

Number of holders 1

Power / Engine displacement 96 kw / 1,499 ccm

Fuel type / Cylinder Diesel / 4

Gearbox / Number of gears Automatic / 8

Type of drive Front drive

Type of vehicle Station wagon

Colour / colour code Vulkan Grau Metallic

Doors / Seats 5 / 5

Upholstery type Cloth / leather combination

Colour of upholstery Light grey-Black

readiness to drive Not roadworthy / moveable



Vehicle details

Maintenance booklet / proof	digital proof / complete	Next maintenance in	22,600 km
Last service on / at	11/2025 at 39,350 km		
Key is / should be	2 / 2	FZG documents	ZB#2 (B) was available (copy), ZB#1 (S) was not available.
		Letter No.	HB403991
Previous damage / Accident	Detectable	Repainting	Detectable
Inspection conditions	sufficient	Lifting equipment / pit	No
Test drive	Not performed	Engine function test	Performed
readiness to drive	Not roadworthy / moveable		
Manufacturer key number/ type code number	1889 / AEY 00107		
Emission standard	EURO6;WLTP;EA;PI/CI;M, N1, N2	fine dust sticker	
Permitted total weight	1,980 kg	Empty weight	

Tyres

Mounted tyres

#	Tyre size	Type of tyre	Manufacturer	Tread depth
1)	205/55 R16 91H	Winter tyres on Light alloy	Pirelli	5mm / 5mm
2)	205/55 R16 91H	Winter tyres on Light alloy	Pirelli	8mm / 8mm

Additional tyres

#	Tyre size	Type of tyre	Manufacturer	Tread depth
1)	225/45 R17 94V	Summer tyres on Light alloy	Michelin	5mm / 5mm
2)	225/45 R17 94V	Summer tyres on Light alloy	Michelin	6mm / 6mm

Replacement

Typ	Tyre size	Type of tyre	Manufacturer	Tread depth
Tirefit		Expiration date 08/2028		

Legend: Tread depth information for the left tire is listed first, for the right tire it is listed second on the axle in the direction of travel.



Equipment

Standard equipment

- Storage compartments
- Airbag: Front airbags, driver and front passenger
- Airbag: Front and rear outer head airbags
- Automatic activation of the hazard warning lights
- Exterior mirror housings in black
- On-board computer
- Roof rails
- Tachometer
- Electronic Stability Program (ESP) and Traction Control with engine and brake intervention (TCPlus)
- Transmission: 8-speed automatic transmission
- rear window wiper
- Wiring harness for trailer hitch
- Front headrests and 3 rear headrests, height adjustable
- LED ambient lighting
- LED headlights
- Illuminated makeup mirrors in both sun visors
- Center armrest, front and rear
- Multimedia infotainment system
- Electric parking brake
- Tire pressure monitoring system
- 180-degree reversing camera
- Keyless locking and starting system Keyless Open & Start
- safety net
- Solar Protect thermal insulation glazing
- Start/Stop System
- Pre-wiring for ISOFIX child seat mounting system
- Central locking with remote control
- Airbag: Chest-pelvis side airbags, driver and front passenger
- Anti-lock braking system (ABS)
- Exterior mirrors, electrically adjustable, heated and folding
- Hill Start Assist
- third brake light
- Diesel particulate filter (DPF) maintenance-free
- Electronic brake force distribution (EBD)
- Electric windows front and rear
- Front collision warning system
- Back window, heater
- Interior rearview mirror, automatically dimming
- Dual-zone automatic climate control
- Paintwork: Roof in car color
- LED interior lighting
- Steering wheel: Leather steering wheel, flattened, perforated, with steering wheel remote control and paddle shifters
- Fog light
- Tire repair kit
- Wheels: Alloy wheels 7.5 J x 17 (5 spokes) in silver/black
- Rear seat backrest folds forward in a 40:20:40 split
- Seat belts: Three-point seat belts in all seats
- Seats: Ergonomic active driver's seat, fabric/premium leather look Isabella
- 12V power outlet in the center console
- Electronic immobilizer

Extra equipment

- Navigation system (Multimedia infotainment system with 10" color touchscreen display and 10" driver information display; navigation system with integrated memory; 3D map display for Europe and Russia; dynamic route guidance via map and/or arrow display and voice prompts; TomTom Online Traffic; online POI search and route guidance; parking information; fuel price information; live weather; over-the-air map updates; intelligent voice control; "Hey Opel" shortcut button; 6 functions; active route suggestions)
- Seats: Ergonomic active seats for driver and front passenger in Isabella fabric/premium leatherette (Elegance) (certified by the German Campaign for Healthy Backs (AGR) - adjustable length, height, tilt, backrest angle, and seat cushion angle - electro-pneumatically adjustable lumbar support (height and length adjustable) - extendable thigh support - pockets on the backs of the front seats, driver and front passenger - Isabella fabric/premium leatherette, black - heated front seats and steering wheel - heated ThermaTec windshield)
- Electric tailgate, sensor-controlled (self-opening and self-closing via foot gesture)
- Heated windscreen, ThermaTec
- Intelli-Drive 1.0 (Forward Collision Warning with Automatic Emergency Braking, Pedestrian Detection, Active Lane Keeping Assist, Traffic Sign Recognition and Driver Alert System, Cross Traffic Alert and Automatic Speed Assist with Stop Function, Blind Spot Warning)
- Paint finish: Metallic
- Seats: Ergonomic active driver's seat in Isabella fabric/premium leatherette (Elegance) (certified by the German Campaign for Healthy Backs (AGR) - adjustable length, height, tilt, backrest angle, and seat cushion angle - electro-pneumatically adjustable lumbar support (height and length adjustable) - extendable thigh support - pockets on the backs of the front seats, driver and front passenger - Isabella fabric/premium leatherette, black - heated front seats and steering wheel - heated ThermaTec windshield)



Brief expert findings

Documents submitted	At the time of the inspection, the vehicle registration certificate Part 2 (title) was available, but the vehicle registration certificate Part 1 (document) was not. (Copy)
VIN comparison	The vehicle identification number (VIN) was read from the vehicle and its conformity with the submitted documents was confirmed by the undersigned during the inspection.
Inspection	The inspection conditions were sufficient for the assessment of the vehicle. No lifting equipment or pit was available for inspecting the vehicle. Therefore, inspection of the vehicle's underside was only possible to a limited extent.
Test drive	No test drive/shunting maneuver was carried out during the inspection of the vehicle.
Engine function test	An engine test run was performed.
readiness to drive	The vehicle was not capable of driving under its own power at the time of inspection, but can be moved on its own axle with the aid of assistance.

Value reducing factors

No.	Component group	Description
1	Front bumper	Front bumper - Scratch(es) - Smart repair
2	2nd wheel set	1 tyre - Damaged - Replace
3	Engine	Engine (Riemen schleifen im Leerlauf) - Noise - Perform diagnosis
4	2nd wheel set	1 alloy rim - Scratched - Replace
5	2nd wheel set	1 alloy rim - Scratched - Replace
6	Rear bumper	Rear bumper - Dent / paintcoat damage - Repair and paint

Wear and tear

No.	Component group	Description
1	Trim / covers	Boot lid - interior trim - Scratch(es) - No deduction
2	Bonnet	Bonnet - Stone chips - No deduction
3	Vehicle glazing	Windscreen - Stone chips - No deduction

The vehicle shows signs of wear and tear commensurate with its age and use.

Repainting

No. Repainting

- 1 Mudguard - left side, Side panel - rear left side, Door - rear left side, Professionally carried out, Invoice of repair done Non-existent

Paint coat thickness measurement

Mudguard - left side	196 µm	Side panel - rear left side	163 µm
Door - rear left side	162 µm		



Order/Scope of Order

An order was placed to prepare a sales report for the described vehicle. This report includes the following:

- Description of key vehicle information
- Documentation of equipment features
(Delivery by third-party service providers)
- Documentation of damage, defects, missing parts
- Documentation of prior damage, unrepaired prior damage, repainting
- A brief visual or functional inspection of the equipment details, if possible.
(Functional testing of driver assistance systems is not included in the scope of services!)
- a photographic documentation of the vehicle

Basis for the order

This product is based on the guidelines for vehicle returns and valuations published by Alphabet Fleet GmbH. The expert makes the specific findings in each individual case objectively, within the framework of the prescribed standards, based on their own expertise.

The vehicle inspection takes place in a fully assembled, unassembled state.

Damage or defects that can only be detected during disassembly/diagnostic work or through further investigation remain within the realm of prognostic risk. An increased risk exists due to concealed defects caused by fraudulent misrepresentation and which were not identifiable by the expert.

Damage or defects resulting from normal use or wear and tear of the vehicle will be accepted in accordance with the applicable standard.

There was no explicit identification or monetary consideration of the expected features within the product.

Features which, in their nature and extent, slightly exceed normal use but do not constitute unacceptable damage, will be documented and indicated as signs of wear, if applicable.

Damage or defects that, according to the applicable standard, can no longer be attributed to normal use or wear and tear are listed under "Value Reducing Factors" in the product description.

Depending on the product specification, a monetary ID can be provided. If this takes place, the costs can be 100% d or pro rata depending on the vehicle's age and mileage.

Comments

- Winterradsatz ist kein Bestandteil des Auslieferungsumfangs.



Figure 1: Diagonal front (left)



Figure 2: Diagonal front (right)



Figure 3: Diagonal rear (left)



Figure 4: Diagonal rear (right)



Figure 5: Interior - front

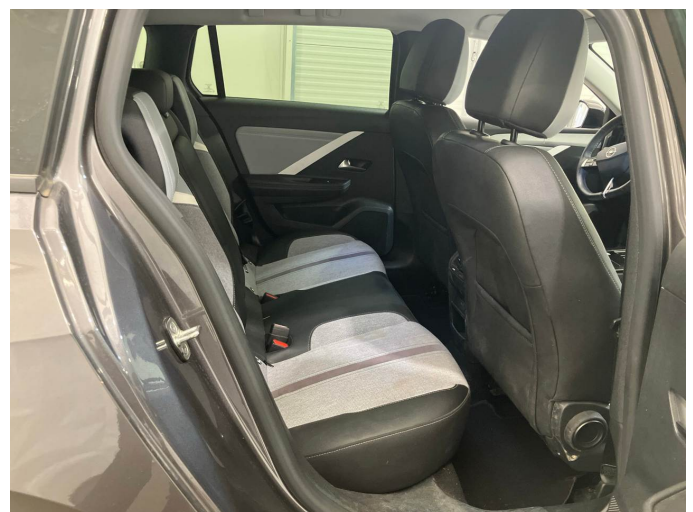


Figure 6: Interior - rear

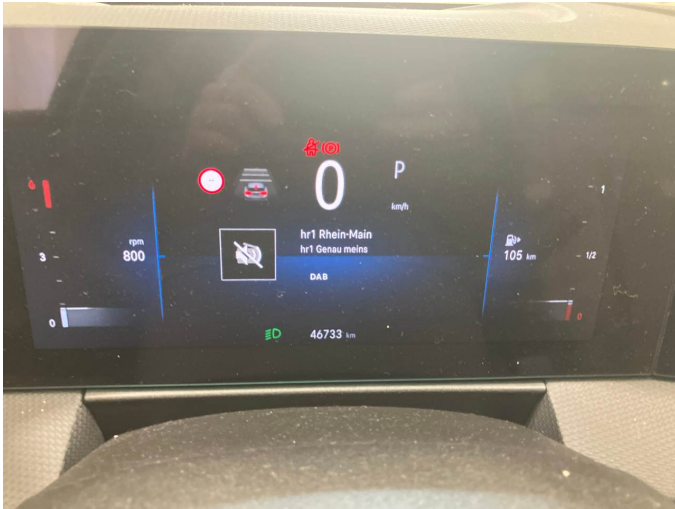


Figure 7: Instrument cluster



Figure 8: Instrument panel



Figure 9: Interior 360° view



Figure 10: Cargo area



Figure 11: VIN



Figure 12: Mounted tyres



Figure 13: Documents

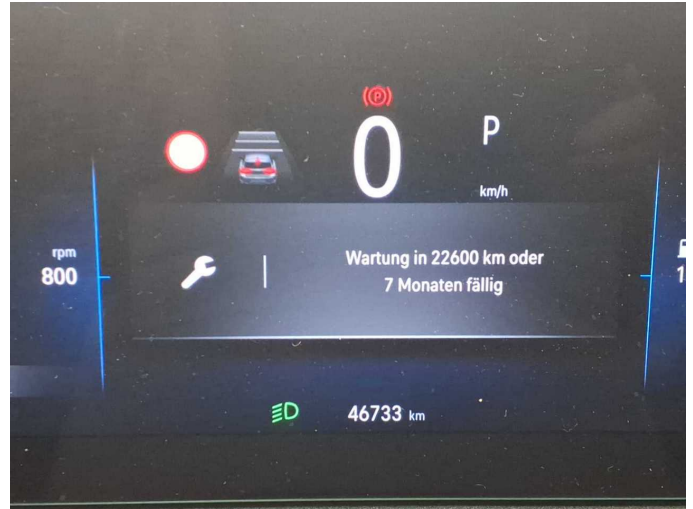


Figure 14: Documents



Figure 15: Additional tyres



Figure 16: Navigation



Figure 17: Misc.



Figure 18: Misc.



Figure 19: Misc.



Figure 20: Misc.



Figure 21: Misc.



Figure 22: Misc.



Figure 23: Misc.



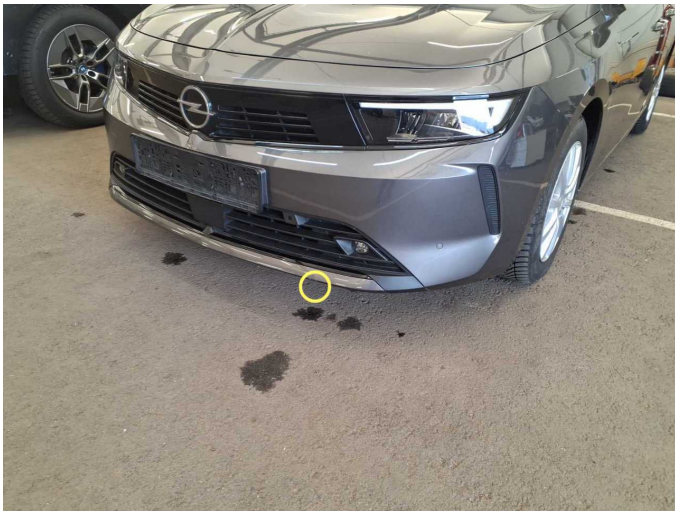
Figure 24: Misc.



Figure 25: Misc.



Figure 26: Misc.



Damage 1: Front bumper: Front bumper - Scratch(es) - Smart repair



Damage 1: Front bumper: Front bumper - Scratch(es) - Smart repair



Damage 2: 2nd wheel set: 1 tyre - Damaged - Replace



Damage 2: 2nd wheel set: 1 tyre - Damaged - Replace



Damage 4: 2nd wheel set: 1 alloy rim - Scratched - Replace



Damage 4: 2nd wheel set: 1 alloy rim - Scratched - Replace



Damage 4: 2nd wheel set: 1 alloy rim - Scratched - Replace



Damage 5: 2nd wheel set: 1 alloy rim - Scratched - Replace



Damage 5: 2nd wheel set: 1 alloy rim - Scratched - Replace



Damage 6: Rear bumper: Rear bumper - Dent / paintcoat damage - Repair and paint



Damage 6: Rear bumper: Rear bumper - Dent / paintcoat damage - Repair and paint



Damage 6: Rear bumper: Rear bumper - Dent / paintcoat damage - Repair and paint



Damage 6: Rear bumper: Rear bumper - Dent / paintcoat damage - Repair and paint



Repainting 1: Mudguard - left side, Side panel - rear left side, Door - rear left side



Repainting 1: Mudguard - left side, Side panel - rear left side, Door - rear left side



Repainting 1: Mudguard - left side, Side panel - rear left side, Door - rear left side



Repainting 1: Mudguard - left side, Side panel - rear left side, Door - rear left side



Repainting 1: Mudguard - left side, Side panel - rear left side, Door - rear left side



Repainting 1: Mudguard - left side, Side panel - rear left side, Door - rear left side



Wartungshistorie

(gemäß Auftraggeber Informationen)

Fahrgestellnummer: VXXFCYHZTP1094323

Hersteller / Modell: OPEL OPEL Astra Sports Tourer 1.5 D Automatik Elegance

Datum	KM-Stand	Beschreibung
24.11.2025	39.350	Motoröl b. Wartung; Ölfilter ern; Regelwartungsdienst; Wartung Sonstiges
12.12.2024	18.465	Motoröl b. Wartung; Ölfilter ern; Regelwartungsdienst; Wartung Sonstiges