

Expertise

Protocol number: 45948028
Order No. / Reference: 26335420
Inspection date: 15 Jun 2026

Manufacturer: Volvo

Model: V60 T6 AWD Recharge Core

VIN: YV1ZWH1V2P1531245



Vehicle details

Manufacturer / Type / Model / Equipment

Volvo V60 T6 AWD Recharge Core

Vehicle Identification number YV1ZWH1V2P1531245

Mileage (Read) 95,303 km

First registration 17 Nov 2022

Number of holders 1

Next periodical technical inspection 10/2027
(Report on hand)

Power / Engine displacement 186 kw / 1,969 ccm

Fuel type / Cylinder Hybr.B/E ext.aufll / 4

Gearbox / Number of gears Automatic / 8

Type of drive All-wheel drive

Type of vehicle Station wagon

Colour / colour code Black Stone

Doors / Seats 5 / 5

Upholstery type Cloth

Colour of upholstery Anthracite

readiness to drive Not roadworthy /
moveable



Vehicle details			
Maintenance booklet / proof	Available / complete	Next maintenance in	55 Tag(e)
Last service on / at	08/2025 at 74,621 km		
Key is / should be	2 / 2	FZG documents	ZB#2 (B) was available (copy), ZB#1 (S) was not available.
		Letter No.	GQ202443
Previous damage / Accident	Detectable	Repainting	None detectable
Inspection conditions	sufficient	Lifting equipment / pit	No
Test drive	Not performed	Engine function test	Performed
readiness to drive	Not roadworthy / moveable		
Manufacturer key number/ type code number	9101 / BOH 00027		
Emission standard	EURO6;WLTP;AP;PI/CI; M, N1 I	fine dust sticker	
Permitted total weight	2,530 kg	Empty weight	

Tyres

Mounted tyres				
#	Tyre size	Type of tyre	Manufacturer	Tread depth
1)	235/45 R18 98W	Summer tyres on Light alloy	Michelin	4mm / 4mm
2)	235/45 R18 98W	Summer tyres on Light alloy	Michelin	4mm / 4mm
Additional tyres				
#	Tyre size	Type of tyre	Manufacturer	Tread depth
1)	235/45 R18 98V	Winter tyres on Light alloy	Pirelli	7mm / 7mm
2)	235/45 R18 98V	Winter tyres on Light alloy	Pirelli	7mm / 7mm
Replacement				
Typ	Tyre size	Type of tyre	Manufacturer	Tread depth
	Tirefit	Expiration date 10/2026		

Legend: Tread depth information for the left tire is listed first, for the right tire it is listed second on the axle in the direction of travel.

TÜV SÜD Auto Partner GmbH
Wiesenring 2
04159 Leipzig

Inspection location
ARS Altmann AG Automobillogistik
Römerstraße 3
64560 Riedstadt



Equipment



Standard equipment

- ABS - Anti-lock Braking System
- Front passenger airbag can be deactivated
- All-wheel drive (AWD) with Instant Traction
- Android infotainment system
- Electrically adjustable exterior mirrors
- Outdoor temperature display
- Hill Start Assist (HSA)
- fog sensor
- On-board computer with vehicle control functions
- Chrome applications
- Roof edge spoiler
- Deactivation of the high-voltage battery in the event of a collision
- Rear parking assist
- Electronic Stability Control (ESC)
- Electronic differential lock
- Electric windows front and rear
- Chrome window surround
- Front grille in waterfall design in chrome
- Transmission: 8-speed automatic transmission
- Automatic tailgate (electric)
- IDIS (Intelligent Driver Information System)
- Interior lighting
- ISOFIX anchors for the outer rear seats
- Child safety lock for the rear doors, electric
- Headrests of the 2nd row of seats foldable, electrically adjustable
- Charging box under the cargo floor
- Stainless steel loading sill protector in the luggage compartment
- Cargo area roller blind
- Steering wheel adjustable for height and reach
- Air purification system
- Front center armrest with integrated storage compartment and cup holders
- One Pedal Drive
- Parking ticket holder
- Upholstery: Premium textile comfort seats
- Radio accessories: Subwoofer
- Rain sensor
- Wheels: 18" 5-twin-spoke alloy wheels - diamond-cut/graphite look
- Safety Assistance
- Safety braking system with disc brakes all around (internally ventilated)
- Seats: Driver and front passenger seats are height-adjustable (electrically)
- Seats: Rear seats in a 40/60 split or fully foldable with pass-through function
- Power socket
- First aid kit and warning triangle
- Preparation for Trailer Stability Assist (TSA)
- WHIPS whiplash protection system
- Acoustic Vehicle Alerting System (AVAS)
- Driver and passenger side airbags with two-stage deployment system
- Electrically folding exterior mirrors
- Heated exterior mirrors and rear window (automatic)
- Attachment system for carrier bags in the luggage compartment
- LED turn signals integrated into the exterior mirrors
- third brake light
- Colored glazing
- Aluminum roof rails (integrated)
- Digital services including Google Maps navigation system
- Digital Instrumentation 2nd Gen.
- Aluminum door sill plates with Recharge lettering at the front
- Advanced air purification system with fine dust filtration according to air quality standard PM2.5
- Automatic emergency braking
- Luggage compartment partition net
- Hooks in the luggage compartment
- rear window wiper
- Interior and exterior mirrors with automatic dimming function
- Keyless Drive (electronic access system)
- Automatic air conditioning
- Front headrests
- Paint finish: Solid
- Charging cable Schuko/Type 2 (Mode 2), 7 m length, single-phase, 10 A (for connection to a standard 230-volt household socket)
- LED headlights "Thor's Hammer"
- Steering wheel: Multifunction buttons on the steering wheel
- Illuminated makeup mirror for driver and front passenger
- Fog light
- Emergency brake lights
- Electric parking brake
- Particulate filter: Gasoline particulate filter
- Radio: High Performance Sound audio system
- Radio accessories: Two USB-C ports on the back of the center console
- Wheels: Tire pressure monitoring system (passive)
- Wheel accessories: Tire sealant
- Speed-sensitive power steering
- Seat belts
- Safety steering column (adaptive)
- Seats: Lumbar support (2-way electrically adjustable) for driver and front passenger seats
- Auxiliary heater including timer
- Start/Stop technology
- Fuel filler neck with misfuelling protection
- Lashing eyes in the luggage compartment (foldable)
- Immobiliser
- Central locking system with two remote controls and integrated emergency keys



Extra equipment

- Towbar (semi-electric)
- Package: Driver Assistance Package (Driver Assistance - Adaptive Cruise Control - Emergency Stop Assist (automatic emergency braking system) - Pilot Assist (lane guidance assistant with adaptive cruise control up to speeds of 130 km/h) - Driver Awareness - Blind Spot Information System - Blind Spot Assist including Lane Change Warning with steering intervention - Cross Traffic Alert - Cross traffic warning with braking intervention - Rear impact mitigation)
- Package: Parking Assistance Package (front and rear parking aid with automatic braking intervention (rear) - reversing camera)
- Side and rear windows tinted (from the B-pillar back)
- Windscreen, heater
- Package: Lighting Package (Headlight cleaning system - Full LED headlights "Thor's Hammer" Active High Beam with extended high beam, dynamic cornering lights, intelligent high beam assist with adaptive headlight range control and integrated LED daytime running lights - Ambient lighting, Extended interior lighting with: Ambient lighting (multicolor) front/rear, Exit lights front/rear, Illuminated door pockets and door handles front/rear, Footwell lighting rear, Reading lights rear, Work light on the tailgate)
- Package: Winter Package (front seat heating - rear seat heating (outer seats of the 2nd row) - steering wheel heating)

Brief expert findings

Documents submitted	At the time of the inspection, the vehicle registration certificate Part 2 (title) was available, but the vehicle registration certificate Part 1 (document) was not. (Copy)
VIN comparison	The vehicle identification number (VIN) was read from the vehicle and its conformity with the submitted documents was confirmed by the undersigned during the inspection.
Inspection	The inspection conditions were sufficient for the assessment of the vehicle. No lifting equipment or pit was available for inspecting the vehicle. Therefore, inspection of the vehicle's underside was only possible to a limited extent.
Test drive	No test drive/shunting maneuver was carried out during the inspection of the vehicle.
Engine function test	An engine test run was performed.
readiness to drive	The vehicle was not capable of driving under its own power at the time of inspection, but can be moved on its own axle with the aid of assistance.

Value reducing factors

No.	Component group	Description
1	Sill - right side	Sill - Dent / paintcoat damage - Smart repair
2	Wheel / tyres	Tyre - front right side (nicht fahrbereit) - Broken / torn - Replace
3	Wheel / tyres	Alloy rim - front left side - Scratch(es) - Loss in value
4	Wheel / tyres	Alloy rim - front right side - Scratch(es) - Loss in value
5	Wheel / tyres	Alloy rim - rear right side - Scratched - Loss in value
6	Front bumper	Front bumper - Scratched - Paint

Wear and tear

No.	Component group	Description
1	Bonnet	Bonnet - Stone chips - No deduction
2	Vehicle glazing	Windscreen - Stone chips - No deduction
3	Rear bumper	Rear bumper - Scratch(es) - No deduction
4	2nd wheel set	1 tyre (Nicht Bestandteil der Ausstattung) - Broken / torn - No deduction
5	2nd wheel set	2 alloy rims - Scratch(es) - No deduction

The vehicle shows signs of wear and tear commensurate with its age and use.



Previous damages

No.	Previous damage	Extent of damage (Net)
1	Front, Provided by user / customer, from 24 May 2023	759,62 €

Order/Scope of Order

An order was placed to prepare a sales report for the described vehicle. This report includes the following:

- Description of key vehicle information
- Documentation of equipment features
(*Delivery by third-party service providers*)
- Documentation of damage, defects, missing parts
- Documentation of prior damage, unrepaired prior damage, repainting
- A brief visual or functional inspection of the equipment details, if possible.
(*Functional testing of driver assistance systems is not included in the scope of services!*)
- a photographic documentation of the vehicle

Basis for the order

This product is based on the guidelines for vehicle returns and valuations published by Alphabet Fleet GmbH. The expert makes the specific findings in each individual case objectively, within the framework of the prescribed standards, based on their own expertise.

The vehicle inspection takes place in a fully assembled, unassembled state.

Damage or defects that can only be detected during disassembly/diagnostic work or through further investigation remain within the realm of prognostic risk. An increased risk exists due to concealed defects caused by fraudulent misrepresentation and which were not identifiable by the expert.

Damage or defects resulting from normal use or wear and tear of the vehicle will be accepted in accordance with the applicable standard.

There was no explicit identification or monetary consideration of the expected features within the product.

Features which, in their nature and extent, slightly exceed normal use but do not constitute unacceptable damage, will be documented and indicated as signs of wear, if applicable.

Damage or defects that, according to the applicable standard, can no longer be attributed to normal use or wear and tear are listed under "Value Reducing Factors" in the product description.

Depending on the product specification, a monetary ID can be provided. If this takes place, the costs can be 100% d or pro rata depending on the vehicle's age and mileage.

Previous damages

According to available information previous damages were repaired at the vehicle. Traces of repairs, which allow conclusions about the area of repair, were not recognizable during the inspection.

Comments

- Die Unterbodenbesichtigung war nur ebenerdig & eingeschränkt möglich. Mehrkosten möglich.



Figure 1: Diagonal front (left)



Figure 2: Diagonal front (right)



Figure 3: Diagonal rear (left)



Figure 4: Diagonal rear (right)

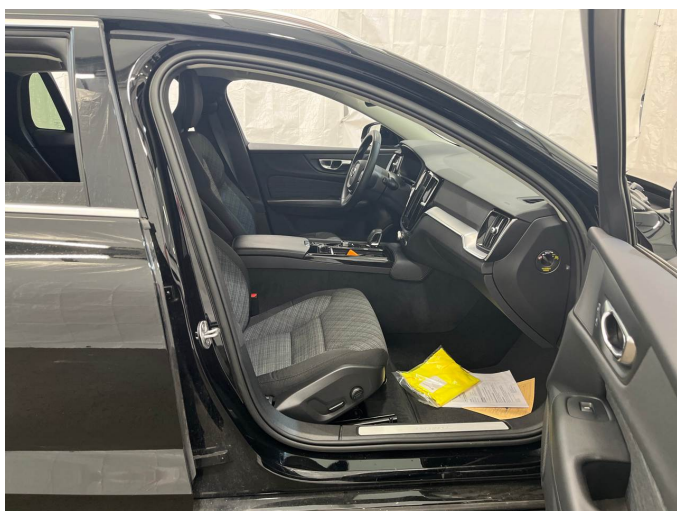


Figure 5: Interior - front



Figure 6: Interior - rear



Figure 13: Documents

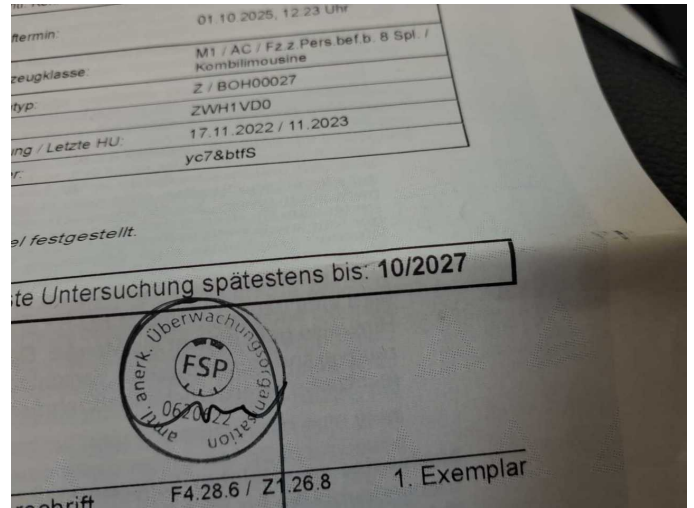


Figure 14: Documents

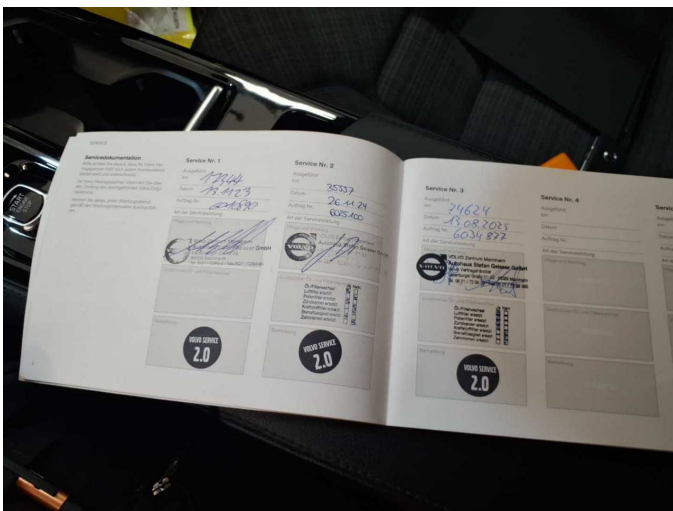


Figure 15: Documents



Figure 16: Documents

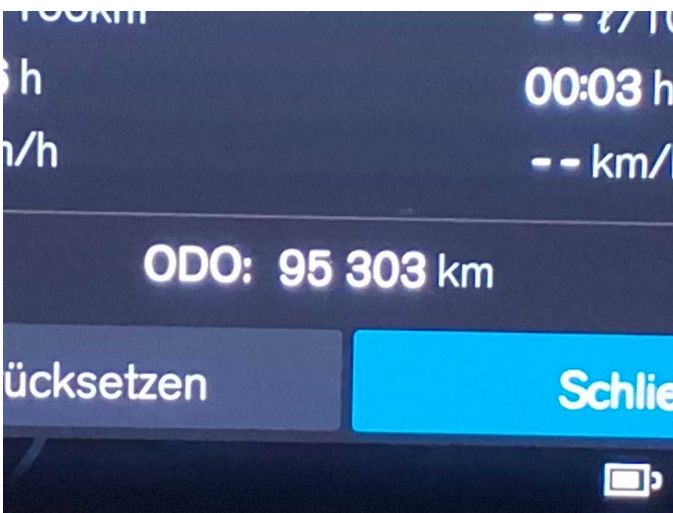


Figure 17: Documents



Figure 18: Additional tyres

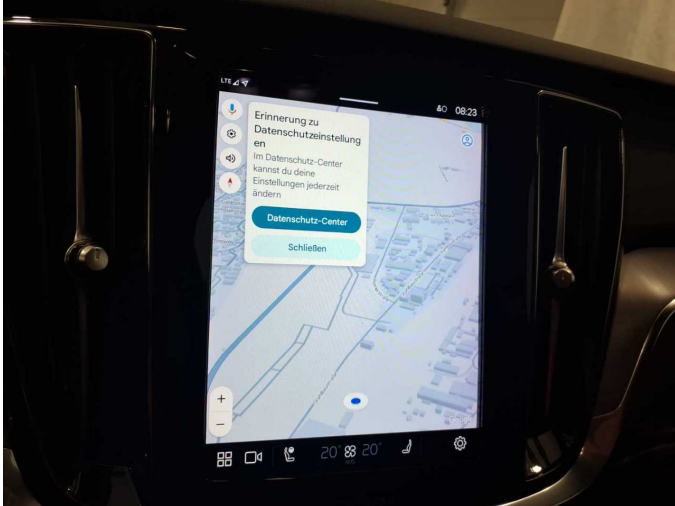


Figure 19: Navigation



Figure 20: Misc.



Figure 21: Misc.



Figure 22: Misc.

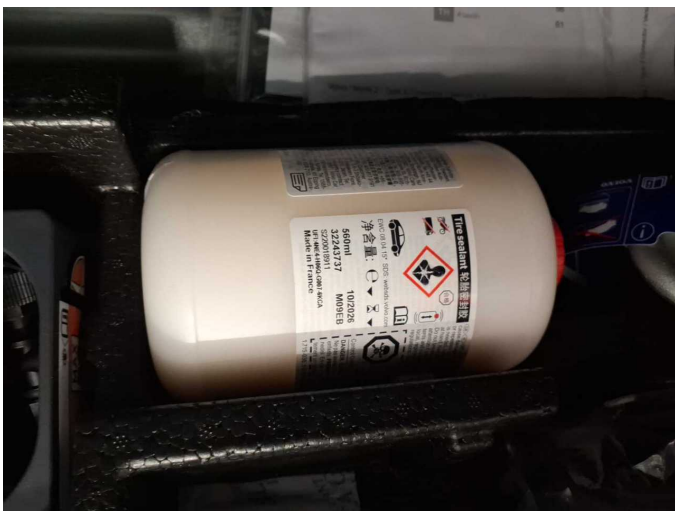


Figure 23: Misc.



Figure 24: Misc.



Figure 25: Misc.



Figure 26: Misc.



Figure 27: Misc.



Figure 28: Misc.



Figure 29: Misc.



Figure 30: Misc.



Figure 31: Misc.



Figure 32: Misc.



Figure 33: Misc.



Figure 34: Misc.

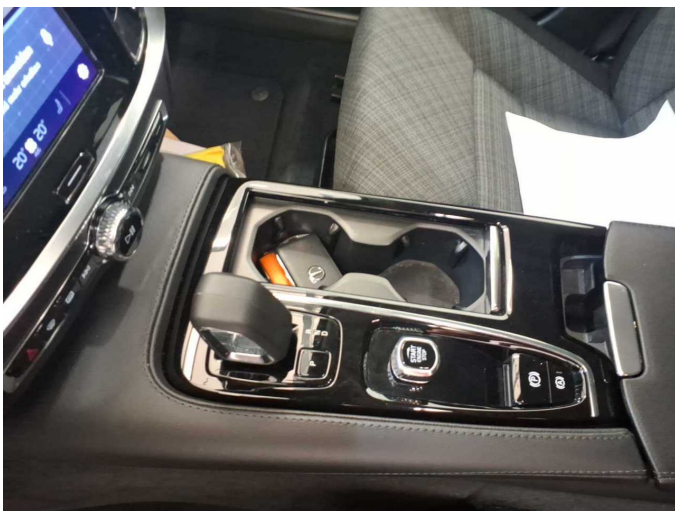


Figure 35: Misc.

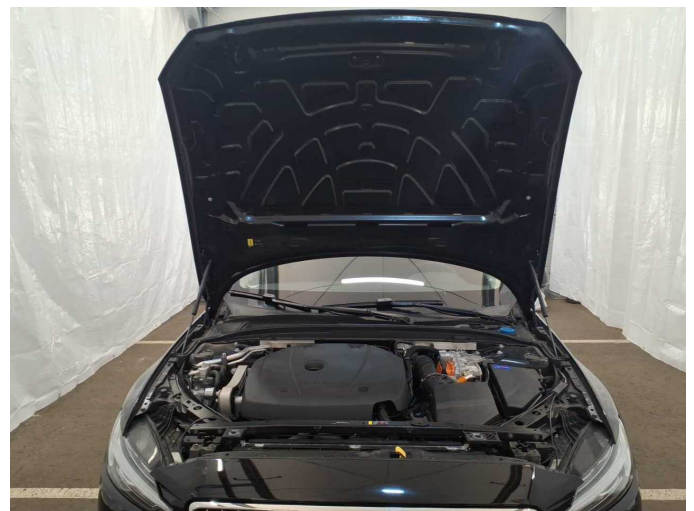


Figure 36: Misc.



Figure 37: Misc.



Damage 1: Sill - right side: Sill - Dent / paintcoat damage - Smart repair



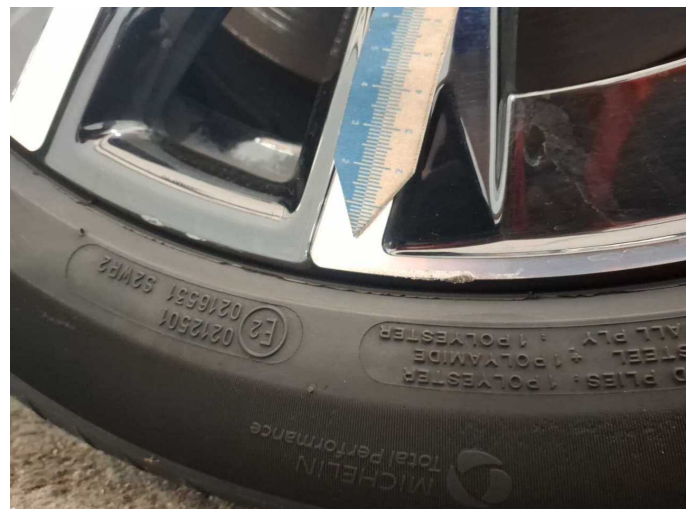
Damage 1: Sill - right side: Sill - Dent / paintcoat damage - Smart repair



Damage 2: Wheel / tyres: Tyre - front right side (nicht fahrbereit) - Broken / torn - Replace



Damage 2: Wheel / tyres: Tyre - front right side (nicht fahrbereit) - Broken / torn - Replace



Damage 3: Wheel / tyres: Alloy rim - front left side - Scratch(es) - Loss in value



Damage 3: Wheel / tyres: Alloy rim - front left side - Scratch(es) - Loss in value



Damage 4: Wheel / tyres: Alloy rim - front right side - Scratch(es) - Loss in value



Damage 4: Wheel / tyres: Alloy rim - front right side - Scratch(es) - Loss in value



Damage 5: Wheel / tyres: Alloy rim - rear right side - Scratched - Loss in value



Damage 5: Wheel / tyres: Alloy rim - rear right side - Scratched - Loss in value



Damage 5: Wheel / tyres: Alloy rim - rear right side - Scratched - Loss in value



Damage 6: Front bumper: Front bumper - Scratched - Paint



Damage 6: Front bumper: Front bumper - Scratched - Paint



Wear and tear 4: 2nd wheel set: 1 tyre (Nicht Bestandteil der Ausstattung) - Broken / torn - No deduction



Wear and tear 5: 2nd wheel set: 2 alloy rims - Scratch(es) - No deduction



Wear and tear 5: 2nd wheel set: 2 alloy rims - Scratch(es) - No deduction



Wartungshistorie

(gemäß Auftraggeber Informationen)

Fahrgestellnummer: YV1ZWH1V2P1531245

Hersteller / Modell: VOLVO VOLVO V60 T6 AWD Recharge Core

Datum	KM-Stand	Beschreibung
01.10.2025	80.868	HU + AU
13.08.2025	74.621	Luffiltereinsatz ern; Motoröl b. Wartung; Ölfilter ern; Regelwartungsdienst; Systemtest/Eigendiagnose; Wartung Sonstiges; Zündkerzen ern
27.11.2024	35.557	Bremsflüssigkeit; Bremsflüssigkeit ern; Motoröl b. Wartung; Ölfilter ern; Regelwartungsdienst; Reparatur Sonstiges; Wartung Sonstiges
13.11.2023	17.350	Motoröl b. Wartung; Ölfilter ern; Regelwartungsdienst; Wartung Sonstiges