

Expertise

Protocol number: 46025641
Order No. / Reference: 26460897
Inspection date: 18 Jun 2026

Manufacturer: Skoda

Model: Superb Combi 1.4 TSI iV DSG Sportline

VIN: TMBJW7NP2N7017348



Vehicle details

Manufacturer / Type / Model / Equipment

Skoda Superb Combi 1.4 TSI iV DSG Sportline

Vehicle Identification number	TMBJW7NP2N7017348
Mileage (Read)	114,671 km
First registration	8 Dec 2021
Number of holders	1
Next periodical technical inspection	12/2026 (Report not on hand)

Power / Engine displacement	115 kw / 1,395 ccm
Fuel type / Cylinder	Hybr.B/E ext.aufll / 4
Gearbox / Number of gears	Automatic / 6
Type of drive	Front drive
Type of vehicle	Station wagon

Colour / colour code	Black Magic Pearlescent (F9R)
Doors / Seats	5 / 5
Upholstery type	Alcantara / Leather
Colour of upholstery	Black-Anthracite

Re-import	no
readiness to drive	Roadworthy



Vehicle details			
Maintenance booklet / proof	digital proof / complete	Next maintenance in	4,400 km
Last service on / at	04/2024 at 58,625 km		
Key is / should be	2 / 2	FZG documents	ZB#2 (B) was available (copy), ZB#1 (S) was not available.
		Letter No.	GG187637
Previous damage / Accident	None detectable	Repainting	Detectable
Inspection conditions	sufficient	Lifting equipment / pit	yes
Test drive	Not performed	Engine function test	Performed
readiness to drive	Roadworthy		
Manufacturer key number/ type code number	8004 / AUJ 00120		
Emission standard	EURO6;WLTP;AP;PI/CI; M, N1 I	fine dust sticker	
Permitted total weight	2,291 kg	Empty weight	

Tyres

Mounted tyres				
#	Tyre size	Type of tyre	Manufacturer	Tread depth
1)	235/40 R19 96V	Winter tyres on Light alloy	Bridgestone	6mm / 6mm
2)	235/40 R19 96V	Winter tyres on Light alloy	Bridgestone	6mm / 6mm
Additional tyres				
#	Tyre size	Type of tyre	Manufacturer	Tread depth
1)	235/40 R19 96W	Summer tyres on Light alloy	Bridgestone	4mm / 4mm
2)	235/40 R19 96W	Summer tyres on Light alloy	Bridgestone	5mm / 5mm
Replacement				
Typ	Tyre size	Type of tyre	Manufacturer	Tread depth
	Tirefit	Expiration date 07/2025		

Legend: Tread depth information for the left tire is listed first, for the right tire it is listed second on the axle in the direction of travel.

TÜV SÜD Auto Partner GmbH
Wiesenring 2
04159 Leipzig

Inspection location
Hartmann Fleet Professionals GmbH
Industriestraße 11
36272 Niederaula



Equipment



Standard equipment

- Storage compartments (ticket holder on the windshield, 4 roof grab handles, rear with coat hooks, coat hooks on the B-pillar, holder for the warning vests in the front doors, glasses compartment in the headliner, storage compartments in the door panels (front and rear) with 1.5l bottle holders, cup holder in the front center console with easy-open bottle opening, storage pockets on the front seat backrests, storage compartments behind the wheel arches in the trunk including cargo elements, illuminated trunk)
- Hill start assist
- black headliner
- Sportline decorative inlay
- Third brake light
- stainless steel pedals
- Electronic parking brake including auto-hold function
- Electronic transverse differential lock (XDS+)
- Driving light assistant and rain sensor (tunnel light, coming and leaving home function)
- Chassis: Adaptive chassis DCC (10 mm lowering, adjustable damper setting) (including driving profile selection (Normal, Comfort, Eco, Sport, Individual))
- Front radar assist including city emergency braking function (The front radar assist warns of impending collisions and initiates braking to reduce the force of an unavoidable impact. The front radar assist continuously monitors the distance to the vehicle ahead using a radar sensor integrated into the radiator grille.)
- Heated rear window
- Rear spoiler
- Kessy, keyless entry and start-stop system
- Boot cover, roll-up and removable, semi-automatic
- Radiator grille slats, frame, side moldings, exterior mirror caps, window surrounds in black
- Metal loading sill protector
- Remote release of the rear seat backrests in the trunk
- Steering wheel: 3-spoke leather steering wheel in sport design with multifunction buttons (including leather gearshift and handbrake levers, heated)
- Steering wheel: Heated steering wheel (2 spokes) (with paddle shifters)
- Matrix LED headlights (AFS - dynamic high beam assist - automatic headlight range control - headlight cleaning system - LED taillights in crystal glass look - incl. dynamic turn signals)
- Color multifunction display in the instrument cluster
- Navigation: Amundsen 8" Dynamic Navigation System
- Otto particulate filter
- Radio accessories: 2 USB-C ports in the center console
- Radio accessories: SmartLink+ (Apple CarPlay - Android Auto - MirrorLink - SmartGate)
- Tire pressure monitoring
- Wheels: 19" Vega alloy wheels, diamond-cut/anthracite (8J x 19" ET 44 with 235/40 R19 tires)
- Airbag, driver and switchable passenger airbag
- Airbag, driver's knee airbag
- Airbag, head airbags
- Airbag, front side airbags
- Anti-lock braking system (ABS)
- Traction control (ASR)
- Electrically adjustable and heated exterior mirrors
- Electrically folding exterior mirrors (with boarding lights - interior and exterior mirrors with automatic dimming)
- Illuminated glove compartment
- Hydraulic brake assist (HBA)
- Roof rails, painted in glossy black
- Tachometer
- Dynamic Light Assistant (Masked Continuous High Beam)
- Electric tailgate opening (including boot cover and multifunction storage compartment)
- Electronic Stability Control (ESC)
- Driving profile selection including customizable key (Normal, Eco, Sport, Individual) (incl. additional key)
- Chassis: Adaptive chassis DCC (including driving profile selection and customizable key, without lowering)
- Electric windows front and rear, including anti-pinch protection and child safety lock
- Front and rear footwell lighting
- Cruise control system (cruise control) including speed limiter
- Transmission: 6-speed direct-shift gearbox (DSG)
- Tinted windows
- Rear window wiper including windshield washer system
- ISOFIX preparation on the outer rear seats, including top tether
- Headrests integrated into front seats, rear headrests height-adjustable
- Charging cable, Mode 2, Schuko, 10A
- LED ambient lighting (decorative strips with selectable color climate, reading lamps, door handles and footwell as well as sun visors with LED lighting - projection of the SKODA lettering from the underside of the door onto the floor (front doors))
- Steering wheel: height and reach adjustable
- Reading lights at the front and rear of the headliner
- Rear center armrest with cup holders and pass-through option
- Front center armrest with storage compartment
- Engine drag torque control (MSR)
- Multi-collision brake
- LED fog lights with integrated cornering lights
- Upholstery: Alcantara trim in sport black
- Radio accessories: Digital radio reception DAB+
- Radio accessories: Wireless SmartLink (Apple CarPlay, Android Auto)
- Tire mobility kit (tire repair spray incl. compressor)
- Heated windshield washer nozzles
- Electromechanical power steering



- Superb safety belts (Height-adjustable three-point front seat belts with belt tensioners - Three three-point rear seat belts - Belt fastening indicator for all seats)
- Seats: Height-adjustable front seats
- Seats: Rear seat backrest split 60:40, foldable
- SKODA Care Connect (SOS emergency call function (Emergency Call incl. automatic activation in the event of an accident with airbag deployment), Mobility service (connection for rapid assistance in case of breakdown), Information service (connection to the hotline for all questions relating to vehicle functions), Free remote vehicle access for 1 year (Remote Access) with access to vehicle data and functions via smartphone, e.g. parking position, activating hazard warning lights, current fuel level)
- Chrome-plated elements (on air vents, light switches, music or navigation systems, air conditioning)
- Central locking with remote control

- Seats: Heated front seats
- Seats: Adjustable lumbar support in the front seats
- Seats: Electrically adjustable front seats with memory function
- Seats: Front sports seats
- Sun visor on driver and passenger side with illuminated make-up mirror
- Start/stop system including brake energy recuperation
- 12V socket in the trunk
- 12V socket in the center console, front and rear
- Sunset (rear window and rear side windows tinted dark)
- Telephone: Convenient hands-free phone system with Bluetooth (without connection to an external antenna)
- Textile floor mats
- Lashing eyes in the trunk
- Immobiliser

Extra equipment

- Adaptive Cruise Control (ACC) (control range up to 210 km/h) (replaces cruise control)
- Climatronic air conditioning (3-zone) (fully automatic, separately adjustable for driver, front passenger and rear seats)
- Package: Business Columbus (Combi) (dynamic Columbus radio navigation system, capacitive 9.2" touchscreen, color Maxi-Dot display, Wi-Fi hotspot, voice control, phone box with inductive charging function (connection via external antenna), driver fatigue detection, 230V socket and USB ports, tablet holder in the rear, Sunset (dark tinted rear window and rear side windows), Infotainment Online (3-year subscription), heated rear seats and heated steering wheel, cargo net in the trunk, luggage net partition)
- Swiveling trailer hitch including trailer stabilization
- Digital instrument cluster (Virtual Cockpit) 10.2"
- Paint finish: Pearl effect
- Charging cable for AC charging stations (Mode 3 charging cable, Type 2, 16A)
- Front and rear parking sensors
- Radio: CANTON sound system (11 speakers - 1 subwoofer - digital equalizer 610W)
- Seats: Manual seat length adjustment for the electric front seats
- Sunshade roller blind for the rear side windows
- Lane Assist, Blind Spot Detection, Parking Assist, Emergency Assist and Traffic Jam Assist (Lane Assist with adaptive lane guidance)
- Traffic sign recognition for navigation systems

Brief expert findings

Documents submitted	At the time of the inspection, the vehicle registration certificate Part 2 (title) was available, but the vehicle registration certificate Part 1 (document) was not. (Copy)
VIN comparison	The vehicle identification number (VIN) was read from the vehicle and its conformity with the submitted documents was confirmed by the undersigned during the inspection.
Inspection	The inspection conditions were sufficient for the assessment of the vehicle. Lifting equipment and/or a pit were available for examining the vehicle.
Test drive	No test drive/shunting maneuver was carried out during the inspection of the vehicle.
Engine function test	An engine test run was performed.
readiness to drive	The vehicle was roadworthy at the time of inspection.

Value reducing factors

No.	Component group	Description
1	Equipment	Tirefit filler - Expired - Replace
2	Side panel - rear right side	Side panel (Welliger Untergrund) - Unprofessionally repaired - Repair and paint



Wear and tear

No.	Component group	Description
1	Bonnet	Bonnet - Stone chips - No deduction

The vehicle shows signs of wear and tear commensurate with its age and use.

Repainting

No. Repainting

1	Side panel - rear right side, Unprofessionally carried out, Invoice of repair done Non-existent
---	---

Paint coat thickness measurement

Side panel - rear right side	856 µm
------------------------------	--------

Order/Scope of Order

An order was placed to prepare a sales report for the described vehicle. This report includes the following:

- Description of key vehicle information
- Documentation of equipment features
(Delivery by third-party service providers)
- Documentation of damage, defects, missing parts
- Documentation of prior damage, unrepaired prior damage, repainting
- A brief visual or functional inspection of the equipment details, if possible.
(Functional testing of driver assistance systems is not included in the scope of services!)
- a photographic documentation of the vehicle

Basis for the order

This product is based on the guidelines for vehicle returns and valuations published by Alphabet Fleet GmbH. The expert makes the specific findings in each individual case objectively, within the framework of the prescribed standards, based on their own expertise.

The vehicle inspection takes place in a fully assembled, unassembled state.

Damage or defects that can only be detected during disassembly/diagnostic work or through further investigation remain within the realm of prognostic risk. An increased risk exists due to concealed defects caused by fraudulent misrepresentation and which were not identifiable by the expert.

Damage or defects resulting from normal use or wear and tear of the vehicle will be accepted in accordance with the applicable standard.

There was no explicit identification or monetary consideration of the expected features within the product.

Features which, in their nature and extent, slightly exceed normal use but do not constitute unacceptable damage, will be documented and indicated as signs of wear, if applicable.

Damage or defects that, according to the applicable standard, can no longer be attributed to normal use or wear and tear are listed under "Value Reducing Factors" in the product description.

Depending on the product specification, a monetary ID can be provided. If this takes place, the costs can be 100% d or pro rata depending on the vehicle's age and mileage.

Previous damages

No apparent prior damage that had been repaired could be found on the vehicle.

Comments

- Für den montierten Radsatz wurde kein Nachweis erbracht.
- Winterradsatz ist kein Bestandteil des Auslieferungsumfangs.



Figure 1: Diagonal front (left)



Figure 2: Diagonal front (right)



Figure 3: Diagonal rear (left)



Figure 4: Diagonal rear (right)



Figure 5: Interior - front



Figure 6: Interior - rear



Figure 7: Instrument cluster



Figure 8: Instrument panel



Figure 9: Interior 360° view



Figure 10: Cargo area

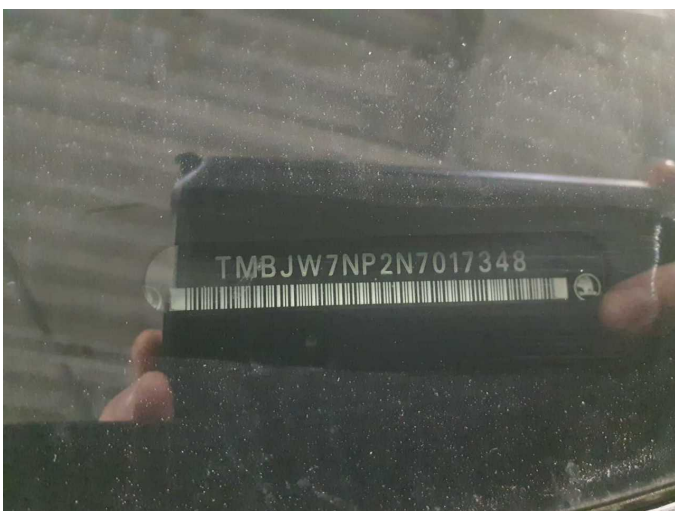


Figure 11: VIN



Figure 12: Mounted tyres



Figure 13: Documents



Figure 14: Additional tyres



Figure 15: Navigation



Figure 16: Misc.

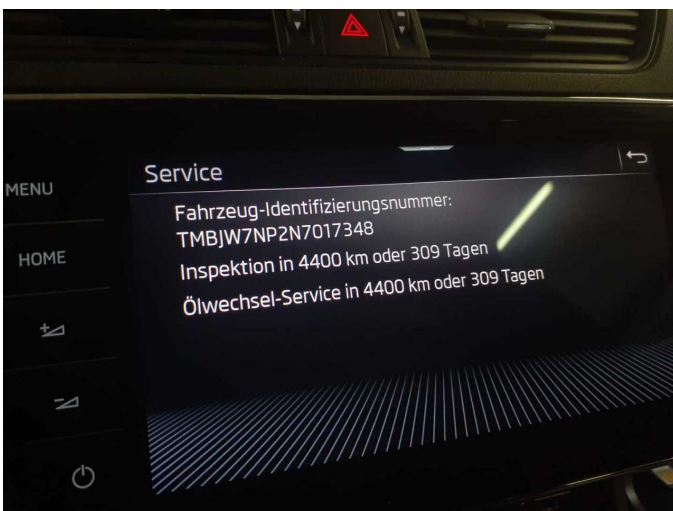


Figure 17: Misc.

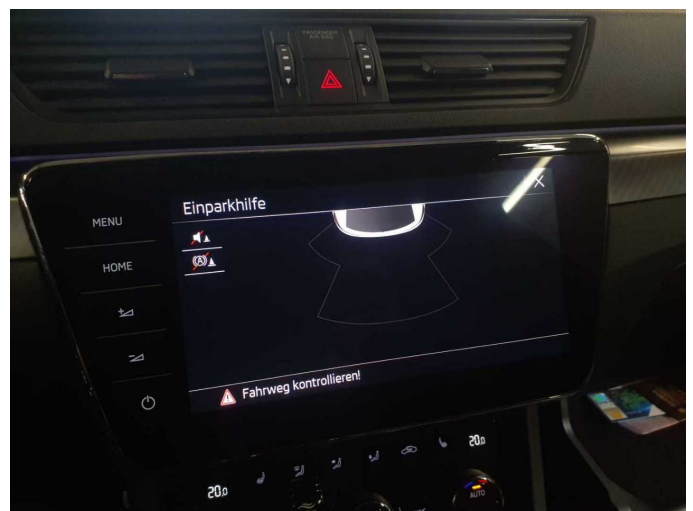


Figure 18: Misc.



Figure 19: Misc.



Figure 20: Misc.

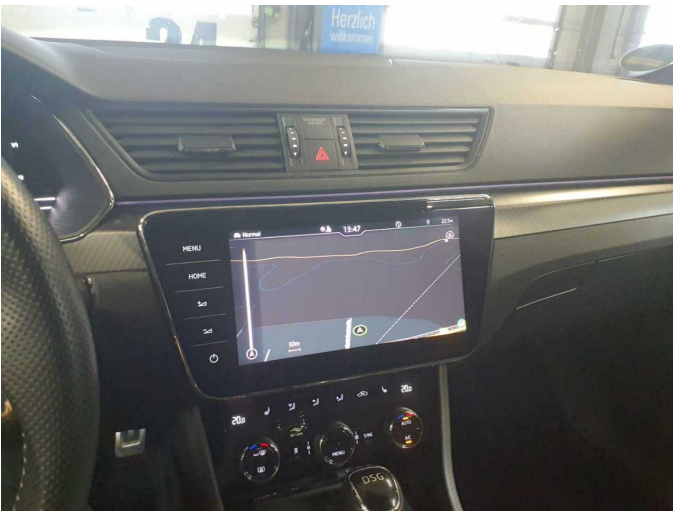


Figure 21: Misc.



Figure 22: Misc.

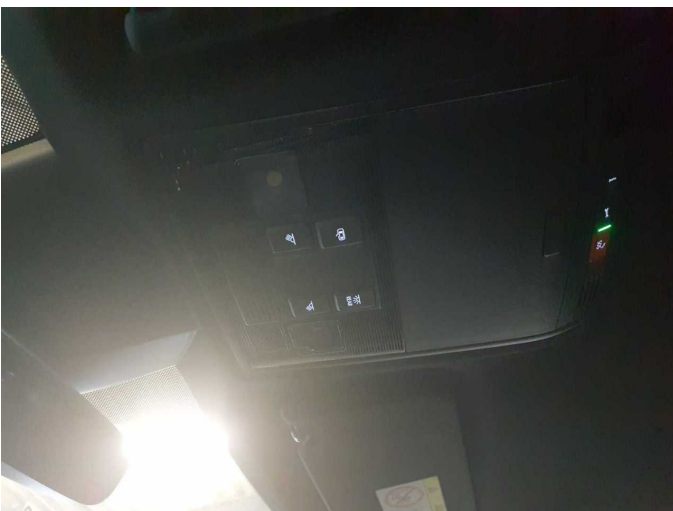


Figure 23: Misc.



Figure 24: Misc.



Figure 25: Misc.



Figure 26: Misc.



Figure 27: Misc.



Figure 28: Misc.



Figure 29: Misc.



Figure 30: Misc.



Figure 31: Misc.



Figure 32: Misc.



Figure 33: Misc.



Figure 34: Misc.

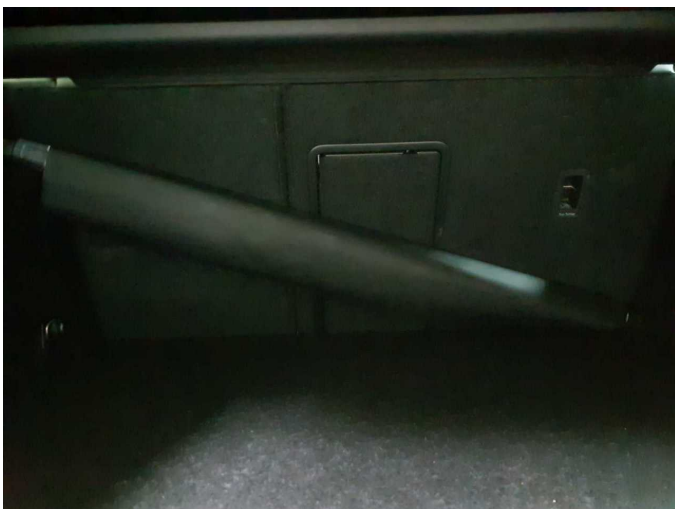


Figure 35: Misc.

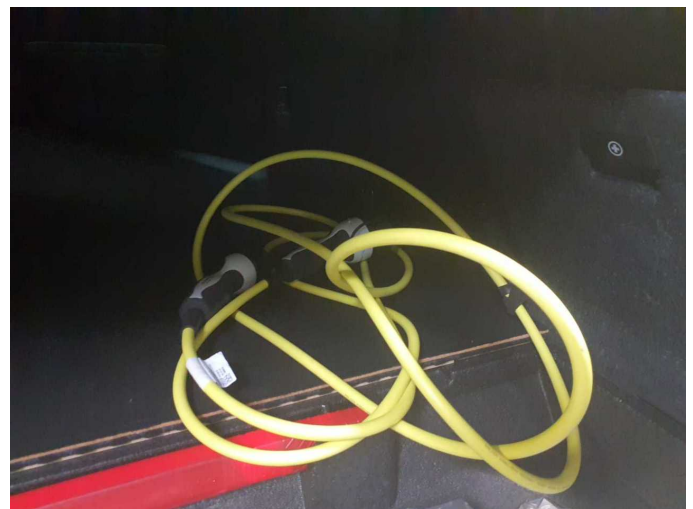


Figure 36: Misc.

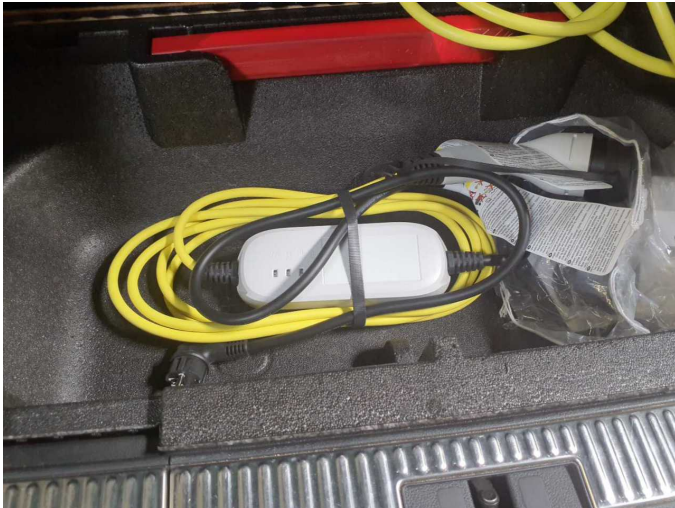


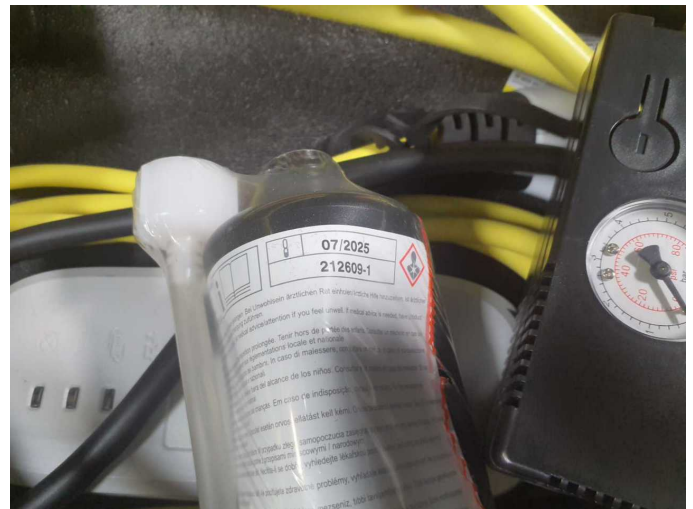
Figure 37: Misc.



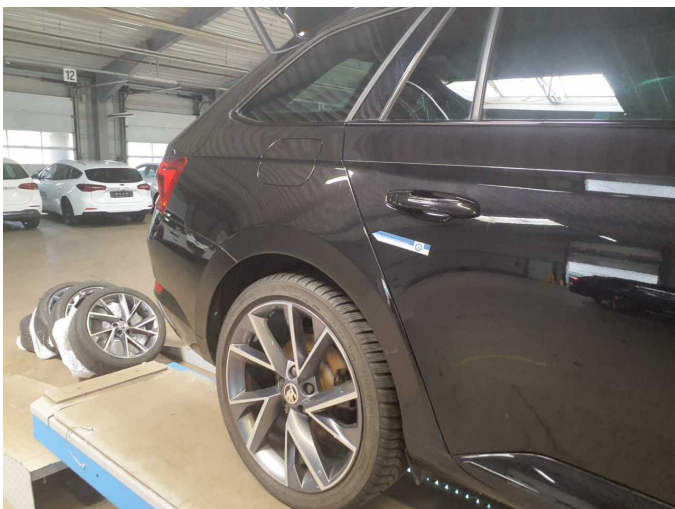
Figure 38: Misc.



Figure 39: Misc.



Damage 1: Equipment: Tirefit filler - Expired - Replace



Damage 2: Side panel - rear right side: Side panel (Welliger Untergrund)
- Unprofessionally repaired - Repair and paint



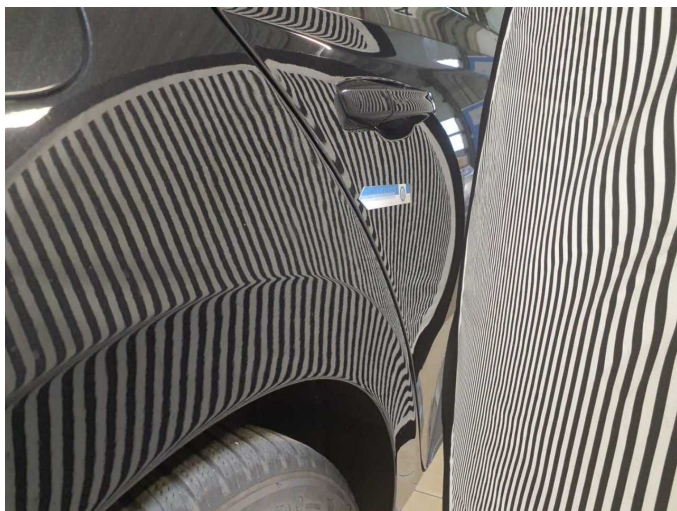
Damage 2: Side panel - rear right side: Side panel (Welliger Untergrund)
- Unprofessionally repaired - Repair and paint



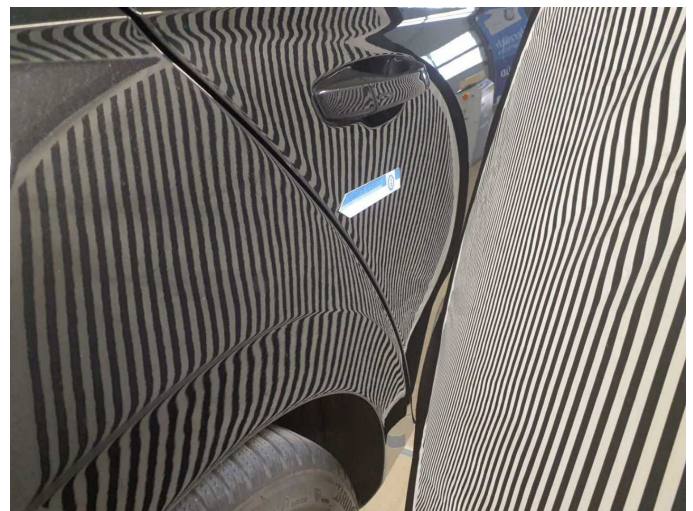
Damage 2: Side panel - rear right side: Side panel (Welliger Untergrund)
- Unprofessionally repaired - Repair and paint



Damage 2: Side panel - rear right side: Side panel (Welliger Untergrund)
- Unprofessionally repaired - Repair and paint



Damage 2: Side panel - rear right side: Side panel (Welliger Untergrund)
- Unprofessionally repaired - Repair and paint



Damage 2: Side panel - rear right side: Side panel (Welliger Untergrund)
- Unprofessionally repaired - Repair and paint



Repainting 1: Side panel - rear right side



Repainting 1: Side panel - rear right side



Wartungshistorie

(gemäß Auftraggeber Informationen)

Fahrgestellnummer: TMBJW7NP2N7017348

Hersteller / Modell: SKODA SKODA Superb Combi 1.4 TSI iV DSG Sportline

Datum	KM-Stand	Beschreibung
02.12.2024	76.103	AU
19.04.2024	58.625	Getriebeöl ern/prüfen; Motoröl b. Wartung; Ölfilter ern; Regelwartungsdienst; Wartung Sonstiges; Zündkerzen ern
05.10.2023	44.095	Bremsflüssigkeit ern; Motoröl b. Wartung; Ölwechsel
13.03.2023	29.926	Regelwartungsdienst
02.12.2022	24.004	Motoröl b. Wartung; Ölwechsel
27.07.2022	14.452	Motoröl b. Wartung; Ölwechsel