

Expertise

Protocol number: 46257214
Order No. / Reference: 26152532
Inspection date: 29 Jun 2026

Manufacturer: Mercedes-Benz

Model: Vito 116 CDI Tourer Lang Aut. SELECT

VIN: W1VVLFEZ8T4546039



Vehicle details

Manufacturer / Type / Model / Equipment

Mercedes-Benz Vito 116 CDI Tourer Lang Aut. SELECT

Vehicle Identification number	W1VVLFEZ8T4546039
Mileage (Read)	31,911 km
First registration	21 Jul 2025
Number of holders	1
Next periodical technical inspection	07/2026 (Report not on hand)

Power / Engine displacement	120 kw / 1,950 ccm
------------------------------------	--------------------

Fuel type / Cylinder	Diesel / 4
-----------------------------	------------

Gearbox / Number of gears	Automatic / 9
----------------------------------	---------------

Type of drive	Rear drive
----------------------	------------

Type of vehicle	Van
------------------------	-----

Colour / colour code	Grafitgrau Dunkel
-----------------------------	-------------------

Doors / Seats	4 / 8
----------------------	-------

Upholstery type	Cloth
------------------------	-------

Colour of upholstery	Black
-----------------------------	-------

Re-import	no
------------------	----

Type of use	rental car
--------------------	------------

readiness to drive	Roadworthy
---------------------------	------------



Vehicle details

Maintenance booklet / proof	digital proof / complete	Next maintenance in	385 Tag(e)
Key is / should be	2 / 2	FZG documents	ZB#2 (B) was available (copy), ZB#1 (S) was not available.
		Letter No.	HN427193
Previous damage / Accident	Detectable	Repainting	None detectable
Inspection conditions	sufficient	Lifting equipment / pit	yes
Test drive	Not performed	Engine function test	Performed
readiness to drive	Roadworthy		
Manufacturer key number/ type code number	2222 / ABB 06762		
Emission standard	EURO6;WLTP;EB;PI/CI;M, N1, N2	fine dust sticker	
Permitted total weight	3,100 kg	Empty weight	

Tyres

Mounted tyres

#	Tyre size	Type of tyre	Manufacturer	Tread depth
1)	225/55 R17 109H	All-season tyres on Light alloy	Goodyear	5mm / 5mm
2)	225/55 R17 109H	All-season tyres on Light alloy	Goodyear	6mm / 6mm

Legend: Tread depth information for the left tire is listed first, for the right tire it is listed second on the axle in the direction of travel.

TÜV SÜD Auto Partner GmbH
Wiesenring 2
04159 Leipzig

Inspection location
ARS Altmann AG Automobillogistik
Lilienthalstraße 2
29693 Hodenhagen



Equipment



Standard equipment

- ABS, ESP, ASR, EBV, BAS (Anti-lock Braking System (ABS) - Electronic Stability Program (ESP) - Traction Control (ASR) - Electronic Brakeforce Distribution (EBV) - Brake Assist (BAS))
- Airbag: Thorax-pelvis-sidebag for driver
- Airbag: Windowbag for driver and front passenger
- ATTENTION ASSIST (ATTENTION ASSIST can assist the driver on long, monotonous journeys by monitoring attention. If signs of fatigue or increasing inattention are detected, it suggests a break.)
- Electrically folding exterior mirrors, left and right
- Battery: fleece battery 12 V / 92 Ah
- Lighting: Lighting in the rear grab handle with reading light
- Brake assist, active
- Brake lights, adaptive
- Front cupholder
- Roof cladding
- Electronic tachometer
- Electrical components for trailer socket (electrical lines for power supply of the trailer - without trailer hitch control unit)
- Chassis: Comfort chassis
- Window in rear door/tailgate (with wiper/washer system)
- Front left window fixed in SW/ cargo area sliding door
- Electric window regulator driver/passenger (with anti-pinch protection, quick lowering and raising)
- Generator management (Generator management helps reduce fuel consumption and CO2 emissions. The generator is switched off and the vehicle's electrical system is powered by the battery when it is sufficiently charged. This relieves the engine of the burden of charging the battery, for example, during acceleration. - When braking and during coasting downhill, the generator is switched on and the vehicle's kinetic energy is recuperated to charge the battery.)
- Interior and ambient lighting (comfort roof control unit, - tailgate approach lighting - exit lights - front footwell lighting - lighting in rear grab handle with reading light)
- Intelligent speed assistant
- Child safety locks on doors in the passenger compartment
- Instrument cluster with color display
- Communication module (LTE) for digital services
- Large fuel tank, approx. 70 liters
- Paint finish: Solid color paint
- Steering wheel adjustable for tilt and height
- Headlight range control
- Multibeam LED with High Beam Assist PLUS
- Navigation: Navigation pre-installation
- Package: BlueEFFICIENCY (Efficiency Package)
- Package: Parking package with reversing camera
- Package: Smartphone Integration Package
- Package: Mirrors (automatically dimming interior mirror - automatically dimming exterior mirror - electrically folding exterior mirrors)
- Radio: Digital Radio DAB
- Screw-in towing eye front/rear
- Passenger side airbag
- Driver's side airbag
- Airbag: Thorax airbag - Pelvis side airbag for front passenger
- Active Lane Keeping Assist
- Increased load capacity to 3,100 kg
- Exit lights
- Electrically adjustable and heated exterior mirrors, left and right
- Outdoor temperature display
- Front footwell lighting
- Hill start assist
- third brake light
- COC documents
- Comfort roof control unit
- Diesel particulate filter and SCR
- Entry grab handle for the cargo area sliding door
- Driving light assistant (automatically switching on driving lights)
- Misfueling protection
- Left/right window in SW/ Cargo area sliding door
- Front right window fixed in SW/ cargo area sliding door
- electric parking brake
- Generator 14 V / 250 A
- Speed limit 210 km/h
- Transmission: 9G-TRONIC
- Seatbelt warning device for front passenger seat
- Seatbelt warning device for driver's seat
- Grab handle for entry of driver and passenger
- Grab handle in the rear
- Lockable glove box
- Boot lid
- HOLD function
- Interior mirror (rearview mirror)
- Interior mirror automatically dimming
- Interior trim, high-end finish
- Passive child detection in the vehicle
- Tempmatic controlled air conditioning
- Comfort closing (comfort opening and closing of windows)
- Headrests (2), front
- chrome-plated radiator grille
- leather steering wheel
- Steering wheel: Multifunction steering wheel
- Mercedes-Benz emergency call system
- Night lighting rear
- Package: Aerodynamics
- Package: Chrome Interior Package (chrome trim: in instrument panel and door trim, air vents, climate control elements, door control panel surround, center console in gloss black)
- Breakdown management
- Upholstery: Caluma fabric, black



- Radio accessories: 2-way speakers front + rear.
- Tires: Tires without specified make
- Tires: Premium protection tires (3 years)
- Tire pressure monitoring (on front and rear axles (wireless))
- Wheels: Premium complete wheel protection (3 years)
- Headlights: halogen technology
- Sliding door: Active stop
- Crosswind Assist
- Seats: 3-seat rail system (with quick-release mechanism)
- Seats: Passenger compartment 1st row, 3-seater bench / Comfort (outer seat foldable)
- Seats: Comfort passenger seat
- Seats: Passenger seat cushion depth adjustment
- Sun visor, driver/passenger side, illuminated mirror
- 12V socket
- Cruise control
- Carpet in the rear
- Ambient lighting tailgate
- Updates to the intelligent speed assistant
- Pre-installation for Remote Services Plus
- Warning triangle
- Immobiliser
- Central locking with radio remote control
- Car registration

Extra equipment

- Towing capacity 2500 kg
- Tinted rear windows, black glass
- Semi-automatic air conditioning, TEMPATIC in the rear
- Paint finish: Metallic
- Navigation
- Package: Acoustic package for noise reduction
- Tires: All-season tires
- Wheels: Alloy wheels 7 J x 17, 5-spoke design
- Electric suction fan, power level 5
- Sliding door on the left (cargo area)
- Seat: Lumbar support, passenger seat
- Seats: 4-seat rail system (with quick-release mechanism)
- 12V socket for rear seat rows, right and left
- Traffic Sign Assistant

- Radio: MBUX multimedia system (high-resolution 10.25-inch touchscreen, Bluetooth interface with hands-free function, USB-C port, digital radio (DAB), setup of up to 7 profiles via Mercedes me, voice assistant with seat-specific voice recognition, technical requirements for over-the-air updates, satellite view, social navigation, dynamic offboard routing* (additional route alternatives), online music)
- Sliding door on the right, cargo/passenger compartment
- electromechanical power steering
- Seats: Passenger compartment armrest (per row)
- Seats: Passenger compartment 2nd row, 3-seater bench / Comfort (outer seat foldable)
- Seats: Comfort driver's seat
- Seats: Driver's seat cushion depth adjustment
- Start-stop function
- Bumpers painted in body color
- Carpet in the front of the vehicle interior
- Blind Spot Assist
- Ambient lighting in the exterior mirrors
- First aid kit
- Warm air duct to the passenger compartment
- ASSYST maintenance interval indicator
- Heat-insulating glass
- Auxiliary heater, electric

- Towbar (detachable ball head)
- Double cup holder in the center of the cockpit
- THERMOTRONIC automatic climate control
- Center console with storage compartment
- Navigation accessories: Live Traffic Information
- Package: Winter Package (heated windscreen - heated seats for driver and front passenger - pockets on driver and front passenger seatbacks - heated multifunction steering wheel)
- Key: Multi-button radio remote control
- Seat: Lumbar support driver's seat
- Seats: Seat attachment opposite 1st rear seat rails
- 12V socket in the trunk/cargo area

Brief expert findings

Documents submitted	At the time of the inspection, the vehicle registration certificate Part 2 (title) was available, but the vehicle registration certificate Part 1 (document) was not. (Copy)
VIN comparison	The vehicle identification number (VIN) was read from the vehicle and its conformity with the submitted documents was confirmed by the undersigned during the inspection.
Inspection	The inspection conditions were sufficient for the assessment of the vehicle. Lifting equipment and/or a pit were available for examining the vehicle.
Test drive	No test drive/shunting maneuver was carried out during the inspection of the vehicle.
Engine function test	An engine test run was performed.
readiness to drive	The vehicle was roadworthy at the time of inspection.



Value reducing factors

No.	Component group	Description
1	Sliding door, right	Door seal - Sub-function - Replace
2	Boot lid / rear door	Boot lid (2) - dent(s) - Smooth repair work
3	Wheel / tyres	Alloy rim - front right side - Scratch(es) - Replace
4	Rear bumper	Rear bumper - Scratch(es) - Paint
5	Sliding door, right	Sliding door - Dent / paintcoat damage - Repair and paint

Wear and tear

No.	Component group	Description
1	Bonnet	Bonnet - Stone chips - No deduction
2	Vehicle glazing	Windscreen - Stone chips - No deduction

The vehicle shows signs of wear and tear commensurate with its age and use.

Accident damages

No.	Accident
1	Side right

Paint coat thickness measurement

Roof	115 µm	Roof rail - left side	100 µm
Roof rail - right side	102 µm	Boot lid / rear door	92 µm
Mudguard - left side	106 µm	Mudguard - right side	108 µm
Bonnet	120 µm	Side panel - rear left side	99 µm
Side panel - rear right side	100 µm	Door - rear left side	99 µm
Door - rear right side	99 µm	Door - front left side	100 µm
Door - front right side	99 µm		

Order/Scope of Order

An order was placed to prepare a sales report for the described vehicle. This report includes the following:

- Description of key vehicle information
- Documentation of equipment features
(Delivery by third-party service providers)
- Documentation of damage, defects, missing parts
- Documentation of prior damage, unrepaired prior damage, repainting
- A brief visual or functional inspection of the equipment details, if possible.
(Functional testing of driver assistance systems is not included in the scope of services!)
- a photographic documentation of the vehicle



Basis for the order

This product is based on the guidelines for vehicle returns and valuations of light commercial vehicles published by Alphabet Fleet Management GmbH. The expert makes the specific findings in each individual case objectively, within the framework of the prescribed standards, based on their own expertise.

The vehicle inspection takes place in a fully assembled, unassembled state.

Damage or defects that can only be detected during disassembly/diagnostic work or through further investigation remain within the realm of prognostic risk. An increased risk exists due to concealed defects caused by fraudulent misrepresentation and which were not identifiable by the expert.

Damage or defects resulting from normal use or wear and tear of the vehicle will be accepted in accordance with the applicable standard.

There was no explicit identification or monetary consideration of the expected features within the product.

Features which, in their nature and extent, slightly exceed normal use but do not constitute unacceptable damage, will be documented and indicated as signs of wear, if applicable.

Damage or defects that, according to the applicable standard, can no longer be attributed to normal use or wear and tear are listed under "Value Reducing Factors" in the product description.

Depending on the product specification, a monetary ID can be provided. If this takes place, the costs can be 100% d or pro rata depending on the vehicle's age and mileage.

Previous damages

Non-repaired previous damages were found at the vehicle. The necessary repair costs are listed in the expert report or if necessary, are listed in detail in a separately enclosed repair cost calculation.

Comments

- Ex STAR CAR Mietfahrzeug.



Figure 1: Diagonal front (left)



Figure 2: Diagonal front (right)



Figure 3: Diagonal rear (left)



Figure 4: Diagonal rear (right)



Figure 5: Interior - front



Figure 6: Interior - rear



Figure 7: Instrument cluster



Figure 8: Instrument panel



Figure 9: Interior 360° view



Figure 10: Cargo area



Figure 11: VIN



Figure 12: Mounted tyres



Figure 13: Mounted tyres



Figure 14: Documents



Figure 15: Misc.



Figure 16: Misc.



Figure 17: Misc.



Figure 18: Misc.



Figure 19: Misc.



Figure 20: Misc.



Figure 21: Misc.



Figure 22: Misc.

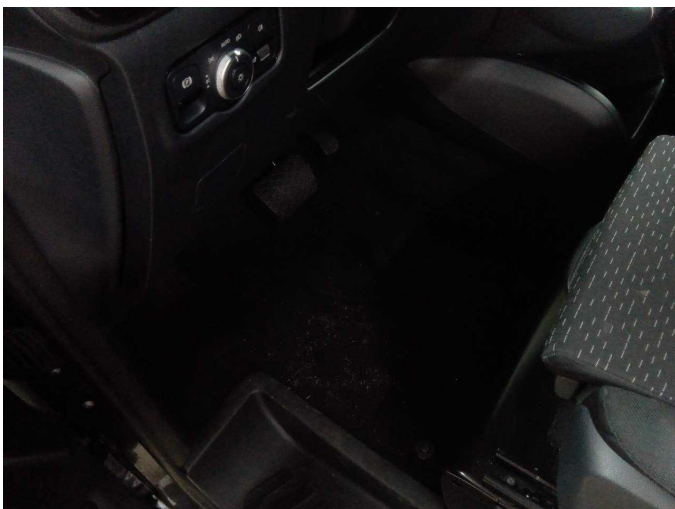


Figure 23: Misc.

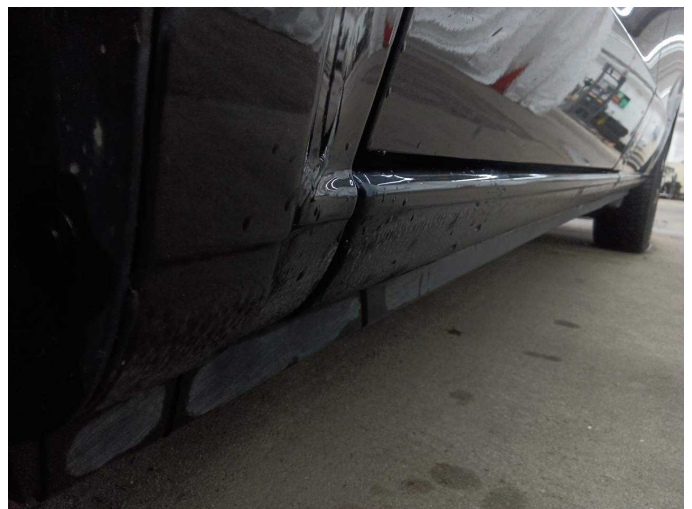


Figure 24: Misc.



Figure 25: Misc.



Figure 26: Misc.

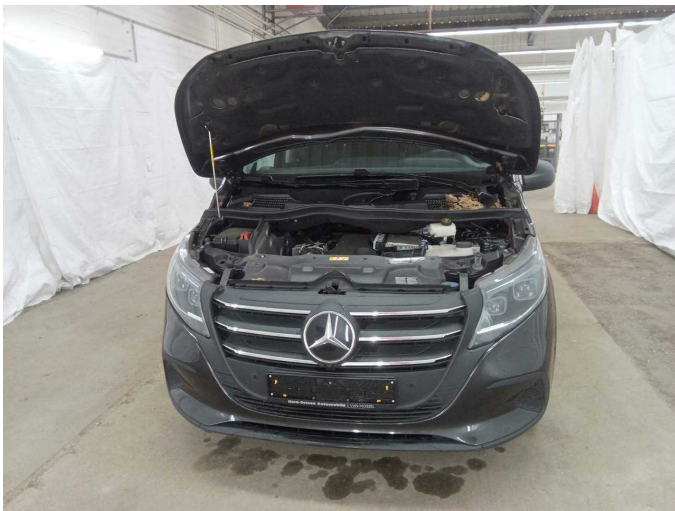


Figure 27: Misc.



Figure 28: Misc.



Figure 29: Misc.



Figure 30: Misc.



Figure 31: Misc.



Figure 32: Misc.



Figure 33: Misc.



Figure 34: Misc.

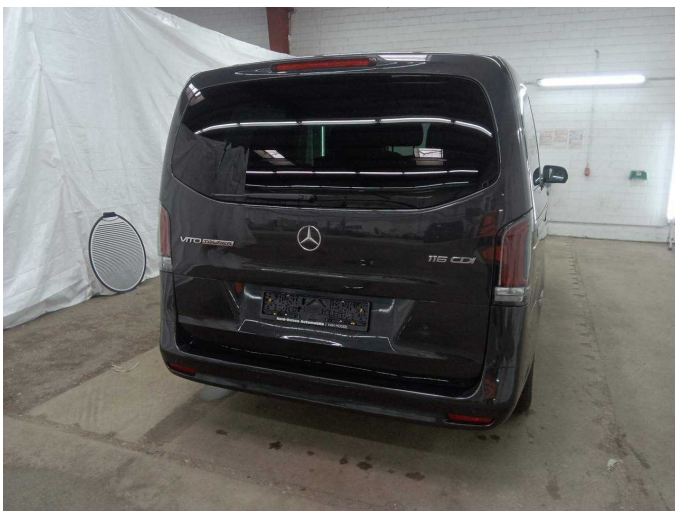


Figure 35: Misc.



Figure 36: Misc.



Figure 37: Misc.



Figure 38: Misc.

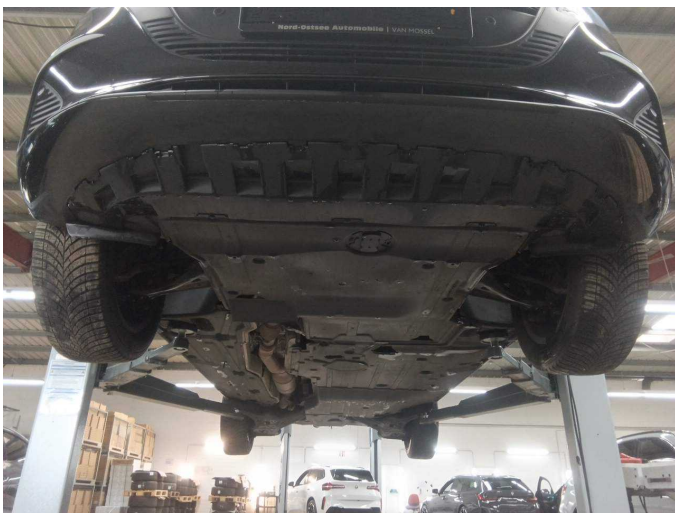


Figure 39: Misc.



Figure 40: Misc.



Damage 1: Sliding door, right: Door seal - Sub-function - Replace



Damage 1: Sliding door, right: Door seal - Sub-function - Replace



Damage 2: Boot lid / rear door: Boot lid (2) - dent(s) - Smooth repair work



Damage 2: Boot lid / rear door: Boot lid (2) - dent(s) - Smooth repair work



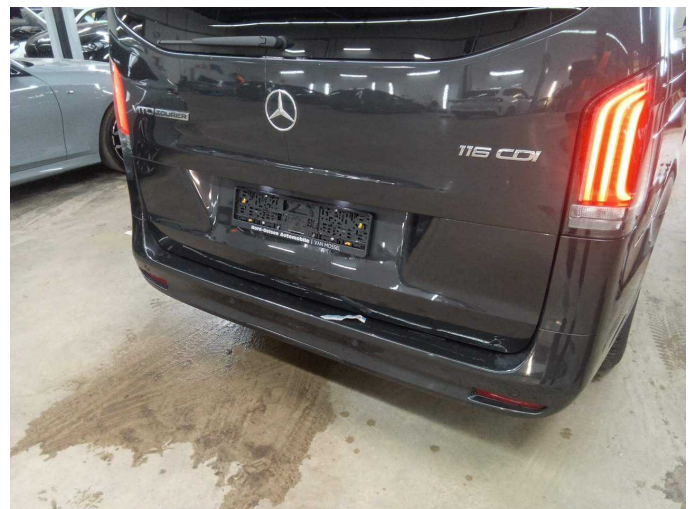
Damage 3: Wheel / tyres: Alloy rim - front right side - Scratch(es) - Replace



Damage 3: Wheel / tyres: Alloy rim - front right side - Scratch(es) - Replace



Damage 3: Wheel / tyres: Alloy rim - front right side - Scratch(es) - Replace



Damage 4: Rear bumper: Rear bumper - Scratch(es) - Paint



Damage 4: Rear bumper: Rear bumper - Scratch(es) - Paint



Damage 4: Rear bumper: Rear bumper - Scratch(es) - Paint



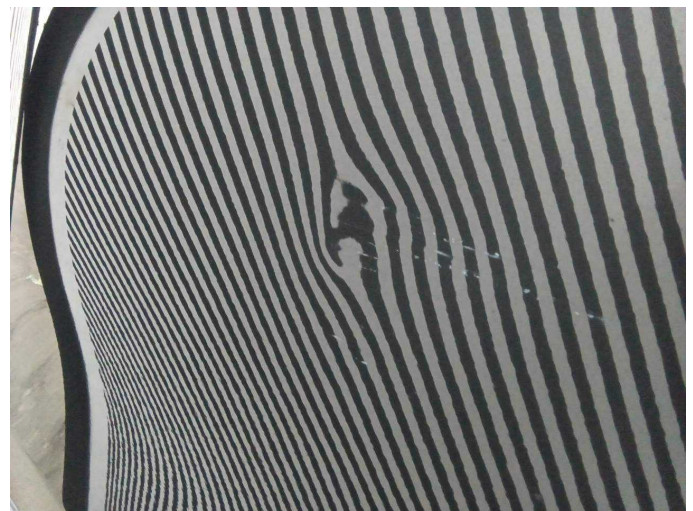
Damage 4: Rear bumper: Rear bumper - Scratch(es) - Paint



Damage 4: Rear bumper: Rear bumper - Scratch(es) - Paint



Damage 5: Sliding door, right: Sliding door - Dent / paintcoat damage - Repair and paint



Damage 5: Sliding door, right: Sliding door - Dent / paintcoat damage - Repair and paint



Accident 1: Side right



Accident 1: Side right



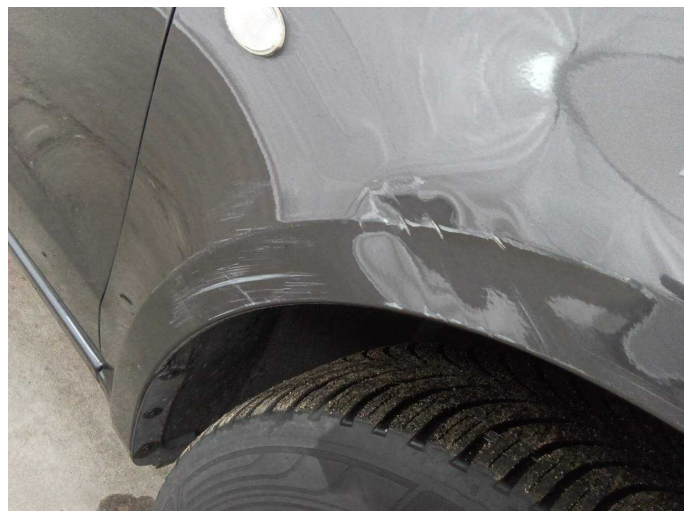
Accident 1: Side right



Accident 1: Side right



Accident 1: Side right



Accident 1: Side right



Accident 1: Side right