

Expertise

Protocol number: 46198435
Order No. / Reference: 26626224
Inspection date: 29 Jun 2026

Manufacturer: Volkswagen

Model: Touran 2.0 TDI SCR Comfortline

VIN: WVGZZZ1T2PW018612



Vehicle details

Manufacturer / Type / Model / Equipment

Volkswagen Touran 2.0 TDI SCR Comfortline

Vehicle Identification number WVGZZZ1T2PW018612

Mileage (Read) 101,050 km

First registration 18 Apr 2023

Number of holders 1

Power / Engine displacement 90 kw / 1,968 ccm

Fuel type / Cylinder Diesel / 4

Gearbox / Number of gears Manual / 6

Type of drive Front drive

Type of vehicle Station wagon

Colour / colour code Deep Black Perleffekt (C9X)

Doors / Seats 5 / 5

Upholstery type Alcantara / Leather

Colour of upholstery Black-Anthracite

Vehicle with smoke odor no



Vehicle details			
Maintenance booklet / proof	digital proof / complete	Next maintenance in	11,700 km
Last service on / at	02/2026 at 89,512 km		
Key is / should be	2 / 2	FZG documents	ZB#2 (B) was available (copy), ZB#1 (S) was not available.
		Letter No.	GS504011
Previous damage / Accident	None detectable	Repainting	None detectable
Inspection conditions	sufficient	Lifting equipment / pit	yes
Test drive	Not performed	Engine function test	Performed
Manufacturer key number/ type code number	0603 / CNT 00203		
Emission standard	EURO6;WLTP;AP;PI/CI; M, N1 I	fine dust sticker	
Permitted total weight	2,190 kg	Empty weight	

Tyres

Mounted tyres				
#	Tyre size	Type of tyre	Manufacturer	Tread depth
1)	205/60 R16 96V	Summer tyres on Light alloy	Pirelli	6mm / 6mm
2)	205/60 R16 96V	Summer tyres on Light alloy	Pirelli	7mm / 7mm
Additional tyres				
#	Tyre size	Type of tyre	Manufacturer	Tread depth
1)	205/60 R16 96H	Winter tyres on Light alloy	Dunlop	7mm / 7mm
2)	205/60 R16 96H	Winter tyres on Light alloy	Dunlop	7mm / 7mm
Replacement				
Typ	Tyre size	Type of tyre	Manufacturer	Tread depth
	Tirefit	Expiration date 01/2027		

Legend: Tread depth information for the left tire is listed first, for the right tire it is listed second on the axle in the direction of travel.

TÜV SÜD Auto Partner GmbH
Wiesenring 2
04159 Leipzig

Inspection location
Mosolf SE & Co.KG
Faberweg 25
73230 Kirchheim unter Teck



Equipment



Standard equipment

- Storage compartment with lid on the instrument panel
- Airbag for driver and front passenger (with front passenger airbag deactivation, including driver's side knee airbag)
- Adaptive Cruise Control (ACC) with speed limiter
- Exterior mirror housings and door handles in body color
- third brake light
- Headliner in Storm Grey
- Decorative inserts "New Brushed Design" (for instrument panel and front door trim)
- Digital Cockpit, multi-colored (various info profiles selectable)
- Electronic parking brake including auto-hold function
- Electronic Stability Program (ESP) with counter-steering support (Incl. ABS with brake assist, ASR (traction slip control), EDS (electronic differential lock), MSR (engine drag torque control) and trailer stabilization)
- Pedestrian and cyclist detection as well as active front hood
- Luggage compartment cover (with comfort opening, extendable, removable and stowable)
- Luggage compartment floor height adjustable (with fixing element)
- Glove compartment with cooling option
- Rear window wiper with intermittent function
- Interior mirror automatically dimming
- ISOFIX mounting points on rear seats (device for attaching child seats to the rear seats)
- Front headrests (safety-optimized, longitudinally and height-adjustable)
- Steering wheel: Multifunction steering wheel in leather
- Illuminated makeup mirrors in the sun visors
- Multifunctional camera
- Fatigue detection
- Emergency braking assistant "Front Assist" (for automatic distance control ACC up to 210 km/h)
- Upholstery in fabric
- Proactive occupant protection system in conjunction with "Front Assist" and "Side Assist"
- Radio accessories: Digital radio reception DAB+
- Wheels: Light alloy (4) "Karlstad" 6.5 J x 16 (tires 205/60 R 16)
- Gearshift knob in leather
- Keyless start system without safe locking
- Electromechanical power steering (speed-dependent control)
- Seats: 3 individual seats in the 2nd row (longitudinal adjustment, backrest tilt adjustment, armrest and "EasyFold" folding function)
- Seats: Comfort seats in the front
- Seats: Lumbar support in the front
- Lane keeping assistant "Lane Assist"
- Start-stop system (with brake energy recuperation)
- 12V power outlet on the rear center console (and in the luggage compartment)
- Bumpers in body color
- Telephone interface
- Storage compartments in the overhead console
- Airbag, head airbag system for front and rear passengers (including front side airbags)
- Electrically folding exterior mirrors (dimming on the driver's side, ambient lighting and passenger-side mirror lowering)
- black roof rails
- Decorative inlays "Piano Black" (for center console)
- Diesel particulate filter
- Tachometer
- Parking aid (acoustic warning signals for obstacles in the front and rear area)
- Automatic headlight control with daytime running lights ("Leaving home" function and manual "Coming home" function)
- Windscreen made of laminated safety glass, heat and sound insulating
- Luggage management package (with luggage net that can be fixed to rails)
- Additional luggage compartment lighting (removable and usable as a flashlight)
- Transmission: 6-speed manual transmission
- Rear window heated
- Interior lights with delayed shut-off and dimming function, 2 reading lights front and rear
- Air conditioning (with active combination filter)
- Headrests (3) in the 2nd row of seats (height adjustable)
- Black radiator grille with chrome strips on the slats
- Paint finish: Solid
- Headlight range control
- Front center armrest (height and length adjustable - with removable storage box - 2 rear air vents)
- Non-smoking version (storage compartment and 12V socket at the front)
- Emergency call service (no registration required, service is activated upon delivery)
- Radio "Composition"
- Radio accessories: 8 speakers
- Rain sensor
- Wheels: Tire pressure monitoring system
- Wheels: Tire Mobility Set (12-volt compressor and tire sealant)
- Drawers under the front seats
- Seat belts: 3 three-point automatic seat belts in the rear (and seat belt tensioners in the rear)
- Seats: Front passenger seat backrest folds down completely (with table and pass-through function)
- Seats: Folding tables on the backs of the front seats (tilt adjustable)
- Seats: Front seats are height-adjustable



- Textile floor mats (front and rear)
- USB-C interface (charging power up to 45 W)
- First aid kit, warning triangle and high-visibility vest
- Prepared for "We Connect" and "We Connect Plus" (online information is transmitted directly to the car (e.g. navigation with point-of-interest search, online traffic information, parking information, etc.))
- Central locking without safe locking, with remote control and 2 remote folding keys

- Lane change assistant "Side Assist" and parking assistant (warns the driver of vehicles that could pose a danger during lane changes by means of visual signals in the respective exterior mirror - monitors the area behind and beside the vehicle when reversing out of a parking space - issues visual and acoustic warning signals when a vehicle is detected crossing the parking space path - can initiate emergency braking to reduce the severity of a collision or to prevent a collision altogether)
- Warning tone and light for unfastened front seat belts (warning light for unfastened rear seat belts)
- Electronic immobilizer
- Green heat-insulating glazing (sides and rear)
- Black trim strips on the side windows

Extra equipment

- Front USB-C ports (2) (2 USB-C charging ports on the rear center console; charging power up to 45 W)
- High beam assistant "Light Assist"
- Mesh partition
- Paint finish: Pearl effect
- Rear View reversing camera (displays the rear of the vehicle in real time on the radio/navigation system display)
- Traffic sign recognition
- "Discover Media" navigation system including "Streaming & Internet" (radio)

- Air conditioning system "Air Care Climatronic" (with active combination filter, rear controls and 3-zone temperature control)
- Seats: ergoActive seat with 14-way adjustment and massage function on the driver's side (lumbar support in the front, electrically adjustable on the driver's side, massage function on the driver's side - drawer under the right front seat - seat center panels in microfleece "ArtVelours" - top comfort seats in the front - heated front seats - height-adjustable front seats, ergoActive seat on the driver's side)

Brief expert findings

Documents submitted	At the time of the inspection, the vehicle registration certificate Part 2 (title) was available, but the vehicle registration certificate Part 1 (document) was not. (Copy)
VIN comparison	The vehicle identification number (VIN) was read from the vehicle and its conformity with the submitted documents was confirmed by the undersigned during the inspection.
Inspection	The inspection conditions were sufficient for the assessment of the vehicle. Lifting equipment and/or a pit were available for examining the vehicle.
Test drive	No test drive/shunting maneuver was carried out during the inspection of the vehicle.
Engine function test	An engine test run was performed.

Value reducing factors

No.	Component group	Description
1	Wheel / tyres	Alloy rim - front right side - Scratch(es) - Loss in value
2	Body	Body - Glued / labelled - De-glue / neutralise
3	Front bumper	Air-inlet grille - Broken / torn - Replace
4	Rear bumper	Rear bumper - Scratch(es) - Paint



Wear and tear

No.	Component group	Description
1	Interior	Interior - Scratch(es) - No deduction
2	Bonnet	Bonnet - Stone chips - No deduction
3	Vehicle glazing	Windscreen - Stone chips - No deduction
4	Door - front left side	Door edge - Scratch(es) - No deduction
5	Door - front right side	Door - dent(s) - No deduction
6	Front bumper	Front bumper - Scratch(es) - No deduction

The vehicle shows signs of wear and tear commensurate with its age and use.

Order/Scope of Order

An order was placed to prepare a sales report for the described vehicle. This report includes the following:

- Description of key vehicle information
- Documentation of equipment features
(Delivery by third-party service providers)
- Documentation of damage, defects, missing parts
- Documentation of prior damage, unrepaired prior damage, repainting
- A brief visual or functional inspection of the equipment details, if possible.
(Functional testing of driver assistance systems is not included in the scope of services!)
- a photographic documentation of the vehicle

Basis for the order

This product is based on the guidelines for vehicle returns and valuations published by Alphabet Fleet GmbH. The expert makes the specific findings in each individual case objectively, within the framework of the prescribed standards, based on their own expertise.

The vehicle inspection takes place in a fully assembled, unassembled state.

Damage or defects that can only be detected during disassembly/diagnostic work or through further investigation remain within the realm of prognostic risk. An increased risk exists due to concealed defects caused by fraudulent misrepresentation and which were not identifiable by the expert.

Damage or defects resulting from normal use or wear and tear of the vehicle will be accepted in accordance with the applicable standard.

There was no explicit identification or monetary consideration of the expected features within the product.

Features which, in their nature and extent, slightly exceed normal use but do not constitute unacceptable damage, will be documented and indicated as signs of wear, if applicable.

Damage or defects that, according to the applicable standard, can no longer be attributed to normal use or wear and tear are listed under "Value Reducing Factors" in the product description.

Depending on the product specification, a monetary ID can be provided. If this takes place, the costs can be 100% or pro rata depending on the vehicle's age and mileage.

Previous damages

No apparent prior damage that had been repaired could be found on the vehicle.

Comments

Winter - Radsatz ist kein Bestandteil des Lieferumfangs.

Das Fahrzeug weist der Laufzeit entsprechende Gebrauchsspuren auf.



Figure 1: Diagonal front (left)



Figure 2: Diagonal front (right)



Figure 3: Diagonal rear (left)



Figure 4: Diagonal rear (right)

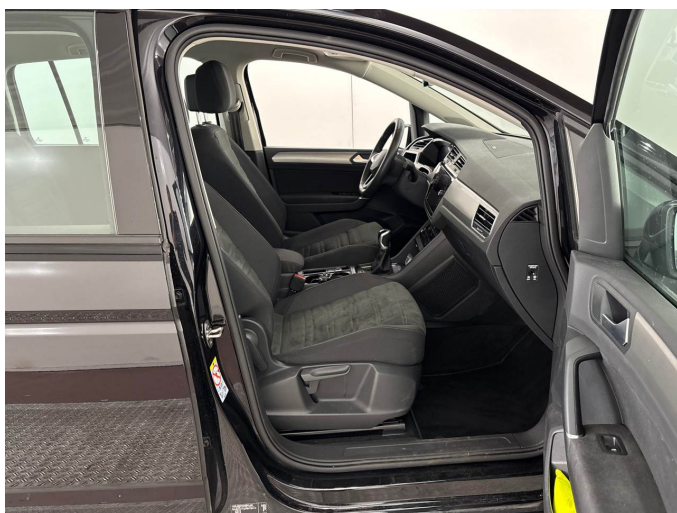


Figure 5: Interior - front



Figure 6: Interior - rear



Figure 7: Instrument cluster



Figure 8: Instrument panel



Figure 9: Interior 360° view



Figure 10: Cargo area

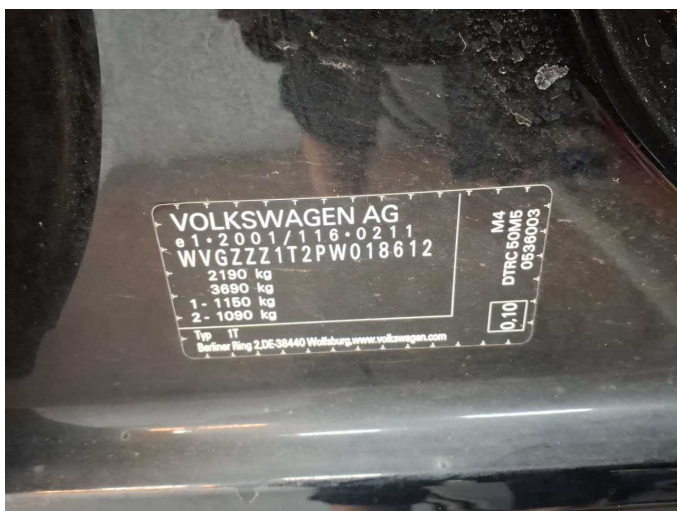


Figure 11: VIN

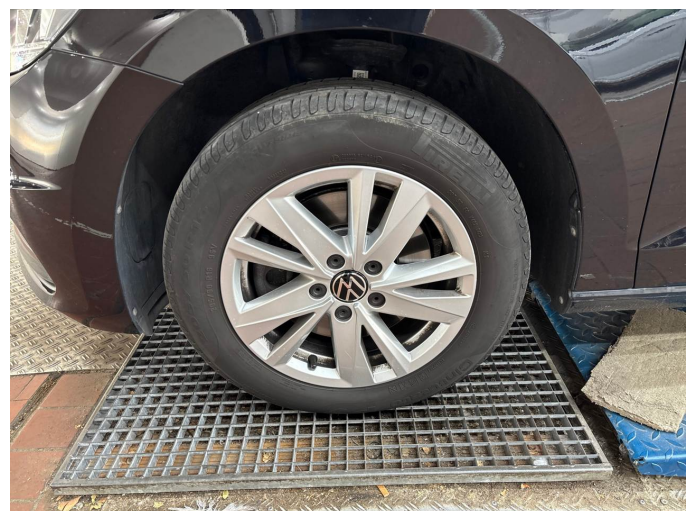


Figure 12: Mounted tyres



Figure 13: Documents

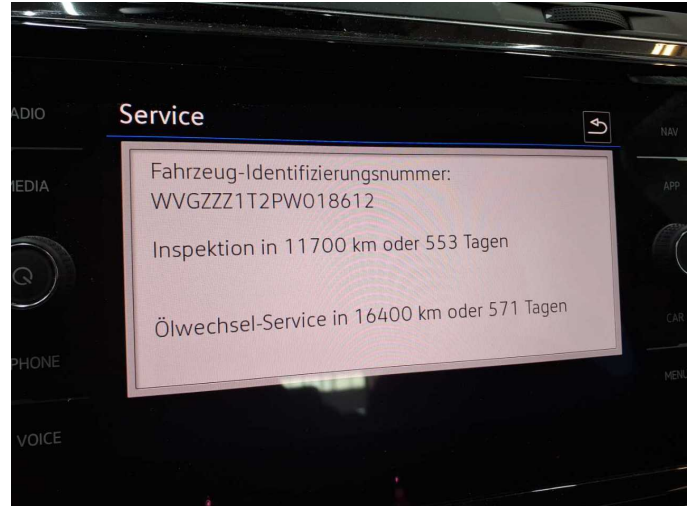


Figure 14: Documents



Figure 15: Additional tyres



Figure 16: Navigation



Figure 17: Misc.



Figure 18: Misc.



Figure 19: Misc.



Figure 20: Misc.



Figure 21: Misc.

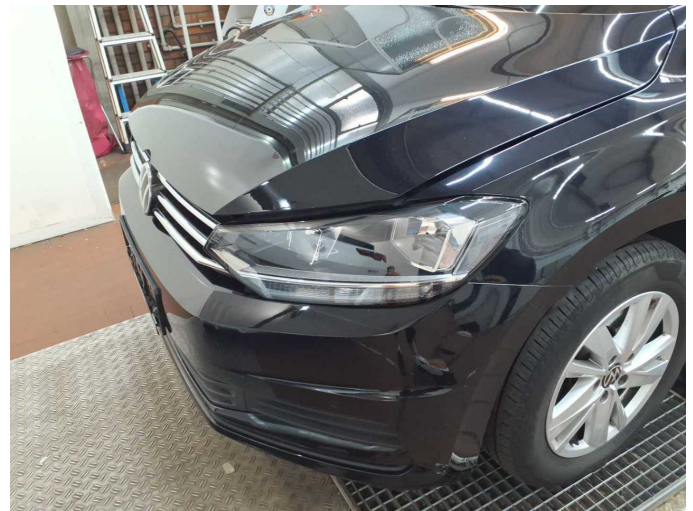


Figure 22: Misc.

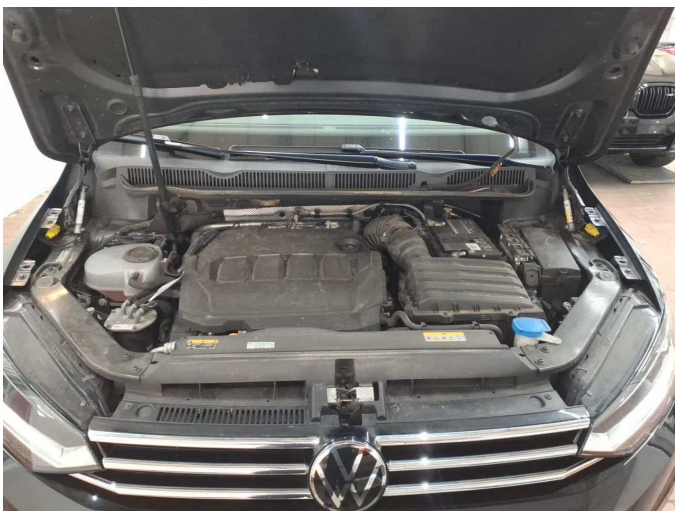


Figure 23: Misc.



Figure 24: Misc.



Figure 25: Misc.



Figure 26: Misc.

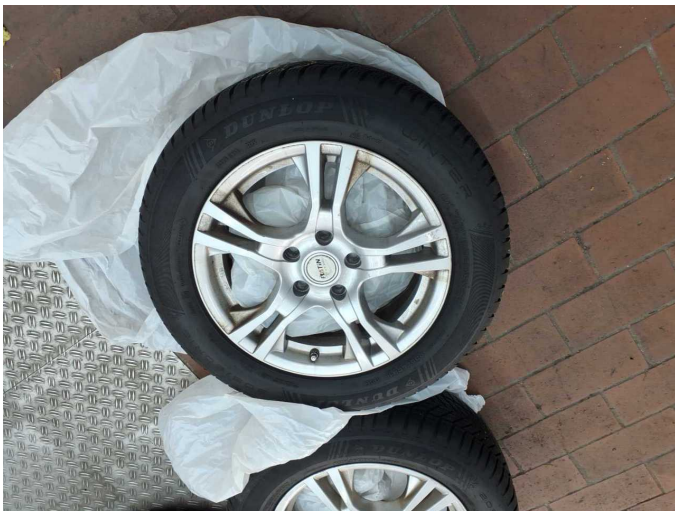


Figure 27: Misc.



Figure 28: Misc.

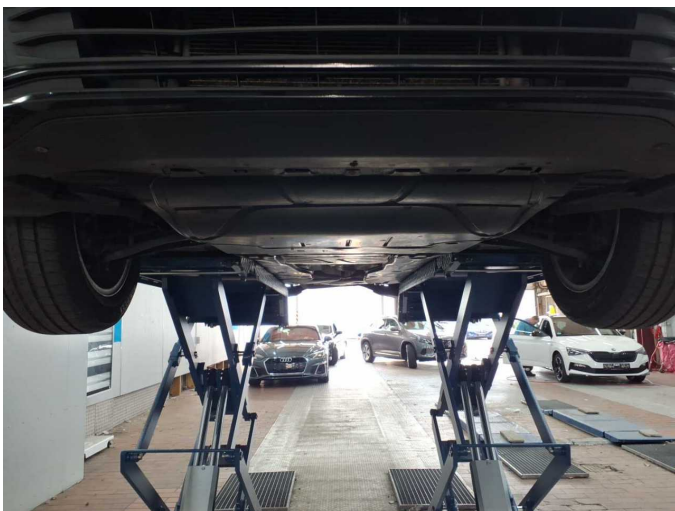
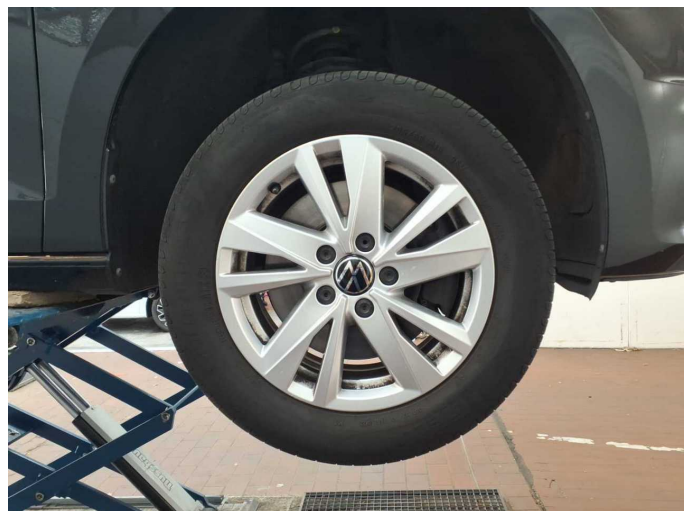


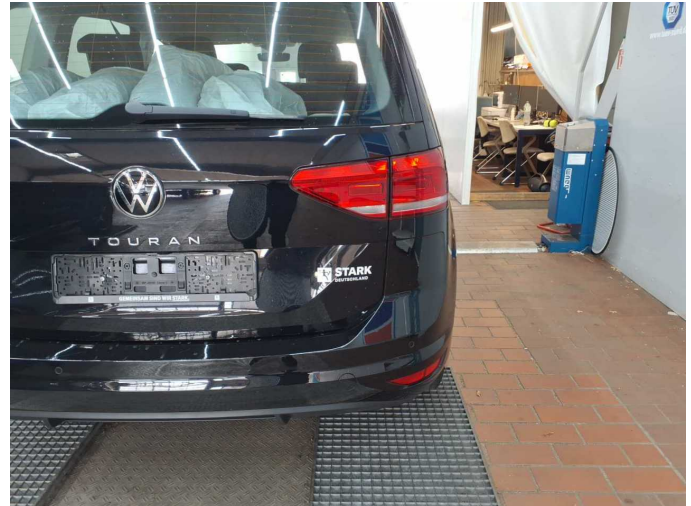
Figure 29: Misc.



Damage 1: Wheel / tyres: Alloy rim - front right side - Scratch(es) - Loss in value



Damage 1: Wheel / tyres: Alloy rim - front right side - Scratch(es) - Loss in value



Damage 2: Body: Body - Glued / labelled - De-glue / neutralise



Damage 2: Body: Body - Glued / labelled - De-glue / neutralise



Damage 2: Body: Body - Glued / labelled - De-glue / neutralise



Damage 2: Body: Body - Glued / labelled - De-glue / neutralise



Damage 3: Front bumper: Air-inlet grille - Broken / torn - Replace



Damage 3: Front bumper: Air-inlet grille - Broken / torn - Replace



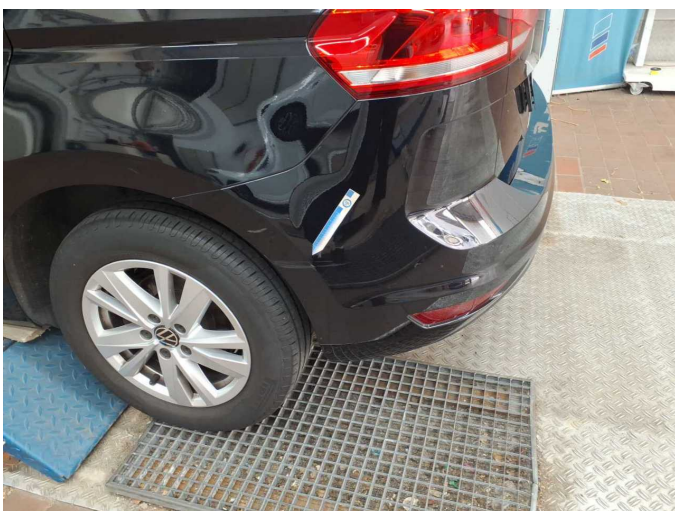
Damage 4: Rear bumper: Rear bumper - Scratch(es) - Paint



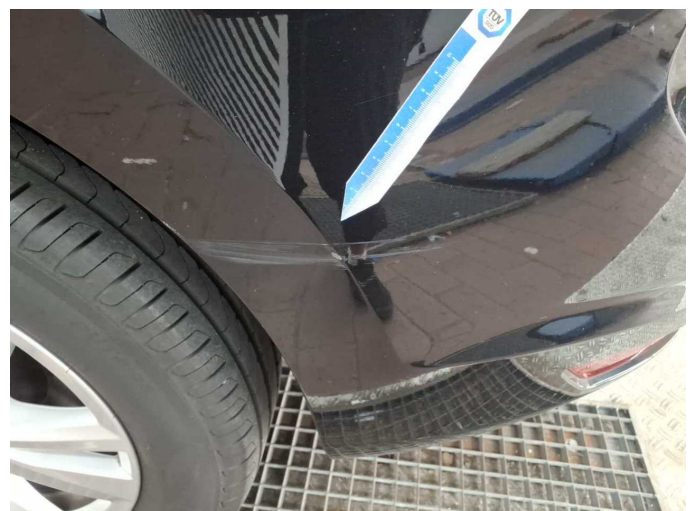
Damage 4: Rear bumper: Rear bumper - Scratch(es) - Paint



Damage 4: Rear bumper: Rear bumper - Scratch(es) - Paint



Damage 4: Rear bumper: Rear bumper - Scratch(es) - Paint



Damage 4: Rear bumper: Rear bumper - Scratch(es) - Paint



Wartungshistorie

(gemäß Auftraggeber Informationen)

Fahrgestellnummer: WVGZZZ1T2PW018612

Hersteller / Modell: VOLKSWAGEN VOLKSWAGEN Touran 2.0 TDI SCR Comfortline

Datum	KM-Stand	Beschreibung
08.04.2026	94.434	AU
13.02.2026	89.512	Bremse Sonstiges; Bremsklötze vorne; Bremsscheiben vorne; Kraftstofffilter ern; Luffiltereinsatz ern; Motoröl b. Wartung; Ölfilter ern; Ölwechsel; Systemtest/Eigendiagnose; Wartung Sonstiges
27.11.2025	82.754	Bremsflüssigkeit; Bremsflüssigkeit ern; Regelwartungsdienst; Wartung Sonstiges
17.12.2024	53.434	Motoröl b. Wartung; Ölfilter ern; Regelwartungsdienst; Wartung Sonstiges
08.03.2024	26.501	Motoröl b. Wartung; Ölfilter ern; Regelwartungsdienst; Wartung Sonstiges