

Expertise

Protocol number: 45769797
Order No. / Reference: 26389835
Inspection date: 2 Jun 2026

Manufacturer: Seat

Model: Leon Sportstourer 2.0 TDI DSG FR

VIN: VSSZZZKLZNR034034



Vehicle details

Manufacturer / Type / Model / Equipment

Seat Leon Sportstourer 2.0 TDI DSG FR

Vehicle Identification number VSSZZZKLZNR034034

Mileage (Read) 56,956 km

First registration 31 Jan 2022

Number of holders 1

Power / Engine displacement 110 kw / 1,968 ccm

Fuel type / Cylinder Diesel / 4

Gearbox / Number of gears Automatic / 7

Type of drive Front drive

Type of vehicle Station wagon

Colour / colour code Midnight Black (Y9T)

Doors / Seats 5 / 5

Upholstery type Cloth / leather combination

Colour of upholstery Black-Anthracite

Re-import no

readiness to drive Not roadworthy / moveable



Vehicle details			
Maintenance booklet / proof	digital proof / complete	Next maintenance in	16,900 km
Last service on / at	02/2026 at 54,666 km		
Key is / should be	2 / 2	FZG documents	ZB#2 (B) was available (copy), ZB#1 (S) was not available.
		Letter No.	GG168628
Previous damage / Accident	Detectable	Repainting	None detectable
Inspection conditions	sufficient	Lifting equipment / pit	No
Test drive	Not performed	Engine function test	Performed
readiness to drive	Not roadworthy / moveable		
Manufacturer key number/ type code number	7593 / ASL 00058		
Emission standard	EURO6;WLTP;AP;PI/CI; M, N1 I	fine dust sticker	
Permitted total weight	2,070 kg	Empty weight	

Tyres

Mounted tyres				
#	Tyre size	Type of tyre	Manufacturer	Tread depth
1)	205/55 R17 91W	Winter tyres on Light alloy	Goodyear	6mm / 6mm
2)	205/55 R17 91H	Summer tyres on Light alloy	Nexen	5 mm
	205/55 R17 91W	Winter tyres on Light alloy	Goodyear	6 mm
Additional tyres				
#	Tyre size	Type of tyre	Manufacturer	Tread depth
1)	225/45 R17 91W	Summer tyres on Light alloy	Nexen	5mm / 5mm
2)	225/45 R17 91H	Winter tyres on Light alloy	Goodyear	4 mm
	225/45 R17 91W	Summer tyres on Light alloy	Nexen	5 mm
Replacement				
Typ	Tyre size	Type of tyre	Manufacturer	Tread depth
	Tirefit	Expiration date 08/2025		

Legend: Tread depth information for the left tire is listed first, for the right tire it is listed second on the axle in the direction of travel.



Equipment

Standard equipment

- Storage pockets on the backs of the front seats
- Airbag: Passenger airbag deactivation
- Airbag: Side airbag for driver and front passenger
- Electrically adjustable and heated exterior mirrors
- Exterior mirror housings painted in Cosmo Grey
- On-board computer
- Roof rails, black
- Electronic differential lock XDS
- Electronic parking brake
- Electric window regulator with anti-pinch protection and one-touch function
- Luggage compartment roller blind
- Cruise control system
- Illuminated glove compartment
- Rear window wiper
- Keyless Go (engine start/stop button)
- "Climatronic" air conditioning system
- Rear headrests (3)
- LED technology for headlights, daytime running lights and taillights
- Reading light front/rear
- Rear center armrest with pass-through option
- Fog lights with cornering light function in LED technology
- Upholstery: Cloth
- Radio accessories: 6 speakers
- Radio accessories: Digital radio reception DAB+
- Radio accessories: USB-C interface
- Wheels: Alloy wheels (4) 7.5 J x 17" "Dynamic II"
- Paddle shifters on the steering wheel
- SEAT Drive Profile
- Power steering
- Seat belts: Three-point automatic front and rear
- Seats: Driver's seat with height adjustment
- Seats: Lumbar support for front passenger
- Seats: Lumbar support for driver
- Seats: Sport comfort seats in the front
- Sun visor on driver and passenger side with make-up mirror and lighting
- Start-stop system and recuperation
- Power outlet: 12V socket at the front
- Illuminated front door sill trims
- Front Assist area monitoring system with City Emergency Braking function
- Virtual Cockpit
- Thermal insulation glazing
- Driver and passenger airbags
- Airbag: Head airbag system, front and rear
- Electrically folding exterior mirrors including passenger side mirror lowering
- LED turn signals integrated into the exterior mirrors
- Third brake light
- Diesel particulate filter
- Tachometer
- Electronic Stability Control (ESC) including Anti-lock Braking System (ABS)
- Luggage compartment lighting
- Speed limiter
- Transmission: 7-speed DSG
- Heated rear window
- ISOFIX child seat restraint system in the 2nd row of seats, left and right
- Front headrests (2)
- Paint finish: Solid
- Steering wheel: Three-spoke leather steering wheel with multifunction and logo
- Lights: Full LED taillights
- Fatigue detection
- Package: LED interior lighting package
- Radio: Media System Plus
- Radio accessories: Bluetooth interface with integrated hands-free system and audio streaming
- Tire pressure monitoring system
- Wheels: Tyre fit
- SEAT CONNECT
- Side windows from the 2nd row of seats and rear window are dark tinted.
- Seats, passenger seat height adjustable
- Seats: Remote release for folding down the rear seat backrest into the boot
- Seats: Rear seat backrest asymmetrically split and foldable
- Sport suspension "FR"
- Lane departure warning system
- Power outlet: 12V socket in the trunk
- Bumpers in body color
- Ultrasonic rear parking aid
- Variable luggage compartment floor
- Lashing eyes in the luggage compartment
- Electronic immobilizer
- Central locking with remote control



Extra equipment

- Package: Business Package INFOTAIN (Navigation system, prepared for activation of the SEAT CONNECT Online anti-theft package - Infotainment, navigation system with 10" display, 3D navigation, voice control, MAPCARE with integrated map for Europe - Wireless Full Link Connectivity incl. Android Auto and Apple CarPlay - Connectivity Box in the storage compartment of the center console incl. wireless charger - Anti-theft alarm system incl. interior monitoring, backup horn and tow-away protection)
- Luggage partition net
- Package: Winter Package (heated steering wheel - heated front seats)
- Paint finish: Metallic
- Park Assist with front parking aid

Brief expert findings

Documents submitted	At the time of the inspection, the vehicle registration certificate Part 2 (title) was available, but the vehicle registration certificate Part 1 (document) was not. (Copy)
VIN comparison	The vehicle identification number (VIN) was read from the vehicle and its conformity with the submitted documents was confirmed by the undersigned during the inspection.
Inspection	The inspection conditions were sufficient for the assessment of the vehicle. No lifting equipment or pit was available for inspecting the vehicle. Therefore, inspection of the vehicle's underside was only possible to a limited extent.
Test drive	No test drive/shunting maneuver was carried out during the inspection of the vehicle.
Engine function test	An engine test run was performed.
readiness to drive	The vehicle was not capable of driving under its own power at the time of inspection, but can be moved on its own axle with the aid of assistance.

Value reducing factors

No.	Component group	Description
1	Equipment	Tirefit filler - Expired - Replace
2	Instrument panel	Indicator light (Reifendruck) - on - Perform diagnosis
3	Door - front right side	Door edge - Scratch(es) - Smart repair
4	Wheel / tyres	Wheelset - complete (3 Winter 1 Sommer, umstecken) - Un- / install
5	Misc.	Main inspection - Due - Perform

Wear and tear

No.	Component group	Description
1	2nd wheel set	1 tyre (Winterrad, Nagel eingefahren) - Damaged - No deduction

The vehicle shows signs of wear and tear commensurate with its age and use.

Previous damages

No.	Previous damage	Extent of damage (Net)
1	Front, Provided by user / customer, from 3 Dec 2025	2.984,86 €



Order/Scope of Order

An order was placed to prepare a sales report for the described vehicle. This report includes the following:

- Description of key vehicle information
- Documentation of equipment features
(Delivery by third-party service providers)
- Documentation of damage, defects, missing parts
- Documentation of prior damage, unrepaired prior damage, repainting
- A brief visual or functional inspection of the equipment details, if possible.
(Functional testing of driver assistance systems is not included in the scope of services!)
- a photographic documentation of the vehicle

Basis for the order

This product is based on the guidelines for vehicle returns and valuations published by Alphabet Fleet GmbH. The expert makes the specific findings in each individual case objectively, within the framework of the prescribed standards, based on their own expertise.

The vehicle inspection takes place in a fully assembled, unassembled state.

Damage or defects that can only be detected during disassembly/diagnostic work or through further investigation remain within the realm of prognostic risk. An increased risk exists due to concealed defects caused by fraudulent misrepresentation and which were not identifiable by the expert.

Damage or defects resulting from normal use or wear and tear of the vehicle will be accepted in accordance with the applicable standard.

There was no explicit identification or monetary consideration of the expected features within the product.

Features which, in their nature and extent, slightly exceed normal use but do not constitute unacceptable damage, will be documented and indicated as signs of wear, if applicable.

Damage or defects that, according to the applicable standard, can no longer be attributed to normal use or wear and tear are listed under "Value Reducing Factors" in the product description.

Depending on the product specification, a monetary ID can be provided. If this takes place, the costs can be 100% or pro rata depending on the vehicle's age and mileage.

Previous damages

According to available information previous damages were repaired at the vehicle. Traces of repairs, which allow conclusions about the area of repair, were not recognizable during the inspection.

Comments

- Für den montierten Radsatz wurde kein Nachweis erbracht.

- Winterradsatz ist kein Bestandteil des Auslieferungsumfangs.



Figure 1: Diagonal front (left)



Figure 2: Diagonal front (right)



Figure 3: Diagonal rear (left)



Figure 4: Diagonal rear (right)



Figure 5: Interior - front



Figure 6: Interior - rear



Figure 7: Instrument cluster



Figure 8: Instrument panel



Figure 9: Interior 360° view



Figure 10: Cargo area



Figure 11: VIN



Figure 12: Mounted tyres



Figure 13: Documents



Figure 14: Documents

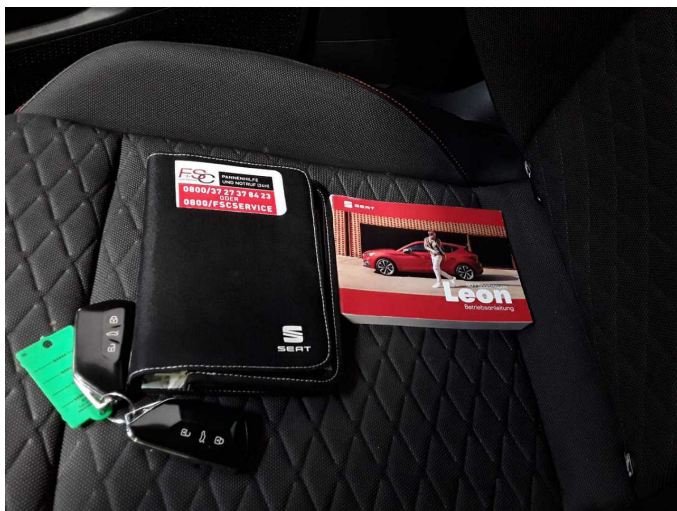


Figure 15: Documents



Figure 16: Additional tyres



Figure 17: Navigation

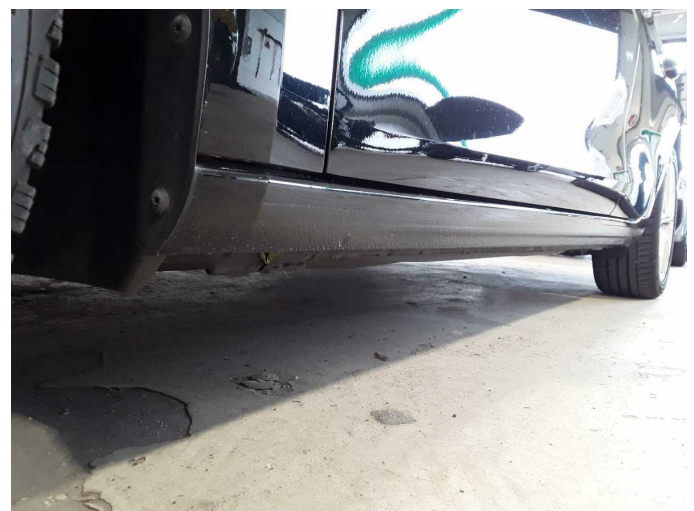


Figure 18: Misc.



Figure 19: Misc.



Figure 20: Misc.



Figure 21: Misc.

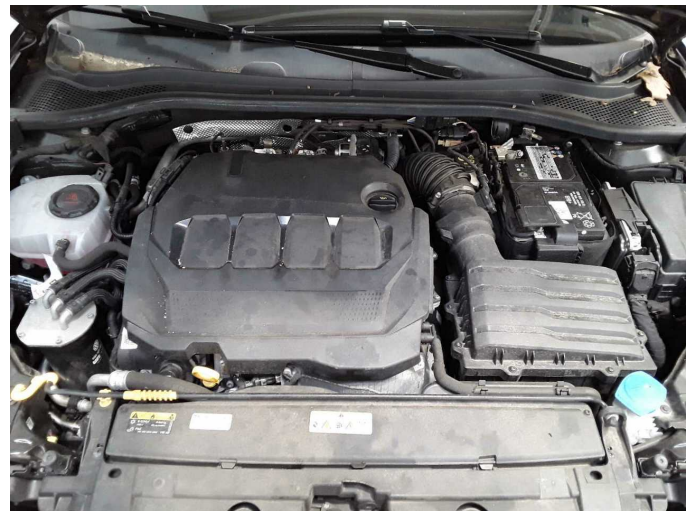


Figure 22: Misc.

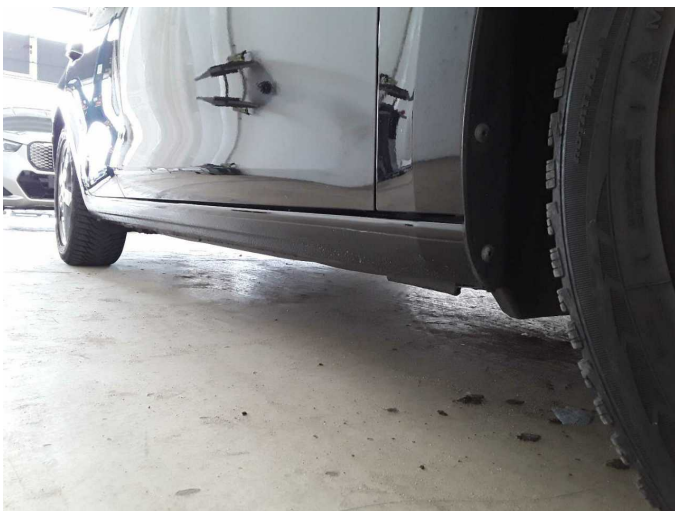


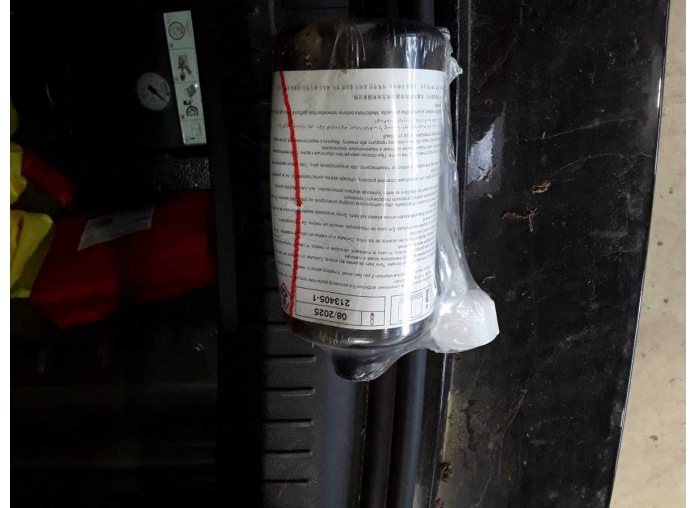
Figure 23: Misc.



Figure 24: Misc.



Figure 25: Misc.



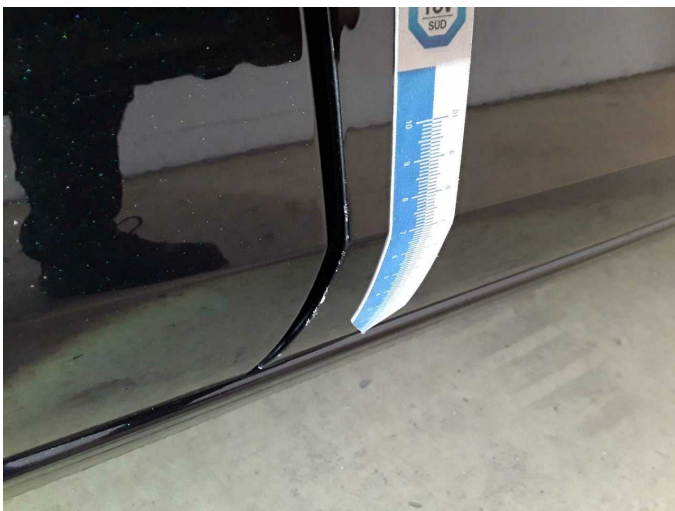
Damage 1: Equipment: Tirefit filler - Expired - Replace



Damage 2: Instrument panel: Indicator light (Reifendruck) - on - Perform diagnosis



Damage 3: Door - front right side: Door edge - Scratch(es) - Smart repair



Damage 3: Door - front right side: Door edge - Scratch(es) - Smart repair



Wartungshistorie

(gemäß Auftraggeber Informationen)

Fahrgestellnummer: VSSZZZKLZNR034034

Hersteller / Modell: SEAT SEAT Leon Sportstourer 2.0 TDI DSG FR

Datum	KM-Stand	Beschreibung
04.02.2026	54.666	Motoröl b. Wartung; Ölfilter ern; Regelwartungsdienst; Wartung Sonstiges
24.01.2024	28.999	Regelwartungsdienst; Wartung Sonstiges
22.04.2023	16.876	Motoröl b. Wartung; Ölfilter ern; Regelwartungsdienst; Wartung Sonstiges; Wartung Sonstiges