

Expertise

Protocol number: 46368567
Order No. / Reference: 26482141
Inspection date: 3 Jul 2026

Manufacturer: Audi

Model: Q4 e-tron 40 Sportback

VIN: WAUZZZFZ2PP049013



Vehicle details

Manufacturer / Type / Model / Equipment

Audi Q4 e-tron 40 Sportback

Vehicle Identification number WAUZZZFZ2PP049013

Mileage (Read) 58,911 km

First registration 11 May 2023

Number of holders 1

Power / Engine displacement 70 kw /

Fuel type / Cylinder Electric / 0

Gearbox / Number of gears Direct drive / 1

Type of drive Rear drive

Type of vehicle SUV

Colour / colour code Mythossschwarz Metallic

Doors / Seats 5 / 5

Upholstery type Cloth / leather combination

Colour of upholstery Black-Grey



Vehicle details

Maintenance booklet / proof	digital proof / complete	Next maintenance in	9 Monat(e)
Last service on / at	04/2025 at 38,006 km		
Key is / should be	2 / 2	FZG documents	ZB#2 (B) was available (copy), ZB#1 (S) was not available.
		Letter No.	GS537363
Previous damage / Accident	Detectable	Repainting	Detectable
Inspection conditions	sufficient	Lifting equipment / pit	No
Test drive	Not performed	Engine function test	Performed
Manufacturer key number/ type code number	0588 / BZT 00054		
Emission standard	2017/1151;WLTP;reine Elektrofz	fine dust sticker	
Permitted total weight	2,625 kg	Empty weight	
Dimensions	4590 x 1865 x 1602		

Tyres

Mounted tyres

#	Tyre size	Type of tyre	Manufacturer	Tread depth
1)	235/55 R19 101T	Winter tyres on Light alloy	Bridgestone	6mm / 6mm
2)	255/50 R19 103T	Winter tyres on Light alloy	Bridgestone	5mm / 5mm

Additional tyres

#	Tyre size	Type of tyre	Manufacturer	Tread depth
1)	235/50 R20 100T	Summer tires (with run-flat tires) on Light alloy	Bridgestone	1mm / 1mm
2)	255/45 R20 101T	Summer tires (with run-flat tires) on Light alloy	Bridgestone	4mm / 4mm

Legend: Tread depth information for the left tire is listed first, for the right tire it is listed second on the axle in the direction of travel.

TÜV SÜD Auto Partner GmbH
Gutenbergstraße 13
70771 Leinfelden-Echterdingen

Inspection location
ARS Altmann AG Automobillogistik
Römerstraße 3
64560 Riedstadt



Equipment



Standard equipment

- Airbag for driver and front passenger (with front passenger airbag deactivation)
- Acoustic vehicle warning system (generating a warning tone to increase traffic safety for pedestrians and cyclists)
- Anti-lock braking system (ABS)
- Audi connect Emergency Call and Service (In the event of a serious accident, an automatic emergency call is triggered to the Audi emergency call center. Using the automatically transmitted vehicle information, help can be organized as quickly as possible. Even in the event of a breakdown or minor accident, immediate assistance is available via the online breakdown call and the Audi damage service. Includes the following services: - legal emergency call - Audi connect emergency call - online breakdown call - Audi damage service)
- Audi drive select
- Evasive Steering Assist and Turning Assist (The Evasive Steering Assist can help the driver steer the vehicle around an obstacle in an evasive situation deemed critical. If the driver actively avoids the obstacle after the acute warning, the Evasive Steering Assist supports them by selectively braking the wheels and applying a small steering torque to correct the steering angle.)
- Electrically adjustable/heated exterior mirrors (left aspherical, right convex - housing painted in body color - with integrated LED side indicators - including heated windscreen washer nozzles)
- Tachometer
- Rear parking aid (supports reversing by acoustically indicating the distance to a detected object behind the vehicle; measured by discreetly integrated ultrasonic sensors in the bumper, active when reverse gear is engaged)
- Front and rear floor mats (made of velour in black)
- Electrically opening and closing tailgate without sensor-controlled tailgate release (The tailgate can be opened electrically by pressing the button on the vehicle key, in the driver's door, or the soft-touch button on the tailgate handle. Closing the tailgate is just as easy and convenient: simply press the button on the inside of the tailgate, the button in the driver's door, or the button on the optional comfort key. A soft-close mechanism facilitates manual closing when necessary.)
- Automatic climate control (1-zone automatic climate control - electronically regulates air temperature, quantity and distribution - sun position-dependent control - automatic recirculation control - dust and odor separating allergen filter - separate defroster button for faster defrosting of the front and side windows)
- Mode 3 charging cable for public charging (charging cable for charging at public AC charging stations (Type 2). The cable connects the charging station to the vehicle's AC charging port. A current of up to 32 A can be transmitted per phase.)
- LED taillights (The light signature is a visible identifying feature to the rear. The LED taillights impress with faster activation of the taillights and brake lights, thus enabling earlier detection by following traffic. The LED taillights include: - Turn signals - Brake lights - Taillights - License plate lights - Reversing lights in white)
- Airbag: Front side airbags, with head airbag and interaction airbag in the front (front side airbags integrated into the seatbacks. With head airbag system: deploys in front of the side window area and can thus protect front and outer rear passengers in the event of a side impact.)
- Audi connect Remote & Control for MMI plus and pro (The services of Audi connect Remote & Control connect the vehicle to the smartphone. With the myAudi app, the vehicle can be accessed remotely, and its last parking location and current vehicle status can be viewed. This includes, among other things, the current electric range, the current charge level, and the current mileage. Audi connect Remote & Control for MMI basic includes the following services: - Parking location - Vehicle status - Remote charging control - Remote climate control)
- Audi pre sense front (within system limits, uses a front radar to detect the area in front of the vehicle and warns the driver with visual and acoustic signals to indicate a potential hazard from vehicles ahead, whether moving or stationary – pedestrian and cyclist detection registers, within system limits, when a pedestrian or cyclist is moving on or crossing the road. The system then warns the driver with an acoustic and visual signal)
- On-board tools (in the luggage compartment)
- Third brake light (in LED technology)
- Fabric headliner
- Decorative insert in black haptic lacquer (for inserts in the instrument panel; accent surfaces in the instrument panel and trim in the center console in silver effect lacquer; haptic lacquer consists of approx. 50 % aus renewable raw materials.)
- Electronic Stability Control (ESC)
- Chassis: Comfort chassis (with balanced tuning, for very good ride comfort combined with good driving dynamics)
- Transmission: 1-speed direct drive
- rear window wiper
- Interior lighting (LED roof module front/rear - trunk light left - illuminated glove compartment - storage compartment center console front)
- Interior mirror dimming
- i-Size child seat attachment on the front passenger side, i-Size and Top Tether on the outer rear seats (standard mounting for the practical attachment of i-Size and ISOFIX child seats; including additional attachment points (Top Tether)).)
- Comfort center armrest in the front (adjustable in tilt and longitudinally movable)
- Headrests (5) (height adjustable front and rear)
- Combo 2 (EU) charging socket (charging access to the high-voltage battery via Combined Charging System Type 2 (CCS 2), i.e., a combined AC and DC charging access. The DC charging access enables high-power charging. - Charging access via AC (Mode 2 and Mode 3) - Charging access via DC charging stations (Mode 4))



- Light and rain sensor
- Model name and performance/technology lettering
- On-board charger up to 11 kW (AC) (The Audi e-tron can be charged with a maximum alternating current (AC) charging capacity of up to 11 kW as standard. The on-board charger integrated into the vehicle sets the AC charging capacity, which is limited to 11 kW. The AC/DC converter converts alternating current (AC) to direct current (DC) during the charging process to charge the high-voltage battery.)
- Radio: MMI Radio (high-resolution 10.1-inch color display including MMI touch operation - 10.25-inch digital instrument cluster - Audi music interface with 2 USB-C ports - Bluetooth interface (hands-free calling and audio streaming) - 4 passive speakers - AM/FM phase diversity - 1 x USB Type-A interface for charging external devices - DAB+ - speed-dependent volume adjustment - voice control system with natural language for controlling infotainment and vehicle functions - WLAN hardware)
- Lane Departure Warning (within system limits, helps prevent unintentional lane departures. If the system is activated and ready, and the driver has not used the turn signal, the Lane Departure Warning helps prevent crossing detected lane markings by making corrective steering interventions. Additional steering wheel vibration can be set at the driver's request. Operating range from approximately 60 to a maximum of 250 km/h)
- 12-volt socket (12-volt on-board power socket and 2 x USB-C ports for charging devices)
- First aid kit with warning triangle (warning triangle - first aid kit - 2 high-visibility vests)
- Camera-based traffic sign recognition (Camera-based traffic sign recognition assists with driving by displaying traffic signs detected within the system's boundaries, such as speed limits, no-overtaking zones, and temporary speed restrictions, which are within the detection range of the front camera. Within the system's boundaries, the system recognizes the beginning and end of highways, expressways, towns, and traffic-calmed areas.)
- LED headlights (daytime running lights - low beam - high beam - position lights - turn signals - tourist lights (adjustable light pattern for right- or left-hand traffic) - headlight range control (automatic compensation for vehicle load))
- Steering wheel: Double-spoke leather steering wheel with multifunction (For convenient operation of the extensive standard and optional infotainment features, the steering wheel is equipped with multifunction buttons with touch control. Height and reach of the steering wheel are manually adjustable.)
- Package: Gloss package (horizontal window trim strips in anodized aluminum)
- Upholstery: Fabric Index
- Wheel: Tire pressure monitoring system (visual and audible warning in case of pressure loss in one or more wheels - display in the driver information system)
- Power steering
- Seats: Standard front seats (with manual adjustment of seat height, seat longitudinal position, backrest angle, headrest height and seat belt height)
- Seats: Rear seat backrest foldable (split, in a 40:60 ratio or fully foldable)
- Seats: Front seats manually adjustable
- Speed limiter without cruise control and without adaptive cruise control (allows individual limiting of the maximum speed from 30 km/h, e.g., within built-up areas. When the set limit is reached, the vehicle's speed is gently reduced. Operation is via a separate steering column stalk. The set maximum speed is displayed in the driver information system. The limit can be overridden at any time by kick-down.)
- Stationary climate control (With the standard stationary climate control, it is possible to cool the interior in summer before starting the journey or to preheat it in winter. The stationary climate control can be specifically scheduled and started by entering a departure time immediately before the start of the journey. The functions can be programmed and activated via the MMI in the vehicle and can be conveniently switched on with the myAudi app.)
- Electronic immobilizer
- Green heat-insulating glazing (green tinted - for rear window, door and side windows - rear window heated, with timer)
- Central locking



Extra equipment

- Deletion of model designation and performance/technology lettering
- Front seat heating (heats seat and backrest center section (standard seats in fabric), otherwise seat and backrest center section as well as seat side bolsters - individually adjustable in 3 stages for driver and front passenger via direct selection button on the climate control unit)
- Navigation: MMI Navigation plus (11.6-inch MMI Navigation plus with MMI touch including Audi connect Navigation & Infotainment - camera-based traffic sign recognition - 10.25-inch Audi virtual cockpit with two display options "Classic" and "Sport" - voice control)
- Package: S line exterior (S line bumpers with bottom line all around in contrasting paint finish Manhattan Grey Metallic - Wheels, 5-Y-spoke, 8.0 J / 9.0 J x 20, tires 235/50 / 255/45 R 20 - S line exterior differentiations with S line emblem on the fenders - Sport suspension)
- Package: S line interior with sport seats in black fabric/leatherette combination (front sport seats - fabric Puls/leatherette mono.pur 550 - S embossing in black-silver - dual leather multifunction steering wheel with chrome-look applications, S emblem - ambient lighting package in white light - illuminated door sills with aluminum inlays at the front, with S lettering - aluminum decorative inlays - high-gloss black accent surfaces - aluminum look in the interior - stainless steel pedals - black fabric headliner)
- Wheels: Light alloy wheels (4 pieces) in 5-Y-spoke design (front size: 8.0 J x 20 with 235/50 R 20 tires, rear size: 9.0 J x 20 with 255/45 R 20 mobility tires)
- Chassis: Sport chassis (The sport chassis, with a 15 mm lower ride height compared to the standard chassis and more dynamic spring and damper tuning, uses a McPherson strut axle with lower wishbones, shock absorbers, coil springs, subframe and stabilizer bar at the front. At the rear, a 4-link axle with separate spring and damper arrangement, shock absorbers, coil springs, subframe and stabilizer bar is used.)
- Package: Ambient Lighting Package
- Package: Assistance Package Plus (Adaptive Cruise Control, the system uses a radar sensor to detect vehicles ahead within the system's limits and maintains the set speed and distance as constant as possible within the control range. - Speed limiter - Parking Assist Plus, supports the driver when parking and maneuvering forwards and backwards with acoustic signals and visual display with virtual lane guidance. - Rearview camera)
- Package: Climate Control Package (The 3-zone automatic climate control electronically regulates the air temperature, volume, and distribution. An additional function is the sun-position-dependent control. The temperature settings for the driver and front passenger sides can be adjusted separately. Separate temperature control and air vents are available in the rear. The 3-zone automatic climate control features automatic recirculation in combination with a dust- and odor-removing cabin air filter. The comfort stationary climate control cools or heats the interior.)
- Paint finish: Metallic
- Radio accessories: SONOS Premium Sound System

Brief expert findings

Documents submitted	At the time of the inspection, the vehicle registration certificate Part 2 (title) was available, but the vehicle registration certificate Part 1 (document) was not. (Copy)
VIN comparison	The vehicle identification number (VIN) was read from the vehicle and its conformity with the submitted documents was confirmed by the undersigned during the inspection.
Inspection	The inspection conditions were sufficient for the assessment of the vehicle. No lifting equipment or pit was available for inspecting the vehicle. Therefore, inspection of the vehicle's underside was only possible to a limited extent.
Test drive	No test drive/shunting maneuver was carried out during the inspection of the vehicle.
Engine function test	An engine test run was performed.



Value reducing factors

No.	Component group	Description
1	Engine	Engine (Folgekosten möglich) - Soiled - Clean
2	Side panel - rear right side	Side panel - dent(s) - Smooth repair work
3	Door - front left side	Door - Scratch(es) - Smart repair
4	2nd wheel set	1 alloy rim - Scratch(es) - Loss in value
5	Mudguard - right side	Wheel arch - Scratched - Loss in value
6	Door - rear right side	Door (drücken und auslegen/ polieren) - Dent / paintcoat damage - Smart repair
7	Front bumper	Spoiler (Unterhalb) - Scratch(es) - Loss in value
8	Rear bumper	Spoiler - Scratched - Replace
9	2nd wheel set	2 tyres (Flanken abgefahren) - Worn - Replace
10	Front bumper	Front bumper - Scratched - Paint
11	Vehicle glazing	Rear window - Scratch(es) - Replace

Wear and tear

No.	Component group	Description
1	Bonnet	Bonnet - Stone chips - No deduction
2	Vehicle glazing	Windscreen - Stone chips - No deduction

The vehicle shows signs of wear and tear commensurate with its age and use.

Previous damages

No.	Previous damage	Extent of damage (Net)
1	Front, Side - left, Provided by user / customer, from 2 Aug 2024	2.841,78 €
2	Front, Side - left, Provided by user / customer, from 22 Jul 2024	2.871,28 €

Repainting

No.	Repainting
1	Mudguard - left side, Door - rear left side, Professionally carried out, Invoice of repair done Non-existent

Paint coat thickness measurement

Mudguard - left side	159 µm	Door - rear left side	168 µm
----------------------	--------	-----------------------	--------

Order/Scope of Order

An order was placed to prepare a sales report for the described vehicle. This report includes the following:

- Description of key vehicle information
- Documentation of equipment features
(*Delivery by third-party service providers*)
- Documentation of damage, defects, missing parts
- Documentation of prior damage, unrepaired prior damage, repainting
- A brief visual or functional inspection of the equipment details, if possible.
(*Functional testing of driver assistance systems is not included in the scope of services!*)
- a photographic documentation of the vehicle



Basis for the order

This product is based on the guidelines for vehicle returns and valuations published by Alphabet Fleet GmbH. The expert makes the specific findings in each individual case objectively, within the framework of the prescribed standards, based on their own expertise.

The vehicle inspection takes place in a fully assembled, unassembled state.

Damage or defects that can only be detected during disassembly/diagnostic work or through further investigation remain within the realm of prognostic risk. An increased risk exists due to concealed defects caused by fraudulent misrepresentation and which were not identifiable by the expert.

Damage or defects resulting from normal use or wear and tear of the vehicle will be accepted in accordance with the applicable standard.

There was no explicit identification or monetary consideration of the expected features within the product.

Features which, in their nature and extent, slightly exceed normal use but do not constitute unacceptable damage, will be documented and indicated as signs of wear, if applicable.

Damage or defects that, according to the applicable standard, can no longer be attributed to normal use or wear and tear are listed under "Value Reducing Factors" in the product description.

Depending on the product specification, a monetary ID can be provided. If this takes place, the costs can be 100% d or pro rata depending on the vehicle's age and mileage.

Previous damages

According to available information previous damages were repaired at the vehicle. Traces of repairs, which allow conclusions about the area of repair, were not recognizable during the inspection.

Comments

- Die Unterbodenbesichtigung war nur ebenerdig & eingeschränkt möglich. Mehrkosten möglich.
- Der Winterradsatz ist kein Bestandteil der Ausstattungsliste.



Figure 1: Diagonal front (left)



Figure 2: Diagonal front (right)



Figure 3: Diagonal rear (left)



Figure 4: Diagonal rear (right)



Figure 5: Interior - front



Figure 6: Interior - rear



Figure 7: Instrument cluster



Figure 8: Instrument panel



Figure 9: Interior 360° view



Figure 10: Cargo area

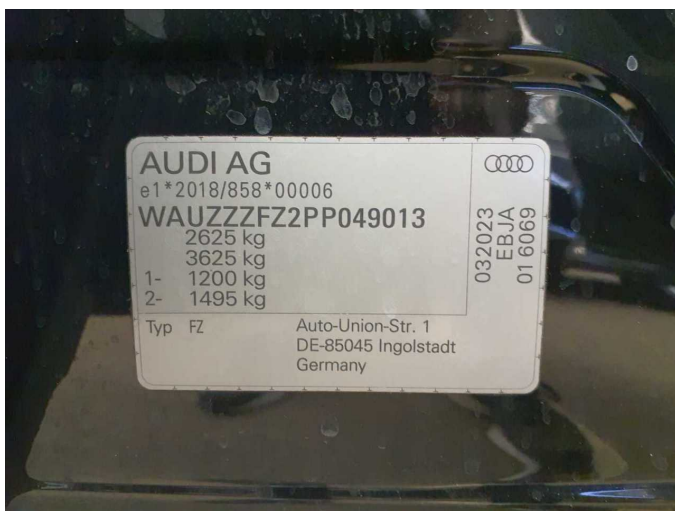


Figure 11: VIN



Figure 12: Mounted tyres



Figure 13: Documents



Figure 14: Additional tyres



Figure 15: Additional tyres



Figure 16: Navigation

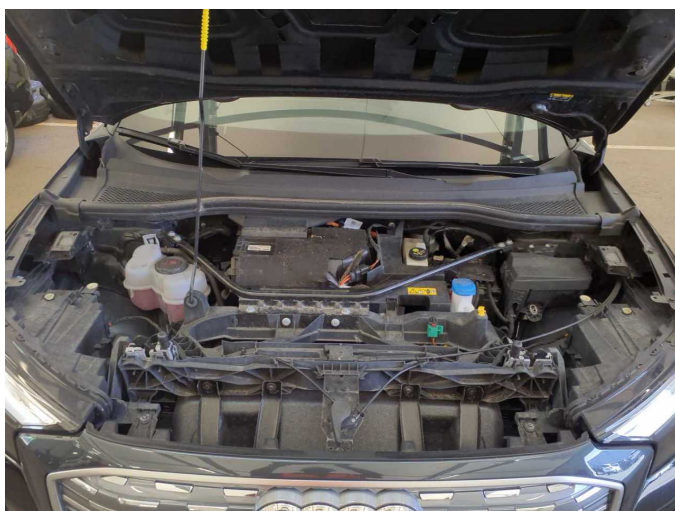


Figure 17: Misc.



Figure 18: Misc.



Figure 19: Misc.



Figure 20: Misc.



Figure 21: Misc.



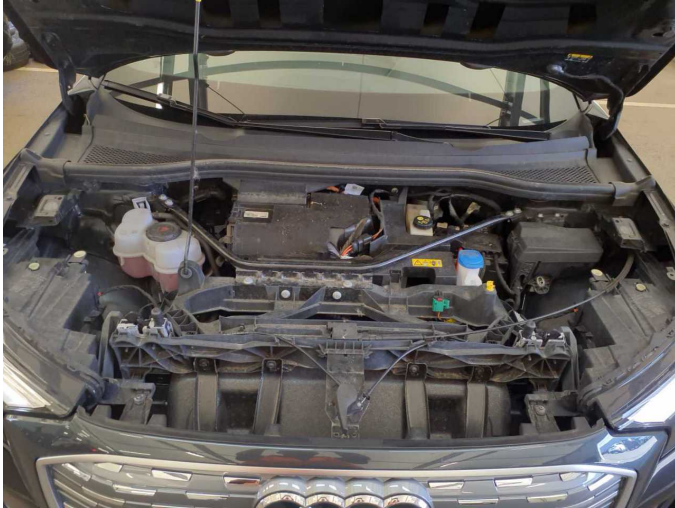
Figure 22: Misc.



Figure 23: Misc.



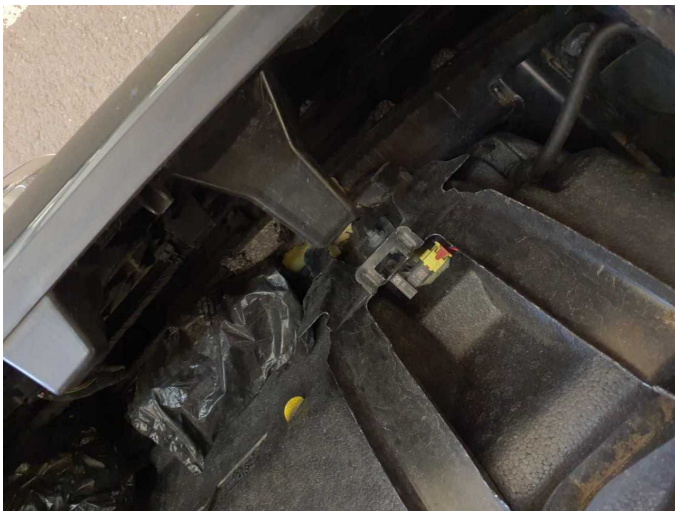
Figure 24: Misc.



Damage 1: Engine: Engine (Folgekosten möglich) - Soiled - Clean



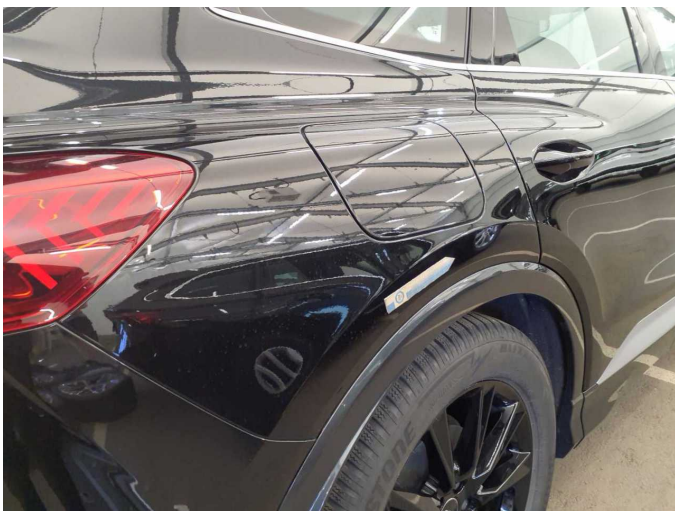
Damage 1: Engine: Engine (Folgekosten möglich) - Soiled - Clean



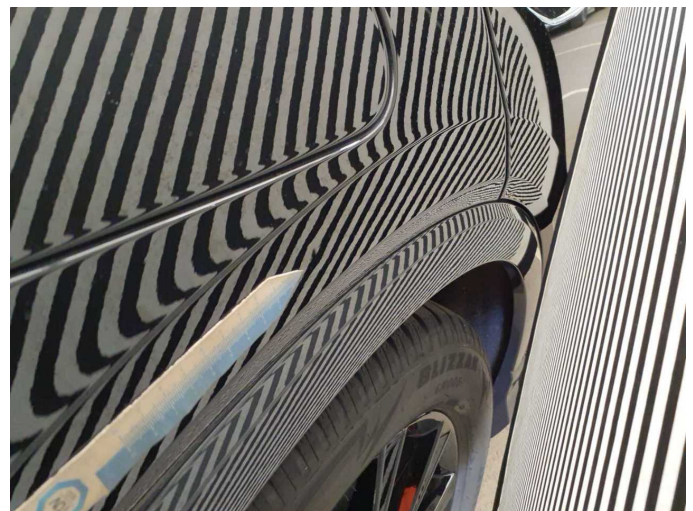
Damage 1: Engine: Engine (Folgekosten möglich) - Soiled - Clean



Damage 1: Engine: Engine (Folgekosten möglich) - Soiled - Clean



Damage 2: Side panel - rear right side: Side panel - dent(s) - Smooth repair work



Damage 2: Side panel - rear right side: Side panel - dent(s) - Smooth repair work



Damage 3: Door - front left side: Door - Scratch(es) - Smart repair



Damage 3: Door - front left side: Door - Scratch(es) - Smart repair



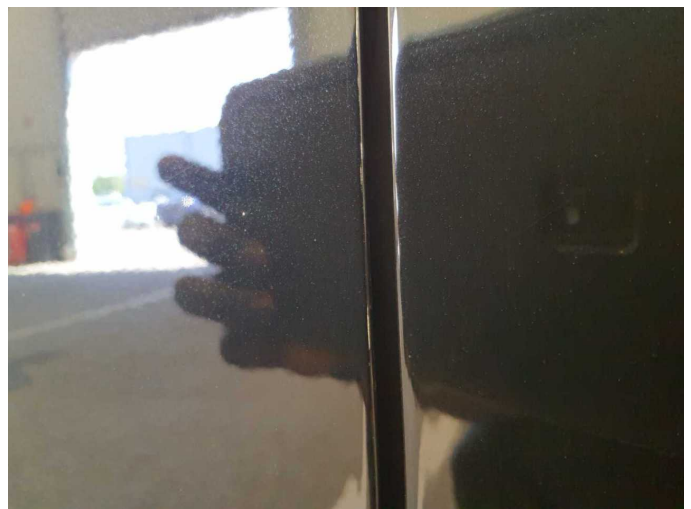
Damage 3: Door - front left side: Door - Scratch(es) - Smart repair



Damage 3: Door - front left side: Door - Scratch(es) - Smart repair



Damage 3: Door - front left side: Door - Scratch(es) - Smart repair



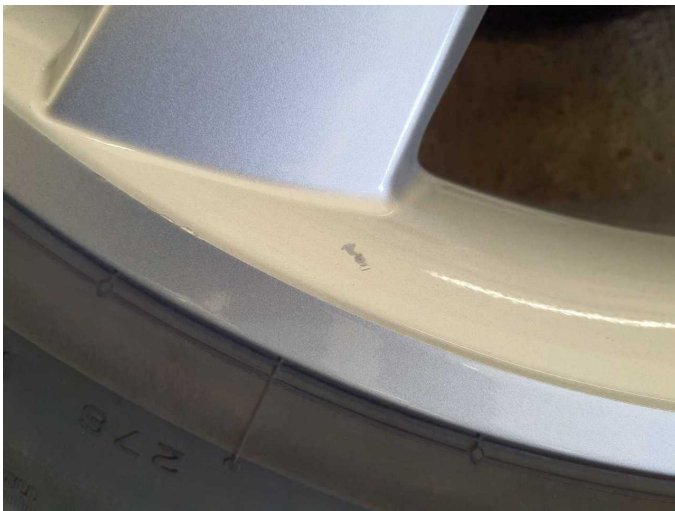
Damage 3: Door - front left side: Door - Scratch(es) - Smart repair



Damage 4: 2nd wheel set: 1 alloy rim - Scratch(es) - Loss in value



Damage 4: 2nd wheel set: 1 alloy rim - Scratch(es) - Loss in value



Damage 4: 2nd wheel set: 1 alloy rim - Scratch(es) - Loss in value



Damage 4: 2nd wheel set: 1 alloy rim - Scratch(es) - Loss in value



Damage 5: Mudguard - right side: Wheel arch - Scratched - Loss in value



Damage 5: Mudguard - right side: Wheel arch - Scratched - Loss in value



Damage 6: Door - rear right side: Door (drücken und auslegen/ polieren)
- Dent / paintcoat damage - Smart repair



Damage 6: Door - rear right side: Door (drücken und auslegen/ polieren)
- Dent / paintcoat damage - Smart repair



Damage 7: Front bumper: Spoiler (Unterhalb) - Scratch(es) - Loss in value



Damage 7: Front bumper: Spoiler (Unterhalb) - Scratch(es) - Loss in value



Damage 8: Rear bumper: Spoiler - Scratched - Replace



Damage 8: Rear bumper: Spoiler - Scratched - Replace



Damage 9: 2nd wheel set: 2 tyres (Flanken abgefahren) - Worn - Replace



Damage 9: 2nd wheel set: 2 tyres (Flanken abgefahren) - Worn - Replace



Damage 9: 2nd wheel set: 2 tyres (Flanken abgefahren) - Worn - Replace



Damage 9: 2nd wheel set: 2 tyres (Flanken abgefahren) - Worn - Replace



Damage 9: 2nd wheel set: 2 tyres (Flanken abgefahren) - Worn - Replace



Damage 9: 2nd wheel set: 2 tyres (Flanken abgefahren) - Worn - Replace



Damage 10: Front bumper: Front bumper - Scratched - Paint



Damage 10: Front bumper: Front bumper - Scratched - Paint



Damage 10: Front bumper: Front bumper - Scratched - Paint



Damage 10: Front bumper: Front bumper - Scratched - Paint



Damage 11: Vehicle glazing: Rear window - Scratch(es) - Replace



Damage 11: Vehicle glazing: Rear window - Scratch(es) - Replace



Damage 11: Vehicle glazing: Rear window - Scratch(es) - Replace



Repainting 1: Mudguard - left side, Door - rear left side



Repainting 1: Mudguard - left side, Door - rear left side



Repainting 1: Mudguard - left side, Door - rear left side



Repainting 1: Mudguard - left side, Door - rear left side



Wartungshistorie

(gemäß Auftraggeber Informationen)

Fahrgestellnummer: WAUZZZFZ2PP049013

Hersteller / Modell: AUDI AUDI Q4 e-tron 40 Sportback

Datum	KM-Stand	Beschreibung
08.05.2026	56.909	Systemtest/Eigendiagnose
11.04.2025	38.006	Bremsflüssigkeit; Bremsflüssigkeit ern; Regelwartungsdienst