



RENAULT EXPRESS: 8009-MDS

Vinnnumber:	VF1RJK00970326307	Versionname:	Advance 1.5 Blue dCi 70 kW (95 cv) furgón derivado de turismo 70kW 4P manual
First Registrationdate:	2/02/2023	Fiscalpower:	
Expertise Mileage:		Power Kw:	
Bodytype:	Transporter	Body colour:	White
Gearbox:	MAN 6 VIT	Type of rims (mounted):	Steel
Transmission:			
Fueltype:	Diesel		
Engine functioning:	No		
Battery functioning:	No		
Vehicle running:	No		
Number of seats:	2		
Number head rests:	2		
Type of rims (mounted):	Steel		
Certificate of Conformity:	Yes		
Category:	Light Commercial Vehicle		
Registration Certificate Car (BE):	Yes		

Options

Number of keys total:	2	Radio:	
Number keys remote:	2		
Windows electric F:			
Steering wheel multifunctional:			
Type of climate control:	Manual climate control		

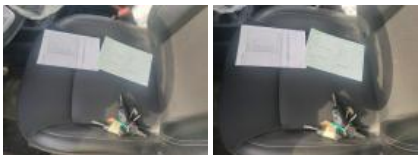
Tyres

185/65/15/92 T				
Summer tyres:	Fr.L.	Goodyear: 3 mm	Fr.R.	Goodyear: 3 mm
	Re.L.	Goodyear: 3 mm	Re.R.	Goodyear: 3 mm
Tyre profile depth FL:				3.0
Tyre profile depth FR:				3.0
Tyre profile depth RL:				3.0
Tyre profile depth RR:				3.0
Tyre size FL:				185/65 R 15 92 T
Tyre size FR:				185/65 R 15 92 T
Tyre size RL:				185/65 R 15 92 T
Tyre size RR:				185/65 R 15 92 T
Tyre type FL:				Summer
Tyre type FR:				Summer
Tyre type RL:				Summer
Tyre type RR:				Summer
Tyre make FL:				259
Tyre make FR:				259
Tyre make RL:				259
Tyre make RR:				259

Assistance equipment

Spare wheel:	Yes	Jack:	Yes
--------------	------------	-------	------------

User's manual, Missing, Repair/replace (lump sum)



Seat cover FL, Hole, Repair/replace (lump sum)



Tyres, No damage, Check



Bodywork, Accident, Check



Bodywork, Glue residues, Remove lettering



Bodywork, Not original part, Acceptable



Bodywork, Accident, Check

