

Expertise

Protocol number: 45875844
Order No. / Reference: 26381908
Inspection date: 9 Jun 2026

Manufacturer: Volkswagen

Model: Tiguan 2.0 TDI SCR 4MOTION DSG Elegance

VIN: WVGZZZ5NZNW520902



Vehicle details

Manufacturer / Type / Model / Equipment

Volkswagen Tiguan 2.0 TDI SCR 4MOTION DSG Elegance

Vehicle Identification number WVGZZZ5NZNW520902

Mileage (Read) 130,455 km

First registration 7 Apr 2022

Number of holders 1

Power / Engine displacement 147 kw / 1,968 ccm

Fuel type / Cylinder Diesel / 4

Gearbox / Number of gears Automatic / 7

Type of drive All-wheel drive

Type of vehicle SUV

Colour / colour code Mondsteingrau

Doors / Seats 5 / 5

Upholstery type Alcantara / cloth

Colour of upholstery Black-Anthracite



Vehicle details			
Maintenance booklet / proof	digital proof / complete	Next maintenance in	14,400 km
Last service on / at	09/2025 at 114,843 km		
Key is / should be	2 / 2	FZG documents	ZB#2 (B) was available (copy), ZB#1 (S) was not available.
		Letter No.	GJ038913
Previous damage / Accident	Detectable	Repainting	None detectable
Inspection conditions	sufficient	Lifting equipment / pit	No
Test drive	Not performed	Engine function test	Performed
Manufacturer key number/ type code number	0603 / CLE 02469		
Emission standard	EURO6;WLTP;AP;PI/CI; M, N1 I	fine dust sticker	
Permitted total weight	2,250 kg	Empty weight	

Tyres

Mounted tyres				
#	Tyre size	Type of tyre	Manufacturer	Tread depth
1)	235/55 R18 100V	Summer tyres on Light alloy	Pirelli	8mm / 8mm
2)	235/55 R18 100V	Summer tyres on Light alloy	Pirelli	8mm / 8mm
Additional tyres				
#	Tyre size	Type of tyre	Manufacturer	Tread depth
1)	235/55 R18 104H	Winter tyres on Light alloy	Pirelli	5mm / 5mm
2)	235/55 R18 104H	Winter tyres on Light alloy	unterschiedliche Hersteller	6mm / 6mm
Replacement				
Typ	Tyre size	Type of tyre	Manufacturer	Tread depth
N	145/85 R18 103M	Summer tyres on Steel	Sonstige	4 mm

Legend: Tread depth information for the left tire is listed first, for the right tire it is listed second on the axle in the direction of travel.



Equipment

Standard equipment

- Airbag for driver and front passenger including knee airbag on the driver's side
- Permanent 4MOTION all-wheel drive
- Adaptive Cruise Control (ACC) (DSG)
- Electrically adjustable and heated exterior mirrors
- third brake light
- Silver anodized roof rails
- Diesel particulate filter
- Tachometer
- Parking assistance
- Electronic Stability Program with counter-steering support
- Driving profile selection
- Electric windows front and rear
- Windscreen made of laminated safety glass, heat and sound insulating
- Tailgate with electric opening and closing, adjustable opening angle
- Interior mirror automatically dimming
- LED license plate lighting
- Combination instrument cluster with electronic speedometer
- Paint finish: Solid
- LED matrix headlights
- Light in the front footwell
- Front center armrest adjustable in height and length, with storage box and rear air vents
- Emergency call service
- Package: Chrome package
- Padding: Microfleece
- Radio accessories: 8 speakers
- Tire pressure monitoring system
- Wheels: Light alloy (4) "Frankfurt" 7 J x 18
- Gearshift knob in leather
- electromechanical power steering
- Seats: Front passenger seat backrest folds down completely
- Seats: Rear bench seat asymmetrically split
- Seats: Front seats with height adjustment
- Start-stop system with brake energy recuperation
- Power outlet: 2 USB-C ports on the front
- Textile floor mats front and rear
- Electronic immobilizer
- Central locking without safe locking, with remote control and 2 remote keys
- Airbag: Head airbag system for front and rear passengers including front side airbags
- App-Connect including App-Connect Wireless for Apple CarPlay and Android Auto
- Hill descent control
- Chrome applications on mirror adjustment switches, window regulator switches, door pull handles
- Display: Digital Cockpit Pro, multicolor, various selectable info profiles
- Electronic parking brake including auto-hold function
- Automatic headlight control, with LED daytime running lights
- High beam control Light Assist
- Pedestrian detection
- Transmission: 7-speed DSG
- Rear window heated
- rear window wiper
- ISOFIX mounting points, also for i-Size child car seats
- Air conditioning system "Air Care Climatronic"
- Rear headrests (3)
- Front headrests
- LED reading lights, 2 in the front and 2 in the rear
- Steering wheel: Multifunction leather steering wheel, heated, with paddle shifters
- Fatigue detection
- Non-smoking version
- Package: Ambiance Package
- Package: Winter
- Radio "Ready 2 Discover" incl. "Streaming & Internet"
- Rain sensor
- Wheels: AirStop tires 235/55 R 18, rolling resistance class A
- Drawers under the front seats
- Seat belts: Three-point automatic seat belts at the front with height adjustment and belt tensioner
- Seats: Lumbar support in the front
- Seats: Top comfort seats in the front
- Lane keeping assistant "Lane Assist"
- 12-volt socket
- Bumpers in body color
- First aid kit, warning triangle and high-visibility vest
- Green thermal insulation glazing, sides and rear



Extra equipment

- Airbag: Side airbags for the outer rear seats (including front side airbags and head airbag system)
- Anti-theft alarm system with safe locking (anti-theft alarm system with interior monitoring, backup horn and tow-away protection, central locking with safe locking, remote control and 2 remote folding keys)
- Paint finish: Solid color special paint finish
- LED matrix headlights - IQ.LIGHT (Dynamic Light Assist high beam control for LED matrix headlights - LED headlights with LED daytime running lights and cornering lights - LED taillights, dark red)
- Package: Cargo Package "Plus" (luggage net - net partition)
- Package: Cargo package including space- and weight-saving spare wheel (230V socket in the luggage compartment - on-board tools and jack - luggage compartment lighting - luggage compartment floor height-adjustable in 2 stages - space- and weight-saving spare wheel)
- Progressive steering
- Windows: Rear side windows and rear window tinted
- Seats: ergoActive front seats (ergoActive front seats height-adjustable, seat and backrest tilt adjustable, thigh support longitudinally adjustable - lumbar support front electrically adjustable and with massage function)
- Foldable towbar (electric release)
- Electrically adjustable, folding, and heated exterior mirrors, ambient lighting, passenger-side mirror lowering function
- Chassis: Adaptive chassis control DCC (including driving profile selection)
- Wirelessly heated windshield (infrared-reflective, noise-reducing)
- Navigation system "Discover Media" incl. "Streaming & Internet"
- Package: Business Premium (DSG) (App-Connect incl. App-Connect Wireless for Apple CarPlay and Android Auto - Leather multifunction steering wheel, heated, with shift paddles - Automatically heated front windscreen washer nozzles - Voice control - "Comfort" telephone interface with inductive charging function - Heated front seats)
- Package: Driver assistance package "Plus" (Driving assistant "Travel Assist", lane keeping assistant "Lane Assist" and "Emergency Assist" - parking steering assistant "Park Assist" incl. parking aid - proactive occupant protection system in conjunction with "Front Assist" - lane change assistant "Side Assist" and parking assistant - traffic sign recognition)
- Engine underbody protection including stone chip protection
- Surround view "Area View" (incl. reversing camera "Rear View")

Brief expert findings

Documents submitted	At the time of the inspection, the vehicle registration certificate Part 2 (title) was available, but the vehicle registration certificate Part 1 (document) was not. (Copy)
VIN comparison	The vehicle identification number (VIN) was read from the vehicle and its conformity with the submitted documents was confirmed by the undersigned during the inspection.
Inspection	The inspection conditions were sufficient for the assessment of the vehicle. No lifting equipment or pit was available for inspecting the vehicle. Therefore, inspection of the vehicle's underside was only possible to a limited extent.
Test drive	No test drive/shunting maneuver was carried out during the inspection of the vehicle.
Engine function test	An engine test run was performed.

Value reducing factors

No.	Component group	Description
1	Door - front left side	Door edge - Scratch(es) - Smart repair
2	Rear bumper	Rear bumper - Scratch(es) - Smart repair

Wear and tear

No.	Component group	Description
1	Vehicle glazing	Windscreen - Stone chips - No deduction
2	Bonnet	Bonnet - Stone chips - No deduction
3	Front bumper	Front bumper - Stone chips - No deduction
4	Documents	Service book (Digitaler Ausdruck) - Missing - No deduction

The vehicle shows signs of wear and tear commensurate with its age and use.



Previous damages

No.	Previous damage	Extent of damage (Net)
1	Rear, Provided by user / customer, from 3 Jul 2024	1.318,19 €
2	Side right, Provided by user / customer, from 5 Oct 2025	2.765,83 €

Order/Scope of Order

An order was placed to prepare a sales report for the described vehicle. This report includes the following:

- Description of key vehicle information
- Documentation of equipment features
(Delivery by third-party service providers)
- Documentation of damage, defects, missing parts
- Documentation of prior damage, unrepaired prior damage, repainting
- A brief visual or functional inspection of the equipment details, if possible.
(Functional testing of driver assistance systems is not included in the scope of services!)
- a photographic documentation of the vehicle

Basis for the order

This product is based on the guidelines for vehicle returns and valuations published by Alphabet Fleet GmbH. The expert makes the specific findings in each individual case objectively, within the framework of the prescribed standards, based on their own expertise.

The vehicle inspection takes place in a fully assembled, unassembled state.

Damage or defects that can only be detected during disassembly/diagnostic work or through further investigation remain within the realm of prognostic risk. An increased risk exists due to concealed defects caused by fraudulent misrepresentation and which were not identifiable by the expert.

Damage or defects resulting from normal use or wear and tear of the vehicle will be accepted in accordance with the applicable standard.

There was no explicit identification or monetary consideration of the expected features within the product.

Features which, in their nature and extent, slightly exceed normal use but do not constitute unacceptable damage, will be documented and indicated as signs of wear, if applicable.

Damage or defects that, according to the applicable standard, can no longer be attributed to normal use or wear and tear are listed under "Value Reducing Factors" in the product description.

Depending on the product specification, a monetary ID can be provided. If this takes place, the costs can be 100% d or pro rata depending on the vehicle's age and mileage.

Previous damages

According to available information previous damages were repaired at the vehicle. Traces of repairs, which allow conclusions about the area of repair, were not recognizable during the inspection.

Comments

- Der beiliegende Winterradsatz ist kein Bestandteil des Auslieferungsumfangs.



Figure 1: Diagonal front (left)



Figure 2: Diagonal front (right)



Figure 3: Diagonal rear (left)



Figure 4: Diagonal rear (right)



Figure 5: Interior - front



Figure 6: Interior - rear



Figure 7: Instrument cluster



Figure 8: Instrument panel



Figure 9: Interior 360° view



Figure 10: Cargo area

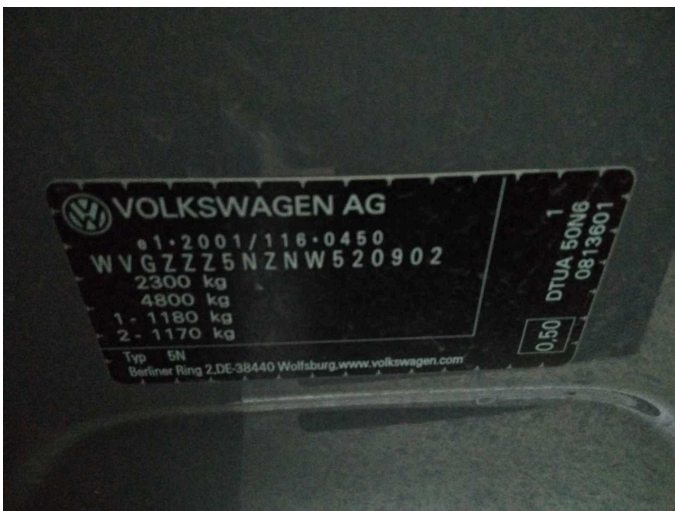


Figure 11: VIN



Figure 12: Mounted tyres

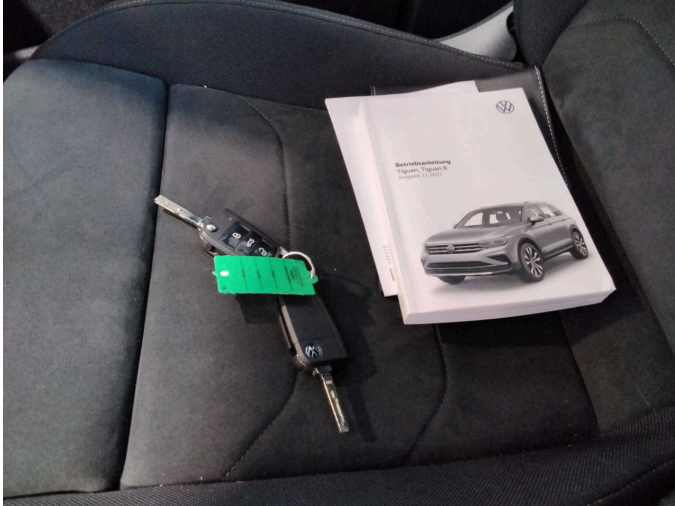


Figure 13: Documents



Figure 14: Additional tyres



Figure 15: Additional tyres

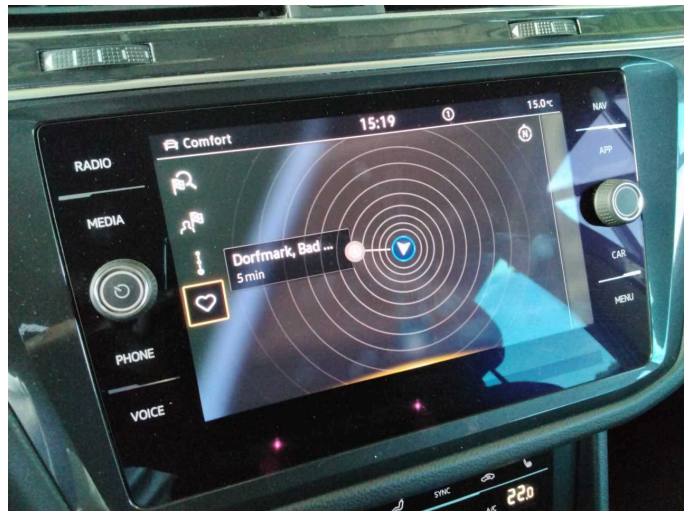


Figure 16: Navigation



Figure 17: Misc.



Figure 18: Misc.



Figure 19: Misc.



Figure 20: Misc.

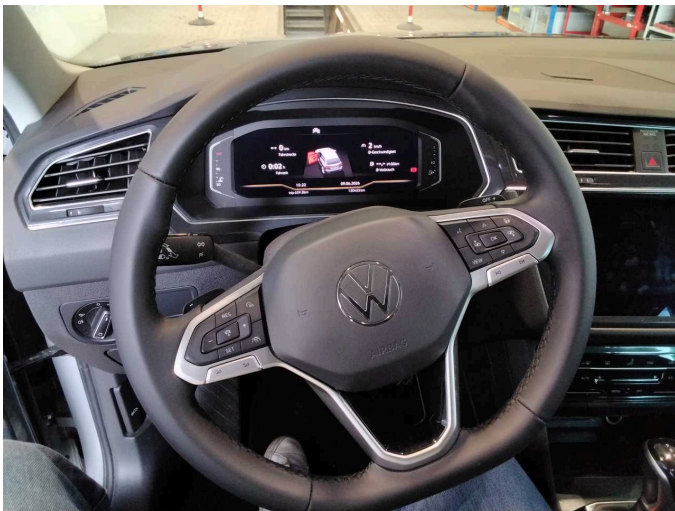


Figure 21: Misc.

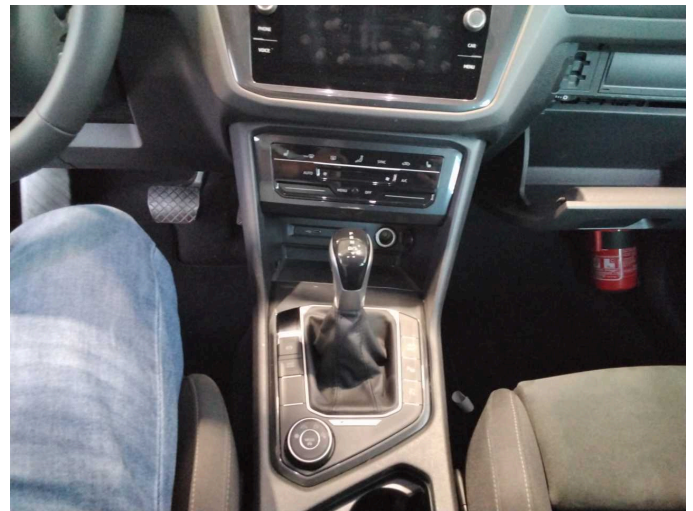


Figure 22: Misc.



Figure 23: Misc.

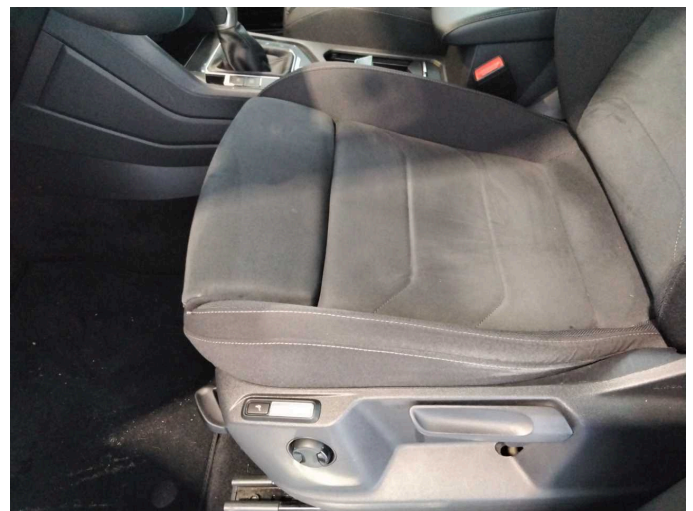


Figure 24: Misc.



Figure 25: Misc.



Figure 26: Misc.

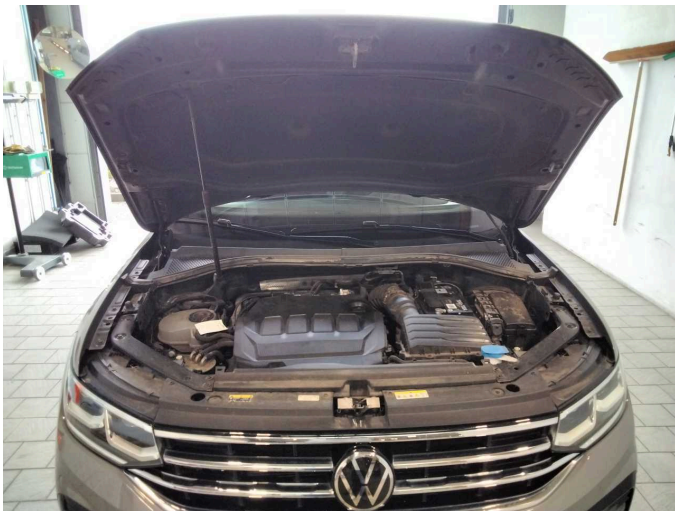


Figure 27: Misc.



Figure 28: Misc.



Figure 29: Misc.

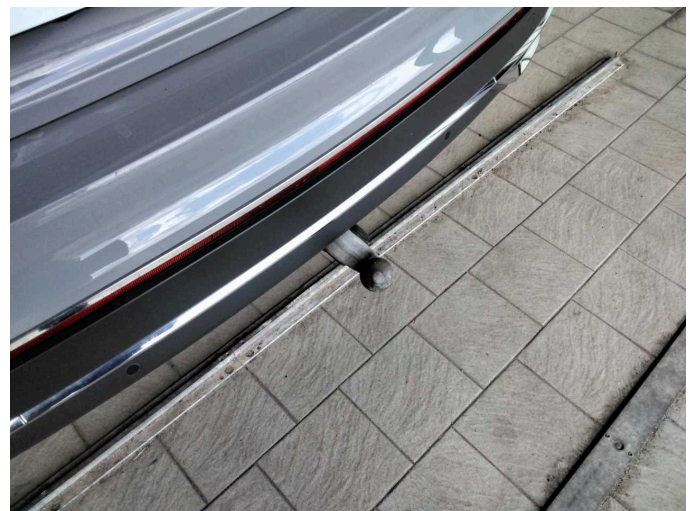


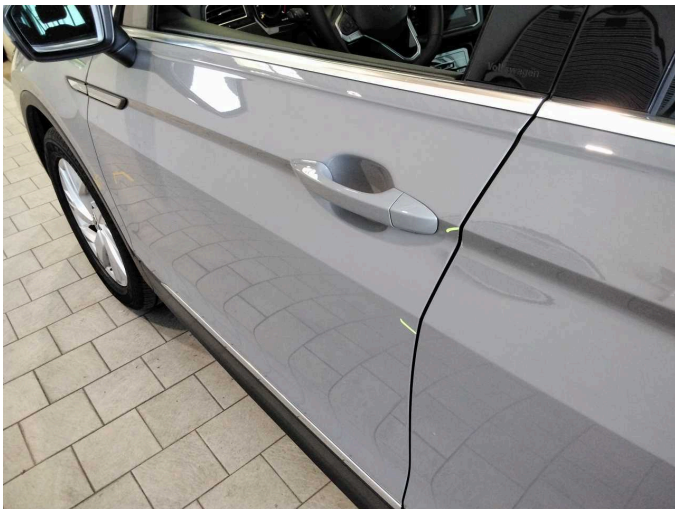
Figure 30: Misc.



Figure 31: Misc.



Figure 32: Misc.



Damage 1: Door - front left side: Door edge - Scratch(es) - Smart repair



Damage 1: Door - front left side: Door edge - Scratch(es) - Smart repair



Damage 2: Rear bumper: Rear bumper - Scratch(es) - Smart repair



Damage 2: Rear bumper: Rear bumper - Scratch(es) - Smart repair



Wear and tear 1: Vehicle glazing: Windscreen - Stone chips - No deduction



Wear and tear 2: Bonnet: Bonnet - Stone chips - No deduction



Wear and tear 3: Front bumper: Front bumper - Stone chips - No deduction



Wartungshistorie

(gemäß Auftraggeber Informationen)

Fahrgestellnummer: WVGZZZ5NZNW520902

Hersteller / Modell: VOLKSWAGEN VW Tiguan 2.0 TDI SCR 4MOTION DSG Elegance

Datum	KM-Stand	Beschreibung
23.04.2026	129.796	Reparatur Sonstiges; Systemtest/Eigendiagnose
03.12.2025	119.679	Reparatur Sonstiges; Systemtest/Eigendiagnose
26.11.2025	119.675	Batterie ern; Systemtest/Eigendiagnose
24.09.2025	114.843	Bremse Sonstiges; Bremsklötze vorne; Luftfiltereinsatz ern; Motoröl b. Wartung; Ölfilter ern; Regelwartungsdienst; Wartung Sonstiges
11.07.2025	106.023	Reparatur Sonstiges; Systemtest/Eigendiagnose
24.03.2025	97.409	AU
23.09.2024	85.583	Bremsflüssigkeit; Bremsflüssigkeit ern; Getriebeöl ern/prüfen; Kraftstofffilter ern; Motoröl b. Wartung; Ölfilter ern; Ölwechsel - Hinterachse; Regelwartungsdienst; Reparatur Sonstiges; Wartung Sonstiges
29.05.2024	71.883	Bremse Sonstiges; Bremsklötze hinten; Bremsscheiben hinten
28.09.2023	57.033	Bremse Sonstiges; Bremsklötze vorne; Bremsscheiben vorne; Motoröl b. Wartung; Ölfilter ern; Regelwartungsdienst; Wartung Sonstiges
02.12.2022	27.590	Motoröl b. Wartung; Regelwartungsdienst