

Expertise

Protocol number: 46128263
Order No. / Reference: 26528741
Inspection date: 16 Jun 2026

Manufacturer: Mercedes-Benz

Model: C 200 d T 9G-TRONIC Avantgarde

VIN: W1KAH0DB8PF080296



Vehicle details

Manufacturer / Type / Model / Equipment

Mercedes-Benz C 200 d T 9G-TRONIC Avantgarde

Vehicle Identification number	W1KAH0DB8PF080296
Mileage (Read)	134,958 km
First registration	8 May 2023
Number of holders	1
Next periodical technical inspection (Report on hand)	05/2028

Power / Engine displacement	120 kw / 1,993 ccm
------------------------------------	--------------------

Fuel type / Cylinder	Hybrid Diesel / E / 4
-----------------------------	-----------------------

Gearbox / Number of gears	Automatic / 9
----------------------------------	---------------

Type of drive	Rear drive
----------------------	------------

Type of vehicle	Station wagon
------------------------	---------------

Colour / colour code	Polarweiß
-----------------------------	-----------

Doors / Seats	5 / 5
----------------------	-------

Upholstery type	Cloth / leather combination
------------------------	-----------------------------

Colour of upholstery	Black
-----------------------------	-------

Re-import	no
------------------	----

Vehicle with smoke odor	no
--------------------------------	----

readiness to drive	Roadworthy
---------------------------	------------



Vehicle details

Maintenance booklet / proof	digital proof / complete	Next maintenance in	266 Tag(e)
Last service on / at	03/2026 at 127,607 km		
Key is / should be	2 / 2	FZG documents	ZB#2 (B) was available (copy), ZB#1 (S) was not available.
		Letter No.	GM953769
Previous damage / Accident	Detectable	Repainting	Detectable
Inspection conditions	sufficient	Lifting equipment / pit	yes
Test drive	Not performed	Engine function test	Performed
readiness to drive	Roadworthy		
Manufacturer key number/ type code number	2222 / BDF 00165		
Emission standard	EURO6;WLTP;AP;PI/CI; M, N1 I	fine dust sticker	
Permitted total weight	2,400 kg	Empty weight	

Tyres

Mounted tyres

#	Tyre size	Type of tyre	Manufacturer	Tread depth
1)	225/50 R17 98Y	Summer tyres on Light alloy	Pirelli	4mm / 4mm
2)	225/50 R17 98Y	Summer tyres on Light alloy	Pirelli	5mm / 5mm

Additional tyres

#	Tyre size	Type of tyre	Manufacturer	Tread depth
1)	225/50 R17 98V	Winter tyres on Light alloy	Pirelli	5mm / 5mm
2)	225/50 R17 98V	Winter tyres on Light alloy	Pirelli	7mm / 7mm

Legend: Tread depth information for the left tire is listed first, for the right tire it is listed second on the axle in the direction of travel.

TÜV SÜD Auto Partner GmbH
Wiesenring 2
04159 Leipzig

Inspection location
Hartmann Fleet Professionals GmbH
Industriestraße 11
36272 Niederaula



Equipment



Standard equipment

- Airbag for driver and front passenger
- Airbag: Center airbag (Additional airbag for increased front occupant protection in the event of a side impact)
- Airbag: Sidebag for driver and front passenger (combined thorax/pelvisbag)
- Airbag: Windowbag for driver and front passenger
- Ambient lighting with 64 light colors
- Left and right exterior mirrors are heated and electrically adjustable
- Brake assist, active
- Roof rails in polished aluminum
- Double cup holder at the front
- EASY-PACK tailgate (with electric operation for opening and closing)
- Electronic Stability Program (ESP) (including Anti-lock Braking System (ABS) and Traction Control System (ASR))
- Speed Limit Assistant (The Speed Limit Assistant detects and displays speed limits.)
- Rear bumper in body color (rear bumper painted in body color with centrally positioned trim panel (wing) in glossy chrome)
- KEYLESS-GO start function
- THERMATIC automatic climate control with 1 climate zone (controlled via the central display or the climate control unit in the center console) - Sensor system for detecting, for example, interior/ exterior temperature, solar radiation, humidity and dew point - Ventilation system consisting of: 3 center vents in the center area and 2 side vents, 2 ventilation openings each in the footwell for driver and front passenger - Fine dust filter for filtering dust, soot and pollen - Dew point sensor, continuous defroster vent under the windshield and 2 fixed defroster vents)
- Steering wheel: Multifunction sports steering wheel in leather (sporty steering wheel in 3-spoke design - leather finish - black grained shift paddles - control via touch panels: left: driver display, cruise control and limiter or active distance assist DISTRONIC; right: MBUX multimedia system (e.g. audio volume and track selection, telephony and navigation), touch sensitivity adjustable via central display)
- Package: Storage (storage compartment with net on the left in the load compartment - double cup holder in the center console for 2 x 750 ml - elastic tension strap on the right in the load compartment - folding box under the load floor - 1 additional bag hook on the right in the load compartment - recess including storage tray on the right in the load compartment - map pockets on the backs of the front seats - reversible mat in the boot floor)
- Package: Interior lighting package (Illuminated glove compartment - Lighting for wireless mobile interface or mobile phone storage - Lighting for the storage compartment in the center console or the double cupholders - Lighting for the storage compartment under the center console armrest - Two vanity lights in front - Two reading lights in the overhead control unit - Two reading lights in the interior mirror in conjunction with mirror parking - Two reading lights and interior light function in the rear grab handles - Lighting for the trunk or cargo area)
- Airbag: Automatic passenger airbag deactivation (The system automatically deactivates the passenger airbag as soon as it detects a rear-facing child seat or registers that the passenger seat is unoccupied. A transponder in the child seat is not necessary. If it detects that an adult is taking the seat, the airbag is automatically activated, reducing the risk of incorrect operation.)
- Basic services (breakdown management, maintenance management, accident management, telediagnosis, remote vehicle diagnostics)
- Diesel particulate filter
- DYNAMIC SELECT (consisting of driving programs: Comfort, Sport, Eco mode)
- ECO start/stop function
- Electric windows (4-way)
- Velour floor mats
- Transmission: 9-speed automatic, 9G-TRONIC
- rear window wiper
- Heated rear window
- Interior headliner fabric crystal grey
- ISOFIX child seat attachment with top tether in the rear
- Mechanical child safety lock for the rear doors
- Rear headrests (3)
- Front headrests
- Cargo area cover including EASY-PACK safety net
- LED High Performance headlights (The elements of the LED High Performance headlights: - Torch and trifunctional light guide for daytime running lights, position lights and turn signals - Multi-chamber reflector system with 4 individual reflectors each) for low beam and high beam. The elements of the rear lights in LED technology: - All light functions in full LED technology - Tail light - Brake light and parking light - Rear fog light (only on the left side) - Turn signals - Reversing light - 3rd brake light)
- Mercedes-Benz Emergency Call System (can provide a crucial time advantage in an emergency. A communication module with its own SIM card automatically triggers an emergency call upon detection of an accident, which can shorten the time until emergency services arrive. The emergency call can also be triggered manually to organize assistance.)
- Package: AVANTGARDE Exterior (radiator grille with integrated Mercedes star and a chrome-plated louvre, radiator grille frame in chrome - 43.2 cm (17") 5-spoke alloy wheels, high-gloss black paint and gloss coating, 225/50 R 17 on 7 J x 17 ET 44.5 - Dynamic front bumper with centrally positioned trim strip in high-gloss chrome and diamond-pattern air intakes in black. - AGILITY CONTROL suspension with 15 mm lowering and selective damping system. - Strip on the rear side windows in high-gloss black.)
- Upholstery: ARTICO leatherette/fabric



- Radio: MBUX (fully digital instrument display with 26 cm (10.25") color LCD display and a resolution of 1440 x 540 pixels - Bluetooth telephony / audio - WLAN hotspot)
- Radio accessory: Communication module (LTE) for using Mercedes me connect services (The communication module with a vehicle-integrated, LTE-enabled SIM card offers you added comfort and safety. It continuously connects you to your vehicle – and the vehicle to infrastructure such as the Mercedes-Benz server or the internet. This allows you to use services such as Mercedes me connect Live Traffic Information.)
- Windscreen wipers with rain sensor
- Power steering
- Seats: Rear seat backrests foldable
- Lane Keeping Assist, active
- Cruise control
- High-visibility vest for drivers
- Electronic immobilizer
- Decorative elements in diamond pattern, silver-grey

Extra equipment

- Towbar with ESP trailer stabilization
- Center console diamond pattern silver grey
- Package: Advanced Comfort Package
- Package: Assistance
- Package: High-End Business (Mirror Package: Electrically folding exterior mirrors, automatic dimming, ambient lighting - Advanced Comfort Package: Heated seats for driver/front passenger, 4-way lumbar support, seat comfort package - Parking Package: with reversing camera - Assistance Package: Blind Spot Assist - Advanced Infotainment Package: MBUX Navigation Premium, traffic sign recognition, smartphone integration, driver display - 31.2 cm (12.3"), central display - 30.2 cm (11.9") touchscreen LCD - fuel tank with largest capacity)
- Heat-insulating dark tinted glass

- Radio: Extended MBUX functions (personalization (profiles) and prediction functions - MBUX voice assistant "LINGUATRONIC" with natural language understanding - activation via Hey Mercedes - learning function of the MBUX voice assistant through connection with a cloud-based online dictionary, Mercedes me connect service free of charge for 3 years from activation - Wi-Fi hotspot - internet radio)
- Radio accessories: Digital radio (DAB)
- Radio accessories: Central display (High-resolution central display, slightly inclined towards the driver with a 24 cm (9.5") screen diagonal, with MBUX multimedia system - touch display with LCD technology)
- Tire pressure monitoring system (TPMS)
- Remote Services Plus (Communication module - Mercedes me services: remote vehicle status query, programming of auxiliary heating/ventilation, remote door locking and unlocking, sunroof/windows with remote locking and opening including ventilation remote control, personalization, vehicle location, vehicle tracking, geographic vehicle monitoring, parking service monitoring, finder function (Remote Vehicle Finder), notification when exceeding the driving speed, Send2Car function)
- Central locking with remote control

- Paint finish: Solid special paint
- Package: Advanced Infotainment Package
- Package: Advanced Light Package (DIGITAL LIGHT: -HD system with projection module (more than 1.3 million pixels per headlight) and MULTIBEAM LED background module -Adaptive Highbeam Assist Plus -ULTRA RANGE high beam with a range of more than 600 m -Topography compensation -Cornering light with roundabout and intersection function -Active curve light with predictive control -Extended fog light, city light, country road light, motorway light, motorway high beam and bad weather light)
- Package: Park
- Heat and noise insulating acoustic glass (for windshield and front doors)

Brief expert findings

Documents submitted	At the time of the inspection, the vehicle registration certificate Part 2 (title) was available, but the vehicle registration certificate Part 1 (document) was not. (Copy)
VIN comparison	The vehicle identification number (VIN) was read from the vehicle and its conformity with the submitted documents was confirmed by the undersigned during the inspection.
Inspection	The inspection conditions were sufficient for the assessment of the vehicle. Lifting equipment and/or a pit were available for examining the vehicle.
Test drive	No test drive/shunting maneuver was carried out during the inspection of the vehicle.
Engine function test	An engine test run was performed.
readiness to drive	The vehicle was roadworthy at the time of inspection.



Value reducing factors

No.	Component group	Description
1	Body	B-pillar - left side - dent(s) - Smooth repair work
2	Side panel - rear left side	Side panel - dent(s) - Smooth repair work
3	Door - rear left side	Door seal - Damaged - Replace
4	Trim / covers	Door trim - front left side - dent(s) - Loss in value
5	Front bumper	Front bumper - Scratch(es) - Paint
6	Boot lid / rear door	Boot lid (Rostpickel) - Corrosion - Paint

Previous damages

No.	Previous damage	Extent of damage (Net)
1	Side right, Provided by user / customer, from 14 Nov 2024	2.956,02 €
2	Side right, Provided by user / customer, from 13 Sept 2025	3.421,42 €
3	Rear, Side - left, Provided by user / customer, from 10 Nov 2025	4.776,58 €

Repainting

No.	Repainting
1	Boot lid / rear door, Unprofessionally carried out, Invoice of repair done Non-existent
2	Side panel - rear left side
3	Side panel - rear right side, Professionally carried out, Invoice of repair done Non-existent
4	Door - front right side, Professionally carried out, Invoice of repair done Non-existent

Paint coat thickness measurement

Boot lid / rear door	229 µm	Side panel - rear left side	525 µm
Side panel - rear right side	243 µm	Door - front right side	300 µm

Order/Scope of Order

An order was placed to prepare a sales report for the described vehicle. This report includes the following:

- Description of key vehicle information
- Documentation of equipment features
(Delivery by third-party service providers)
- Documentation of damage, defects, missing parts
- Documentation of prior damage, unrepaired prior damage, repainting
- A brief visual or functional inspection of the equipment details, if possible.
(Functional testing of driver assistance systems is not included in the scope of services!)
- a photographic documentation of the vehicle



Basis for the order

This product is based on the guidelines for vehicle returns and valuations published by Alphabet Fleet GmbH. The expert makes the specific findings in each individual case objectively, within the framework of the prescribed standards, based on their own expertise.

The vehicle inspection takes place in a fully assembled, unassembled state.

Damage or defects that can only be detected during disassembly/diagnostic work or through further investigation remain within the realm of prognostic risk. An increased risk exists due to concealed defects caused by fraudulent misrepresentation and which were not identifiable by the expert.

Damage or defects resulting from normal use or wear and tear of the vehicle will be accepted in accordance with the applicable standard.

There was no explicit identification or monetary consideration of the expected features within the product.

Features which, in their nature and extent, slightly exceed normal use but do not constitute unacceptable damage, will be documented and indicated as signs of wear, if applicable.

Damage or defects that, according to the applicable standard, can no longer be attributed to normal use or wear and tear are listed under "Value Reducing Factors" in the product description.

Depending on the product specification, a monetary ID can be provided. If this takes place, the costs can be 100% d or pro rata depending on the vehicle's age and mileage.

Previous damages

According to available information previous damages were repaired at the vehicle. Traces of repairs, which allow conclusions about the area of repair, were not recognizable during the inspection.



Figure 1: Diagonal front (left)



Figure 2: Diagonal front (right)



Figure 3: Diagonal rear (left)



Figure 4: Diagonal rear (right)



Figure 5: Interior - front



Figure 6: Interior - rear



Figure 7: Instrument cluster



Figure 8: Instrument panel

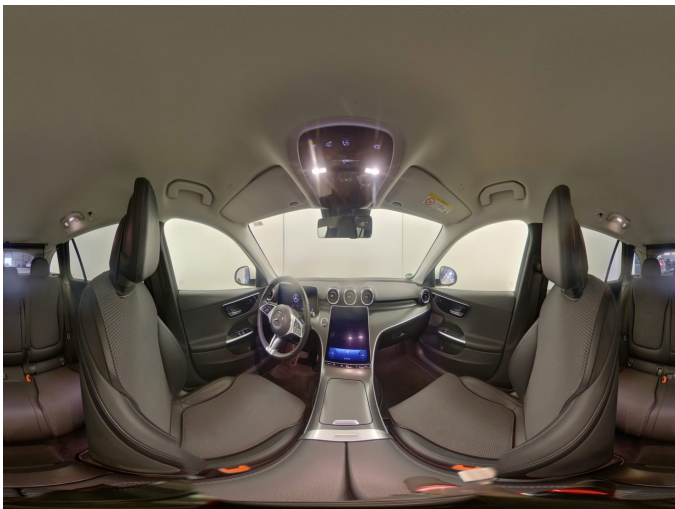


Figure 9: Interior 360° view



Figure 10: Cargo area



Figure 11: VIN



Figure 12: Mounted tyres



Figure 13: Documents



Figure 14: Additional tyres

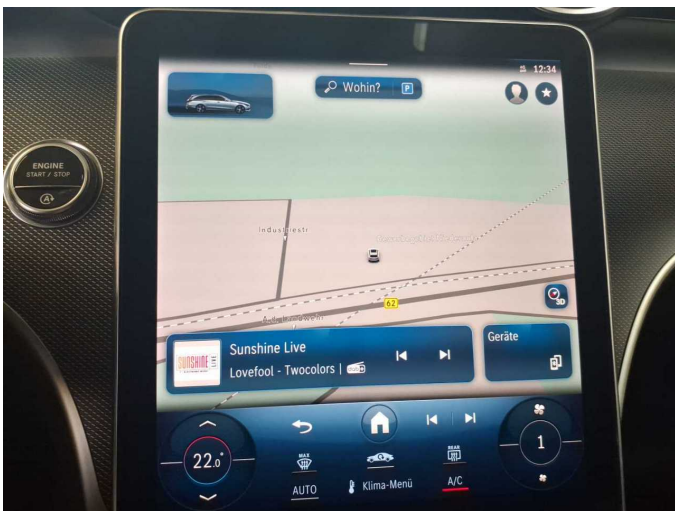


Figure 15: Navigation



Figure 16: Misc.



Figure 17: Misc.



Figure 18: Misc.



Figure 19: Misc.

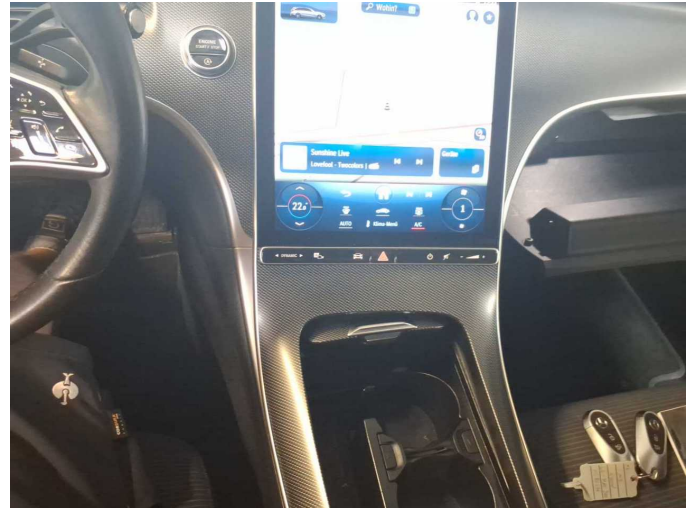


Figure 20: Misc.

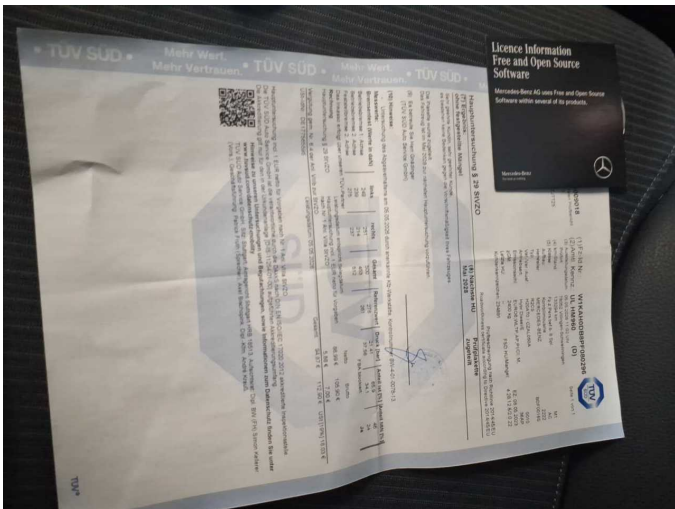


Figure 21: Misc.



Figure 22: Misc.



Figure 23: Misc.

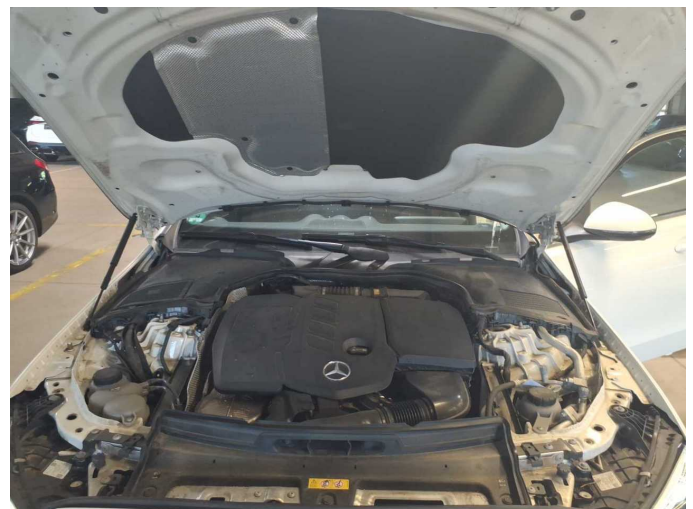


Figure 24: Misc.



Figure 25: Misc.



Figure 26: Misc.



Figure 27: Misc.



Figure 28: Misc.



Figure 29: Misc.

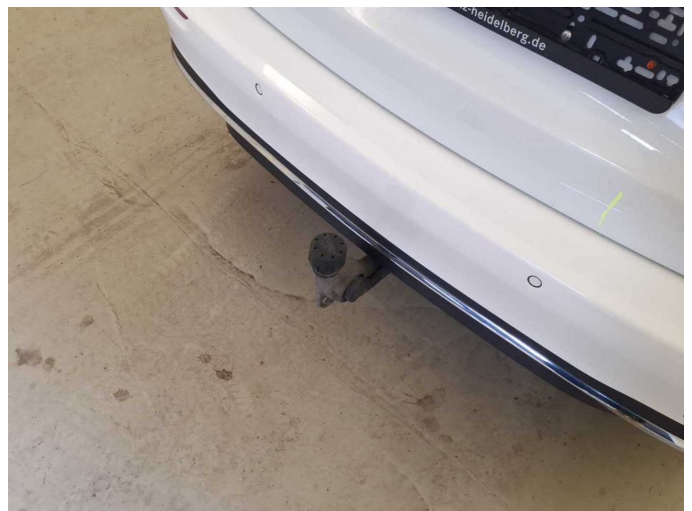


Figure 30: Misc.



Damage 1: Body: B-pillar - left side - dent(s) - Smooth repair work



Damage 1: Body: B-pillar - left side - dent(s) - Smooth repair work



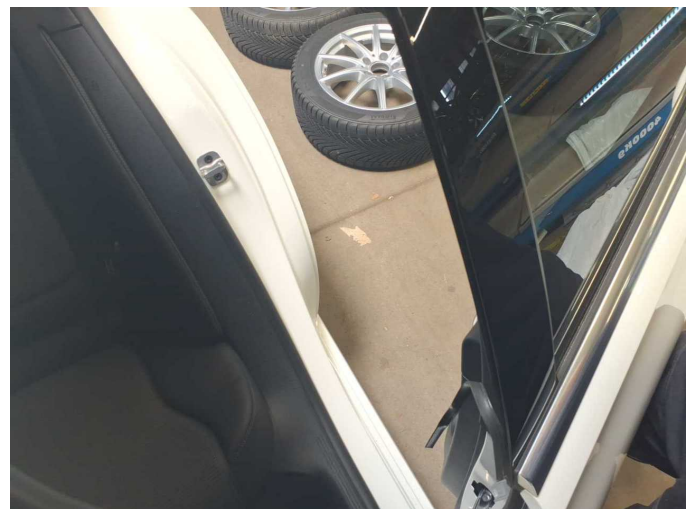
Damage 2: Side panel - rear left side: Side panel - dent(s) - Smooth repair work



Damage 2: Side panel - rear left side: Side panel - dent(s) - Smooth repair work



Damage 2: Side panel - rear left side: Side panel - dent(s) - Smooth repair work



Damage 3: Door - rear left side: Door seal - Damaged - Replace



Damage 3: Door - rear left side: Door seal - Damaged - Replace



Damage 3: Door - rear left side: Door seal - Damaged - Replace



Damage 4: Trim / covers: Door trim - front left side - dent(s) - Loss in value



Damage 4: Trim / covers: Door trim - front left side - dent(s) - Loss in value



Damage 5: Front bumper: Front bumper - Scratch(es) - Paint



Damage 5: Front bumper: Front bumper - Scratch(es) - Paint



Damage 5: Front bumper: Front bumper - Scratch(es) - Paint



Damage 5: Front bumper: Front bumper - Scratch(es) - Paint



Damage 5: Front bumper: Front bumper - Scratch(es) - Paint



Damage 5: Front bumper: Front bumper - Scratch(es) - Paint



Damage 6: Boot lid / rear door: Boot lid (Rostpickel) - Corrosion - Paint



Damage 6: Boot lid / rear door: Boot lid (Rostpickel) - Corrosion - Paint



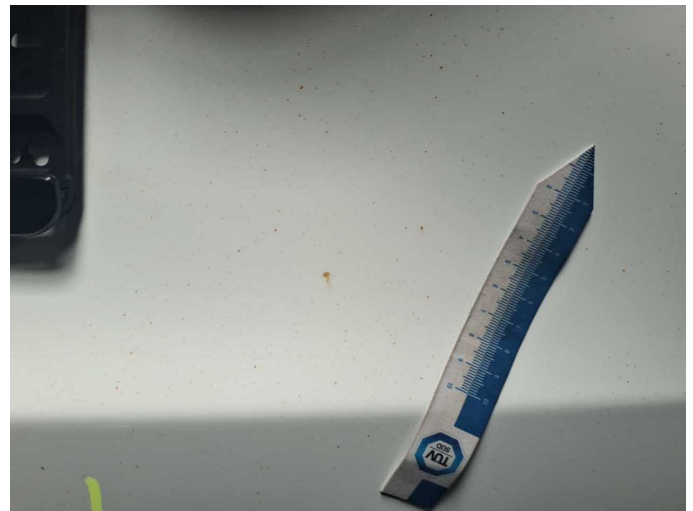
Damage 6: Boot lid / rear door: Boot lid (Rostpickel) - Corrosion - Paint



Damage 6: Boot lid / rear door: Boot lid (Rostpickel) - Corrosion - Paint



Damage 6: Boot lid / rear door: Boot lid (Rostpickel) - Corrosion - Paint



Damage 6: Boot lid / rear door: Boot lid (Rostpickel) - Corrosion - Paint



Repainting 1: Boot lid / rear door



Repainting 1: Boot lid / rear door



Repainting 1: Boot lid / rear door



Repainting 2: Side panel - rear left side



Repainting 2: Side panel - rear left side



Repainting 2: Side panel - rear left side



Repainting 3: Side panel - rear right side



Repainting 3: Side panel - rear right side



Repainting 3: Side panel - rear right side



Repainting 4: Door - front right side



Repainting 4: Door - front right side



Repainting 4: Door - front right side



Boot lid / rear door: 229 µm



Side panel - rear left side: 525 µm



Side panel - rear right side: 243 µm



Door - front right side: 300 µm



Wartungshistorie

(gemäß Auftraggeber Informationen)

Fahrgestellnummer: W1KAH0DB8PF080296

Hersteller / Modell: MERCEDES-BENZ MERCEDES-BENZ C 200 d T 9G-TRONIC
Avantgarde

Datum	KM-Stand	Beschreibung
05.05.2026	133.293	AU
06.03.2026	127.607	Regelwartungsdienst
17.09.2025	102.026	Regelwartungsdienst
13.01.2025	77.168	Regelwartungsdienst
13.05.2024	50.161	Regelwartungsdienst
01.12.2023	25.153	Regelwartungsdienst