

Expertise

Protocol number: 45302679
Order No. / Reference: 25948404
Inspection date: 30 Apr 2026

Manufacturer: Opel

Model: Astra 1.5 D Start/Stop Sports Tourer Automatik Business Edition

VIN: W0VBD8EV9L8033445



Vehicle details

Manufacturer / Type / Model / Equipment

Opel Astra 1.5 D Start/Stop Sports Tourer Automatik Business Edition

Vehicle Identification number	W0VBD8EV9L8033445
Mileage (Read)	197,845 km
First registration	2 Oct 2020
Number of holders	1

Power / Engine displacement	90 kw / 1,496 ccm
------------------------------------	-------------------

Fuel type / Cylinder	Diesel / 3
-----------------------------	------------

Gearbox / Number of gears	Automatic / 9
----------------------------------	---------------

Type of drive	Front drive
----------------------	-------------

Type of vehicle	Station wagon
------------------------	---------------

Colour / colour code	Onyxschwarz Metallic
-----------------------------	----------------------

Doors / Seats	5 / 5
----------------------	-------

Upholstery type	Cloth
------------------------	-------

Colour of upholstery	Black-Anthracite
-----------------------------	------------------

readiness to drive	Not roadworthy / not moveable
---------------------------	-------------------------------



Vehicle details

Maintenance booklet / proof	digital proof / complete	Next maintenance in	73 %
Last service on / at	06/2025 at 172,171 km		
Key is / should be	2 / 2	FZG documents	ZB#2 (B) was available (copy), ZB#1 (S) was not available.
		Letter No.	FT993109
Previous damage / Accident	Detectable	Repainting	Detectable
Inspection conditions	Conditional: Light/moisture/dirt	Lifting equipment / pit	No
Test drive	Not possible	Engine function test	Not possible
readiness to drive	Not roadworthy / not moveable		
Manufacturer key number/ type code number	1844 / ALL 00057		
Emission standard	EURO6;WLTP;AM;PI/CI; M, N1 I	fine dust sticker	
Permitted total weight	1,980 kg	Empty weight	

Tyres

Mounted tyres

#	Tyre size	Type of tyre	Manufacturer	Tread depth
1)	205/55 R16 91H	Winter tyres on Steel	Continental	5mm / 5mm
2)	205/55 R16 91H	Winter tyres on Steel	Continental	5mm / 5mm

Additional tyres

#	Tyre size	Type of tyre	Manufacturer	Tread depth
1)	205/55 R16 91V	Summer tyres on Steel rim with wheel cover	Continental	4mm / 4mm
2)	205/55 R16 91V	Summer tyres on Steel rim with wheel cover	Continental	4mm / 4mm

Replacement

Typ	Tyre size	Type of tyre	Manufacturer	Tread depth
E	205/55 R16 91V	Summer tyres on Steel	Continental	5 mm

Legend: Tread depth information for the left tire is listed first, for the right tire it is listed second on the axle in the direction of travel.



Equipment

Standard equipment

- 2 ignition keys
- Adaptive brake light
- Airbag: Chest-pelvis side airbag for driver and front passenger side
- Automatic activation of the hazard warning lights
- Hill Start Assist
- On-board computer
- Roof design line, above in black
- Decorative trim strips Antelao Sand/Polar Silver
- Tachometer
- Electric windows front and rear
- Speed controller with limiter
- Back window, heater
- Interior lighting, front and rear
- Bodywork with full galvanization of all corrosion-prone parts
- Child safety lock in the rear doors, manual
- trunk light
- Front headrests
- LED headlights
- Steering wheel: Comfort steering wheel with steering wheel remote control
- Make-up mirror in sun visor, passenger side
- Parkpilot, rear parking aid
- Upholstery: Cloth
- Radio: Multimedia radio with 7" touchscreen color display
- Tire pressure monitoring system
- Headlights in high-gloss chrome look
- Power steering
- Luggage compartment safety net
- Seats: Comfort seats, front
- 12V power outlet in the center console
- Exterior door handles, in car color
- Tie-down points 4 in the luggage compartment
- Immobiliser
- Central locking with remote control and interior switches
- Storage compartments
- Airbag for driver and passenger side
- Airbag: Head airbags, 1st and 2nd row (outer seats)
- Anti-lock braking system (ABS)
- Electrically adjustable and heated exterior mirrors for driver and passenger side
- third brake light
- black roof rails
- Diesel particulate filter (DPF)
- Electronic Stability Program Plus (ESP Plus)
- Pedestrian protection
- Transmission: 9-speed automatic transmission
- rear window wiper
- Instruments, black, with high-gloss chrome rings, 3.5" driver information display
- Air conditioning
- Rear headrests (3)
- Cargo area cover
- LED daytime running lights
- Steering column, height and reach adjustable
- Lighting equipment
- Fog light
- Pedals: Disengaging safety pedals
- Quickheat rapid heating system
- Tire repair kit
- Wheels: Steel 6 J x 15 with tires 195/65 R15
- Service interval indicator
- Seat belts: Three-point seat belts in all seats
- Visibility equipment
- Start/Stop System
- Traction Control (TC) Plus
- Ambient lighting
- Pre-installation for child seat mounting system "ISOFIX"
- Heat-insulating glazing, green tinted, and windshield

Extra equipment

- Center armrest, sliding, front (incl. storage compartments and leather steering wheel)
- Detachable trailer hitch (including trailer stability program TSP)
- Parkpilot, front and rear parking aid (with acoustic warning signal when parking forwards and backwards)
- Seats: Ergonomic active seat (certified by the Campaign for Healthy Backs (AGR) Driver's seat: - Length, height and tilt adjustable - Electropneumatic lumbar support adjustable in height and length - Extendable thigh support - Pocket on the back of the front seats, driver and front passenger)
- Wheels: Additional set of 16" steel winter wheels (SFO)
- cargo area liner
- Paint finish: Metallic
- Radio: Multimedia Navi (Navigation system with integrated memory - road map for over 30 European countries - map display in 2D and 3D - dynamic route guidance via map and/or arrow display and voice prompts - dynamic destination guidance via extended Traffic Message Channel (TMCpro))
- Rubber mats
- Steering wheel: Heated leather steering wheel and seat heating, multi-stage, driver and front passenger (including rear footwell heating)



- Wheels: Steel 6.5 J x 16 with tires 205/55 R16

- Wheels: Spare wheel, steel 6.5Jx16

Brief expert findings

Documents submitted	At the time of the inspection, the vehicle registration certificate Part 2 (title) was available, but the vehicle registration certificate Part 1 (document) was not. (Copy)
VIN comparison	The vehicle identification number (VIN) was read from the vehicle and its conformity with the submitted documents was confirmed by the undersigned during the inspection.
Inspection	A proper visual inspection of the paintwork and bodywork was only possible to a limited extent due to insufficient lighting conditions/dampness or dirt. No lifting equipment or pit was available for inspecting the vehicle. Therefore, inspection of the vehicle's underside was only possible to a limited extent.
Test drive	The conduction of a test drive with the described vehicle was impossible to do under the given conditions.
Engine function test	An engine test run could not be performed. This is due to the following reason.: Motorschaden
readiness to drive	The vehicle was not roadworthy at the time of inspection, but only capable of being towed.

Value reducing factors

No.	Component group	Description
1	Interior	Interior - Soiled - Clean
2	2nd wheel set	3 wheel covers - Scratched - Replace
3	Steering system	Steering wheel - Scratched - Smart repair
4	Sill - right side	Sill - Scratch(es) - Paint
5	Bonnet	Bonnet - Stone chips - Paint
6	Engine	Engine - Damaged - Replace

Wear and tear

No.	Component group	Description
1	Misc.	Main inspection - No evidence - No deduction
2	Braking system	Brake discs and brake pads - front - Corrosion - No deduction
3	Braking system	Brake discs and pads - rear - Corrosion - No deduction
4	Interior	Interior - Abrasion - No deduction
5	Sill - left side	Sill - Scratch(es) - No deduction

The vehicle shows signs of wear and tear commensurate with its age and use.

Previous damages

No.	Previous damage	Extent of damage (Net)
1	Side - left, Provided by user / customer, from 16 Apr 2025	724,32 €
2	Side right, Provided by user / customer, from 16 Apr 2025	903,75 €
3	Front, Provided by user / customer, from 12 Apr 2025	1.724,85 €
4	Side - left, Provided by user / customer, from 4 Nov 2021	2.152,12 €

Repainting

No.	Repainting
1	Mudguard - right side, Invoice of repair done Non-existent



No. Repainting

- 2 Side panel - rear left side, Invoice of repair done Non-existent
- 3 Door - rear left side, Invoice of repair done Non-existent
- 4 Door - front left side, Invoice of repair done Non-existent

Paint coat thickness measurement

Mudguard - right side	269 µm	Side panel - rear left side	146 µm
Door - rear left side	140 µm	Door - front left side	151 µm

Order/Scope of Order

An order was placed to prepare a sales report for the described vehicle. This report includes the following:

- Description of key vehicle information
- Documentation of equipment features
(*Delivery by third-party service providers*)
- Documentation of damage, defects, missing parts
- Documentation of prior damage, unrepaired prior damage, repainting
- A brief visual or functional inspection of the equipment details, if possible.
(*Functional testing of driver assistance systems is not included in the scope of services!*)
- a photographic documentation of the vehicle

Basis for the order

This product is based on the guidelines for vehicle returns and valuations published by Alphabet Fleet GmbH. The expert makes the specific findings in each individual case objectively, within the framework of the prescribed standards, based on their own expertise.

The vehicle inspection takes place in a fully assembled, unassembled state.

Damage or defects that can only be detected during disassembly/diagnostic work or through further investigation remain within the realm of prognostic risk. An increased risk exists due to concealed defects caused by fraudulent misrepresentation and which were not identifiable by the expert.

Damage or defects resulting from normal use or wear and tear of the vehicle will be accepted in accordance with the applicable standard.

There was no explicit identification or monetary consideration of the expected features within the product.

Features which, in their nature and extent, slightly exceed normal use but do not constitute unacceptable damage, will be documented and indicated as signs of wear, if applicable.

Damage or defects that, according to the applicable standard, can no longer be attributed to normal use or wear and tear are listed under "Value Reducing Factors" in the product description.

Depending on the product specification, a monetary ID can be provided. If this takes place, the costs can be 100% d or pro rata depending on the vehicle's age and mileage.

Previous damages

According to available information previous damages were repaired at the vehicle. Traces of repairs, which allow conclusions about the area of repair, were not recognizable during the inspection.

Comments

Unterbodenbesichtigung nicht möglich-Mehrkosten können entstehen.

Elektrische Verbraucher konnten nicht getestet werden- Mehrkosten möglich



Figure 1: Diagonal front (left)



Figure 2: Diagonal front (right)



Figure 3: Diagonal rear (left)



Figure 4: Diagonal rear (right)



Figure 5: Interior - front



Figure 6: Interior - rear



Figure 7: Instrument cluster



Figure 8: Instrument panel



Figure 9: Interior 360° view



Figure 10: Cargo area

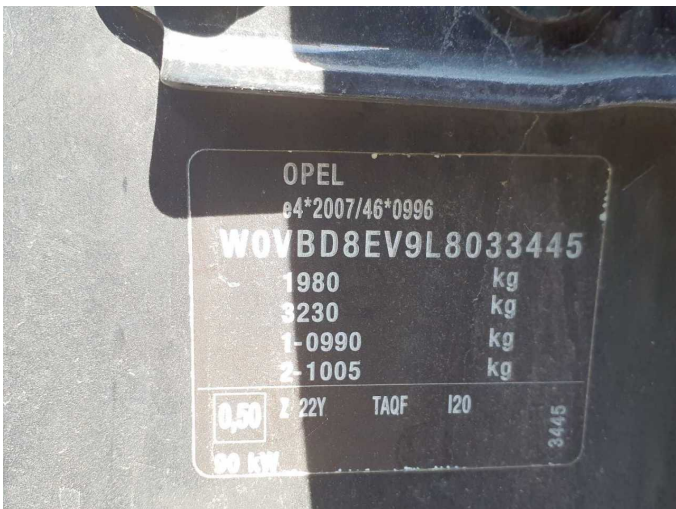


Figure 11: VIN



Figure 12: Mounted tyres



Figure 13: Documents



Figure 14: Additional tyres



Figure 15: Additional tyres

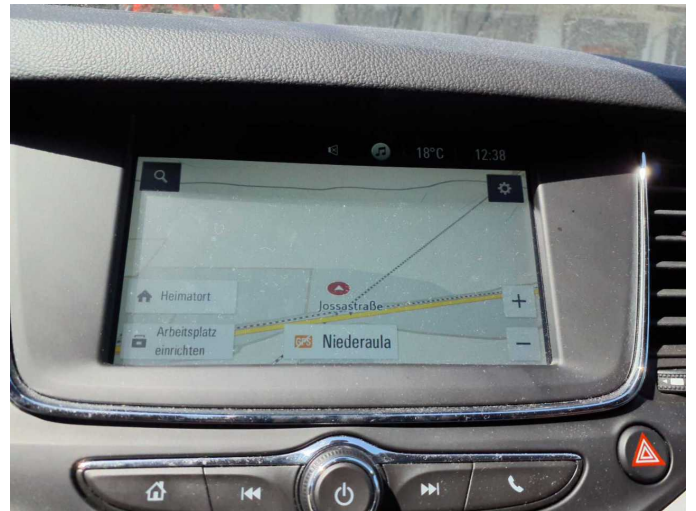


Figure 16: Navigation



Figure 17: Misc.

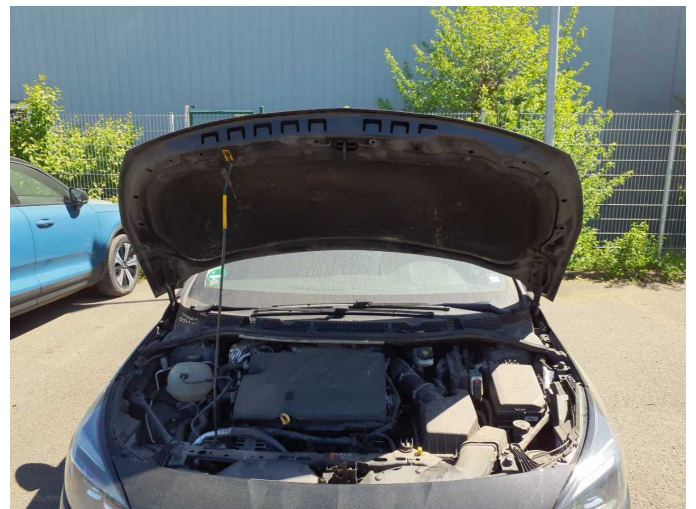


Figure 18: Misc.



Figure 19: Misc.



Figure 20: Misc.



Figure 21: Misc.



Figure 22: Misc.



Figure 23: Misc.



Figure 24: Misc.



Figure 25: Misc.



Figure 26: Misc.



Figure 27: Misc.

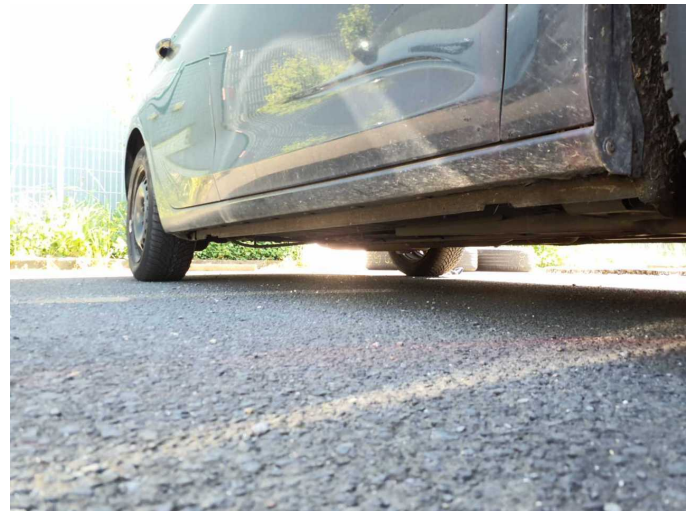


Figure 28: Misc.



Figure 29: Misc.

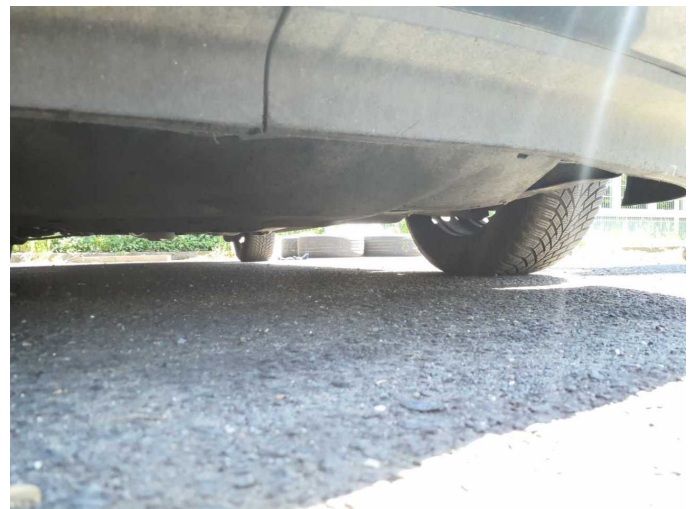


Figure 30: Misc.



Figure 31: Misc.



Figure 32: Misc.

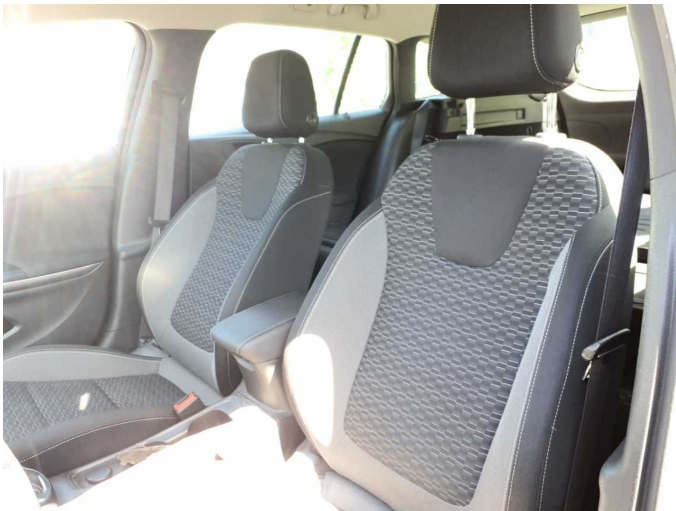
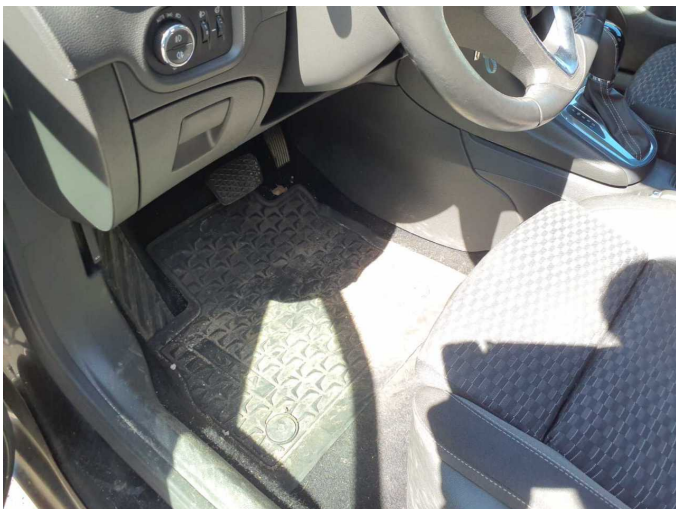


Figure 33: Misc.



Figure 34: Misc.



Damage 1: Interior: Interior - Soiled - Clean



Damage 1: Interior: Interior - Soiled - Clean



Damage 1: Interior: Interior - Soiled - Clean



Damage 2: 2nd wheel set: 3 wheel covers - Scratched - Replace



Damage 2: 2nd wheel set: 3 wheel covers - Scratched - Replace



Damage 2: 2nd wheel set: 3 wheel covers - Scratched - Replace



Damage 2: 2nd wheel set: 3 wheel covers - Scratched - Replace



Damage 2: 2nd wheel set: 3 wheel covers - Scratched - Replace



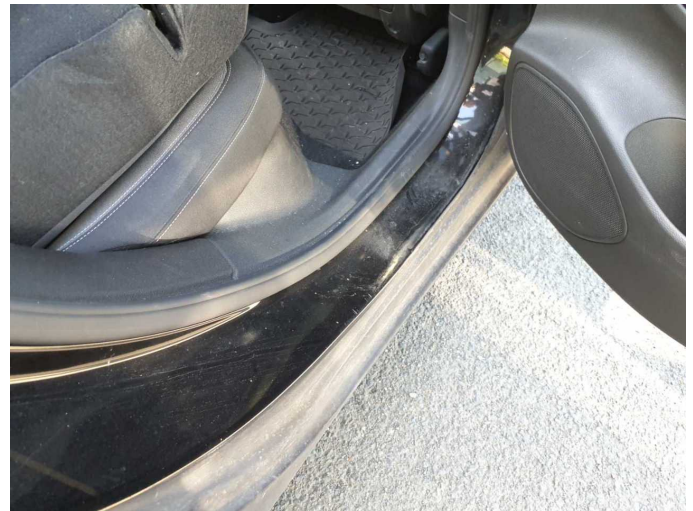
Damage 2: 2nd wheel set: 3 wheel covers - Scratched - Replace



Damage 2: 2nd wheel set: 3 wheel covers - Scratched - Replace



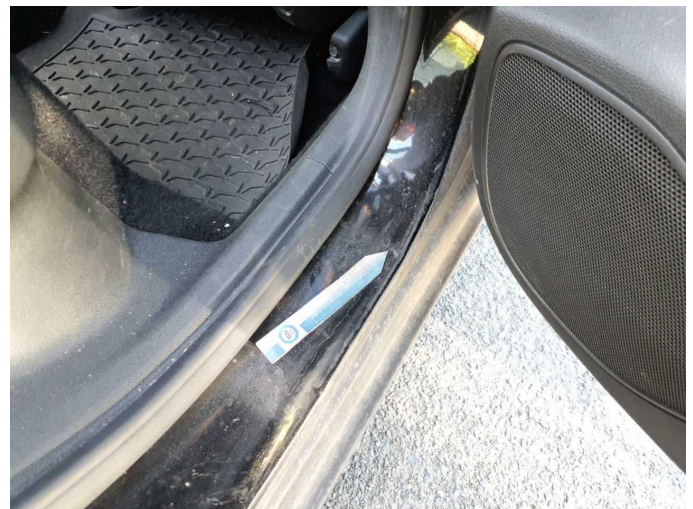
Damage 3: Steering system: Steering wheel - Scratched - Smart repair



Damage 4: Sill - right side: Sill - Scratch(es) - Paint



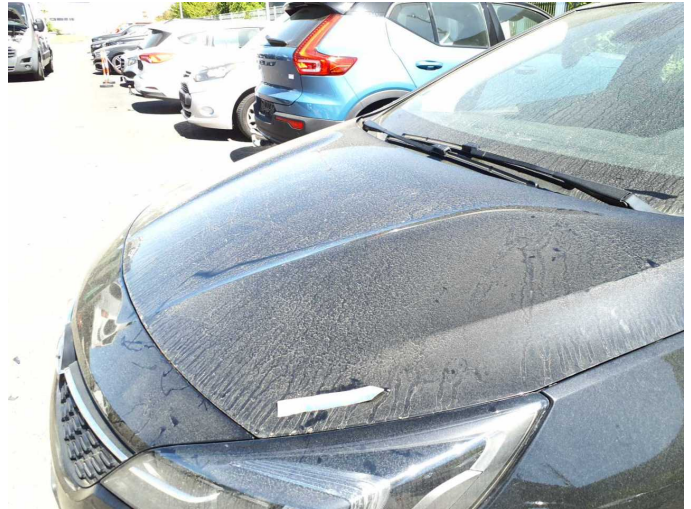
Damage 4: Sill - right side: Sill - Scratch(es) - Paint



Damage 4: Sill - right side: Sill - Scratch(es) - Paint



Damage 4: Sill - right side: Sill - Scratch(es) - Paint



Damage 5: Bonnet: Bonnet - Stone chips - Paint



Damage 5: Bonnet: Bonnet - Stone chips - Paint



Damage 5: Bonnet: Bonnet - Stone chips - Paint



Damage 5: Bonnet: Bonnet - Stone chips - Paint



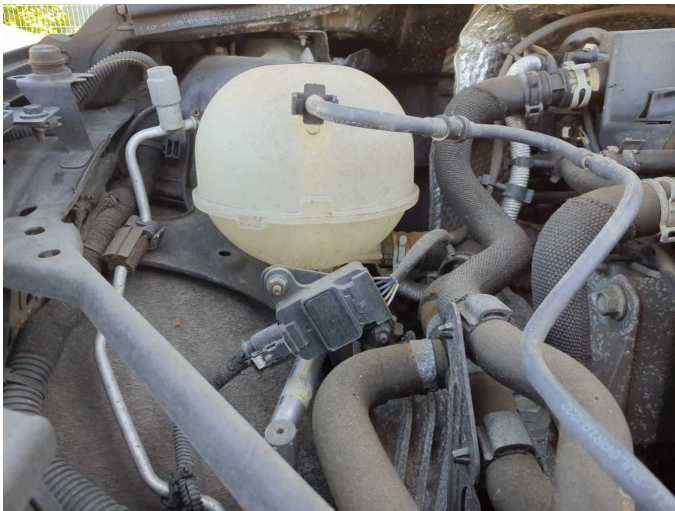
Damage 5: Bonnet: Bonnet - Stone chips - Paint



Damage 6: Engine: Engine - Damaged - Replace



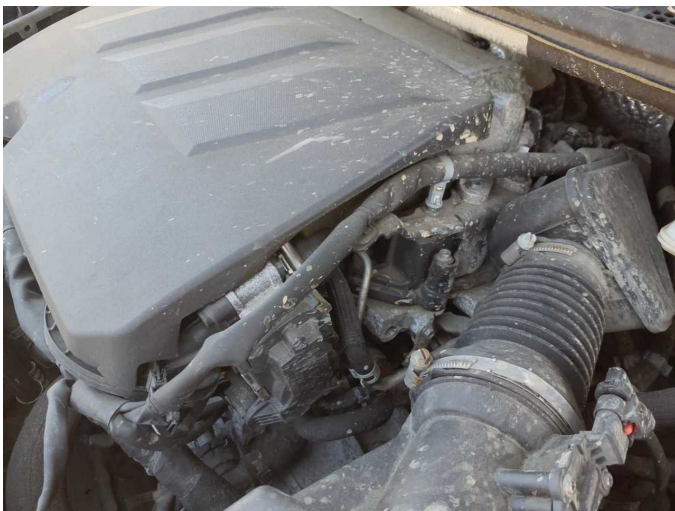
Damage 6: Engine: Engine - Damaged - Replace



Damage 6: Engine: Engine - Damaged - Replace



Damage 6: Engine: Engine - Damaged - Replace



Damage 6: Engine: Engine - Damaged - Replace



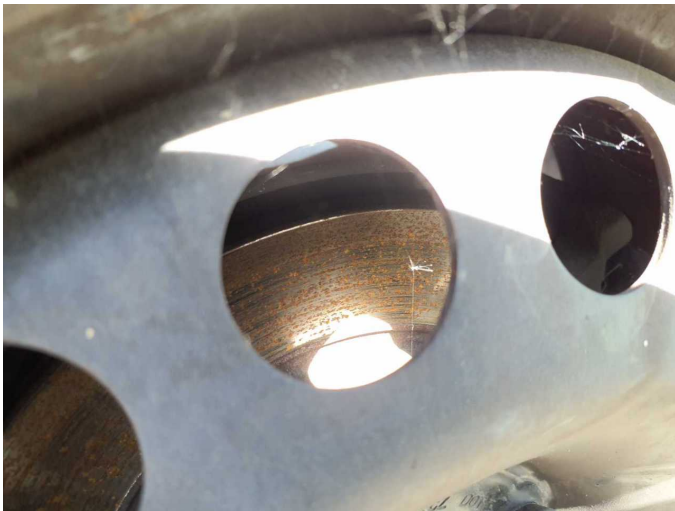
Wear and tear 2: Braking system: Brake discs and brake pads - front - Corrosion - No deduction



Wear and tear 2: Braking system: Brake discs and brake pads - front - Corrosion - No deduction



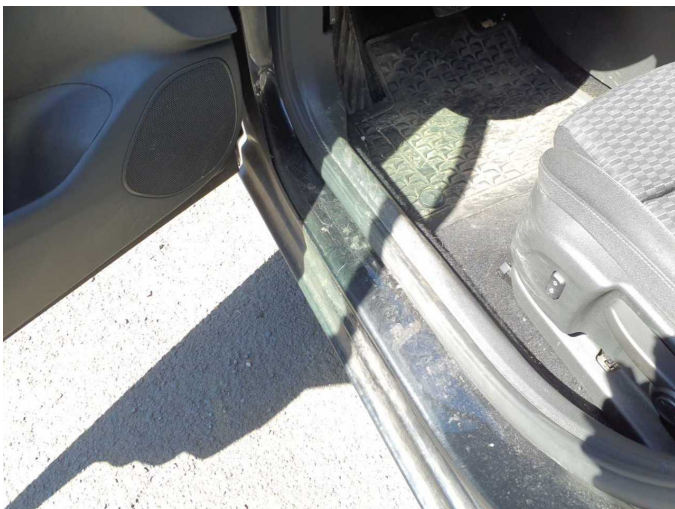
Wear and tear 3: Braking system: Brake discs and pads - rear - Corrosion - No deduction



Wear and tear 3: Braking system: Brake discs and pads - rear - Corrosion - No deduction



Wear and tear 4: Interior: Interior - Abrasion - No deduction



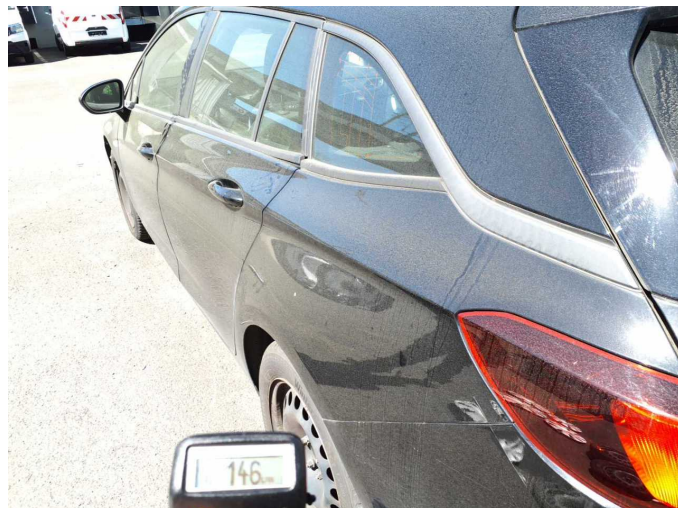
Wear and tear 5: Sill - left side: Sill - Scratch(es) - No deduction



Wear and tear 5: Sill - left side: Sill - Scratch(es) - No deduction



Repainting 1: Mudguard - right side



Repainting 2: Side panel - rear left side



Repainting 3: Door - rear left side



Repainting 4: Door - front left side



Wartungshistorie

(gemäß Auftraggeber Informationen)

Fahrgestellnummer: W0VBD8EV9L8033445
Hersteller / Modell: OPEL OPEL Astra 1.5 D Start/Stop Sports Tourer Automatik Business Edition

Datum	KM-Stand	Beschreibung
06.02.2026	178.454	Ölfilter ern; Systemtest/Eigendiagnose
24.07.2025	178.454	Reparatur Sonstiges
13.06.2025	172.171	Keilrippenriemen; Motoröl b. Wartung; Ölfilter ern; Regelwartungsdienst; Wartung Sonstiges
10.01.2025	149.119	Motoröl b. Wartung; Ölwechsel
16.09.2024	126.591	Bremse Sonstiges; Bremsflüssigkeit; Bremsflüssigkeit ern; Bremsscheiben + Klötze h; Bremsscheiben + Klötze v; Bremsscheiben hinten; Bremsscheiben vorne; Kraftstofffilter ern; Luftfiltereinsatz ern; Motoröl b. Wartung; Ölfilter ern; Regelwartungsdienst; Wartung Sonstiges
14.02.2024	97.504	Motoröl b. Wartung; Ölfilter ern; Ölwechsel; Wartung Sonstiges
29.09.2023	85.585	AU
18.08.2023	82.343	Motoröl b. Wartung; Ölfilter ern; Regelwartungsdienst; Wartung Sonstiges
20.03.2023	67.904	Motoröl b. Wartung; Ölfilter ern; Ölwechsel; Wartung Sonstiges
29.08.2022	54.246	Bremsflüssigkeit; Bremsflüssigkeit ern; Kraftstofffilter ern; Luftfiltereinsatz ern; Motoröl b. Wartung; Ölfilter ern; Regelwartungsdienst; Wartung Sonstiges
04.04.2022	46.578	Bremsinspektion vo + hi; Bremse Sonstiges; Bremsklötze hinten; Bremsklötze vorne; Wartung Sonstiges
15.10.2021	30.511	Kleine Inspektion; Motoröl b. Wartung; Ölfilter ern; Wartung Sonstiges