

# MACDAM

## Peugeot 2008 '19

### Vehicle information

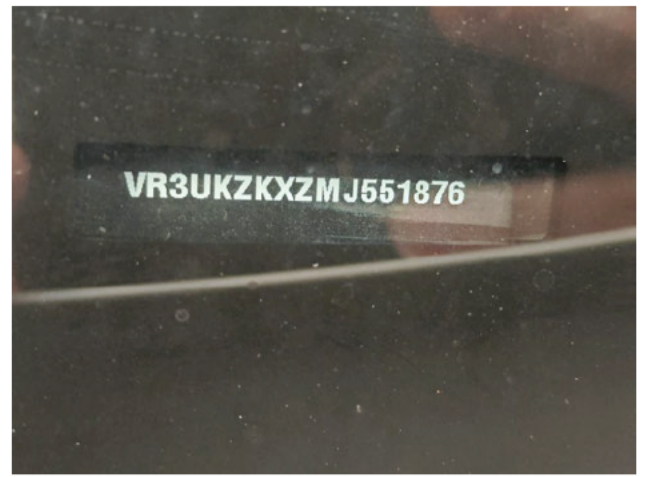
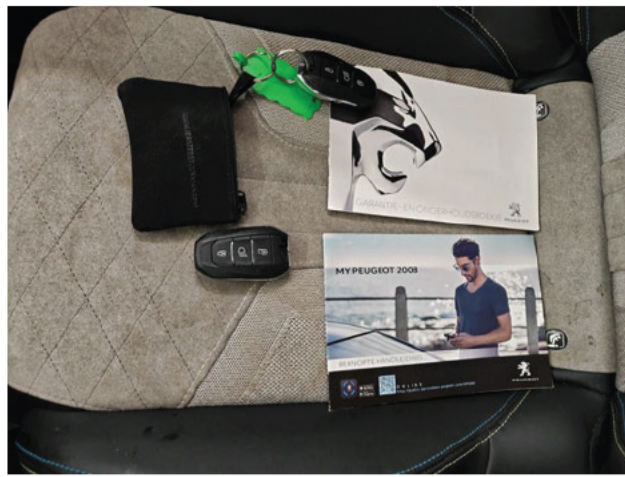
Make:	<b>Peugeot</b>	License:	
Gearbox:	<b>Automatic</b>	Body color:	
Model:	<b>2008 '19</b>	VIN:	<b>VR3UKZKXZMJ551876</b>
Fuel type:	<b>Electric</b>	Power:	<b>100 kW</b>
Version:	<b>2008 EV GT Pack 50kWh</b>	First registration	<b>09/06/2021</b>
Mileage:	<b>115761 km</b>	N° of doors:	

### Damage summary

Front	2
Left	3
Rear	2
Right	4
Roof & others	1

### Commercial pictures





**Batterijcertificaat**  
 Datum van diagnose: 16/06/2026

91,19%  
 Status van de gezondheid (SOH)\*

**Peugeot e 2008**  
 VIN : VR3UKZKXZMJ551876  
 Kilometerstand : 115.760 km

\*SOH berekend op basis van fabrieksgegevens, informatie om rekening mee te houden voor de fabrieksgarantie

Meer weten over: [www.get-moba.com](http://www.get-moba.com)

CARA  
 American Battery Check



## Options according to the inspector

Central consol F	Yes	GPS	Yes	Headlights Xenon/LED/Laser	Yes
Panoramic roof	Yes	Radio multimedia	Yes	Sun Roof electric	Yes
Telephone equipment	Yes				

## Damages

### Alloy rim FR

Rust  
Repair and paint (complete)  
Right



### Alloy rim RL

Rust  
Repair and paint (complete)  
Left



### Alloy rim RR

Rust  
Repair and paint (complete)  
Right



### Bonnet

Chemical polution  
Polish  
Front



**Bumper F**  
Scratch(es)  
Repair and paint (complete)  
Front



**Bumper moulding R**  
Scratch(es)  
Replace and paint  
Rear



**Charging cable (normal)**  
Missing  
Replace  
Rear



**Door RL**  
Bad repair  
Repair and paint (complete)  
Left



**Door RR**  
Bad repair  
Repair and paint (complete)  
Right



**Roof**  
Chemical polution  
Repair and paint (complete)  
Roof & others



**Wing RL**  
Bad repair  
Repair and paint (complete)  
Left



**Wing RR**  
Bad repair  
Repair and paint (complete)  
Right



## Tyres

### Front Left

Summer

225/50/18/95/V

Michelin

4.8 mm

### Front Right

Summer

225/50/18/95/V

Michelin

4.3 mm

### Rear Left

Summer

225/50/18/95/V

Michelin

3.8 mm

### Rear Right

Summer

225/50/18/95/V

Michelin

3.7 mm

## Checks

Certificate of Conformity	<b>No</b>	CO2 Emission	<b>0</b>
Digital maintenance	<b>Yes</b>	GPS storage	<b>Yes</b>
GPS storage	<b>HD</b>	Luggage cover	<b>Yes</b>
Number head rests	<b>5</b>	Number of charging cables (rapid charge)	<b>1</b>
Number of keys total	<b>2</b>	Service book	<b>Yes</b>
User's manual	<b>Yes</b>		

### Information on the content and the scope of the inspection report:

- The assessment is based on the sales standards specified by the customer.
- Acceptable usage damages according to the sales standards are not always documented in this status report.
- The specified repair methods and/or resulting repair times have been determined, taking into account modern industrial repair methods.
- The purchasing dealer should assess individual repair costs.
- The inspection was carried out in a non disassembly condition. Macadam cannot be held responsible for any missing information. For further information, please contact the seller.