

## Expertise

Protocol number: 45969738  
Order No. / Reference: 26511083  
Inspection date: 16 Jun 2026

Manufacturer: Peugeot

Model: 5008 BlueHDi 130 EAT8 Allure Pack

VIN: VF3MCHZUPL071892



### Vehicle details

#### Manufacturer / Type / Model / Equipment

Peugeot 5008 BlueHDi 130 EAT8 Allure Pack

**Vehicle Identification number** VF3MCHZUPL071892

**Mileage (Read)** 55,428 km

**First registration** 14 May 2024

**Number of holders** 1

**Next periodical technical inspection** 05/2027

(Report not on hand)

**Power / Engine displacement** 96 kw / 1,499 ccm

**Fuel type / Cylinder** Diesel / 4

**Gearbox / Number of gears** Automatic / 8

**Type of drive** Front drive

**Type of vehicle** SUV

**Colour / colour code** Perlmutter Weiß

**Doors / Seats** 5 / 5

**Upholstery type** Cloth / leather combination

**Colour of upholstery** Black-Anthrax

**Re-import** no

**readiness to drive** Roadworthy



Vehicle details			
<b>Maintenance booklet / proof</b>	digital proof / complete	<b>Next maintenance in</b>	6 Monat(e)
<b>Last service on / at</b>	01/2026 at 49,858 km		
<b>Key is / should be</b>	2 / 2	<b>FZG documents</b>	ZB#2 (B) was available (copy), ZB#1 (S) was not available.
		<b>Letter No.</b>	GJ792861
<b>Previous damage / Accident</b>	None detectable	<b>Repainting</b>	None detectable
<b>Inspection conditions</b>	sufficient	<b>Lifting equipment / pit</b>	yes
<b>Test drive</b>	Not performed	<b>Engine function test</b>	Performed
<b>readiness to drive</b>	Roadworthy		
<b>Manufacturer key number/ type code number</b>	3003 / AZJ 00300		
<b>Emission standard</b>	EURO6;WLTP;EA;PI/CI;M, N1, N2	<b>fine dust sticker</b>	
<b>Permitted total weight</b>	2,230 kg	<b>Empty weight</b>	

## Tyres

Mounted tyres				
#	Tyre size	Type of tyre	Manufacturer	Tread depth
1)	225/55 R18 102V	Summer tyres on Light alloy	Michelin	5mm / 5mm
2)	225/55 R18 102V	Summer tyres on Light alloy	Michelin	5mm / 5mm
Replacement				
Typ	Tyre size	Type of tyre	Manufacturer	Tread depth
	Tirefit	Expiration date 12/2029		

**Legend: Tread depth information for the left tire is listed first, for the right tire it is listed second on the axle in the direction of travel.**



## Equipment

### Standard equipment

- ABS (Anti-lock Braking System)
- Airbag for driver and front passenger
- Airbag: Curtain airbags front and rear
- Electrically folding exterior mirrors with LED approach lighting
- Exterior mirrors in Perla Nera Black
- Trim panel between the taillights in high-gloss black
- third brake light
- Chrome trim strips above the side windows
- Aluminum roof rails
- Decorative inlays "Spray" with carbon look for door panels and dashboard
- Digital instrument cluster with high-resolution 12.3" screen, adjustable and customizable
- Rear parking aid, acoustic and visual
- Driving mode selector (Normal, ECO and Sport)
- Misfueling protection
- High beam assist
- Follow-me-home function (automatic)
- Cruise control system with speed limiter
- Cup holder in the center console
- Illuminated glove compartment
- rear window wiper
- Keyless system
- Automatic climate control (2-zone), with activated carbon filter
- Paint finish: Artense Silver
- White LED lighting in the front footwell
- LED daytime running lights and LED turn signals at the front
- light sensor
- Air vents with satin chrome trim
- Front center armrest, two-piece, with storage compartment, illuminated and climate-controlled
- rear fog lights
- Emergency brake assist
- Peugeot Connect Box
- Wheel arch liners in black
- Radio: RCC audio system
- Radio accessories: Digital radio reception DAB+
- Tire pressure monitoring system
- Wheels: Tire repair kit (compressor + tire sealant spray)
- paddle shifters on the steering wheel
- Side windows in the second row and rear window are more heavily tinted.
- Seats: 3 separate individual seats in row 2
- Seats: Driver's seat height adjustable
- Socket (3) 12 Volt
- Traffic sign recognition
- Immobiliser
- Active Safety Brake Plus
- Airbag: Front and rear side airbags
- Active Blind Spot Assist
- Electrically adjustable and heated exterior mirrors with integrated LED turn signals
- Hill start assist
- On-board computer
- Chrome trim strips on the lower part of the doors
- Black headliner
- Ceiling light - LED at the front, in row 2 and in row 3, 2 LED reading lights at the front, in row 2 and in row 3
- Decorative trim on the dashboard and door panels in satin chrome
- EBV (Electronic Brakeforce Distribution)
- ESP (Electronic Stability Program) with ASR (Anti-Slip Regulation)
- Electric windows front and rear
- electric parking brake
- Front collision warning
- Transmission: 8-speed automatic transmission EAT8
- Seat belts: 3-point safety belts
- Heated rear window
- Interior mirror automatically dimming
- Child safety locks on the rear doors
- Front headrests (2)
- Rear headrests (3)
- Chrome-plated loading sill protector
- LED headlights (Eco)
- Steering wheel: Multifunction leather steering wheel
- Steering wheel: small multifunction steering wheel, flattened at the top and bottom
- makeup mirror
- Fatigue warning system with fatigue detection
- Navigation system: 3D navigation system NAC (Active Pack)
- Particulate filter: FAP diesel particulate filter
- Upholstery: Fabric/faux leather "Colyn" in black with decorative stitching in mint
- Radio: Mirror Screen
- Rain sensor
- Wheels: 18" "Detroit" alloy wheels, two-tone with grey
- Reversing camera with 180° surround view
- Keyless start system
- Electric power steering
- Seats: 2 additional seats for the 3rd row
- Seats: Passenger seat height adjustable
- Lane keeping assist with steering intervention
- Stop&Start system
- Tie-down points in the trunk (4 pieces)
- Central locking system, activatable from inside via remote control



### Extra equipment

- Alarm system (including all-round, interior, towing protection and safe locking)
- Luggage compartment net
- Sensor-controlled tailgate (Allure Pack) (Black Diamond roof)
- Seats: Without 2 additional seats for the 3rd row.
- Adaptive Cruise Control (ACC) with Stop & Go function including lane positioning assistant (including front parking aid and blind spot assist)
- Paint finish: Special paint finish "Pearl White"
- Wheels: Spare wheel well
- Seats: Heated front seats (adjustable in 3 stages)

### Brief expert findings

Documents submitted	At the time of the inspection, the vehicle registration certificate Part 2 (title) was available, but the vehicle registration certificate Part 1 (document) was not. (Copy)
VIN comparison	The vehicle identification number (VIN) was read from the vehicle and its conformity with the submitted documents was confirmed by the undersigned during the inspection.
Inspection	The inspection conditions were sufficient for the assessment of the vehicle. Lifting equipment and/or a pit were available for examining the vehicle.
Test drive	No test drive/shunting maneuver was carried out during the inspection of the vehicle.
Engine function test	An engine test run was performed.
readiness to drive	The vehicle was roadworthy at the time of inspection.

### Value reducing factors

No.	Component group	Description
1	Engine	Engine - Leaking - Diagnosed and repair if necessary

### Wear and tear

No.	Component group	Description
1	Front bumper	Front bumper - Stone chips - No deduction
2	Bonnet	Bonnet - Stone chips - No deduction
3	Vehicle glazing	Windscreen - Stone chips - No deduction

The vehicle shows signs of wear and tear commensurate with its age and use.

### Order/Scope of Order

An order was placed to prepare a sales report for the described vehicle. This report includes the following:

- Description of key vehicle information
- Documentation of equipment features  
(*Delivery by third-party service providers*)
- Documentation of damage, defects, missing parts
- Documentation of prior damage, unrepaired prior damage, repainting
- A brief visual or functional inspection of the equipment details, if possible.  
(*Functional testing of driver assistance systems is not included in the scope of services!*)
- a photographic documentation of the vehicle



## Basis for the order

This product is based on the guidelines for vehicle returns and valuations published by Alphabet Fleet GmbH. The expert makes the specific findings in each individual case objectively, within the framework of the prescribed standards, based on their own expertise.

The vehicle inspection takes place in a fully assembled, unassembled state.

Damage or defects that can only be detected during disassembly/diagnostic work or through further investigation remain within the realm of prognostic risk. An increased risk exists due to concealed defects caused by fraudulent misrepresentation and which were not identifiable by the expert.

Damage or defects resulting from normal use or wear and tear of the vehicle will be accepted in accordance with the applicable standard.

There was no explicit identification or monetary consideration of the expected features within the product.

Features which, in their nature and extent, slightly exceed normal use but do not constitute unacceptable damage, will be documented and indicated as signs of wear, if applicable.

Damage or defects that, according to the applicable standard, can no longer be attributed to normal use or wear and tear are listed under "Value Reducing Factors" in the product description.

Depending on the product specification, a monetary ID can be provided. If this takes place, the costs can be 100% d or pro rata depending on the vehicle's age and mileage.

## Previous damages

No apparent prior damage that had been repaired could be found on the vehicle.



Figure 1: Diagonal front (left)



Figure 2: Diagonal front (right)



Figure 3: Diagonal rear (left)



Figure 4: Diagonal rear (right)

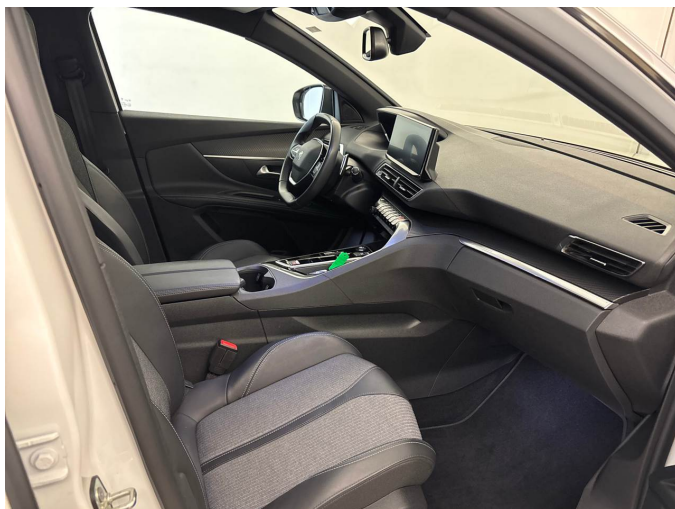


Figure 5: Interior - front

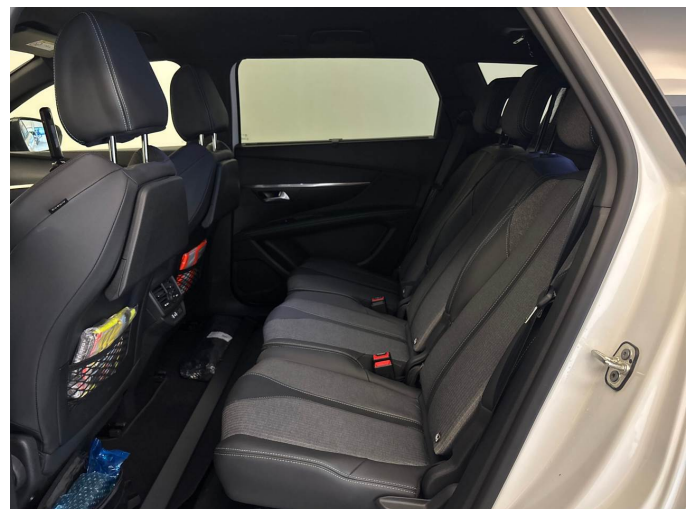


Figure 6: Interior - rear



Figure 7: Instrument cluster



Figure 8: Instrument panel



Figure 9: Interior 360° view



Figure 10: Cargo area

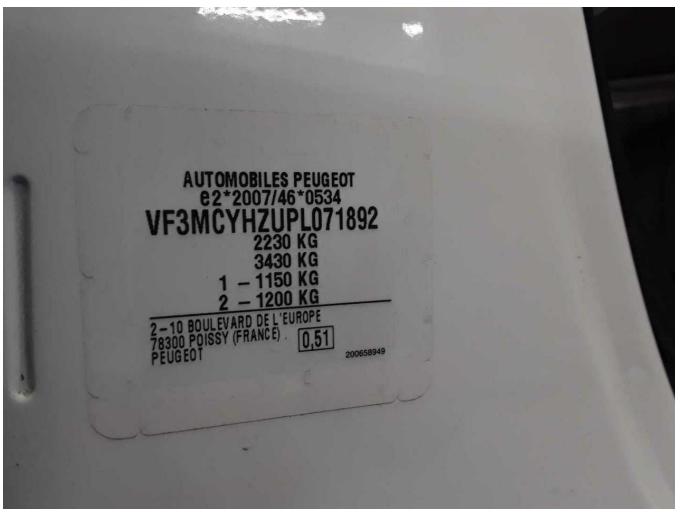


Figure 11: VIN



Figure 12: Mounted tyres



Figure 13: Documents

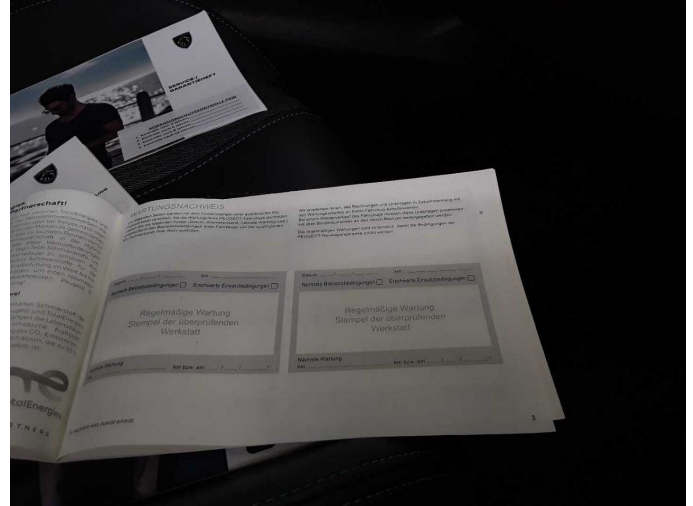


Figure 14: Documents



Figure 15: Navigation



Figure 16: Misc.



Figure 17: Misc.



Figure 18: Misc.



Figure 19: Misc.



Figure 20: Misc.

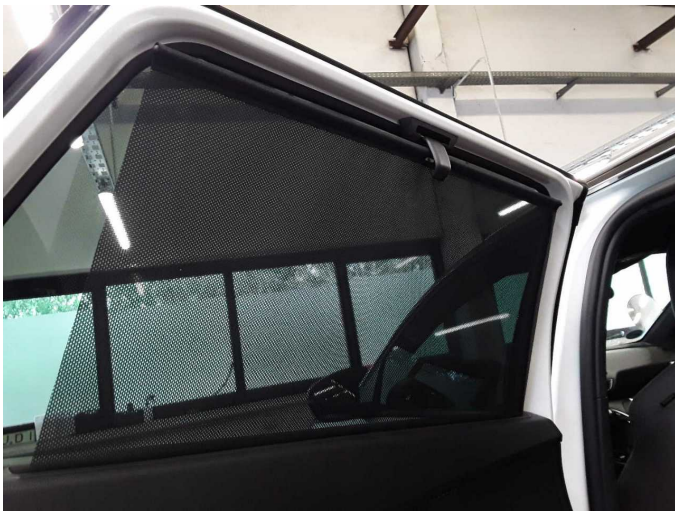


Figure 21: Misc.



Figure 22: Misc.



Figure 23: Misc.



Figure 24: Misc.



Figure 25: Misc.



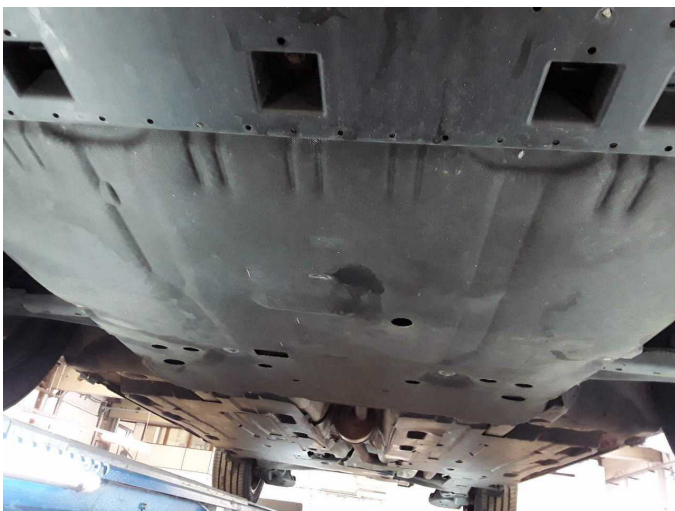
Figure 26: Misc.



Figure 27: Misc.



Figure 28: Misc.



Damage 1: Engine: Engine - Leaking - Diagnosed and repair if necessary



Wear and tear 1: Front bumper: Front bumper - Stone chips - No deduction



**Wear and tear 2:** Bonnet: Bonnet - Stone chips - No deduction



**Wear and tear 3:** Vehicle glazing: Windscreen - Stone chips - No deduction



# Wartungshistorie

(gemäß Auftraggeber Informationen)

Fahrgestellnummer: VF3MCYHZUPL071892

Hersteller / Modell: PEUGEOT PEUGEOT 5008 BlueHDi 130 EAT8 Allure Pack

Datum	KM-Stand	Beschreibung
09.01.2026	49.858	Kraftstofffilter ern; Luftfiltereinsatz ern; Motoröl b. Wartung; Ölfilter ern; Regelwartungsdienst; Wartung Sonstiges
15.03.2025	24.347	Motoröl b. Wartung; Ölfilter ern; Regelwartungsdienst; Wartung Sonstiges