

## Expertise

Protocol number: 46288007  
Order No. / Reference: 26585955  
Inspection date: 2 Jul 2026

Manufacturer: Opel

Model: Astra 1.5 D Automatik Business Elegance

VIN: VXKFBYHZTP1021150



### Vehicle details

#### Manufacturer / Type / Model / Equipment

Opel Astra 1.5 D Automatik Business Elegance

**Vehicle Identification number** VXKFBYHZTP1021150

**Mileage (Read)** 107,297 km

**First registration** 24 May 2023

**Number of holders** 1

**Power / Engine displacement** 96 kw / 1,499 ccm

**Fuel type / Cylinder** Diesel / 4

**Gearbox / Number of gears** Automatic / 8

**Type of drive** Front drive

**Type of vehicle** Saloon car

**Colour / colour code** Arktisweiß

**Doors / Seats** 5 / 5

**Upholstery type** Cloth / leather combination

**Colour of upholstery** Black-Light grey



## Vehicle details

<b>Maintenance booklet / proof</b>	digital proof / complete	<b>Next maintenance in</b>	11 Monat(e)
<b>Last service on / at</b>	05/2026 at 106,103 km		
<b>Key is / should be</b>	2 / 2	<b>FZG documents</b>	ZB#2 (B) was available (copy), ZB#1 (S) was not available.
		<b>Letter No.</b>	GS821127
<b>Previous damage / Accident</b>	None detectable	<b>Repainting</b>	Detectable
<b>Inspection conditions</b>	sufficient	<b>Lifting equipment / pit</b>	yes
<b>Test drive</b>	Not performed	<b>Engine function test</b>	Performed
<b>Manufacturer key number/ type code number</b>	1889 / AES 00087		
<b>Emission standard</b>	EURO6;WLTP;AP;PI/CI; M, N1 I	<b>fine dust sticker</b>	
<b>Permitted total weight</b>	1,940 kg	<b>Empty weight</b>	

## Tyres

### Mounted tyres

#	Tyre size	Type of tyre	Manufacturer	Tread depth
1)	225/45 R17 94Y	Summer tyres on Light alloy	Pirelli	4mm / 4mm
2)	225/45 R17 94Y	Summer tyres on Light alloy	Pirelli	4mm / 4mm

### Additional tyres

#	Tyre size	Type of tyre	Manufacturer	Tread depth
1)	205/55 R16 91H	Winter tyres on Light alloy	Continental	2mm / 2mm
2)	205/55 R16 91H	Winter tyres on Light alloy	Continental	3mm / 3mm

**Legend: Tread depth information for the left tire is listed first, for the right tire it is listed second on the axle in the direction of travel.**



## Equipment

### Standard equipment

- Storage compartments
- Airbag: Front airbags, driver and front passenger
- Airbag: Front and rear outer head airbags
- Automatic activation of the hazard warning lights
- Exterior mirror housings in black
- On-board computer
- Diesel particulate filter (DPF) maintenance-free
- Electronic brake force distribution (EBD)
- Electric windows front and rear
- Front collision warning system
- Back window, heater
- Interior rearview mirror, automatically dimming
- Air conditioning: Intelli-Air air quality system "Clean Cabin"
- Front headrests and 3 rear headrests, height adjustable
- LED ambient lighting
- LED headlights
- Steering wheel heating
- Illuminated makeup mirrors in both sun visors
- Center armrest, front and rear
- Fog light
- Tire repair kit
- Wheels: Alloy wheels 7.5 J x 17 (5 spokes) in silver/black
- Rear seat backrest folds forward in a 60:40 split
- Seat belts: Three-point seat belts in all seats
- Heated seats, driver and passenger
- Solar Protect thermal insulation glazing
- 12V power outlet in the center console
- Electronic immobilizer
- Central locking with remote control
- Airbag: Chest-pelvis-side airbags, driver and front passenger
- Anti-lock braking system (ABS)
- Exterior mirrors, electrically adjustable, heated and folding
- Hill Start Assist
- third brake light
- Tachometer
- Electronic Stability Program (ESP) and Traction Control with engine and brake intervention (TCPlus)
- Transmission: 8-speed automatic transmission
- rear window wiper
- Wiring harness for trailer hitch
- Dual-zone automatic climate control
- Paintwork: Roof in car color
- LED interior lighting
- Steering wheel: Leather steering wheel, flattened, perforated, with steering wheel remote control and paddle shifters
- Navigation system
- Electric parking brake
- Tire pressure monitoring system
- 180-degree reversing camera
- Keyless locking and starting system Keyless Open & Start
- Seats: Ergonomic active driver's seat, fabric/premium leatherette Isabella
- Start/Stop System
- Pre-wiring for ISOFIX child seat mounting system
- Wireless Charging

### Extra equipment

- Paint finish: Solid
- Wheels: Winter tires 205/55 R16 on alloy rims

## Brief expert findings

Documents submitted	At the time of the inspection, the vehicle registration certificate Part 2 (title) was available, but the vehicle registration certificate Part 1 (document) was not. (Copy)
VIN comparison	The vehicle identification number (VIN) was read from the vehicle and its conformity with the submitted documents was confirmed by the undersigned during the inspection.
Inspection	The inspection conditions were sufficient for the assessment of the vehicle. Lifting equipment and/or a pit were available for examining the vehicle.
Test drive	No test drive/shunting maneuver was carried out during the inspection of the vehicle.
Engine function test	An engine test run was performed.



## Value reducing factors

No.	Component group	Description
1	Misc.	Main inspection - No evidence - No deduction
2	Trim / covers	Floor mats - Broken / torn - Replace
3	Seat - front	Seat - Soiled - Clean
4	Rear bumper	Rear bumper - Scratched - Smart repair
5	Engine	Engine (Mehrkosten möglich) - Leaking - Perform diagnosis
6	Side panel - rear right side	Side panel - dent(s) - Smooth repair work
7	Wheel / tyres	Alloy rim - rear right side - Scratched - Loss in value
8	Engine	Engine (rasselt beim Starten - Mehrkosten möglich) - Noise - Perform diagnosis
9	Wheel / tyres	Alloy rim - front right side - Scratched - Replace
10	Wheel / tyres	Alloy rim - front left side - Scratched - Replace
11	2nd wheel set	Tyres - complete set (Profiltiefe unter 4mm) - Replace

## Wear and tear

No.	Component group	Description
1	Front bumper	Front bumper - Stone chips - No deduction
2	Bonnet	Bonnet - Stone chips - No deduction
3	Vehicle glazing	Windscreen - Stone chips - No deduction
4	2nd wheel set	Alloy rim set - complete - Scratched - No deduction

The vehicle shows signs of wear and tear commensurate with its age and use.

## Repainting

### No. Repainting

- 1 Door - rear left side, Door - front left side, Professionally carried out, Invoice of repair done Non-existent

## Order/Scope of Order

An order was placed to prepare a sales report for the described vehicle. This report includes the following:

- Description of key vehicle information
- Documentation of equipment features  
(*Delivery by third-party service providers*)
- Documentation of damage, defects, missing parts
- Documentation of prior damage, unrepaired prior damage, repainting
- A brief visual or functional inspection of the equipment details, if possible.  
(*Functional testing of driver assistance systems is not included in the scope of services!*)
- a photographic documentation of the vehicle



## Basis for the order

This product is based on the guidelines for vehicle returns and valuations published by Alphabet Fleet GmbH. The expert makes the specific findings in each individual case objectively, within the framework of the prescribed standards, based on their own expertise.

The vehicle inspection takes place in a fully assembled, unassembled state.

Damage or defects that can only be detected during disassembly/diagnostic work or through further investigation remain within the realm of prognostic risk. An increased risk exists due to concealed defects caused by fraudulent misrepresentation and which were not identifiable by the expert.

Damage or defects resulting from normal use or wear and tear of the vehicle will be accepted in accordance with the applicable standard.

There was no explicit identification or monetary consideration of the expected features within the product.

Features which, in their nature and extent, slightly exceed normal use but do not constitute unacceptable damage, will be documented and indicated as signs of wear, if applicable.

Damage or defects that, according to the applicable standard, can no longer be attributed to normal use or wear and tear are listed under "Value Reducing Factors" in the product description.

Depending on the product specification, a monetary ID can be provided. If this takes place, the costs can be 100% d or pro rata depending on the vehicle's age and mileage.

## Previous damages

No apparent prior damage that had been repaired could be found on the vehicle.



Figure 1: Diagonal front (left)



Figure 2: Diagonal front (right)



Figure 3: Diagonal rear (left)



Figure 4: Diagonal rear (right)



Figure 5: Interior - front



Figure 6: Interior - rear



Figure 7: Instrument cluster



Figure 8: Instrument panel



Figure 9: Interior 360° view



Figure 10: VIN



Figure 11: Mounted tyres

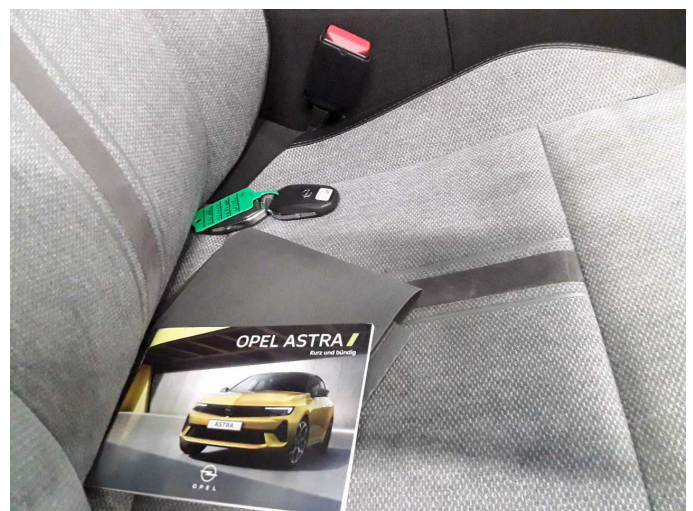


Figure 12: Documents



Figure 13: Additional tyres



Figure 14: Additional tyres

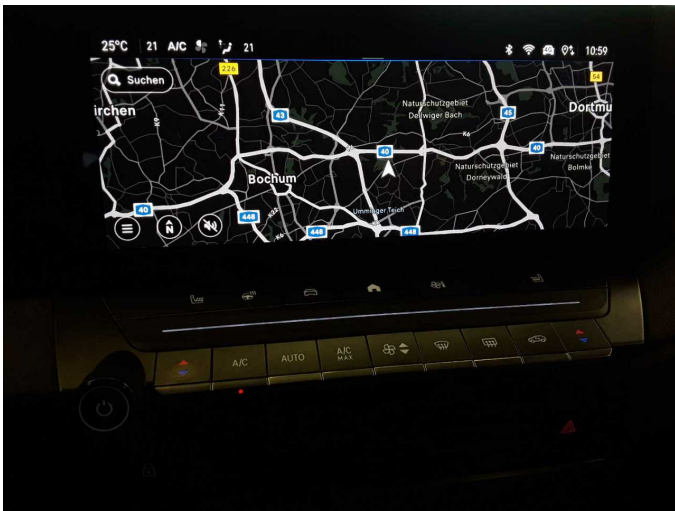


Figure 15: Navigation



Figure 16: Misc.



Figure 17: Misc.



Figure 18: Misc.



Figure 19: Misc.



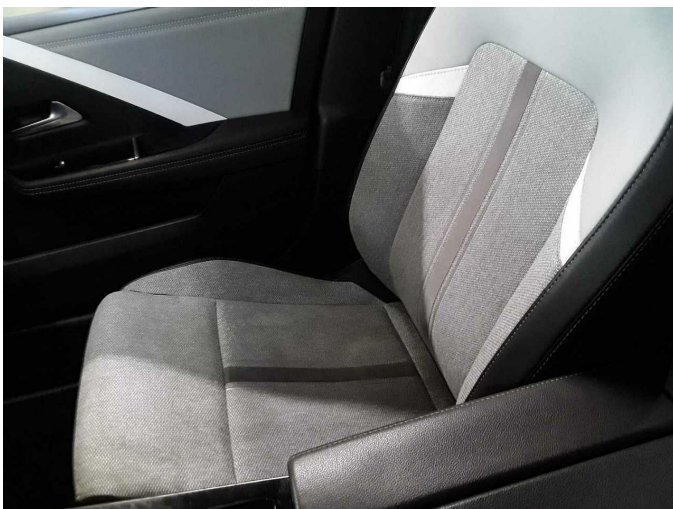
Figure 20: Misc.



Figure 21: Misc.



Damage 2: Trim / covers: Floor mats - Broken / torn - Replace



Damage 3: Seat - front: Seat - Soiled - Clean



Damage 3: Seat - front: Seat - Soiled - Clean



**Damage 4:** Rear bumper: Rear bumper - Scratched - Smart repair



**Damage 4:** Rear bumper: Rear bumper - Scratched - Smart repair



**Damage 5:** Engine: Engine (Mehrkosten möglich) - Leaking - Perform diagnosis



**Damage 5:** Engine: Engine (Mehrkosten möglich) - Leaking - Perform diagnosis



**Damage 6:** Side panel - rear right side: Side panel - dent(s) - Smooth repair work



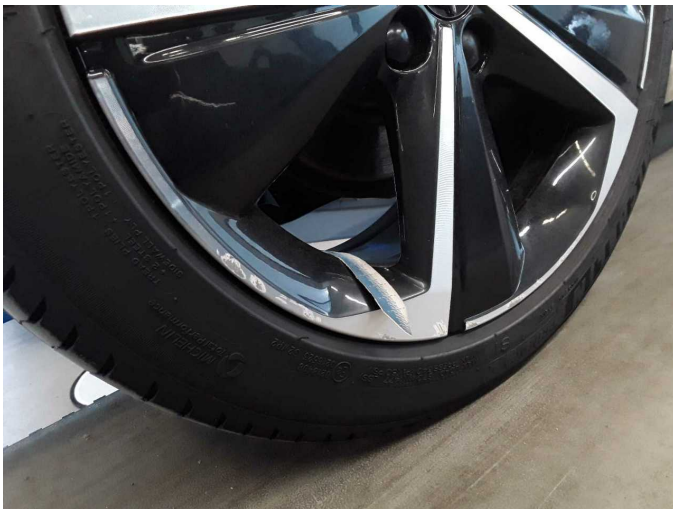
**Damage 6:** Side panel - rear right side: Side panel - dent(s) - Smooth repair work



**Damage 6:** Side panel - rear right side: Side panel - dent(s) - Smooth repair work



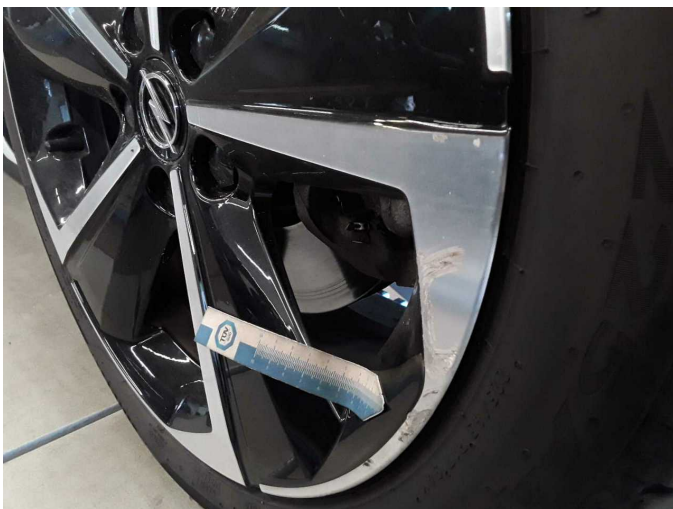
**Damage 7:** Wheel / tyres: Alloy rim - rear right side - Scratched - Loss in value



**Damage 7:** Wheel / tyres: Alloy rim - rear right side - Scratched - Loss in value



**Damage 9:** Wheel / tyres: Alloy rim - front right side - Scratched - Replace



**Damage 9:** Wheel / tyres: Alloy rim - front right side - Scratched - Replace



**Damage 9:** Wheel / tyres: Alloy rim - front right side - Scratched - Replace



**Damage 10:** Wheel / tyres: Alloy rim - front left side - Scratched - Replace **Damage 10:** Wheel / tyres: Alloy rim - front left side - Scratched - Replace



**Repainting 1:** Door - rear left side, Door - front left side **Repainting 1:** Door - rear left side, Door - front left side



**Repainting 1:** Door - rear left side, Door - front left side **Repainting 1:** Door - rear left side, Door - front left side



# Wartungshistorie

(gemäß Auftraggeber Informationen)

Fahrgestellnummer: VXKFBYHZTP1021150

Hersteller / Modell: OPEL OPEL Astra 1.5 D Automatik Business Elegance

Datum	KM-Stand	Beschreibung
13.05.2026	106.103	Motoröl b. Wartung; Ölfilter ern; Ölwechsel; Wartung Sonstiges
18.02.2026	98.724	Batterie ern; Systemtest/Eigendiagnose
25.11.2025	90.858	Bremsflüssigkeit; Bremsflüssigkeit ern; Regelwartungsdienst
15.10.2025	87.303	Motoröl b. Wartung; Ölfilter ern; Ölwechsel; Systemtest/Eigendiagnose; Wartung Sonstiges
01.10.2025	85.918	Bremse Sonstiges; Bremsklötze hinten; Bremsscheiben + Klötze h; Bremsscheiben hinten
16.12.2024	60.583	Kraftstofffilter ern; Luftfiltereinsatz ern; Motoröl b. Wartung; Ölfilter ern; Regelwartungsdienst; Wartung Sonstiges
27.09.2024	53.167	Bremse Sonstiges; Bremsklötze vorne; Bremsscheiben + Klötze v; Bremsscheiben vorne
16.02.2024	28.749	Motoröl b. Wartung; Ölfilter ern; Regelwartungsdienst; Wartung Sonstiges