

Expertise

Protocol number: 46310942
Order No. / Reference: 26622117
Inspection date: 1 Jul 2026

Manufacturer: Volkswagen

Model: Passat Variant 2.0 TDI SCR DSG Business

VIN: WVVZZZ3CZNE001006



Vehicle details

Manufacturer / Type / Model / Equipment

Volkswagen Passat Variant 2.0 TDI SCR DSG Business

Vehicle Identification number WVVZZZ3CZNE001006

Mileage (Read) 166,248 km

First registration 6 Sept 2021

Number of holders 1

Next periodical technical inspection 11/2026
(Report not on hand)

Power / Engine displacement 110 kw / 1,968 ccm

Fuel type / Cylinder Diesel / 4

Gearbox / Number of gears Automatic / 7

Type of drive Front drive

Type of vehicle Station wagon

Colour / colour code Mangangrau-Metallic

Doors / Seats 5 / 5

Upholstery type Cloth

Colour of upholstery Grey-Black



Vehicle details

Maintenance booklet / proof	digital proof / complete	Next maintenance in	13,100 km
Last service on / at	11/2025 at 154,324 km		
Key is / should be	2 / 2	FZG documents	ZB#2 (B) was available (copy), ZB#1 (S) was not available.
		Letter No.	GC450600
Previous damage / Accident	None detectable	Repainting	None detectable
Inspection conditions	sufficient	Lifting equipment / pit	No
Test drive	Not performed	Engine function test	Performed
Manufacturer key number/ type code number	0603 / BQS 01483		
Emission standard	EURO6;WLTP;AP;PI/CI; M, N1 I	fine dust sticker	
Permitted total weight	2,200 kg	Empty weight	

Tyres

Mounted tyres

#	Tyre size	Type of tyre	Manufacturer	Tread depth
1)	215/60 R16 99H	Winter tyres on Steel rim with wheel cover	Semperit	6mm / 6mm
2)	215/60 R16 99H	Winter tyres on Steel rim with wheel cover	Semperit	7mm / 7mm

Additional tyres

#	Tyre size	Type of tyre	Manufacturer	Tread depth
1)	215/60 R16 95V	Summer tyres on Light alloy	Continental	0mm / 0mm
2)	215/60 R16 95V	Summer tyres on Light alloy	Continental	1mm / 1mm

Replacement

Typ	Tyre size	Type of tyre	Manufacturer	Tread depth
	Tirefit	Expiration date 05/2025		

Legend: Tread depth information for the left tire is listed first, for the right tire it is listed second on the axle in the direction of travel.

TÜV SÜD Auto Partner GmbH
Gutenbergstraße 13
70771 Leinfelden-Echterdingen

Inspection location
Hartmann Fleet Professionals GmbH
Leerenstraße 25
29683 Bad Fallingbommel



Equipment



Standard equipment

- Airbag for driver and front passenger (airbag deactivation switch on the passenger side)
- Anti-lock braking system (ABS)
- Adaptive Cruise Control (ACC) "stop & go", including speed limiter
- Electrically adjustable and heated exterior mirrors, ambient lighting (automatically dimming on the driver's side)
- Chrome trim on the side windows
- black roof rails
- Tachometer
- Entry/warning lights in LED technology in the front doors
- Electronic parking brake including auto-hold function
- Automatic headlight control (with daytime running lights, "Leaving home" function and manual "Coming home" function)
- Pedestrian detection
- Adjustable luggage compartment floor
- Interior lights with delayed shut-off and dimming function (2 LED reading lights each at the front and rear)
- Air conditioning (with active combination filter)
- Rear headrests (3)
- LED fog lights and cornering lights
- LED taillights
- Steering wheel: Multifunction steering wheel in leather, with paddle shifters
- Multifunction display "Premium" with multi-color display (showing, among other things: - Outside temperature - Average consumption - Average speed - Trip distance - Trip time - Gear recommendation - Speed warning - Comfort - Current consumption - Range - Service - Time with extended display options, e.g.: - Digital speedometer - Digital oil temperature display - Lights & visibility - Language - Auxiliary heater - Winter tires)
- Emergency call service (no registration required, service is activated upon delivery)
- Upholstery: Fabric "Weave" (center panels of the front seats and outer rear seats in fabric "Weave")
- Proactive occupant protection system in conjunction with "Front Assist" (detects critical traffic situations with increased accident potential - prepares vehicle occupants and the vehicle for a possible accident by tightening the front, fastened seat belts and securing the driver and front passenger, and closing open windows and the sunroof except for a gap)
- Radio "Composition" (touchscreen with 16.5 cm screen diagonal - 8 speakers - output power 4 x 20 watts - diversity antenna for FM reception - dual tuner - RDS - MP3 playback - USB-C interface - 3-way tone control)
- Tire pressure monitoring system (passive)
- Wheels: 4 light alloy wheels "Sepang" 6.5 J x 16 (tires 215/60 R 16, optimized for rolling resistance)
- Rear bench seat undivided, backrest asymmetrically split and foldable, with center armrest (and pass-through option)
- Power steering (electromechanical, speed-dependent)
- Airbag, head airbag system for front and rear passengers (including front side airbags)
- App-Connect (Volkswagen offers three interfaces for connecting smartphones with numerous possibilities: - Apple CarPlay - Android Auto from Google - MirrorLink)
- Cup holders (2) front
- Hill start assist
- third brake light
- Headliner in Mistral Grey
- Diesel particulate filter
- Parking aid - warning signals for obstacles in the front and rear area
- Electronic stability program and electromechanical brake booster
- Remote release for luggage compartment lid
- Windscreen made of laminated safety glass, heat and sound insulating
- Transmission: 7-speed DSG (7-speed dual-clutch transmission DSG)
- ISOFIX mounting points (for attaching 2 child seats to the rear seats, also for i-Size child seats)
- Front headrests (safety-optimized, longitudinally and height-adjustable)
- LED headlights with daytime running lights
- Headlight range control
- Front center armrest, height and length adjustable, with storage box (2 rear air vents with chrome slats)
- Fatigue detection (detects signs of possible driver fatigue based on characteristic steering behavior, time of day and driving duration and issues a visual and audible warning)
- Mesh partition
- Non-smoking version (storage compartment and 12V socket at the front)
- Emergency braking assistant "Front Assist" (for automatic distance control ACC up to 210 km/h)
- Package: Light and Sight Package "Plus" (LED lights in the front footwell - Electrically adjustable and heated exterior mirrors, automatically dimming on the driver's side - Entry/warning lights in the front doors, in LED technology - Automatic headlight control, with daytime running lights, "Leaving Home" function and manual "Coming Home" function - Interior light with delayed shut-off and dimming function, 2 LED reading lights each in the front and rear - Automatically dimming interior mirror - Illuminated vanity mirrors - Extendable sun visors - Rain sensor)
- Radio accessories: Digital radio reception DAB+ (reception of digitally broadcast radio stations and traffic information in addition to the analog station offering - reception depends on the local availability of digital networks - expanded range of radio programs - improved reception performance)
- Wheels: Tire Mobility Set (12-volt compressor and tire sealant)
- Gearshift knob in leather
- Keyless start system without safe locking



- Seats: Comfort seats in the front
- Seats: Lumbar support in the front (driver's side electrically adjustable)
- Lane Assist (warns with a corrective steering intervention if the vehicle unintentionally leaves the lane)
- 12V power outlet on the rear center console (and in the luggage compartment)
- First aid kit, warning triangle and high-visibility vest
- Electronic immobilizer

Extra equipment

- "Comfort" telephone interface with inductive charging function (hands-free system)
- Chassis: Rear suspension with fully automatic level control
- Navigation system "Discover Media" incl. "Streaming & Internet" (4x20 watts, user interface with proximity sensor, dual tuner with phase diversity, vehicle menu, speed, volume adjustment, map, 2D display, tone control, 3-way TFT display with touchscreen operation, navigation "Discover Media" incl. "Streaming & Internet", MP3 radio, telephone contact addresses for navigation, telephone interface, 2 USB ports also for iPod/iPhone, traffic sign recognition "VW Media Control", We Connect Plus, 3 years, incl. We Connect route guidance, dynamic RDS, TMC tuner)
- Paint finish: Metallic
- Proactive occupant protection system and lane change assistant "Side Assist" (Proactive occupant protection system in conjunction with "Front Assist" and "Side Assist" - lane change assistant "Side Assist" and parking assistant)
- Surround view "Area View" incl. reversing camera "Rear View" with Business Premium (displays the vehicle's surroundings in real time on the radio/navigation system display - assists when exiting blind driveways or side streets, when parking in and out of parking spaces, when maneuvering with a trailer or when driving off-road)
- Voice control

- Seat belts: Three-point automatic seat belt (seat belt for middle rear seat - seat belts for outer rear seats - front seat belts with height adjustment and belt tensioner)
- Seats: Front seats height-adjustable (ergoComfort seat on the driver's side - with electric backrest adjustment)
- Start-stop system (with brake energy recuperation)
- Telephone interface
- Textile floor mats (front and rear)
- Warning tone and light for unfastened seat belts front and rear

- App-Connect Wireless (Volkswagen offers three interfaces for connecting smartphones with numerous possibilities: - Apple CarPlay - Android Auto from Google - MirrorLink)
- Package: "Business Premium" package incl. navigation (from Business trim level) (2 USB-C ports in the front, 1 USB-C charging port in the rear, 230V socket, App-Connect incl. wireless, Apple CarPlay, Android Auto, "Travel Assist" driver assistance system and "Lane Assist" lane keeping system, Air Care Climatronic with 3-zone temperature control, allergen filter and rear controls, lumbar support in the front, electric on the driver's side, massage function on the driver's side, "Rear View" reversing camera, heated windshield washer nozzles, Comfort telephone interface, inductive charging function, heated front seats)
- Rear side windows and rear window tinted
- Removable luggage compartment protective mat (back of the rear seat backrest with black rubber coating)
- Roof headliner in titanium black (with custom installation)
- Seats: ergoComfort seat with 14-way electric adjustment, memory and massage on driver's side in conjunction with Business Package (electrically folding exterior mirrors, auto-dimming on driver's side, ambient lighting and memory - electrically adjustable lumbar support in front, massage function on driver's side - electrically adjustable front seats, ergoComfort seat on driver's side, with memory function and comfort entry)
- Towbar, foldable (with electric release)

Brief expert findings

Documents submitted	At the time of the inspection, the vehicle registration certificate Part 2 (title) was available, but the vehicle registration certificate Part 1 (document) was not. (Copy)
VIN comparison	The vehicle identification number (VIN) was read from the vehicle and its conformity with the submitted documents was confirmed by the undersigned during the inspection.
Inspection	The inspection conditions were sufficient for the assessment of the vehicle. No lifting equipment or pit was available for inspecting the vehicle. Therefore, inspection of the vehicle's underside was only possible to a limited extent.
Test drive	No test drive/shunting maneuver was carried out during the inspection of the vehicle.
Engine function test	An engine test run was performed.



Value reducing factors

No.	Component group	Description
1	Misc.	Main inspection - No evidence - No deduction
2	Equipment	Tirefit filler - Expired - Replace
3	Wing mirror - right side	Cap - Scratch(es) - Smart repair
4	Sill - right side	Sill - dent(s) - Smooth repair work
5	Side panel - rear left side	Side panel - dent(s) - Smooth repair work
6	Interior	Interior (Tierhaare) - Soiled - Conditioning
7	Side panel - rear right side	Sill - dent(s) - Smooth repair work
8	Instrument panel	Air nozzle - centre (hinten) - Broken / torn - Replace
9	Body	A-pillar - right side - Corrosion - Repair and paint
10	Engine	Engine (quietschen (Riementrieb) - Folgekosten möglich) - Noise - Perform diagnosis
11	Tail light	Tail lamp - left side (innen) - Broken / torn - Replace
12	Tail light	Tail lamp - right side (innen) - Broken / torn - Replace
13	Tail light	Tail lamp - left side (außen) - Broken / torn - Replace
14	2nd wheel set	Tyres - complete set - Worn - Replace
15	Electronic systems	Front camera - Stone chips - Replace
16	Body	Body (Korrosion an Dach & Motorhaube) - Damage by hail - Repair and paint

Wear and tear

No.	Component group	Description
1	Gearbox	Selector lever - Scratch(es) - No deduction
2	Side panel - rear left side	Sill - Scratch(es) - No deduction
3	Trim / covers	Boot lining - Scratch(es) - No deduction
4	Trim / covers	Boot sill cover - Scratch(es) - No deduction
5	Rear bumper	Rear bumper - Scratch(es) - No deduction
6	Vehicle glazing	Windscreen - Stone chips - No deduction
7	Body	Body - Soiled - No deduction
8	Trim / covers	Boot lid - interior trim - Scratch(es) - No deduction

The vehicle shows signs of wear and tear commensurate with its age and use.

Order/Scope of Order

An order was placed to prepare a sales report for the described vehicle. This report includes the following:

- Description of key vehicle information
- Documentation of equipment features
(*Delivery by third-party service providers*)
- Documentation of damage, defects, missing parts
- Documentation of prior damage, unrepaired prior damage, repainting
- A brief visual or functional inspection of the equipment details, if possible.
(*Functional testing of driver assistance systems is not included in the scope of services!*)
- a photographic documentation of the vehicle



Basis for the order

This product is based on the guidelines for vehicle returns and valuations published by Alphabet Fleet GmbH. The expert makes the specific findings in each individual case objectively, within the framework of the prescribed standards, based on their own expertise.

The vehicle inspection takes place in a fully assembled, unassembled state.

Damage or defects that can only be detected during disassembly/diagnostic work or through further investigation remain within the realm of prognostic risk. An increased risk exists due to concealed defects caused by fraudulent misrepresentation and which were not identifiable by the expert.

Damage or defects resulting from normal use or wear and tear of the vehicle will be accepted in accordance with the applicable standard.

There was no explicit identification or monetary consideration of the expected features within the product.

Features which, in their nature and extent, slightly exceed normal use but do not constitute unacceptable damage, will be documented and indicated as signs of wear, if applicable.

Damage or defects that, according to the applicable standard, can no longer be attributed to normal use or wear and tear are listed under "Value Reducing Factors" in the product description.

Depending on the product specification, a monetary ID can be provided. If this takes place, the costs can be 100% or pro rata depending on the vehicle's age and mileage.

Previous damages

No apparent prior damage that had been repaired could be found on the vehicle.



Figure 1: Diagonal front (left)



Figure 2: Diagonal front (right)



Figure 3: Diagonal rear (left)



Figure 4: Diagonal rear (right)



Figure 5: Interior - front



Figure 6: Interior - rear



Figure 7: Instrument cluster



Figure 8: Instrument panel



Figure 9: Interior 360° view



Figure 10: Cargo area

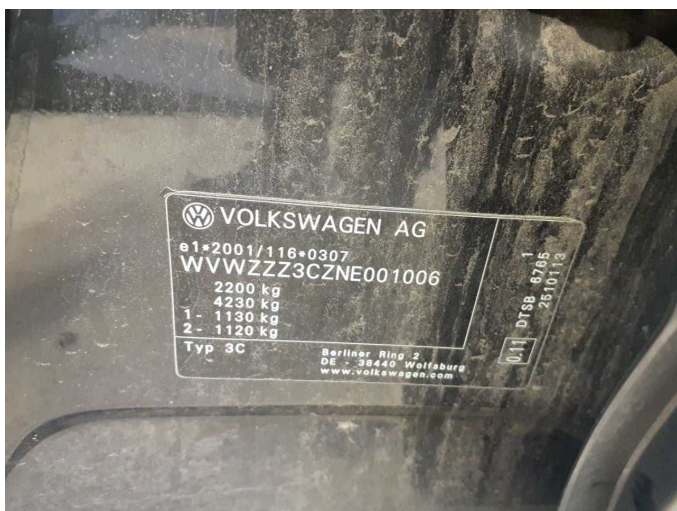


Figure 11: VIN



Figure 12: Mounted tyres



Figure 13: Documents



Figure 14: Additional tyres



Figure 15: Additional tyres



Figure 16: Navigation

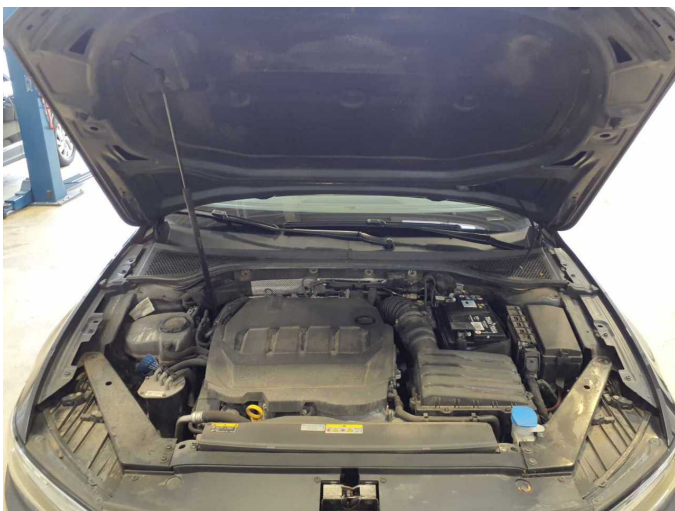


Figure 17: Misc.



Figure 18: Misc.



Figure 19: Misc.



Figure 20: Misc.



Figure 21: Misc.



Figure 22: Misc.

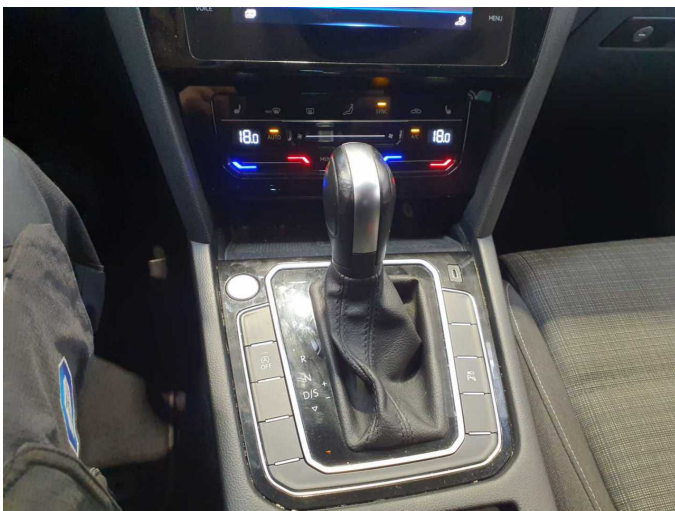


Figure 23: Misc.



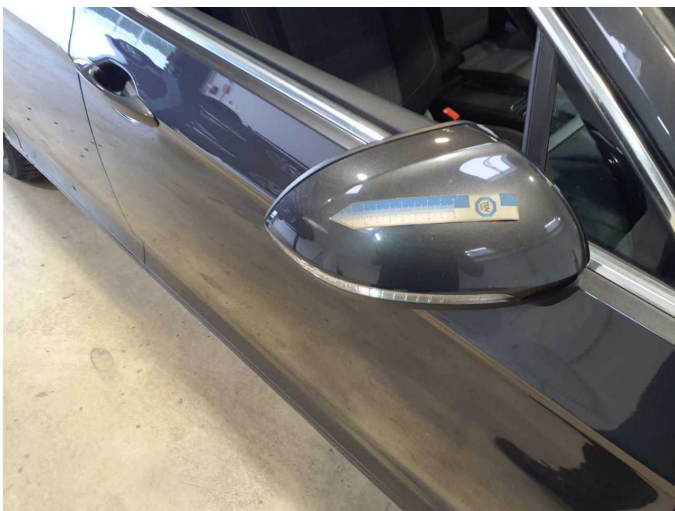
Figure 24: Misc.



Figure 25: Misc.



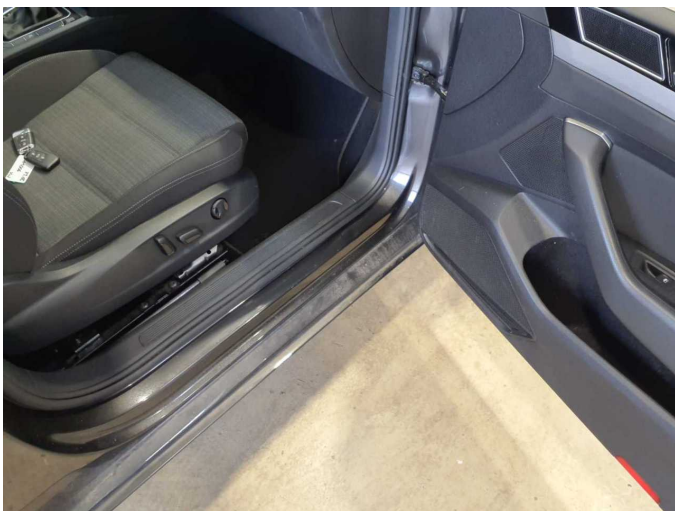
Damage 2: Equipment: Tirefit filler - Expired - Replace



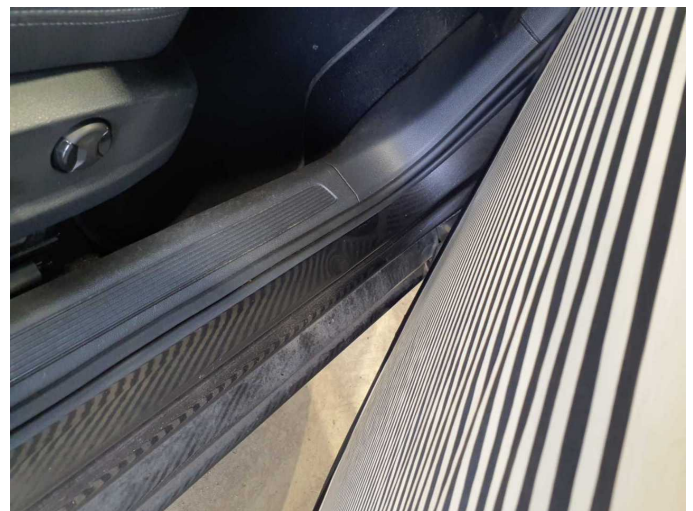
Damage 3: Wing mirror - right side: Cap - Scratch(es) - Smart repair



Damage 3: Wing mirror - right side: Cap - Scratch(es) - Smart repair



Damage 4: Sill - right side: Sill - dent(s) - Smooth repair work



Damage 4: Sill - right side: Sill - dent(s) - Smooth repair work



Damage 5: Side panel - rear left side: Side panel - dent(s) - Smooth repair work



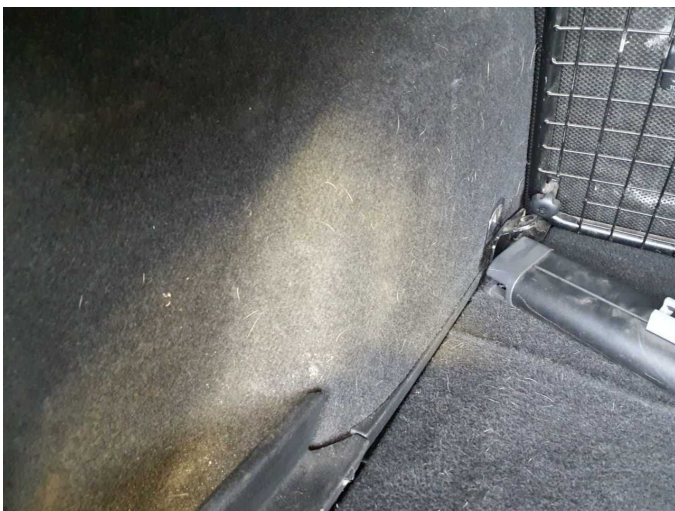
Damage 5: Side panel - rear left side: Side panel - dent(s) - Smooth repair work



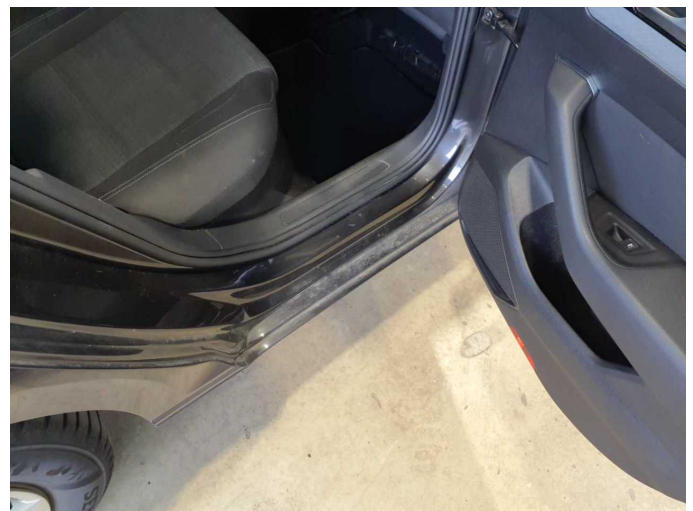
Damage 6: Interior: Interior (Tierhaare) - Soiled - Conditioning



Damage 6: Interior: Interior (Tierhaare) - Soiled - Conditioning



Damage 6: Interior: Interior (Tierhaare) - Soiled - Conditioning



Damage 7: Side panel - rear right side: Sill - dent(s) - Smooth repair work



Damage 7: Side panel - rear right side: Sill - dent(s) - Smooth repair work



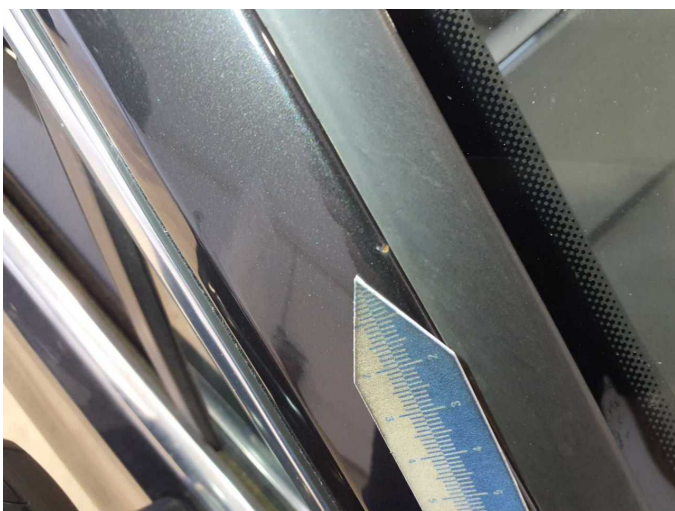
Damage 8: Instrument panel: Air nozzle - centre (hinten) - Broken / torn - Replace



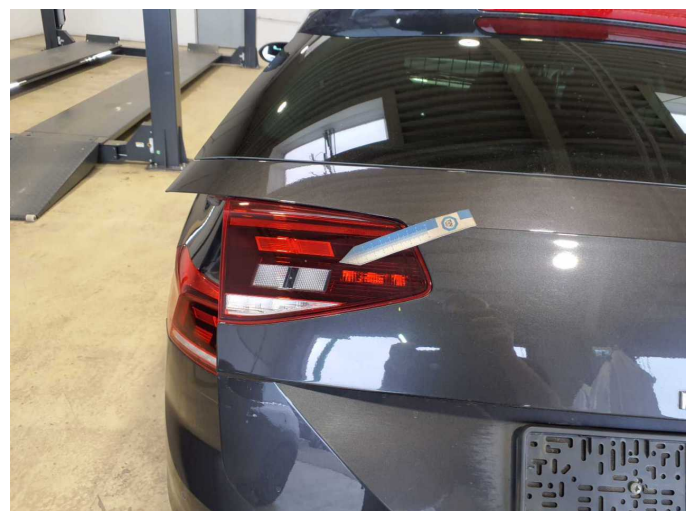
Damage 8: Instrument panel: Air nozzle - centre (hinten) - Broken / torn - Replace



Damage 9: Body: A-pillar - right side - Corrosion - Repair and paint



Damage 9: Body: A-pillar - right side - Corrosion - Repair and paint



Damage 11: Tail light: Tail lamp - left side (innen) - Broken / torn - Replace



Damage 11: Tail light: Tail lamp - left side (innen) - Broken / torn - Replace



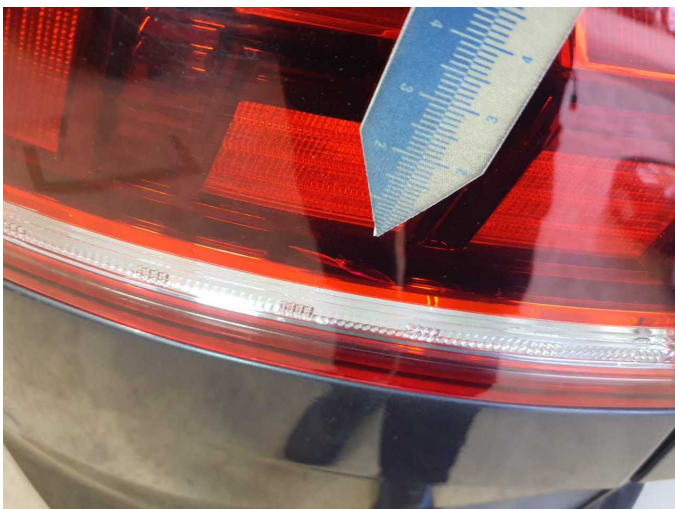
Damage 12: Tail light: Tail lamp - right side (innen) - Broken / torn - Replace



Damage 12: Tail light: Tail lamp - right side (innen) - Broken / torn - Replace



Damage 13: Tail light: Tail lamp - left side (außen) - Broken / torn - Replace



Damage 13: Tail light: Tail lamp - left side (außen) - Broken / torn - Replace



Damage 14: 2nd wheel set: Tyres - complete set - Worn - Replace



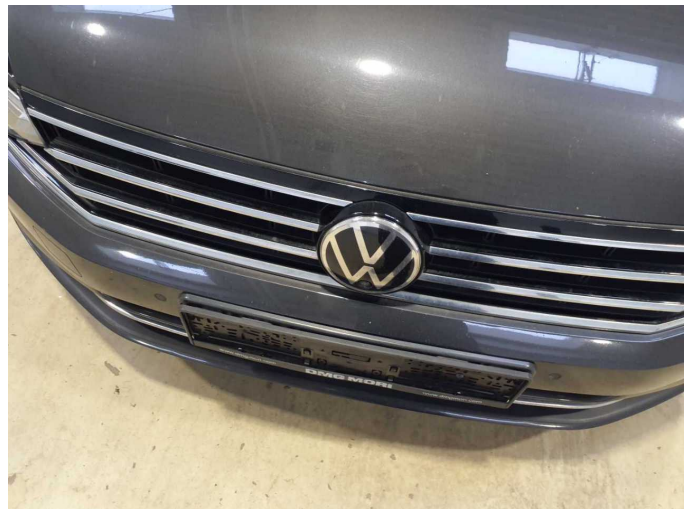
Damage 14: 2nd wheel set: Tyres - complete set - Worn - Replace



Damage 14: 2nd wheel set: Tyres - complete set - Worn - Replace



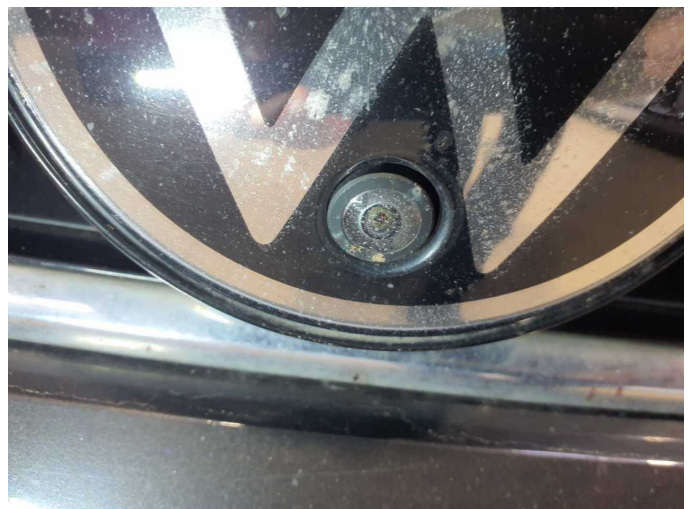
Damage 14: 2nd wheel set: Tyres - complete set - Worn - Replace



Damage 15: Electronic systems: Front camera - Stone chips - Replace



Damage 15: Electronic systems: Front camera - Stone chips - Replace



Damage 15: Electronic systems: Front camera - Stone chips - Replace



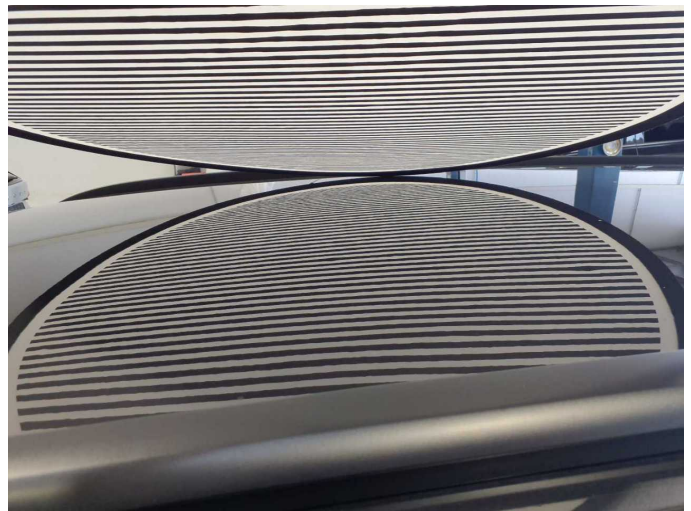
Damage 16: Body: Body (Korrosion an Dach & Motorhaube) - Damage by hail - Repair and paint



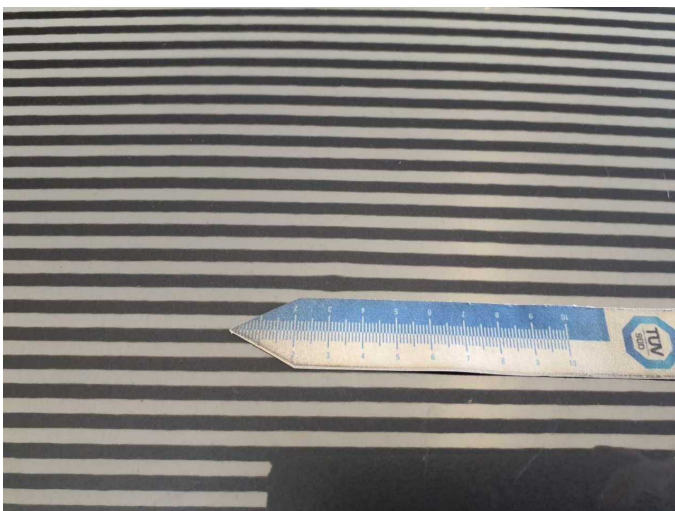
Damage 16: Body: Body (Korrosion an Dach & Motorhaube) - Damage by hail - Repair and paint



Damage 16: Body: Body (Korrosion an Dach & Motorhaube) - Damage by hail - Repair and paint



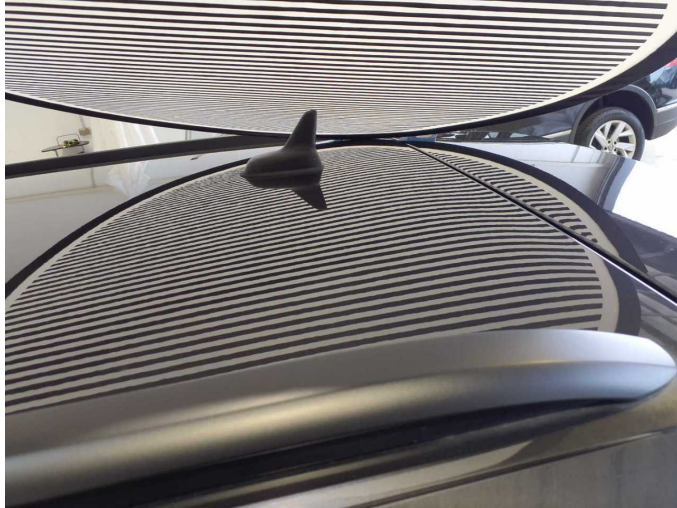
Damage 16: Body: Body (Korrosion an Dach & Motorhaube) - Damage by hail - Repair and paint



Damage 16: Body: Body (Korrosion an Dach & Motorhaube) - Damage by hail - Repair and paint



Damage 16: Body: Body (Korrosion an Dach & Motorhaube) - Damage by hail - Repair and paint



Damage 16: Body: Body (Korrosion an Dach & Motorhaube) - Damage by hail - Repair and paint



Damage 16: Body: Body (Korrosion an Dach & Motorhaube) - Damage by hail - Repair and paint



Damage 16: Body: Body (Korrosion an Dach & Motorhaube) - Damage by hail - Repair and paint



Damage 16: Body: Body (Korrosion an Dach & Motorhaube) - Damage by hail - Repair and paint



Damage 16: Body: Body (Korrosion an Dach & Motorhaube) - Damage by hail - Repair and paint



Damage 16: Body: Body (Korrosion an Dach & Motorhaube) - Damage by hail - Repair and paint



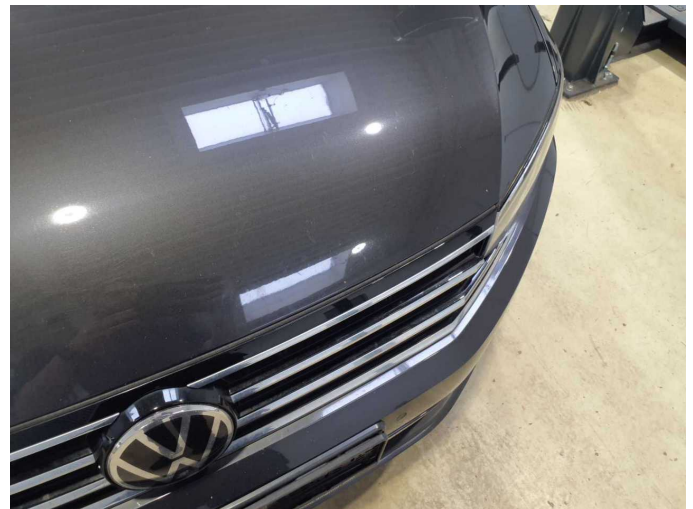
Damage 16: Body: Body (Korrosion an Dach & Motorhaube) - Damage by hail - Repair and paint



Damage 16: Body: Body (Korrosion an Dach & Motorhaube) - Damage by hail - Repair and paint



Damage 16: Body: Body (Korrosion an Dach & Motorhaube) - Damage by hail - Repair and paint



Damage 16: Body: Body (Korrosion an Dach & Motorhaube) - Damage by hail - Repair and paint



Damage 16: Body: Body (Korrosion an Dach & Motorhaube) - Damage by hail - Repair and paint



Damage 16: Body: Body (Korrosion an Dach & Motorhaube) - Damage by hail - Repair and paint



Damage 16: Body: Body (Korrosion an Dach & Motorhaube) - Damage by hail - Repair and paint



Damage 16: Body: Body (Korrosion an Dach & Motorhaube) - Damage by hail - Repair and paint



Damage 16: Body: Body (Korrosion an Dach & Motorhaube) - Damage by hail - Repair and paint



Wear and tear 8: Trim / covers: Boot lid - interior trim - Scratch(es) - No deduction



Wear and tear 8: Trim / covers: Boot lid - interior trim - Scratch(es) - No deduction



Wear and tear 8: Trim / covers: Boot lid - interior trim - Scratch(es) - No deduction