

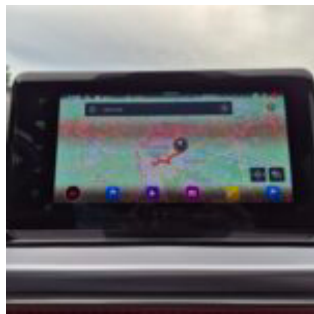
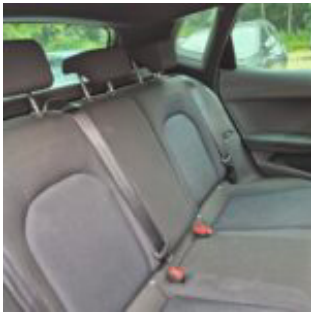
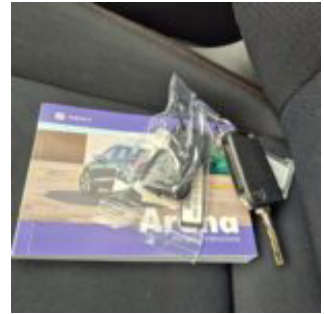
2-GGE-413

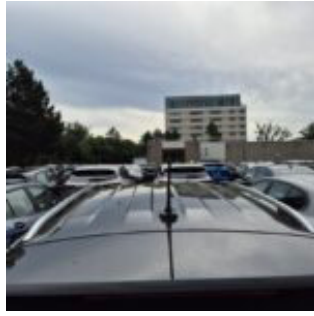
2-GGE-413 · FR 1.0 110PS AT / Winter-Paket : Beheizbare Vordersitze -
Höhenverstellbare Vordersitze · 30 June 2026 · Zaventem (BE)

Specifications

License Plate Number	2-GGE-413	Fuel Type	Gasoline
Manufacturer	SEAT	VIN	VSSZZZKJ6SR515251
Model	Arona	Cylinder Capacity	999 ^{cm³}
Model Versions	FR 1.0 110PS AT / Winter-Paket : Beheizbare Vordersitze - Höhenverstellbare Vordersitze	Transmission Type	Automatisch geschakelde Transmissie
Body Type	5 door hatchback	First Admission	02-12-2024
Color	Black	Odometer	63.651 ^{km}
Paint Type	Metallic	Numer Of Keys	2
Production Year	2024	Interior	Grey
KW	81	Number Headrests	5

Images





Accessories

ABS

Airbags

Alloy wheels

Audio System

Automatic air conditioning

Bluetooth car kit

Central door locking

Centre armrest

Cruise control

Electric rear windows

Electric windows front

Electrically adjustable exterior mirrors

Front & rear parking sensors

Leather steering wheel

Navigation system

Rear view camera

Roller cover / parcel shelf

Seat heating

Steering wheel multifunction

Condition

Condition exterior Adequate

Condition interior Adequate

Last Maintenance Unknown

Previous Repairs Unknown

Tire Specifications

Tire	Profile	Brand	Width	Aspect Ratio	Radial	Type
Front Left	4 ^{mm}	Uniroyal	205 ^{mm}	55 ^{mm}	17 ^{inch}	All Season
Rear Left	6 ^{mm}	Uniroyal	205 ^{mm}	55 ^{mm}	17 ^{inch}	All Season
Front Right	4 ^{mm}	Uniroyal	205 ^{mm}	55 ^{mm}	17 ^{inch}	All Season
Rear Right	6 ^{mm}	Uniroyal	205 ^{mm}	55 ^{mm}	17 ^{inch}	All Season
Spare Tire Type	Compressor					

Damages



Damage Part

Co drivers seat



Damage Type

Stains & dirt

Repair Type

Cleaning

Acceptable

No



Damage Part

Bumper - Rear



Damage Type

Scratch(es)

Repair Type

Spray

Acceptable

No



Damage Part

Reardoor - Left



Damage Type

Scratch(es)

Repair Type

Replace

Acceptable

No



Damage Part

Skirt - Left



Damage Type

Scratch(es)

Repair Type

Plastic Repair

Acceptable

No



Damage Part

Overfender

Damage Type

Scratch(es)

Repair Type

Replace

Acceptable

No



Damage Part

Fender - Rear Left



Damage Type

Scratch(es)

Repair Type

Spray

Acceptable

No



Damage Part

Reardoor - Left



Damage Type

Dent(s) & Scratch(es)



Repair Type

Panelbeating & Spray

Acceptable

No



Damage Part

Frontdoor - Left



Damage Type

Door-edge chipped

Repair Type

Acceptable

Acceptable

Yes



Damage Part

Hood



Damage Type

Stonechipping

Repair Type

Acceptable

Acceptable

Yes



Damage Part
Alloy - Right Front



Damage Type
Damaged

Repair Type
Rim repair

Acceptable
No



Damage Part
Tailgate



Damage Type
Scratch(es)

Repair Type
Spray

Acceptable
No



Damage Part
Interior



Damage Type
Stains & dirt

Repair Type
Cleaning

Acceptable
No