

Expertise

Protocol number: 45918486
Order No. / Reference: 26422763
Inspection date: 12 Jun 2026

Manufacturer: Audi

Model: Q8 e-tron 50 quattro S line

VIN: WAUZZZGE6RB004863



Vehicle details

Manufacturer / Type / Model / Equipment

Audi Q8 e-tron 50 quattro S line

Vehicle Identification number WAUZZZGE6RB004863

Mileage (Read) 61,641 km

First registration 14 Mar 2023

Number of holders 1

Power / Engine displacement 158 kw / 0 ccm

Fuel type / Cylinder Electric / 0

Gearbox / Number of gears Direct drive / 1

Type of drive All-wheel drive

Type of vehicle SUV

Colour / colour code Magnetgrau

Doors / Seats 5 / 5

Upholstery type Alcantara / Leather

Colour of upholstery Black



Vehicle details

Maintenance booklet / proof	digital proof / complete	Next maintenance in	27,400 km
Last service on / at	02/2026 at 59,035 km		
Key is / should be	2 / 2	FZG documents	ZB#2 (B) was available (copy), ZB#1 (S) was not available.
		Letter No.	GS446329
Previous damage / Accident	Detectable	Repainting	None detectable
Inspection conditions	sufficient	Lifting equipment / pit	No
Test drive	Not performed	Engine function test	Performed
Manufacturer key number/ type code number	0588 / CAH 00009		
Emission standard	2017/1151;WLTP;reine Elektrofz	fine dust sticker	
Permitted total weight	3,170 kg	Empty weight	

Tyres

Mounted tyres

#	Tyre size	Type of tyre	Manufacturer	Tread depth
1)	265/45 R21 108H	Summer tyres on Light alloy	Bridgestone	5mm / 5mm
2)	265/45 R21 108H	Summer tyres on Light alloy	Bridgestone	5mm / 5mm

Additional tyres

#	Tyre size	Type of tyre	Manufacturer	Tread depth
1)	255/50 R20 109H	Winter tyres on Light alloy	Bridgestone	5mm / 5mm
2)	255/50 R20 109H	Winter tyres on Light alloy	Bridgestone	5mm / 5mm

Legend: Tread depth information for the left tire is listed first, for the right tire it is listed second on the axle in the direction of travel.



Equipment

Standard equipment

- Airbag for driver and front passenger
 - Acoustic vehicle warning system
 - Anti-lock braking system (ABS)
 - Audi connect emergency call & service with Audi connect Remote & Control
 - Electrically adjustable and heated exterior mirrors
 - Control buttons, matte black
 - Headliner in fabric in a specific color
 - Decorative inlays: Fine lacquer graphite grey
 - Door sills with aluminum inlay, front and rear, illuminated
 - Chassis: adaptive air suspension sport
 - front and rear floor mats
 - Electrically opening and closing tailgate
 - Transmission: 1-speed direct drive
 - Rear window, rear door and side windows in clear glass
 - Interior lighting
 - ISOFIX child seat anchors for front passenger seat
 - boot floor mat
 - 2-zone automatic climate control
 - Rear headrests (3)
 - CCS Type 2 charging socket
 - LED headlights with preparation for additional lighting functions and LED taillights
 - Steering column: Safety steering column
 - Package: Gloss Package
 - Progressive steering
 - Wheel: Tire repair kit
 - Radio accessories: Audi music interface
 - Tire pressure monitoring system
 - Fabric seat covers with effect
 - Seats: Front seats manually adjustable
 - Lane departure warning including emergency assist
 - 12-volt sockets
 - Separation net
 - Glazing: Front window in acoustic glazing
 - Glazing: Side and rear panes are made of heat-insulating glass.
- Airbag: Front side airbags and head airbag system
 - All-wheel drive "quattro"
 - Audi connect navigation & infotainment
 - Audi pre sense basic
 - Audi pre sense front
 - Exterior mirror housings in body color
 - third brake light
 - Roof edge spoiler
 - Parking aid plus with surround view
 - Electronic Stability Control (ESC)
 - Remote key, without Safelock
 - Removable luggage compartment cover
 - Cruise control system including speed limiter
 - Heated rear window
 - rear window wiper
 - Interior mirror, automatically dimming
 - ISOFIX child seat attachment and Top Tether for the rear seat
 - Headrests (2) height adjustable
 - Paint finish: Solid
 - Mode 3 charging cable for public charging 22 kW
 - Steering wheel: Double-spoke leather steering wheel with multifunction and paddle shifters
 - front center armrest
 - Plug and Charge
 - Wheel: On-board tools
 - Radio: MMI Navigation plus with MMI touch
 - Radio accessories: Audi sound system
 - Seat belts
 - Seats: Standard front seats
 - Front sun visor
 - Stationary air conditioning
 - S-Line bumpers in full paint finish (body color)
 - First aid kit including warning triangle and high-visibility vests
 - Camera-based traffic sign recognition
 - Electronic immobilizer



Extra equipment

- Audi virtual cockpit plus (In addition to the standard Audi virtual cockpit, the Audi virtual cockpit plus allows the display options "Dynamic", "Sport" and "Classic")
- Entry LED with projection (When the front/rear side doors are opened, the e-tron lettering is projected onto the ground)
- Instrument panel top and interior elements below in synthetic leather (instrument panel top and interior elements below in synthetic leather include: - switch panel top in black synthetic leather with tone-on-tone stitching - armrest in the doors and center console bottom in synthetic leather color matched to the respective interior color)
- Package: Interior S line (Sport seats in front, microfiber Dinamica/leather combination with contrast stitching and S embossing on the seatbacks - Sport leather steering wheel with multifunction and shift paddles, including perforated leather steering wheel grips, S line emblem and chrome trim - Comfort center armrest in front - Decorative inlays in matt brushed dark aluminum - Door sill trims with aluminum inlay front/rear, illuminated, with S lettering at the front - Headliner in black fabric - Floor mats front and rear with contrast stitching - Stainless steel pedals)
- Red painted brake calipers, 18 inch (red painted disc brakes front and rear in 18 inch)
- Red stitching, Audi Sport GmbH (Red stitching, Audi Sport GmbH, includes: - Contrast stitching in Express Red on the seat covers, the comfort center armrest, the armrests in the doors, the sides of the center console and on the steering wheel - Black seat belts with red trim (front and outer rear seats))
- Seats: Electric lumbar support for driver and front passenger seats (4-way)
- Seats: Front sports seats (with manual adjustment of seat height, seat longitudinal position, seat tilt, backrest tilt, headrest height and distance and belt height with pronounced seat side bolsters for better lateral support in curves, extendable thigh support and electric 4-way lumbar support)
- Singleframe Projection Light (The indirect light strip, which runs across the full width of the Audi Singleframe between the two headlights, makes the front of the vehicle appear even wider. The Audi rings are highlighted, making the vehicle unmistakable, and not just while driving. The Singleframe Projection Light is integrated into the dynamic coming-home/leaving-home function of the headlights, allowing the Audi Singleframe to be presented in a novel and futuristic way even when stationary.)
- Steering wheel: Sport leather steering wheel with multifunction, paddle shifters and steering wheel heating (paddle shifters allow manual changing of the driving modes. The steering wheel rim is also heated.)
- Automatically dimming, frameless interior mirror (Reduced glare can improve the perception of following traffic at night. - A reduced glare effect at night, among other factors, can help to recognize other vehicles in the interior mirror more quickly and clearly.)
- Charging cable with household plug (mains connection cable (length 1.6 m) with household plug type E/F)
- Charging cable with industrial plug CEE 16A / 400V (mains connection cable (length 0.9 m) with industrial plug 3-phase, red, angled design)
- Decorative inlays: Carbon square structure (for dashboard)
- e-tron compact charging system (The e-tron compact charging system is a so-called Mode 2 charging system and is designed for charging at wall sockets. It can also be used in mobile applications. LEDs on the control unit indicate the status of the charging system and the charging process. Depending on the household or industrial plug used and the market-specific power grid characteristics, a charging capacity of up to 3.6 kW is possible at the vehicle with a single-phase power grid. The charging capacity can be manually switched between 100% and 50%.)
- Electrically adjustable/folding/heated exterior mirrors, automatically dimming on both sides (with integrated LED turn signal - curb view function for passenger-side mirror - mirror glass convex, flat or aspherical)
- Exterior mirror housings in black
- Front seat heating (heats the center section of the seat and backrest, and, in conjunction with leather upholstery and sport seats, the side bolsters of the front seats. The seat heating for the driver and front passenger seats can be individually adjusted in multiple stages via the lower MMI touch response display, the climate control unit.)
- Glazing: Sun protection glazing, tinted (rear window, rear door and side windows tinted)
- LED headlights: Digital matrix LED headlights and LED taillights (Optional lane guidance system with lane lights and orientation lights; Extended lighting design with dynamic projections; Digital matrix LED technology; LED headlights front and rear with the following functionalities: - Visually enhanced daytime running lights - Low beam - High beam - Position lights - Dynamic turn signals - Cornering lights - All-weather lights - Maneuvering lights - Highway lights - Automatic dynamic headlight range control - Static cornering lights)
- Package: Ambient Lighting Package Plus (Six predefined color profiles are available for customization. An interactive and an individual color profile can also be activated. The interactive color profile is controlled by the respective Audi drive select modes. The individual color profile allows you to select from 30 colors. The contour and ambient lighting are adjusted separately.)
- Package: Black Optics Package Plus (dark Audi rings front and rear - black accents in the area of the Audi Singleframe - black accents in the area of the trim strips on the side windows and the front and rear bumpers)



- Telephone: Smartphone interface (The smartphone interface (Android Auto and Apple CarPlay) connects your smartphone to your Audi and seamlessly displays your smartphone content directly on the MMI display. Navigation, telephony, music, and selected third-party apps can be conveniently controlled via the MMI touchscreen and voice control. The connection can be established either using a suitable USB cable or wirelessly.)
- Tour Assistance Package (Adaptive Driving Assistance supports the driver with acceleration, braking, maintaining speed and distance, and lane keeping. Adaptive Cruise Control including speed limiter. Efficiency Assist supports the driver in anticipatory and therefore fuel-efficient driving. Evasive Steering Assist helps the driver steer the vehicle around an obstacle in a critical situation. Turn Assist. Emergency Assist. Camera-based speed limit display/traffic sign recognition.)
- Vehicle cable (The vehicle charging cable connects the control unit of the charging system to the vehicle and has a length of 4.5 m for the compact charging system and a length of 2.5 m for the connect charging system.)
- Wheel: Winter light alloy wheels (4 pieces) in 5-arm dynamic design, graphite grey, polished (size 9 J x 20, winter tires 255/50 R 20 not suitable for snow chains, maximum permissible speed 210 km/h)
- Panoramic glass roof (The two-part glass roof features extra-large, tinted glass panels. These lend the interior an exclusive atmosphere and underscore the progressive design with a pleasant lighting effect. When open, the panoramic glass roof also ensures a refreshing interior climate. Furthermore, the glossy black roof surface emphasizes the progressive exterior design. The glass element can be opened and closed electrically. The light-blocking sunshades are operated with the same ease.)
- Seat covers in Dinamica Frequency microfiber/leather combination with S embossing (center section of the front seats and the two outer rear seats in black Dinamica Frequency microfiber - side bolsters, headrests, middle rear seat and center armrest in black leather with contrasting stitching - S embossing in the backrests of the front seats. Dinamica Frequency microfiber is a breathable fleece with a sporty look.)
- Wheel: Light alloy wheels, 21" 5-arm aero structure, black metallic (9.5J x 21, 265/45 R21 tires. An offer from Audi Sport GmbH)

Brief expert findings

Documents submitted	At the time of the inspection, the vehicle registration certificate Part 2 (title) was available, but the vehicle registration certificate Part 1 (document) was not. (Copy)
VIN comparison	The vehicle identification number (VIN) was read from the vehicle and its conformity with the submitted documents was confirmed by the undersigned during the inspection.
Inspection	The inspection conditions were sufficient for the assessment of the vehicle. No lifting equipment or pit was available for inspecting the vehicle. Therefore, inspection of the vehicle's underside was only possible to a limited extent.
Test drive	No test drive/shunting maneuver was carried out during the inspection of the vehicle.
Engine function test	An engine test run was performed.

Value reducing factors

No.	Component group	Description
1	Side panel - rear right side	Side panel - Scratch(es) - Smart repair

Wear and tear

No.	Component group	Description
1	Bonnet	Bonnet - Stone chips - No deduction
2	Interior	Interior - Scratch(es) - No deduction
3	Vehicle glazing	Windscreen - Stone chips - No deduction
4	Sill - left side	Sill - Scratch(es) - No deduction
5	Rear bumper	Rear bumper - Scratch(es) - No deduction

The vehicle shows signs of wear and tear commensurate with its age and use.



Accident damages

No. Accident

1 Front

Order/Scope of Order

An order was placed to prepare a sales report for the described vehicle. This report includes the following:

- Description of key vehicle information
- Documentation of equipment features
(*Delivery by third-party service providers*)
- Documentation of damage, defects, missing parts
- Documentation of prior damage, unrepaired prior damage, repainting
- A brief visual or functional inspection of the equipment details, if possible.
(*Functional testing of driver assistance systems is not included in the scope of services!*)
- a photographic documentation of the vehicle

Basis for the order

This product is based on the guidelines for vehicle returns and valuations published by Alphabet Fleet GmbH. The expert makes the specific findings in each individual case objectively, within the framework of the prescribed standards, based on their own expertise.

The vehicle inspection takes place in a fully assembled, unassembled state.

Damage or defects that can only be detected during disassembly/diagnostic work or through further investigation remain within the realm of prognostic risk. An increased risk exists due to concealed defects caused by fraudulent misrepresentation and which were not identifiable by the expert.

Damage or defects resulting from normal use or wear and tear of the vehicle will be accepted in accordance with the applicable standard.

There was no explicit identification or monetary consideration of the expected features within the product.

Features which, in their nature and extent, slightly exceed normal use but do not constitute unacceptable damage, will be documented and indicated as signs of wear, if applicable.

Damage or defects that, according to the applicable standard, can no longer be attributed to normal use or wear and tear are listed under "Value Reducing Factors" in the product description.

Depending on the product specification, a monetary ID can be provided. If this takes place, the costs can be 100% d or pro rata depending on the vehicle's age and mileage.

Previous damages

Non-repaired previous damages were found at the vehicle. The necessary repair costs are listed in the expert report or if necessary, are listed in detail in a separately enclosed repair cost calculation.

Comments

- Die Unterbodenbesichtigung war nur ebenerdig und eingeschränkt möglich.
- Mehrkosten möglich .



Figure 1: Diagonal front (left)



Figure 2: Diagonal front (right)



Figure 3: Diagonal rear (left)



Figure 4: Diagonal rear (right)



Figure 5: Interior - front



Figure 6: Interior - rear



Figure 7: Instrument cluster



Figure 8: Instrument panel



Figure 9: Interior 360° view



Figure 10: Cargo area



Figure 11: VIN



Figure 12: Mounted tyres



Figure 13: Documents

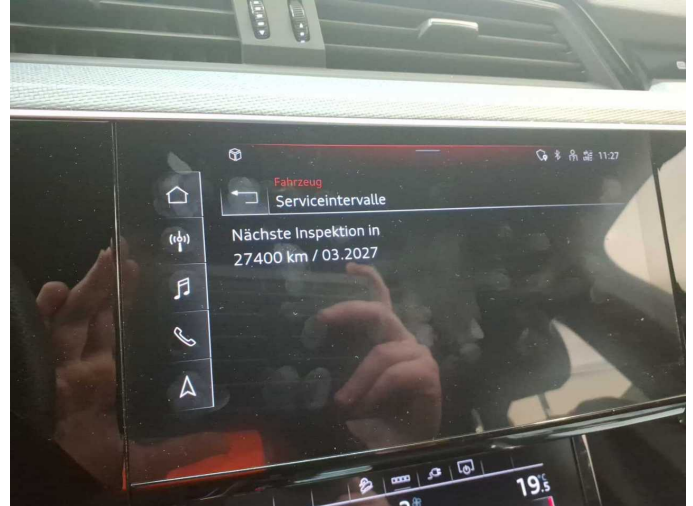


Figure 14: Documents



Figure 15: Documents



Figure 16: Additional tyres

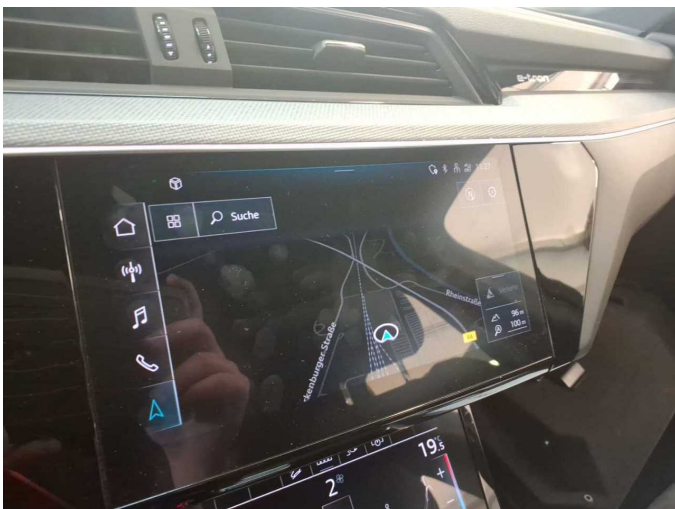


Figure 17: Navigation

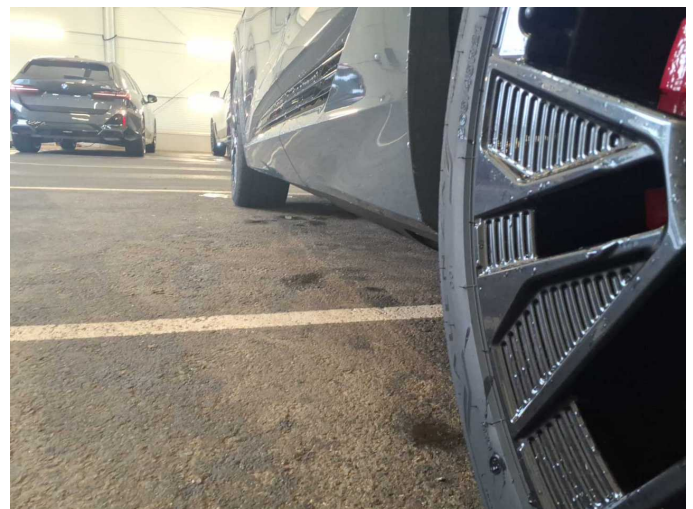


Figure 18: Misc.



Figure 19: Misc.



Figure 20: Misc.



Figure 21: Misc.



Figure 22: Misc.



Figure 23: Misc.



Figure 24: Misc.



Figure 25: Misc.



Figure 26: Misc.

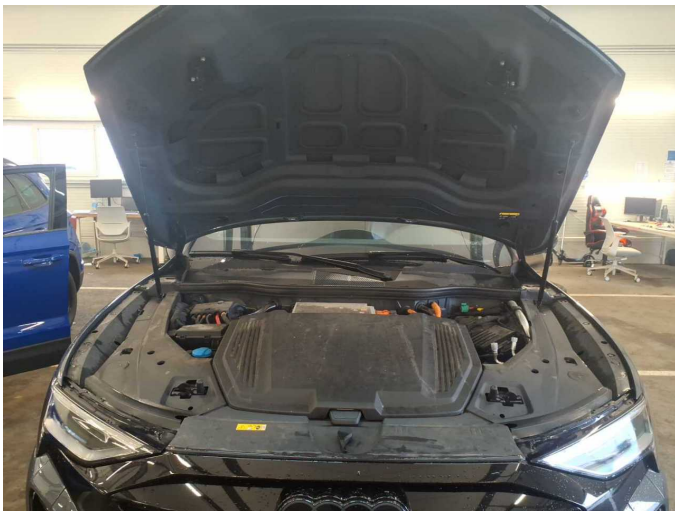


Figure 27: Misc.

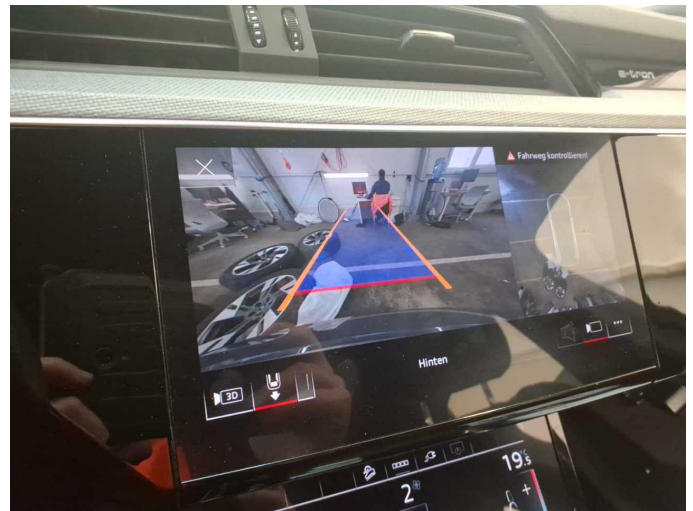


Figure 28: Misc.

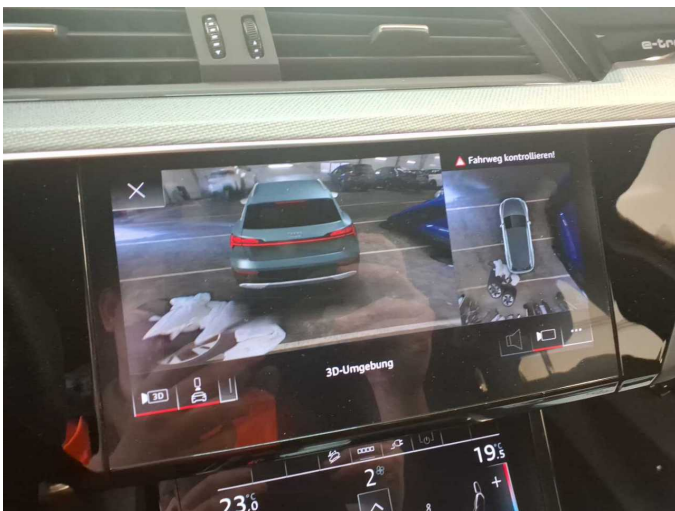


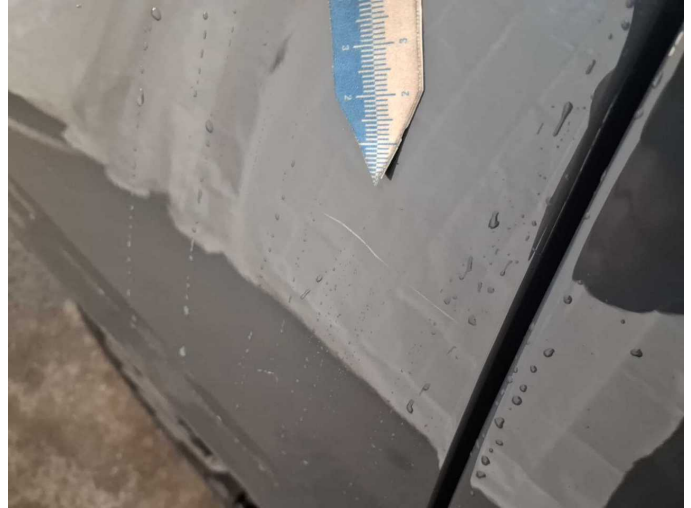
Figure 29: Misc.



Damage 1: Side panel - rear right side: Side panel - Scratch(es) - Smart repair



Damage 1: Side panel - rear right side: Side panel - Scratch(es) - Smart repair



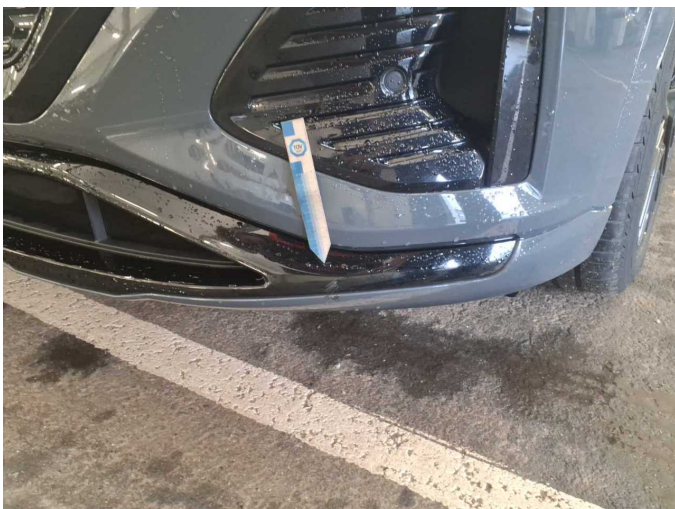
Damage 1: Side panel - rear right side: Side panel - Scratch(es) - Smart repair



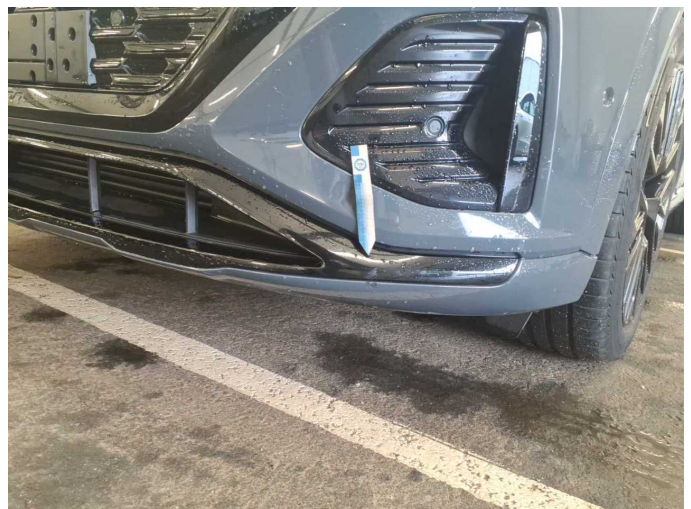
Damage 1: Side panel - rear right side: Side panel - Scratch(es) - Smart repair



Accident 1: Front



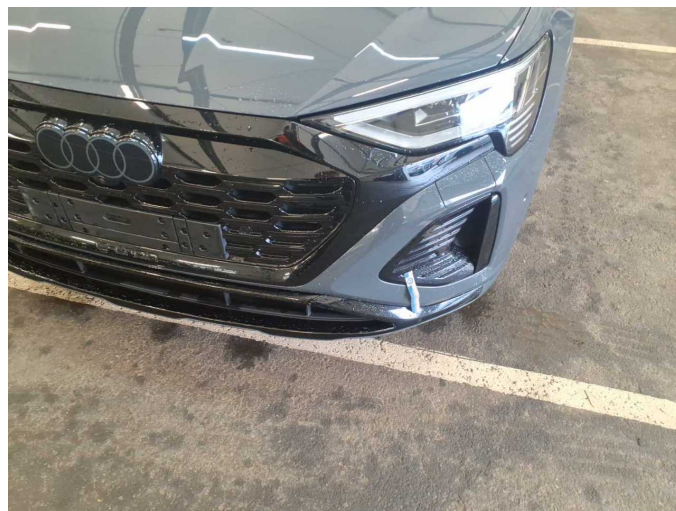
Accident 1: Front



Accident 1: Front



Accident 1: Front



Accident 1: Front



Wartungshistorie

(gemäß Auftraggeber Informationen)

Fahrgestellnummer: WAUZZZGE6RB004863
Hersteller / Modell: AUDI AUDI Q8 e-tron 50 quattro S line

Datum	KM-Stand	Beschreibung
02.02.2026	59.035	Regelwartungsdienst; Wartung Sonstiges
12.11.2025	54.352	Systemtest/Eigendiagnose
20.02.2025	35.511	Bremsflüssigkeit; Bremsflüssigkeit ern
20.11.2024	28.656	Regelwartungsdienst; Wartung Sonstiges