

Expertise

Protocol number: 45506908
Order No. / Reference: 26287142
Inspection date: 19 May 2026

Manufacturer: Skoda

Model: Kodiaq 1.5 TSI mHEV DSG Selection

VIN: TMBJB9PS4ST060455



Vehicle details

Manufacturer / Type / Model / Equipment

Skoda Kodiaq 1.5 TSI mHEV DSG Selection

Vehicle Identification number TMBJB9PS4ST060455

Mileage (Read) 29,636 km

First registration 20 Feb 2025

Number of holders 1

Power / Engine displacement 110 kw / 1,498 ccm

Fuel type / Cylinder Hybrid Petrol / E / 4

Gearbox / Number of gears Automatic / 7

Type of drive Front drive

Type of vehicle SUV

Colour / colour code Black-Magic Perleffekt

Doors / Seats 5 / 7

Upholstery type Artificial leather

Colour of upholstery Brown

Vehicle with smoke odor no



Vehicle details			
Maintenance booklet / proof	digital proof / complete	Next maintenance in	29,900 km
Last service on / at	03/2026 at 29,458		
Key is / should be	2 / 2	FZG documents	ZB#2 (B) was available (copy), ZB#1 (S) was not available.
		Letter No.	HM594528
Previous damage / Accident	None detectable	Repainting	None detectable
Inspection conditions	sufficient	Lifting equipment / pit	yes
Test drive	Not performed	Engine function test	Performed
Manufacturer key number/ type code number	8004 / AYD 00217		
Emission standard	EURO6;WLTP;EB;PI/CI;M, N1, N2	fine dust sticker	
Permitted total weight	2,170 kg	Empty weight	

Tyres

Mounted tyres				
#	Tyre size	Type of tyre	Manufacturer	Tread depth
1)	235/55 R18 104V	Winter tyres on Light alloy	Continental	6mm / 6mm
2)	235/55 R18 104V	Winter tyres on Light alloy	Continental	7mm / 7mm
Additional tyres				
#	Tyre size	Type of tyre	Manufacturer	Tread depth
1)	235/55 R18 100V	Summer tyres on Light alloy	Kumho	4mm / 4mm
2)	235/55 R18 100V	Summer tyres on Light alloy	Kumho	5mm / 5mm
Replacement				
Typ	Tyre size	Type of tyre	Manufacturer	Tread depth
N	145/85 R18 103T	Summer tyres on Steel	Sonstige	3 mm

Legend: Tread depth information for the left tire is listed first, for the right tire it is listed second on the axle in the direction of travel.

TÜV SÜD Auto Partner GmbH
Wiesenring 2
04159 Leipzig

Inspection location
Mosolf SE & Co.KG
Faberweg 25
73230 Kirchheim unter Teck



Equipment



Standard equipment

- Turn assist including evasive steering support (The turn assist monitors oncoming vehicles when you turn left (for left-hand drive vehicles). If there is an immediate danger, it brings the vehicle to a standstill and a warning signal sounds.)
- Airbag, front and rear head airbags
- Airbag, front side airbags
- Trailer hitch preparation (including trailer stabilization)
- Anti-lock braking system (ABS)
- Traction control (ASR)
- Attention and fatigue detection
- Exterior mirrors and door handles painted in body color
- Hill start assist
- Glasses compartment in the headliner
- Digital Cockpit Plus (10")
- Third brake light
- Electronic transverse differential lock (XDS+)
- Electric windows front and rear (including anti-pinch protection and child safety lock)
- Cruise control
- Illuminated glove compartment (and additional storage compartment on the passenger side)
- Automatically dimming interior mirror with sensors, frameless (with USB)
- Isofix anchorage on the outer rear seats including top tether
- Front and rear headrests are height-adjustable.
- Crossroad Assist
- LED taillights with black strip between the lights
- Steering wheel: Leather steering wheel with multifunction buttons including paddle shifters (height and reach adjustable)
- Front center armrest including cup holder
- Multi-collision brake
- Front and rear parking sensors with maneuvering brake function
- Radio: Basic infotainment system (music system with digital radio reception DAB+ - 10" infotainment display - Bluetooth hands-free system - voice control - 8 speakers)
- Radio accessories: Wireless SmartLink (Android Auto and Apple CarPlay)
- Tire mobility kit (tire repair spray incl. compressor)
- Wheels: 18" Mazeno Aero alloy wheels, silver polished (7.5Jx18, ET40, with 235/55 R18 100V tires - with matte black aero covers)
- Seats: Heated front seats
- Seats: Remote release of the rear seat backrests (2nd row) in the boot
- Seats: Front seats are height-adjustable, including manually adjustable lumbar support (and mechanical seat depth adjustment)
- Sun visors with illuminated make-up mirror on driver and passenger side
- Lane keeping assistant (Lane Assist)
- Lane change assist (Side Assist) and parking assist, as well as exit warning.
- Storage compartments in the door panels with bottle holders (1.5 l) and compartments for high-visibility vests, front and back.
- Airbag, center airbag front
- Airbag for driver and front passenger (passenger airbag can be deactivated)
- Ambient lighting in the interior and logo projector on the exterior (ambient lighting for dashboard, decorative trim strips and storage compartments in the front doors as well as footwell with selectable color climate)
- Electrically adjustable, heated and folding exterior mirrors (including automatic dimming on the driver's side)
- Hydraulic brake assist
- Roof rails, black
- Digital rotary controls (Smart Dials)
- Electronic parking brake including auto-hold function
- ESC Electronic Stability Control
- Front radar assistant including city emergency braking function with pedestrian and cyclist detection
- Transmission: 7-speed dual-clutch transmission (DSG)
- Heated rear window
- rear window wiper
- Intelligent Speed Assist (ISA)
- Isofix anchorage on the front passenger seat
- Electric child safety lock for the rear doors and windows
- Climatronic air conditioning (3-zone) (separately adjustable for driver, front passenger and rear seats with allergen and odor filter)
- LED headlights with driving light assistant (all-weather light - coming/leaving home function - daytime running light with assist driving light - fog and cornering light)
- Rear center armrest with cup holders
- Engine drag torque control (MSR)
- Otto particulate filter
- Phonebox with inductive fast charging function for 2 smartphones including cooling
- Radio accessories: 2 x USB-C ports in the front and 2 x USB-C charging ports in the rear (USB-C charging port on the rearview mirror)
- Umbrella compartment in the driver's door
- Rain sensor and driving light assistant (Easy Light Assist)
- Tire pressure monitoring
- Rear view camera
- Electromechanical power steering
- Seat belts (Height-adjustable three-point seat belts in the front - Three three-point seat belts in the rear - Seat belt reminder indicators on the front and rear seats)
- Seats: Rear seat backrest split 40:20:40 and foldable (seats longitudinally adjustable, backrest angle adjustable (not applicable to 3rd row of seats))



- 12V power outlet in the luggage compartment and on the back of the center console
- Pockets on the back of the front seats including smartphone pockets
- Textile floor mats
- Lashing eyes in the luggage compartment
- Immobiliser
- Electric auxiliary heater

- Skoda Care Connect (SOS emergency call function (eCall, including automatic activation in the event of an accident with airbag deployment) - Mobility service (connection option for rapid assistance in case of breakdown) - Information service (connection option to the hotline for all questions relating to vehicle functions) - Free remote vehicle access for three years (Remote Access) with access to vehicle data functions via smartphone, e.g. parking position, activating hazard warning lights, current fuel level, etc.)
- Traffic sign recognition
- Preparation for an alcohol test
- Central locking including remote control integrated into the key (EASY START (keyless start-stop system))

Extra equipment

- Swiveling trailer hitch including trailer stabilization (with trailer maneuvering assistant (Trailer Assist))
- Paint finish: Pearl effect
- Package: Driving Assistance Plus (Proactive occupant protection Travel Assist Plus with: - Adaptive Cruise Control ACC (cruise control system deleted) - Adaptive Lane Keeping Assist (Lane Assist+) - Traffic Jam and Emergency Assist - Intelligent Park Assist 5.0 - Trained Park Assist - 360° Surround View Cameras (Area View))
- Package: Family (Sunshade roller blind for rear side windows - Door edge protection - Removable waste bin for door trim - Tablet holder - Rear side airbag - Storage box for 2nd row of seats)
- Package: Comfort Plus (KESSY, keyless entry and start-stop system - anti-theft alarm system - electric tailgate operation with comfort opening - electrically adjustable front seats with memory function and electrically adjustable lumbar support - Canton sound system - 18" spare wheel - variable load floor)
- Package: Winter with sports steering wheel (Heated front and outer rear seats - Heated sports leather steering wheel with multifunction buttons and shift paddles)
- Seats: 3rd row of seats (7-seater) (incl. variable loading floor in the luggage compartment - deletion of storage compartments in the luggage compartment)

- Luggage net partition
- Interior Design Selection Suite Cognac (Seat covers in leather/ imitation leather in cognac, perforated with cognac-colored stitching - Pad in cognac-colored imitation leather - Decor in grey and door trim in cognac - Headliner grey)
- Package: Driving Assistance Plus (Proactive occupant protection Travel Assist Plus with: - Adaptive Cruise Control ACC (cruise control system deleted) - Adaptive Lane Assist (Lane Assist+) - Traffic Jam and Emergency Assist - Intelligent Park Assist 5.0 - Trained Park Assist - Remote Park Assist - 360° Surround View Cameras)
- Package: Infotainment Plus (Navigation system - 13" infotainment display - Display cleaner - Head-up display - Infotainment Online (3-year subscription) - ChatGPT integration)
- Package: Light & Sight (Matrix LED headlights - Dynamic Light Assist - LED taillights with animated turn signals and red crystal structure strip between the lights)
- Panoramic sliding sunroof, electric, including sunshade (no glasses compartment in the headliner)
- Wheels: 18" alloy wheels Soira Aero, anthracite polished (7.5Jx18, ET40, with tires 235/55 R18 100V)
- Auxiliary heater with remote control

Brief expert findings

Documents submitted	At the time of the inspection, the vehicle registration certificate Part 2 (title) was available, but the vehicle registration certificate Part 1 (document) was not. (Copy)
VIN comparison	The vehicle identification number (VIN) was read from the vehicle and its conformity with the submitted documents was confirmed by the undersigned during the inspection.
Inspection	The inspection conditions were sufficient for the assessment of the vehicle. Lifting equipment and/or a pit were available for examining the vehicle.
Test drive	No test drive/shunting maneuver was carried out during the inspection of the vehicle.
Engine function test	An engine test run was performed.

Value reducing factors

No.	Component group	Description
1	Trim / covers	Boot lid - interior trim - Loose - Repair



Wear and tear

No.	Component group	Description
1	Front bumper	Front bumper - Stone chips - No deduction
2	Vehicle glazing	Windscreen - Stone chips - No deduction
3	Body	Body - Scratch(es) - No deduction

The vehicle shows signs of wear and tear commensurate with its age and use.

Order/Scope of Order

An order was placed to prepare a sales report for the described vehicle. This report includes the following:

- Description of key vehicle information
- Documentation of equipment features
(*Delivery by third-party service providers*)
- Documentation of damage, defects, missing parts
- Documentation of prior damage, unrepaired prior damage, repainting
- A brief visual or functional inspection of the equipment details, if possible.
(*Functional testing of driver assistance systems is not included in the scope of services!*)
- a photographic documentation of the vehicle

Basis for the order

This product is based on the guidelines for vehicle returns and valuations published by Alphabet Fleet GmbH. The expert makes the specific findings in each individual case objectively, within the framework of the prescribed standards, based on their own expertise.

The vehicle inspection takes place in a fully assembled, unassembled state.

Damage or defects that can only be detected during disassembly/diagnostic work or through further investigation remain within the realm of prognostic risk. An increased risk exists due to concealed defects caused by fraudulent misrepresentation and which were not identifiable by the expert.

Damage or defects resulting from normal use or wear and tear of the vehicle will be accepted in accordance with the applicable standard.

There was no explicit identification or monetary consideration of the expected features within the product.

Features which, in their nature and extent, slightly exceed normal use but do not constitute unacceptable damage, will be documented and indicated as signs of wear, if applicable.

Damage or defects that, according to the applicable standard, can no longer be attributed to normal use or wear and tear are listed under "Value Reducing Factors" in the product description.

Depending on the product specification, a monetary ID can be provided. If this takes place, the costs can be 100% or pro rata depending on the vehicle's age and mileage.

Previous damages

No apparent prior damage that had been repaired could be found on the vehicle.

Comments

Winter - Radsatz ist kein Bestandteil des Lieferumfangs.



Figure 1: Diagonal front (left)



Figure 2: Diagonal front (right)



Figure 3: Diagonal rear (left)



Figure 4: Diagonal rear (right)

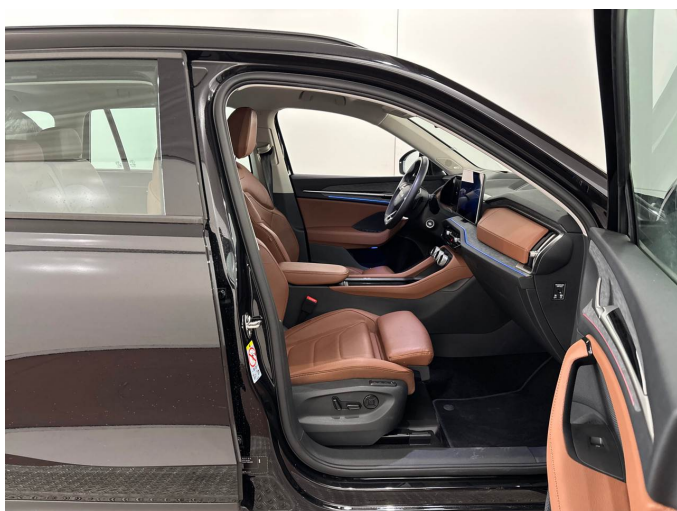


Figure 5: Interior - front



Figure 6: Interior - rear



Figure 7: Instrument cluster



Figure 8: Instrument cluster



Figure 9: Instrument panel



Figure 10: Interior 360° view



Figure 11: Cargo area



Figure 12: VIN



Figure 13: Mounted tyres

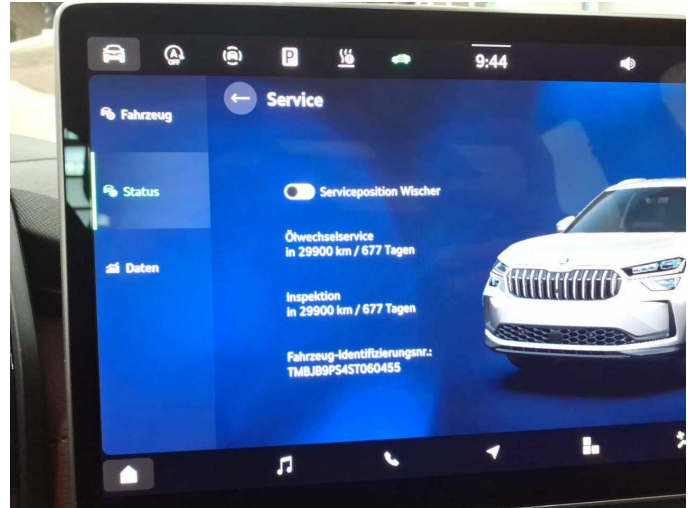


Figure 14: Documents

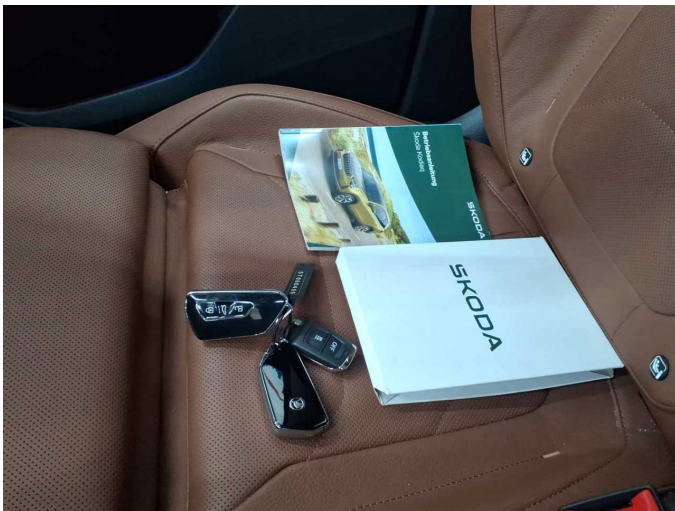


Figure 15: Documents



Figure 16: Additional tyres

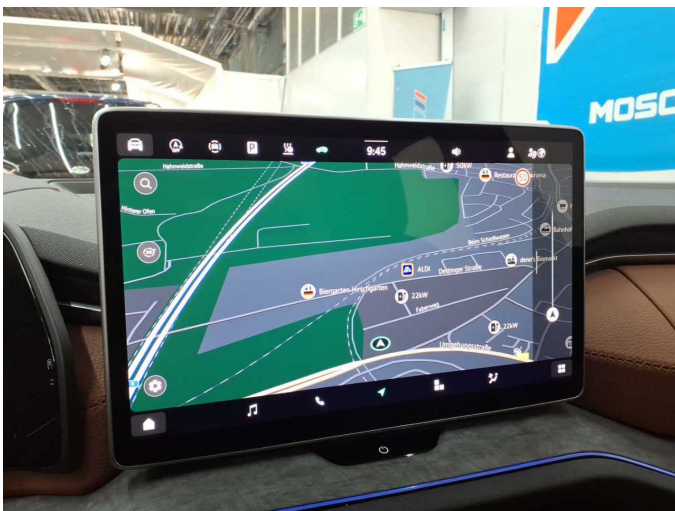


Figure 17: Navigation



Figure 18: Misc.



Figure 19: Misc.



Figure 20: Misc.



Figure 21: Misc.



Figure 22: Misc.

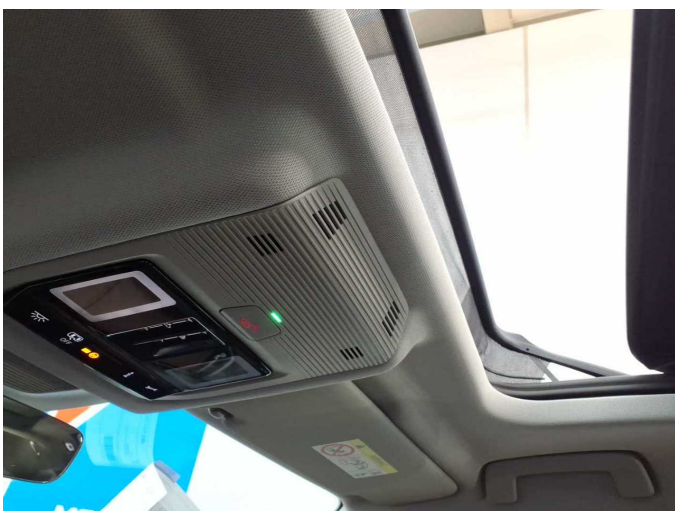


Figure 23: Misc.



Figure 24: Misc.



Figure 25: Misc.



Figure 26: Misc.



Figure 27: Misc.



Figure 28: Misc.



Figure 29: Misc.



Figure 30: Misc.



Figure 31: Misc.



Figure 32: Misc.

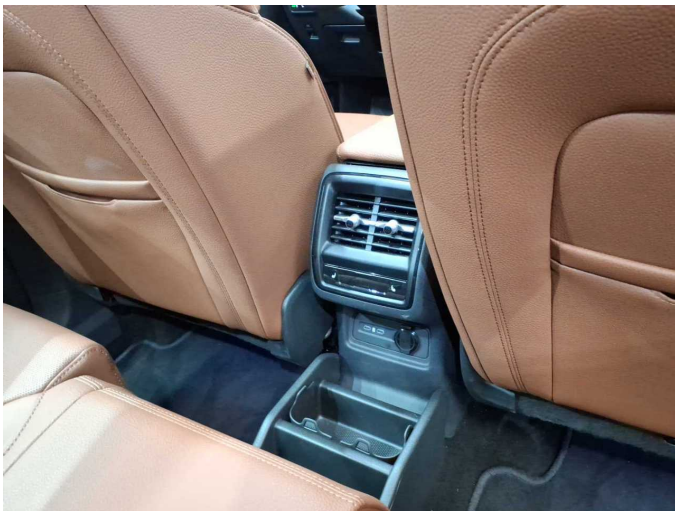


Figure 33: Misc.

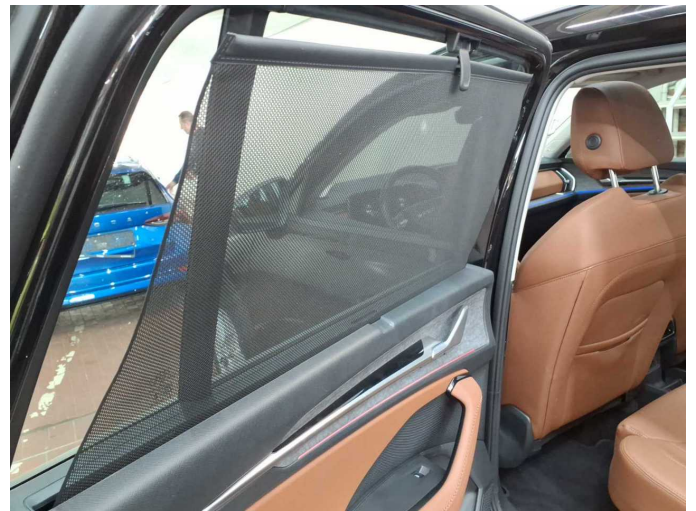


Figure 34: Misc.



Figure 35: Misc.



Figure 36: Misc.



Figure 37: Misc.



Figure 38: Misc.



Figure 39: Misc.



Figure 40: Misc.



Figure 41: Misc.

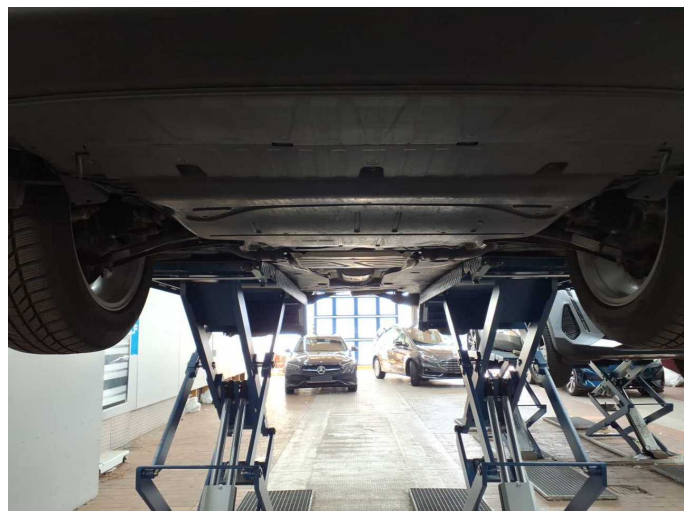
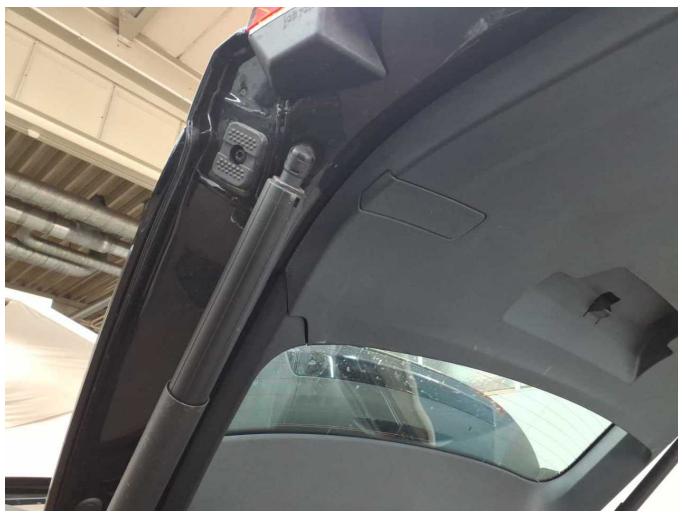


Figure 42: Misc.



Damage 1: Trim / covers: Boot lid - interior trim - Loose - Repair



Damage 1: Trim / covers: Boot lid - interior trim - Loose - Repair



Wartungshistorie

(gemäß Auftraggeber Informationen)

Fahrgestellnummer: TMBJB9PS4ST060455

Hersteller / Modell: SKODA SKODA Kodiaq 1.5 TSI mHEV DSG Selection

Datum	KM-Stand	Beschreibung
30.03.2026	29.458	Motoröl b. Wartung; Ölfilter ern; Regelwartungsdienst; Wartung Sonstiges