

Expertise

Protocol number: 46106675
Order No. / Reference: 26558607
Inspection date: 23 Jun 2026

Manufacturer: Renault

Model: Twingo Electric ZEN

VIN: VF1AH000569276657



Vehicle details

Manufacturer / Type / Model / Equipment

Renault Twingo Electric ZEN

Vehicle Identification number VF1AH000569276657

Mileage (Read) 47,466 km

First registration 16 May 2022

Number of holders 1

Power / Engine displacement 31 kw / 0 ccm

Fuel type / Cylinder Electric / 0

Gearbox / Number of gears Direct drive / 1

Type of drive Front drive

Type of vehicle Saloon car

Colour / colour code Pyrénées-Weiß

Doors / Seats 5 / 5

Upholstery type Cloth

Colour of upholstery Black-Anthracite



Vehicle details

Maintenance booklet / proof	Available / complete	Next maintenance in	
Last service on / at	05/2025 at 39,317 km		
Key is / should be	2 / 2	FZG documents	ZB#2 (B) was available (copy), ZB#1 (S) was not available.
		Letter No.	GN300751
Previous damage / Accident	Detectable	Repainting	Detectable
Inspection conditions	sufficient	Lifting equipment / pit	yes
Test drive	Not performed	Engine function test	Performed
Manufacturer key number/ type code number	3333 / BNZ 00017		
Emission standard	2017/1151;WLTP;reine Elektrofz	fine dust sticker	
Permitted total weight	1,514 kg	Empty weight	

Tyres

Mounted tyres

#	Tyre size	Type of tyre	Manufacturer	Tread depth
1)	165/65 R15 81T	All-season tyres on Steel rim with wheel cover	Kleber	3mm / 3mm
2)	185/60 R15 84T	All-season tyres on Steel rim with wheel cover	Kleber	5mm / 5mm

Replacement

Typ	Tyre size	Type of tyre	Manufacturer	Tread depth
	Tirefit	Expiration date 02/2028		

Legend: Tread depth information for the left tire is listed first, for the right tire it is listed second on the axle in the direction of travel.



Equipment

Standard equipment

- | | |
|---|--|
| <ul style="list-style-type: none"> • Airbag: Airbag for driver and front passenger • Alarm system pre-installation • Anti-lock braking system and brake assist • On-board computer • Easy-Link • Wheels: 15" steel with "Vegas" wheel covers, diamond-cut with black finish • Flexicase: Open storage compartment between the front seats including USB port • Speed limiter • Back window, heater • ISOFIX/i-Size child seat attachments on the rear outer seats • Rear headrests (2) • Paint finish: Solid • LED daytime running lights • Height-adjustable steering wheel • Package: Interior Look Package Design "Golf Ball" (White) • Upholstery: Fabric "Eclipse" in black with white accents • Tire pressure monitoring system (TPMS) • Electric power steering • Seats: Split-folding rear seat backrest • Striping without • Electronic immobilizer | <ul style="list-style-type: none"> • Airbag: Side airbags with head and thorax protection at the front • Exterior mirror housings painted in body color • Third brake light • Electronic Stability Program (ESP) with Traction Control (ASR) • electric front windows • Flexicases: Closed glove compartment • ZE Voice sound simulator, speed-dependent • Transmission: Automatic reduction gearbox • rear window wiper • Air conditioning • Automatic air conditioning • Front headrests (2) • Charging cable: Type 2/Type 2 (Mode 3) charging cable with a length of 5.6 m • Light and rain sensor • Package: R & GO Climate Package • Tires: Mobility Kit • Side protection strips in black • Seats: Driver's seat height adjustable • Start-stop system • Door handles and rear spoiler painted in car color • Central locking with radio remote control |
|---|--|

Extra equipment

- All-season tyres

Brief expert findings

Documents submitted	At the time of the inspection, the vehicle registration certificate Part 2 (title) was available, but the vehicle registration certificate Part 1 (document) was not. (Copy)
VIN comparison	The vehicle identification number (VIN) was read from the vehicle and its conformity with the submitted documents was confirmed by the undersigned during the inspection.
Inspection	The inspection conditions were sufficient for the assessment of the vehicle. Lifting equipment and/or a pit were available for examining the vehicle.
Test drive	No test drive/shunting maneuver was carried out during the inspection of the vehicle.
Engine function test	An engine test run was performed.

Value reducing factors

No.	Component group	Description
1	Gearbox	Gear knob - Damaged - Replace
2	Rear bumper	Rear bumper - Scratch(es) - Smart repair
3	Wheel / tyres	Tyre - front (Rechts und links) - Does not meet the leasing specifications - Replace
4	Body	Body - Glued / labelled - De-glue / neutralise
5	Misc.	Inspection / maintenance - Due - Perform



Wear and tear

No.	Component group	Description
1	Wheel / tyres	Wheel cover - front right side - Scratched - No deduction
2	Wheel / tyres	Wheel cover - front left side - Scratch(es) - No deduction
3	Vehicle glazing	Windscreen - Stone chips - No deduction

The vehicle shows signs of wear and tear commensurate with its age and use.

Previous damages

No.	Previous damage	Extent of damage (Net)
1	Side right, Professionally repaired, Invoice of repair done Non-existent	

Repainting

No.	Repainting
1	Side panel - rear right side, Professionally carried out, Invoice of repair done Non-existent

Paint coat thickness measurement

Side panel - rear right side	832 µm
------------------------------	--------

Order/Scope of Order

An order was placed to prepare a sales report for the described vehicle. This report includes the following:

- Description of key vehicle information
- Documentation of equipment features
(*Delivery by third-party service providers*)
- Documentation of damage, defects, missing parts
- Documentation of prior damage, unrepaired prior damage, repainting
- A brief visual or functional inspection of the equipment details, if possible.
(*Functional testing of driver assistance systems is not included in the scope of services!*)
- a photographic documentation of the vehicle

Basis for the order

This product is based on the guidelines for vehicle returns and valuations published by Alphabet Fleet GmbH. The expert makes the specific findings in each individual case objectively, within the framework of the prescribed standards, based on their own expertise.

The vehicle inspection takes place in a fully assembled, unassembled state.

Damage or defects that can only be detected during disassembly/diagnostic work or through further investigation remain within the realm of prognostic risk. An increased risk exists due to concealed defects caused by fraudulent misrepresentation and which were not identifiable by the expert.

Damage or defects resulting from normal use or wear and tear of the vehicle will be accepted in accordance with the applicable standard.

There was no explicit identification or monetary consideration of the expected features within the product.

Features which, in their nature and extent, slightly exceed normal use but do not constitute unacceptable damage, will be documented and indicated as signs of wear, if applicable.

Damage or defects that, according to the applicable standard, can no longer be attributed to normal use or wear and tear are listed under "Value Reducing Factors" in the product description.

Depending on the product specification, a monetary ID can be provided. If this takes place, the costs can be 100% d or pro rata depending on the vehicle's age and mileage.



Previous damages

Professionally repaired previous damages were found at the vehicle.



Figure 1: Diagonal front (left)



Figure 2: Diagonal front (right)



Figure 3: Diagonal rear (left)



Figure 4: Diagonal rear (right)

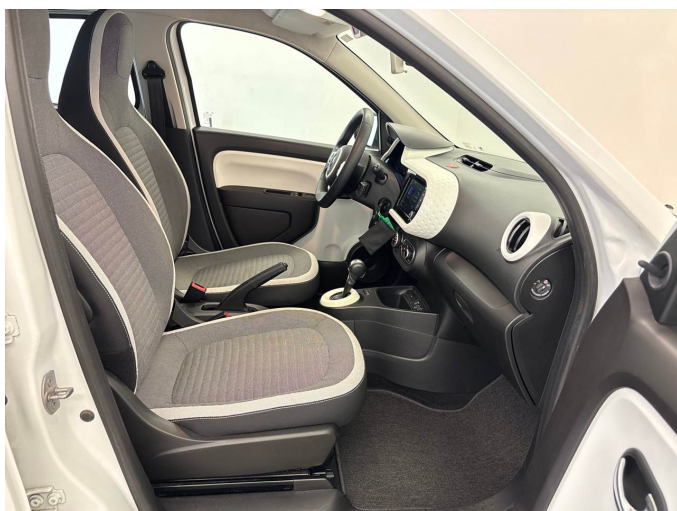


Figure 5: Interior - front



Figure 6: Interior - rear



Figure 7: Instrument cluster



Figure 8: Instrument panel



Figure 9: Interior 360° view



Figure 10: Cargo area

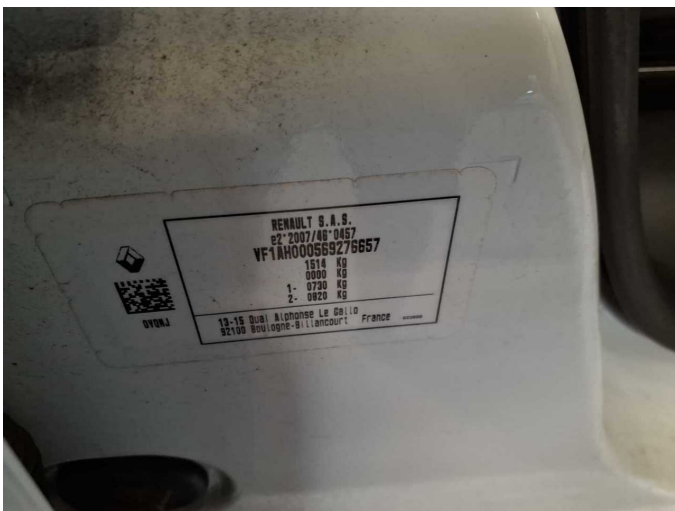


Figure 11: VIN



Figure 12: Mounted tyres



Figure 13: Documents

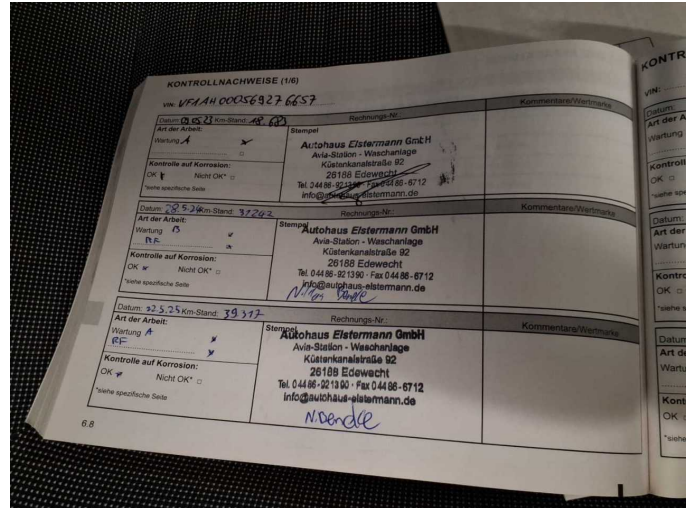


Figure 14: Documents



Figure 15: Navigation



Figure 16: Misc.

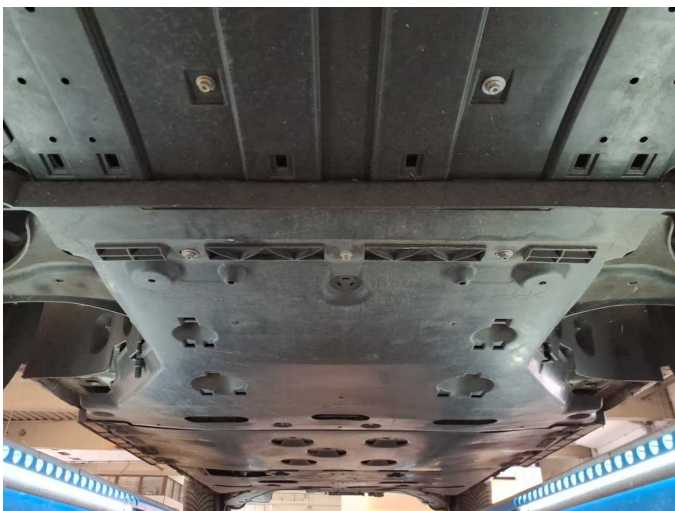


Figure 17: Misc.



Figure 18: Misc.



Figure 19: Misc.



Figure 20: Misc.



Figure 21: Misc.



Damage 1: Gearbox: Gear knob - Damaged - Replace



Damage 1: Gearbox: Gear knob - Damaged - Replace



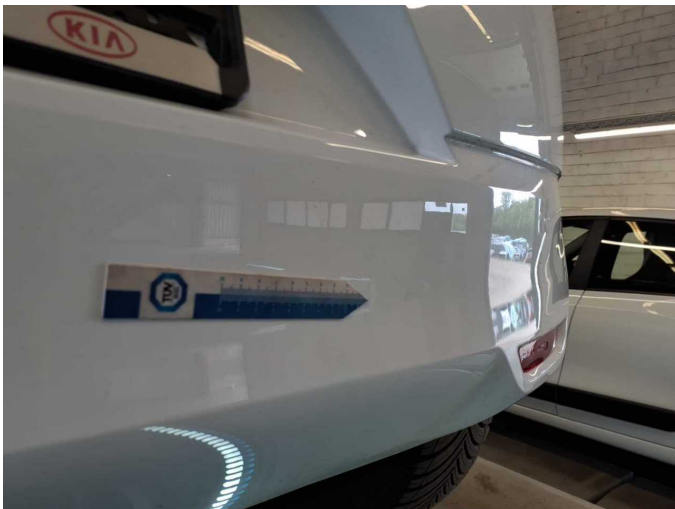
Damage 2: Rear bumper: Rear bumper - Scratch(es) - Smart repair



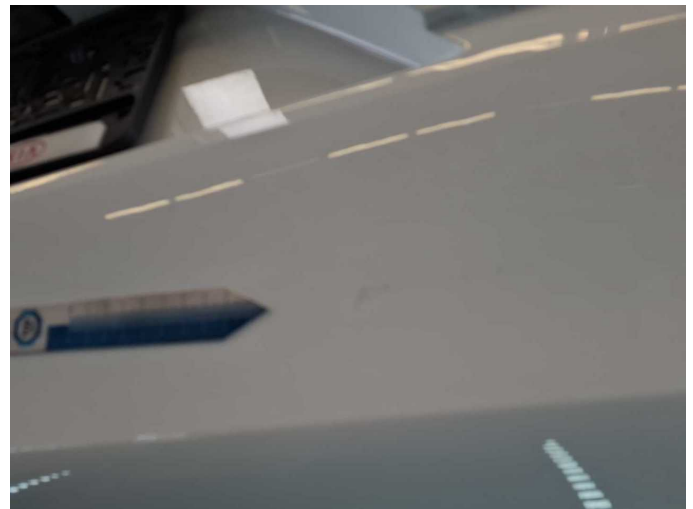
Damage 2: Rear bumper: Rear bumper - Scratch(es) - Smart repair



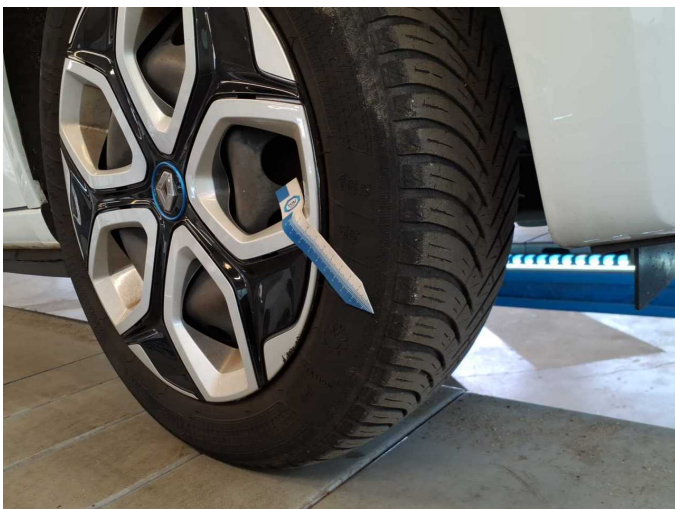
Damage 2: Rear bumper: Rear bumper - Scratch(es) - Smart repair



Damage 2: Rear bumper: Rear bumper - Scratch(es) - Smart repair



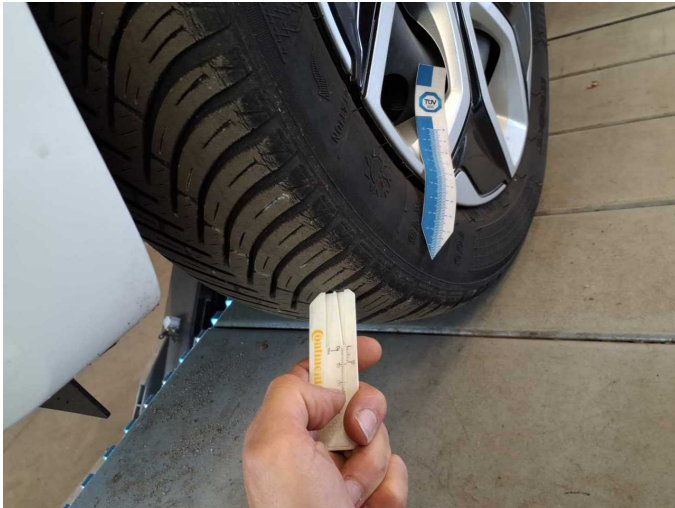
Damage 2: Rear bumper: Rear bumper - Scratch(es) - Smart repair



Damage 3: Wheel / tyres: Tyre - front (Rechts und links) - Does not meet the leasing specifications - Replace



Damage 3: Wheel / tyres: Tyre - front (Rechts und links) - Does not meet the leasing specifications - Replace



Damage 3: Wheel / tyres: Tyre - front (Rechts und links) - Does not meet the leasing specifications - Replace



Damage 3: Wheel / tyres: Tyre - front (Rechts und links) - Does not meet the leasing specifications - Replace



Damage 4: Body: Body - Glued / labelled - De-glug / neutralise



Damage 4: Body: Body - Glued / labelled - De-glug / neutralise



Damage 4: Body: Body - Glued / labelled - De-glug / neutralise



Damage 4: Body: Body - Glued / labelled - De-glug / neutralise



Damage 5: Misc.: Inspection / maintenance - Due - Perform



Damage 5: Misc.: Inspection / maintenance - Due - Perform



Repainting 1: Side panel - rear right side



Repainting 1: Side panel - rear right side