

Expertise

Protocol number: 45799602
Order No. / Reference: 26327123
Inspection date: 22 May 2026

Manufacturer: Volkswagen

Model: Passat Variant 2.0 TDI SCR DSG Business

VIN: WVVZZZ3CZME123325



Vehicle details

Manufacturer / Type / Model / Equipment

Volkswagen Passat Variant 2.0 TDI SCR DSG Business

Vehicle Identification number WVVZZZ3CZME123325

Mileage (Read) 135,477 km

First registration 24 Jun 2021

Number of holders 1

Power / Engine displacement 110 kw / 1,968 ccm

Fuel type / Cylinder Diesel / 4

Gearbox / Number of gears Automatic / 7

Type of drive Front drive

Type of vehicle Station wagon

Colour / colour code Mangangrau-metallic (B7R)

Doors / Seats 5 / 5

Upholstery type Cloth

Colour of upholstery Black-Grey



Vehicle details			
Maintenance booklet / proof	digital proof / complete	Next maintenance in	23,200 km
Last service on / at	01/2026 at 128,676 km		
Key is / should be	2 / 2	FZG documents	ZB#2 (B) was available (copy), ZB#1 (S) was not available.
		Letter No.	GC353755
Previous damage / Accident	Detectable	Repainting	Detectable
Inspection conditions	sufficient	Lifting equipment / pit	No
Test drive	Not performed	Engine function test	Performed
Manufacturer key number/ type code number	0603 / BQS 00836		
Emission standard	EURO6;WLTP;AP;PI/CI; M, N1 I	fine dust sticker	
Permitted total weight	2,200 kg	Empty weight	

Tyres

Mounted tyres				
#	Tyre size	Type of tyre	Manufacturer	Tread depth
1)	215/60 R16 99H	Winter tyres on Light alloy	Continental	6mm / 6mm
2)	215/60 R16 99H	Winter tyres on Light alloy	Continental	6mm / 6mm
Additional tyres				
#	Tyre size	Type of tyre	Manufacturer	Tread depth
1)	215/60 R16 95V	Summer tyres on Light alloy	Continental	3mm / 3mm
2)	215/60 R16 95V	Summer tyres on Light alloy	Continental	3mm / 3mm
Replacement				
Typ	Tyre size	Type of tyre	Manufacturer	Tread depth
	Tirefit	Expiration date 04/2025		

Legend: Tread depth information for the left tire is listed first, for the right tire it is listed second on the axle in the direction of travel.



Equipment

Standard equipment

- Airbag for driver and front passenger
- Anti-lock braking system (ABS)
- Adaptive Cruise Control (ACC) "stop & go", including speed limiter
- third brake light
- Headliner in Mistral Grey
- Parking aid - warning signals for obstacles in the front and rear area
- Automatic headlight control
- Pedestrian detection
- Transmission: 7-speed DSG
- ISOFIX mounting points
- Air conditioning
- Rear headrests (3)
- Front headrests
- LED taillights
- Steering wheel: Multifunction steering wheel in leather, with paddle shifters
- Mesh partition
- Emergency braking assistant "Front Assist" (for automatic distance control ACC up to 210 km/h)
- Upholstery: Fabric "Weave"
- Radio accessories: Digital radio reception DAB+
- Rain sensor
- Wheels: 4 light alloy wheels "Sepang" 6.5 J x 16
- Rear bench seat, undivided, backrest asymmetrically split and foldable, with center armrest
- Power steering
- Seats: Lumbar support in the front
- Start-stop system
- Telephone interface
- First aid kit, warning triangle and high-visibility vest
- Electronic immobilizer
- Airbag, head airbag system for front and rear passengers
- App-Connect
- Cup holders (2) front
- Hill start assist
- Chrome trim on the side windows
- Diesel particulate filter
- Electronic parking brake including auto-hold function
- Electronic stability program and electromechanical brake booster
- Adjustable luggage compartment floor
- Interior lights front and rear with switch-off delay and dimming function
- Instrument cluster with electronic speedometer, odometer and trip odometer, tachometer
- LED fog lights and cornering lights
- LED headlights with daytime running lights
- Headlight range control
- Fatigue detection
- Non-smoking version
- Emergency call service
- Package: Light and Sight Package "Plus"
- Proactive occupant protection system in conjunction with "Front Assist"
- Tire pressure monitoring system (passive)
- LED taillights
- Gearshift knob in leather
- Keyless start system without safe locking
- Seat belts: Three-point automatic seat belt
- Seats: Front seats are height-adjustable
- 12V power outlet on the rear of the center console
- Textile floor mats
- Warning tone and light for unfastened seat belts front and rear



Extra equipment

- App-Connect Wireless
- Roof rails, silver anodized
- Digital Cockpit, multi-colored (various info profiles selectable)
- Windscreen is wirelessly heated and infrared-reflecting.
- Removable luggage compartment protective mat (back of the rear seat backrest with black rubber coating)
- Paint finish: Metallic
- Package: "Business Premium" package incl. navigation (from Business trim level) (2 USB-C ports in the front, 1 USB-C charging port in the rear, 230V socket, App-Connect incl. wireless, Apple CarPlay, Android Auto, "Travel Assist" driver assistance system and "Lane Assist" lane keeping system, Air Care Climatronic with 3-zone temperature control, allergen filter and rear controls, lumbar support in the front, electric on the driver's side, massage function on the driver's side, "Rear View" reversing camera, heated windshield washer nozzles, Comfort telephone interface, inductive charging function, heated front seats)
- Exterior mirrors with ambient lighting and passenger-side mirror lowering function (foldable and heated - dimming on the driver's side)
- Chassis: Rear suspension with fully automatic level control
- Tailgate with electric opening and closing, electric opening for luggage compartment cover
- Navigation system "Discover Media" incl. "Streaming & Internet"
- Proactive occupant protection system and lane change assistant "Side Assist" (Proactive occupant protection system in conjunction with "Front Assist" and "Side Assist" - lane change assistant "Side Assist" and parking assistant)
- Rear side windows and rear window tinted
- Voice control
- "Comfort" telephone interface with inductive charging function

Brief expert findings

Documents submitted	At the time of the inspection, the vehicle registration certificate Part 2 (title) was available, but the vehicle registration certificate Part 1 (document) was not. (Copy)
VIN comparison	The vehicle identification number (VIN) was read from the vehicle and its conformity with the submitted documents was confirmed by the undersigned during the inspection.
Inspection	The inspection conditions were sufficient for the assessment of the vehicle. No lifting equipment or pit was available for inspecting the vehicle. Therefore, inspection of the vehicle's underside was only possible to a limited extent.
Test drive	No test drive/shunting maneuver was carried out during the inspection of the vehicle.
Engine function test	An engine test run was performed.

Value reducing factors

No.	Component group	Description
1	Equipment	Tirefit filler - Expired - Replace
2	Mudguard - left side	Mudguard - left side - dent(s) - Smooth repair work
3	Indicator - front	Mirror - right side - Scratch(es) - Replace
4	Wing mirror - left side	Cap - Scratch(es) - Paint
5	Wing mirror - right side	Cap - Scratch(es) - Paint
6	Body	A-pillar - left side - Stone chips - Smart repair
7	Front bumper	Front bumper - Scratch(es) - Smart repair
8	Bonnet	Bonnet - Dent / paintcoat damage - Repair and paint
9	Door - rear right side	Door - Scratch(es) - Paint



Wear and tear

No.	Component group	Description
1	Door - front left side	Door - dent(s) - No deduction
2	Mudguard - right side	Mudguard - right side - dent(s) - No deduction
3	Boot lid / rear door	Boot lid - Scratch(es) - No deduction
4	Mudguard - right side	Mudguard - right side - Stone chips - No deduction
5	Roof	Roof - Stone chips - No deduction

The vehicle shows signs of wear and tear commensurate with its age and use.

Previous damages

No.	Previous damage	Extent of damage (Net)
1	Side - left, Provided by user / customer, from 27 Oct 2025	4.547,54 €

Repainting

No.	Repainting
1	Mudguard - left side, Professionally carried out, Invoice of repair done Non-existent
2	Door - rear left side, Professionally carried out, Invoice of repair done Non-existent

Paint coat thickness measurement

Mudguard - left side	163 µm	Door - rear left side	170 µm
----------------------	--------	-----------------------	--------

Order/Scope of Order

An order was placed to prepare a sales report for the described vehicle. This report includes the following:

- Description of key vehicle information
- Documentation of equipment features
(Delivery by third-party service providers)
- Documentation of damage, defects, missing parts
- Documentation of prior damage, unrepaired prior damage, repainting
- A brief visual or functional inspection of the equipment details, if possible.
(Functional testing of driver assistance systems is not included in the scope of services!)
- a photographic documentation of the vehicle



Basis for the order

This product is based on the guidelines for vehicle returns and valuations published by Alphabet Fleet GmbH. The expert makes the specific findings in each individual case objectively, within the framework of the prescribed standards, based on their own expertise.

The vehicle inspection takes place in a fully assembled, unassembled state.

Damage or defects that can only be detected during disassembly/diagnostic work or through further investigation remain within the realm of prognostic risk. An increased risk exists due to concealed defects caused by fraudulent misrepresentation and which were not identifiable by the expert.

Damage or defects resulting from normal use or wear and tear of the vehicle will be accepted in accordance with the applicable standard.

There was no explicit identification or monetary consideration of the expected features within the product.

Features which, in their nature and extent, slightly exceed normal use but do not constitute unacceptable damage, will be documented and indicated as signs of wear, if applicable.

Damage or defects that, according to the applicable standard, can no longer be attributed to normal use or wear and tear are listed under "Value Reducing Factors" in the product description.

Depending on the product specification, a monetary ID can be provided. If this takes place, the costs can be 100% d or pro rata depending on the vehicle's age and mileage.

Previous damages

According to available information previous damages were repaired at the vehicle. Traces of repairs, which allow conclusions about the area of repair, were not recognizable during the inspection.

Comments

- Der montierte Radsatz ist kein Teil der Ausstattungsliste.



Figure 1: Diagonal front (left)



Figure 2: Diagonal front (right)



Figure 3: Diagonal rear (left)



Figure 4: Diagonal rear (right)



Figure 5: Interior - front



Figure 6: Interior - rear



Figure 7: Instrument cluster



Figure 8: Instrument panel



Figure 9: Interior 360° view



Figure 10: Cargo area



Figure 11: VIN



Figure 12: Mounted tyres



Figure 13: Documents



Figure 14: Additional tyres



Figure 15: Additional tyres



Figure 16: Navigation



Figure 17: Misc.



Figure 18: Misc.



Figure 19: Misc.

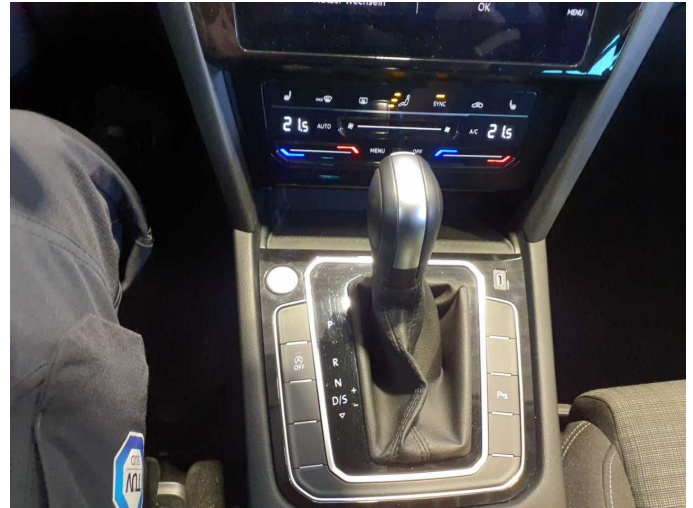


Figure 20: Misc.



Figure 21: Misc.



Figure 22: Misc.



Figure 23: Misc.

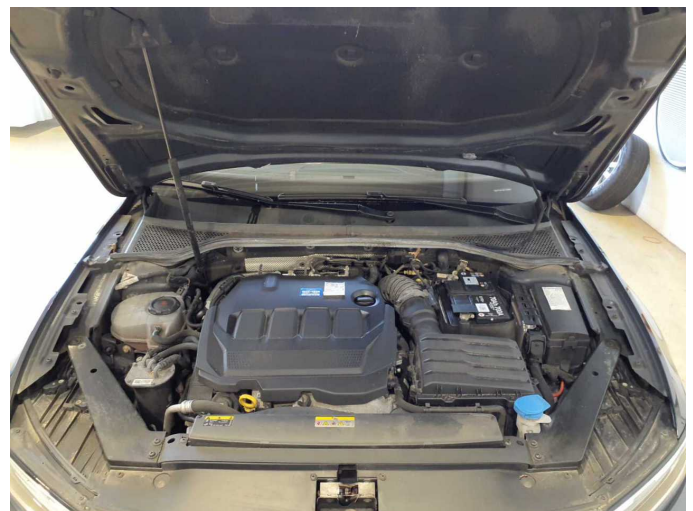


Figure 24: Misc.



Figure 25: Misc.



Figure 26: Misc.



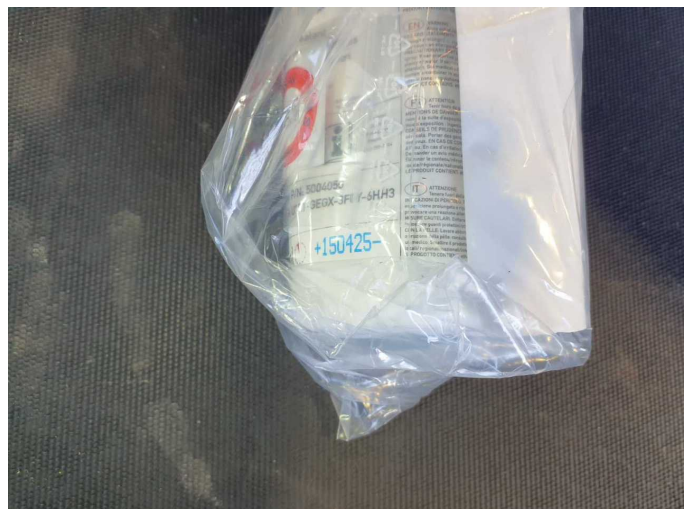
Figure 27: Misc.



Figure 28: Misc.



Figure 29: Misc.



Damage 1: Equipment: Tirefit filler - Expired - Replace



Damage 2: Mudguard - left side: Mudguard - left side - dent(s) - Smooth repair work



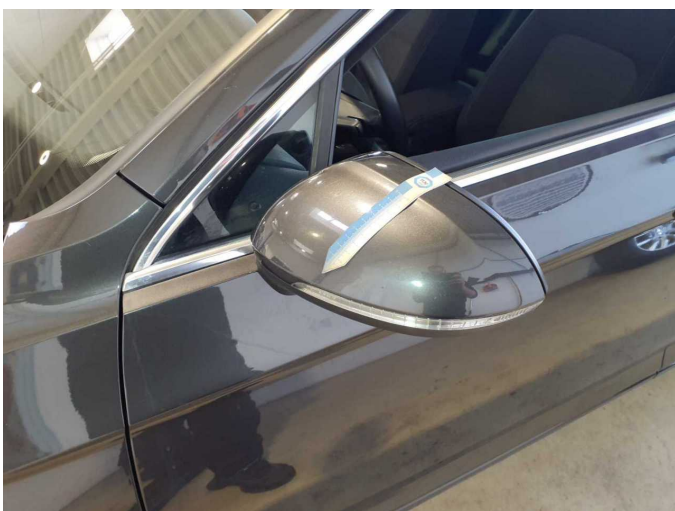
Damage 2: Mudguard - left side: Mudguard - left side - dent(s) - Smooth repair work



Damage 3: Indicator - front: Mirror - right side - Scratch(es) - Replace



Damage 3: Indicator - front: Mirror - right side - Scratch(es) - Replace



Damage 4: Wing mirror - left side: Cap - Scratch(es) - Paint



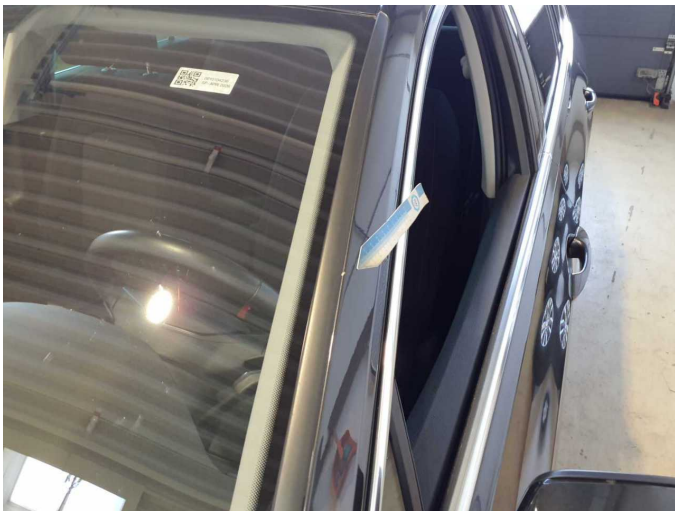
Damage 4: Wing mirror - left side: Cap - Scratch(es) - Paint



Damage 5: Wing mirror - right side: Cap - Scratch(es) - Paint



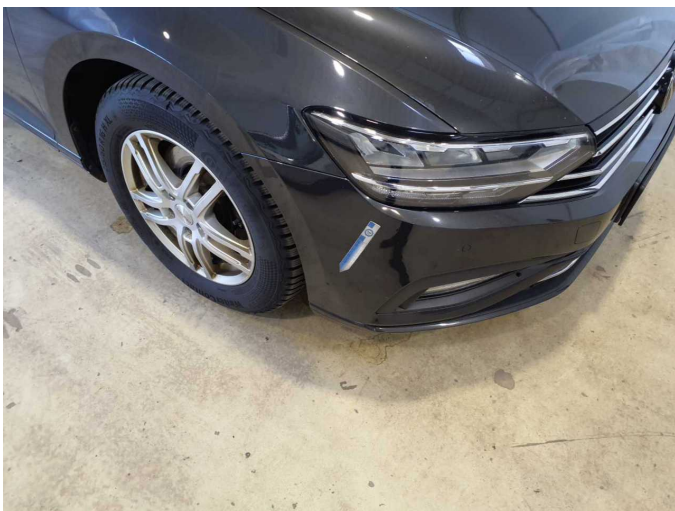
Damage 5: Wing mirror - right side: Cap - Scratch(es) - Paint



Damage 6: Body: A-pillar - left side - Stone chips - Smart repair



Damage 6: Body: A-pillar - left side - Stone chips - Smart repair



Damage 7: Front bumper: Front bumper - Scratch(es) - Smart repair



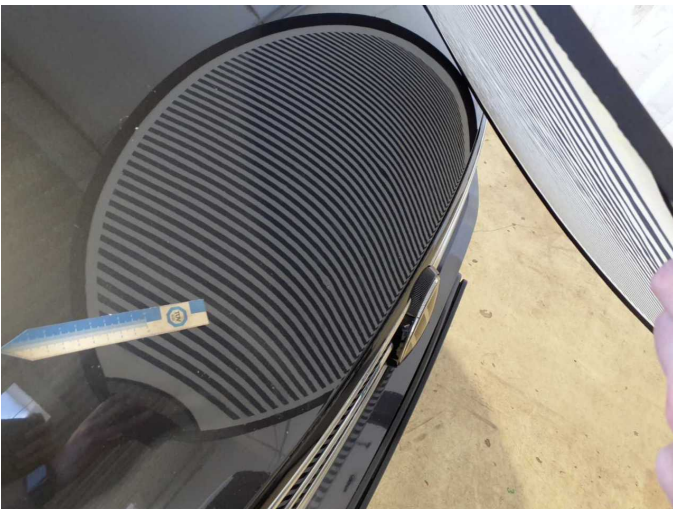
Damage 7: Front bumper: Front bumper - Scratch(es) - Smart repair



Damage 8: Bonnet: Bonnet - Dent / paintcoat damage - Repair and paint



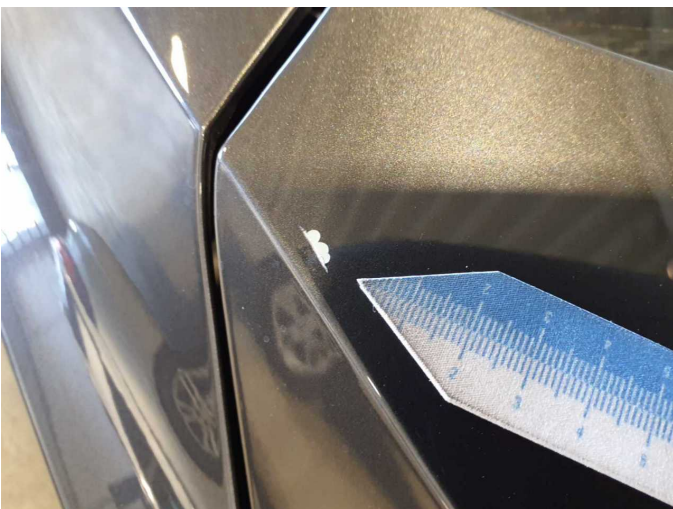
Damage 8: Bonnet: Bonnet - Dent / paintcoat damage - Repair and paint



Damage 8: Bonnet: Bonnet - Dent / paintcoat damage - Repair and paint



Damage 8: Bonnet: Bonnet - Dent / paintcoat damage - Repair and paint



Damage 8: Bonnet: Bonnet - Dent / paintcoat damage - Repair and paint



Damage 9: Door - rear right side: Door - Scratch(es) - Paint



Damage 9: Door - rear right side: Door - Scratch(es) - Paint



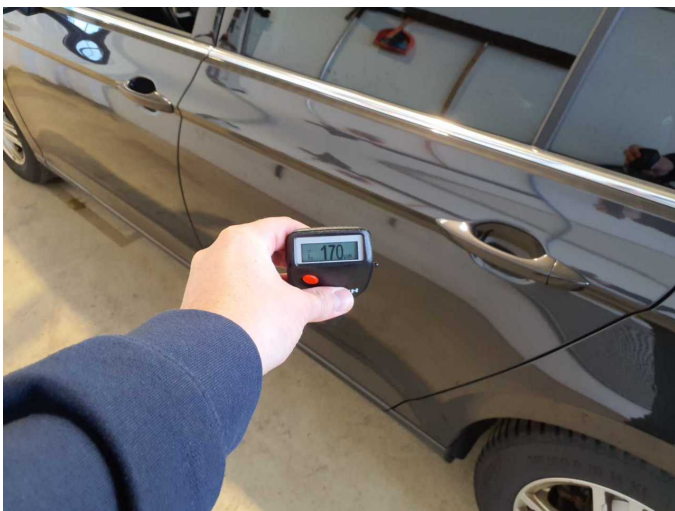
Damage 9: Door - rear right side: Door - Scratch(es) - Paint



Repainting 1: Mudguard - left side



Repainting 1: Mudguard - left side



Repainting 2: Door - rear left side



Repainting 2: Door - rear left side



Wartungshistorie

(gemäß Auftraggeber Informationen)

Fahrgestellnummer: WVVZZZ3CZME123325

Hersteller / Modell: VOLKSWAGEN VW Passat Variant 2.0 TDI SCR DSG Business

Datum	KM-Stand	Beschreibung
25.03.2026	135.275	Batterie ern; Bremse Sonstiges; Bremsklötze hinten; Bremsklötze vorne; Bremsscheiben + Klötze h; Bremsscheiben hinten; Systemtest/ Eigendiagnose
27.01.2026	128.676	Bremsflüssigkeit ern; Getriebeöl ern/prüfen; Motoröl b. Wartung; Regelwartungsdienst
09.05.2025	106.823	Bremsscheiben + Klötze v
18.10.2024	93.812	Bremsscheiben + Klötze h; Kraftstofffilter ern; Luftfiltereinsatz ern; Motoröl b. Wartung; Regelwartungsdienst
27.10.2023	61.907	Bremsscheiben + Klötze v; Motoröl b. Wartung; Regelwartungsdienst
01.08.2023	54.936	Bremsflüssigkeit ern
18.01.2023	43.438	Bremsscheiben + Klötze h
08.09.2022	32.327	Motoröl b. Wartung; Regelwartungsdienst