

Expertise

Protocol number: 46278349
Order No. / Reference: 26511452
Inspection date: 2 Jul 2026

Manufacturer: Peugeot

Model: 5008 BlueHDi 130 EAT8 GT

VIN: VF3MCRYHZUNS173315



Vehicle details

Manufacturer / Type / Model / Equipment

Peugeot 5008 BlueHDi 130 EAT8 GT

Vehicle Identification number VF3MCRYHZUNS173315

Mileage (Read) 56,892 km

First registration 31 May 2023

Number of holders 1

Power / Engine displacement 96 kw / 1,499 ccm

Fuel type / Cylinder Diesel / 4

Gearbox / Number of gears Automatic / 8

Type of drive Front drive

Type of vehicle Station wagon

Colour / colour code Perla Nera Schwarz
Metallic

Doors / Seats 5 / 7

Upholstery type Cloth / leather
combination

Colour of upholstery Grey-Black

TÜV SÜD Auto Partner GmbH
Wiesenring 2
04159 Leipzig

Inspection location
ARS Altmann AG Automobillogistik
Römerstraße 3
64560 Riedstadt



Equipment



Standard equipment

- ABS (Anti-lock Braking System)
- Airbag for driver and front passenger (passenger airbag can be deactivated)
- Active Blind Spot Assist
- Electrically folding exterior mirrors with LED approach lighting
- Electrically adjustable and heated exterior mirrors with integrated LED turn signals
- Trim panel between the taillights in high-gloss black
- third brake light
- Chrome trim strips on the lower part of the doors
- Chrome trim strips above the side windows
- Chrome trim strips below the side windows
- Black headliner
- Aluminum roof rails
- Ceiling light - LED at the front, in row 2 and in row 3, 2 LED reading lights at the front, in row 2 and in row 3
- Decorative trim on the dashboard and door panels in satin chrome
- EBV (Electronic Brakeforce Distribution)
- Front parking aid, acoustic and visual
- Driving mode switch (Sport - Normal - Eco) (Sport mode to activate the following functions: - Display of driving dynamics parameters on the instrument cluster - More responsive accelerator pedal response - More responsive power steering - Increased engine noise)
- electric parking brake
- Front collision warning
- Floor mats (front and rear)
- Cruise control system with speed limiter
- Cup holder in the center console
- Seat belts: 3-point seat belts (Front seats: - Height-adjustable three-point seat belts with belt locks - Pyrotechnic belt tensioners and electronically controlled belt force limiters - Warning light and warning signal when the seat belt is not fastened or is released for driver and front passenger Rear seats: - 3 three-point seat belts - 3 three-point Isofix child seat anchors in the 2nd row - Belt force limiters on the side seats - Warning light and warning signal when the seat belt is released)
- Front headrests (2) (Safety optimized)
- Rear headrests (3) (height adjustable and lowerable)
- Blue LED ambient lighting on the door panel
- LED daytime running lights and LED turn signals at the front
- light sensor
- Air vents with satin chrome trim
- Front center armrest, two-piece, with storage compartment, illuminated and climate-controlled
- rear fog lights
- Emergency brake assist (with automatic activation of the hazard warning lights)
- Package: Children's package (folding tables on the front seatbacks - sunshades in row 2)
- Particulate filter: FAP diesel particulate filter
- Active Safety Brake Plus (for nighttime use and cyclists)
- Airbag: Front and rear side airbags
- Airbag: Curtain airbags front and rear
- Adaptive Cruise Control (ACC) with Stop & Go function including lane positioning assistant (and Active Safety Brake Plus (for night driving and cyclists))
- Exterior mirrors in Perla Nera Black
- Hill start assist
- On-board computer (outside temperature and maintenance display - average and current fuel consumption - remaining range - distance traveled - average speed)
- Black Diamond roof (roof in Perla Nera black) (exterior mirror caps in Perla Nera black - rear spoiler in glossy black)
- Alcantara "Greal" decorative inserts for door panels and dashboard
- Digital instrument cluster with high-resolution 12.3" screen, adjustable and customizable
- Rear parking aid, acoustic and visual
- ESP (Electronic Stability Program) with ASR (Anti-Slip Regulation)
- Misfueling protection
- Electric front and rear windows (with comfort operation and anti-pinch protection)
- High beam assist
- Follow-me-home function (automatic)
- Full LED headlights with automatic headlight range control (with static cornering lights and (Foggy Mode) function)
- Transmission: 8-speed automatic transmission EAT8
- GT logo on the fenders and the trunk lid
- Illuminated glove compartment
- Heated rear window
- rear window wiper
- Interior mirror automatically dimming
- Frameless interior mirror
- Map pockets on the front seatbacks
- Keyless system (keyless access and start system)
- Child safety locks on the rear doors
- Automatic climate control (2-zone), with activated carbon filter (separately adjustable for driver and front passenger)
- Chrome-plated loading sill protector
- White LED lighting in the front footwell
- Steering wheel: Multifunction leather steering wheel
- Steering wheel: small multifunction steering wheel, flattened at the top and bottom
- Makeup mirror (illuminated for driver and front passenger)
- Fatigue warning system with fatigue detection
- Navigation system: 3D navigation system NAC (Active Pack) (3D navigation including 3D display of buildings and monuments - voice recognition for navigation, telephone and media - operation via touchscreen with 10" HD color screen - map transfer to the digital instrument cluster - multifunctional touchscreen with 10" color screen - capacitive screen - piano key toggle switches)



- Aluminum pedals and stainless steel door sills
- Upholstery: Fabric/faux leather "Belomka" in black with decorative stitching in copper
- Wheel arch liners in black
- Radio: RCC audio system (Bi-tuner - 6 speakers - MP3-compatible - Bluetooth hands-free system with audio streaming via Bluetooth - USB port - operation via steering wheel and touchscreen)
- Radio accessories: Digital radio reception DAB+
- Rain sensor
- Tire pressure monitoring system
- Wheels: Tire repair kit (compressor + tire sealant spray)
- Reversing camera with 180° surround view
- Keyless start system
- Electric power steering
- Seats: 2 additional seats for the 3rd row (removable and fully retractable)
- Seats: Passenger seat height adjustable
- Seats: Driver's seat height adjustable
- Lane keeping assist with steering intervention
- Power outlet: Dual USB port (Type A) in row 2
- Traffic sign recognition (with display of the speed recommendation in the instrument cluster)
- Central locking system, activatable from inside via remote control (doors lock automatically when driving off)
- Peugeot Connect Box (with the free telematics services Peugeot Connect SOS and Peugeot Connect Assistance - GPS module - Integrated European SIM card - Speaker and microphone - Emergency battery)
- Radio: Mirror Screen (Transfer of multimedia content and apps from a compatible smartphone to the vehicle's touchscreen, allowing direct control of compatible functions and apps - CarPlay (for compatible Apple iPhone models) - Android Auto (for compatible smartphone models with Android operating system))
- Wheels: 18" "Detroit" alloy wheels, two-tone with black (with 225/55 R 18 tires)
- paddle shifters on the steering wheel
- Side windows in the second row and rear window are more heavily tinted.
- Seats: 3 separate individual seats in row 2 (foldable, with longitudinal adjustment and backrest tilt adjustment)
- Seats: Passenger seat foldable
- Seats: Manual lumbar support for driver's seat (2-way)
- 12 Volt power outlet (3) (in the trunk, rows 1 and 2)
- Stop&Start system (automatic)
- Tie-down points in the trunk (4 pieces)
- Immobiliser

Extra equipment

- Alarm system (including all-round, interior, towing protection and safe locking)
- Pre-installation for luggage compartment partition net
- Paint finish: Special metallic paint
- Seats: Heated front seats (adjustable in 3 stages)

Brief expert findings

Documents submitted	At the time of the inspection, the vehicle registration certificate Part 2 (title) was available, but the vehicle registration certificate Part 1 (document) was not. (Copy)
VIN comparison	The vehicle identification number (VIN) was read from the vehicle and its conformity with the submitted documents was confirmed by the undersigned during the inspection.
Inspection	The inspection conditions were sufficient for the assessment of the vehicle. No lifting equipment or pit was available for inspecting the vehicle. Therefore, inspection of the vehicle's underside was only possible to a limited extent.
Test drive	No test drive/shunting maneuver was carried out during the inspection of the vehicle.
Engine function test	An engine test run was performed.

Value reducing factors

No.	Component group	Description
1	Sill - left side	Sill - Scratch(es) - Smart repair
2	Side panel - rear left side	Sill - Scratch(es) - Smart repair
3	Sill - right side	Sill - Scratch(es) - Smart repair
4	Side panel - rear right side	Sill - Scratch(es) - Smart repair
5	Door - rear right side	Door - Dent / paintcoat damage - Smart repair



Missing parts

Description

Interior - Separation net

Order/Scope of Order

An order was placed to prepare a sales report for the described vehicle. This report includes the following:

- Description of key vehicle information
- Documentation of equipment features
(Delivery by third-party service providers)
- Documentation of damage, defects, missing parts
- Documentation of prior damage, unrepaired prior damage, repainting
- A brief visual or functional inspection of the equipment details, if possible.
(Functional testing of driver assistance systems is not included in the scope of services!)
- a photographic documentation of the vehicle

Basis for the order

This product is based on the guidelines for vehicle returns and valuations published by Alphabet Fleet GmbH. The expert makes the specific findings in each individual case objectively, within the framework of the prescribed standards, based on their own expertise.

The vehicle inspection takes place in a fully assembled, unassembled state.

Damage or defects that can only be detected during disassembly/diagnostic work or through further investigation remain within the realm of prognostic risk. An increased risk exists due to concealed defects caused by fraudulent misrepresentation and which were not identifiable by the expert.

Damage or defects resulting from normal use or wear and tear of the vehicle will be accepted in accordance with the applicable standard.

There was no explicit identification or monetary consideration of the expected features within the product.

Features which, in their nature and extent, slightly exceed normal use but do not constitute unacceptable damage, will be documented and indicated as signs of wear, if applicable.

Damage or defects that, according to the applicable standard, can no longer be attributed to normal use or wear and tear are listed under "Value Reducing Factors" in the product description.

Depending on the product specification, a monetary ID can be provided. If this takes place, the costs can be 100% d or pro rata depending on the vehicle's age and mileage.

Previous damages

No apparent prior damage that had been repaired could be found on the vehicle.

Comments

- Die Unterbodenbesichtigung war nur ebenerdig & eingeschränkt möglich. Mehrkosten möglich.



Figure 1: Diagonal front (left)



Figure 2: Diagonal front (right)



Figure 3: Diagonal rear (left)



Figure 4: Diagonal rear (right)



Figure 5: Interior - front

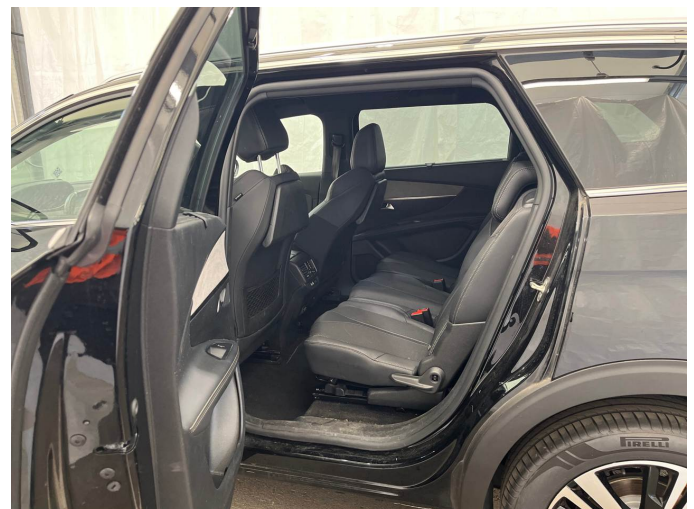


Figure 6: Interior - rear



Figure 7: Instrument cluster



Figure 8: Instrument panel



Figure 9: Interior 360° view



Figure 10: Cargo area

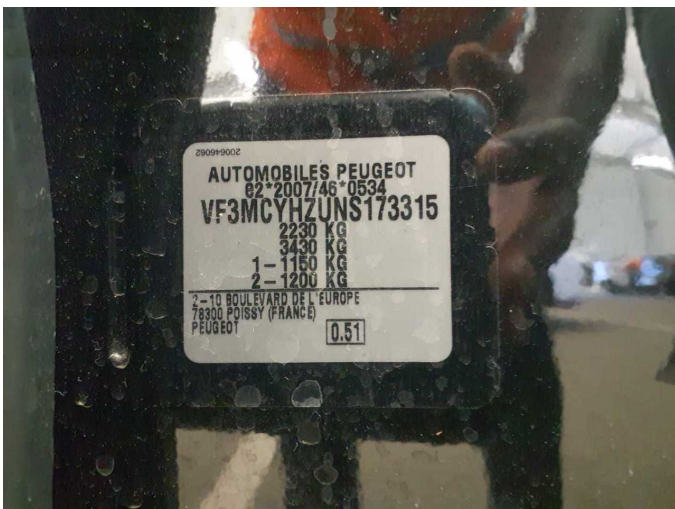


Figure 11: VIN



Figure 12: Mounted tyres



Figure 13: Documents

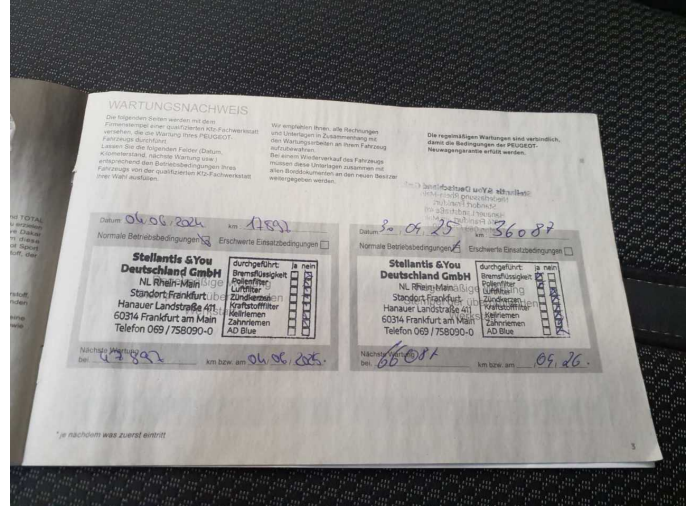


Figure 14: Documents

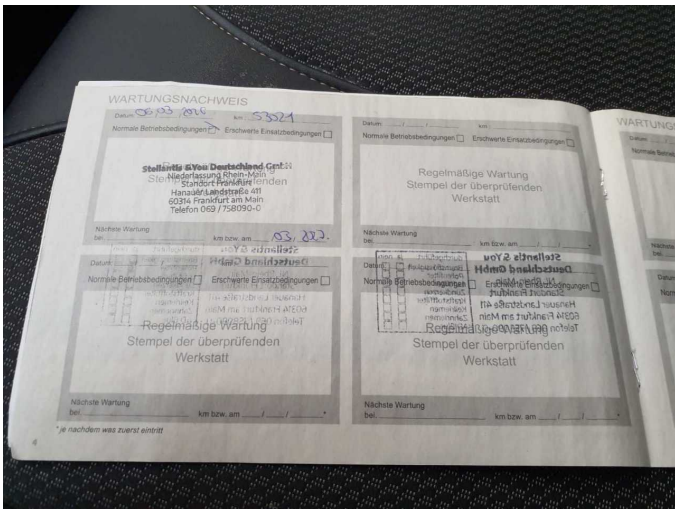


Figure 15: Documents



Figure 16: Documents



Figure 17: Additional tyres



Figure 18: Navigation



Figure 19: Misc.



Figure 20: Misc.



Figure 21: Misc.



Figure 22: Misc.

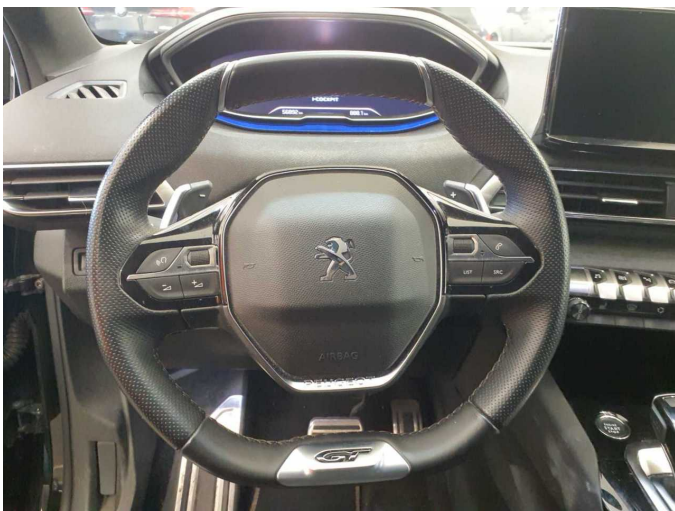


Figure 23: Misc.

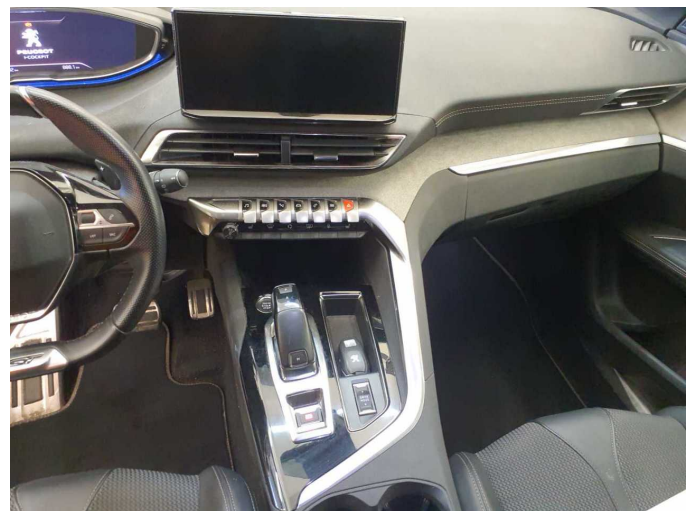


Figure 24: Misc.

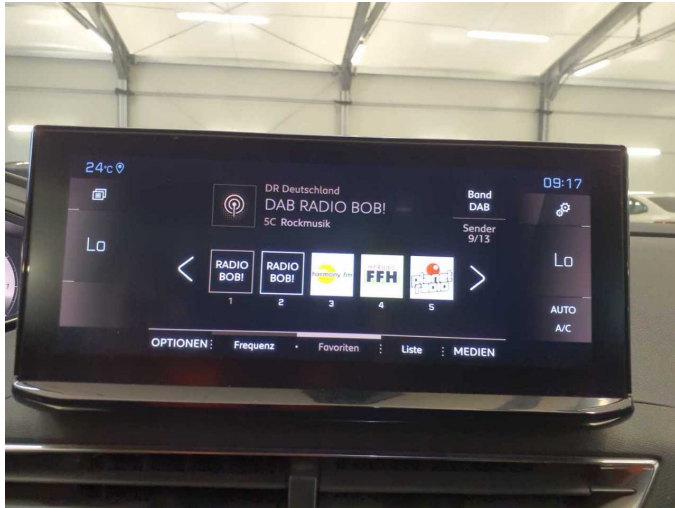


Figure 25: Misc.



Figure 26: Misc.



Figure 27: Misc.



Figure 28: Misc.

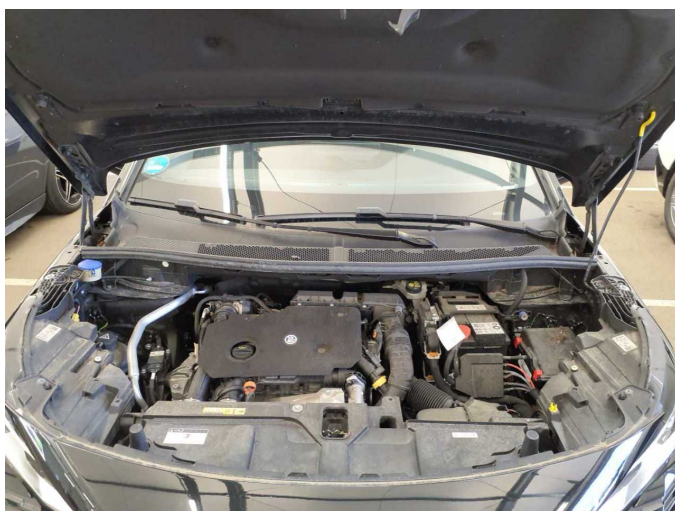


Figure 29: Misc.



Figure 30: Misc.



Figure 31: Misc.

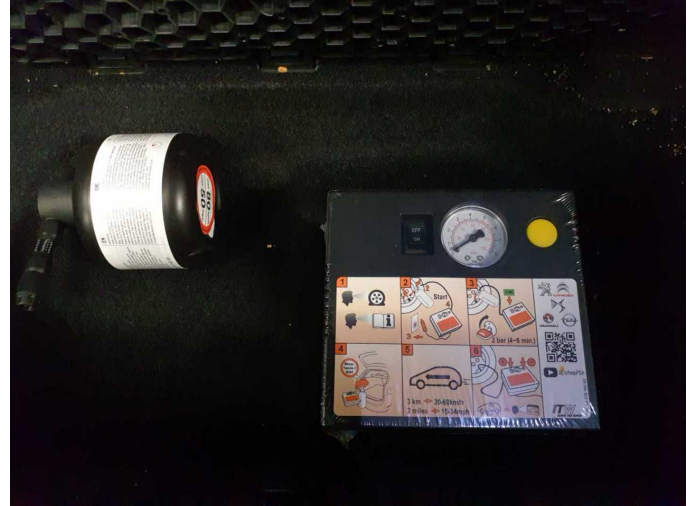


Figure 32: Misc.



Figure 33: Misc.



Figure 34: Misc.



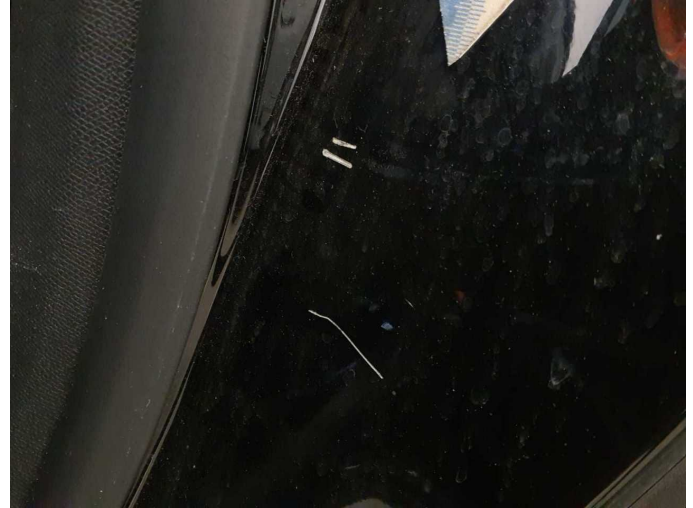
Damage 1: Sill - left side: Sill - Scratch(es) - Smart repair



Damage 1: Sill - left side: Sill - Scratch(es) - Smart repair



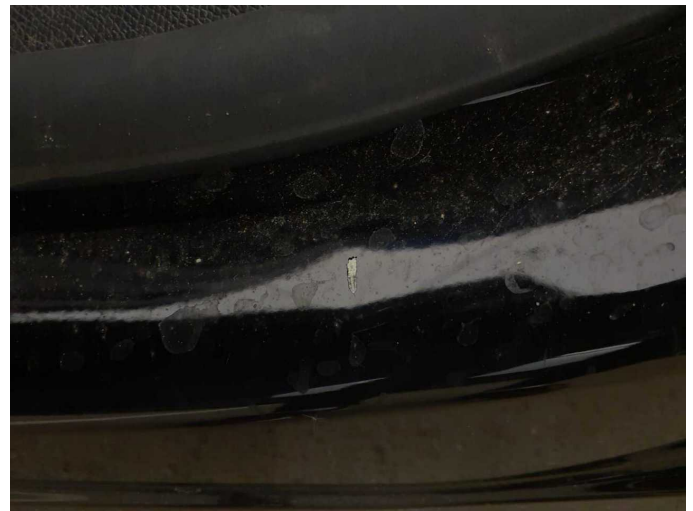
Damage 2: Side panel - rear left side: Sill - Scratch(es) - Smart repair



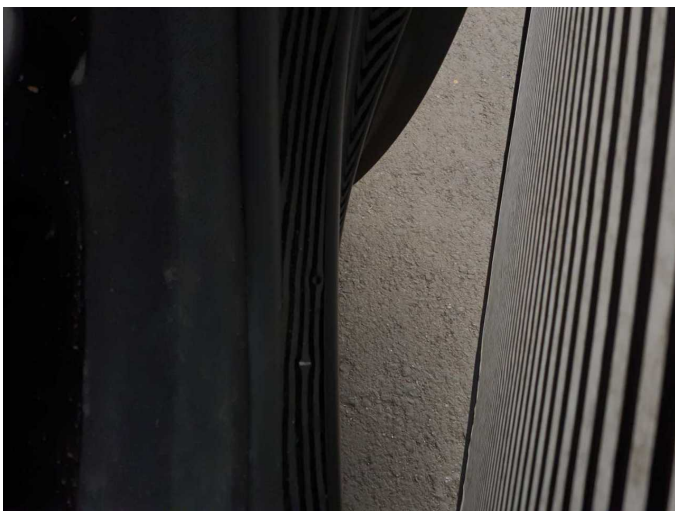
Damage 2: Side panel - rear left side: Sill - Scratch(es) - Smart repair



Damage 2: Side panel - rear left side: Sill - Scratch(es) - Smart repair



Damage 2: Side panel - rear left side: Sill - Scratch(es) - Smart repair



Damage 2: Side panel - rear left side: Sill - Scratch(es) - Smart repair



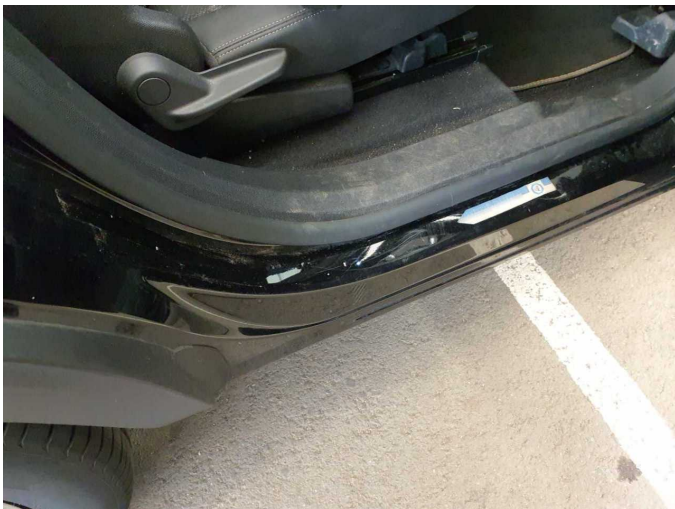
Damage 3: Sill - right side: Sill - Scratch(es) - Smart repair



Damage 3: Sill - right side: Sill - Scratch(es) - Smart repair



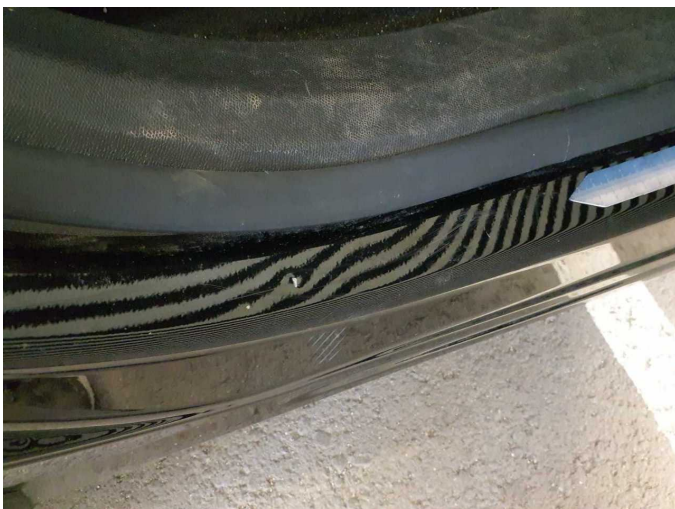
Damage 3: Sill - right side: Sill - Scratch(es) - Smart repair



Damage 4: Side panel - rear right side: Sill - Scratch(es) - Smart repair



Damage 4: Side panel - rear right side: Sill - Scratch(es) - Smart repair



Damage 4: Side panel - rear right side: Sill - Scratch(es) - Smart repair



Damage 4: Side panel - rear right side: Sill - Scratch(es) - Smart repair



Damage 5: Door - rear right side: Door - Dent / paintcoat damage - Smart repair



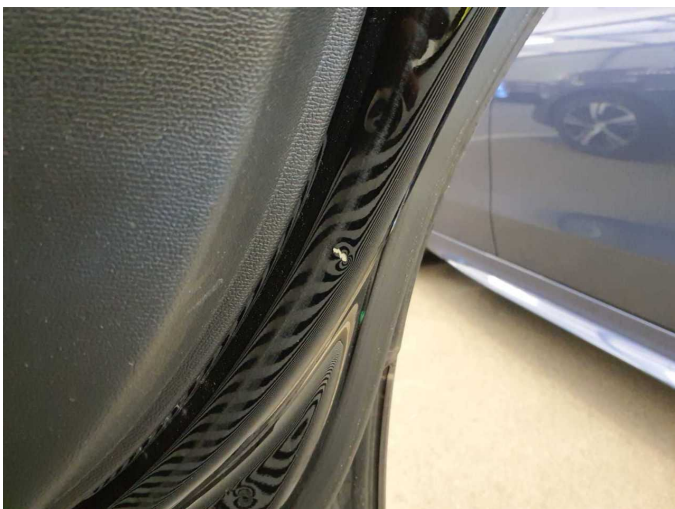
Damage 5: Door - rear right side: Door - Dent / paintcoat damage - Smart repair



Damage 5: Door - rear right side: Door - Dent / paintcoat damage - Smart repair



Damage 5: Door - rear right side: Door - Dent / paintcoat damage - Smart repair



Damage 5: Door - rear right side: Door - Dent / paintcoat damage - Smart repair



Damage 5: Door - rear right side: Door - Dent / paintcoat damage - Smart repair



Wartungshistorie

(gemäß Auftraggeber Informationen)

Fahrgestellnummer: VF3MCYHZUNS173315

Hersteller / Modell: PEUGEOT PEUGEOT 5008 BlueHDi 130 EAT8 GT

Datum	KM-Stand	Beschreibung
16.03.2026	53.190	Bremse Sonstiges; Bremsklötze hinten; Bremsklötze vorne; Bremsscheiben + Klötze h; Bremsscheiben + Klötze v; Bremsscheiben hinten; Bremsscheiben vorne
06.03.2026	53.021	Motoröl b. Wartung; Ölfilter ern; Regelwartungsdienst; Wartung Sonstiges
02.05.2025	36.087	Bremsflüssigkeit; Bremsflüssigkeit ern; Motoröl b. Wartung; Ölfilter ern; Regelwartungsdienst; Wartung Sonstiges
06.06.2024	17.897	Motoröl b. Wartung; Ölfilter ern; Regelwartungsdienst; Wartung Sonstiges