

Expertise

Protocol number: 46044692
Order No. / Reference: 26522295
Inspection date: 17 Jun 2026

Manufacturer: Ford

Model: Focus Turnier 1.5 EcoBlue Start-Stopp-System Aut. TITANIUM

VIN: WF0PXXGCHPPD66254



Vehicle details

Manufacturer / Type / Model / Equipment

Ford Focus Turnier 1.5 EcoBlue Start-Stopp-System Aut. TITANIUM

Vehicle Identification number WF0PXXGCHPPD66254

Mileage (Read) 105,004 km

First registration 31 Mar 2023

Number of holders 1

Next periodical technical inspection 03/2026

(Report not on hand)

Power / Engine displacement 85 kw / 1,499 ccm

Fuel type / Cylinder Diesel / 4

Gearbox / Number of gears Automatic / 8

Type of drive Front drive

Type of vehicle Station wagon

Colour / colour code Frozen White

Doors / Seats 5 / 5

Upholstery type Cloth

Colour of upholstery Anthracite-Black

Re-import no

readiness to drive Roadworthy



Vehicle details

Maintenance booklet / proof	Available / incomplete	Next maintenance in	39 %
Key is / should be	2 / 2	FZG documents	ZB#2 (B) was available (copy), ZB#1 (S) was not available.
		Letter No.	GT892718
Previous damage / Accident	None detectable	Repainting	None detectable
Inspection conditions	sufficient	Lifting equipment / pit	yes
Test drive	Not performed	Engine function test	Performed
readiness to drive	Roadworthy		
Manufacturer key number/ type code number	8566 / BYE 00002		
Emission standard	EURO6;WLTP;AP;PI/CI; M, N1 I	fine dust sticker	
Permitted total weight	2,035 kg	Empty weight	

Tyres

Mounted tyres

#	Tyre size	Type of tyre	Manufacturer	Tread depth
1)	205/60 R16 92V	Summer tyres on Steel	Pirelli	5mm / 5mm
2)	205/60 R16 92V	Summer tyres on Steel	Pirelli	5mm / 5mm

Additional tyres

#	Tyre size	Type of tyre	Manufacturer	Tread depth
1)	205/60 R16 96H	Winter tyres on Steel	Dunlop	4mm / 4mm
2)	205/60 R16 96H	Winter tyres on Steel	Dunlop	4mm / 4mm

Replacement

Typ	Tyre size	Type of tyre	Manufacturer	Tread depth
N	125/70 R16 96M	Summer tyres on Steel	Hankook	4 mm

Legend: Tread depth information for the left tire is listed first, for the right tire it is listed second on the axle in the direction of travel.



Equipment

Standard equipment

- Airbag: Passenger airbag deactivation
- Exterior mirrors painted in body color, electrically adjustable, heated and foldable
- Tires: 6.5 J x 16 design wheels (4) with 205/60 R16 tires
- Hill start assist
- Roof rails, aluminum
- Diesel particulate filter (DPF)
- Electronic Shifter
- Driver information system with on-board computer, color (10.7 cm screen diagonal)
- Electric parking brake with auto-hold function
- FordPass Connect including live traffic information
- Luggage compartment lighting
- Cruise control
- Illuminated glove compartment
- rear window wiper
- Interior mirror, automatically dimming
- Isofix bracket
- Headrests: 2 front and 3 rear, height adjustable
- LED taillights
- Steering wheel: 3-spoke design
- Make-up mirrors in driver and passenger sun visors
- MyKey key system (individually programmable second key)
- Emergency call assistant
- Front and rear parking pilot system
- Post-Collision Assist
- Tire repair kit
- Windscreen wipers with rain sensor (sensitivity adjustable)
- Headlight assistant with day/night sensor
- Electromechanical speed-dependent power steering
- Seats: Driver's seat height adjustable
- Seats: Front sports seats with enhanced lateral support
- 12-volt power outlet in the luggage compartment
- Variable radiator air intake
- Warning system for unfastened seat belts for the 1st and 2nd rows of seats

Extra equipment

- eCall
- Package: Easy Parking (Active Parking Assist with parking and exiting function (in conjunction with 8-speed automatic transmission including semi-automated vehicle guidance) - Door edge protection - Rearview camera with "Split View" technology)
- Paint finish: Frozen White
- Safety partition net for luggage compartment
- Seat: Driver/passenger seat heating

- Anti-lock braking system (ABS) with electronic brake force distribution (EBD)
- Attachment points behind the second row of seats for mounting the safety partition net
- Fabric headliner
- Roof spoiler painted in car color
- Tachometer
- Electronic Safety and Stability Program (ESP)
- Lane keeping assist including lane keeping assist
- Electric windows front and rear
- Ford Power Start function
- Luggage compartment cover
- Speed limiter
- Transmission: 8-speed automatic transmission
- Back window, heater
- Interior lighting with LED technology
- Intelligent security system
- Air conditioning with automatic temperature control
- Paint finish: Solid
- LED headlights
- Adjustable steering column
- Center console "Premium" front
- Navigation: Ford SYNC 4 including Ford navigation system with AppLink, 13.2" touchscreen and DAB/DAB+
- Upholstery: Cloth
- Pre-Collision Assist
- Tire Pressure Monitoring System (TPMS)
- Headlight low beam
- Selective driving mode switch
- Seats: Passenger seat height-adjustable, manually
- Seats: Rear seat backrest
- Start-stop system
- Carpet floor mats in the front
- Lashing eyes in the luggage compartment
- Electronic immobilizer
- Central locking with remote control and remote luggage compartment release

- Seats: Ford ergonomic seat (driver and front passenger seat, 18-way adjustable: - position, height and tilt of the backrest and seat cushion manually adjustable (in conjunction with EcoBoost Hybrid - front passenger seat, 2-way adjustable) - thigh support, manually extendable - lumbar support, 4-way electrically adjustable)
- Side windows from the 2nd row of seats and rear window, dark tinted.
- Wheels: Emergency spare wheel (permitted for use up to max. 80 km/h - steel wheel 3.5 J x 16 with 125/70 R16 tire)



Brief expert findings

Documents submitted	At the time of the inspection, the vehicle registration certificate Part 2 (title) was available, but the vehicle registration certificate Part 1 (document) was not. (Copy)
VIN comparison	The vehicle identification number (VIN) was read from the vehicle and its conformity with the submitted documents was confirmed by the undersigned during the inspection.
Inspection	The inspection conditions were sufficient for the assessment of the vehicle. Lifting equipment and/or a pit were available for examining the vehicle.
Test drive	No test drive/shunting maneuver was carried out during the inspection of the vehicle.
Engine function test	An engine test run was performed.
readiness to drive	The vehicle was roadworthy at the time of inspection.

Value reducing factors

No.	Component group	Description
1	Misc.	Inspection / maintenance - No evidence - No deduction
2	Trim / covers	Floor mats - Broken / torn - Replace
3	Engine	Engine cover (Dämmung) - Damage caused by marten / rodent - Replace
4	Bonnet	Bonnet - dent(s) - Smooth repair work
5	Door - front left side	Door - dent(s) - Smooth repair work
6	Door - rear left side	Door - dent(s) - Smooth repair work
7	Sill - left side	Trim (Materialabtrag) - Scratched - Replace
8	Front bumper	Front bumper - Scratch(es) - Smart repair
9	Misc.	Main inspection - Due - Perform
10	Body	Body - Glued / labelled - De-glue / neutralise
11	Interior	Interior - Soiled - Clean
12	Rear bumper	Rear bumper - Deformed - Repair and paint
13	Trim / covers	Floor covering - front left side - Broken / torn - Replace

Wear and tear

No.	Component group	Description
1	Misc.	Main inspection - No evidence - No deduction
2	Body	Body (Flugrost) - Paint defect - No deduction
3	Side panel - rear right side	Side panel - dent(s) - No deduction

The vehicle shows signs of wear and tear commensurate with its age and use.

Missing parts

Description

Trim / covers - Floor mats (Hinten beide)
Wheel / tyres - Wheel cover set - complete
Engine - Engine cover



Order/Scope of Order

An order was placed to prepare a sales report for the described vehicle. This report includes the following:

- Description of key vehicle information
- Documentation of equipment features
(Delivery by third-party service providers)
- Documentation of damage, defects, missing parts
- Documentation of prior damage, unrepaired prior damage, repainting
- A brief visual or functional inspection of the equipment details, if possible.
(Functional testing of driver assistance systems is not included in the scope of services!)
- a photographic documentation of the vehicle

Basis for the order

This product is based on the guidelines for vehicle returns and valuations published by Alphabet Fleet GmbH. The expert makes the specific findings in each individual case objectively, within the framework of the prescribed standards, based on their own expertise.

The vehicle inspection takes place in a fully assembled, unassembled state.

Damage or defects that can only be detected during disassembly/diagnostic work or through further investigation remain within the realm of prognostic risk. An increased risk exists due to concealed defects caused by fraudulent misrepresentation and which were not identifiable by the expert.

Damage or defects resulting from normal use or wear and tear of the vehicle will be accepted in accordance with the applicable standard.

There was no explicit identification or monetary consideration of the expected features within the product.

Features which, in their nature and extent, slightly exceed normal use but do not constitute unacceptable damage, will be documented and indicated as signs of wear, if applicable.

Damage or defects that, according to the applicable standard, can no longer be attributed to normal use or wear and tear are listed under "Value Reducing Factors" in the product description.

Depending on the product specification, a monetary ID can be provided. If this takes place, the costs can be 100% or pro rata depending on the vehicle's age and mileage.

Previous damages

No apparent prior damage that had been repaired could be found on the vehicle.

Comments

- Winterradsatz ist kein Bestandteil des Auslieferungsumfangs.



Figure 1: Diagonal front (left)



Figure 2: Diagonal front (right)



Figure 3: Diagonal rear (left)



Figure 4: Diagonal rear (right)



Figure 5: Interior - front



Figure 6: Interior - rear



Figure 7: Instrument cluster



Figure 8: Instrument panel



Figure 9: Interior 360° view



Figure 10: Cargo area



Figure 11: VIN



Figure 12: Mounted tyres



Figure 13: Documents

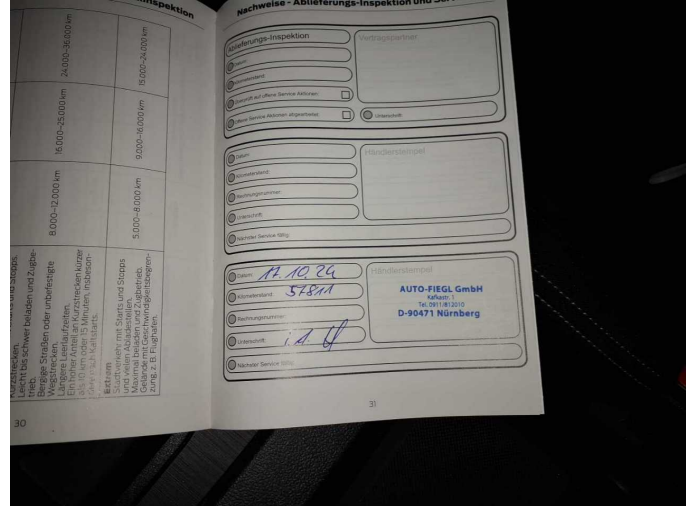


Figure 14: Documents



Figure 15: Additional tyres

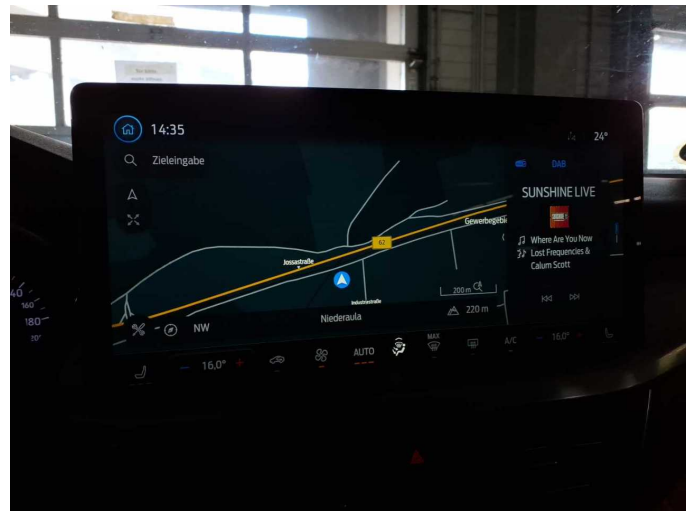


Figure 16: Navigation



Figure 17: Misc.



Figure 18: Misc.



Figure 19: Misc.



Figure 20: Misc.

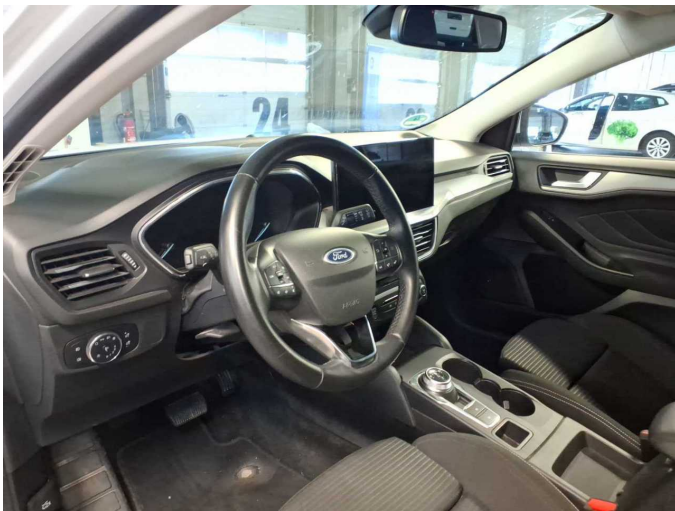


Figure 21: Misc.



Figure 22: Misc.

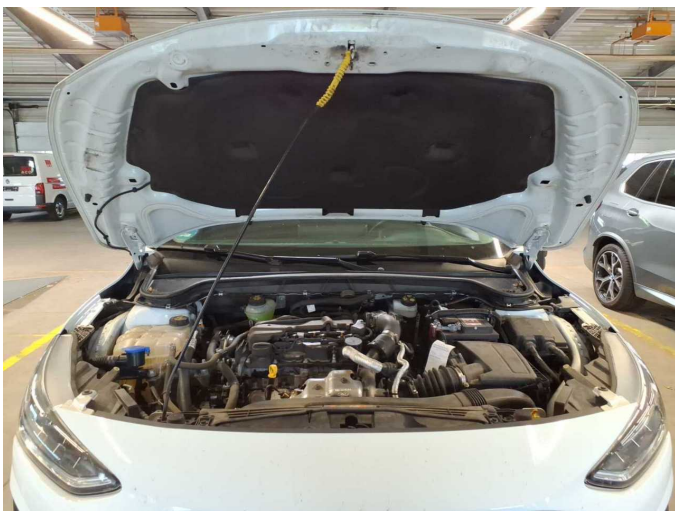


Figure 23: Misc.



Figure 24: Misc.



Figure 25: Misc.



Figure 26: Misc.



Figure 27: Misc.



Damage 2: Trim / covers: Floor mats - Broken / torn - Replace



Damage 3: Engine: Engine cover (Dämmung) - Damage caused by marten / rodent - Replace



Damage 3: Engine: Engine cover (Dämmung) - Damage caused by marten / rodent - Replace



Damage 4: Bonnet: Bonnet - dent(s) - Smooth repair work



Damage 4: Bonnet: Bonnet - dent(s) - Smooth repair work



Damage 5: Door - front left side: Door - dent(s) - Smooth repair work



Damage 5: Door - front left side: Door - dent(s) - Smooth repair work



Damage 6: Door - rear left side: Door - dent(s) - Smooth repair work



Damage 6: Door - rear left side: Door - dent(s) - Smooth repair work



Damage 7: Sill - left side: Trim (Materialabtrag) - Scratched - Replace



Damage 7: Sill - left side: Trim (Materialabtrag) - Scratched - Replace



Damage 7: Sill - left side: Trim (Materialabtrag) - Scratched - Replace



Damage 8: Front bumper: Front bumper - Scratch(es) - Smart repair



Damage 8: Front bumper: Front bumper - Scratch(es) - Smart repair



Damage 10: Body: Body - Glued / labelled - De-glug / neutralise



Damage 10: Body: Body - Glued / labelled - De-glue / neutralise



Damage 10: Body: Body - Glued / labelled - De-glue / neutralise



Damage 10: Body: Body - Glued / labelled - De-glue / neutralise



Damage 11: Interior: Interior - Soiled - Clean



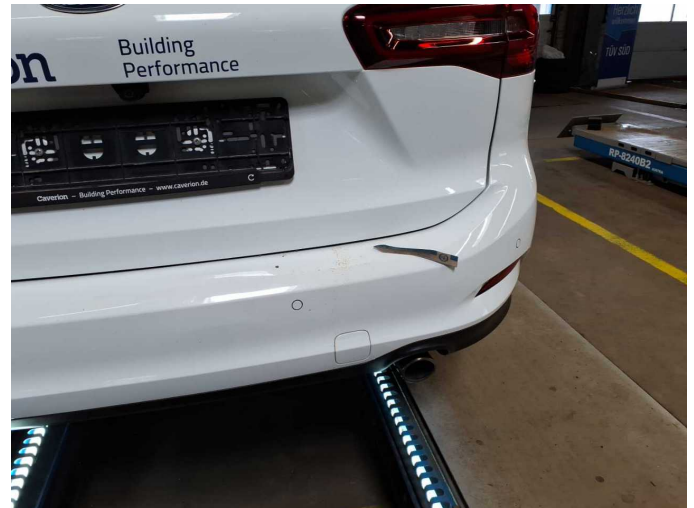
Damage 11: Interior: Interior - Soiled - Clean



Damage 12: Rear bumper: Rear bumper - Deformed - Repair and paint



Damage 12: Rear bumper: Rear bumper - Deformed - Repair and paint



Damage 12: Rear bumper: Rear bumper - Deformed - Repair and paint



Damage 12: Rear bumper: Rear bumper - Deformed - Repair and paint



Damage 13: Trim / covers: Floor covering - front left side - Broken / torn - Replace



Missing part 1: Trim / covers: Floor mats (Hinten beide) - Missing - Replace



Missing part 2: Wheel / tyres: Wheel cover set - complete - Missing - Replace



Missing part 2: Wheel / tyres: Wheel cover set - complete - Missing - Replace



Missing part 3: Engine: Engine cover - Missing - Replace