

## Expertise

Protocol number: 46077339  
Order No. / Reference: 26471920  
Inspection date: 19 Jun 2026

Manufacturer: Opel

Model: Astra 1.5 D Start/Stop Sports Tourer Automatik Edition

VIN: W0VBD8EV7N8041000



### Vehicle details

#### Manufacturer / Type / Model / Equipment

Opel Astra 1.5 D Start/Stop Sports Tourer Automatik Edition

**Vehicle Identification number** W0VBD8EV7N8041000

**Mileage (Read)** 159,245 km

**First registration** 11 Apr 2022

**Number of holders** 1

**Power / Engine displacement** 90 kw / 1,496 ccm

**Fuel type / Cylinder** Diesel / 4

**Gearbox / Number of gears** Automatic / 9

**Type of drive** Front drive

**Type of vehicle** Station wagon

**Colour / colour code** Argonsilber Metallic

**Doors / Seats** 5 / 5

**Upholstery type** Cloth

**Colour of upholstery** Anthracite-Grey



## Vehicle details

<b>Maintenance booklet / proof</b>	digital proof / complete	<b>Next maintenance in</b>	48 %
<b>Last service on / at</b>	01/2026 at 151,297 km		
<b>Key is / should be</b>	2 / 2	<b>FZG documents</b>	ZB#2 (B) was available (copy), ZB#1 (S) was not available.
		<b>Letter No.</b>	GJ649140
<b>Previous damage / Accident</b>	Detectable	<b>Repainting</b>	Detectable
<b>Inspection conditions</b>	sufficient	<b>Lifting equipment / pit</b>	No
<b>Test drive</b>	Not performed	<b>Engine function test</b>	Performed
<b>Manufacturer key number/ type code number</b>	1844 / ALL 00261		
<b>Emission standard</b>	EURO6;WLTP;AP;PI/CI; M, N1 I	<b>fine dust sticker</b>	
<b>Permitted total weight</b>	1,980 kg	<b>Empty weight</b>	

## Tyres

### Mounted tyres

#	Tyre size	Type of tyre	Manufacturer	Tread depth
1)	205/55 R16 91H	Winter tyres on Light alloy	Continental	6mm / 6mm
2)	205/55 R16 91H	Winter tyres on Light alloy	Continental	7mm / 7mm

### Additional tyres

#	Tyre size	Type of tyre	Manufacturer	Tread depth
1)	205/55 R16 91V	Summer tyres on Steel rim with wheel cover	Continental	0mm / 3mm
2)	205/55 R16 91V	Summer tyres on Steel rim with wheel cover	Continental	4mm / 4mm

**Legend: Tread depth information for the left tire is listed first, for the right tire it is listed second on the axle in the direction of travel.**



## Equipment

### Standard equipment

- 2 ignition keys
- Airbag for driver and passenger side
- Airbag: Head airbags, 1st and 2nd row (outer seats)
- Anti-lock braking system (ABS)
- Electrically adjustable and heated exterior mirrors for driver and passenger side
- third brake light
- black roof rails
- Diesel particulate filter (DPF)
- Electronic Stability Program Plus (ESP Plus)
- Speed controller with limiter
- Back window, heater
- Interior lighting, front and rear
- Air conditioning
- trunk light
- Front headrests
- LED daytime running lights
- Steering column, height and reach adjustable
- Sliding center armrest, front
- Pedals: Disengaging safety pedals
- Quickheat rapid heating system
- Radio: Multimedia radio with 7" touchscreen color display
- Tire pressure monitoring system
- Rear seat backrest folds forward in a 60:40 split
- Seat belts: Three-point seat belts in all seats
- Visibility equipment
- Start/Stop System
- Traction Control (TC) Plus
- Immobiliser
- Central locking with remote control and interior switches

### Extra equipment

- Paint finish: Metallic
- Steering wheel: Heated leather steering wheel and seat heating, multi-stage, driver and front passenger (including rear footwell heating)
- Parkpilot, front and rear parking aid (with acoustic warning signal when parking forwards and backwards)

- Storage compartments
- Airbag: Chest-pelvis side airbag for driver and front passenger side
- Automatic activation of the hazard warning lights
- Hill Start Assist
- On-board computer
- Roof design line, above in black
- Decorative trim strips Antelao Sand/Polar Silver
- Tachometer
- Electric windows front and rear
- Transmission: 9-speed automatic transmission
- rear window wiper
- Instruments, black, with high-gloss chrome rings, 3.5" driver information display
- Rear headrests (3)
- Cargo area cover
- Steering wheel: Leather steering wheel
- Lighting equipment
- Parkpilot, rear parking aid
- Upholstery: Cloth
- Radio: Digital radio reception DAB/DAB+/DMB-R
- Tire repair kit
- Wheels: Designer wheels, 7 J x 16 with tires 205/55 R16
- Power steering
- Luggage compartment safety net
- Seats: Comfort seats, front
- 12V power outlet in the center console
- Pre-installation for child seat mounting system "ISOFIX"
- Heat-insulating glazing, green tinted, and windshield

- LED headlights
- Package: Premium Edition Package (Ergonomic active seat, certified by the Campaign for Healthy Backs (AGR), driver - Two-zone automatic climate control - Solar Protect heat-insulating glazing in the rear)



## Brief expert findings

Documents submitted	At the time of the inspection, the vehicle registration certificate Part 2 (title) was available, but the vehicle registration certificate Part 1 (document) was not. (Copy)
VIN comparison	The vehicle identification number (VIN) was read from the vehicle and its conformity with the submitted documents was confirmed by the undersigned during the inspection.
Inspection	The inspection conditions were sufficient for the assessment of the vehicle. No lifting equipment or pit was available for inspecting the vehicle. Therefore, inspection of the vehicle's underside was only possible to a limited extent.
Test drive	No test drive/shunting maneuver was carried out during the inspection of the vehicle.
Engine function test	An engine test run was performed.

## Value reducing factors

No.	Component group	Description
1	Side panel - rear right side	Side panel - dent(s) - Smart repair
2	2nd wheel set	1 tyre - Worn - Replace
3	2nd wheel set	1 tyre - Empty - Replace
4	2nd wheel set	1 tyre - Broken / torn - Replace
5	Seat - rear	Armrest - centre - Broken / torn - Replace
6	Vehicle glazing	Windscreen - Broken / torn - Replace

## Wear and tear

No.	Component group	Description
1	Interior	Interior - Scratch(es) - No deduction
2	Front bumper	Front bumper - Stone chips - No deduction
3	Bonnet	Bonnet - Stone chips - No deduction
4	Door - front right side	Door - Scratch(es) - No deduction
5	Door - rear right side	Door - Scratch(es) - No deduction
6	2nd wheel set	1 wheel cover - Scratch(es) - No deduction

The vehicle shows signs of wear and tear commensurate with its age and use.

## Missing parts

### Description

Equipment - Tirefit complete

## Previous damages

No.	Previous damage	Extent of damage (Net)
1	Side - left, Provided by user / customer, from 19 Nov 2025	1.674,74 €
2	Rear, Provided by user / customer, from 2 Aug 2024	3.046,99 €

## Repainting

### No. Repainting

1	Boot lid / rear door, Side panel - rear left side, Door - rear left side, Door - front left side, Professionally carried out, Invoice of repair done Non-existent
---	---



## Paint coat thickness measurement

Boot lid / rear door	183 µm	Side panel - rear left side	328 µm
Door - rear left side	189 µm	Door - front left side	199 µm

## Order/Scope of Order

An order was placed to prepare a sales report for the described vehicle. This report includes the following:

- Description of key vehicle information
- Documentation of equipment features  
(*Delivery by third-party service providers*)
- Documentation of damage, defects, missing parts
- Documentation of prior damage, unrepaired prior damage, repainting
- A brief visual or functional inspection of the equipment details, if possible.  
(*Functional testing of driver assistance systems is not included in the scope of services!*)
- a photographic documentation of the vehicle

## Basis for the order

This product is based on the guidelines for vehicle returns and valuations published by Alphabet Fleet GmbH. The expert makes the specific findings in each individual case objectively, within the framework of the prescribed standards, based on their own expertise.

The vehicle inspection takes place in a fully assembled, unassembled state.

Damage or defects that can only be detected during disassembly/diagnostic work or through further investigation remain within the realm of prognostic risk. An increased risk exists due to concealed defects caused by fraudulent misrepresentation and which were not identifiable by the expert.

Damage or defects resulting from normal use or wear and tear of the vehicle will be accepted in accordance with the applicable standard.

There was no explicit identification or monetary consideration of the expected features within the product.

Features which, in their nature and extent, slightly exceed normal use but do not constitute unacceptable damage, will be documented and indicated as signs of wear, if applicable.

Damage or defects that, according to the applicable standard, can no longer be attributed to normal use or wear and tear are listed under "Value Reducing Factors" in the product description.

Depending on the product specification, a monetary ID can be provided. If this takes place, the costs can be 100% d or pro rata depending on the vehicle's age and mileage.

## Previous damages

According to available information previous damages were repaired at the vehicle. Traces of repairs, which allow conclusions about the area of repair, were not recognizable during the inspection.

## Comments

- Winterradsatz ist kein Bestandteil des Auslieferungsumfangs.



Figure 1: Diagonal front (left)



Figure 2: Diagonal front (right)



Figure 3: Diagonal rear (left)



Figure 4: Diagonal rear (right)



Figure 5: Interior - front



Figure 6: Interior - rear



Figure 7: Instrument cluster



Figure 8: Instrument panel



Figure 9: Interior 360° view



Figure 10: Cargo area

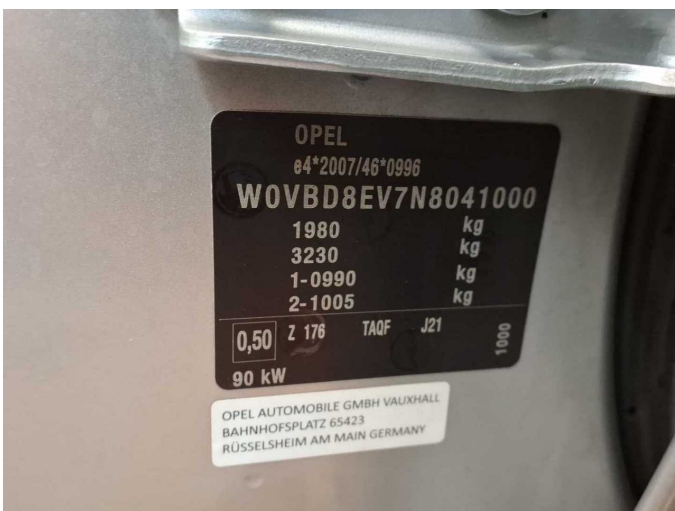


Figure 11: VIN



Figure 12: Mounted tyres



Figure 13: Documents



Figure 14: Documents



Figure 15: Documents



Figure 16: Documents



Figure 17: Additional tyres



Figure 18: Navigation



Figure 19: Misc.



Figure 20: Misc.

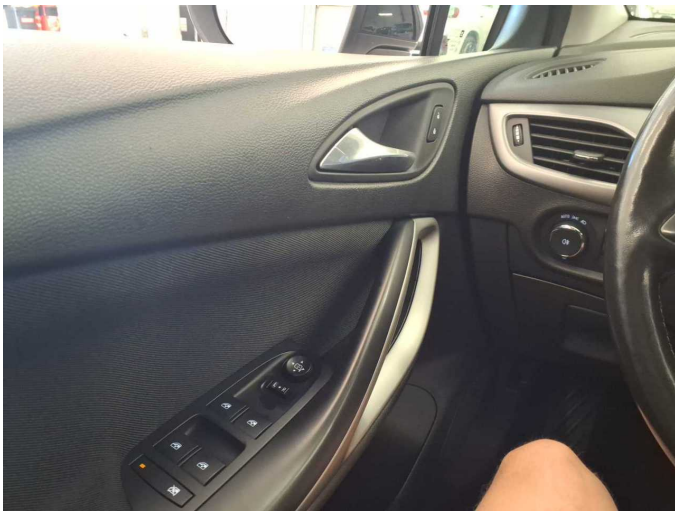


Figure 21: Misc.



Figure 22: Misc.

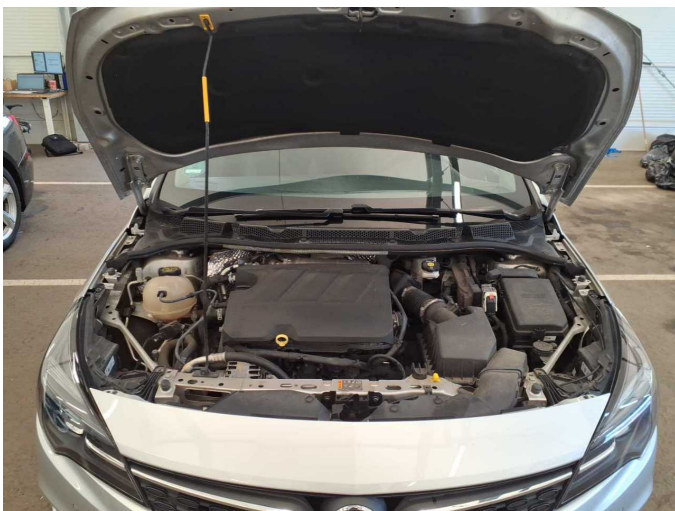


Figure 23: Misc.



Figure 24: Misc.



Figure 25: Misc.



Figure 26: Misc.



Damage 1: Side panel - rear right side: Side panel - dent(s) - Smart repair



Damage 1: Side panel - rear right side: Side panel - dent(s) - Smart repair



Damage 2: 2nd wheel set: 1 tyre - Worn - Replace



Damage 2: 2nd wheel set: 1 tyre - Worn - Replace



**Damage 3:** 2nd wheel set: 1 tyre - Empty - Replace



**Damage 3:** 2nd wheel set: 1 tyre - Empty - Replace



**Damage 4:** 2nd wheel set: 1 tyre - Broken / torn - Replace



**Damage 4:** 2nd wheel set: 1 tyre - Broken / torn - Replace



**Damage 5:** Seat - rear: Armrest - centre - Broken / torn - Replace



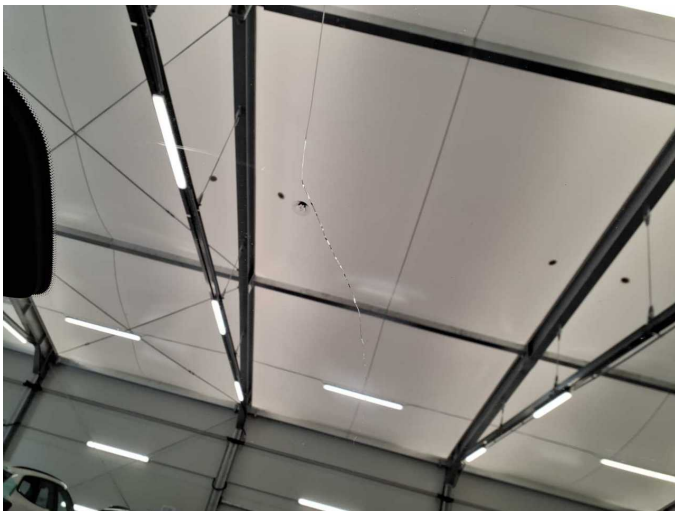
**Damage 5:** Seat - rear: Armrest - centre - Broken / torn - Replace



**Damage 6:** Vehicle glazing: Windscreen - Broken / torn - Replace



**Damage 6:** Vehicle glazing: Windscreen - Broken / torn - Replace



**Damage 6:** Vehicle glazing: Windscreen - Broken / torn - Replace



**Repainting 1:** Boot lid / rear door, Side panel - rear left side, Door - rear left side, Door - front left side



**Repainting 1:** Boot lid / rear door, Side panel - rear left side, Door - rear left side, Door - front left side



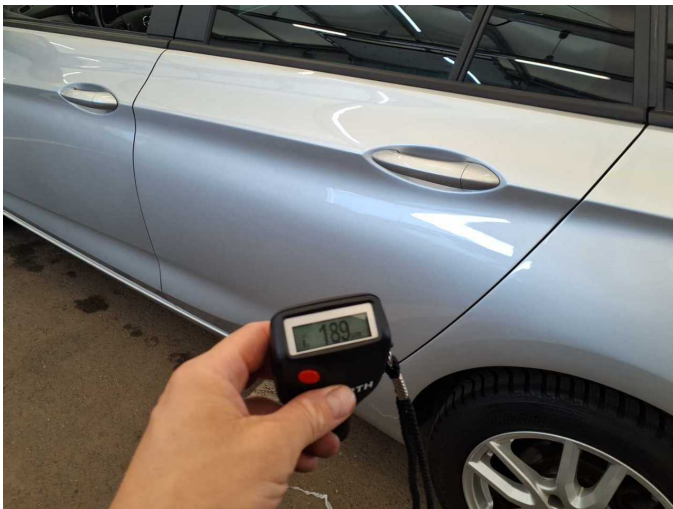
**Repainting 1:** Boot lid / rear door, Side panel - rear left side, Door - rear left side, Door - front left side



**Repainting 1:** Boot lid / rear door, Side panel - rear left side, Door - rear left side, Door - front left side



**Repainting 1:** Boot lid / rear door, Side panel - rear left side, Door - rear left side, Door - front left side



**Repainting 1:** Boot lid / rear door, Side panel - rear left side, Door - rear left side, Door - front left side



**Repainting 1:** Boot lid / rear door, Side panel - rear left side, Door - rear left side, Door - front left side



**Repainting 1:** Boot lid / rear door, Side panel - rear left side, Door - rear left side, Door - front left side



# Wartungshistorie

(gemäß Auftraggeber Informationen)

Fahrgestellnummer: W0VBD8EV7N8041000

Hersteller / Modell: OPEL OPEL Astra 1.5 D Start/Stop Sports Tourer Automatik Edition

Datum	KM-Stand	Beschreibung
14.01.2026	151.297	Keilrippenriemen; Motoröl b. Wartung; Ölfilter ern; Regelwartungsdienst; Wartung Sonstiges
02.12.2025	130.991	Motoröl b. Wartung; Ölfilter ern; Ölwechsel; Wartung Sonstiges
01.12.2025	133.462	Bremse Sonstiges; Bremsklötze hinten; Bremsscheiben + Klötze h; Bremsscheiben hinten
08.09.2025	123.210	Bremsflüssigkeit; Bremsflüssigkeit ern; Motoröl b. Wartung; Ölfilter ern; Regelwartungsdienst; Wartung Sonstiges
22.05.2025	108.917	AU; Bremsklötze hinten
06.05.2025	108.917	Reparatur Sonstiges; Systemtest/Eigendiagnose
02.01.2025	96.225	Kraftstofffilter ern; Luftfiltereinsatz ern; Regelwartungsdienst
18.12.2024	94.042	Motoröl b. Wartung; Ölfilter ern; Ölwechsel; Wartung Sonstiges
15.05.2024	64.918	Bremse Sonstiges; Bremsscheiben + Klötze h; Bremsscheiben + Klötze v; Motoröl b. Wartung; Ölfilter ern; Regelwartungsdienst; Wartung Sonstiges
04.05.2024	64.049	Reparatur Sonstiges
28.07.2023	47.688	Motoröl b. Wartung; Ölfilter ern; Regelwartungsdienst; Wartung Sonstiges
20.01.2023	29.402	Motoröl b. Wartung; Regelwartungsdienst