

Expertise

Protocol number: 46263511
Order No. / Reference: 26512789
Inspection date: 30 Jun 2026

Manufacturer: Ford

Model: Focus Turnier 1.5 EcoBlue Start-Stopp-System Aut. ST-LINE X

VIN: WF0PXXGCHPPD74955



Vehicle details

Manufacturer / Type / Model / Equipment

Ford Focus Turnier 1.5 EcoBlue Start-Stopp-System Aut. ST-LINE X

Vehicle Identification number WF0PXXGCHPPD74955

Mileage (Read) 74,186 km

First registration 21 Jun 2023

Number of holders 1

Next periodical technical inspection 06/2026

(Report not on hand)

Power / Engine displacement 85 kw / 1,499 ccm

Fuel type / Cylinder Diesel / 4

Gearbox / Number of gears Automatic / 8

Type of drive Front drive

Type of vehicle Station wagon

Colour / colour code Magnetic Metallic

Doors / Seats 5 / 5

Upholstery type Cloth

Colour of upholstery Anthracite-Black

Re-import no

readiness to drive Roadworthy



Equipment

Standard equipment

- Airbag: Passenger airbag deactivation
- Anti-lock braking system (ABS) with electronic brake force distribution (EBD)
- Attachment points behind the second row of seats for mounting the safety partition net
- Body styling kit
- Roof rails, black
- Diesel particulate filter (DPF)
- Tachometer
- Electronic Safety and Stability Program (ESP)
- Chassis: Sport-tuned
- Electric parking brake with auto-hold function
- FordPass Connect including live traffic information
- Luggage compartment lighting
- Cruise control
- Illuminated glove compartment
- rear window wiper
- Interior mirror, automatically dimming
- Isofix bracket
- Knee pads on the center console
- LED taillights
- Steering wheel: ST-Line design
- Adjustable steering column
- Armrest - centre, rear
- MyKey key system (individually programmable second key)
- Emergency call assistant
- Front and rear parking pilot system
- Post-Collision Assist
- Tire repair kit
- Rear view camera
- Headlight low beam
- Side windows from the 2nd row of seats and rear window, dark tinted.
- Seats: Passenger seat height-adjustable, manually
- Seats: Rear seat backrest
- Start-stop system
- Phone accessories: Inductive charging station for mobile devices
- Variable radiator air intake
- Warning system for unfastened seat belts for the 1st and 2nd rows of seats
- Ambient lighting, front
- Exterior mirrors painted in body color, electrically adjustable, heated and foldable
- Tires: 7 J x 17 alloy wheels (4) with 215/50 R 17 tires
- Hill start assist
- Black woven fabric headliner
- Roof spoiler painted in car color
- Digital instrument panel 12.3" (31.2 cm screen diagonal)
- Electronic Shifter
- Lane keeping assist including lane keeping assist
- Electric windows front and rear
- FordKeyFree system including Ford Power start function
- Luggage compartment cover
- Speed limiter
- Transmission: 8-speed automatic transmission
- Back window, heater
- Interior lighting with LED technology
- Intelligent security system
- Air conditioning with automatic temperature control
- Headrests: 2 front and 3 rear, height adjustable
- LED headlights
- Steering wheel: Paddle shifters on the steering wheel
- Make-up mirrors in driver and passenger sun visors
- Center console "Premium" front
- Navigation: Ford SYNC 4 including Ford navigation system with AppLink, 13.2" touchscreen and DAB/DAB+
- Upholstery: Cloth
- Pre-Collision Assist
- Tire Pressure Monitoring System (TPMS)
- Windscreen wipers with rain sensor (sensitivity adjustable)
- Headlight assistant with day/night sensor
- Selective driving mode switch
- Electromechanical speed-dependent power steering
- Seats: Driver's seat height adjustable
- Seats: Front sports seats with enhanced lateral support
- 12-volt power outlet in the luggage compartment
- Carpet floor mats front and rear, velour
- 2 USB ports in the center console, rear
- Lashing eyes in the luggage compartment
- Electronic immobilizer
- Central locking with remote control and remote luggage compartment release



Extra equipment

- Package: Driver Assistance Package II (Drive Assist Intelligent adaptive cruise control Lane keeping assist Traffic jam assist with Stop&Go Traffic sign recognition Wrong-way driver warning radio Evasive steering assist Distance display and distance warning Driver drowsiness detection High beam assist (in conjunction with adaptive LED matrix headlights with glare-free high beam assist) Blind spot assist with cross traffic alert including emergency braking function (when reversing out of parking spaces) and trailer recognition Rear view camera with split view Electrically folding exterior mirrors with surround view)
- Detachable towbar (including ESP trailer stabilization)
- Mounting points behind the 1st row of seats (according to ISO 27955, required for the installation of the safety partition available as an accessory from your Ford partner)
- Package: Winter (heated windscreen - heated steering wheel - individually and variably heated front seats)
- Paint finish: Magnetic Metallic
- Safety partition net for luggage compartment

Brief expert findings

Documents submitted	At the time of the inspection, the vehicle registration certificate Part 2 (title) was available, but the vehicle registration certificate Part 1 (document) was not. (Copy)
VIN comparison	The vehicle identification number (VIN) was read from the vehicle and its conformity with the submitted documents was confirmed by the undersigned during the inspection.
Inspection	The inspection conditions were sufficient for the assessment of the vehicle. Lifting equipment and/or a pit were available for examining the vehicle.
Test drive	No test drive/shunting maneuver was carried out during the inspection of the vehicle.
Engine function test	An engine test run was performed.
readiness to drive	The vehicle was roadworthy at the time of inspection.

Value reducing factors

No.	Component group	Description
1	Engine	Engine cover (Dämmung) - Damage caused by marten / rodent - Replace
2	Door - front left side	Door edge - Scratch(es) - Smart repair
3	Door - front right side	Door edge - Scratch(es) - Smart repair
4	Roof	Roof - dent(s) - Smooth repair work
5	Misc.	Main inspection - Due - Perform
6	Wheel / tyres	Alloy rim - front right side - Scratch(es) - Loss in value
7	Side panel - rear right side	Side panel - Dent / paintcoat damage - Smart repair

Missing parts

Description

Engine - Engine cover

Order/Scope of Order

An order was placed to prepare a sales report for the described vehicle. This report includes the following:

- Description of key vehicle information
- Documentation of equipment features
(*Delivery by third-party service providers*)
- Documentation of damage, defects, missing parts
- Documentation of prior damage, unrepaired prior damage, repainting
- A brief visual or functional inspection of the equipment details, if possible.
(*Functional testing of driver assistance systems is not included in the scope of services!*)
- a photographic documentation of the vehicle



Basis for the order

This product is based on the guidelines for vehicle returns and valuations published by Alphabet Fleet GmbH. The expert makes the specific findings in each individual case objectively, within the framework of the prescribed standards, based on their own expertise.

The vehicle inspection takes place in a fully assembled, unassembled state.

Damage or defects that can only be detected during disassembly/diagnostic work or through further investigation remain within the realm of prognostic risk. An increased risk exists due to concealed defects caused by fraudulent misrepresentation and which were not identifiable by the expert.

Damage or defects resulting from normal use or wear and tear of the vehicle will be accepted in accordance with the applicable standard.

There was no explicit identification or monetary consideration of the expected features within the product.

Features which, in their nature and extent, slightly exceed normal use but do not constitute unacceptable damage, will be documented and indicated as signs of wear, if applicable.

Damage or defects that, according to the applicable standard, can no longer be attributed to normal use or wear and tear are listed under "Value Reducing Factors" in the product description.

Depending on the product specification, a monetary ID can be provided. If this takes place, the costs can be 100% d or pro rata depending on the vehicle's age and mileage.

Previous damages

No apparent prior damage that had been repaired could be found on the vehicle.

Comments

- Wartungshistorie gemäß Auftraggeber Informationen.



Figure 1: Diagonal front (left)



Figure 2: Diagonal front (right)



Figure 3: Diagonal rear (left)



Figure 4: Diagonal rear (right)



Figure 5: Interior - front



Figure 6: Interior - rear



Figure 7: Instrument cluster



Figure 8: Instrument panel



Figure 9: Interior 360° view



Figure 10: Cargo area



Figure 11: VIN



Figure 12: Mounted tyres

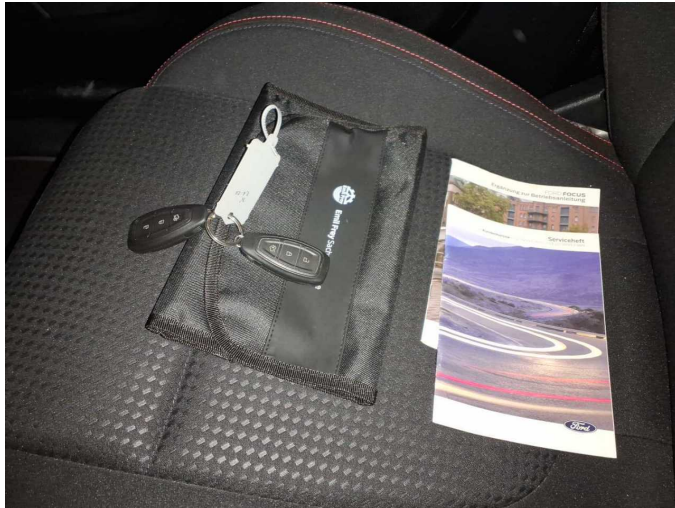


Figure 13: Documents

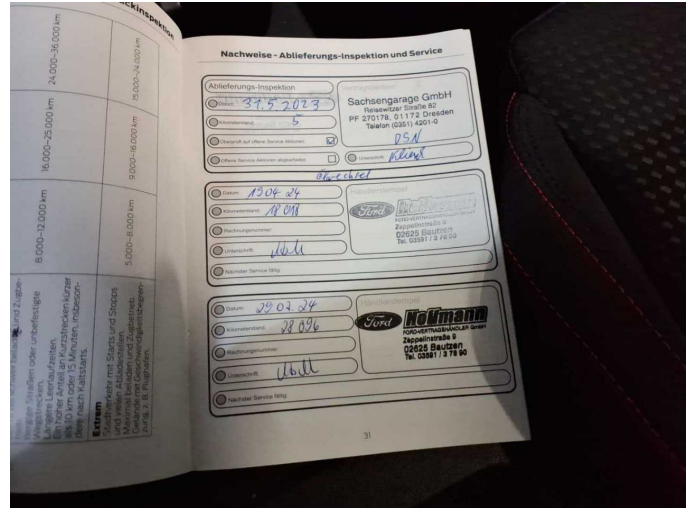


Figure 14: Documents

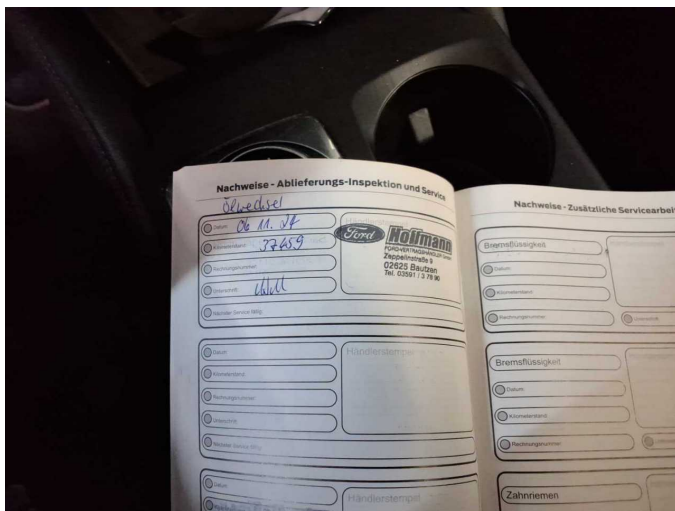


Figure 15: Documents



Figure 16: Navigation

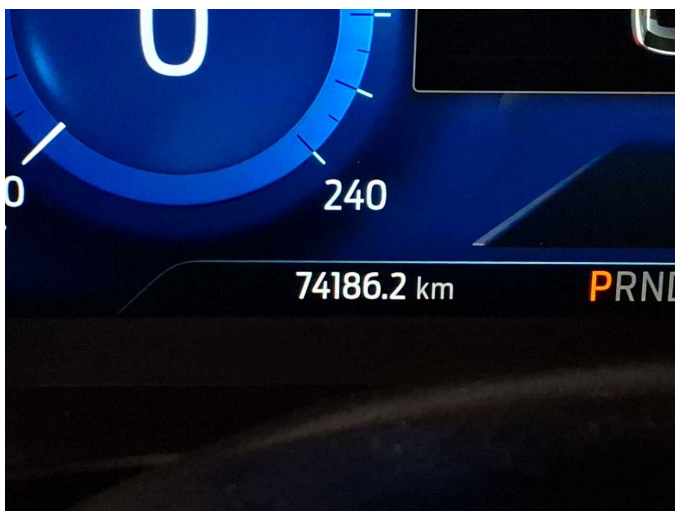


Figure 17: Misc.



Figure 18: Misc.



Figure 19: Misc.



Figure 20: Misc.



Figure 21: Misc.



Figure 22: Misc.



Figure 23: Misc.



Figure 24: Misc.



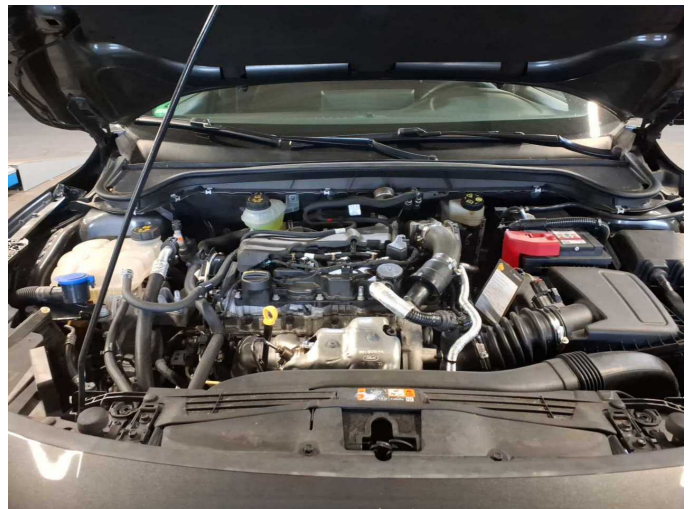
Figure 25: Misc.



Figure 26: Misc.



Figure 27: Misc.



Damage 1: Engine: Engine cover (Dämmung) - Damage caused by marten / rodent - Replace



Damage 1: Engine: Engine cover (Dämmung) - Damage caused by marten / rodent - Replace



Damage 1: Engine: Engine cover (Dämmung) - Damage caused by marten / rodent - Replace



Damage 2: Door - front left side: Door edge - Scratch(es) - Smart repair



Damage 2: Door - front left side: Door edge - Scratch(es) - Smart repair



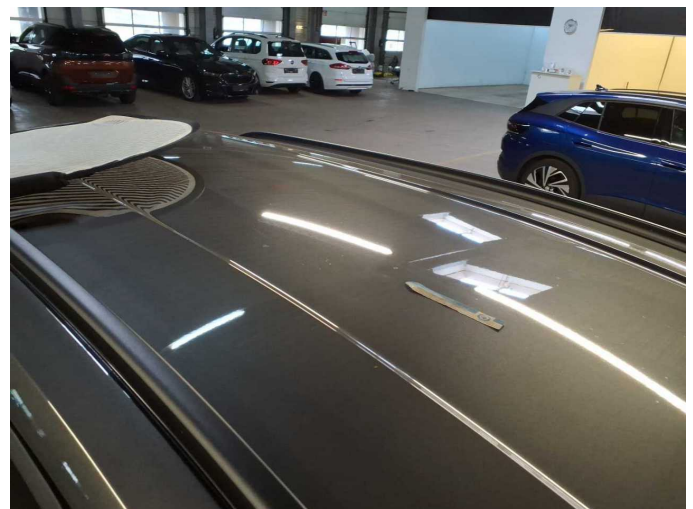
Damage 2: Door - front left side: Door edge - Scratch(es) - Smart repair



Damage 3: Door - front right side: Door edge - Scratch(es) - Smart repair



Damage 3: Door - front right side: Door edge - Scratch(es) - Smart repair



Damage 4: Roof: Roof - dent(s) - Smooth repair work



Damage 4: Roof: Roof - dent(s) - Smooth repair work



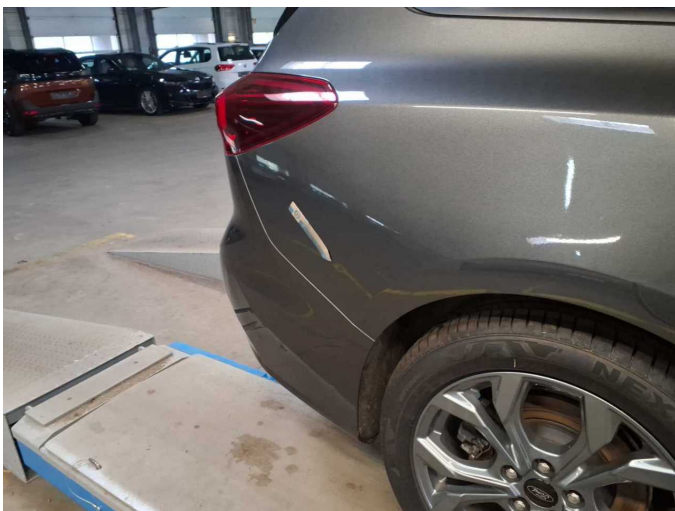
Damage 6: Wheel / tyres: Alloy rim - front right side - Scratch(es) - Loss in value



Damage 6: Wheel / tyres: Alloy rim - front right side - Scratch(es) - Loss in value



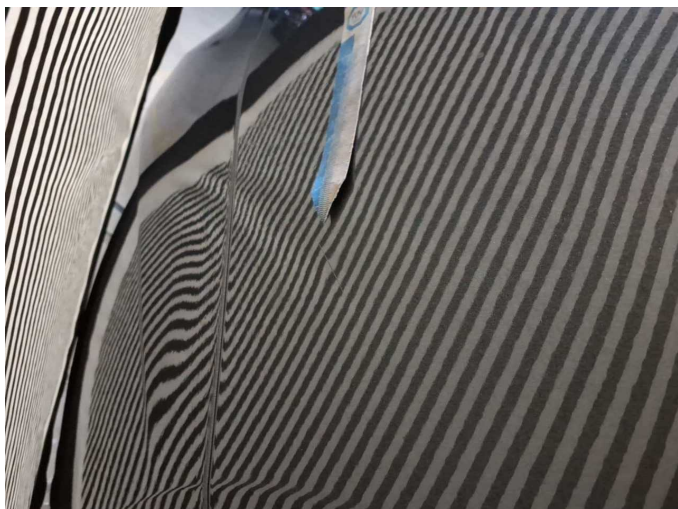
Damage 6: Wheel / tyres: Alloy rim - front right side - Scratch(es) - Loss in value



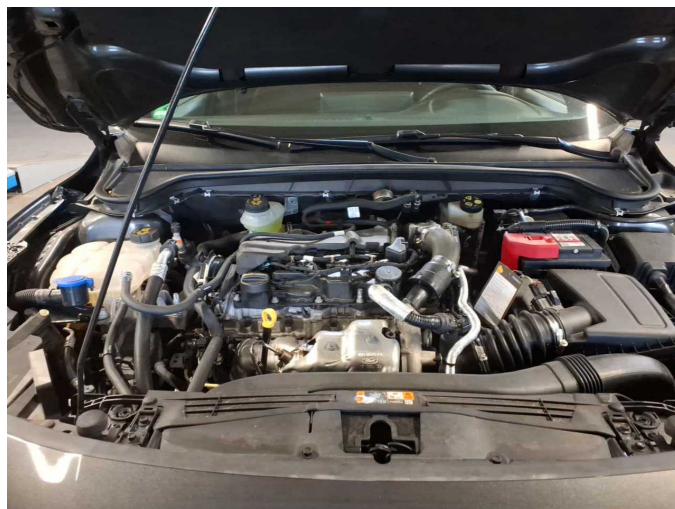
Damage 7: Side panel - rear right side: Side panel - Dent / paintcoat damage - Smart repair



Damage 7: Side panel - rear right side: Side panel - Dent / paintcoat damage - Smart repair



Damage 7: Side panel - rear right side: Side panel - Dent / paintcoat damage - Smart repair



Missing part 1: Engine: Engine cover - Missing - Replace



Wartungshistorie

(gemäß Auftraggeber Informationen)

Fahrgestellnummer: WF0PXXGCHPPD74955
Hersteller / Modell: FORD FORD Focus Turnier 1.5 EcoBlue Start-Stopp-System Aut. ST-LINE

Datum	KM-Stand	Beschreibung
06.08.2025	64.239	Bremsflüssigkeit; Bremsflüssigkeit ern; Kraftstofffilter ern; Luftfiltereinsatz ern; Motoröl b. Wartung; Ölfilter ern; Regelwartungsdienst; Wartung Sonstiges
17.07.2025	59.198	Reparatur Sonstiges; Spannrolle ern; Systemtest/Eigendiagnose; Wasserpumpe ern; Zahnriemen/Steuerkett ern
07.03.2025	49.252	Motoröl b. Wartung; Ölfilter ern; Ölwechsel; Wartung Sonstiges
07.11.2024	37.459	Motoröl b. Wartung; Ölfilter ern; Ölwechsel; Wartung Sonstiges
30.07.2024	28.096	Motoröl b. Wartung; Regelwartungsdienst; Systemtest/Eigendiagnose
19.04.2024	18.018	Motoröl b. Wartung; Ölfilter ern; Ölwechsel; Wartung Sonstiges