

## » Overview

**Order number:** 1002366237  
**Order completed:** 17.03.2026 12:38  
**Report number:** 10262627  
**VIN:** WVVZZZ3C8RE036638



Front Left 3/4



Rear Right 3/4



Mileage

## » Vehicle Data

<b>Vehicle category:</b>	Passenger Car
<b>Vehicle type:</b>	EstateCar
<b>Make:</b>	Volkswagen
<b>Model:</b>	Passat
<b>Manufacturers and type code:</b>	0603 / CMM
<b>Date of first registration:</b>	14.02.2024
<b>Mileage:</b>	111,569 km
<b>Proof of mileage:</b>	ReadOff
<b>Exterior colour:</b>	Tornadorot
<b>Roof colour:</b>	Tornadorot
<b>Propulsion:</b>	Front
<b>Fuel:</b>	Diesel
<b>Engine size (cc):</b>	2,000 ccm
<b>Performance:</b>	90 kW (123 PS)
<b>Length:</b>	
<b>Height:</b>	
<b>Width:</b>	
<b>Permitted total weight:</b>	
<b>Wheelbase:</b>	
<b>Number of powered axles:</b>	2
<b>Cylinders:</b>	4
<b>Euronorm:</b>	Euro 6
<b>Number of doors:</b>	4
<b>Number of seats:</b>	5
<b>Gearbox:</b>	Automatic 7-speed
<b>Upholstery type:</b>	Lining fabrics
<b>Interior colour:</b>	Titanschwarz/Titanschwarz/Titanschwarz
<b>Number of keys:</b>	2

## » Documents & Maintenance

<b>Statutory inspection date:</b>	
<b>Registration certificate available:</b>	Yes
<b>Registration certificate received:</b>	No
<b>License plate:</b>	None
<b>Maintenance book:</b>	Digital
<b>Maintenance:</b>	Not testable
<b>Maintenance last date:</b>	
<b>Maintenance last mileage:</b>	

<p>"Business Premium" package incl. navigation system</p> <p>12-V outlet in center console in rear and in luggage compartment</p> <p>2 beverage holders in front with cover</p> <p>2 USB-C ports in the front, 1 USB-C charging socket on the center console in rear, charging capacity up to 45 W</p> <p>230-V outlet in center console in rear</p> <p>3 head restraints in rear</p> <p>3-point seat belt for center rear seat</p> <p>3-point seat belts for outer rear seats</p> <p>3-point seat belts in front with height adjustment and seat belt pretensioners</p> <p>4 alloy wheels "Sepang" 6.5J x 16</p> <p>4-cylinder diesel engine 2.0 l</p> <p>4-cylinder diesel engine 2.0 l TDI, 90 kW</p> <p>7-speed automatic transmission or dual-clutch transmission DSG, note: PR family EDF</p> <p>8 speakers</p> <p>Adaptive Cruise Control ACC stop &amp; go incl. speed limiter</p> <p>Air Care Climatronic 3 zone automatic climate control w/ allergen filter, enhanced air filter a. controls in rear</p> <p>Alternator 140 A</p> <p>Anti-theft alarm system</p> <p>Anti-theft alarm system with interior monitoring, backup horn, and towing protection</p> <p>App-Connect Wireless for Apple CarPlay and Android Auto</p> <p>Aspherical exterior mirror on driver side</p> <p>Aut. headlight control with separate daytime running light, entry lighting and manual exit lighting</p> <p>Auto-dimming interior rearview mirror</p> <p>Automatically-heated washer nozzles in front</p> <p>Autonomous Emergency Braking Front Assist (for Adaptive Cruise Control ACC up to 210 km/h)</p> <p>Basic equipment variant</p> <p>Battery 420 A (70 Ah)</p> <p>Black roof rails</p> <p>Body-colored lower side trims</p> <p>Bumpers with body-colored decorative trims</p> <p>Business</p> <p>Carpet mats in front and rear</p> <p>Carrier frequency 433.92 MHz-434.42 Mhz</p> <p>Category 0</p> <p>Child safety lock</p> <p>Chrome trims on the side windows</p> <p>Comfort seats in front</p> <p>Curtain airbag system for front and rear passengers incl. side airbags in front</p>	<p>Decorative inserts "Cross Hatch" for dashboard and door trim panels</p> <p>Decorative inserts "Piano Black" for center console</p> <p>Digital radio reception DAB+</p> <p>Disc brakes in front</p> <p>Disc brakes in rear</p> <p>Diversity antenna for FM reception</p> <p>Door and side trim panel in foam film and woven fabric</p> <p>Driver alert system</p> <p>Driver and front passenger airbag with front passenger airbag deactivation</p> <p>Driving on the right</p> <p>Dual-clutch transmission DSG DQ200</p> <p>Dynamic Road Sign Display</p> <p>Electric auxiliary air heater</p> <p>Electromechanical parking brake with Auto Hold function</p> <p>Electromechanical speed-sensitive power steering</p> <p>Electronic engine sound</p> <p>Electronic Stability Control and electromechanical brake booster</p> <p>Elimination of nameplate for engine designation on luggage compartment lid</p> <p>Emergency call service, 10-year contract duration as of initial delivery, condition: mob. phone network available</p> <p>Emission standard EU6 AP</p> <p>Equipment options subset for Germany</p> <p>Exterior mirrors, power-adjustable and heated, surround lighting, auto-dimming on driver side</p> <p>First aid kit, warning triangle and safety vest</p> <p>Folding luggage compartment floor</p> <p>Front center armrest, height- and longitudinally adjustable, w/ storage comp., 2 vents w/ chrome louvers in rear</p> <p>Front seats with height adjustment, ergoComfort seat on driver side, with electrical backrest adjustment</p> <p>Front vent and rotary light switch illuminated, with chrome bezel</p> <p>Front-wheel drive</p> <p>Fuel system for diesel engine</p> <p>Fuel tank with a volume of 66 l</p> <p>Gearshift knob in leather</p> <p>Green heat-insulating glass windows on sides and in rear</p> <p>Headlight range control</p> <p>Heated front seats</p> <p>Hill start assist</p> <p>Illuminated vanity mirror in sun visors, extractable sun visors</p> <p>Initial standard fuel filling</p> <p>Inserts of front seats and outer rear seats in fabric "Business"</p>
---	--

Instrument cluster with electronic speedometer, odometer and trip odometer, tachometer	Radio
Interior lights with switch-off delay and dimmer, 2 LED reading lights in front and 2 in rear	Rain sensor
ISOFIX anchorage points for mounting of 2 child seats on rear bench seat, also for i-Size child seats	Rear exhaust tailpipe (standard)
Keyless Start with SAFELOCK	Rear fog light on one side, back-up light on both sides
Laminated safety glass windshield, heat- and sound-insulating	Rear shock absorption, basic version 1
Leather multi-function steering wheel with shifting paddles	Rear view camera system
LED entry/warning lights in front doors	Refrigerant R1234yf
LED front fog lamps and cornering light	Regional code " ECE " for radio
LED headlamps with LED separate daytime running light	Remote unlocking for tailgate/trunk lid
LED light unit in front footwell	Removable luggage compartment protective mat, back of rear bench seat backrest covered with black rubber
LED rear combination lamps	Right exterior mirror, convex
Left-hand drive	Safety-optimized front head restraints, longitudinally and height adjustable
LongLife Service Regime	Semi-automated driving assistance Travel Assist and lane keeping system Lane Assist
Luggage compartment cover extractable and removable	Service indicator 30 000 km or 2 years (variable)
Luggage net	Shock absorption in front
Lumbar supports in front, power- adjustable on driver side, massage feature on driver side	Special identification label for EC for M1 passenger vehicles
Manual in German (Germany)	Standard battery/alternator capacity
Mass damper for steering wheel, 36 Hz	Standard climatic zones
Mistral Gray headliner	Standard engine starter
Mobile phone interface "Comfort" with inductive charging feature	Standard manufacturing sequence
Multi-color Digital Cockpit Pro, selection of different info profiles possible	Standard paint coating
Multifunction camera	Standard pedal cluster
Navigation system "Discover Pro" incl. Streaming & Internet	Standard roof
Navigation system "Discover Pro" incl. Streaming & Internet	Standard wheel bolts
Net partition	Start-stop system with regenerative braking
No special edition	Suspension range 34 installation control only, no requirement forecast
No special purpose vehicle, standard equipment	Tire Mobility Set: 12-volt compressor and tire sealant
Non-folding front passenger seat backrest	Tire Pressure Monitoring System
Non-smoker's package: Storage compartment and 12-V outlet in front	Tires 215/60 R16, rolling resistance class A
Not hot country	Tires without specification of tire brand
Online service, with OCU, with head unit coding, without engine immobilizer interconnection	Tool kit and jack
Operating permit, alteration	Transport protection film (minimum protection) with additional transport protection measures
Park Distance Control - warning signals for obstacles in the front and rear	Two-tone horn
Part set without country-specific prescriptive standard	Type approval country Germany
Pedestrian Monitoring	Unsplit rear bench seat, asymmetric folding backrest, center armrest with storage comp. and load-through hatch
Plastic loading edge protection	Vehicle class differentiation -3G0-
Plastic scuff plates in door apertures	Vehicles with special upgrade measures
Preparation for mobile key for vehicle access via smartphone	Voice control
Preparation for We Connect and We Connect Plus or VW Connect and VW Connect Plus	Wagon
Proactive passenger protection system in combination with Front Assist	Warning signal and warning lamp for front and rear seat belts not fastened

Weight range 3 installation control only, no requirement forecast

Wheelbase

Winter wheels (additional), 4 steel wheels 6.5J x 16, AirStop® snow tires 215/60 R16 H, wheel trims

With electronic steering column lock

Without activated carbon canister with SCR

Without Adaptive Chassis Control

Without add. lights (interior lighting)

Without additional front underbody guard

Without alternative drive system

Without auxiliary heater/parking heater

Without CD/DVD for navigation

Without charging cable

Without child seat

Without clock

Without delivery equipment

Without differential lock

Without ECO function

Without electric motor (hybrid)

Without fire extinguisher

Without front passenger seat control

Without garage door opener

Without headlamp washer system

Without head-up display

Without integrated toll system

Without lane change assist

Without light control

Without preparation for rotating beacon/siren combination

Without preparation for two-way radio installation

Without preparation for VTS (vehicle tracking system)

Without rear spoiler

Without roll-up sunshade

Without seat ventilation/massage seat

Without second battery

Without special body measures

Without trailer hitch

Without vehicle inlet

## » Tyres

### MOUNTED TYRES

Make	Location	Position	Type	Rim	Dimensions	Profile depth
Goodyear	Front	Left	Winter	Steel	215/60 R 16 95 H	6.0 mm
Goodyear	Front	Right	Winter	Steel	215/60 R 16 95 H	6.0 mm
Pirelli	Rear	Left	Winter	Steel	215/60 R 16 95 H	4.0 mm
Pirelli	Rear	Right	Winter	Steel	215/60 R 16 95 H	4.0 mm

**Permitted:** Yes

**Roadworthy:** Yes

### UNMOUNTED TYRES

Make	Location	Position	Type	Rim	Dimensions	Profile depth
Dunlop			Summer	Aluminium	215/60 R 16 95 V	6.0 mm
Dunlop			Summer	Aluminium	215/60 R 16 95 V	6.0 mm
Dunlop			Summer	Aluminium	215/60 R 16 95 V	5.0 mm
Dunlop			Summer	Aluminium	215/60 R 16 95 V	5.0 mm

**Permitted:** Yes

**Roadworthy:** Yes

### SPARE/EMERGENCY TYRE & ACCESSORIES

**Toolkit present:** Yes

**Repair kit present:** Yes

**Repair kit expiration date:** 10.2027

**Compressor present:** Yes

## » Devaluation Factors

Nr	Location	Damage type	Repair type
1	Side wall RL	Dent(s)	Repair and paint (complete)
2	Preparationtime metal painting	Paint preparation	Execute
3	Boot lid covering R	Scratch(es)	Replace
4	Compressor	Damaged	Replace
5	Bumper R	Scratch(es)	Smart repair
6	Door RL	Scratch(es)	Touch up

## » Usage Damages

Nr	Location	Damage type	Repair type
1	Roof	Dent(s)	Acceptable

## » Commercial devaluation

Known previous damages:	Yes
Previous damages detectable:	No
Repainting present:	Yes
Repainting professionally executed:	Yes
Paint thickness measurement performed:	Yes - with abnormalities/deviations

Nr	Location	Damage	Repair type	Repair cost
1	Other	Fully comprehensive harm		€ 9,957.01
<b>Total without VAT:</b>				€ 9,957.01

### PAINTTHICKNESS MEASUREMENT RESULTS

Part	Paint (µm)
Paint thickness Door RR (µm)	198.0
Paint thickness Wing FR (µm)	170.0

At least 3 measurements were carried out per component.

## » Notes On The Assessment

**Details of the assignment and the scope of the assessment:**

The order was placed to prepare a condition report on the described vehicle.

The vehicle condition assessment was carried out in accordance with the order on the basis of the standards for vehicle assessments specified by the client. The expert makes the findings in the individual case on the basis of his own expertise and at his own expert discretion.

**Vehicle identification:**

WVWZZZ3C8RE036638

VIN checked and matches documentation

**Vehicle condition:**

Dirty

**Inspection condition:**

Wet

**Lifting platform/lifting equipment used:**

No

**Testdrive carried out:**

No

**Engine test carried out:**

Yes

» **Remarks**

This copy was generated electronically. It is valid without an original signature.

## » Commercial Pictures



Front Left 3/4



Front Right 3/4



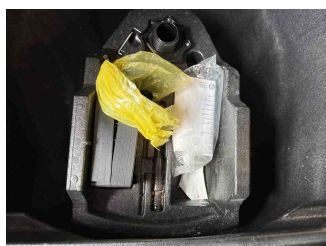
Rear Left 3/4



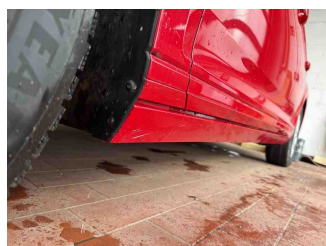
Rear Right 3/4



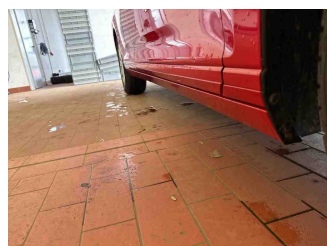
Mileage



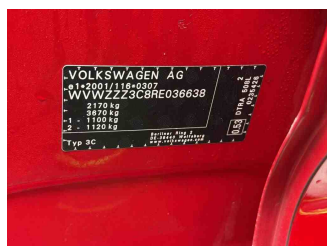
Tools



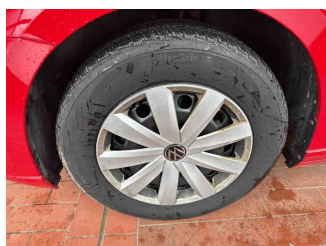
Sill outer L



Sill outer R



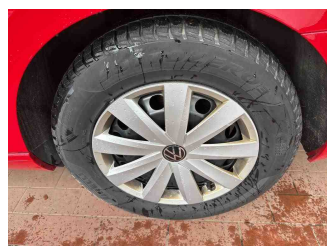
Chassis nr



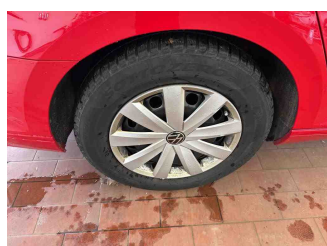
Wheel FL



Wheel FR



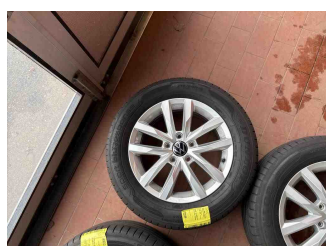
Wheel RL



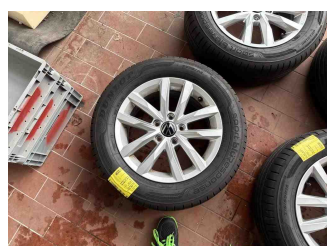
Wheel RR



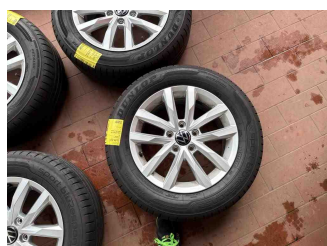
Additional wheel 1



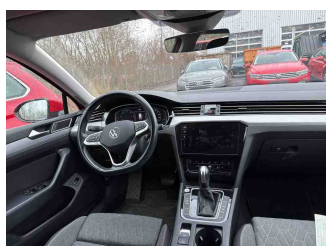
Additional wheel 2



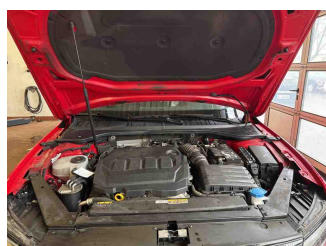
Additional wheel 3



Additional wheel 4



Central console



Engine compartment



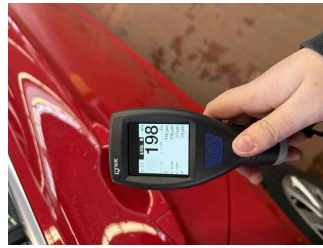
Documents



Interior arrangement



Registration Certificate



Paint thickness Door RR



Paint thickness Wing FR



History Maintenance



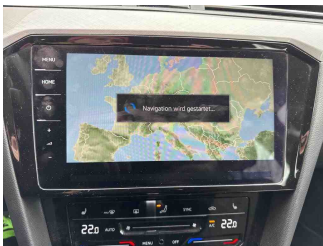
Interior - front



Interior - rear



Tirefit expiration date

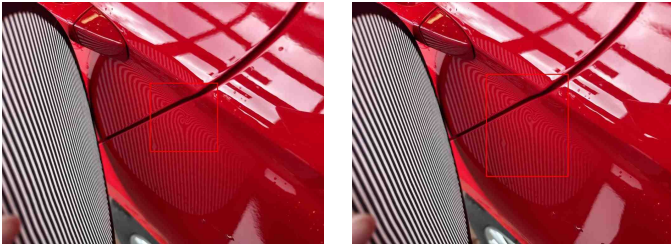


GPS/Radio

## » Devaluation Damages

### DEVALUATION FACTORS

1 - Side wall RL - Dent(s) - Repair and paint (complete)

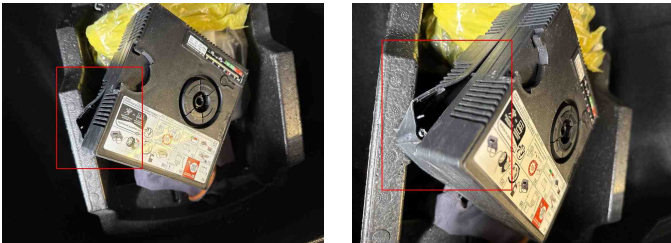


2 - Preparationtime metal painting - Paint preparation - Execute

3 - Boot lid covering R - Scratch(es) - Replace



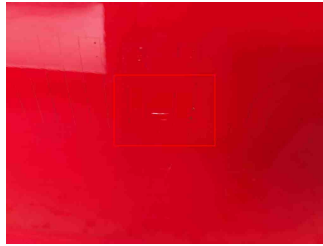
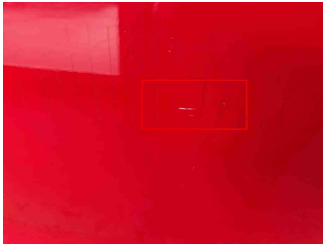
4 - Compressor - Damaged - Replace



5 - Bumper R - Scratch(es) - Smart repair



6 - Door RL - Scratch(es) - Touch up



## USAGE DAMAGES

1 - Roof - Dent(s) - Acceptable

