



# Assessment

- Vehicle Inspection Report -

Number: 10606329  
From: 13.05.2026

## » Overview

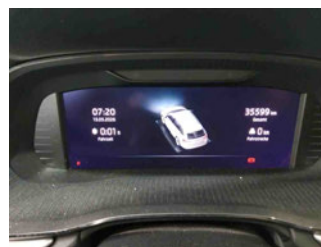
**Order number:** 1002423842  
**Order completed:** 13.05.2026 07:48  
**Report number:** 10606329  
**VIN:** TMBJG8NX5RY148048



Front Left 3/4



Rear Right 3/4



Mileage



# Assessment

- Vehicle Inspection Report -

Number: 10606329  
From: 13.05.2026

## » Vehicle Data

<b>Vehicle category:</b>	Passenger Car
<b>Vehicle type:</b>	EstateCar
<b>Make:</b>	Skoda
<b>Model:</b>	Octavia
<b>Manufacturers and type code:</b>	8004 / AWK
<b>Date of first registration:</b>	19.03.2024
<b>Mileage:</b>	35,599 km
<b>Proof of mileage:</b>	ReadOff
<b>Exterior colour:</b>	Candy-Weiss
<b>Roof colour:</b>	Candy-Weiss
<b>Propulsion:</b>	Front
<b>Fuel:</b>	Diesel
<b>Engine size (cc):</b>	1,968 ccm
<b>Performance:</b>	85 kW (116 PS)
<b>Length:</b>	
<b>Height:</b>	
<b>Width:</b>	
<b>Permitted total weight:</b>	
<b>Wheelbase:</b>	
<b>Number of powered axles:</b>	2
<b>Cylinders:</b>	4
<b>Euronorm:</b>	Euro 6
<b>Number of doors:</b>	4
<b>Number of seats:</b>	5
<b>Gearbox:</b>	Automatic 7-speed
<b>Upholstery type:</b>	Lining fabrics
<b>Interior colour:</b>	Schwarz
<b>Number of keys:</b>	3

## » Documents & Maintenance

<b>Statutory inspection date:</b>	
<b>Registration certificate available:</b>	No
<b>Registration certificate received:</b>	No
<b>License plate:</b>	None
<b>Maintenance book:</b>	Digital
<b>Maintenance:</b>	Not testable
<b>Maintenance last date:</b>	
<b>Maintenance last mileage:</b>	
<b>Remainder until next maintenance:</b>	14,700 KM



# Assessment

Number: 10606329  
From: 13.05.2026

- Vehicle Inspection Report -

"DRIVER ALERT" - driver alert system	DAB - Digital radio reception
"FRONT ASSIST" - with warning and braking reaction to vehicles, pedestrians and cyclists	Dashboard, black, with PAD - Style, RS, Scout; RS grey stitching
"PARK ASSIST" - Parking assistant, park distance control (parking sensors front and rear)	Decorative insert "Silver Squares Haptik"
"SMART LINK" (wired and wireless connect)	Disc brakes in front (Geomet D)
"SUNSET" + front side acoustic windows	Disc brakes in rear
"TRAVEL ASSIST HIGH"	Door and side trim panel (umbrella)
12-volt socket in luggage boot	Driver knee airbag
2x USB in front, 2x USB in rear (middle- console), 1x USB in rear-view mirror	Driving on the right
3-point seat belt for center rear seat	Driving profile selection and conventional shock absorber
3-point seat belts in front, with tensioner and height adjustment	Electric auxiliary air heater
3-point seat belts, outer rear with ECE label	Electronic differential lock XDS, dynamic traction support
4 doors	Electronic immobilizer
4-cyl. turbo dies. eng. 2.0 l/85 kW (4V) TDI common rail base engine is T0N/T6M/TL4/TR1/T3Y	Emergency call system eCall+
4-cylinder diesel engine 2.0 l unit 05L.C	Emission standard EU6 AP
7-speed automatic transmission	Equipment options subset for Germany
8 speakers (passive)	Ext.rear v. mirr.w.memory;el.adjusted- auto dimm.(driver), heated,w.tilt by rev .(pass.),housing.el.powerf.,board.spot
A8	Exterior mirror housings and various add-on parts in body color
Adaptive cruise control (with "follow-to-stop") and speed limiter	Exterior mirrors: convex on driver side, convex on front passenger side
Additional exterior noise suppression	Freely programmable instrument cluster Medium
Additional retro-reflectors (door area)	Front fog lamps
Additional stone guard body covers	Front stabilizer bar
Alloy wheels "ROTARE AERO" 7J x 17" - 4 pcs	Front-wheel drive
Alternator 180 A	Fuel system for diesel engine
Antenna for FM reception only, diversity	Head restraints, front
Basic equipment variant	Head restraints, rear (3)
Battery 420 A (70 Ah)	Headlight range control
Body-colored bumpers	Head-up display
Brake control system for vehicles without electric drive (ESC and electromechanical brake booster)	Heated windshield
Breakaway interior rearview mirror, auto-dimming	Heated winscreen washer nozzles
Breakdown kit	Hill start assist
Center armrest in front	Initial standard fuel filling (6L)
Center console	Installation differentiation for transmission DQ200 -- vehicle components --
Child seat anchors f. child seat system i-Size, 2x top tether and child seat anchors in front on front passenger side	Instrument cluster, km/h speedometer
Chrome package	Interior ambient lighting and surround lighting
Climatronic (3-zone) with air conditioning control panel in rear	Interior light in footwell in front and rear
Columbus PLUS Business	Keyless locking and starting system "Keyless Advanced" without SAFELOCK
Comfort seats in front (sports seats for RS)	Komfort BASIS
Comfort telephony without external antenna connection with wireless charging	Lane Assist with adaptive lane guidance function + Emergency Assist
Curb weight range 1	Leather-wrapped multi-function steering wheel, heated, with tiptronic



# Assessment

Number: 10606329  
From: 13.05.2026

- Vehicle Inspection Report -

LED headlamps	Service indicator 30 000 km or 2 years ( variable )
LED rear combination lamp, variable lighting functions, special styling	Shock absorption in front
Left-hand drive	Side airbag in front with curtain airbag and interaction airbag in front
LongLife Service Regime	Side Assist
Luggage compartment cover, sliding	Special identification label for EC for M1 passenger vehicles
Luggage compartment floor covering in needle-punched nonwoven (dimensionally stable)	Special interior noise suppression
Luggage compartment lighting	Speed-related variable steering assist (Servotronic)
Luxury equipment	Standard battery/alternator capacity
Manual child safety lock	Standard climatic zones
Manual in German	Standard electronic engine sound
Mass damper for steering wheel, XX Hz	Standard manufacturing sequence
Mechanical rear seat release	Standard paint coating
Nameplate set in basic style	Standard pedal cluster
Navi Columbus + Web radio	Standard rear axle
Net partition	Standard wheel bolts
Net program + cargo elements	Start-stop system with regenerative braking
No special edition	Storage compartments in trunk
No special purpose vehicle, standard equipment	Sun visors with illuminated vanity mirror on driver and front passenger side
Not hot country	Suspension range 06 installation control only, no requirement forecast
Operating permit, alteration	Tablet bracket, 3rd key, waste bin in the door
Operating voltage 12 V	Tailgate/trunk lid release
Optional infotainment system (MIB3)	Tire pressure monitoring system
Parking brake	Tire suppliers for EU countries
Part set without country-specific prescriptive standard	Tires 205/55 R17 91V Low Rolling Resistance
Power seat adjustment for both front seats with memory feature	Tool kit
Power windows with comfort operation and circuit breaker	Transport
Power-adjustable lumbar support in front seats	Transport protection film (minimum protection) with additional transport protection measures
Rear axle weight, type 1	Trims for alloy wheels
Rear exhaust tailpipe (standard)	Two-tone horn
Rear floor panel module, type 4	Type approval country Germany
Rear fog light on one side, back-up light on both sides	Unsplit molded headliner
Rear shock absorption, basic version 1	Unsplit rear seat bench, split folding backrest, with center armrest
Rear spoiler	UWB-capable country and carrier frequency, 433.92 to 434.42 MHz
Rear window wiper "AERO"	Variable luggage/load compartment floor
Refrigerant R1234yf	Vehicle class differentiation -5EN-
Regional code " ECE " for radio	Vent
Remote Access / Remote Access + Online Infotainment	Visual and acoustic seat belt reminder, electric contact in front and rear
Remote Access + Infotainment Online 3 years	Voice control
Roof rails	Wagon/Avant
Seat heater for front and rear seats separately controlled	Weight range 12 installation control only, no requirement forecast
Seat trim covers in fabric	
Separate daytime running light	



# Assessment

- Vehicle Inspection Report -

Number: 10606329  
From: 13.05.2026

## Wheelbase

Windshield wiper intermittent control with light/rain sensor

With dynamic road sign display

With emergency steering support with turn assist

With multifunction camera

Without activated carbon canister with SCR

Without adapter

Without additional front underbody guard

Without additional malfunction display

Without additional tires

Without alternative drive system

Without auxiliary heater/parking heater

Without backrest release for front seats

Without camera systems/accident sensors

Without Car2X

Without charging cable

Without delivery equipment

Without electric motor (hybrid)

Without extended safety system

Without floor mats

Without folding table on front seat backrest

Without gearshift knob/handle

Without headlamp washer system

Without light control

Without locking and starting systems

Without mode 3 charging cable

Without mud flap

Without protective film for scuff plate

Without rear stabilizer bar

Without roof insert (standard roof)

Without seat ventilation/massage seat

Without second battery

Without ski bag

Without special body measures

Without speed limiter

Without speed limiter

Without storage compartment package/box

Without supertone system and tone sequence control

Without trailer hitch



# Assessment

- Vehicle Inspection Report -

Number: 10606329  
From: 13.05.2026

## » Tyres

### MOUNTED TYRES

There are currently one or more wheel sets on/in the vehicle that are not included in the scope of delivery.

Make	Location	Position	Type	Rim	Dimensions	Profile depth
Semperit	Front	Left	Winter	Aluminium	205/60 R 16 92 H	6.0 mm
Semperit	Front	Right	Winter	Aluminium	205/60 R 16 92 H	6.0 mm
Semperit	Rear	Left	Winter	Aluminium	205/60 R 16 92 H	6.0 mm
Semperit	Rear	Right	Winter	Aluminium	205/60 R 16 92 H	6.0 mm

**Permitted:** Yes

**Roadworthy:** Yes

### UNMOUNTED TYRES

Make	Location	Position	Type	Rim	Dimensions	Profile depth
Michelin			Summer	Aluminium	205/55 R 17 91 V	5.0 mm
Michelin			Summer	Aluminium	205/55 R 17 91 V	5.0 mm
Michelin			Summer	Aluminium	205/55 R 17 91 V	5.0 mm
Michelin			Summer	Aluminium	205/55 R 17 91 V	5.0 mm

**Permitted:** Yes

**Roadworthy:** Yes

### SPARE/EMERGENCY TYRE & ACCESSORIES

**Toolkit present:** Yes

**Repair kit present:** Yes

**Repair kit expiration date:** 01.2028

**Compressor present:** Yes



# Assessment

- Vehicle Inspection Report -

Number: 10606329  
From: 13.05.2026

## » Devaluation Factors

Nr	Location	Damage type	Repair type
1	Bumper R	Scratch(es)	Paint
2	Tailgate / Boot	Dent(s) and scratch(es)	Repair and paint (partial)
3	Preparationtime bodywork	Paint preparation	Execute
4	Steering wheel	Scratch(es)	Smart repair LEATHER
5	Roof pillar R	Dent(s)	Spot repair
6	Roof pillar L	Dent(s)	Spot repair
7	Outer sill R	Scratch(es)	Smart repair
8	Roof	Dent(s)	Paintless dent repair
9	Bodywork	Lettering	Remove lettering

## » Usage Damages

The vehicle shows signs of wear consistent with its age, mileage and purpose.



# Assessment

- Vehicle Inspection Report -

Number: 10606329  
From: 13.05.2026

## » Commercial devaluation

<b>Known previous damages:</b>	No
<b>Previous damages detectable:</b>	No
<b>Repainting present:</b>	No
<b>Paint thickness measurement performed:</b>	Yes - no abnormalities/deviations

### **PAINTTHICKNESS MEASUREMENT RESULTS**

The measured values were in the usual range.

At least 3 measurements were carried out per component.



# Assessment

Number: 10606329  
From: 13.05.2026

- Vehicle Inspection Report -

## » Notes On The Assessment

**Details of the assignment and the scope of the assessment:**

The order was placed to prepare a condition report on the described vehicle.

The vehicle condition assessment was carried out in accordance with the order on the basis of the standards for vehicle assessments specified by the client. The expert makes the findings in the individual case on the basis of his own expertise and at his own expert discretion.

**Vehicle identification:**

TMBJG8NX5RY148048

VIN checked and matches documentation

**Vehicle condition:**

Well maintained general condition

**Inspection condition:**

Sufficient

**Lifting platform/lifting equipment used:**

No

**Testdrive carried out:**

No

**Engine test carried out:**

Yes



# Assessment

- Vehicle Inspection Report -

Number: 10606329  
From: 13.05.2026

## » Remarks

This copy was generated electronically. It is valid without an original signature.



# Assessment

- Vehicle Inspection Report -

Number: 10606329  
From: 13.05.2026

## » Commercial Pictures



Front Left 3/4



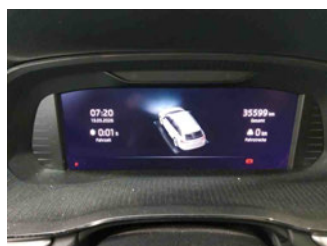
Front Right 3/4



Rear Left 3/4



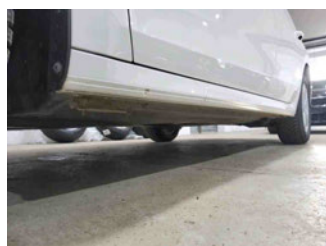
Rear Right 3/4



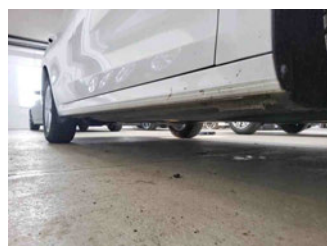
Mileage



Tools



Sill outer L



Sill outer R



Chassis nr



Wheel FL



Wheel FR



Wheel RL



Wheel RR



Additional wheel 1



Additional wheel 2



Additional wheel 3



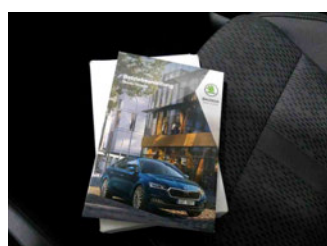
Additional wheel 4



Central console



Engine compartment



Documents



# Assessment

- Vehicle Inspection Report -

Number: 10606329  
From: 13.05.2026



Interior arrangement



History Maintenance



Interior - front



Interior - rear



Tirefit expiration date



GPS/Radio



# Assessment

- Vehicle Inspection Report -

Number: 10606329  
From: 13.05.2026

## » Devaluation Damages

### DEVALUATION FACTORS

1 - Bumper R - Scratch(es) - Paint

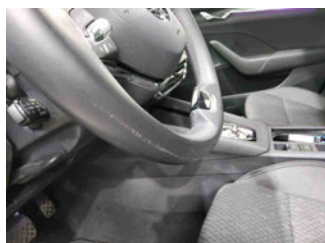


2 - Tailgate / Boot - Dent(s) and scratch(es) - Repair and paint (partial)

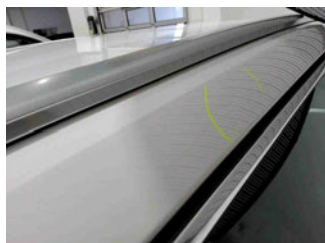
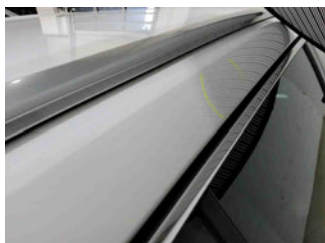


3 - Preparationtime bodywork - Paint preparation - Execute

4 - Steering wheel - Scratch(es) - Smart repair LEATHER



5 - Roof pillar R - Dent(s) - Spot repair





# Assessment

- Vehicle Inspection Report -

Number: 10606329  
From: 13.05.2026

## 6 - Roof pillar L - Dent(s) - Spot repair



## 7 - Outer sill R - Scratch(es) - Smart repair



## 8 - Roof - Dent(s) - Paintless dent repair



## 9 - Bodywork - Lettering - Remove lettering

