

Expertise

Protocol number: 46296196
Order No. / Reference: 26611713
Inspection date: 30 Jun 2026

Manufacturer: Volkswagen

Model: Caddy Cargo 2.0 TDI BMT

VIN: WV1ZZZSK3PX081552



Vehicle details

Manufacturer / Type / Model / Equipment

Volkswagen Caddy Cargo 2.0 TDI BMT

Vehicle Identification number WV1ZZZSK3PX081552

Mileage (Read) 159,875 km

First registration 1 Jun 2023

Number of holders 1

Power / Engine displacement 75 kw / 1,968 ccm

Fuel type / Cylinder Diesel / 4

Gearbox / Number of gears Manual / 6

Type of drive Front drive

Type of vehicle Station wagon

Colour / colour code Candy White (B9A)

Doors / Seats 4 / 2

Upholstery type Cloth

Colour of upholstery Anthracite-Grey



Vehicle details

Maintenance booklet / proof	Non-existent	Next maintenance in	7,800 km
Last service on / at	01/2026 at 149,636 km		
Key is / should be	2 / 2	FZG documents	ZB#2 (B) was available (copy), ZB#1 (S) was not available.
		Letter No.	GS590747
Previous damage / Accident	None detectable	Repainting	None detectable
Inspection conditions	sufficient	Lifting equipment / pit	No
Test drive	Not performed	Engine function test	Performed
Manufacturer key number/ type code number	0603 / CMF 00371		
Emission standard	EURO6;WLTP;AQ;PI/CI; N1 II	fine dust sticker	
Permitted total weight	2,220 kg	Empty weight	

Tyres

Mounted tyres

#	Tyre size	Type of tyre	Manufacturer	Tread depth
1)	205/65 R15 100T	Winter tyres on Steel rim with wheel cover	Kumho	8mm / 8mm
2)	205/65 R15 100T	Winter tyres on Steel rim with wheel cover	Kumho	8mm / 8mm

Replacement

Typ	Tyre size	Type of tyre	Manufacturer	Tread depth
E	205/65 R15 99H	Summer tyres on Steel	Hankook	8 mm

Legend: Tread depth information for the left tire is listed first, for the right tire it is listed second on the axle in the direction of travel.



Equipment

Standard equipment

- Storage compartments: Glove compartment open
- Exterior mirrors: electrically adjustable
- Exterior mirror housings and door handles in black, sliding door track in silver
- Floor coverings: Carpet in the driver's cab
- third brake light
- Roof rail/roof rack preparation
- Three-point automatic seat belts (with front belt height adjustment and electric belt tensioners)
- Omission: Without interior safety mirror
- ESP Electronic Stability Program with Brake Assist (incl. Anti-lock Braking System (ABS), Traction Control (ASR), (EDS and MSR))
- Electric windows, front
- Halogen dual headlights-H7
- Heating and ventilation system in the driver's cab
- Interior lighting in the cargo area (1 light)
- Fuel fill quantity, standard fuel initial fill
- Diesel fuel system
- Steering column adjustable in height and tilt
- Center console with 2 universal cup holders
- Multi-collision brake
- Fatigue detection
- Non-smoking version
- Particulate filter: Diesel particulate filter (incl. SCR and AdBlue tank)
- Wheels/Tires: 205/65 R 15 99 H XL, optimized for low rolling resistance
- Gearshift lever in plastic
- Sliding door, on the right in the passenger/cargo area
- Standard side panels in the cargo area
- Speed-sensitive power steering (Servotronic)
- Seats: Height adjustment for left seat, manual
- Seats: Left and right seats in the 1st row (including headrests)
- Start-stop system (with brake energy recuperation)
- Tire Mobility Set (12-volt compressor and tire sealant)
- First aid kit, warning triangle and high-visibility vest
- Warning tone and light for unfastened front seat belts
- Green thermal insulation glazing
- Additional dust protection seal on the outside
- Airbag for driver and front passenger (with passenger airbag deactivation)
- Reinforced battery (70 Ah/ 420 A)
- Operating voltage 12 V
- Brake booster
- Cockpit panel, matte
- Three-phase generator 140 A
- Electronic parking brake including auto-hold function
- Deletion: Without rear window (sheet metal)
- Omission: Without additional child seat anchorage
- Automatic headlight control with daytime running lights
- Windows: Laminated glass front pane in heat-insulating glazing
- Transmission: 6-speed transmission
- Rear wing door (asymmetrically divided) without window cutout
- Instrument cluster (km/h) (displays for speed, total/trip distance, engine speed, fuel level and time)
- Steering wheel
- Headlight range control
- Multifunction display: 16.51 cm (6.5 inch) color touchscreen for convenient operation (with USB charging port (Type C), no radio function)
- eCall emergency call system
- Upholstery: Fabric, "Double Grid" design
- Wheels, tires: Wheel covers
- Wheels/Tires: Steel wheels 6J x 15, in black
- taillights
- Windscreen wiper intermittent control with light sensor
- Keys for locking system: 2 remote control flip keys
- Side indicator lights
- Seat belt indicator (warning tone and light for unfastened front seat belts)
- Sun visors without mirrors, with ticket pocket on the driver's side, plus airbag label on the sun visor
- Bumper in grey
- Partition wall (tall) without window
- Lashing points: 6 lashing points for securing cargo
- Electronic immobilizer
- Central locking with remote control and interior operation



Extra equipment

- Storage compartments: Glove compartment with lockable, illuminated flap
- Floor coverings, rubber floor covering in the cargo area
- Parking assistance (rear parking distance control)
- Cruise control system including speed limiter
- Paint finish: Solid
- Steering wheel: Multifunction steering wheel
- Navigation system "Discover Media" (25.4 cm (10 inch) touch color display - streaming & internet - 2 USB interfaces (Type C) in the center console, front - glove compartment with lockable, illuminated flap - 4 speakers - mobile phone interface)
- Package: Cool & Sound (Refrigerant R1234yf - Safety interior mirror, automatically dimming - Air Care Climatronic air conditioning with 2-zone temperature control and air purification function)
- Radio accessories: Digital radio reception DAB+
- Wheels/Tires: Spare wheel in driving tire size, steel (spare wheel in driving tire size, steel - on-board tools and jack)
- dimmable interior safety mirror
- Adaptive Cruise Control (ACC) with speed limiter
- Electrically adjustable and heated exterior mirrors
- Parking assistance
- Deletion: Lettering on the rear
- Air conditioning system "Air Care Climatronic" with 2-zone temperature control and air purification function
- Multifunction display "Plus"
- Fog lights including cornering lights
- Emergency braking assistant "Front Assist", evasive steering assist and turning assistant (multifunction camera - multifunction steering wheel - evasive steering assist and turning assistant - auto-dimming rearview mirror - emergency braking assistant "Front Assist" with pedestrian and cyclist detection - cruise control including speed limiter - multifunction display "Plus")
- Package: Winter package (Seat heating for seats in the driver's cab, left and right, separately adjustable - Washer fluid level indicator with enlarged washer fluid reservoir - Heated windshield washer nozzles at the front)
- Partition wall (high) with grilles

Brief expert findings

Documents submitted	At the time of the inspection, the vehicle registration certificate Part 2 (title) was available, but the vehicle registration certificate Part 1 (document) was not. (Copy)
VIN comparison	The vehicle identification number (VIN) was read from the vehicle and its conformity with the submitted documents was confirmed by the undersigned during the inspection.
Inspection	The inspection conditions were sufficient for the assessment of the vehicle. No lifting equipment or pit was available for inspecting the vehicle. Therefore, inspection of the vehicle's underside was only possible to a limited extent.
Test drive	No test drive/shunting maneuver was carried out during the inspection of the vehicle.
Engine function test	An engine test run was performed.

Value reducing factors

No.	Component group	Description
1	Door - front left side	Door edge - Scratch(es) - Smart repair
2	Sliding door, right	Sliding door - Dent / paintcoat damage - Repair and paint
3	Roof	Roof - dent(s) - Repair and paint

Wear and tear

No.	Component group	Description
1	Side panel - rear left side	Side panel - dent(s) - No deduction
2	Vehicle glazing	Windscreen - Stone chips - No deduction
3	Bonnet	Bonnet - Stone chips - No deduction
4	Front bumper	Front bumper - Stone chips - No deduction
5	Side panel - rear right side	Side panel - dent(s) - No deduction
6	Rear bumper	Rear bumper - Scratch(es) - No deduction

The vehicle shows signs of wear and tear commensurate with its age and use.



Order/Scope of Order

An order was placed to prepare a sales report for the described vehicle. This report includes the following:

- Description of key vehicle information
- Documentation of equipment features
(Delivery by third-party service providers)
- Documentation of damage, defects, missing parts
- Documentation of prior damage, unrepaired prior damage, repainting
- A brief visual or functional inspection of the equipment details, if possible.
(Functional testing of driver assistance systems is not included in the scope of services!)
- a photographic documentation of the vehicle

Basis for the order

This product is based on the guidelines for vehicle returns and valuations published by Alphabet Fleet GmbH. The expert makes the specific findings in each individual case objectively, within the framework of the prescribed standards, based on their own expertise.

The vehicle inspection takes place in a fully assembled, unassembled state.

Damage or defects that can only be detected during disassembly/diagnostic work or through further investigation remain within the realm of prognostic risk. An increased risk exists due to concealed defects caused by fraudulent misrepresentation and which were not identifiable by the expert.

Damage or defects resulting from normal use or wear and tear of the vehicle will be accepted in accordance with the applicable standard.

There was no explicit identification or monetary consideration of the expected features within the product.

Features which, in their nature and extent, slightly exceed normal use but do not constitute unacceptable damage, will be documented and indicated as signs of wear, if applicable.

Damage or defects that, according to the applicable standard, can no longer be attributed to normal use or wear and tear are listed under "Value Reducing Factors" in the product description.

Depending on the product specification, a monetary ID can be provided. If this takes place, the costs can be 100% or pro rata depending on the vehicle's age and mileage.

Previous damages

No apparent prior damage that had been repaired could be found on the vehicle.



Figure 1: Diagonal front (left)



Figure 2: Diagonal front (right)



Figure 3: Diagonal rear (left)



Figure 4: Diagonal rear (right)

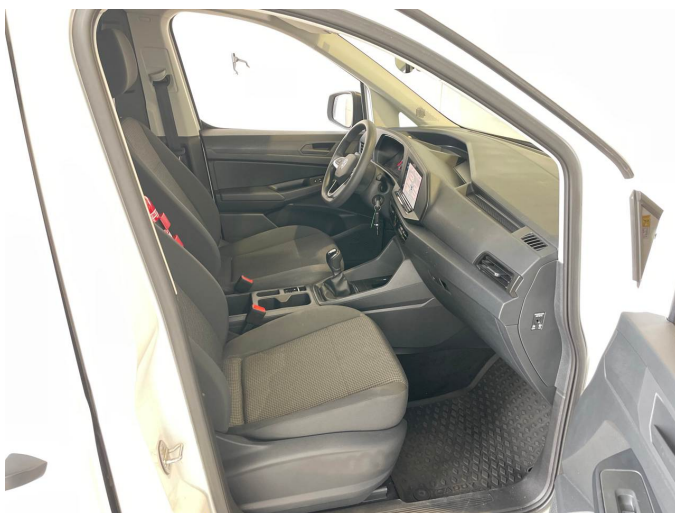


Figure 5: Interior - front



Figure 6: Interior - rear



Figure 7: Instrument cluster



Figure 8: Instrument panel



Figure 9: Interior 360° view



Figure 10: Cargo area



Figure 11: VIN



Figure 12: Mounted tyres

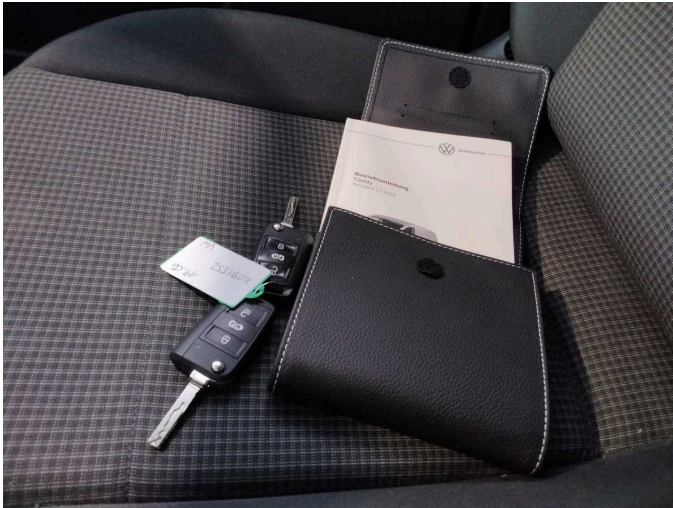


Figure 13: Documents

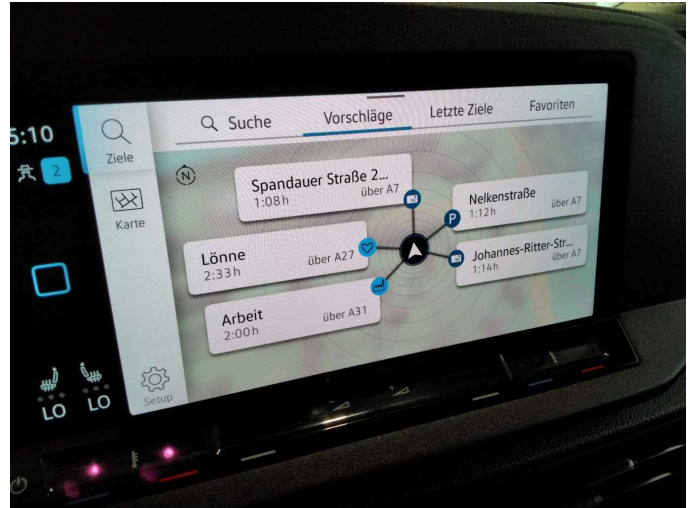


Figure 14: Navigation

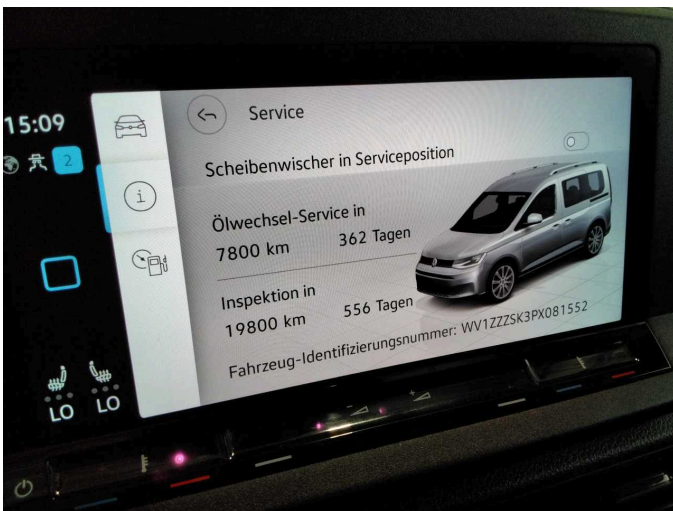


Figure 15: Misc.

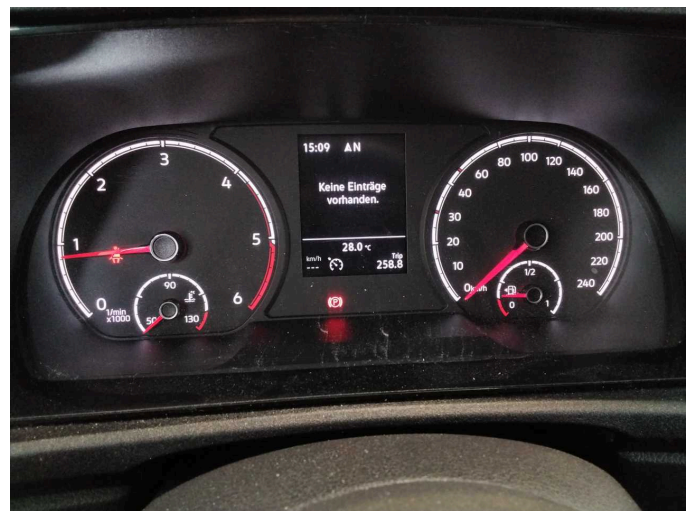


Figure 16: Misc.



Figure 17: Misc.



Figure 18: Misc.



Figure 19: Misc.



Figure 20: Misc.



Figure 21: Misc.



Figure 22: Misc.



Figure 23: Misc.



Figure 24: Misc.



Figure 25: Misc.



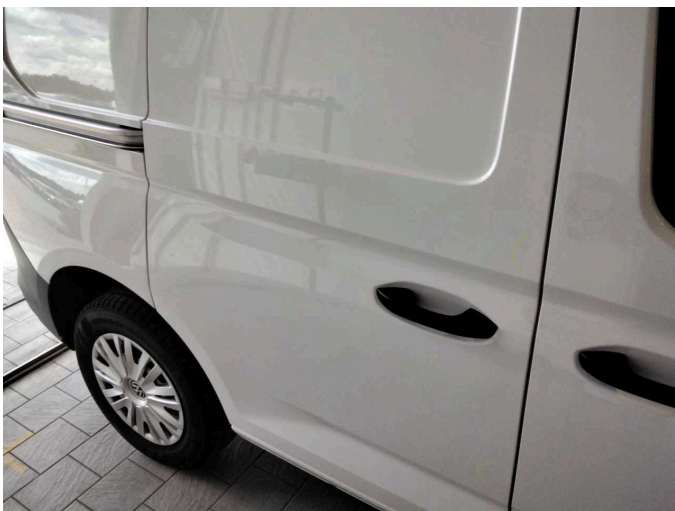
Figure 26: Misc.



Damage 1: Door - front left side: Door edge - Scratch(es) - Smart repair



Damage 1: Door - front left side: Door edge - Scratch(es) - Smart repair



Damage 2: Sliding door, right: Sliding door - Dent / paintcoat damage - Repair and paint



Damage 2: Sliding door, right: Sliding door - Dent / paintcoat damage - Repair and paint



Damage 2: Sliding door, right: Sliding door - Dent / paintcoat damage - Repair and paint



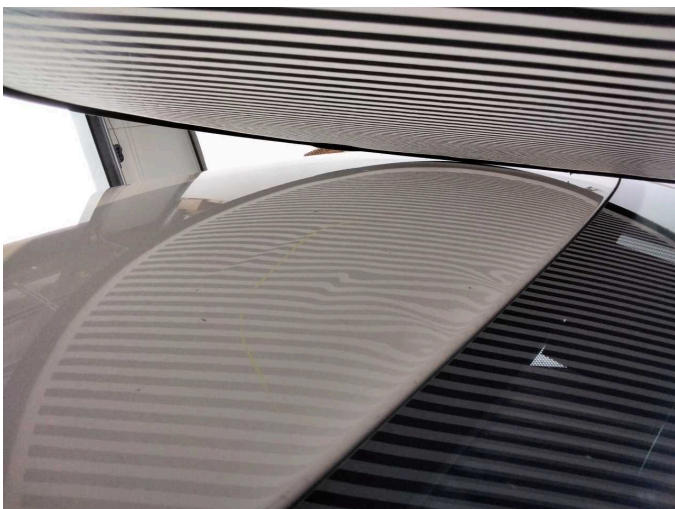
Damage 2: Sliding door, right: Sliding door - Dent / paintcoat damage - Repair and paint



Damage 2: Sliding door, right: Sliding door - Dent / paintcoat damage - Repair and paint



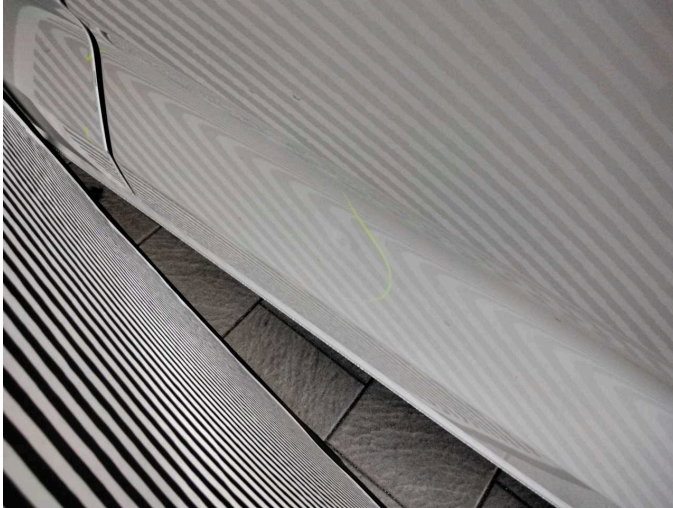
Damage 3: Roof: Roof - dent(s) - Repair and paint



Damage 3: Roof: Roof - dent(s) - Repair and paint



Wear and tear 1: Side panel - rear left side: Side panel - dent(s) - No deduction



Wear and tear 1: Side panel - rear left side: Side panel - dent(s) - No deduction



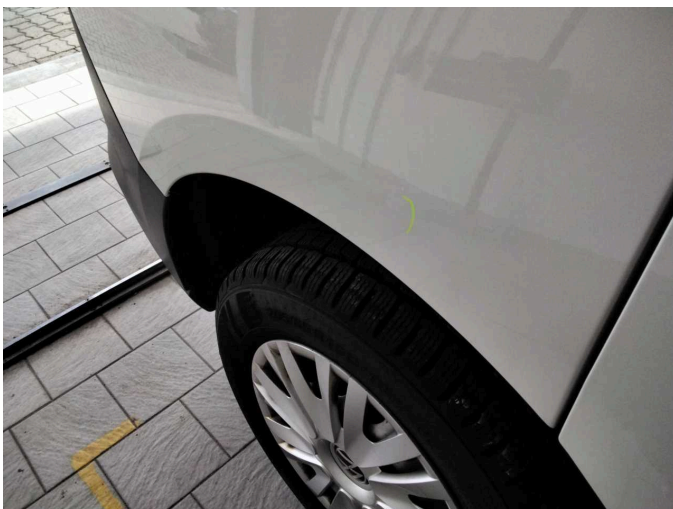
Wear and tear 1: Side panel - rear left side: Side panel - dent(s) - No deduction



Wear and tear 1: Side panel - rear left side: Side panel - dent(s) - No deduction



Wear and tear 2: Vehicle glazing: Windscreen - Stone chips - No deduction



Wear and tear 5: Side panel - rear right side: Side panel - dent(s) - No deduction



Wear and tear 5: Side panel - rear right side: Side panel - dent(s) - No deduction