

Expertise

Protocol number: 45864926
Order No. / Reference: 26494666
Inspection date: 8 Jun 2026

Manufacturer: Skoda

Model: Octavia Combi 2.0 TDI DSG Style

VIN: TMBJJ7NX2NY064856



Vehicle details

Manufacturer / Type / Model / Equipment

Skoda Octavia Combi 2.0 TDI DSG Style

Vehicle Identification number	TMBJJ7NX2NY064856
Mileage (Read)	117,789 km
First registration	16 Feb 2022
Number of holders	1
Next periodical technical inspection (Report on hand)	02/2027

Power / Engine displacement	110 kw / 1,968 ccm
------------------------------------	--------------------

Fuel type / Cylinder	Diesel / 4
-----------------------------	------------

Gearbox / Number of gears	Automatic / 7
----------------------------------	---------------

Type of drive	Front drive
----------------------	-------------

Type of vehicle	Station wagon
------------------------	---------------

Colour / colour code	Moon-Weiß Perleffekt
-----------------------------	----------------------

Doors / Seats	5 / 5
----------------------	-------

Upholstery type	Cloth
------------------------	-------

Colour of upholstery	Black-Dark grey
-----------------------------	-----------------

Re-import	no
------------------	----



Vehicle details

Maintenance booklet / proof	digital proof / complete	Next maintenance in	17,900 km
Last service on / at	01/2026 at 107,509 km		
Key is / should be	2 / 2	FZG documents	ZB#2 (B) was available (copy), ZB#1 (S) was not available.
		Letter No.	GG221996
Previous damage / Accident	Detectable	Repainting	Detectable
Inspection conditions	sufficient	Lifting equipment / pit	yes
Test drive	Not performed	Engine function test	Performed
Manufacturer key number/ type code number	8004 / AWL 00140		
Emission standard	EURO6;WLTP;AP;PI/CI; M, N1 I	fine dust sticker	
Permitted total weight	1,990 kg	Empty weight	

Tyres

Mounted tyres				
#	Tyre size	Type of tyre	Manufacturer	Tread depth
1)	205/55 R17 91V	Summer tyres on Light alloy	Continental	5mm / 5mm
2)	205/55 R17 91V	Summer tyres on Light alloy	Continental	5mm / 5mm
Additional tyres				
#	Tyre size	Type of tyre	Manufacturer	Tread depth
1)	205/60 R16 96H	Winter tyres on Light alloy	Continental	5mm / 5mm
2)	205/60 R16 96H	Winter tyres on Light alloy	Continental	7mm / 7mm

Legend: Tread depth information for the left tire is listed first, for the right tire it is listed second on the axle in the direction of travel.



Equipment

Standard equipment

- Storage compartment in the luggage compartment with cargo element
- Airbag, driver's knee airbag
- Airbag, front side airbags
- Anti-lock braking system (ABS)
- Center section of the dashboard with fabric covering
- Electrically adjustable and heated exterior mirrors
- Electrically folding exterior mirrors
- Hill start assist including auto-hold function
- Hydraulic brake assist (HBA)
- Grey headliner
- Decorative strip in silver finish with ambient lighting
- Digital instrument cluster (Virtual Cockpit) 10.2"
- Third brake light
- Electronic transverse differential lock (XDS+)
- Driving light assistant
- Electric windows front and rear, including anti-pinch protection and child safety lock
- Cruise control system
- Tinted windows
- Heated rear window
- Rear window wiper including windshield washer system
- ISOFIX preparations on the front passenger seat and the outer rear seats including top tether anchorage
- Climatronic air conditioning (2-zone)
- Headrests (5) front and rear height adjustable
- LED taillights in crystal glass look and animated turn signals
- Remote release of the rear seat backrests in the trunk
- Steering wheel: Leather steering wheel with multifunction buttons and paddle shifters.
- Front center armrest, including storage compartment
- Front and rear parking sensors
- Radio: Bolero music system with capacitive 10" color display
- Radio accessories: Bluetooth hands-free system
- Radio accessories: SmartLink
- Rain sensor
- Tire mobility kit
- Electromechanical power steering
- Safety lights in the front side doors
- Seats: Electrically adjustable front seats with memory function
- SKODA Care Connect
- Lane keeping assistant (Lane Assist)
- Telephone: Phonebox with inductive charging function (connection via external antenna)
- Immobiliser
- Storage compartments
- Airbag, driver and passenger
- Airbag, head airbags
- Ambient lighting
- Traction control (ASR)
- Automatically dimming exterior mirror (driver's side)
- Exterior mirrors with memory function
- Heated windshield washer nozzles including 5l washer fluid reservoir
- Glasses compartment in the headliner
- Roof rails, anodized
- Diesel particulate filter
- Tachometer
- Electronic parking brake
- Electronic Stability Control (ESC)
- Driving profile selection
- Front radar assistant including city emergency braking function and pedestrian and cyclist detection
- Transmission: 7-speed dual-clutch transmission (DSG)
- Green tec: Start/stop system including brake energy recuperation
- Interior mirror automatically dimming
- Kessy, keyless entry and start-stop system
- Child safety lock for the rear doors and windows
- Removable boot cover
- LED fog lights
- LED license plate lights
- LED headlights with LED daytime running lights
- Steering wheel: height and reach adjustable
- Manual headlight range adjustment
- Rear center armrest with pass-through option
- Engine drag torque control (MSR)
- Upholstery: Cloth
- Radio accessories: 2 USB-C ports on the front
- Radio accessories: 8 speakers
- Radio accessories: Digital radio reception DAB+
- Radio accessories: Voice control
- Tire pressure monitoring
- Wheels: 17" Rotare AERO alloy wheels
- Seat belts
- Seats: Heated front seats
- Seats: Height-adjustable driver and passenger seats
- Seats: Rear seat backrest split 60:40, foldable
- Speed limiter
- 12V socket in the trunk
- Phone: Wireless SmartLink for Apple CarPlay
- Lashing eyes in the trunk
- Central locking including remote control integrated into the key and EASY Start



Extra equipment

- Swiveling trailer hitch including trailer stabilization and adapter
- Luggage net partition
- Dog safety harness
- Package: Columbus infotainment package (Style, RS, Scout)
 (Columbus navigation system - Infotainment Online (3-year term) - 3 USB charging ports)
- Package: Travel (DSG) WA1
- Heated windscreen
- Anti-theft alarm system including safe system with interior monitoring and tilt sensor
- Rear protection strip
- Paint finish: Pearl effect
- Package: Comfort (Style) (3-zone Climatronic - Sunset (dark tinted rear window and rear side windows) - acoustic glazing in the front side windows - heated front and outer rear seats - heated steering wheel)

Brief expert findings

Documents submitted	At the time of the inspection, the vehicle registration certificate Part 2 (title) was available, but the vehicle registration certificate Part 1 (document) was not. (Copy)
VIN comparison	The vehicle identification number (VIN) was read from the vehicle and its conformity with the submitted documents was confirmed by the undersigned during the inspection.
Inspection	The inspection conditions were sufficient for the assessment of the vehicle. Lifting equipment and/or a pit were available for examining the vehicle.
Test drive	No test drive/shunting maneuver was carried out during the inspection of the vehicle.
Engine function test	An engine test run was performed.

Value reducing factors

No.	Component group	Description
1	Trim / covers	Floor mats - Scratched - Replace
2	Equipment	Tirefit filler - Expired - Replace
3	Documents	Owner's manual - Broken / torn - Replace
4	Misc.	Misc. (Hundeschutzgurt) - Missing - Replace
5	Side panel - rear left side	Side panel - dent(s) - Smooth repair work
6	Wheel / tyres	Alloy rim - front right side - Scratched - Loss in value
7	Wheel / tyres	Alloy rim - front left side - Scratch(es) - Loss in value
8	Front bumper	Front bumper - Scratch(es) - Smart repair
9	Electrical system	Battery - Empty - Replace
10	Rear bumper	Rear bumper (Lackläufer) - Unprofessionally repaired - Paint
11	Vehicle glazing	Windscreen - Broken / torn - Replace

Wear and tear

No.	Component group	Description
1	Engine	Engine cowling lower front - Scratched - No deduction

The vehicle shows signs of wear and tear commensurate with its age and use.

Missing parts

Description

Equipment - Umbrella



Previous damages

No.	Previous damage	Extent of damage (Net)
1	Rear, Provided by user / customer, from 12 Jul 2023	1.148,62 €
2	Front, Provided by user / customer, from 24 Feb 2025	1.648,32 €
3	Rear, Provided by user / customer, from 9 Sept 2024	2.960,03 €

Repainting

No.	Repainting
1	Bumper rear, Unprofessionally carried out, Invoice of repair done Non-existent

Order/Scope of Order

An order was placed to prepare a sales report for the described vehicle. This report includes the following:

- Description of key vehicle information
- Documentation of equipment features
(*Delivery by third-party service providers*)
- Documentation of damage, defects, missing parts
- Documentation of prior damage, unrepaired prior damage, repainting
- A brief visual or functional inspection of the equipment details, if possible.
(*Functional testing of driver assistance systems is not included in the scope of services!*)
- a photographic documentation of the vehicle

Basis for the order

This product is based on the guidelines for vehicle returns and valuations published by Alphabet Fleet GmbH. The expert makes the specific findings in each individual case objectively, within the framework of the prescribed standards, based on their own expertise.

The vehicle inspection takes place in a fully assembled, unassembled state.

Damage or defects that can only be detected during disassembly/diagnostic work or through further investigation remain within the realm of prognostic risk. An increased risk exists due to concealed defects caused by fraudulent misrepresentation and which were not identifiable by the expert.

Damage or defects resulting from normal use or wear and tear of the vehicle will be accepted in accordance with the applicable standard.

There was no explicit identification or monetary consideration of the expected features within the product.

Features which, in their nature and extent, slightly exceed normal use but do not constitute unacceptable damage, will be documented and indicated as signs of wear, if applicable.

Damage or defects that, according to the applicable standard, can no longer be attributed to normal use or wear and tear are listed under "Value Reducing Factors" in the product description.

Depending on the product specification, a monetary ID can be provided. If this takes place, the costs can be 100% d or pro rata depending on the vehicle's age and mileage.

Previous damages

According to available information previous damages were repaired at the vehicle. Traces of repairs, which allow conclusions about the area of repair, were not recognizable during the inspection.

Comments

- Der Winterradsatz ist kein Bestandteil der Ausstattungsliste.



Figure 1: Diagonal front (left)



Figure 2: Diagonal front (right)



Figure 3: Diagonal rear (left)



Figure 4: Diagonal rear (right)

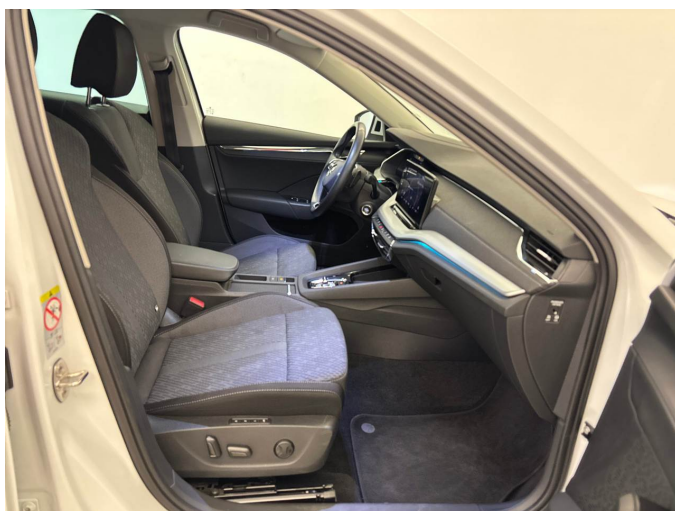


Figure 5: Interior - front



Figure 6: Interior - rear



Figure 7: Instrument cluster



Figure 8: Instrument panel



Figure 9: Interior 360° view



Figure 10: Cargo area



Figure 11: VIN



Figure 12: Mounted tyres



Figure 13: Documents



Figure 14: Documents



Figure 15: Additional tyres

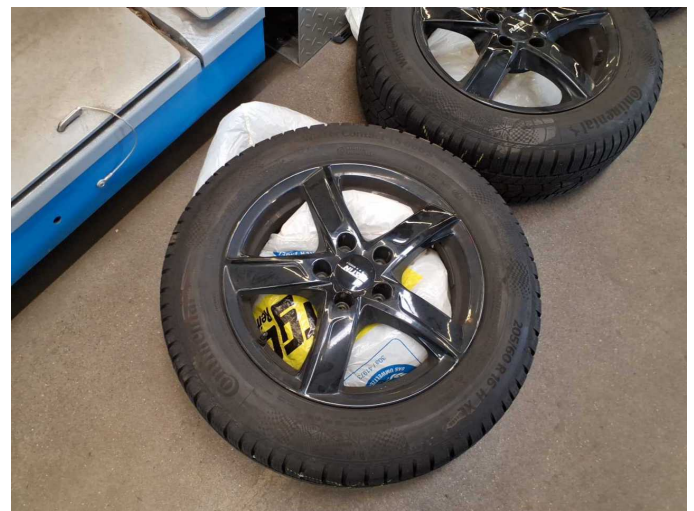


Figure 16: Additional tyres



Figure 17: Navigation



Figure 18: Misc.



Figure 19: Misc.



Figure 20: Misc.

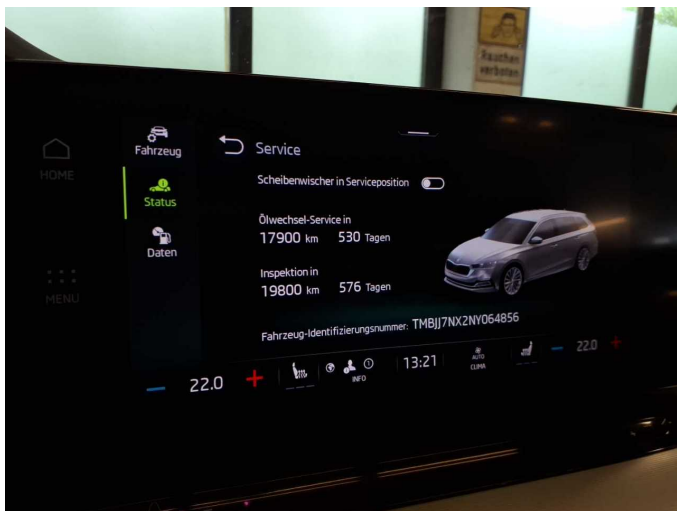


Figure 21: Misc.



Figure 22: Misc.



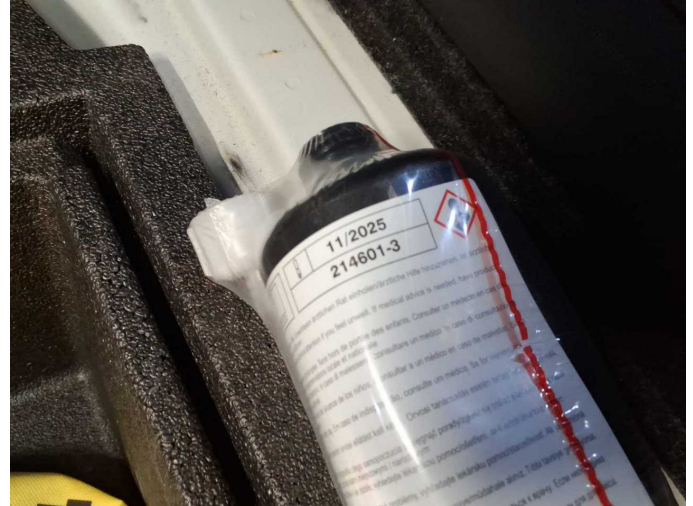
Figure 23: Misc.



Damage 1: Trim / covers: Floor mats - Scratched - Replace



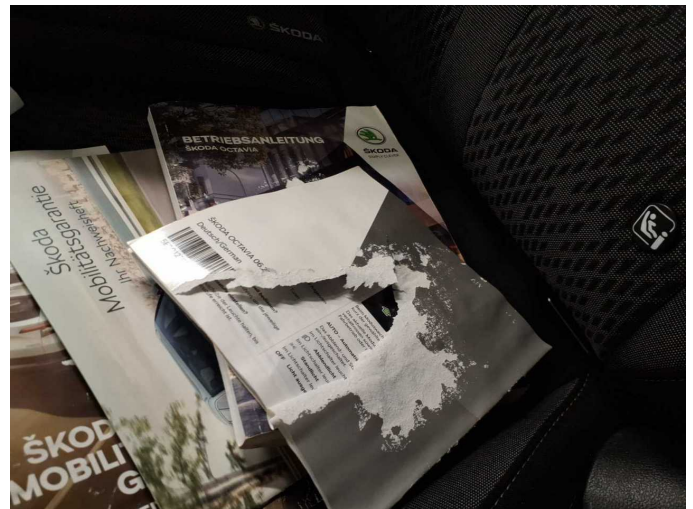
Damage 1: Trim / covers: Floor mats - Scratched - Replace



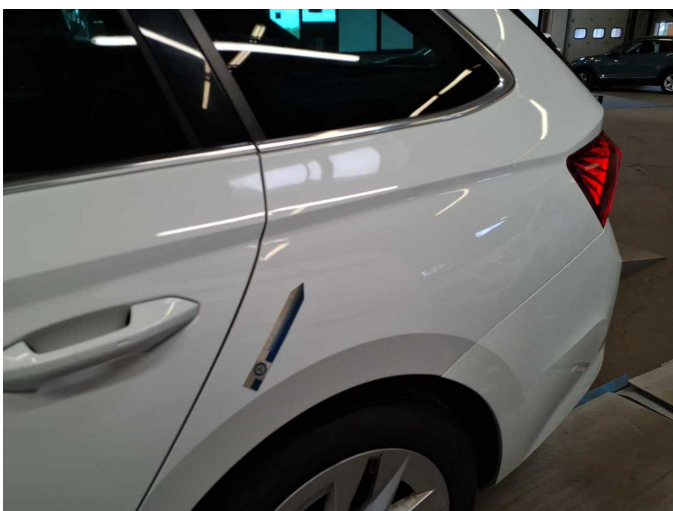
Damage 2: Equipment: Tirefit filler - Expired - Replace



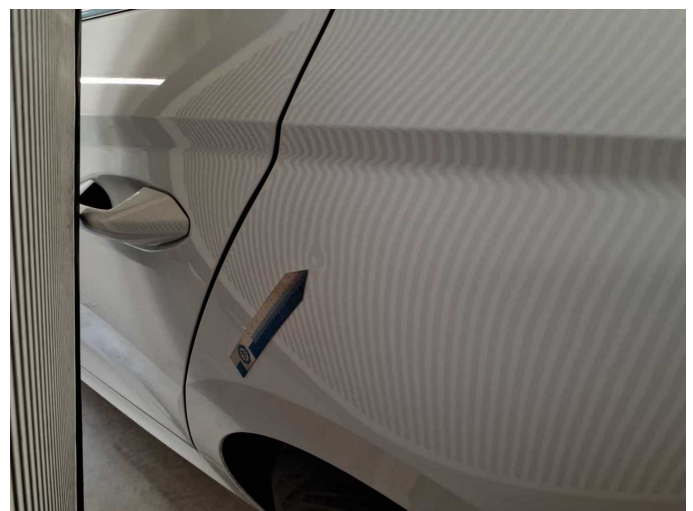
Damage 3: Documents: Owner's manual - Broken / torn - Replace



Damage 3: Documents: Owner's manual - Broken / torn - Replace



Damage 5: Side panel - rear left side: Side panel - dent(s) - Smooth repair work



Damage 5: Side panel - rear left side: Side panel - dent(s) - Smooth repair work



Damage 6: Wheel / tyres: Alloy rim - front right side - Scratched - Loss in value



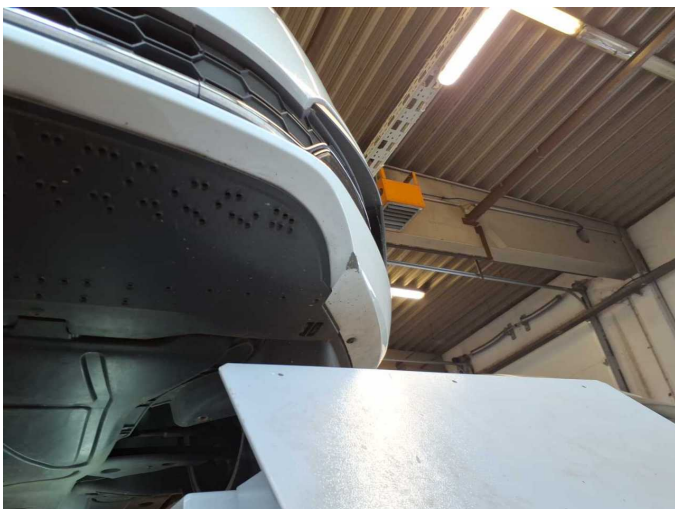
Damage 6: Wheel / tyres: Alloy rim - front right side - Scratched - Loss in value



Damage 7: Wheel / tyres: Alloy rim - front left side - Scratch(es) - Loss in value



Damage 7: Wheel / tyres: Alloy rim - front left side - Scratch(es) - Loss in value



Damage 8: Front bumper: Front bumper - Scratch(es) - Smart repair



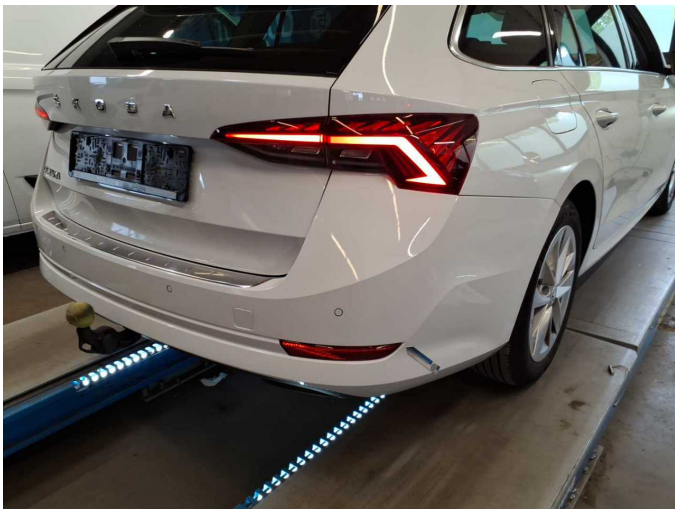
Damage 8: Front bumper: Front bumper - Scratch(es) - Smart repair



Damage 8: Front bumper: Front bumper - Scratch(es) - Smart repair



Damage 8: Front bumper: Front bumper - Scratch(es) - Smart repair



Damage 10: Rear bumper: Rear bumper (Lackläufer) - Unprofessionally repaired - Paint



Damage 10: Rear bumper: Rear bumper (Lackläufer) - Unprofessionally repaired - Paint



Damage 10: Rear bumper: Rear bumper (Lackläufer) - Unprofessionally repaired - Paint



Damage 10: Rear bumper: Rear bumper (Lackläufer) - Unprofessionally repaired - Paint



Damage 11: Vehicle glazing: Windscreen - Broken / torn - Replace



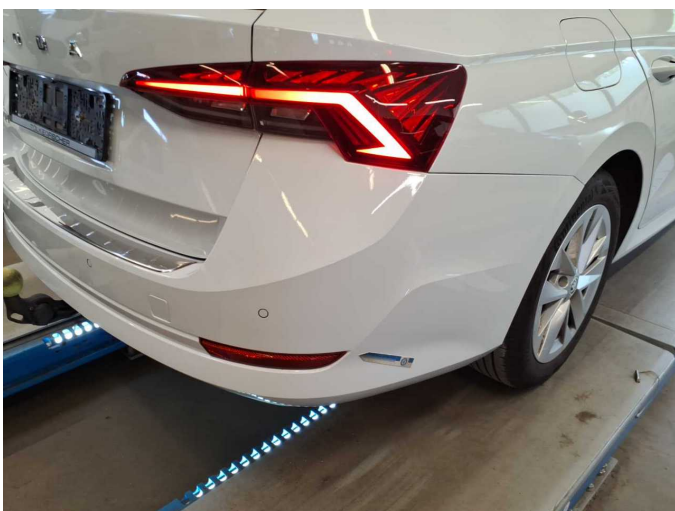
Damage 11: Vehicle glazing: Windscreen - Broken / torn - Replace



Missing part 1: Equipment: Umbrella - Missing - Replace



Missing part 1: Equipment: Umbrella - Missing - Replace



Repainting 1: Bumper rear



Repainting 1: Bumper rear



Repainting 1: Bumper rear



Repainting 1: Bumper rear



Wartungshistorie

(gemäß Auftraggeber Informationen)

Fahrgestellnummer: TMBJJ7NX2NY064856
Hersteller / Modell: SKODA SKODA Octavia Combi 2.0 TDI DSG Style

Datum	KM-Stand	Beschreibung
05.02.2026	109.501	Bremse Sonstiges; Bremsklötze vorne; Bremsscheiben vorne
05.01.2026	107.509	Kraftstofffilter ern; Luftfiltereinsatz ern; Motoröl b. Wartung; Ölfilter ern; Regelwartungsdienst; Systemtest/Eigendiagnose; Wartung Sonstiges
15.09.2025	99.462	Systemtest/Eigendiagnose
07.02.2025	81.161	AU; Bremsflüssigkeit; Bremsflüssigkeit ern; Motoröl b. Wartung; Ölfilter ern; Regelwartungsdienst; Wartung Sonstiges
10.01.2024	46.871	Motoröl b. Wartung; Ölfilter ern; Ölwechsel; Wartung Sonstiges
16.06.2023	32.144	Bremse Sonstiges; Bremsklötze hinten; Bremsklötze vorne; Regelwartungsdienst; Wartung Sonstiges
24.01.2023	23.088	Motoröl b. Wartung; Ölfilter ern; Ölwechsel; Wartung Sonstiges