

Expertise

Protocol number: 45815482
Order No. / Reference: 26350118-1
Inspection date: 29 May 2026

Manufacturer: Mercedes-Benz

Model: GLE 350 de 4Matic 9G-TRONIC AMG Line

VIN: W1NFB1HB7PA854819



Vehicle details

Manufacturer / Type / Model / Equipment

Mercedes-Benz GLE 350 de 4Matic 9G-TRONIC AMG Line

Vehicle Identification number W1NFB1HB7PA854819

Mileage (Read) 54,878 km

First registration 29 Dec 2022

Number of holders 1

Power / Engine displacement 143 kw / 1,950 ccm

Fuel type / Cylinder Hybr.D/E ext.auf1 / 4

Gearbox / Number of gears Automatic / 9

Type of drive All-wheel drive

Type of vehicle SUV

Colour / colour code SCHWARZ - UNILACK

Doors / Seats 5 / 5

Upholstery type Artificial leather

Colour of upholstery Black



Vehicle details

Maintenance booklet / proof	Non-existent	Next maintenance in	-122 Tag(e)
Key is / should be	2 / 2	FZG documents	ZB#2 (B) was available (copy), ZB#1 (S) was not available.
		Letter No.	GM997881
Previous damage / Accident	Detectable	Repainting	Detectable
Inspection conditions	sufficient	Lifting equipment / pit	yes
Test drive	Not performed	Engine function test	Performed
Manufacturer key number/ type code number	2222 / AQC 00445		
Emission standard	EURO6;WLTP;AP;PI/CI; M, N1 I	fine dust sticker	
Permitted total weight	3,260 kg	Empty weight	

Tyres

Mounted tyres

#	Tyre size	Type of tyre	Manufacturer	Tread depth
1)	275/50 R20 113V	Winter tyres on Light alloy	Michelin	7mm / 7mm
2)	275/50 R20 113V	Winter tyres on Light alloy	Michelin	6mm / 6mm

Additional tyres

#	Tyre size	Type of tyre	Manufacturer	Tread depth
1)	275/50 R20 113W	Summer tyres on Light alloy	Continental	5mm / 5mm
2)	275/50 R20 113W	Summer tyres on Light alloy	Continental	6mm / 6mm

Legend: Tread depth information for the left tire is listed first, for the right tire it is listed second on the axle in the direction of travel.

TÜV SÜD Auto Partner GmbH
Wiesenring 2
04159 Leipzig

Inspection location
Hartmann Fleet Professionals GmbH
Leerenstraße 25
29683 Bad Fallingbommel



Equipment



Standard equipment

- Exhaust system with 2 chrome-plated tailpipe trims
- Adaptive Highbeam Assist
- Adaptive brake light (flashing)
- Airbag: Kneebag for driver
- Airbag: Windowbags
- Active Brake Assist
- Acoustic environmental protection (To ensure that your vehicle does not become a danger to pedestrians and cyclists even when driving purely electrically and almost silently, the acoustic environmental protection generates a Mercedes-Benz specific sound outside the vehicle up to a speed of 30 km/h.)
- Anti-lock braking system
- Traction control (ASR)
- Foldable armrest for driver and front passenger (with storage compartment)
- ATTENTION ASSIST (can detect typical signs of fatigue through driver behavior and warn the driver of increasing fatigue or inattentiveness)
- Roof rails in aluminum look
- Diesel particulate filter
- Tachometer
- Third brake light
- EASY-Pack tailgate with electric operation for opening and closing
- ECO start/stop function
- Electronic Stability Program (ESP)
- Electronic traction system for all-wheel drive (4ETS)
- Electric windows, front and rear
- electric parking brake
- Speed Limit Assistant (camera behind the windshield - uses image recognition to determine the maximum permissible speed of the currently driven route based on the corresponding signage - if there are no signs, additional information such as the lane width can be used to determine the maximum permissible speed - display of speed limits including restrictive additional signs in the instrument cluster and in the optionally available display)
- KEYLESS-GO start function
- Communication module (LTE) for using Mercedes me connect services (The communication module (LTE) offers you a clear increase in comfort and safety. It constantly connects the vehicle to the internet – so that you can use helpful services such as the Live Traffic Information from Mercedes me connect. Two mobile antennas and an LTE-enabled SIM card ensure a fast connection.)
- Charging cable for wallbox and public charging stations, 5m, smooth (This charging cable, also called Mode 3 cable, allows you to charge the vehicle battery at the wallbox or at public charging stations with up to 11 kW (Type 2, 3-phase, 16 A.)
- ADAPTIVE BRAKE (with HOLD function - including hill start assist and drying brakes in wet conditions)
- Airbag: Driver and passenger side
- Airbag: Sidebag for driver and front passenger (combined thorax/pelvisbag)
- Active Lane Keeping Assist
- 4MATIC permanent all-wheel drive
- Ambient lighting (ambient lighting in 64 colors - all colors can be selected individually - brightness of the lighting zones can be selected from 0 to 100% frei - nine color schemes with different color combinations - Dynamic mode: atmospheric color change through slow, continuous transition between different colors - Climate effect: color feedback when the temperature setting is changed - Welcome effect: special lighting when entering the vehicle)
- Rear armrest (foldable)
- Automatic passenger airbag deactivation
- Electrically adjustable and heated exterior mirrors
- Brake Assist BAS (with brake force support during detected emergency braking)
- Downhill Speed Regulation (DSR) (Speed setting between 2 and 18 km/h via the cruise control - switch for turning it on and off in the center console - display in the multimedia display)
- EASY-Pack cargo cover (removable)
- Front door sills with "Mercedes-Benz" lettering illuminated in white
- Chassis with steel springs and lowered suspension (steel springs with passive damping system)
- Velour floor mats (in interior color)
- Transmission: 9G-TRONIC (9-speed automatic transmission - DIRECT SELECT selector lever - DIRECT SELECT steering wheel shift paddles - DYNAMIC Select)
- Lockable, air-conditioned and illuminated glove compartment
- Heated rear window (with timer)
- Rear window wiper with intermittent function (and automatic activation when reversing)
- Mechanical child safety locks in the rear doors (and electric locks for the rear window regulators)
- Headrests adjustable in 5 positions (height and tilt)
- Radiator grille with 2 chrome-plated louvers in SUV design
- Paint finish: Solid
- Charging cable for household socket, 5m, smooth (This charging cable, also called Mode 2 cable, allows you to charge the vehicle battery at the household socket with up to 1.8 kW (230 V, 1-phase, 8 A) and fits sockets of type E/F CEE 7/7.)
- Charging system: AC on-board charger 7.4 kW



- Steering wheel: Multifunction sports steering wheel in Nappa leather (The multifunction sports steering wheel in Nappa leather with black control panels will delight you with every glance and every touch. The soft Nappa leather is of exquisite quality. The steering wheel thus conveys a passion for high-quality automotive details at all times.)
- Steering column mechanically adjustable lengthwise and heightwise.
- Mercedes-Benz emergency call system
- Navigation accessories: Pre-installation for navigation services (Wherever you go, you're always well-informed. Your vehicle answers your questions about your journey and you can find out current fuel prices at your destination, the number of available parking spaces, or the current weather. This makes trip planning even easier.)
- Package: Chrome (window line trim strip, front and rear underride protection, chrome-plated beltline trim strip)
- Package: Parking package with reversing camera (Active Parking Assist with PARKTRONIC)
- Package: Public Charging (Includes charging cable for wallbox and public charging stations, 5m, smooth and Remote and Charging Services Plus)
- Package: Mirror package (both exterior mirrors electrically folding (button in the driver's door control panel) - automatic lowering of the passenger-side mirror glass to the parking position when reverse gear is engaged - interior mirror and driver's side exterior mirror automatically dimming - ambient lighting in both exterior mirrors: with projection of the brand logo to illuminate the entry area)
- Tire pressure monitoring system (TPMS)
- Windscreen wipers with rain sensor
- Power steering
- 3-point safety belts (including mechanical belt height adjustment and belt force limiter for driver and front passenger as well as automatic belt height adjustment in the rear outer seats)
- Seats: 4-way lumbar support for driver and front passenger
- Seats: Heated seats for driver and front passenger seats
- Seats: Front seats electrically adjustable
- Cruise control with variable speed limiter
- High-visibility vest for drivers
- Immobiliser
- Widescreen Cockpit (instrument display and media display as an optical unit under a continuous cover glass - display cluster consisting of two fully digital color displays in flatscreen look with a screen diagonal of 12.3 inches each and a resolution of 1920 x 720 pixels - touchscreen version for the media display - display styles: "Classic", "Sport", "Progressive" and "Discreet")
- LED High Performance Headlights (Signal light with trifunctional torch for daytime running light, position light and turn indicator in LED light guide technology with thick-walled optics; high beam in LED reflection technology; low beam in LED projection technology; the elements of the rear lights in LED technology: all light functions in full LED technology; tail light; brake light and parking light; rear fog light (only on the left side); turn indicator in the white light strip; reversing light in the white light strip)
- Navigation accessories: Extended MBUX functions (personalization (profiles) and prediction functions - LINGUATRONIC with natural language understanding - activation via "Hey Mercedes" - Wi-Fi hotspot - internet radio)
- Navigation: Hard drive navigation (Mercedes-Benz look and feel of the navigation system, all map data stored on the hard drive - fast hard drive navigation - destination input via touch function or voice control - route calculation including waypoints - numerous route options and avoidance options - 3D image of the upcoming driving maneuver and lane recommendation - easy switching between 2D and 3D views - compass - route recording function (prerequisite: a USB device is connected to the multimedia system))
- Upholstery: Leatherette ARTICO/Microfiber DINAM
- PRE-SAFE system (with reversible belt tensioners for driver and front passenger seats and closing function for side windows)
- Radio accessories: Digital radio (DAB)
- Radio accessories: Additional USB ports
- Remote Services Plus (The Remote Services Plus package transforms mobility into a new experience, offering greater comfort and safety. Status queries provide information about the remaining range. You can remotely control certain functions and locate your vehicle. Services such as maintenance management coordinate service appointments, saving you valuable time.)
- Seats: Comfort seats
- Seats: Rear seat backrests foldable (40/20/40 split ratio)
- Phone accessories: Smartphone integration (Android Auto and Apple CarPlay). Smartphone integration merges the mobile phone with the media system via Apple CarPlay and Android Auto.
- Heat-insulating glass, all around
- Central locking with interior switch (including automatic locking (can be deactivated) and crash sensor with emergency opening)
- Decorative elements: Brushed aluminum with light longitudinal grain



Extra equipment

- Trailer maneuvering assistant (assistance system - articulation angle sensor in the ball head of the trailer hitch - rotating magnetic ring on the ball head)
- Steering wheel: Steering wheel heating
- Package: AIRMATIC package (air suspension system with adaptive damping system ADS+ - automatic level control, depending on - payload: load detection for a constant chassis level - driving speed: lowering for higher driving speeds - DYNAMIC SELECT driving program: lowering in the "Sport"/"Sport plus" program or raising in the "Offroad"/"Offroad plus" program - demand-based level control: - rear lowering for loading and unloading - individual selection of the chassis level)
- Package: Night (Diamond grille with chrome pins and high-gloss black louvre; AMG light-alloy wheels in 5-twin-spoke design, high-gloss black lacquer and gloss black, with front axle 275/50 R 20 on 9.0 x 20 ET 57, rear axle 275/50 R 20 on 9.0 x 20 ET 44; AMG front windscreen in A-wing design with high-gloss black trim strip; AMG rear windscreen with high-gloss black diffuser and high-gloss black trim strip; air intakes in radiator grille and front windscreen; roof rails in matte black; heat-insulating dark-tinted glass from the B-pillar; exterior mirror housings in high-gloss black; window trim and beltline trim in black)
- Radio accessories: Burmester surround sound system (with 13 speakers and 590 watts system power. Experience enhanced performance and exclusivity with legendary Burmester sound. The high-performance speakers create a first-class surround sound experience. This can be specifically optimized for the front and rear seats, intensifying the listening experience. A quality that is also visible thanks to the high-quality Burmester logos.)
- Wheels: 50.8 cm (20") AMG light-alloy wheels in 5-twin-spoke design (tremolite grey painted and high-sheen finish with front axle 275/50 R 20 on 9.0 J x 20 ET 57, rear axle 275/50 R 20 on 9.0 J x 20 ET 44)
- Telephone: Multifunctional telephony (wireless connection of a compatible mobile phone to the external antenna - wireless charging for compatible mobile phones - Bluetooth and WLAN pairing wirelessly via NFC (Near Field Communication) technology)
- Heat-insulating dark tinted glass
- Towbar with ESP trailer stabilization
- Black fabric headliner
- Climate: THERMOTRONIC automatic climate control (4-zone automatic climate control: enables individually adjustable climate control for the driver and front passenger sides as well as for the left and right sides in the rear - Sensors for detecting, e.g., interior/ exterior temperature, solar radiation, humidity and for checking air quality - Fine dust activated carbon filter for filtering dust, soot and pollen as well as for reducing pollutants and odors - Residual heat function for efficient use of engine waste heat (activated via residual heat button))
- Package: AMG Line Exterior (diamond grille with chrome pins, integrated Mercedes star and one louvre painted in matte iridium silver with chrome inserts - AMG Styling: AMG front apron with chrome trim strip, sporty and distinctive air intakes in the wheel arch trims, fender flares front and rear in body paint, AMG side sill trims, AMG rear apron with diffuser-look insert in black and chrome trim strip - AMG light-alloy wheels in 5-twin-spoke design, painted tremolite grey and polished with front axle 275/50 R 20 on 9 J x 20 ET 57, rear axle 275/50 R 20 on 9 J x 20 ET 44)
- Package: Parking Package with 360° camera (12 sensors: four front, four rear, two on the sides in the front/rear bumper; detects parking spaces up to 35 km/h; steering control; in conjunction with automatic transmission, assists with acceleration, braking, and gear changes; 360° camera; visual/audible warning of detected obstacles in front of/ behind the vehicle up to approx. 10 km/h; Rear Cross Traffic Alert warns of detected cross traffic; Drive Away Assist (only in conjunction with automatic transmission); button on the center console or on the control panel for the assistance systems)
- Sunroof: Panoramic sunroof (large glass module made of heat-insulating, tinted safety glass - mesh wind deflector in the front area - electric sunshade with one-touch operation - comprehensive protection concept: - anti-pinch protection - automatic rain closing - PRE-SAFE closing function (only in conjunction with PRE-SAFE system))
- Partition net for luggage compartment separation and occupant protection

Brief expert findings

Documents submitted	At the time of the inspection, the vehicle registration certificate Part 2 (title) was available, but the vehicle registration certificate Part 1 (document) was not. (Copy)
VIN comparison	The vehicle identification number (VIN) was read from the vehicle and its conformity with the submitted documents was confirmed by the undersigned during the inspection.
Inspection	The inspection conditions were sufficient for the assessment of the vehicle. Lifting equipment and/or a pit were available for examining the vehicle.
Test drive	No test drive/shunting maneuver was carried out during the inspection of the vehicle.
Engine function test	An engine test run was performed.



Value reducing factors

No.	Component group	Description
1	Side panel - rear left side	Side panel - dent(s) - Smooth repair work
2	Misc.	Inspection / maintenance - Due - Perform
3	Bonnet	Bonnet (Schleifspuren) - Unprofessionally repaired - Paint

Wear and tear

No.	Component group	Description
1	Rear bumper	Rear bumper - Scratch(es) - No deduction
2	Boot lid / rear door	Boot lid - dent(s) - No deduction

The vehicle shows signs of wear and tear commensurate with its age and use.

Previous damages

No.	Previous damage	Extent of damage (Net)
1	Front, Provided by user / customer, from 15 May 2025	3.521,76 €
2	Rear, Provided by user / customer, from 12 Apr 2024	5.609,98 €
3	Front, Provided by user / customer, from 8 Nov 2024	8.115,09 €

Accident damages

No.	Accident
1	Side right

Repainting

No.	Repainting
1	Bonnet, Unprofessionally carried out, Invoice of repair done Non-existent

Paint coat thickness measurement

Bonnet	308 µm
--------	--------

Order/Scope of Order

An order was placed to prepare a sales report for the described vehicle. This report includes the following:

- Description of key vehicle information
- Documentation of equipment features
(*Delivery by third-party service providers*)
- Documentation of damage, defects, missing parts
- Documentation of prior damage, unrepaired prior damage, repainting
- A brief visual or functional inspection of the equipment details, if possible.
(*Functional testing of driver assistance systems is not included in the scope of services!*)
- a photographic documentation of the vehicle



Basis for the order

This product is based on the guidelines for vehicle returns and valuations published by Alphabet Fleet GmbH. The expert makes the specific findings in each individual case objectively, within the framework of the prescribed standards, based on their own expertise.

The vehicle inspection takes place in a fully assembled, unassembled state.

Damage or defects that can only be detected during disassembly/diagnostic work or through further investigation remain within the realm of prognostic risk. An increased risk exists due to concealed defects caused by fraudulent misrepresentation and which were not identifiable by the expert.

Damage or defects resulting from normal use or wear and tear of the vehicle will be accepted in accordance with the applicable standard.

There was no explicit identification or monetary consideration of the expected features within the product.

Features which, in their nature and extent, slightly exceed normal use but do not constitute unacceptable damage, will be documented and indicated as signs of wear, if applicable.

Damage or defects that, according to the applicable standard, can no longer be attributed to normal use or wear and tear are listed under "Value Reducing Factors" in the product description.

Depending on the product specification, a monetary ID can be provided. If this takes place, the costs can be 100% d or pro rata depending on the vehicle's age and mileage.

Previous damages

Non-repaired previous damages were found at the vehicle. The necessary repair costs are listed in the expert report or if necessary, are listed in detail in a separately enclosed repair cost calculation.

Comments

Der montierte Winterradsatz ist kein Bestandteil der Ausstattung.



Figure 1: Diagonal front (left)



Figure 2: Diagonal front (right)



Figure 3: Diagonal rear (left)



Figure 4: Diagonal rear (right)



Figure 5: Interior - front

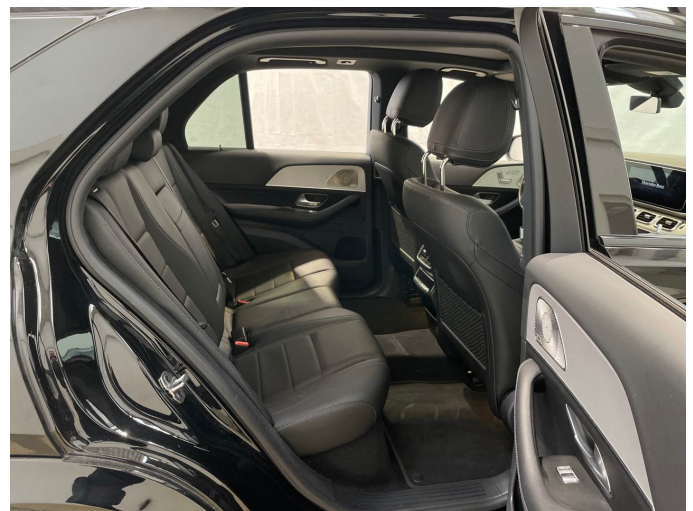


Figure 6: Interior - rear



Figure 7: Instrument cluster



Figure 8: Instrument panel



Figure 9: Interior 360° view



Figure 10: Cargo area



Figure 11: VIN



Figure 12: Mounted tyres



Figure 13: Documents



Figure 14: Documents

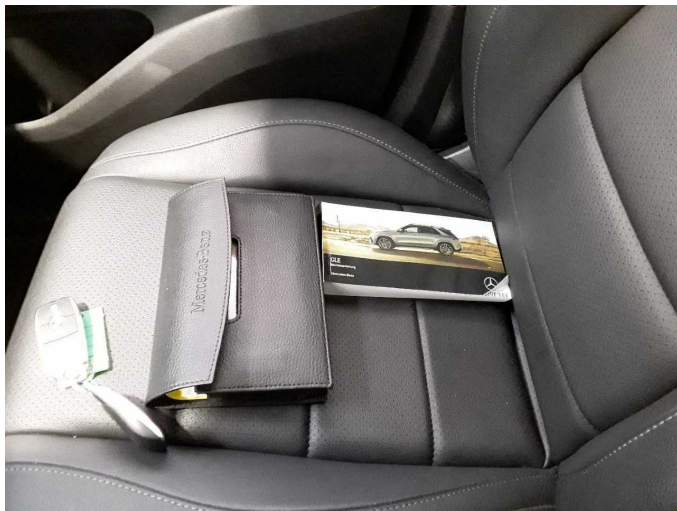


Figure 15: Documents



Figure 16: Additional tyres



Figure 17: Navigation

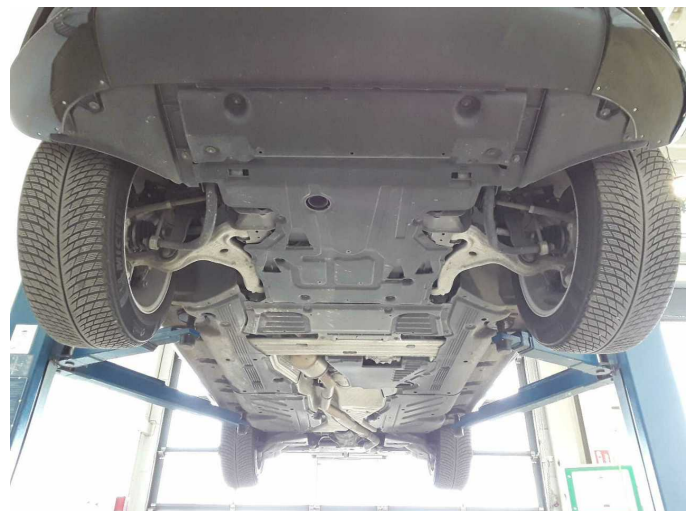


Figure 18: Misc.



Figure 19: Misc.



Figure 20: Misc.



Figure 21: Misc.



Figure 22: Misc.



Figure 23: Misc.



Figure 24: Misc.



Figure 25: Misc.



Figure 26: Misc.



Figure 27: Misc.



Figure 28: Misc.



Figure 29: Misc.



Damage 1: Side panel - rear left side: Side panel - dent(s) - Smooth repair work



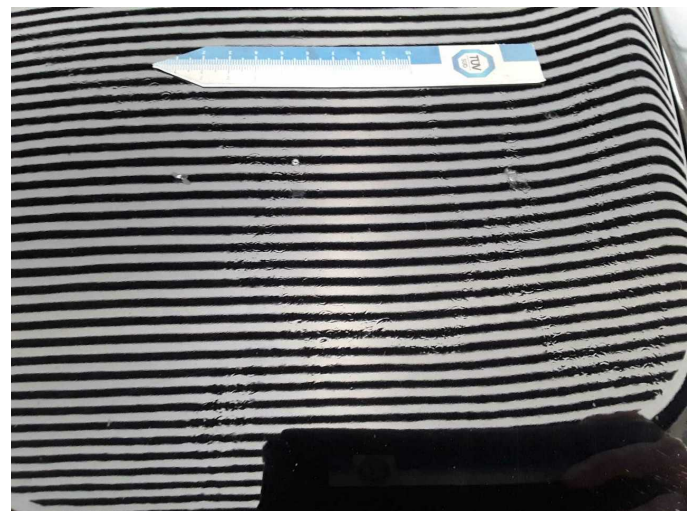
Damage 1: Side panel - rear left side: Side panel - dent(s) - Smooth repair work



Damage 2: Misc.: Inspection / maintenance - Due - Perform



Damage 3: Bonnet: Bonnet (Schleifspuren) - Unprofessionally repaired - Paint



Damage 3: Bonnet: Bonnet (Schleifspuren) - Unprofessionally repaired - Paint



Damage 3: Bonnet: Bonnet (Schleifspuren) - Unprofessionally repaired - Paint



Accident 1: Side right



Accident 1: Side right



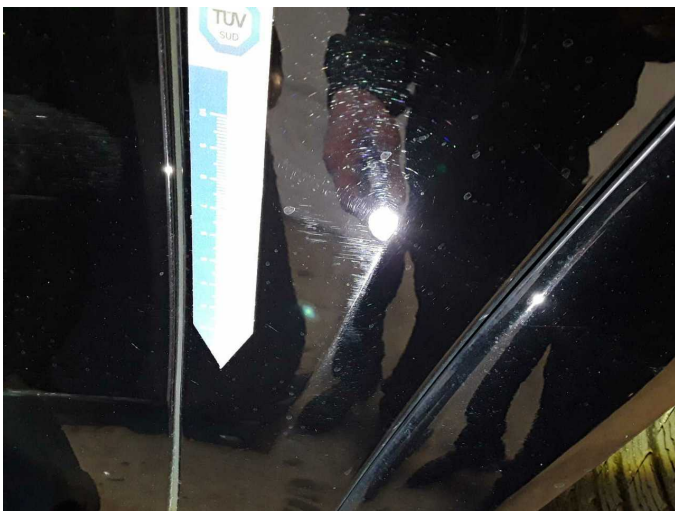
Accident 1: Side right



Accident 1: Side right



Accident 1: Side right



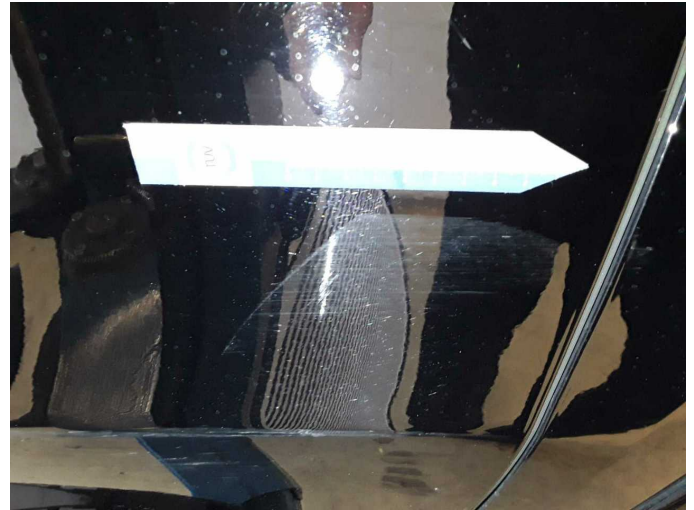
Accident 1: Side right



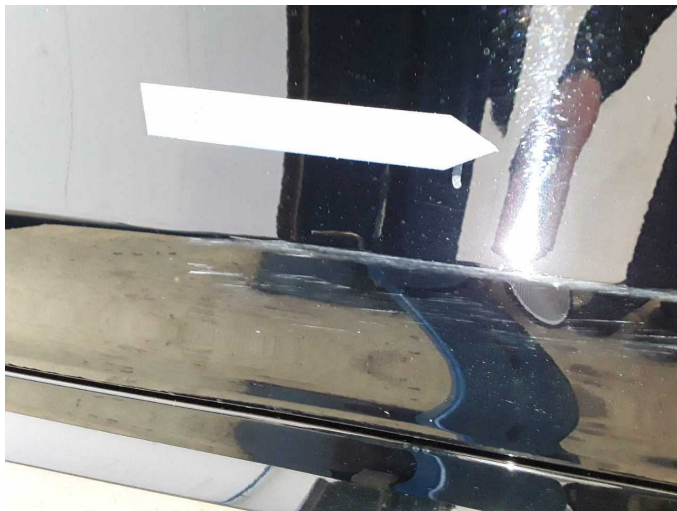
Accident 1: Side right



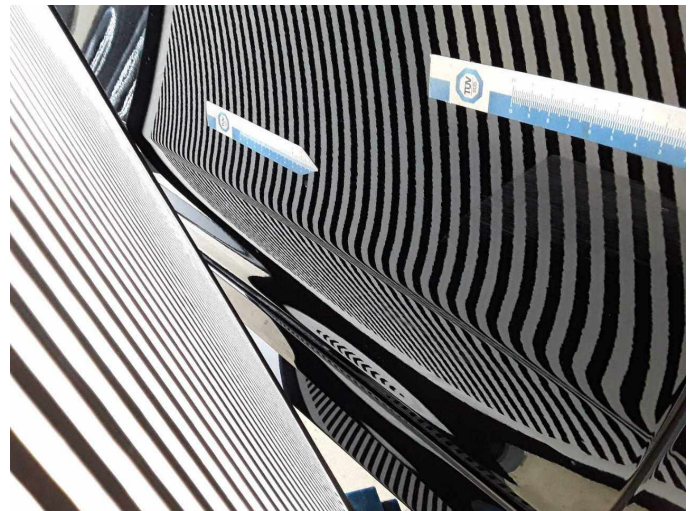
Accident 1: Side right



Accident 1: Side right



Accident 1: Side right



Accident 1: Side right



Repainting 1: Bonnet



Repainting 1: Bonnet