

Expertise

Protocol number: 46208328
Order No. / Reference: 26596920
Inspection date: 25 Jun 2026

Manufacturer: Mercedes-Benz

Model: GLS 450 d 4Matic 9G-TRONIC AMG Line Advanced Plus

VIN: W1NFF3DE8RB040661



Vehicle details

Manufacturer / Type / Model / Equipment

Mercedes-Benz GLS 450 d 4Matic 9G-TRONIC AMG Line Advanced Plus

Vehicle Identification number W1NFF3DE8RB040661

Mileage (Read) 80,372 km

First registration 8 Dec 2023

Number of holders 1

Power / Engine displacement 270 kw / 2,989 ccm

Fuel type / Cylinder Hybrid Diesel / E / 6

Gearbox / Number of gears Automatic / 9

Type of drive All-wheel drive

Type of vehicle SUV

Colour / colour code OBSIDIANSCHWARZ - METALLICLACK

Doors / Seats 5 / 7

Upholstery type Leather

Colour of upholstery Black



Vehicle details

Maintenance booklet / proof	digital evidence / incomplete	Next maintenance in	-2,135 Tag(e)
Last service on / at	05/2025 at 52,411 km		
Key is / should be	1 / 2	FZG documents	ZB#2 (B) was available (copy), ZB#1 (S) was not available.
		Letter No.	GY545208
Previous damage / Accident	None detectable	Repainting	Detectable
Inspection conditions	sufficient	Lifting equipment / pit	yes
Test drive	Not performed	Engine function test	Performed
Manufacturer key number/ type code number	2222 / BNX 00052		
Emission standard	EURO6;WLTP;AP;PI/CI; M, N1 I	fine dust sticker	
Permitted total weight	3,420 kg	Empty weight	

Tyres

Mounted tyres

#	Tyre size	Type of tyre	Manufacturer	Tread depth
1)	285/45 R22 114V	Winter tyres on Light alloy	Pirelli	4mm / 2mm
2)	285/45 R22 114V	Winter tyres on Light alloy	Pirelli	4mm / 4mm

Legend: Tread depth information for the left tire is listed first, for the right tire it is listed second on the axle in the direction of travel.

TÜV SÜD Auto Partner GmbH
Wiesenring 2
04159 Leipzig

Inspection location
Hartmann Fleet Professionals GmbH
Leerenstraße 25
29683 Bad Fallingbommel



Equipment



Standard equipment

- Adaptive Highbeam Assist Plus (automatic highbeam control for continuous wide illumination of the road - partial deactivation of the LEDs of the highbeam modules to avoid dazzling vehicles ahead or approaching - active from a speed of 30 km/h on roads without street lighting)
- Airbag: Windowbags
- Active Traffic Jam Assist
- Ambient lighting (ambient lighting in 64 colors - nine color worlds with different color combinations - dynamic mode: atmospheric color change through slow, stepless transitions between different colors - climate effect: color feedback when changing the temperature setting - welcome effect: special lighting design when entering the vehicle - front door sills illuminated with Mercedes-Benz lettering in white - additional interior lighting in white)
- Third brake light
- EASY-Pack: Cargo area cover
- Intrusion and theft alarm system with pre-installation for collision detection
- Electronic Stability Program (ESP) (including Anti-lock Braking System (ABS) and Traction Control System (ASR))
- Vehicle key in high-gloss black with decorative frame in high-gloss chrome
- GUARD 360° vehicle protection (anti-theft alarm system - tow-away protection with visual and audible warning in case of detected change in position - audible alarm - interior monitoring (triggers upon movement inside the vehicle) - collision detection - GUARD 360° label on the front side windows)
- Climate: THERMOTRONIC automatic climate control (4-zone automatic climate control: enables individually adjustable climate control for the driver and front passenger sides as well as for the left and right sides in the rear - Sensors for detecting, e.g., interior/ exterior temperature, solar radiation, humidity and for checking air quality - Fine dust activated carbon filter for filtering dust, soot and pollen as well as for reducing pollutants and odors - Residual heat function for efficient use of engine waste heat (activated via residual heat button))
- Fuel tank with a capacity of 90 liters
- Mercedes-Benz emergency call system
- MULTIBEAM LED (84 individually controllable high-performance LEDs per headlight - Low beam and high beam in LED projection technology - Adaptive Highbeam Assist Plus - ULTRA RANGE high beam - Active cornering light with predictive control - Extended fog light, cornering light, country road light, city light, bad weather light and motorway light - Cornering light with roundabout and intersection function - Adaptive full-LED taillights - Off-road light)
- Navigation accessories: Extended MBUX functions (personalization (profiles) and predictive functions - MBUX voice assistant with natural language understanding - activation via "Hey Mercedes" - learning function of the MBUX voice assistant by connecting to a cloud-based online dictionary - Wi-Fi hotspot - internet radio)
- Airbag: Driver and passenger side
- Airbag: Kneebag for driver
- Airbag: Sidebag for driver and front passenger (combined thorax/ pelvisbag)
- Airbag: Side airbags in the rear
- Active Brake Assist
- 4MATIC all-wheel drive
- AMG floor mats
- ATTENTION ASSIST (can detect typical signs of fatigue via steering behavior and can warn the driver of impending microsleep)
- Automatic passenger airbag deactivation
- Roof rails in chrome look
- Diesel particulate filter
- Double sun visor
- EASY-PACK tailgate (electrically opening and closing tailgate - switch for electrically opening the tailgate in the driver's door - switch for electrically closing the tailgate at the bottom edge of the tailgate - manual cargo cover for covering the cargo area)
- Chassis with adaptive damping system
- Electric windows, front and rear
- Transmission: 9G-TRONIC
- Rear window heated
- rear window wiper
- Interior headliner fabric crystal grey
- Interior mirror automatically dimming
- Instrument panel upper section in ARTICO man-made leather
- Communication module (LTE) for using Mercedes me connect services (The communication module with a vehicle-integrated, LTE-enabled SIM card offers you added comfort and safety. It continuously connects you to your vehicle – and the vehicle to the infrastructure such as the Mercedes-Benz server or the internet. This allows you to use services such as Live Traffic Information* from Mercedes me connect.)
- Headrests (2)
- Rear headrests (5)
- Steering wheel: Multifunction sports steering wheel in Nappa leather (sporty steering wheel in a 3-twin-spoke design, flattened at the bottom - finished in Nappa leather, deeply embossed in the grip area - horizontal double spokes in high-gloss black, vertical double spokes in silver chrome - shift paddles in silver chrome - control via touch panels: including: instrument cluster, Active Distance Assist DISTRONIC; right: multimedia system (e.g., audio volume and track selection, telephony and navigation); touch sensitivity adjustable via central display)
- Navigation accessories: 7 years of free map updates



- Navigation accessories: Pre-installation for Live Traffic Information (Live Traffic Information receives more precise and up-to-date traffic data in real time than conventional systems and optimizes dynamic route guidance. Whether during rush hour or while traveling: You can react to many situations and easily bypass traffic jams and stop-and-go traffic.)
- Navigation: MBUX Navigation Premium (With MBUX Navigation Premium, you reach your destination quickly and with all the information you need. You can rely on up-to-date map data including satellite view, precise real-time traffic information, and fast online route guidance. Intelligently networked functions also make your journey safer.)
- Package: AIRMATIC package (air suspension system with adaptive damping system ADS+ - automatic level control, depending on - payload: load detection for a constant chassis level - driving speed: lowering for higher driving speeds - DYNAMIC SELECT driving program: lowering in the "Sport"/"Sport plus" program or raising in the "Offroad"/"Offroad plus" program - demand-based level control: - rear lowering for loading and unloading - individual selection of the chassis level)
- Package: Chrome Interior Package (chrome-plated controls and trim strip in the door interior in silver chrome - EASY-ENTRY switch in silver chrome - controls to the left of the steering wheel in silver chrome - hand-held controls, switches and cupholders of the center console finished or framed in silver chrome - climate control strip in silver chrome)
- Package: KEYLESS-GO Comfort Package (vehicle key with KEYLESS-GO functionality - KEYLESS-GO access and drive authorization system - start/stop button - comfort opening and closing - door handles with chrome inlay - HANDS-FREE ACCESS - remote trunk lid closing - EASY-PACK luggage compartment lid)
- Package: Parking package with 360° camera (12 ultrasonic sensors: six each in the front and rear bumpers - Active Parking Assist - 360° camera - PARKTRONIC parking assist - Cross traffic warning can provide visual and audible warnings when reversing out of a parking space and, if necessary, automatically initiate emergency braking - Immobilizer can briefly limit the approach speed - Button for Active Parking Assist including PARKTRONIC on the center console)
- Upholstery: Rough leather/Leather
- Radio accessories: 2 USB ports in the rear
- Radio accessories: Burmester surround sound system (13 high-performance speakers, 9-channel DSP amplifier with a total output of 590 watts (7 x 50 watts and 2 x 120 watts), front bass technology with woofers integrated into the body shell, noise cancellation (VNC), sound personalization, sound preset: surround function to generate virtual surround sound, sound optimization for the front and rear seats, supports multi-channel formats for true surround sound, 2-way in-car communication, pre-installation for MBUX Entertainment).
- Navigation accessories: MBUX Augmented Reality for Navigation (To help you find your way in complex traffic situations, MBUX Augmented Reality for Navigation connects the virtual world with the real one. The technology overlays graphical navigation and traffic information onto live images. You reach your destination quickly, safely and stress-free.)
- Navigation accessories: Pre-installation for navigation services (display of online content on the navigation map - parking spaces - weather information - local search - digital logbook)
- Navigation: Hard drive navigation (Mercedes-Benz look and feel of the navigation system, all map data stored on the hard drive - fast hard drive navigation - destination input via touch function or voice control - route calculation including waypoints - numerous route options and avoidance options - 3D image of the upcoming driving maneuver and lane recommendation - easy switching between 2D and 3D views - compass - route recording function (prerequisite: a USB device is connected to the multimedia system))
- Package: AMG Line Advanced Plus (20U Pre-installation for digital key handover - 293 Sidebags in the rear - 34U Remote Services Premium - 513 Traffic Sign Assist - 628 Adaptive Highbeam Assist Plus - 642 MULTIBEAM LED - 840 Heat-insulating dark tinted glass - 883 Power closing - B51 TIREFIT - P20 Driving Assistance Package - P31 AMG Line - P54 GUARD 360° vehicle protection - PDB Advanced Plus Package - U28 Brake system with larger brake discs on the front axle)
- Package: Driving Assistance Package (Active Distance Assist DISTRONIC - Active Speed Limit Assist - Extended Automatic Restart on Motorways - Route-Based Speed Adaptation - Active Steering Assist - Active Emergency Stop Assist with SOS Function - Active Brake Assist - Turning Function with Vehicle, Pedestrian and Bicycle Detection - Evasive Steering Assist - Active Lane Keeping Assist - Blind Spot Assist - Exit Warning Function - Traffic Sign Assist)
- Package: Memory Package (driver and front passenger seats, steering column and exterior mirrors electrically adjustable and storable - seat longitudinal position and headrest height additionally electrically adjustable - 4-way lumbar support for driver and front passenger - seat cushion depth adjustment with gapless cushion - ENERGIZING seat kinematics - PRE-SAFE positioning function for the front passenger seat - front passenger seat controls for driver - height of the head-up display electrically adjustable (only in conjunction with head-up display))
- Package: Mirror package (Exterior mirrors electrically fold in and out via a button in the driver's door control panel - the menu allows you to set the exterior mirrors to fold in automatically when locking the vehicle and unfold again when unlocking - the exterior mirror on the driver's side and the interior mirror dim automatically and continuously depending on the incident glare and ambient light)
- Radio accessories: Digital radio



- Radio accessories: Pre-installation for digital radio (The pre-installation expands your personal options. This allows you to opt for a digital radio even after purchasing and taking delivery of the vehicle. It's simple: you activate the software-based on-demand feature yourself. This also increases the resale value if a potential buyer specifically requests a digital radio.)
- Tire pressure monitoring system (TPMS)
- Wheels: 53.3 cm (21") AMG light-alloy wheels in 5-twin-spoke design (aerodynamically optimized, painted in glossy titanium grey and polished with front axle 275/45 R 21 on 10 J x 21 ET 44, rear axle 315/40 R 21 on 11 J x 21 ET 42)
- Wheel accessories: TIREFIT with tire inflator compressor
- Sunroof (heat-insulating safety glass - wind deflector - illuminated multi-function switch - sliding headliner element - pinch protection)
- Power steering
- Seat belts: Rear seat belt indicator in the instrument cluster
- Seats: 5+2 seater
- Seats: i-Size child seat attachment in the rear
- Seats: Seat climate control for driver and front passenger seats (seat heating and ventilation)
- Telediagnosics (The Digital Extra Telediagnosics feature informs you when wear parts, such as brake pads, need to be replaced. This information is also automatically transmitted to your Mercedes-Benz service partner, who will contact you to schedule a service appointment. So you can enjoy a worry-free journey.)
- Phone accessories: Smartphone integration (Smartphone integration connects your mobile phone wirelessly to the multimedia system via Apple CarPlay and Android Auto. This gives you convenient access to your smartphone's most important applications. You can also use third-party apps such as Spotify quickly and easily.)
- Accident and Breakdown Management (Fast help in case of an emergency: with Mercedes me Accident and Breakdown Management. Using the Mercedes me button or the phone book entry in your address book, your Mercedes-Benz establishes a voice connection with the Customer Assistance Center. When the service is activated, relevant vehicle data and your location are transmitted, so that either our trained staff can assist you directly on the phone or the nearest Mercedes-Benz Service Partner can provide further assistance.)
- Pre-installation for digital key handover (Share your vehicle key even without personal handover - Decide to whom you open the vehicle and hand over the key - Use the functions conveniently in the Mercedes me app)
- Immobiliser
- Widescreen Cockpit (instrument display and media display as an optical unit under a continuous cover glass - display cluster consisting of two fully digital color displays in flatscreen look with a screen diagonal of 12.3 inches each and a resolution of 1920 x 720 pixels - touchscreen version for the media display - display styles: "Classic", "Sport", "Progressive" and "Discreet")
- Radio accessories: Sound personalization (A tailor-made listening experience: Personalizing the sound system makes it easy to achieve your perfect sound setup. A setup assistant with an innovative algorithm works with you to determine your music preferences and adjusts the Burmester® sound system to your wishes. The result is saved in a personal profile.)
- Radio accessories: Pre-installation for MBUX Entertainment (integration of music streaming services (user account required): Spotify, Amazon Music, TIDAL, TuneIn (no user account required) - Internet Radio (809) - Third-party comfort data volume)
- Radio accessories: Additional USB ports
- Remote Services Premium (Communication module - Assistance in case of vehicle theft - Mercedes me services: Remote query of vehicle status, programming of auxiliary heating/ventilation, remote locking and unlocking of doors, remote closing and opening of sunroof/windows including ventilation function, personalization of vehicle location, vehicle tracking, geographic vehicle monitoring, parking service monitoring, finder function (Remote Vehicle Finder), notification when exceeding the driving speed, Send2Car function)
- Soft-close doors
- Seats: 3rd row (third row for two additional full-size seats (up to 1.94 m height) - EASY-ENTRY system - retractable rear headrests for the third row - safety belts with pyrotechnic retraction and linear force limiter for the third row - i-Size child seat attachment for attaching two i-Size or ISOFIX child seats)
- Telephone accessories: Wireless charging system for mobile devices (wireless charging according to Qi standard for compatible mobile phones - fast connection setup between multimedia system and mobile phone via Near Field Communication (NFC) for identification of the mobile device - storage compartment for wireless charging is located in the storage compartment at the front of the center console)
- Transparent hood (Maneuver with confidence and safely navigate around obstacles – even on rough terrain: This feature makes the hood transparent for you during off-road driving. A virtual view, calculated from camera images, shows the area directly in front of your Mercedes. Additionally, a visualization of the driving path helps you choose the optimal route.)
- Traffic Sign Assist (networked system consisting of a camera behind the windshield and navigation maps - display of speed limits, prohibitions and their cancellation in the instrument display or media display as well as in the optionally available head-up display - visual and, if desired, additional acoustic warning when exceeding the permitted maximum speed, whereby the tolerance threshold can be raised to up to 10 km/h - can recognize no-entry signs, providing a visual and acoustic warning)
- Maintenance Management (Experience how easy maintaining your Mercedes-Benz can be. The Digital Extra Maintenance Management reminds you of upcoming maintenance and assists you with booking appointments. When the service is activated, relevant vehicle data is also transmitted to your Mercedes-Benz Service Partner in advance to make the maintenance appointment as efficient as possible.)
- Heat-insulating dark tinted glass



- Decorative elements: Linden wood, line structure, glossy brown

Extra equipment

- Anhängerrangier-Assistent (Der Anhängerrangier-Assistent ist nur im Stillstand und nur bis zu einer Steigung von maximal 15 % aktivierbar. Die Geschwindigkeit im Anhängerrangier-Modus ist auf 7 km/h limitiert. Der Knickwinkelschutz ist nur bei assistiertem Rückwärtsfahren aktiv.)
- Head-up display
- Black fabric headliner
- Instrument panel and door sills in ARTICO man-made leather
- Climate: THERMOTRONIC automatic climate control in the rear (with 5 climate zones)
- Steering wheel: Steering wheel heating
- Package: AMG Line Premium Plus (AIR-BALANCE Package (fragrance generator with filled fragrance bottle, ionizer, improved filter system), ENERGIZING Package (warmth, joy, comfort, freshness, vitality), head-up display, panoramic sliding sunroof, MBUX Interior Assistant, multi-contour seats for driver and front passenger with massage function, seat climate control, ambient lighting with animated projection of the Mercedes-Benz pattern, temperature-controlled cupholder, THERMOTRONIC automatic climate control in the rear, heat comfort package (heated seats plus front/rear, heated armrests))
- Panoramic sliding sunroof (large glass module made of heat-insulating, tinted safety glass - mesh wind deflector in the front area - electric sunshade with one-touch operation - comprehensive protection concept: - anti-pinch protection - automatic rain closing - PRE-SAFE closing function)
- Wheels: 55.9 cm (22") AMG multi-spoke light-alloy wheels (gloss black painted and polished with front axle 285/45 R 22 on 9.5 J x 22 ET 45, rear axle 325/40 R 22 on 11.5 J x 22 ET 47)
- Telephone: Multifunctional telephony (wireless connection of a compatible mobile phone to the external antenna - Bluetooth and WLAN pairing wirelessly via NFC (Near Field Communication) technology)
- Partition net for luggage compartment separation and occupant protection
- Illuminated running boards in aluminum look with rubber studs
- Towbar with ESP trailer stabilization (fully electrically foldable and retractable)
- GUARD 360° Vehicle Protection Plus (Anti-theft alarm system - Towing protection with visual and audible warning in case of detected change in position - Audible alarm - Interior monitoring (triggers upon movement inside the vehicle) - Assistance with vehicle theft (theft assistance), free of charge for 3 years from activation - Emergency key deactivation, free of charge for 3 years from activation - GUARD 360° label on the front side windows)
- Paint finish: MANUFAKTUR Metallic
- Paint finish: Metallic
- MAGIC VISION CONTROL (highly efficient windscreen wiper system consisting of control unit, position sensor, electric pump and distribution rail - heating for wiper blades, washer fluid reservoir and washer fluid hoses - automatic interval switching with rain sensor - practical tap wash function)
- Package: Rear Comfort Package Plus (extended comfort center armrest: -removable MBUX rear tablet with 7-inch screen diagonal and camera function, docking station in high-gloss black for storage and charging -integrated illuminated storage compartment -2 USB interfaces -wireless charging for mobile phones in the rear; extended center console: -2 cupholders -wireless charging system for mobile devices; comfort headrests for the two outer rear seats: -elaborately padded additional cushions -adjustable tilt)
- Upholstery: Nappa leather
- Auxiliary heater (The fuel-operated auxiliary heater works independently of the engine in conjunction with the automatic climate control. Depending on the outside temperature, the powerful and efficient 5 kW system consumes a maximum of 0.35 liters of gasoline or 0.31 liters of diesel per half hour. The system automatically deactivates after a maximum of approximately 50 minutes to conserve battery power. To ensure the engine can be started, the auxiliary heater cannot be activated if the battery is weak.)
- Underprotection (technical underprotection)
- Decorative elements: open-pored brown walnut wood

Brief expert findings

Documents submitted	At the time of the inspection, the vehicle registration certificate Part 2 (title) was available, but the vehicle registration certificate Part 1 (document) was not. (Copy)
VIN comparison	The vehicle identification number (VIN) was read from the vehicle and its conformity with the submitted documents was confirmed by the undersigned during the inspection.
Inspection	The inspection conditions were sufficient for the assessment of the vehicle. Lifting equipment and/or a pit were available for examining the vehicle.
Test drive	No test drive/shunting maneuver was carried out during the inspection of the vehicle.
Engine function test	An engine test run was performed.



Value reducing factors

No.	Component group	Description
1	Boot lid / rear door	Boot lid - dent(s) - Smooth repair work
2	Sill - left side	Sill - Scratch(es) - Smart repair
3	Side panel - rear left side	Sill - Dent / paintcoat damage - Smart repair
4	Mudguard - left side	Wheel well extension (Orangenhaut) - Paint defect - Repair and paint
5	Door - rear left side	Door - dent(s) - Smart repair
6	Wheel / tyres	Tyre - front right side - Worn - Replace
7	Door - front left side	Door seal - Broken / torn - Replace
8	Misc.	Inspection / maintenance - Due - Perform
9	Wheel / tyres	Alloy rim - rear right side - Scratch(es) - Loss in value
10	Rear bumper	Rear bumper - Scratch(es) - Paint
11	Front bumper	Front bumper (Einschlüsse und orangenhaut) - Unprofessionally repaired - Repair and paint

Wear and tear

No.	Component group	Description
1	Seat - front	Seat cover - left side - Scratch(es) - No deduction
2	Side panel - rear right side	Sill - Scratch(es) - No deduction
3	Door - rear right side	Handle - Scratch(es) - No deduction
4	Trim / covers	Boot lid - interior trim - Scratch(es) - No deduction
5	Wheel / tyres	Tyre - right (Über 4mm) - No deduction
6	Wheel / tyres	Tyre - front left side (Über 4mm) - No deduction
7	Mudguard - right side	Mudguard - right side - dent(s) - No deduction
8	Vehicle glazing	Windscreen - Stone chips - No deduction
9	Side panel - rear right side	Side panel - Scratch(es) - No deduction
10	Door - rear right side	Door - Scratch(es) - Cover / polish
11	Door - front left side	Door - Scratch(es) - Cover / polish

The vehicle shows signs of wear and tear commensurate with its age and use.

Missing parts

Description

Equipment - Tirefit filler
Trim / covers - Floor mats
Interior - Separation net
Interior - Boot cover / roller cover
Equipment - Vehicle key

Repainting

No. Repainting

1 Bumper front, Unprofessionally carried out



Order/Scope of Order

An order was placed to prepare a sales report for the described vehicle. This report includes the following:

- Description of key vehicle information
- Documentation of equipment features
(Delivery by third-party service providers)
- Documentation of damage, defects, missing parts
- Documentation of prior damage, unrepaired prior damage, repainting
- A brief visual or functional inspection of the equipment details, if possible.
(Functional testing of driver assistance systems is not included in the scope of services!)
- a photographic documentation of the vehicle

Basis for the order

This product is based on the guidelines for vehicle returns and valuations published by Alphabet Fleet GmbH. The expert makes the specific findings in each individual case objectively, within the framework of the prescribed standards, based on their own expertise.

The vehicle inspection takes place in a fully assembled, unassembled state.

Damage or defects that can only be detected during disassembly/diagnostic work or through further investigation remain within the realm of prognostic risk. An increased risk exists due to concealed defects caused by fraudulent misrepresentation and which were not identifiable by the expert.

Damage or defects resulting from normal use or wear and tear of the vehicle will be accepted in accordance with the applicable standard.

There was no explicit identification or monetary consideration of the expected features within the product.

Features which, in their nature and extent, slightly exceed normal use but do not constitute unacceptable damage, will be documented and indicated as signs of wear, if applicable.

Damage or defects that, according to the applicable standard, can no longer be attributed to normal use or wear and tear are listed under "Value Reducing Factors" in the product description.

Depending on the product specification, a monetary ID can be provided. If this takes place, the costs can be 100% or pro rata depending on the vehicle's age and mileage.

Previous damages

No apparent prior damage that had been repaired could be found on the vehicle.



Figure 1: Diagonal front (left)



Figure 2: Diagonal front (right)



Figure 3: Diagonal rear (left)



Figure 4: Diagonal rear (right)



Figure 5: Interior - front



Figure 6: Interior - rear



Figure 7: Instrument cluster



Figure 8: Instrument panel



Figure 9: Interior 360° view



Figure 10: Cargo area



Figure 11: VIN



Figure 12: Mounted tyres



Figure 13: Documents



Figure 14: Navigation



Figure 15: Misc.



Figure 16: Misc.



Figure 17: Misc.



Figure 18: Misc.



Figure 19: Misc.



Figure 20: Misc.

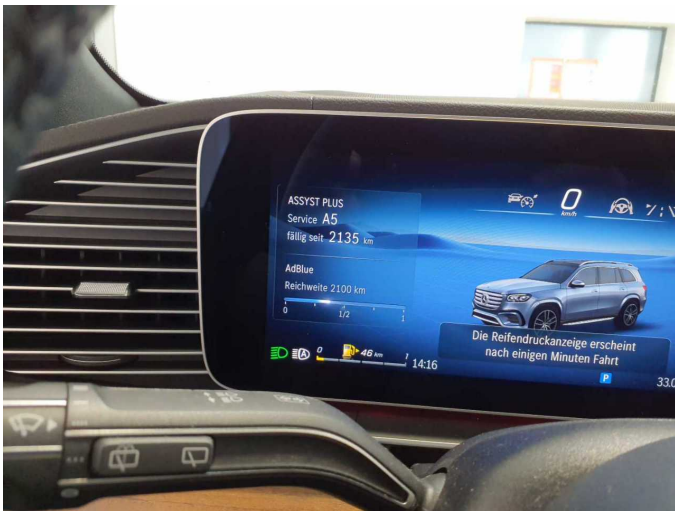


Figure 21: Misc.



Figure 22: Misc.



Figure 23: Misc.



Figure 24: Misc.



Figure 25: Misc.



Figure 26: Misc.



Figure 27: Misc.



Figure 28: Misc.



Figure 29: Misc.

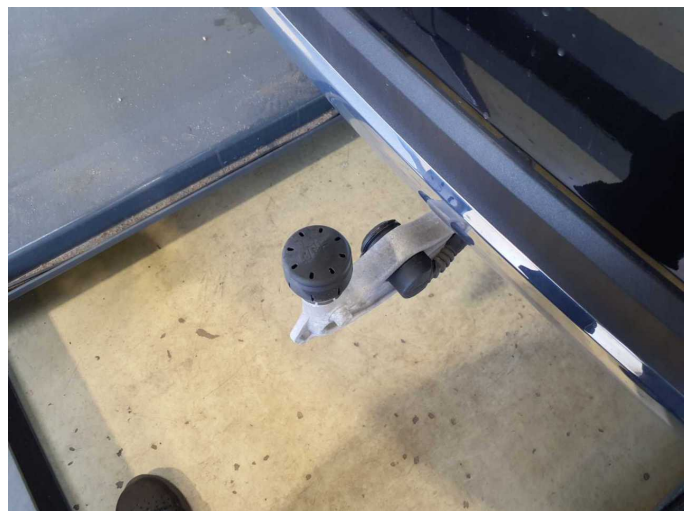


Figure 30: Misc.



Figure 31: Misc.



Figure 32: Misc.



Damage 1: Boot lid / rear door: Boot lid - dent(s) - Smooth repair work



Damage 1: Boot lid / rear door: Boot lid - dent(s) - Smooth repair work



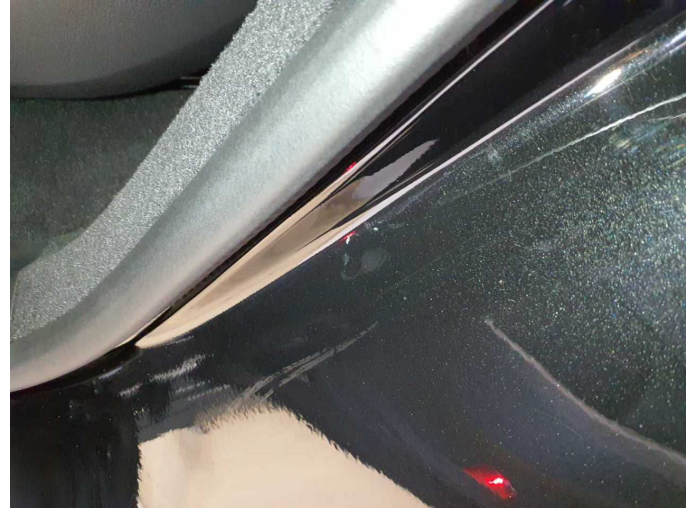
Damage 2: Sill - left side: Sill - Scratch(es) - Smart repair



Damage 2: Sill - left side: Sill - Scratch(es) - Smart repair



Damage 3: Side panel - rear left side: Sill - Dent / paintcoat damage - Smart repair



Damage 3: Side panel - rear left side: Sill - Dent / paintcoat damage - Smart repair



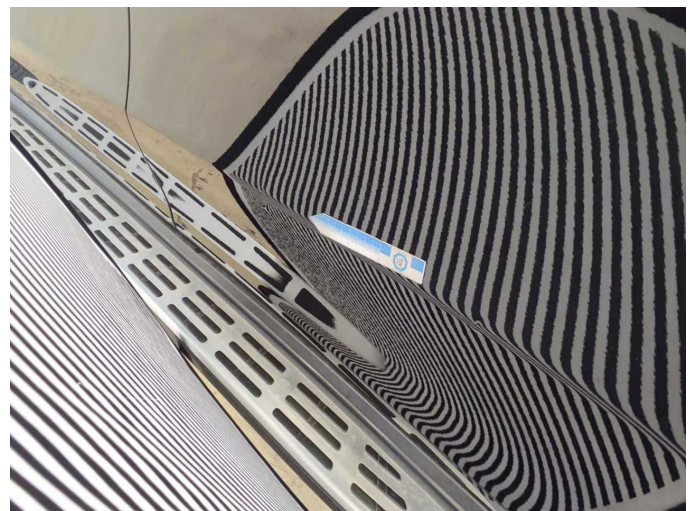
Damage 4: Mudguard - left side: Wheel well extension (Orangenhaut) - Paint defect - Repair and paint



Damage 4: Mudguard - left side: Wheel well extension (Orangenhaut) - Paint defect - Repair and paint



Damage 5: Door - rear left side: Door - dent(s) - Smart repair



Damage 5: Door - rear left side: Door - dent(s) - Smart repair



Damage 6: Wheel / tyres: Tyre - front right side - Worn - Replace



Damage 7: Door - front left side: Door seal - Broken / torn - Replace



Damage 7: Door - front left side: Door seal - Broken / torn - Replace



Damage 8: Misc.: Inspection / maintenance - Due - Perform



Damage 9: Wheel / tyres: Alloy rim - rear right side - Scratch(es) - Loss in value



Damage 9: Wheel / tyres: Alloy rim - rear right side - Scratch(es) - Loss in value



Damage 10: Rear bumper: Rear bumper - Scratch(es) - Paint



Damage 10: Rear bumper: Rear bumper - Scratch(es) - Paint



Damage 10: Rear bumper: Rear bumper - Scratch(es) - Paint



Damage 10: Rear bumper: Rear bumper - Scratch(es) - Paint



Damage 11: Front bumper: Front bumper (Einschlüsse und orangenhaut)
- Unprofessionally repaired - Repair and paint



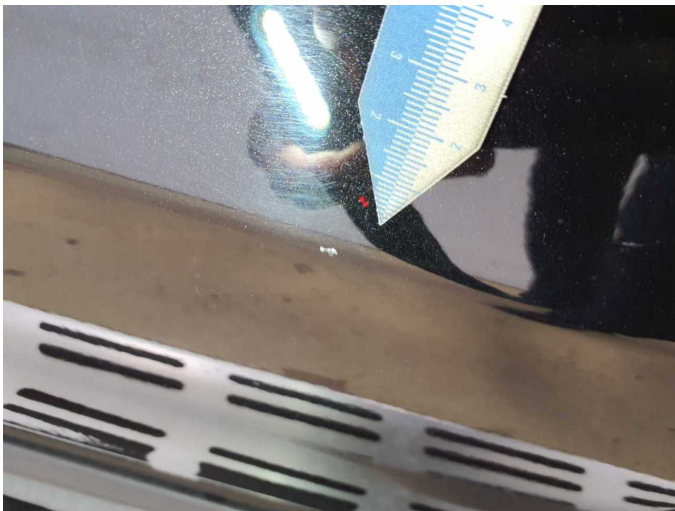
Damage 11: Front bumper: Front bumper (Einschlüsse und orangenhaut)
- Unprofessionally repaired - Repair and paint



Damage 11: Front bumper: Front bumper (Einschlüsse und orangenhaut)
- Unprofessionally repaired - Repair and paint



Wear and tear 10: Door - rear right side: Door - Scratch(es) - Cover /
polish



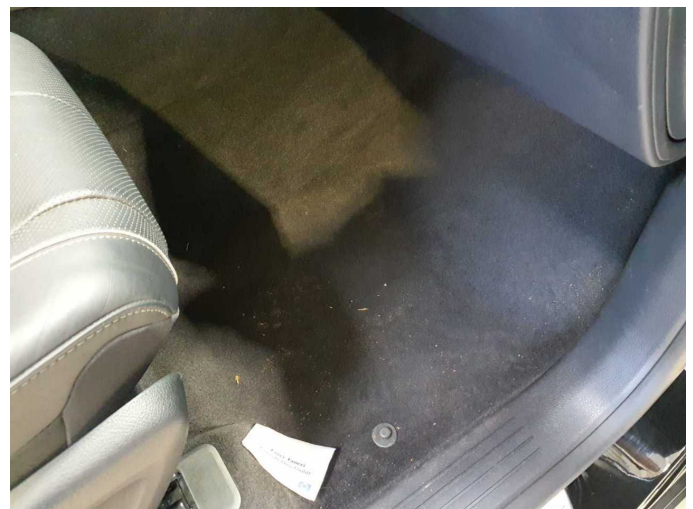
Wear and tear 10: Door - rear right side: Door - Scratch(es) - Cover /
polish



Wear and tear 11: Door - front left side: Door - Scratch(es) - Cover /
polish



Wear and tear 11: Door - front left side: Door - Scratch(es) - Cover /
polish



Missing part 2: Trim / covers: Floor mats - Missing - Replace