

Expertise

Protocol number: 46201321
Order No. / Reference: 26558790
Inspection date: 22 Jun 2026

Manufacturer: Volvo

Model: XC90 T8 AWD Recharge Ultimate Dark

VIN: YV1LFH5V3P1953024



Vehicle details

Manufacturer / Type / Model / Equipment

Volvo XC90 T8 AWD Recharge Ultimate Dark

Vehicle Identification number YV1LFH5V3P1953024

Mileage (Read) 41,895 km

First registration 22 Dec 2022

Number of holders 1

Next periodical technical inspection 01/2028

(Report not on hand)

Power / Engine displacement 228 kw / 1,969 ccm

Fuel type / Cylinder Hybrid P / E ext. charg. / 4

Gearbox / Number of gears Automatic / 8

Type of drive All-wheel drive

Type of vehicle SUV

Colour / colour code Crystal Weiß-Perleffekt

Doors / Seats 5 / 7

Upholstery type Leather

Colour of upholstery Black

Type of use rental car

TÜV SÜD Auto Partner GmbH
Gutenbergstraße 13
70771 Leinfelden-Echterdingen

Inspection location
Hartmann Fleet Professionals GmbH
Leerenstraße 25
29683 Bad Fallingbommel



Equipment



Standard equipment

- ABS - Anti-lock Braking System
- Passenger side airbag can be deactivated
- Active safety belts with belt tensioners
- Aluminum loading sill protector in the luggage compartment
- Applications in the front bumper in high-gloss black
- Armrests with integrated storage compartment and cup holders for the 3rd row of seats (left and right)
- Electrically adjustable exterior mirrors
- Outdoor temperature display
- Hill Descent Control (HDC)
- Hill Start Assist (HSA)
- LED turn signals integrated into the exterior mirrors
- Brake energy recuperation
- Headliner and door pillars in nubuck fabric
- Roof rails in high-gloss black (integrated)
- Digital services including Google Maps navigation system
- Tachometer
- Driver Awareness
- Aluminum door sill plates with Recharge lettering, front and rear
- Advanced air purification system with fine dust filtration according to air quality standard PM2.5
- Automatic emergency braking
- Luggage compartment partition net
- Seat belt height adjustment front and rear (2nd row of seats)
- Automatic tailgate
- Interior and exterior mirrors automatically dimming
- ISOFIX mounting for the outer rear seats
- Keyless Start
- Automatic climate control with 4-zone temperature control
- Headrests (7)
- Charging box under the cargo floor
- Charging cable Schuko/Type 2 (Mode 2)
- Steering wheel adjustable for height and reach
- Steering wheel: Multifunction buttons on the steering wheel
- Front center armrest including cup holder
- Package: Light Package
- Panoramic glass sunroof with lifting function (electric)
- Parking ticket holder
- Upholstery: Leather/leatherette comfort seats
- Radio accessories: Two USB-C ports on the back of the center console
- Tire pressure monitoring system
- Wheels: 20" 5-spoke alloy wheels, diamond cut/high-gloss black
- Safety Assistance (Ultimate)
- Speed-sensitive power steering
- Seats: Third row of seats (7-seater)
- Seats: Child seat integrated in the middle rear seat (2nd row).
- Seats: Heated rear seats (outer seats of the 2nd row)
- Sun blinds for the rear side windows (integrated)
- Sport front and rear apron
- Acoustic Vehicle Alerting System (AVAS)
- Airbags
- All-wheel drive (AWD)
- Android infotainment system
- High-gloss black applications on the rear of the vehicle
- Dashboard and door trim in leather look with contrasting stitching
- Electrically folding exterior mirrors
- Heated exterior mirrors and rear window (automatic)
- Attachment system for carrier bags in the luggage compartment
- Fog sensor for automatic activation of the defroster function
- On-board computer
- third brake light
- Roof edge spoiler
- Deactivating the high-voltage battery
- Digital Instrumentation 2nd Gen.
- Driver Assistance
- Parking assistance, front and rear
- Electronic differential lock
- Electronic stability control
- Electric windows front and rear
- Window surround in high-gloss black
- Bottle holder in the luggage compartment
- Transmission: 8-speed automatic transmission
- Head-up display: Graphic projection of driving information onto the windshield
- rear window wiper
- Intelligent driver information system
- Keyless Drive (electronic access system)
- Child safety lock for the rear doors (electric)
- Air conditioning for the 3rd row of seats
- Headrests of the 2nd row of seats can be folded down (electrically)
- Cargo area roller blind (semi-automatic)
- Steering wheel: Steering wheel heating
- Illuminated makeup mirror for driver and front passenger
- Emergency brake lights
- Package: Seat Comfort Package
- Electric parking brake
- Pollen filter
- Radio: High Performance Sound Pro audio system by Harman/Kardon
- Rain sensor with automatic light function
- Run-off Road Protection
- Wheels: Tire sealant
- Rear view camera
- Whiplash Protection System (WHIPS)
- Safety braking system with disc brakes all around (internally ventilated)
- Seats: Rear bench seat of the 2nd row in a 40/20/40 ratio or completely foldable
- Seats: Heated front seats



- Auxiliary heater with timer (fuel-operated)
- Start/Stop technology
- Phone: Inductive smartphone charging system
- Premium textile floor mats, front and rear
- Glazing: Colored glazing
- Preparation for Trailer Stability Assist (TSA)
- Immobiliser
- Central locking system with two remote controls and integrated emergency keys

Extra equipment

- Towbar (semi-electric)
- Paint finish: Crystal White Pearl Effect
- Type 2 (Mode 3) charging cable
- Upholstery: Nappa leather comfort seats (perforated front seats) (with active ventilation and electrically adjustable side bolsters for driver and front passenger seats including rear center armrest (2nd row) - gearshift lever made of Swedish crystal glass by Orrefors - real wood inlay: Grey Ash - headliner: light beige)
- Glazing: Acoustic glazing for the side windows (UV and burglar-resistant laminated glass panes)

- Sport exterior mirrors in high-gloss black
- Sport front grille with horizontal struts and surround in high-gloss black
- Power socket
- Textile floor mat for the 3rd row of seats
- First aid kit and warning triangle
- Lashing eyes in the luggage compartment (foldable)
- Warning tone/indicator when seat belts are not fastened (for all seats)

- Chassis: Adaptive air suspension with Four-C technology (Continuously Controlled Chassis Concept) with adjustable modes Comfort, Eco, Dynamic, Off Road including automatic leveling and entry/rear lowering (4/5 cm)
- Wheels: 21" alloy wheels, 5-V-spoke design, diamond cut/high-gloss black (tires 275/40 R21)
- Seats: Massage function for driver and front passenger seats

Brief expert findings

Documents submitted	At the time of the inspection, the vehicle registration certificate Part 2 (title) was available, but the vehicle registration certificate Part 1 (document) was not. (Copy)
VIN comparison	The vehicle identification number (VIN) was read from the vehicle and its conformity with the submitted documents was confirmed by the undersigned during the inspection.
Inspection	The inspection conditions were sufficient for the assessment of the vehicle. Lifting equipment and/or a pit were available for examining the vehicle.
Test drive	No test drive/shunting maneuver was carried out during the inspection of the vehicle.
Engine function test	An engine test run was performed.

Value reducing factors

No.	Component group	Description
1	Misc.	Main inspection - No evidence - No deduction
2	Mudguard - left side	Wheel well extension - Scratch(es) - Smart repair
3	Wheel / tyres	Alloy rim - front left side - Scratch(es) - Loss in value
4	Front bumper	Spoiler - Deformed - Replace
5	Front bumper	Front bumper - Scratch(es) - Paint
6	Wheel / tyres	Alloy rim - front right side - Scratched - Replace
7	Wheel / tyres	Alloy rim - rear right side - Scratched - Replace
8	Wheel / tyres	Alloy rim - rear left side - Scratched - Replace

Wear and tear

No.	Component group	Description
1	Front bumper	Front strip - Scratch(es) - No deduction

The vehicle shows signs of wear and tear commensurate with its age and use.



Missing parts

Description

Equipment - charging cable (Mode 2 (mit Schuko-Stecker))

Previous damages

No. Previous damage

1 Side right, Provided by user / customer, from 12 Jan 2023

Extent of
damage (Net)

2.847,79 €

Repainting

No. Repainting

1 Mudguard - right side, Door - rear right side, Professionally carried out, Invoice of repair done Non-existent

Paint coat thickness measurement

Mudguard - right side

191 µm

Door - rear right side

203 µm

Order/Scope of Order

An order was placed to prepare a sales report for the described vehicle. This report includes the following:

- Description of key vehicle information
- Documentation of equipment features
(*Delivery by third-party service providers*)
- Documentation of damage, defects, missing parts
- Documentation of prior damage, unrepaired prior damage, repainting
- A brief visual or functional inspection of the equipment details, if possible.
(*Functional testing of driver assistance systems is not included in the scope of services!*)
- a photographic documentation of the vehicle

Basis for the order

This product is based on the guidelines for vehicle returns and valuations published by Alphabet Fleet GmbH. The expert makes the specific findings in each individual case objectively, within the framework of the prescribed standards, based on their own expertise.

The vehicle inspection takes place in a fully assembled, unassembled state.

Damage or defects that can only be detected during disassembly/diagnostic work or through further investigation remain within the realm of prognostic risk. An increased risk exists due to concealed defects caused by fraudulent misrepresentation and which were not identifiable by the expert.

Damage or defects resulting from normal use or wear and tear of the vehicle will be accepted in accordance with the applicable standard.

There was no explicit identification or monetary consideration of the expected features within the product.

Features which, in their nature and extent, slightly exceed normal use but do not constitute unacceptable damage, will be documented and indicated as signs of wear, if applicable.

Damage or defects that, according to the applicable standard, can no longer be attributed to normal use or wear and tear are listed under "Value Reducing Factors" in the product description.

Depending on the product specification, a monetary ID can be provided. If this takes place, the costs can be 100% d or pro rata depending on the vehicle's age and mileage.

Previous damages

According to available information previous damages were repaired at the vehicle. Traces of repairs, which allow conclusions about the area of repair, were not recognizable during the inspection.



Figure 1: Diagonal front (left)



Figure 2: Diagonal front (right)



Figure 3: Diagonal rear (left)



Figure 4: Diagonal rear (right)



Figure 5: Interior - front

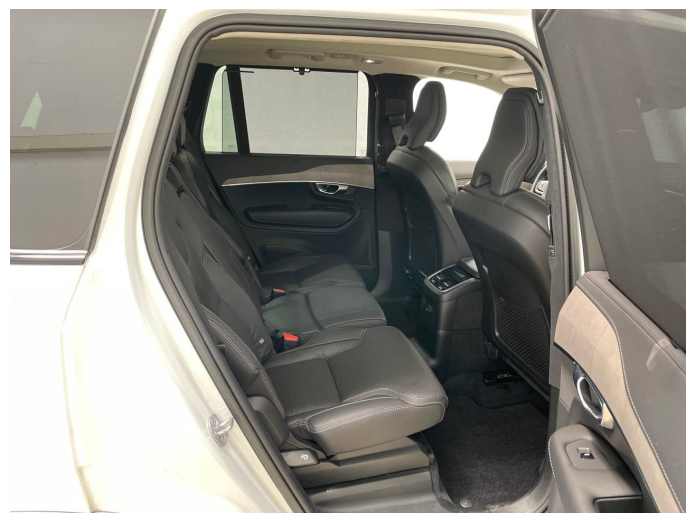


Figure 6: Interior - rear



Figure 7: Instrument cluster



Figure 8: Instrument panel



Figure 9: Interior 360° view



Figure 10: Cargo area



Figure 11: VIN



Figure 12: Mounted tyres

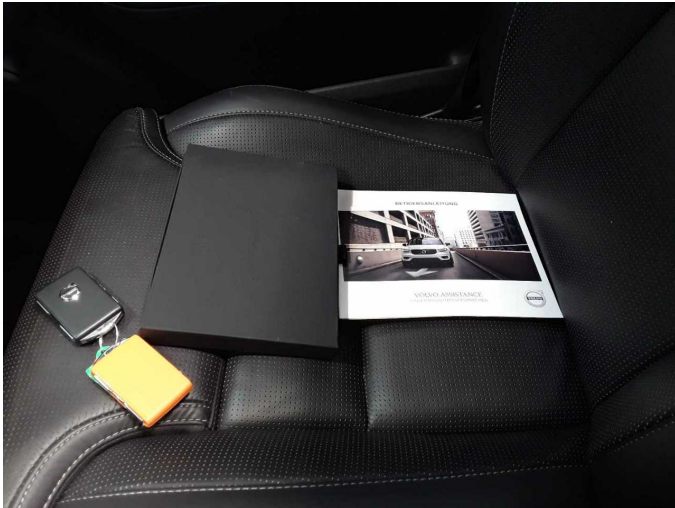


Figure 13: Documents

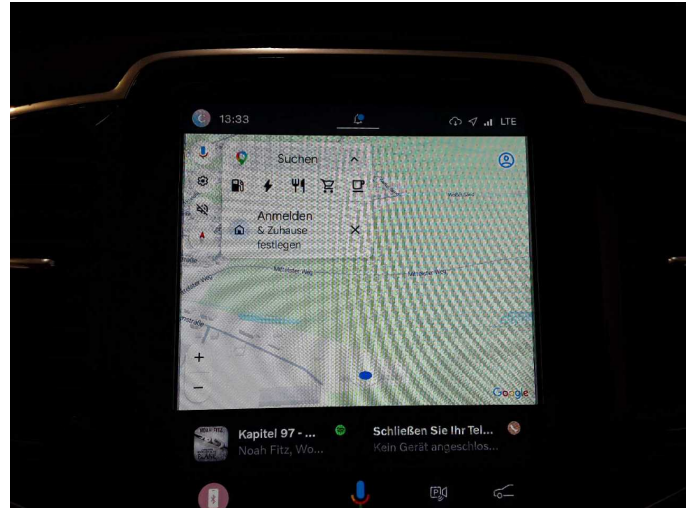


Figure 14: Navigation



Figure 15: Misc.



Figure 16: Misc.

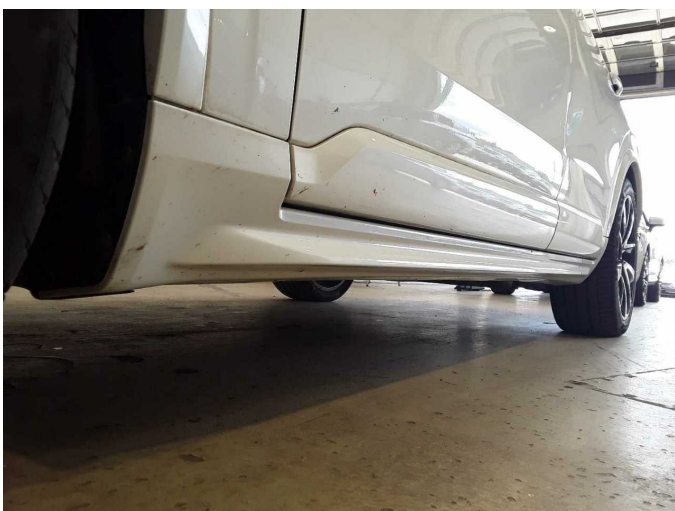


Figure 17: Misc.

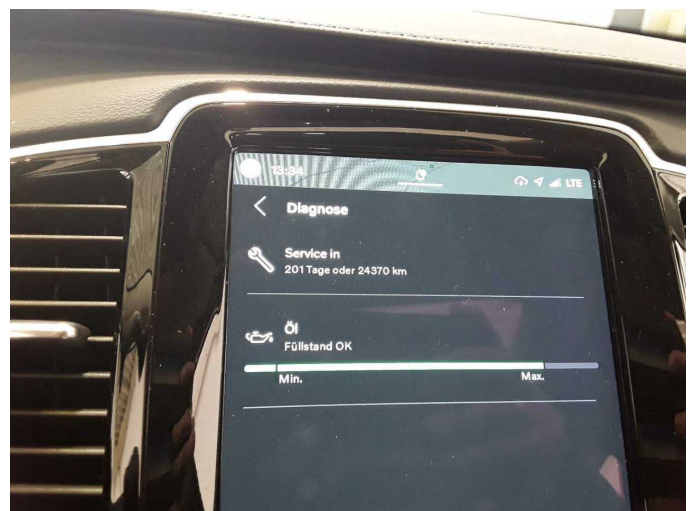


Figure 18: Misc.



Figure 19: Misc.



Figure 20: Misc.



Figure 21: Misc.



Damage 2: Mudguard - left side: Wheel well extension - Scratch(es) - Smart repair



Damage 2: Mudguard - left side: Wheel well extension - Scratch(es) - Smart repair



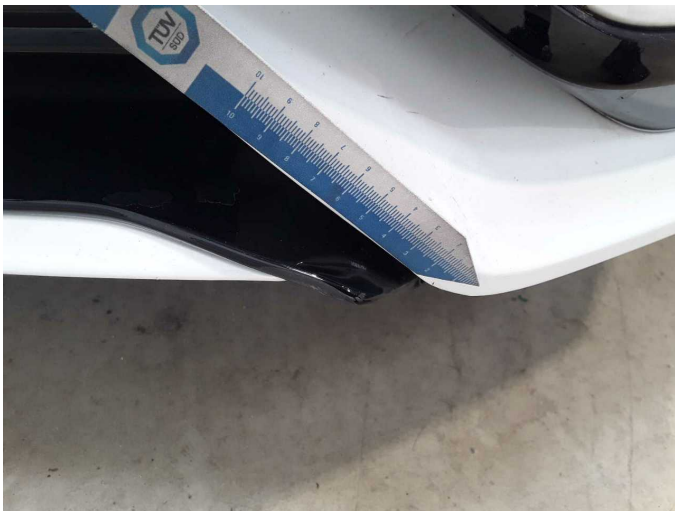
Damage 3: Wheel / tyres: Alloy rim - front left side - Scratch(es) - Loss in value



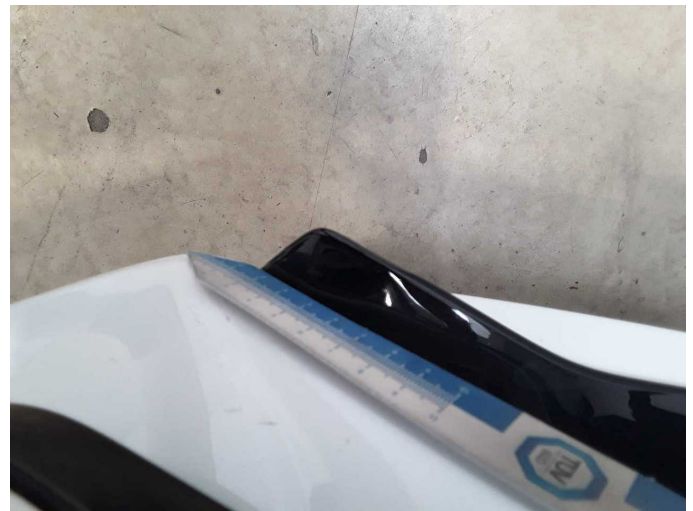
Damage 3: Wheel / tyres: Alloy rim - front left side - Scratch(es) - Loss in value



Damage 4: Front bumper: Spoiler - Deformed - Replace



Damage 4: Front bumper: Spoiler - Deformed - Replace



Damage 4: Front bumper: Spoiler - Deformed - Replace



Damage 4: Front bumper: Spoiler - Deformed - Replace



Damage 5: Front bumper: Front bumper - Scratch(es) - Paint



Damage 5: Front bumper: Front bumper - Scratch(es) - Paint



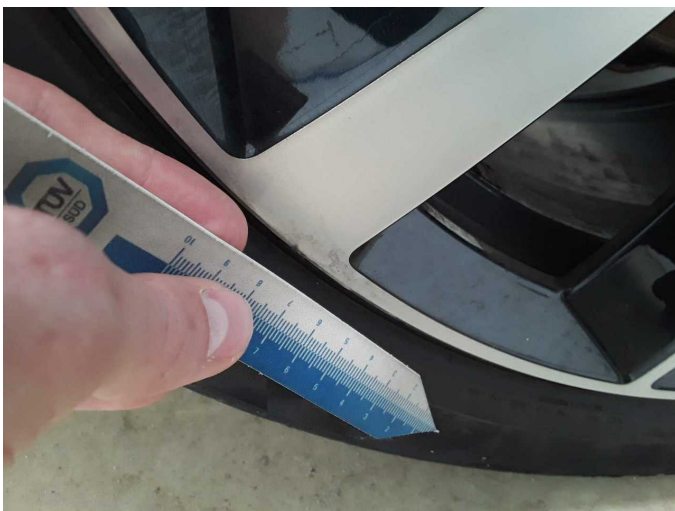
Damage 5: Front bumper: Front bumper - Scratch(es) - Paint



Damage 6: Wheel / tyres: Alloy rim - front right side - Scratched - Replace



Damage 6: Wheel / tyres: Alloy rim - front right side - Scratched - Replace



Damage 6: Wheel / tyres: Alloy rim - front right side - Scratched - Replace



Damage 6: Wheel / tyres: Alloy rim - front right side - Scratched - Replace



Damage 7: Wheel / tyres: Alloy rim - rear right side - Scratched - Replace



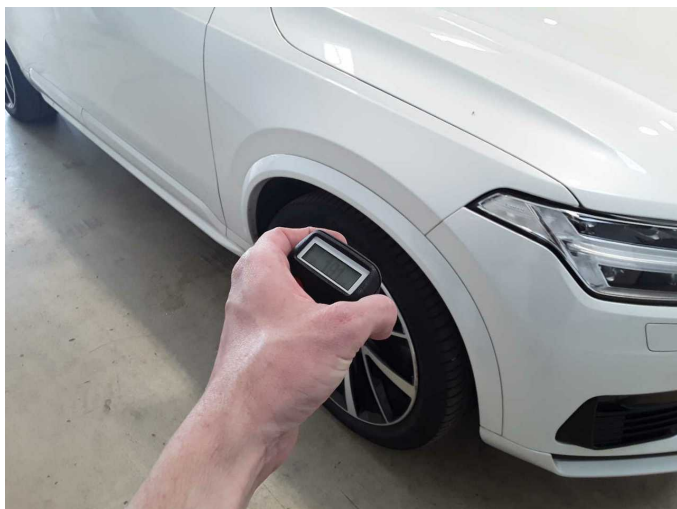
Damage 7: Wheel / tyres: Alloy rim - rear right side - Scratched - Replace



Damage 8: Wheel / tyres: Alloy rim - rear left side - Scratched - Replace



Damage 8: Wheel / tyres: Alloy rim - rear left side - Scratched - Replace



Repainting 1: Mudguard - right side, Door - rear right side



Repainting 1: Mudguard - right side, Door - rear right side



Repainting 1: Mudguard - right side, Door - rear right side



Repainting 1: Mudguard - right side, Door - rear right side



Wartungshistorie

(gemäß Auftraggeber Informationen)

Fahrgestellnummer: YV1LFH5V3P1953024

Hersteller / Modell: VOLVO VOLVO XC90 T8 AWD Recharge Ultimate Dark

Datum	KM-Stand	Beschreibung
14.01.2026	36.259	AU; Motoröl b. Wartung; Ölfilter ern; Regelwartungsdienst; Wartung Sonstiges
11.12.2025	34.992	Reparatur Sonstiges; Systemtest/Eigendiagnose
30.01.2025	26.800	Motoröl b. Wartung; Ölfilter ern; Regelwartungsdienst; Wartung Sonstiges
29.01.2024	12.919	Motoröl b. Wartung; Ölfilter ern; Regelwartungsdienst; Wartung Sonstiges