

Expertise

Protocol number: 46038157
Order No. / Reference: 26469914
Inspection date: 17 Jun 2026

Manufacturer: Skoda

Model: Superb Combi 2.0 TDI 4x4 DSG L&K

VIN: TMBLR7NP8P7031807



Vehicle details

Manufacturer / Type / Model / Equipment

Skoda Superb Combi 2.0 TDI 4x4 DSG L&K

Vehicle Identification number TMBLR7NP8P7031807

Mileage (Read) 86,516 km

First registration 8 Feb 2023

Number of holders 1

Next periodical technical inspection 02/2028
(Report on hand)

Power / Engine displacement 147 kw / 1,968 ccm

Fuel type / Cylinder Diesel / 4

Gearbox / Number of gears Automatic / 7

Type of drive All-wheel drive

Type of vehicle Station wagon

Colour / colour code Graphite Grau Metallic

Doors / Seats 5 / 5

Upholstery type Leather

Colour of upholstery Black



Vehicle details			
Maintenance booklet / proof	digital proof / complete	Next maintenance in	6,000 km
Last service on / at	08/2025 at 62,458 km		
Key is / should be	3 / 3	FZG documents	ZB#2 (B) was available (copy), ZB#1 (S) was not available.
		Letter No.	GQ541167
Previous damage / Accident	None detectable	Repainting	None detectable
Inspection conditions	sufficient	Lifting equipment / pit	yes
Test drive	Not performed	Engine function test	Performed
Manufacturer key number/ type code number	8004 / AWC 00540		
Emission standard	EURO6;WLTP;AP;PI/CI; M, N1 I	fine dust sticker	
Permitted total weight	2,280 kg	Empty weight	

Tyres

Mounted tyres				
#	Tyre size	Type of tyre	Manufacturer	Tread depth
1)	235/40 R19 96W	Summer tyres on Light alloy	Bridgestone	5 mm
	235/40 R19 98V	Summer tyres on Light alloy	Bridgestone	5 mm
2)	235/40 R19 98V	Summer tyres on Light alloy	Bridgestone	6mm / 6mm
Additional tyres				
#	Tyre size	Type of tyre	Manufacturer	Tread depth
1)	215/55 R17 98V	Winter tyres on Light alloy	Goodyear	6mm / 6mm
2)	215/55 R17 98V	Winter tyres on Light alloy	Goodyear	6mm / 6mm

Legend: Tread depth information for the left tire is listed first, for the right tire it is listed second on the axle in the direction of travel.

TÜV SÜD Auto Partner GmbH
Wiesenring 2
04159 Leipzig

Inspection location
Mosolf SE & Co.KG
August-Horch-Straße 1
04519 Rackwitz



Equipment



Standard equipment

- Closed storage compartments behind the wheel arches in the trunk, including cargo elements
- Airbag, driver and switchable passenger airbag
- Airbag, driver's knee airbag
- Airbag, head airbags
- Airbag, front side airbags
- All-wheel drive 4x4
- Anti-lock braking system (ABS)
- Traction control (ASR)
- Electrically adjustable and heated exterior mirrors
- Exterior mirrors with memory function
- Electrically folding exterior mirrors (with boarding lights - automatically dimming on the driver's side)
- Hydraulic brake assist (HBA)
- Roof rails, anodized
- Diesel particulate filter and SCR catalyst
- Tachometer
- Dynamic Light Assistant (Masked Continuous High Beam)
- Electronic parking brake including auto-hold function
- Electronic transverse differential lock (XDS+)
- Driving light assistant and rain sensor (Easy Light Assist) (Coming and Leaving Home function and tunnel light)
- Electric windows front and rear, including anti-pinch protection and child safety lock
- Front and rear footwell lighting
- Cruise control system including speed limiter
- Transmission: 7-speed dual-clutch transmission (DSG)
- Tinted windows
- Heated rear window
- Rear window wiper including windshield washer system
- ISOFIX preparation on the outer rear seats, including top tether
- Air Care Climatronic air conditioning (2-zone) (fully automatic, separately adjustable for driver and front passenger, including odor and allergen filter and air-conditioned glove compartment)
- Metal loading sill protector
- LED ambient lighting (dashboard and decorative trim with selectable color climate, reading lamps, door handles and footwell as well as sun visors with LED lighting - projection of the SKODA lettering from the underside of the door onto the ground (front doors))
- Steering wheel: Steering wheel with multifunction buttons including paddle shifters
- Rear center armrest with cup holders and pass-through option
- Front center armrest with storage compartment
- Multifunctional storage compartment under the boot cover
- LED fog lights with integrated cornering lights
- Upholstery: Executive leather interior (combined with high-quality materials)
- Radio: CANTON sound system (11 speakers - 1 subwoofer - digital equalizer 610W)
- Radio accessories: Voice control
- Storage compartments (ticket holder on the windshield, 4 roof grab handles, rear with coat hooks, coat hooks on the B-pillar, holder for the warning vests in the front doors, glasses compartment in the headliner, storage compartments in the door panels (front and rear) with 1.5l bottle holders, cup holder in the front center console with easy-open bottle opening, storage pockets on the front seat backrests, storage compartments behind the wheel arches in the trunk including cargo elements, illuminated trunk)
- Exterior mirrors and door handles in body color
- Illuminated glove compartment
- Hill start assist
- Grey headliner
- Decorative inlay Piano Black
- Digital Cockpit Plus 10.2"
- Third brake light
- Electric tailgate opening (with multi-function storage compartment under the boot cover)
- Electronic Stability Control (ESC)
- Chassis: Adaptive chassis DCC (10 mm lowering, adjustable damper setting) (including driving profile selection (Normal, Comfort, Eco, Sport, Individual))
- Front radar assist including city emergency braking function (The front radar assist warns of impending collisions and initiates braking to reduce the force of an unavoidable impact. The front radar assist continuously monitors the distance to the vehicle ahead using a radar sensor integrated into the radiator grille.)
- Interior mirror automatically dimming
- Kessy, keyless entry and start-stop system
- Child safety lock for rear doors & windows, electric
- Boot cover, roll-up and removable, semi-automatic
- Front and rear headrests are height-adjustable.
- Radiator grille slats, frame, side moldings and window surrounds chrome-plated
- LED reading lights at the front and rear of the headliner
- LED taillights in crystal glass look and animated turn signals
- Remote release of the rear seat backrests in the trunk
- Steering wheel: Height and reach adjustable leather steering wheel
- Matrix LED headlights (dynamic high beam assist - automatic headlight range control - headlight cleaning system - LED taillights in crystal glass look - animated turn signals)
- Engine drag torque control (MSR)
- Multi-collision brake
- Front and rear parking sensors
- Radio: Bolero infotainment system (capacitive 8" touch display in glass design - Wireless Smartlink (Apple CarPlay, Android Auto))
- Radio accessories: Digital radio reception DAB+
- Radio accessories: USB ports at the front (Type-C) and USB charging port (Type-A) in the center armrest
- Umbrella compartments in the front side doors
- Tire mobility kit (tire repair spray incl. compressor)



- Radio accessories: Wireless SmartLink (Apple CarPlay, Android Auto)
- Tire pressure monitoring
- Gearshift and handbrake levers in leather
- Electromechanical power steering
- Seats: Heated front seats
- Seats: Adjustable lumbar support in the front seats
- Seats: Electrically adjustable front seats with memory function
- SKODA Care Connect (SOS emergency call function (Emergency Call incl. automatic activation in the event of an accident with airbag deployment), Mobility service (connection for rapid assistance in case of breakdown), Information service (connection to the hotline for all questions relating to vehicle functions), Free remote vehicle access for 1 year (Remote Access) with access to vehicle data and functions via smartphone, e.g. parking position, activating hazard warning lights, current fuel level)
- Chrome-plated elements (on air vents, light switches, music or navigation systems, air conditioning)
- Immobiliser

Extra equipment

- Heated windshield, wireless
- Package: Assistance Plus (Lane Change Assist - Area View - Trailer Maneuvering Assist & Park Assist - Trailer Hitch - (Active Tire Pressure Monitoring System) - Driver Fatigue Detection)
- Package: Comfort Plus (Combi) (3-zone Climatronic - heated front and rear seats - KESSY - 3rd vehicle key - comfort opening for the tailgate - heated steering wheel (with shift paddles) - sunshade for the rear side windows)
- Package: Transport (Combi) (Boot net - Variable loading floor - Luggage net partition)
- Wheels: 19" Trinity alloy wheels, diamond-cut/anthracite (8J x 19" ET 44 with 235/40 R19 tires)

Retrofitted equipment

- WD5 waste bin omission
- Lounge Step removed from WD3

- Heated windshield washer nozzles
- Superb safety belts (Height-adjustable three-point front seat belts with belt tensioners - Three three-point rear seat belts - Belt fastening indicator for all seats)
- Seats: Height-adjustable front seats
- Seats: Rear seat backrest split 60:40, foldable
- Sun visor on driver and passenger side with illuminated make-up mirror
- Start/stop system including brake energy recuperation
- 12V socket in the trunk
- 12V socket in the center console, front and rear
- Sunset (rear window and rear side windows tinted dark)
- Telephone: Bluetooth hands-free system
- Textile floor mats
- Door sill plates
- Glazing: Acoustic glazing in the front side windows
- Lashing eyes in the trunk
- Central locking with remote control

- Paint finish: Metallic
- Package: Business Columbus (Columbus navigation system - voice control - Wi-Fi hotspot - Wireless Smartlink for Apple CarPlay - 9.2" capacitive touchscreen in glass design - Phonebox - Traveller assistance system (traffic sign recognition, predictive lane keeping assist ACC, adaptive lane keeping assist, emergency and traffic jam assist, capacitive steering wheel with hands-off detection) - 230 V socket and 3 USB ports, tablet holder - Infotainment Online (3-year subscription))
- Progressive steering (adjustment of the steering angle depending on the speed)

- Adapter removed from WD1

Brief expert findings

Documents submitted	At the time of the inspection, the vehicle registration certificate Part 2 (title) was available, but the vehicle registration certificate Part 1 (document) was not. (Copy)
VIN comparison	The vehicle identification number (VIN) was read from the vehicle and its conformity with the submitted documents was confirmed by the undersigned during the inspection.
Inspection	The inspection conditions were sufficient for the assessment of the vehicle. Lifting equipment and/or a pit were available for examining the vehicle.
Test drive	No test drive/shunting maneuver was carried out during the inspection of the vehicle.
Engine function test	An engine test run was performed.



Value reducing factors

No.	Component group	Description
1	Wheel / tyres	Alloy rim - rear left side - Scratch(es) - Loss in value
2	Side panel - rear right side	Side panel - dent(s) - Smart repair
3	Side panel - rear left side	Side panel - dent(s) - Smart repair
4	Wheel / tyres	Alloy rim - rear right side - Scratched - Loss in value
5	Front bumper	Front bumper - Scratch(es) - Paint

Missing parts

Description

Equipment - Tirefit complete

Order/Scope of Order

An order was placed to prepare a sales report for the described vehicle. This report includes the following:

- Description of key vehicle information
- Documentation of equipment features
(Delivery by third-party service providers)
- Documentation of damage, defects, missing parts
- Documentation of prior damage, unrepaired prior damage, repainting
- A brief visual or functional inspection of the equipment details, if possible.
(Functional testing of driver assistance systems is not included in the scope of services!)
- a photographic documentation of the vehicle

Basis for the order

This product is based on the guidelines for vehicle returns and valuations published by Alphabet Fleet GmbH. The expert makes the specific findings in each individual case objectively, within the framework of the prescribed standards, based on their own expertise.

The vehicle inspection takes place in a fully assembled, unassembled state.

Damage or defects that can only be detected during disassembly/diagnostic work or through further investigation remain within the realm of prognostic risk. An increased risk exists due to concealed defects caused by fraudulent misrepresentation and which were not identifiable by the expert.

Damage or defects resulting from normal use or wear and tear of the vehicle will be accepted in accordance with the applicable standard.

There was no explicit identification or monetary consideration of the expected features within the product.

Features which, in their nature and extent, slightly exceed normal use but do not constitute unacceptable damage, will be documented and indicated as signs of wear, if applicable.

Damage or defects that, according to the applicable standard, can no longer be attributed to normal use or wear and tear are listed under "Value Reducing Factors" in the product description.

Depending on the product specification, a monetary ID can be provided. If this takes place, the costs can be 100% d or pro rata depending on the vehicle's age and mileage.

Previous damages

No apparent prior damage that had been repaired could be found on the vehicle.



Figure 1: Diagonal front (left)



Figure 2: Diagonal front (right)



Figure 3: Diagonal rear (left)



Figure 4: Diagonal rear (right)



Figure 5: Interior - front



Figure 6: Interior - rear



Figure 7: Instrument cluster



Figure 8: Instrument panel

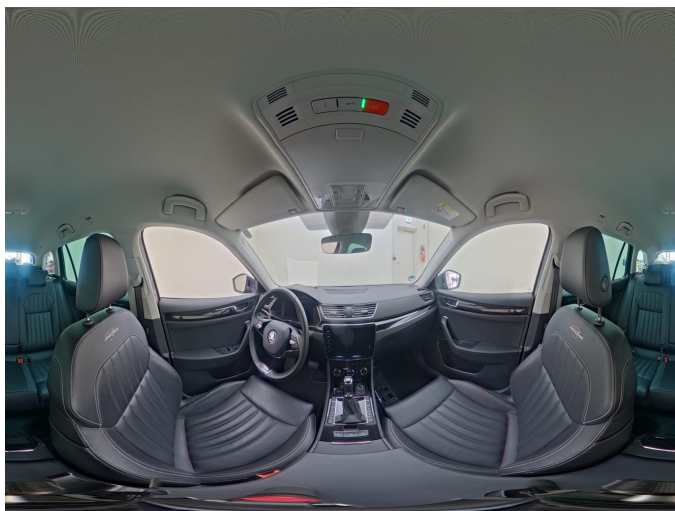


Figure 9: Interior 360° view

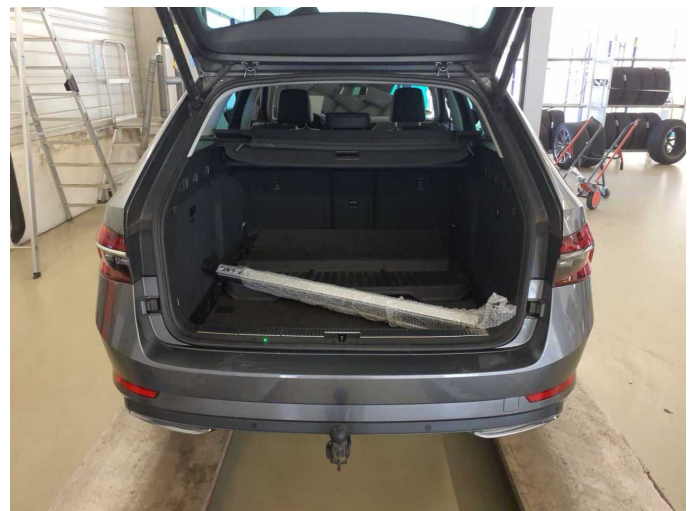


Figure 10: Cargo area



Figure 11: VIN



Figure 12: Mounted tyres



Figure 13: Documents



Figure 14: Documents

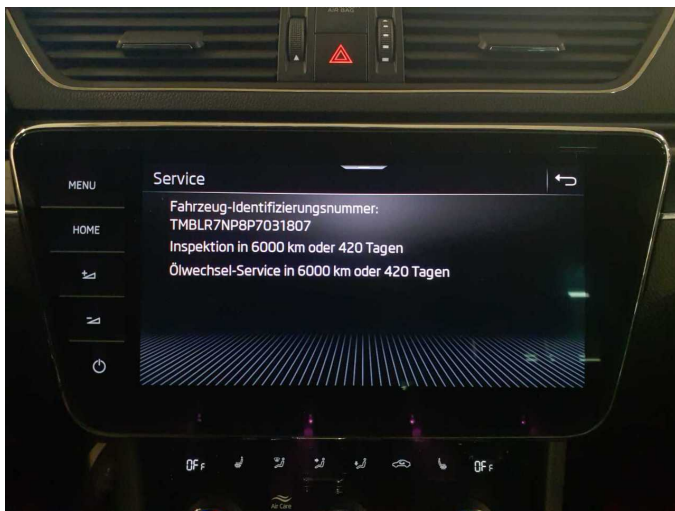


Figure 15: Documents



Figure 16: Additional tyres



Figure 17: Navigation



Figure 18: Misc.



Figure 19: Misc.



Figure 20: Misc.



Figure 21: Misc.



Figure 22: Misc.



Figure 23: Misc.

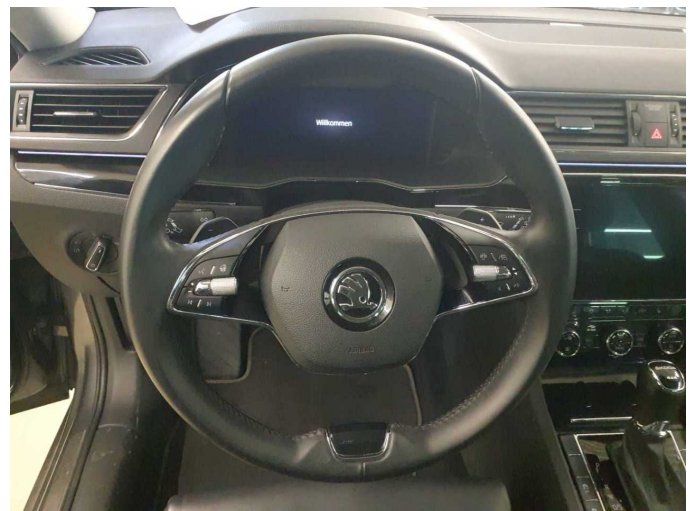


Figure 24: Misc.



Figure 25: Misc.

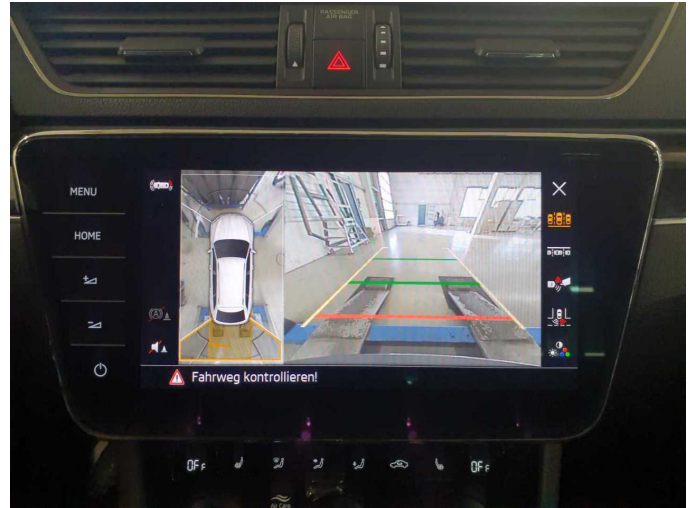


Figure 26: Misc.

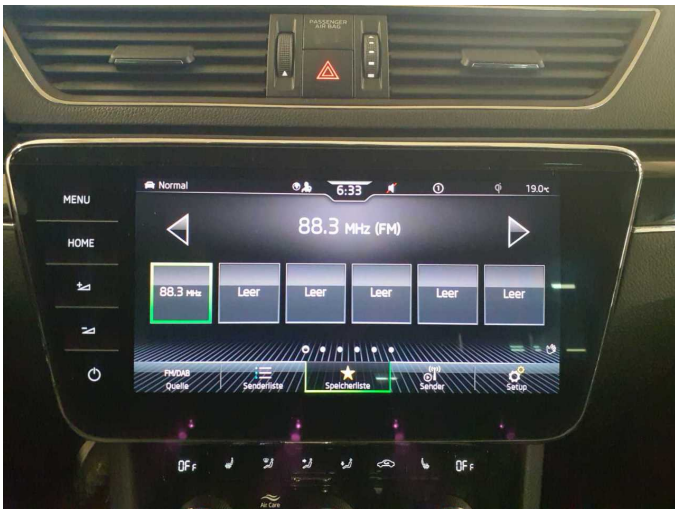


Figure 27: Misc.



Figure 28: Misc.



Figure 29: Misc.



Figure 30: Misc.

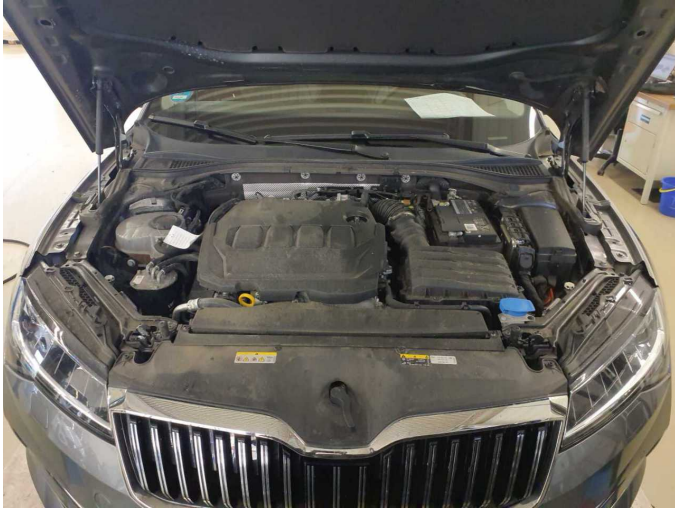


Figure 31: Misc.



Figure 32: Misc.

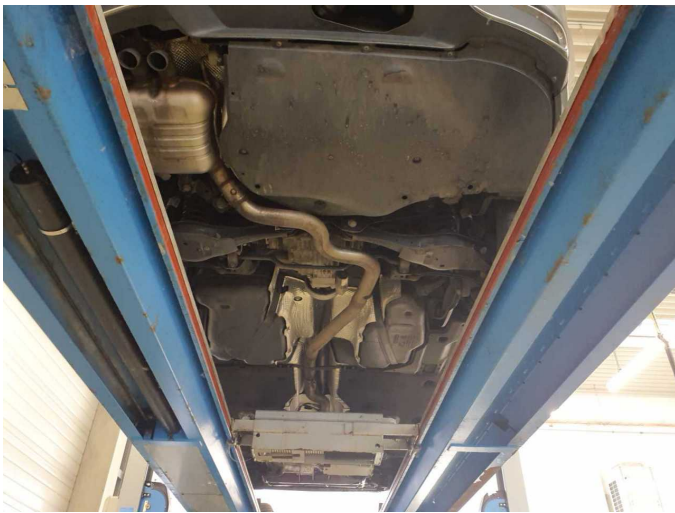


Figure 33: Misc.



Figure 34: Misc.



Damage 1: Wheel / tyres: Alloy rim - rear left side - Scratch(es) - Loss in value



Damage 1: Wheel / tyres: Alloy rim - rear left side - Scratch(es) - Loss in value



Damage 2: Side panel - rear right side: Side panel - dent(s) - Smart repair



Damage 2: Side panel - rear right side: Side panel - dent(s) - Smart repair



Damage 3: Side panel - rear left side: Side panel - dent(s) - Smart repair



Damage 3: Side panel - rear left side: Side panel - dent(s) - Smart repair



Damage 4: Wheel / tyres: Alloy rim - rear right side - Scratched - Loss in value



Damage 4: Wheel / tyres: Alloy rim - rear right side - Scratched - Loss in value



Damage 4: Wheel / tyres: Alloy rim - rear right side - Scratched - Loss in value



Damage 5: Front bumper: Front bumper - Scratch(es) - Paint



Damage 5: Front bumper: Front bumper - Scratch(es) - Paint



Damage 5: Front bumper: Front bumper - Scratch(es) - Paint



Damage 5: Front bumper: Front bumper - Scratch(es) - Paint



Damage 5: Front bumper: Front bumper - Scratch(es) - Paint



Damage 5: Front bumper: Front bumper - Scratch(es) - Paint



Wartungshistorie

(gemäß Auftraggeber Informationen)

Fahrgestellnummer: TMBLR7NP8P7031807

Hersteller / Modell: SKODA SKODA Superb Combi 2.0 TDI 4x4 DSG L&K

Datum	KM-Stand	Beschreibung
11.02.2026	81.767	AU
11.08.2025	62.458	Bremse Sonstiges; Bremsflüssigkeit; Bremsflüssigkeit ern; Bremsklötze hinten; Getriebeöl ern/prüfen; Motoröl b. Wartung; Ölfilter ern; Ölwechsel - Hinterachse; Regelwartungsdienst; Reparatur Sonstiges; Wartung Sonstiges
31.07.2024	31.965	Motoröl b. Wartung; Ölfilter ern; Regelwartungsdienst; Wartung Sonstiges