

Expertise

Protocol number: 45918232
Order No. / Reference: 26428488
Inspection date: 10 Jun 2026

Manufacturer: Opel

Model: Astra 1.5 D Automatik Business Edition

VIN: VXKFBYHZTP1036100



Vehicle details

Manufacturer / Type / Model / Equipment

Opel Astra 1.5 D Automatik Business Edition

Vehicle Identification number VXKFBYHZTP1036100

Mileage (Read) 52,888 km

First registration 18 Aug 2023

Number of holders 1

Power / Engine displacement 96 kw / 1,499 ccm

Fuel type / Cylinder Diesel / 4

Gearbox / Number of gears Automatic / 8

Type of drive Front drive

Type of vehicle Saloon car

Colour / colour code Karbon Schwarz Metallic

Doors / Seats 5 / 5

Upholstery type Cloth

Colour of upholstery Black-Anthracite



Vehicle details

Maintenance booklet / proof	Available / complete	Next maintenance in	
Key is / should be	2 / 2	FZG documents	ZB#2 (B) was available (copy), ZB#1 (S) was not available.
		Letter No.	GS838957
Previous damage / Accident	None detectable	Repainting	None detectable
Inspection conditions	sufficient	Lifting equipment / pit	yes
Test drive	Not performed	Engine function test	Performed
Manufacturer key number/ type code number	1889 / AES 00099		
Emission standard	EURO6;WLTP;AP;PI/CI; M, N1 I	fine dust sticker	
Permitted total weight	1,940 kg	Empty weight	

Tyres

Mounted tyres

#	Tyre size	Type of tyre	Manufacturer	Tread depth
1)	205/55 R16 94H	Winter tyres on Steel	Continental	6mm / 6mm
2)	205/55 R16 94H	Winter tyres on Steel	Continental	7mm / 7mm

Additional tyres

#	Tyre size	Type of tyre	Manufacturer	Tread depth
1)	205/55 R16 94V	Summer tyres on Light alloy	Michelin	6mm / 6mm
2)	205/55 R16 94V	Summer tyres on Light alloy	Michelin	7mm / 7mm

Legend: Tread depth information for the left tire is listed first, for the right tire it is listed second on the axle in the direction of travel.



Equipment

Standard equipment

- 180-degree reversing camera (parking pilot, front and rear parking aid)
- Airbag: Chest-pelvis side airbags, driver and front passenger (side airbag, front passenger can be manually deactivated)
- Airbag: Front and rear outer head airbags
- Anti-lock braking system (ABS) (including brake assist)
- Exterior mirrors, electrically adjustable, heated and manually folding
- Exterior mirror housings in black
- On-board computer
- Roof design line, in black
- Electronic brake force distribution (EBD)
- Electronic Stability Program (ESP) and Traction Control with engine and brake intervention (TCPlus)
- Electric windows front and rear (with one-touch function and anti-pinch protection)
- Transmission: 8-speed automatic transmission
- rear window wiper
- Automatic climate control (single-zone automatic climate control with particle and activated carbon filter)
- LED interior lighting (including reading lights, front and rear, as well as trunk lighting and lighting in the front footwell)
- Steering wheel: Leather steering wheel, flattened, perforated, with steering wheel remote control and paddle shifters
- Multimedia Infotainment System (with 10" color touchscreen display and 10" driver information display, automatic music recognition, Bluetooth audio streaming, hands-free calling, simultaneous pairing of 2 mobile phones, wireless smartphone integration via Apple CarPlay and Android Auto, personalization options, 4x20 watts, favorite station memory (24 per profile), speed-dependent volume control, FM/AM, DAB+, RDS-EON, 2 USB-C ports, breakdown and emergency call, vehicle status and information)
- Rear seat backrest folds forward in a 60:40 split
- Keyless Start system
- Seats: Ergonomic active driver's seat in Modene fabric (certified by the German Campaign for Healthy Backs (AGR) - adjustable length, height, tilt, backrest angle, and seat cushion angle - electro-pneumatically adjustable lumbar support in height and length - extendable thigh support - Modene fabric, black - heated front seats and heated steering wheel)
- 12V power outlet in the center console
- Pre-installation for ISOFIX child seat mounting system (incl. top tether attachment points, rear outer)
- Storage compartments (storage compartment in the center console, in the front doors suitable for 1.5-liter beverage bottles, in the rear doors suitable for 0.5-liter beverage bottles, glove compartment with LED lighting)
- Airbag: Front airbags, driver and front passenger (front passenger airbag can be manually deactivated)
- Automatic activation of the hazard warning lights (and unlocking of the doors after deployment of the airbag or seatbelt pretensioner)
- Hill Start Assist
- third brake light
- Diesel particulate filter (DPF) maintenance-free (exhaust aftertreatment via SCR (Selective Catalytic Reduction) catalyst with AdBlue (urea injection). Vehicles with BlueInjection technology require refilling of the AdBlue fluid between regular service intervals. A display in the vehicle informs the driver in good time when refilling is necessary.)
- Back window, heater
- Wiring harness for trailer hitch
- Front headrests and 3 rear headrests, height adjustable
- Paintwork: Roof in car color
- LED headlights (LED headlights - LED daytime running lights - LED taillights - LED turn signals - manual headlight range control - high beam assist - automatic low beam - rain sensor)
- Illuminated makeup mirrors in both sun visors
- Center armrest, front and rear (front center armrest with USB port and 2 USB chargers - front and rear cup holders - storage compartments - rear center armrest with pass-through)
- Fog light
- Opel Vizor with chrome frame
- Electric parking brake
- Tire repair kit (including tire sealant and 12-volt compressor (without jack))
- Tire pressure monitoring system
- Wheels: Alloy wheels 7 J x 16 (5 double spokes) in silver (with low rolling resistance tires 205/55 R 16)
- Seat belts: Three-point seat belts in all seats (belt force limiter and belt tensioner in the front and on the outer rear seats - warning tone and light for unfastened seat belts in all seats)
- Solar Protect heat-insulating glazing (in the rear, heavily tinted)
- Start/Stop system (Driving assistant - Reinforced starter - AGM high-performance battery - eco switch to deactivate the start/stop function - Brake energy recuperation)
- Electronic immobilizer
- Central locking with remote control (and interior switch)



Extra equipment

- Paint finish: Metallic
- Navigation system (Multimedia infotainment system with 10" color touchscreen display and 10" driver information display; navigation system with integrated memory; 3D map display for Europe and Russia; dynamic route guidance via map and/or arrow display and voice prompts; TomTom Online Traffic; online POI search and route guidance; parking information; fuel price information; live weather; over-the-air map updates; intelligent voice control; "Hey Opel" shortcut button; 6 functions; active route suggestions)

Brief expert findings

Documents submitted	At the time of the inspection, the vehicle registration certificate Part 2 (title) was available, but the vehicle registration certificate Part 1 (document) was not. (Copy)
VIN comparison	The vehicle identification number (VIN) was read from the vehicle and its conformity with the submitted documents was confirmed by the undersigned during the inspection.
Inspection	The inspection conditions were sufficient for the assessment of the vehicle. Lifting equipment and/or a pit were available for examining the vehicle.
Test drive	No test drive/shunting maneuver was carried out during the inspection of the vehicle.
Engine function test	An engine test run was performed.

Value reducing factors

No.	Component group	Description
1	Misc.	Main inspection - No evidence - No deduction
2	Misc.	Inspection / maintenance - No evidence - No deduction
3	Documents	Service book - Incomplete - No deduction
4	Door - front right side	Door edge - Scratch(es) - Smart repair
5	Door - front left side	Door edge - Scratch(es) - Smart repair
6	Door - rear left side	Door edge - Scratch(es) - Smart repair
7	Roof	Roof - dent(s) - Smooth repair work
8	Sill - right side	Sill - Scratch(es) - Smart repair
9	Side panel - rear left side	Side panel - Scratch(es) - Smart repair
10	2nd wheel set	1 alloy rim - Scratch(es) - Smart repair
11	Rear bumper	Rear bumper - Scratch(es) - Paint

Wear and tear

No.	Component group	Description
1	Vehicle glazing	Windscreen - Stone chips - No deduction
2	Bonnet	Bonnet - Stone chips - No deduction
3	Front bumper	Front bumper - Stone chips - No deduction

The vehicle shows signs of wear and tear commensurate with its age and use.

Missing parts

Description

- Documents - Log book
- Equipment - Tirefit complete



Order/Scope of Order

An order was placed to prepare a sales report for the described vehicle. This report includes the following:

- Description of key vehicle information
- Documentation of equipment features
(Delivery by third-party service providers)
- Documentation of damage, defects, missing parts
- Documentation of prior damage, unrepaired prior damage, repainting
- A brief visual or functional inspection of the equipment details, if possible.
(Functional testing of driver assistance systems is not included in the scope of services!)
- a photographic documentation of the vehicle

Basis for the order

This product is based on the guidelines for vehicle returns and valuations published by Alphabet Fleet GmbH. The expert makes the specific findings in each individual case objectively, within the framework of the prescribed standards, based on their own expertise.

The vehicle inspection takes place in a fully assembled, unassembled state.

Damage or defects that can only be detected during disassembly/diagnostic work or through further investigation remain within the realm of prognostic risk. An increased risk exists due to concealed defects caused by fraudulent misrepresentation and which were not identifiable by the expert.

Damage or defects resulting from normal use or wear and tear of the vehicle will be accepted in accordance with the applicable standard.

There was no explicit identification or monetary consideration of the expected features within the product.

Features which, in their nature and extent, slightly exceed normal use but do not constitute unacceptable damage, will be documented and indicated as signs of wear, if applicable.

Damage or defects that, according to the applicable standard, can no longer be attributed to normal use or wear and tear are listed under "Value Reducing Factors" in the product description.

Depending on the product specification, a monetary ID can be provided. If this takes place, the costs can be 100% or pro rata depending on the vehicle's age and mileage.

Previous damages

No apparent prior damage that had been repaired could be found on the vehicle.



Figure 1: Diagonal front (left)



Figure 2: Diagonal front (right)



Figure 3: Diagonal rear (left)



Figure 4: Diagonal rear (right)



Figure 5: Interior - front



Figure 6: Interior - rear



Figure 7: Instrument cluster



Figure 8: Instrument panel



Figure 9: Interior 360° view



Figure 10: Cargo area



Figure 11: VIN



Figure 12: Mounted tyres

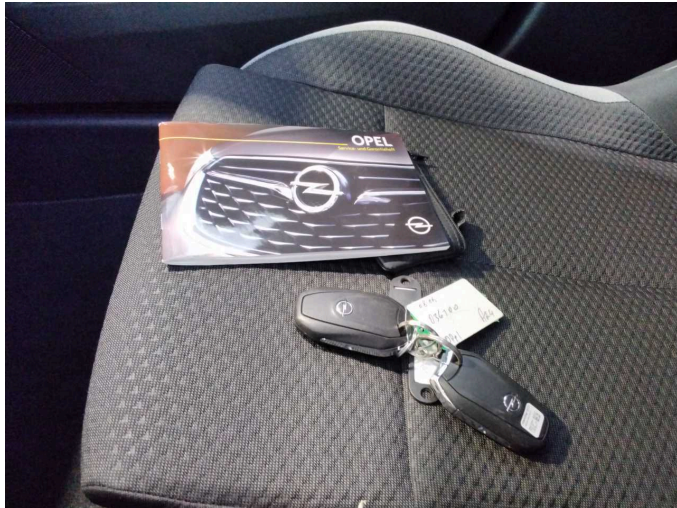


Figure 13: Documents

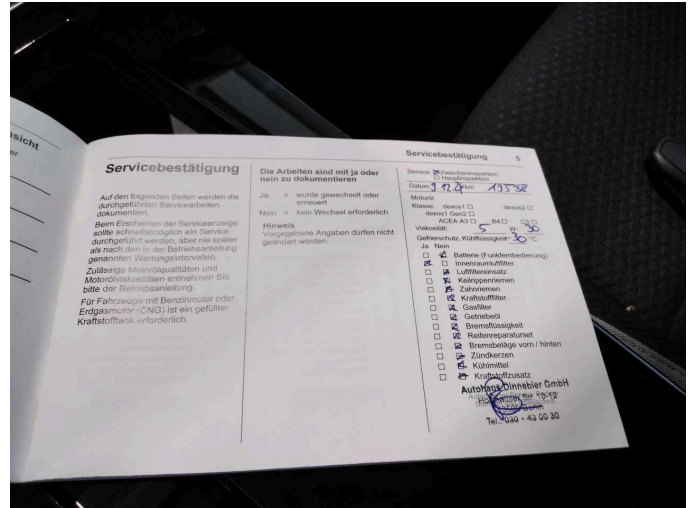


Figure 14: Documents



Figure 15: Additional tyres



Figure 16: Navigation

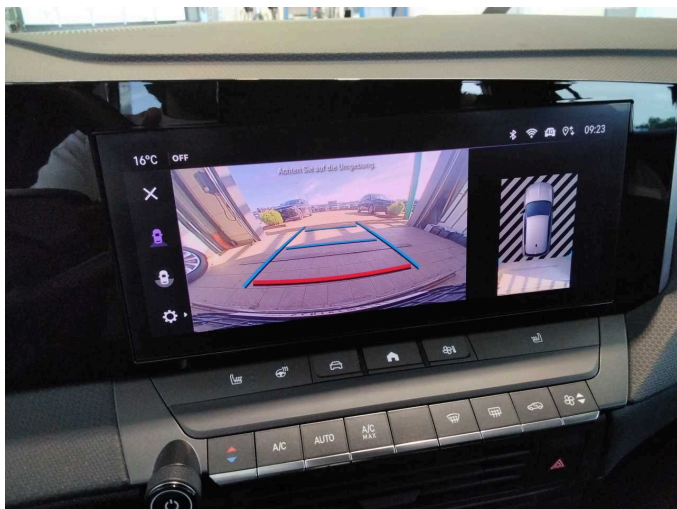


Figure 17: Misc.



Figure 18: Misc.



Figure 19: Misc.



Figure 20: Misc.

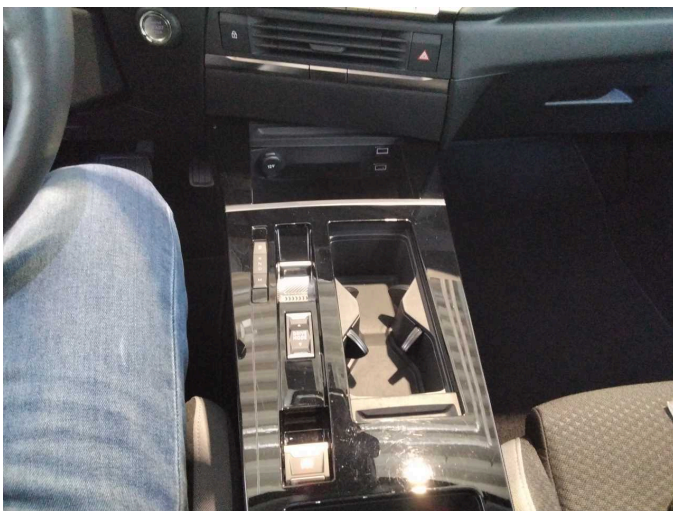


Figure 21: Misc.



Figure 22: Misc.



Figure 23: Misc.



Figure 24: Misc.



Figure 25: Misc.



Figure 26: Misc.



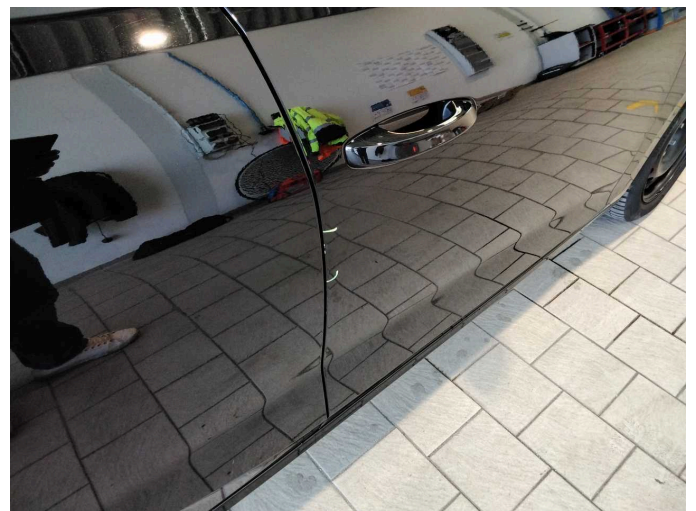
Figure 27: Misc.



Figure 28: Misc.



Figure 29: Misc.



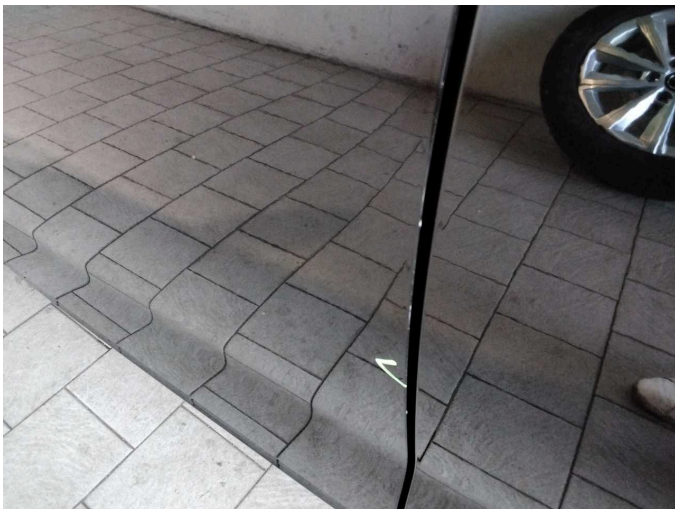
Damage 4: Door - front right side: Door edge - Scratch(es) - Smart repair



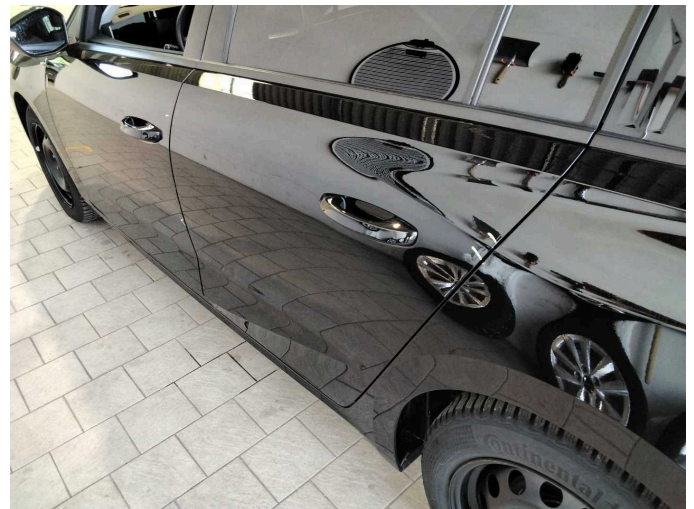
Damage 4: Door - front right side: Door edge - Scratch(es) - Smart repair



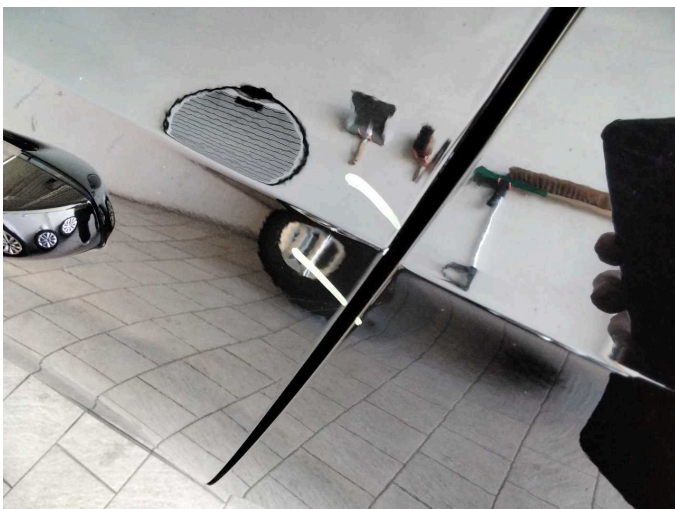
Damage 5: Door - front left side: Door edge - Scratch(es) - Smart repair



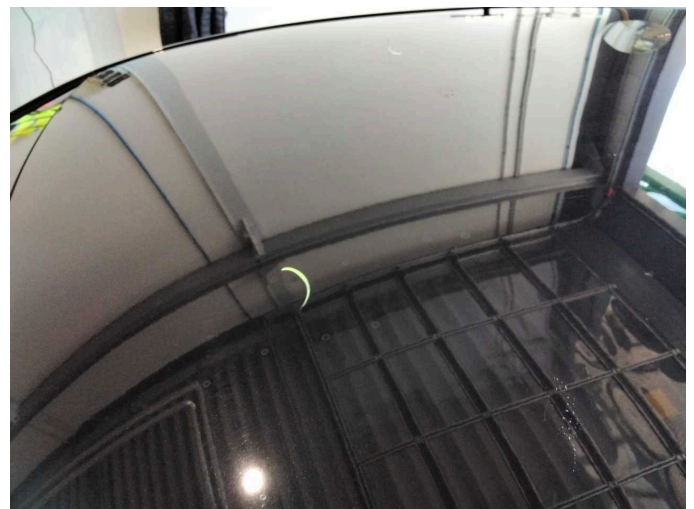
Damage 5: Door - front left side: Door edge - Scratch(es) - Smart repair



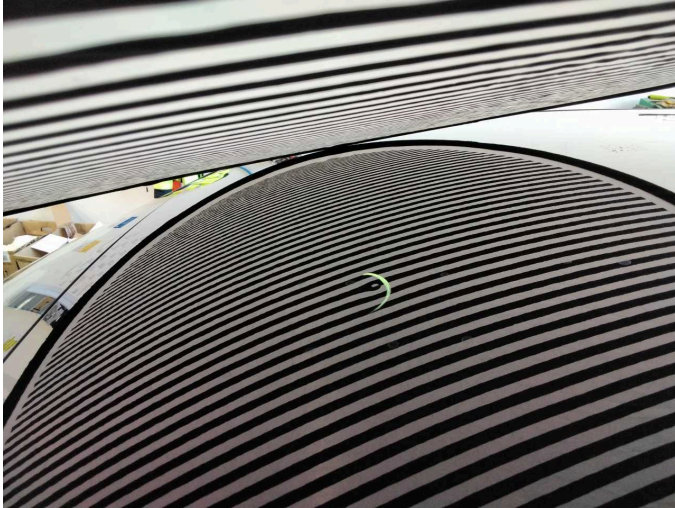
Damage 6: Door - rear left side: Door edge - Scratch(es) - Smart repair



Damage 6: Door - rear left side: Door edge - Scratch(es) - Smart repair



Damage 7: Roof: Roof - dent(s) - Smooth repair work



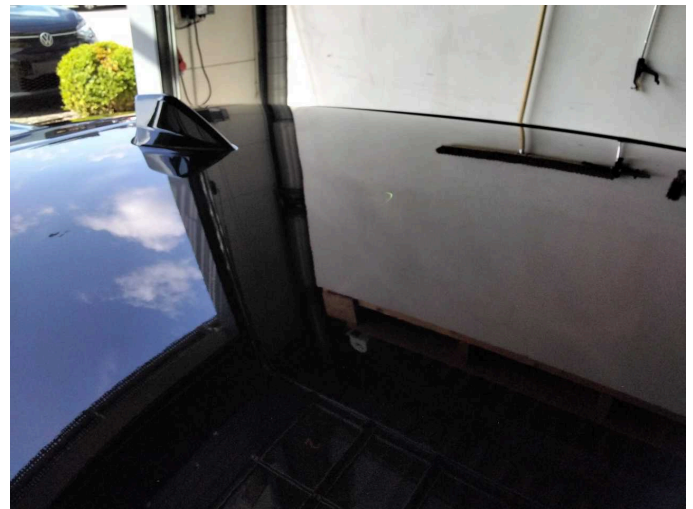
Damage 7: Roof: Roof - dent(s) - Smooth repair work



Damage 7: Roof: Roof - dent(s) - Smooth repair work



Damage 7: Roof: Roof - dent(s) - Smooth repair work



Damage 7: Roof: Roof - dent(s) - Smooth repair work



Damage 7: Roof: Roof - dent(s) - Smooth repair work



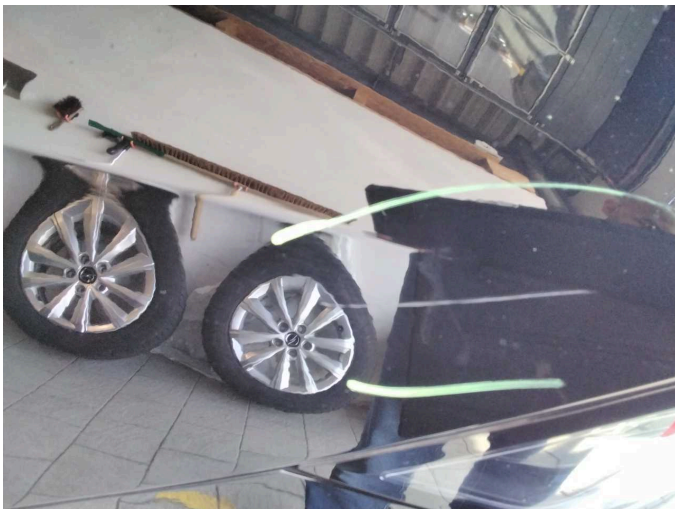
Damage 8: Sill - right side: Sill - Scratch(es) - Smart repair



Damage 8: Sill - right side: Sill - Scratch(es) - Smart repair



Damage 9: Side panel - rear left side: Side panel - Scratch(es) - Smart repair



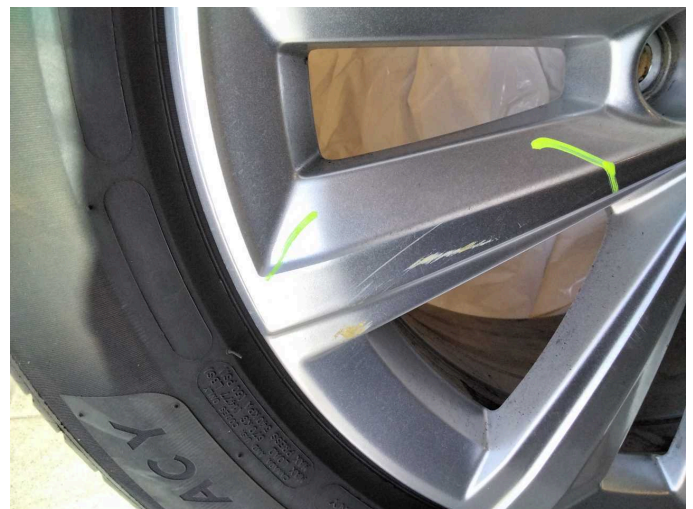
Damage 9: Side panel - rear left side: Side panel - Scratch(es) - Smart repair



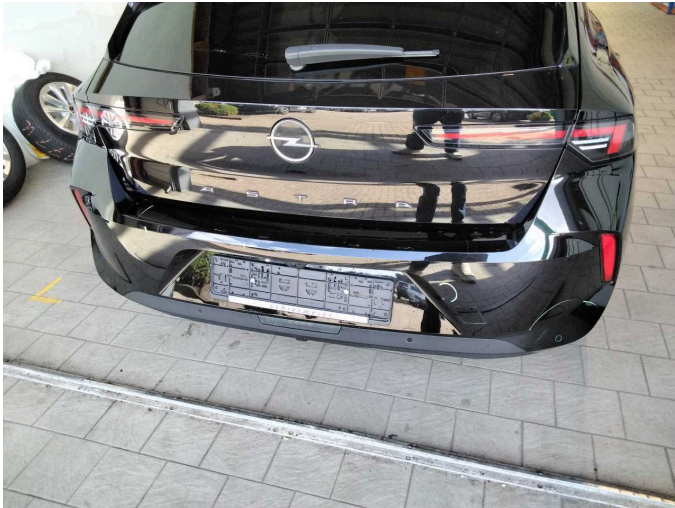
Damage 9: Side panel - rear left side: Side panel - Scratch(es) - Smart repair



Damage 10: 2nd wheel set: 1 alloy rim - Scratch(es) - Smart repair



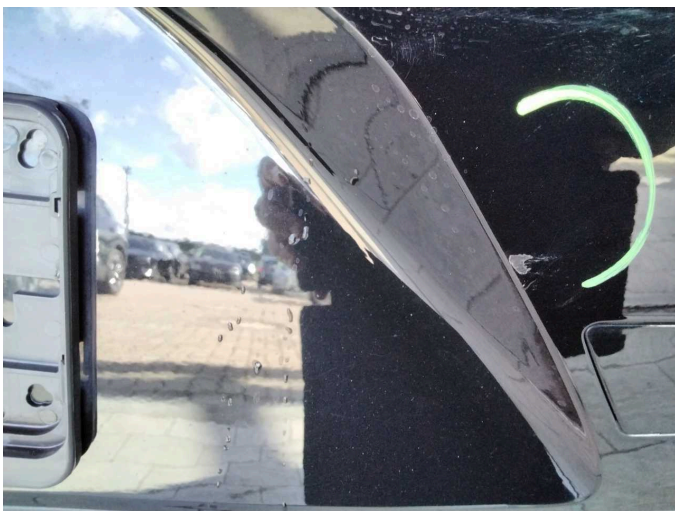
Damage 10: 2nd wheel set: 1 alloy rim - Scratch(es) - Smart repair



Damage 11: Rear bumper: Rear bumper - Scratch(es) - Paint



Damage 11: Rear bumper: Rear bumper - Scratch(es) - Paint



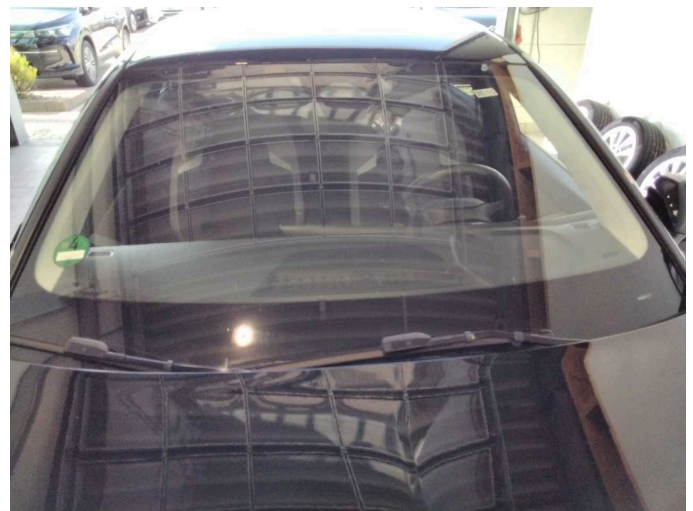
Damage 11: Rear bumper: Rear bumper - Scratch(es) - Paint



Damage 11: Rear bumper: Rear bumper - Scratch(es) - Paint



Damage 11: Rear bumper: Rear bumper - Scratch(es) - Paint



Wear and tear 1: Vehicle glazing: Windscreen - Stone chips - No deduction



Wear and tear 2: Bonnet: Bonnet - Stone chips - No deduction



Wear and tear 3: Front bumper: Front bumper - Stone chips - No deduction



Missing part 2: Equipment: Tirefit complete - Missing - Replace