

## Expertise

Protocol number: 45411137  
Order No. / Reference: 26258388  
Inspection date: 12 May 2026

Manufacturer: Mercedes-Benz

Model: Vito 116 CDI Kasten Extralang HA Aut. PRO

VIN: W1VVLCEZ3T4536176



### Vehicle details

#### Manufacturer / Type / Model / Equipment

Mercedes-Benz Vito 116 CDI Kasten Extralang HA Aut. PRO

<b>Vehicle Identification number</b>	W1VVLCEZ3T4536176
<b>Mileage (Read)</b>	21,629 km
<b>First registration</b>	1 Jul 2025
<b>Number of holders</b>	1
<b>Next periodical technical inspection</b>	07/2026 (Report not on hand)

<b>Power / Engine displacement</b>	120 kw / 1,950 ccm
------------------------------------	--------------------

<b>Fuel type / Cylinder</b>	Diesel / 4
-----------------------------	------------

<b>Gearbox / Number of gears</b>	Automatic / 9
----------------------------------	---------------

<b>Type of drive</b>	Rear drive
----------------------	------------

<b>Type of vehicle</b>	Van
------------------------	-----

<b>Colour / colour code</b>	Grafitgrau Metallic
-----------------------------	---------------------

<b>Doors / Seats</b>	5 / 3
----------------------	-------

<b>Upholstery type</b>	Cloth
------------------------	-------

<b>Colour of upholstery</b>	Anthracite-Black
-----------------------------	------------------

<b>Re-import</b>	no
------------------	----

<b>Type of use</b>	rental car
--------------------	------------

<b>readiness to drive</b>	Not roadworthy / moveable
---------------------------	------------------------------



## Vehicle details

<b>Maintenance booklet / proof</b>	digital proof / complete	<b>Next maintenance in</b>	295 Tag(e)
<b>Key is / should be</b>	1 / 2	<b>FZG documents</b>	ZB#2 (B) was available (copy), ZB#1 (S) was not available.
		<b>Letter No.</b>	HN420169
<b>Previous damage / Accident</b>	None detectable	<b>Repainting</b>	None detectable
<b>Inspection conditions</b>	sufficient	<b>Lifting equipment / pit</b>	No
<b>Test drive</b>	Not performed	<b>Engine function test</b>	Performed
<b>readiness to drive</b>	Not roadworthy / moveable		
<b>Manufacturer key number/ type code number</b>	2222 / BBJ 11542		
<b>Emission standard</b>	EURO6;WLTP;EB;PI/CI;M, N1, N2	<b>fine dust sticker</b>	
<b>Permitted total weight</b>	2,800 kg	<b>Empty weight</b>	

## Tyres

### Mounted tyres

#	Tyre size	Type of tyre	Manufacturer	Tread depth
1)	225/55 R17 107H	All-season tyres on Steel rim with wheel cover	Goodyear	4mm / 4mm
2)	225/55 R17 107H	All-season tyres on Steel rim with wheel cover	Goodyear	7mm / 7mm

**Legend: Tread depth information for the left tire is listed first, for the right tire it is listed second on the axle in the direction of travel.**



## Equipment

### Standard equipment

- Screw-in towing eye front/rear
- Driver's side airbag
- ATTENTION ASSIST
- Outdoor temperature display
- Battery: fleece battery 12 V / 92 Ah
- Hill start assist
- third brake light
- COC documents
- Diesel particulate filter
- Electrical components for trailer socket
- Driving light assistant
- Chassis: Standard chassis
- electric parking brake
- Generator management
- Transmission: 9G-TRONIC
- Seatbelt warning device for front passenger seat
- Lockable glove box
- Boot lid
- Interior trim of cargo area, side
- Tempmatic controlled air conditioning
- Comfort closing
- Headrests (2), front
- Steering wheel adjustable for tilt and height
- Headlight range control
- Navigation: Navigation pre-installation
- Breakdown management
- Radio: Digital Radio DAB
- Full wheel cover
- Tires: Tires without specified make
- Tire pressure monitoring
- Wheels: Steel rims 6.5 J x 17
- Electric suction fan, power level 5
- Sliding door on the right, cargo/passenger compartment
- Crosswind Assist
- Seat: Lumbar support, passenger seat
- Seats: Driver's seat Plus with flat seat surface
- Seats: Comfort driver's seat
- Seats: Driver's seat cushion depth adjustment
- Start-stop function
- Cruise control
- continuous partition wall
- First aid kit
- Warning triangle
- Immobiliser
- Central locking with radio remote control
- Passenger side airbag
- Towing capacity 0 kg/lbs
- Electrically adjustable and heated exterior mirrors, left and right
- Fixing points in the roof frame
- Brake assist, active
- Brake lights, adaptive
- Front cupholder
- Electronic tachometer
- Electronic Stability Program (ADAPTIVE ESP) with integrated Anti-lock Braking System (ABS)
- Electric windows, driver/passenger
- Generator 14 V / 250 A
- Speed limit 210 km/h
- Weight variant 2,800 kg
- Seatbelt warning device for driver's seat
- Rear camera not foldable
- HOLD function
- Intelligent speed assistant
- Instrument cluster with color display
- Communication module (LTE) for digital services
- Large fuel tank, approx. 70 liters
- Steering wheel: Multifunction steering wheel
- Mercedes-Benz emergency call system
- Package: BlueEFFICIENCY
- Upholstery: Caluma fabric, black
- Radio: MBUX multimedia system
- Tires: 225/55R17
- Tires: Summer tires
- Wheels: Premium complete wheel protection
- High-resolution reversing camera with guide lines
- Headlights: halogen technology
- Key: Multi-button remote control
- electromechanical power steering
- Seat: Lumbar support driver's seat
- Seats: Comfort passenger seat
- Seats: Passenger seat cushion depth adjustment
- Lane Keeping Assist active
- 12V socket
- Blind Spot Assist
- Updates to the intelligent speed assistant
- Pre-installation for Remote Services Plus
- ASSYST maintenance interval indicator
- Heat-insulating glass all around
- Registration as a truck

### Extra equipment



- Towing capacity 2500 kg
- Wooden floor (cargo area)
- Paint finish: Metallic
- LED light strip in the cargo area
- Package: Parking package with reversing camera (12 ultrasonic sensors (6 in the front and 6 in the rear bumper) - reversing camera - PARKTRONIC with active parking assist - Rear Cross Traffic Alert - Maneuvering brake - Drive Away Assist)
- Bumpers painted in body color
- All-weather floor mats with high surrounding edge
- Interior lining of the cargo area up to roof height (wood)
- Load anchoring rail system
- Multibeam LED with High Beam Assist PLUS
- Package: Winter Package (heated seats for driver and passenger seats - heated windshield washer nozzles - heated steering wheel)
- Rear door: Rear swing doors, opening to side wall
- Seats: Passenger seat, two-seater
- Phone: Smartphone integration package

## Brief expert findings

Documents submitted	At the time of the inspection, the vehicle registration certificate Part 2 (title) was available, but the vehicle registration certificate Part 1 (document) was not. (Copy)
VIN comparison	The vehicle identification number (VIN) was read from the vehicle and its conformity with the submitted documents was confirmed by the undersigned during the inspection.
Inspection	The inspection conditions were sufficient for the assessment of the vehicle. No lifting equipment or pit was available for inspecting the vehicle. Therefore, inspection of the vehicle's underside was only possible to a limited extent.
Test drive	No test drive/shunting maneuver was carried out during the inspection of the vehicle.
Engine function test	An engine test run was performed.
readiness to drive	The vehicle was not capable of driving under its own power at the time of inspection, but can be moved on its own axle with the aid of assistance.

## Value reducing factors

No.	Component group	Description
1	Wheel / tyres	Wheel cover - rear left side - Scratch(es) - Replace
2	Wheel / tyres	Wheel cover - front left side - Scratch(es) - Replace
3	Instrument panel	Indicator light (Reifendruck Kontrollleuchte) - on - Perform diagnosis
4	Wheel / tyres	Tyre - front right side - Does not meet the leasing specifications - Replace
5	Wheel / tyres	Tyre - front left side - Does not meet the leasing specifications - Replace

## Wear and tear

No.	Component group	Description
1	Bonnet	Bonnet - Stone chips - No deduction
2	Vehicle glazing	Windscreen - Stone chips - No deduction
3	Interior	Interior - Scratch(es) - No deduction
4	Sill - left side	Sill - Scratch(es) - No deduction
5	Rear bumper	Rear bumper - Scratch(es) - No deduction

The vehicle shows signs of wear and tear commensurate with its age and use.

## Missing parts

### Description

Equipment - Vehicle key (laut Auftraggeber vorhanden)  
Documents - Log book



## Order/Scope of Order

An order was placed to prepare a sales report for the described vehicle. This report includes the following:

- Description of key vehicle information
- Documentation of equipment features  
*(Delivery by third-party service providers)*
- Documentation of damage, defects, missing parts
- Documentation of prior damage, unrepaired prior damage, repainting
- A brief visual or functional inspection of the equipment details, if possible.  
*(Functional testing of driver assistance systems is not included in the scope of services!)*
- a photographic documentation of the vehicle

## Basis for the order

This product is based on the guidelines for vehicle returns and valuations of light commercial vehicles published by Alphabet Fleet Management GmbH. The expert makes the specific findings in each individual case objectively, within the framework of the prescribed standards, based on their own expertise.

The vehicle inspection takes place in a fully assembled, unassembled state.

Damage or defects that can only be detected during disassembly/diagnostic work or through further investigation remain within the realm of prognostic risk. An increased risk exists due to concealed defects caused by fraudulent misrepresentation and which were not identifiable by the expert.

Damage or defects resulting from normal use or wear and tear of the vehicle will be accepted in accordance with the applicable standard.

There was no explicit identification or monetary consideration of the expected features within the product.

Features which, in their nature and extent, slightly exceed normal use but do not constitute unacceptable damage, will be documented and indicated as signs of wear, if applicable.

Damage or defects that, according to the applicable standard, can no longer be attributed to normal use or wear and tear are listed under "Value Reducing Factors" in the product description.

Depending on the product specification, a monetary ID can be provided. If this takes place, the costs can be 100% d or pro rata depending on the vehicle's age and mileage.

## Previous damages

No apparent prior damage that had been repaired could be found on the vehicle.

## Comments

- Ex STAR CAR Mietfahrzeug.
- Die Unterbodenbesichtigung war nur ebenerdig und eingeschränkt möglich.
- Mehrkosten möglich .



Figure 1: Diagonal front (left)



Figure 2: Diagonal front (right)



Figure 3: Diagonal rear (left)



Figure 4: Diagonal rear (right)

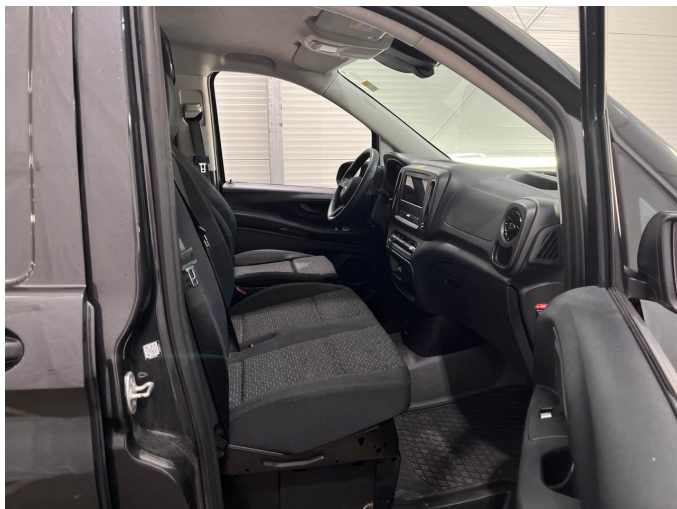


Figure 5: Interior - front



Figure 6: Interior - rear



Figure 7: Instrument cluster



Figure 8: Instrument panel



Figure 9: Interior 360° view



Figure 10: Cargo area



Figure 11: VIN



Figure 12: Mounted tyres

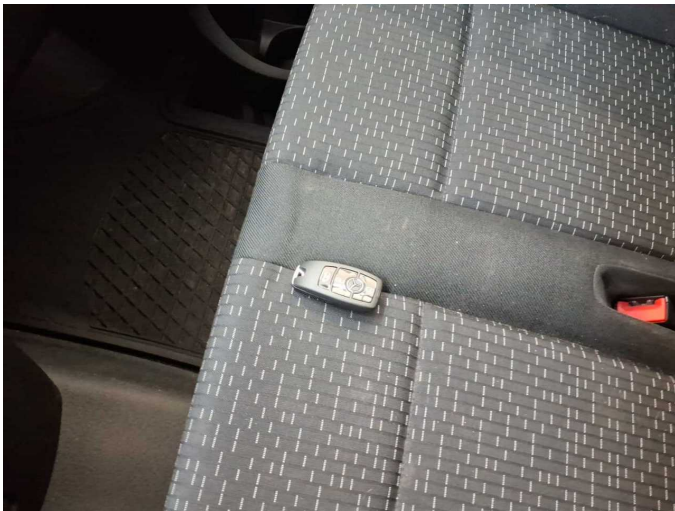


Figure 13: Documents

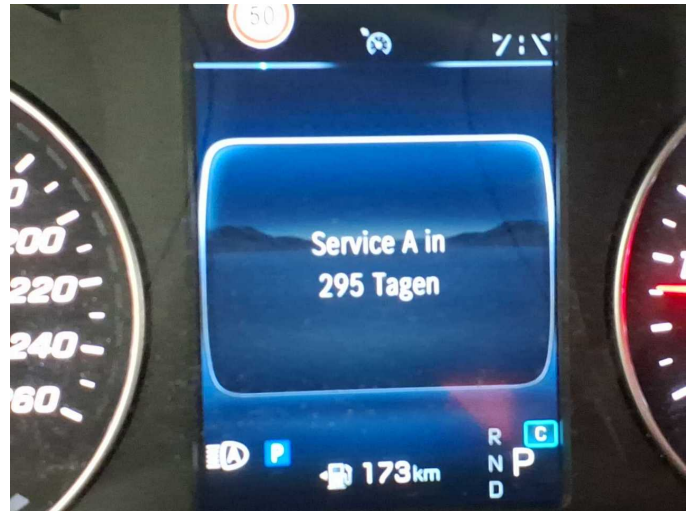


Figure 14: Documents



Figure 15: Navigation



Figure 16: Misc.



Figure 17: Misc.

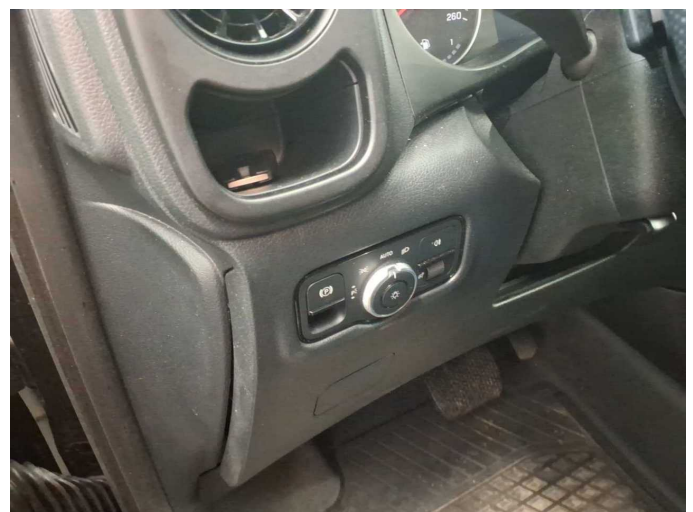


Figure 18: Misc.



Figure 19: Misc.



Figure 20: Misc.

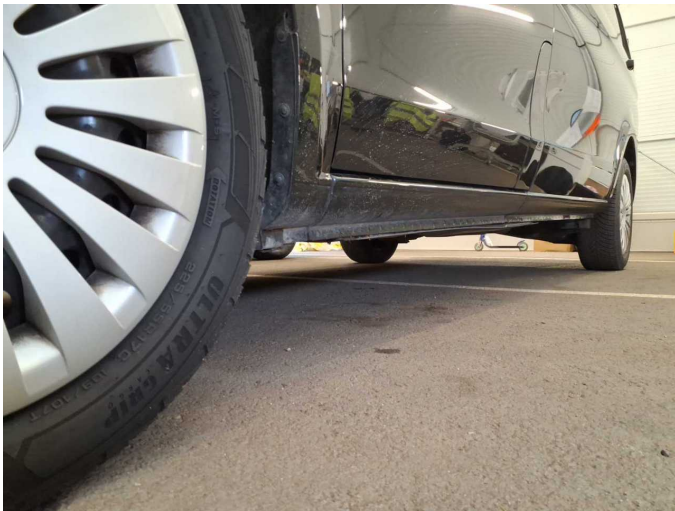


Figure 21: Misc.



Figure 22: Misc.

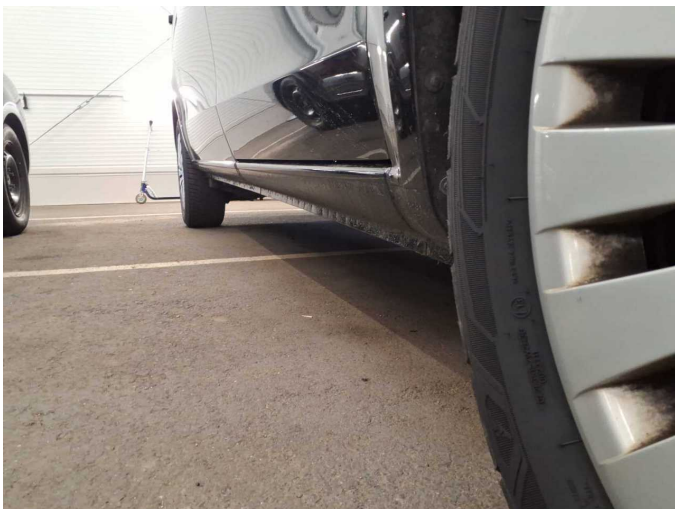


Figure 23: Misc.



Figure 24: Misc.



Figure 25: Misc.



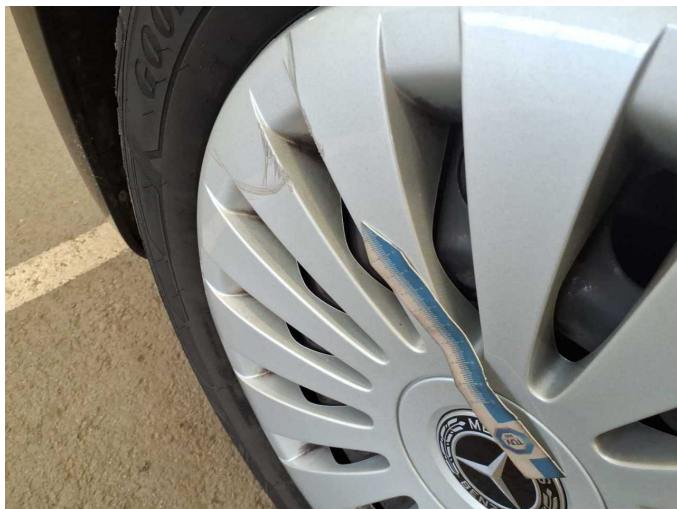
Figure 26: Misc.



Damage 1: Wheel / tyres: Wheel cover - rear left side - Scratch(es) - Replace



Damage 1: Wheel / tyres: Wheel cover - rear left side - Scratch(es) - Replace



Damage 2: Wheel / tyres: Wheel cover - front left side - Scratch(es) - Replace



Damage 2: Wheel / tyres: Wheel cover - front left side - Scratch(es) - Replace



**Damage 3:** Instrument panel: Indicator light (Reifendruck Kontrollleuchte) - on - Perform diagnosis



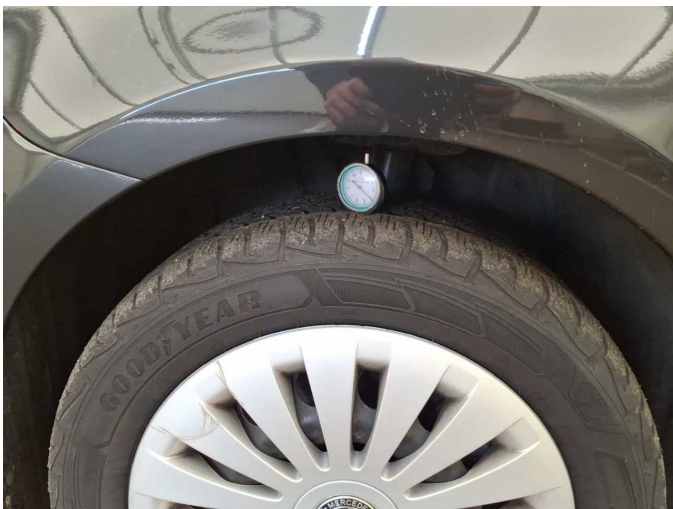
**Damage 4:** Wheel / tyres: Tyre - front right side - Does not meet the leasing specifications - Replace



**Damage 4:** Wheel / tyres: Tyre - front right side - Does not meet the leasing specifications - Replace



**Damage 5:** Wheel / tyres: Tyre - front left side - Does not meet the leasing specifications - Replace



**Damage 5:** Wheel / tyres: Tyre - front left side - Does not meet the leasing specifications - Replace



**Missing part 1:** Equipment: Vehicle key (laut Auftraggeber vorhanden) - Missing - Replace



**Missing part 2:** Documents: Log book - Missing - Replace